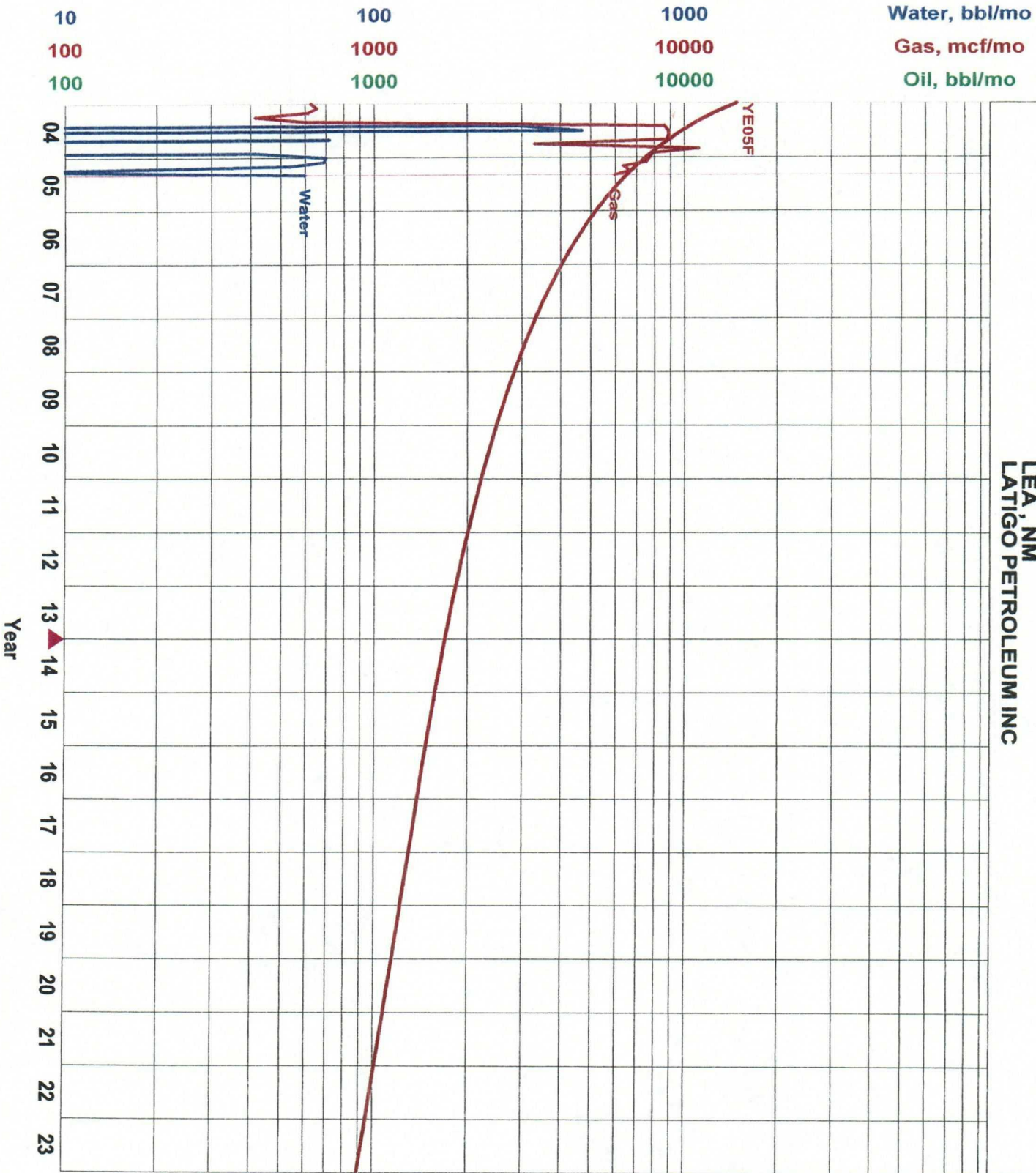


FEDERAL A 132
 BOUGH (SAN ANDRES PENN)
 LEA, NM
 LATIGO PETROLEUM INC



Oil, bbl/mo	1/2005
Ref=	0
Cum=	0
Gas, mcf/mo	1/2005
Ref=	YE05F
Cum=	1167949
Rem=	651031
EUR=	1818980
Yrs=	65.748
Qref=	7525.9
Dee=	30.773373
Dmin=	0.000
b=	1.200000
Qab=	49.8
Water, bbl/m	1/2005
Ref=	1023
Cum=	

FEDERAL A 13 2
 LATIGO PETROLEUM INC
 BOUGH (SAN ANDRES PENN)
 LEA , NM
 IPDP MAJOR: GAS

Date: 05/16/2005
 Time: 13:56:53
 DBS: CENTRAL
 Settings: LPI_01_2005
 Scenario: YE05F

INPUT DATA

INITIAL CALCULATED DATA

ITEM NAME	Scheduling Rates			Schedule Until		Procedure	Ultimate	Last	Eff. Decl	Init. Rate	Final Rate	
400 START	1/2005											
401 GAS	7525.90	X	M/M	9/2016	AD	B/1.200	30.77	1556.899	8/2016	37.0	7526.	1408.
402 "	1408.21	X	M/M	263.44	IMU	EXP	6.00	1820.339	8/2070	6.0	1408.	50.
500 PAJ/GAS	-2.16	X	\$/M	TO	LIFE	PC	0.00		8/2070		-2.160	-2.160
501 PAJ/OIL	-2.57	X	\$/B	TO	LIFE	PC	0.00		8/2070		-2.570	-2.570
502 PRI/GAS	01/2005	5.765	5.765	5.765	5.765	\$/Y			12/2009			
504 "	5.76	X	\$/M	TO	LIFE	PC	0.00		8/2070		5.765	5.765
505 PRI/OIL	43.4600	X	\$/B	TO	LIFE	PC	0.00		8/2070		43.460	43.460
600 STX/GAS	7.94		%	TO	LIFE	PC	0.00		12/2004		0.079	0.079
601 STX/OIL	7.09		%	TO	LIFE	PC	0.00		12/2004		0.071	0.071
602 OPC/T	1688.00	X	\$/M	TO	LIFE	PC	0.00		8/2070		1688.000	1688.000
604 ATX	1.02	X	%	TO	LIFE	PC	0.00		8/2070		0.010	0.010
705 LSE/WI	100.0000	D	%	TO	LIFE	FLAT	0.00		8/2070		1.000	1.000
720 NET/OIL	82.5000	D	%	TO	LIFE	FLAT	0.00		8/2070		0.825	0.825
740 NET/GAS	82.5000	D	%	TO	LIFE	FLAT	0.00		8/2070		0.825	0.825

MISC. PARAMETERS

Item

Item

201 WELLS	0.00	1.00	
202 BTU	0.93		
203 CUMO, MB	0.00	CUMG, MMF 1167.95	CUML, MB
250 LOSS	NO		

PROJECT RUN SETTINGS

Base Date : 01/2002 Time Frames : 12,47*12,588
 P.W. Date : 01/2005 Primary PW% : 10.0 Discount Freq. : MO
 Report Date : 01/2005
 Qualifiers : Prod = YE05F Price = LPI Cost = LPI Owner = CORP
 Title = DEFAULT Misc = YE05F Invest = POSTDRILL Overlay = YE05F

LATIGO PETROLEUM INC. CASHFLOW

AS OF DATE: 01/2005

FEDERAL A 13 2
LATIGO PETROLEUM INC
BOUGH (SAN ANDRES PENN)

DATE : 05/16/2005
TIME : 13:56:53
DBS : CENTRAL

LEA , NM
005
1PDP MAJOR: GAS

PRODUCTION: YE05F
OWNER : CORP

SETTINGS : LPI_01_2
SCENARIO : YE05F

MO-YEAR	GROSS OIL PRODUCTION MBBLS	GROSS GAS PRODUCTION MMCF	NET OIL PRODUCTION MBBLS	NET GAS PRODUCTION MMCF	NET OIL PRICE \$/BBL	NET GAS PRICE \$/MCF	NET OIL SALES M\$	NET GAS SALES M\$	TOTAL NET SALES M\$	INTERESTS WORKING PCT	INTERESTS REVENUE PCT
12-2005	0.000	74.551	0.000	61.504	0.000	3.356	0.000	206.425	206.425	100.000	82.500
12-2006	0.000	54.846	0.000	45.248	0.000	3.356	0.000	151.864	151.864	100.000	82.500
12-2007	0.000	43.888	0.000	36.208	0.000	3.356	0.000	121.523	121.523	100.000	82.500
12-2008	0.000	36.829	0.000	30.384	0.000	3.356	0.000	101.977	101.977	100.000	82.500
12-2009	0.000	31.869	0.000	26.292	0.000	3.356	0.000	88.243	88.243	100.000	82.500
12-2010	0.000	28.177	0.000	23.246	0.000	3.356	0.000	78.019	78.019	100.000	82.500
12-2011	0.000	25.312	0.000	20.882	0.000	3.356	0.000	70.086	70.086	100.000	82.500
12-2012	0.000	23.019	0.000	18.990	0.000	3.356	0.000	63.736	63.736	100.000	82.500
12-2013	0.000	21.138	0.000	17.439	0.000	3.356	0.000	58.529	58.529	100.000	82.500
12-2014	0.000	19.566	0.000	16.142	0.000	3.356	0.000	54.175	54.175	100.000	82.500
12-2015	0.000	18.230	0.000	15.039	0.000	3.356	0.000	50.476	50.476	100.000	82.500
12-2016	0.000	17.079	0.000	14.090	0.000	3.356	0.000	47.291	47.291	100.000	82.500
12-2017	0.000	16.052	0.000	13.243	0.000	3.356	0.000	44.446	44.446	100.000	82.500
12-2018	0.000	15.089	0.000	12.448	0.000	3.356	0.000	41.779	41.779	100.000	82.500
12-2019	0.000	14.183	0.000	11.701	0.000	3.356	0.000	39.273	39.273	100.000	82.500
12-2020	0.000	13.332	0.000	10.999	0.000	3.356	0.000	36.916	36.916	100.000	82.500
12-2021	0.000	12.532	0.000	10.339	0.000	3.356	0.000	34.701	34.701	100.000	82.500
12-2022	0.000	11.780	0.000	9.719	0.000	3.356	0.000	32.619	32.619	100.000	82.500
12-2023	0.000	11.074	0.000	9.136	0.000	3.356	0.000	30.662	30.662	100.000	82.500
12-2024	0.000	10.409	0.000	8.588	0.000	3.356	0.000	28.822	28.822	100.000	82.500
S TOT	0.000	498.956	0.000	411.638	0.000	3.356	0.000	1381.563	1381.563	100.000	82.500
AFTER	0.000	33.102	0.000	27.309	0.000	3.356	0.000	91.656	91.656	100.000	82.500
TOTAL	0.000	532.057	0.000	438.947	0.000	3.356	0.000	1473.219	1473.219	100.000	82.500

MO-YEAR	GROSS OIL	WELLS GAS	SEVERANCE TAXES M\$	NET ADVAL TAXES M\$	OTHER EXPENSE M\$	OPERATING EXPENSE M\$	TOTAL OPER EXPENSES M\$	EQUITY INVESTMENT M\$	FUTURE NET CASHFLOW M\$	CUMULATIVE CASHFLOW M\$	CUM DISC. @ 10% CASHFLOW M\$
12-2005	0.	1.	16.390	1.938	0.000	20.256	22.194	0.000	167.840	167.840	160.609
12-2006	0.	1.	12.058	1.426	0.000	20.256	21.682	0.000	118.124	285.964	263.276
12-2007	0.	1.	9.649	1.141	0.000	20.256	21.397	0.000	90.477	376.441	334.731
12-2008	0.	1.	8.097	0.958	0.000	20.256	21.214	0.000	72.666	449.107	386.888
12-2009	0.	1.	7.007	0.829	0.000	20.256	21.085	0.000	60.152	509.260	426.130
12-2010	0.	1.	6.195	0.733	0.000	20.256	20.989	0.000	50.836	560.095	456.275
12-2011	0.	1.	5.565	0.658	0.000	20.256	20.914	0.000	43.607	603.702	479.781
12-2012	0.	1.	5.061	0.598	0.000	20.256	20.854	0.000	37.821	641.524	498.313
12-2013	0.	1.	4.647	0.550	0.000	20.256	20.806	0.000	33.077	674.600	513.046
12-2014	0.	1.	4.302	0.509	0.000	20.256	20.765	0.000	29.109	703.709	524.833
12-2015	0.	1.	4.008	0.474	0.000	20.256	20.730	0.000	25.738	729.447	534.307
12-2016	0.	1.	3.755	0.444	0.000	20.256	20.700	0.000	22.836	752.283	541.948
12-2017	0.	1.	3.529	0.417	0.000	20.256	20.673	0.000	20.244	772.527	548.106
12-2018	0.	1.	3.317	0.392	0.000	20.256	20.648	0.000	17.814	790.341	553.033
12-2019	0.	1.	3.118	0.369	0.000	20.256	20.625	0.000	15.530	805.870	556.938
12-2020	0.	1.	2.931	0.347	0.000	20.256	20.603	0.000	13.382	819.253	559.998
12-2021	0.	1.	2.755	0.326	0.000	20.256	20.582	0.000	11.364	830.617	562.360
12-2022	0.	1.	2.590	0.306	0.000	20.256	20.562	0.000	9.467	840.084	564.149
12-2023	0.	1.	2.435	0.288	0.000	20.256	20.544	0.000	7.684	847.767	565.469
12-2024	0.	1.	2.288	0.271	0.000	20.256	20.527	0.000	6.007	853.774	566.408
S TOT	0.	1.	109.696	12.973	0.000	405.120	418.093	0.000	853.774	853.774	566.408
AFTER	0.	1.	7.277	0.861	0.000	74.272	75.133	0.000	9.246	863.020	567.637
TOTAL	0.	1.	116.974	13.834	0.000	479.392	493.226	0.000	863.020	863.020	567.637

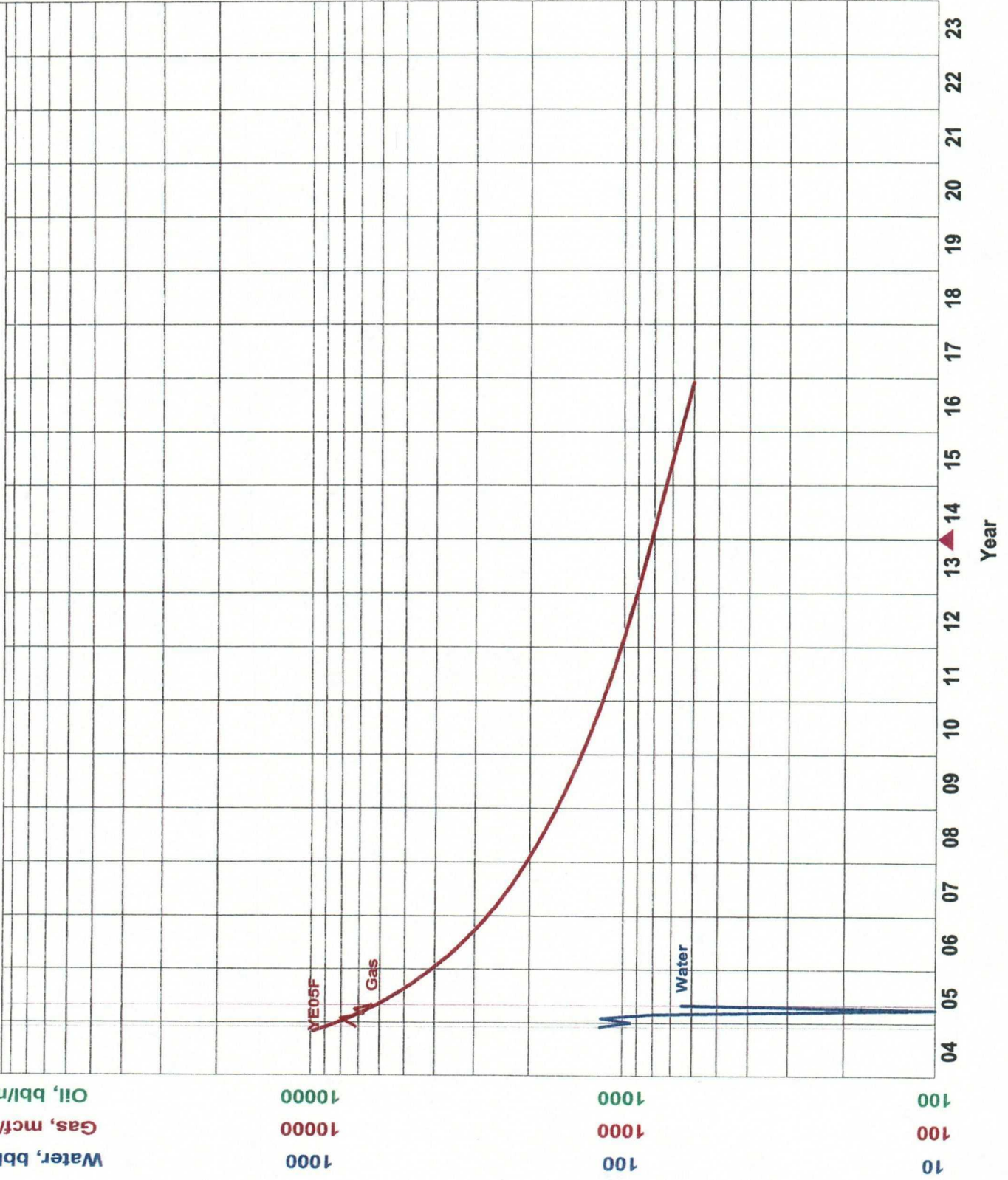
	OIL	GAS		P.W. %	P.W., M\$	\$/EBBL	\$/EMCF	
GROSS WELLS	0.0	1.0	LIFE, YRS.	23.67	5.00	681.440	9.31	1.55
GROSS ULT., MB & MMF	0.000	1700.006	DISCOUNT %	10.00	10.00	567.637	7.76	1.29
GROSS CUM., MB & MMF	0.000	1167.949	UNDISCOUNTED PAYOUT, YRS.	0.00	15.00	490.620	6.71	1.12
GROSS RES., MB & MMF	0.000	532.057	DISCOUNTED PAYOUT, YRS.	0.00	20.00	435.255	5.95	0.99
NET RES., MB & MMF	0.000	438.947	UNDISCOUNTED NET/INVEST.	0.00	25.00	393.534	5.38	0.90
NET REVENUE, M\$	0.000	1473.219	DISCOUNTED NET/INVEST.	0.00	30.00	360.914	4.93	0.82
INITIAL PRICE, \$	0.000	3.356	RATE-OF-RETURN, PCT.	100.00	40.00	313.016	4.28	0.71
INITIAL N.I., PCT.	0.000	82.500	INITIAL W.I., PCT.	100.000	60.00	254.210	3.47	0.58
					80.00	218.953	2.99	0.50
					100.00	195.169	2.67	0.44

NET EQUIVALENT OIL, MBBLS @ 6 TO 1 PARITY: 73.158
NET EQUIVALENT GAS, MMCF @ 1 TO 6 PARITY: 438.947

Federal A Battery - Federal A 13 #2 Totals for All History

Well Site	Year	Month	Day	Oil	Gas	Water	
Federal A 13 #2	2003	2003/11		0.00	0.00	0.00	
		Total		0.00	0.00	0.00	
	2004	2004/05		0.00	8637.03	0.00	
		2004/06		0.00	8898.00	0.00	
		2004/07		0.00	8922.00	0.00	
		2004/08		0.00	8750.00	0.00	
		2004/09		0.00	3315.00	0.00	
		2004/10		0.00	11131.00	0.00	
		2004/11		0.00	7935.60	41.65	
		2004/12		0.00	7732.43	70.05	
		Total		0.00	65321.06	111.70	
		2005	2005/01		0.00	7557.95	69.16
	2005/02		0.00	6398.63	54.00		
	2005/03		0.00	6699.44	6.66		
	2005/04		0.00	6000.85	60.09		
	2005/05		2005/05/01		0.00	0.00	0.00
			2005/05/02		0.00	0.00	0.00
			2005/05/03		0.00	0.00	0.00
			2005/05/04		0.00	0.00	0.00
			2005/05/05		0.00	0.00	0.00
			2005/05/06		0.00	0.00	0.00
			2005/05/07		0.00	0.00	0.00
			2005/05/08		0.00	133.42	0.00
			2005/05/09		0.00	123.43	2.22
			2005/05/10		0.00	292.79	1.11
			2005/05/11		0.00	255.21	1.67
			2005/05/12		0.00	232.53	1.67
	Total		0.00	1037.38	6.67		
	Total		0.00	27694.25	196.58		
	Total		0.00	93015.31	308.28		
	Total		0.00	93015.31	308.28		

FEDERAL A 5
BOUGH (DEVONIAN)
LEA, NM
LATIGO PETROLEUM INC



Oil, bbl/mo 1/2005 0
Ref= 0
Cum= 0

Gas, mcf/mo YE05F
Qual= 1/2005
Ref= 14867
Cum= 251185
Rem= 266052
EUR= 11.915
Yrs= 82.12.5
Qref= 50.000000
De= 10.000
Dmin= 0.999800
b= 608.3

Water, bbl/m 1/2005 331
Ref= 331
Cum= 331

FEDERAL, A 5
 LATIGO PETROLEUM INC
 BOUGH (DEVONIAN)
 LEA , NM
 1PDP MAJOR: GAS

Date: 05/16/2005
 Time: 09:00:50
 DBS: CENTRAL
 Settings: LPI_01_2005
 Scenario: YE05F

INPUT DATA

INITIAL CALCULATED DATA

ITEM NAME	Scheduling Rates			Schedule Until			Procedure		Ultimate	Last	Eff. Decl	Init. Rate	Final Rate
400 START	01/2005												
401 GAS	270.00	X	M/D	10.00	EXP	B/0.999	50.00	235.882	6/2013	63.2	8213.	872.	
402 "	X		20.00 M/D	X	YRS	EXP	10.00	265.895	11/2016	10.0	872.	608.	
500 PAJ/GAS	-2.16	X	\$/M	TO	LIFE	PC	0.00		11/2016		-2.160	-2.160	
501 PAJ/OIL	-2.57	X	\$/B	TO	LIFE	PC	0.00		11/2016		-2.570	-2.570	
502 PRI/GAS	01/2005 5.765	5.765	5.765	5.765	5.765	\$/Y			12/2009				
504 "	5.76	X	\$/M	TO	LIFE	PC	0.00		11/2016		5.765	5.765	
505 PRI/OIL	43.4600	X	\$/B	TO	LIFE	PC	0.00		11/2016		43.460	43.460	
600 STX/GAS	7.94		7.94 %	TO	LIFE	PC	0.00		12/2004		0.079	0.079	
601 STX/OIL	7.09		7.09 %	TO	LIFE	PC	0.00		12/2004		0.071	0.071	
602 OPC/T	1760.00	X	\$/M	TO	LIFE	PC	0.00		11/2016		1760.000	1760.000	
604 ATX	1.02	X	%	TO	LIFE	PC	0.00		11/2016		0.010	0.010	
705 LSE/WI	100.0000	D	%	TO	LIFE	FLAT	0.00		11/2016		1.000	1.000	
720 NET/OIL	82.5000	D	%	TO	LIFE	FLAT	0.00		11/2016		0.825	0.825	
740 NET/GAS	82.5000	D	%	TO	LIFE	FLAT	0.00		11/2016		0.825	0.825	

MISC. PARAMETERS

Item

Item

201 WELLS	0.00	1.00	
202 BTU	1.00		
203 CUMO, MB	0.00	CUMG, MMF	14.87
250 LOSS	NO		

PROJECT RUN SETTINGS

Base Date : 01/2002 Time Frames : 12,47*12,588
 P.W. Date : 01/2005 Primary PW% : 10.0 Discount Freq. : MO
 Report Date : 01/2005
 Qualifiers : Prod = YE05F Price = LPI Cost = LPI Owner = CORPNEW
 Title = DEFAULT Misc = YE05F Invest = POSTDRILL Overlay = YE05F

LATIGO PETROLEUM INC. CASH FLOW

AS OF DATE: 01/2005

FEDERAL A 5
LATIGO PETROLEUM INC
BOUGH (DEVONIAN)

DATE : 05/16/2005
TIME : 09:00:50
DBS : CENTRAL

LEA, NM
005
1PDP MAJOR: GAS

PRODUCTION: YE05F
OWNER : CORPNEW

SETTINGS : LPI_01_2
SCENARIO : YE05F

MO-YEAR	GROSS OIL PRODUCTION	GROSS GAS PRODUCTION	NET OIL PRODUCTION	NET GAS PRODUCTION	NET OIL PRICE	NET GAS PRICE	NET OIL SALES	NET GAS SALES	TOTAL NET SALES	INTERESTS	WORKING REVENUE
	MBBLS	MMCF	MBBLS	MMCF	\$/BBL	\$/MCF	M\$	M\$	M\$	PCT	PCT
12-2005	0.000	68.308	0.000	56.354	0.000	3.605	0.000	203.156	203.156	100.000	82.500
12-2006	0.000	39.952	0.000	32.960	0.000	3.605	0.000	118.822	118.822	100.000	82.500
12-2007	0.000	28.343	0.000	23.383	0.000	3.605	0.000	84.296	84.296	100.000	82.500
12-2008	0.000	21.983	0.000	18.136	0.000	3.605	0.000	65.379	65.379	100.000	82.500
12-2009	0.000	17.960	0.000	14.817	0.000	3.605	0.000	53.415	53.415	100.000	82.500
12-2010	0.000	15.184	0.000	12.527	0.000	3.605	0.000	45.160	45.160	100.000	82.500
12-2011	0.000	13.153	0.000	10.851	0.000	3.605	0.000	39.118	39.118	100.000	82.500
12-2012	0.000	11.601	0.000	9.571	0.000	3.605	0.000	34.503	34.503	100.000	82.500
12-2013	0.000	10.420	0.000	8.596	0.000	3.605	0.000	30.990	30.990	100.000	82.500
12-2014	0.000	9.418	0.000	7.770	0.000	3.605	0.000	28.012	28.012	100.000	82.500
12-2015	0.000	8.477	0.000	6.993	0.000	3.605	0.000	25.211	25.211	100.000	82.500
12-2016	0.000	2.633	0.000	2.172	0.000	3.605	0.000	7.830	7.830	100.000	82.500
12-2017											
12-2018											
12-2019											
12-2020											
12-2021											
12-2022											
12-2023											
12-2024											
S TOT	0.000	247.431	0.000	204.131	0.000	3.605	0.000	735.891	735.891	100.000	82.500
AFTER	0.000	0.000	0.000	0.000	0.000	0.000	0.000	0.000	0.000	0.000	0.000
TOTAL	0.000	247.431	0.000	204.131	0.000	3.605	0.000	735.891	735.891	100.000	82.500

MO-YEAR	GROSS OIL	WELLS GAS	SEVERANCE TAXES	NET ADVAL TAXES	OTHER EXPENSE	OPERATING EXPENSE	TOTAL OPER EXPENSES	EQUITY INVESTMENT	FUTURE NET CASHFLOW	CUMULATIVE CASHFLOW	CUM DISC. @ 10% CASHFLOW
			M\$	M\$	M\$	M\$	M\$	M\$	M\$	M\$	M\$
12-2005	0.	1.	16.131	1.908	0.000	21.120	23.028	0.000	163.998	163.998	157.384
12-2006	0.	1.	9.434	1.116	0.000	21.120	22.236	0.000	87.152	251.149	233.254
12-2007	0.	1.	6.693	0.792	0.000	21.120	21.912	0.000	55.691	306.840	277.291
12-2008	0.	1.	5.191	0.614	0.000	21.120	21.734	0.000	38.454	345.295	304.923
12-2009	0.	1.	4.241	0.502	0.000	21.120	21.622	0.000	27.553	372.847	322.919
12-2010	0.	1.	3.586	0.424	0.000	21.120	21.544	0.000	20.030	392.877	334.811
12-2011	0.	1.	3.106	0.367	0.000	21.120	21.487	0.000	14.524	407.402	342.651
12-2012	0.	1.	2.740	0.324	0.000	21.120	21.444	0.000	10.319	417.721	347.717
12-2013	0.	1.	2.461	0.291	0.000	21.120	21.411	0.000	7.119	424.840	350.893
12-2014	0.	1.	2.224	0.263	0.000	21.120	21.383	0.000	4.405	429.244	352.684
12-2015	0.	1.	2.002	0.237	0.000	21.120	21.357	0.000	1.852	431.096	353.372
12-2016	0.	1.	0.622	0.074	0.000	7.040	7.114	0.000	0.095	431.191	353.405
12-2017											
12-2018											
12-2019											
12-2020											
12-2021											
12-2022											
12-2023											
12-2024											
S TOT	0.	1.	58.430	6.910	0.000	239.360	246.270	0.000	431.191	431.191	353.405
AFTER	0.	0.	0.000	0.000	0.000	0.000	0.000	0.000	0.000	431.191	353.405
TOTAL	0.	1.	58.430	6.910	0.000	239.360	246.270	0.000	431.191	431.191	353.405

	OIL	GAS		P.W. %	P.W., M\$	\$/EBBL	\$/EMCF
GROSS WELLS	0.0	1.0	LIFE, YRS.	5.00	387.490	11.39	1.90
GROSS ULT., MB & MMF	0.000	262.298	DISCOUNT %	10.00	353.405	10.39	1.73
GROSS CUM., MB & MMF	0.000	14.867	UNDISCOUNTED PAYOUT, YRS.	15.00	326.153	9.59	1.60
GROSS RES., MB & MMF	0.000	247.431	DISCOUNTED PAYOUT, YRS.	20.00	303.899	8.93	1.49
NET RES., MB & MMF	0.000	204.131	UNDISCOUNTED NET/INVEST.	25.00	285.392	8.39	1.40
NET REVENUE, M\$	0.000	735.891	DISCOUNTED NET/INVEST.	30.00	269.758	7.93	1.32
INITIAL PRICE, \$	0.000	3.605	RATE-OF-RETURN, PCT.	40.00	244.771	7.19	1.20
INITIAL N.I., PCT.	0.000	82.500	INITIAL W.I., PCT.	60.00	210.489	6.19	1.03
				80.00	187.882	5.52	0.92
				100.00	171.707	5.05	0.84

NET EQUIVALENT OIL, MBBLS @ 6 TO 1 PARITY: 34.022
NET EQUIVALENT GAS, MMCF @ 1 TO 6 PARITY: 204.131

Federal A Battery - Federal A #5 Totals for All History

Well Site	Year	Month	Day	Oil	Gas	Water	
Federal A #5	2004	2004/05		0.00	0.00	0.00	
		2004/06		0.00	0.00	0.00	
		2004/07		0.00	0.00	0.00	
		2004/08		0.00	0.00	0.00	
		2004/09		0.00	0.00	0.00	
		2004/10		0.00	0.00	0.00	
		2004/11		0.00	7209.41	118.33	
		2004/12		0.00	7657.57	94.89	
		Total		0.00	14866.98	213.22	
	2005	2005/01		0.00	8027.05	117.52	
		2005/02		0.00	6841.37	81.00	
		2005/03		0.00	7245.56	9.98	
		2005/04		0.00	6414.15	64.98	
		2005/05	2005/05/01		0.00	0.00	0.00
			2005/05/02		0.00	0.00	0.00
			2005/05/03		0.00	0.00	0.00
			2005/05/04		0.00	0.00	0.00
			2005/05/05		0.00	0.00	0.00
			2005/05/06		0.00	0.00	0.00
			2005/05/07		0.00	320.00	10.00
			2005/05/08		0.00	256.58	8.34
			2005/05/09		0.00	236.57	4.45
			2005/05/10		0.00	232.21	2.22
			2005/05/11		0.00	234.79	1.67
			2005/05/12		0.00	227.47	1.67
		Total		0.00	1507.62	28.35	
		Total		0.00	30035.75	301.83	
		Total		0.00	44902.73	515.05	
Total		0.00	44902.73	515.05			