



418

ConocoPhillips
 San Juan Business Unit
 Land Department
 P.O. Box 4289
 Farmington, NM 87499-4289

February 28, 2013

Bureau of Land Management
 Farmington Resource Area
 6251 College Blvd, Ste A
 Farmington, NM 87402

Commissioner of Public Lands
 State of New Mexico
 PO Box 1148
 Santa Fe, NM 87501-1148

Oil Conservation Division
 State of New Mexico
 1220 S Saint Francis Dr
 Santa Fe, NM 87505

**RE: 2013 Plan of Development
 SAN JUAN 29-5 UNIT #14-08-001-437
 RIO ARRIBA COUNTY, NEW MEXICO**

Ladies and Gentlemen:

The following Participating Areas currently exist in the SAN JUAN 29-5:

FORMATION	EXPANSION	EFFECTIVE DATE
DAKOTA	014	01-FEB-99
FRUITLAND COAL	007	01-DEC-06
MESAVERDE	025	01-OCT-85
PICTURED CLIFFS	009	01-JAN-02

The **2012 Plan of Development** (or amendments thereto) provided for the following activity:

WELL NAME	FORMATION	TYPE	DEDICATION	STATUS
SAN JUAN 29-5 UNIT 43C	MESAVERDE	NEWDRILL - SINGLE	W2 022-029N-005W	CARRYOVER
SAN JUAN 29-5 UNIT 77B	MESAVERDE	NEWDRILL - SINGLE	W2 026-029N-005W	CARRYOVER
SAN JUAN 29-5 UNIT 77M	MESAVERDE / DAKOTA / MANCOS	NEWDRILL - TRIMINGLE	W2 026-029N-005W	CARRYOVER
SAN JUAN 29-5 UNIT 88M	MESAVERDE / DAKOTA / MANCOS	NEWDRILL - TRIMINGLE	E2 034-029N-005W	CARRYOVER
SAN JUAN 29-5 UNIT 91N	MESAVERDE	NEWDRILL - SINGLE	E2 035-29N-005W	CARRYOVER
SAN JUAN 29-5 UNIT 100A	MESAVERDE	NEWDRILL - SINGLE	E2 025-029N-005W	CARRYOVER
SAN JUAN 29-5 UNIT 101A	MESAVERDE	NEWDRILL - SINGLE	E2 026-029N-005W	CARRYOVER
SAN JUAN 29-5 UNIT 106A	MESAVERDE	NEWDRILL - SINGLE	W2 025-029N-005W	CARRYOVER
SAN JUAN 29-5 UNIT 107A	MESAVERDE / DAKOTA	NEWDRILL - COMMINGLE	W2 002-029N-005W	CARRYOVER
SAN JUAN 29-5 UNIT 109	FRUITLAND COAL / PICTURED CLIFFS	NEWDRILL - COMMINGLE	FTC W2 021-029N-005W PC SW4 021-029N-005W	CARRYOVER
SAN JUAN 29-5 UNIT 213S	FRUITLAND COAL / PICTURED CLIFFS	NEWDRILL - COMMINGLE	FTC W2 022-029N-005W PC NW4 022-029N-005W	CARRYOVER
SAN JUAN 29-5 UNIT 234	WILDCAT PARADOX	NEWDRILL - SINGLE	ALL 08-029N-005W	CARRYOVER
SAN JUAN 29-5 UNIT 235S	FRUITLAND COAL / PICTURED CLIFFS	NEWDRILL - COMMINGLE	FTC W2 015-029N-005W PC SW4 015-029N-005W	CARRYOVER
SAN JUAN 29-5 UNIT 236	FRUITLAND COAL / PICTURED CLIFFS	NEWDRILL - COMMINGLE	W2 023-029N-005W	CARRYOVER

SAN JUAN 29-5 UNIT
2013 PLAN OF DEVELOPMENT

Pursuant to Section 10 of the SAN JUAN 29-5 UNIT Agreement, ConocoPhillips Company, as Unit Operator, hereby submits the **2013 Plan of Development** as follows:

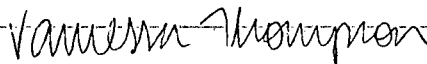
WELL NAME	FORMATION	TYPE	DEDICATION
SAN JUAN 29-5 UNIT 43C	MESAVERDE	NEWDRILL - SINGLE	W2 022-029N-005W
SAN JUAN 29-5 UNIT 77B	MESAVERDE	NEWDRILL - SINGLE	W2 026-029N-005W
SAN JUAN 29-5 UNIT 77M	MESAVERDE / DAKOTA / MANCOS	NEWDRILL - TRIMINGLE	W2 026-029N-005W
SAN JUAN 29-5 UNIT 88M	MESAVERDE / DAKOTA / MANCOS	NEWDRILL - TRIMINGLE	E2 034-029N-005W
SAN JUAN 29-5 UNIT 91N	MESAVERDE	NEWDRILL - SINGLE	E2 035-29N-005W
SAN JUAN 29-5 UNIT 100A	MESAVERDE	NEWDRILL - SINGLE	E2 025-029N-005W
SAN JUAN 29-5 UNIT 101A	MESAVERDE	NEWDRILL - SINGLE	E2 026-029N-005W
SAN JUAN 29-5 UNIT 106A	MESAVERDE	NEWDRILL - SINGLE	W2 025-029N-005W
SAN JUAN 29-5 UNIT 107A	MESAVERDE / DAKOTA	NEWDRILL - COMMINGLE	W2 002-029N-005W
SAN JUAN 29-5 UNIT 109	FRUITLAND COAL / PICTURED CLIFFS	NEWDRILL - COMMINGLE	FTC W2 021-029N-005W PC SW40 21-029N-005W
SAN JUAN 29-5 UNIT 213S	FRUITLAND COAL / PICTURED CLIFFS	NEWDRILL - COMMINGLE	FTC W2 022-029N-005W PC NW4 022-029N-005W
SAN JUAN 29-5 UNIT 234	WILDCAT PARADOX	NEWDRILL - SINGLE	ALL 008-029N-005W
SAN JUAN 29-5 UNIT 235S	FRUITLAND COAL / PICTURED CLIFFS	NEWDRILL - COMMINGLE	FTC W2 015-029N-005W PC SW4 015-029N-005W
SAN JUAN 29-5 UNIT 236	FRUITLAND COAL / PICTURED CLIFFS	NEWDRILL - COMMINGLE	W2 023-029N-005W

The working interest owners are being furnished a copy of this letter, well status listing and enclosed map. ConocoPhillips, as Unit Operator, will drill any offset wells required to prevent drainage of unitized substances and any other wells deemed necessary by the working interest owners or Unit Operator.

In accordance to Section 10 of the Unit Agreement, please provide your approvals by executing and returning a copy of the attached approval page to the undersigned.

Please contact me at (505) 324-6180 if there are any questions regarding this letter.

Sincerely,



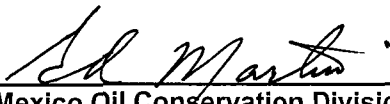
Vanessa Thompson, RPL
Land Supervisor, SE

VT/ld
xc: San Juan 29-5 Unit, 3.0 (2013)
San Juan 29-5 Unit Working Interest Owners

SAN JUAN 29-5 UNIT
2013 PLAN OF DEVELOPMENT APPROVALS

Bureau of Land Management

Date



New Mexico Oil Conservation Division

3/5/2013
Date

New Mexico Commissioner of Public Lands

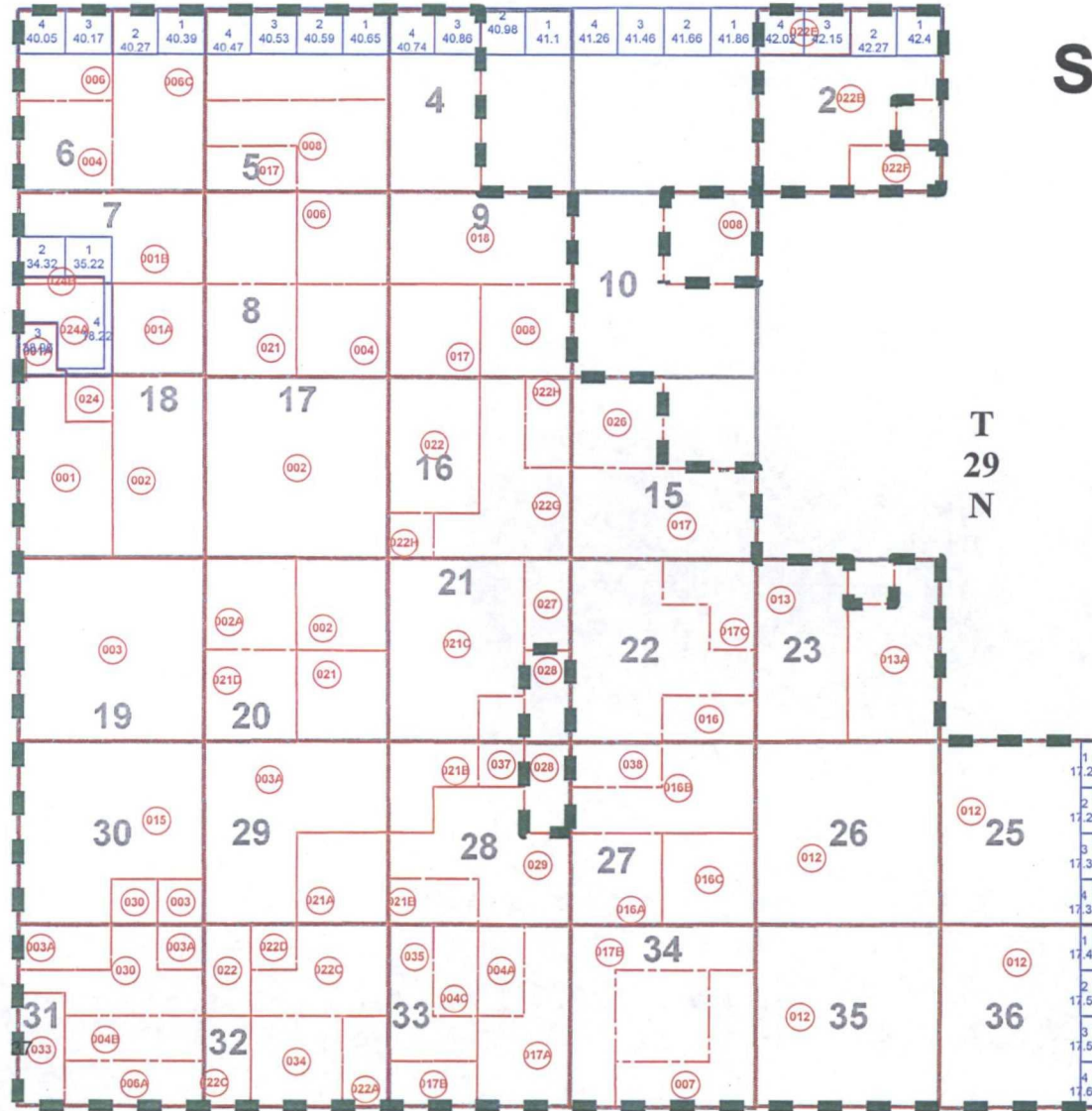
Date

WORKING INTEREST OWNERS SAN JUAN 29-5 UNIT

BETTY T JOHNSTON MARITAL TRUST
BIG SNOWY EXPLORATION LP
BP AMERICA PRODUCTION COMPANY
BURLINGTON RESOURCES O&G CO LP
CHARLES W GAY
CONOCOPHILLIPS COMPANY
EULA MAY JOHNSTON TRUST
GRAYFORE PARTNERS LP
J&M RAYMOND LTD
LORRAYN GAY HACKER
PGC GAS COMPANY
PHILLIPS NEW MEXICO PARTNERS LP
PHILLIPS SAN JUAN LTD PARTNERSHIP
RESOURCE DEVELOPMENT TECHNOLOGY LLC
RKC INC
SAN JUAN BASIN PARTNERSHIP
T H MCELVAIN OIL & GAS LLLP
TAMACAM LLC
V A JOHNSTON LTD
VAUGHAN-MCELVAIN ENERGY INC
VEVA JEAN GIBBARD
WPX ENERGY INC

R5W

San Juan 29-5 Unit



**SAN JUAN 29-5 UNIT
STATUS OF WELLS REPORT 02/08/13**

Api Well Code	Name	CTY	ST	TWN	RGE	SEC	Unit Letter	Lse ID	Oper ID	Rsvr Name	PROD STAT	COMP TYPE	COMP DATE	ABANDON DATE	INITIAL PROD DATE	FIRST SALES DATE
300392253400S01	SAN JUAN 29-5 100 MV	RIO ARRIBA	NM	29	N	5	W	25		A728832	12001	BLANCO::MESAVERDE	11	G	6/30/81	6/30/81
300393078400N01	SAN JUAN 29-5 108A MV NU	RIO ARRIBA	NM							A718489	12001	BLANCO MESAVERDE	11	G	9/17/10	9/17/10
300393078400N01	SAN JUAN 29-5 108A MV NU	RIO ARRIBA	NM							A718489	12001	BLANCO MESAVERDE	11	G	9/17/10	9/17/10
300393078400N02	SAN JUAN 29-5 108A MV UT	RIO ARRIBA	NM							A650111	12001	BLANCO MESAVERDE	11	G	9/17/10	9/17/10
300392945100N02	SAN JUAN 29-5 13F DK NU	RIO ARRIBA	NM	29	N	5	W	30	B	A709621	12001	BASIN::DAKOTA	11	G	7/1/06	
300392945100N02	SAN JUAN 29-5 13F DK NU	RIO ARRIBA	NM	29	N	5	W	30	B	A709621	12001	BASIN::DAKOTA	11	G	7/1/06	
300392945100N01	SAN JUAN 29-5 13F DK UT	RIO ARRIBA	NM	29	N	5	W	30	B	A650265	12001	BASIN::DAKOTA	11	G	7/1/06	
300392945100N03	SAN JUAN 29-5 13F MV UT	RIO ARRIBA	NM	29	N	5	W	30	B	A650111	12001	BLANCO::MESAVERDE	11	G	7/1/06	
300392655800N01	SAN JUAN 29-5 13M DK NU	RIO ARRIBA	NM							A709621	12001	BASIN::DAKOTA	11	G	1/9/02	1/9/02
300392655800N02	SAN JUAN 29-5 13M DK UT	RIO ARRIBA	NM							A650265	12001	BASIN::DAKOTA	11	G	1/9/02	1/9/02
300392655800N03	SAN JUAN 29-5 13M MV UT	RIO ARRIBA	NM							A650111	12001	BLANCO::MESAVERDE	11	G	1/9/02	1/9/02
300392453500S01	SAN JUAN 29-5 203 FC	RIO ARRIBA	NM	29	N	5	W	6		A728834	12001	BASIN::FRUITLAND COAL	11	G	1/24/90	
300392508100S01	SAN JUAN 29-5 219 FC	RIO ARRIBA	NM	29	N	5	W	4		A728834	12001	BASIN::FRUITLAND COAL	11	G	10/13/92	
300392508600S01	SAN JUAN 29-5 225 FC	RIO ARRIBA	NM	29	N	5	W	6		A728834	12001	BASIN::FRUITLAND COAL	11	G	9/16/92	
300392507600S01	SAN JUAN 29-5 226 FC	RIO ARRIBA	NM	29	N	5	W	7		A728834	12001	BASIN::FRUITLAND COAL	11	G	10/1/92	
300392522600S01	SAN JUAN 29-5 230 FC	RIO ARRIBA	NM	29	N	5	W	5		A728834	12001	BASIN::FRUITLAND COAL	11	G	12/21/92	
300390761400S01	SAN JUAN 29-5 26 01	RIO ARRIBA	NM	29	N	5	W	18		A728832	12001	BLANCO::MESAVERDE	61	G	5/26/58	6/1/58
300390754300N02	SAN JUAN 29-5 40 MV NU	RIO ARRIBA	NM					28	G	A710507	12001	BLANCO::MESAVERDE	11	G	4/1/06	
300390754300N02	SAN JUAN 29-5 40 MV NU	RIO ARRIBA	NM					28	G	A710507	12001	BLANCO::MESAVERDE	11	G	4/1/06	
300390754300N02	SAN JUAN 29-5 40 MV NU	RIO ARRIBA	NM					28	G	A710507	12001	BLANCO::MESAVERDE	11	G	4/1/06	
300390754300N02	SAN JUAN 29-5 40 MV NU	RIO ARRIBA	NM					28	G	A710507	12001	BLANCO::MESAVERDE	11	G	4/1/06	
300390754300N01	SAN JUAN 29-5 40 MV UT	RIO ARRIBA	NM					28	G	A650111	12001	BLANCO::MESAVERDE	11	G	4/1/06	
300390759900N02	SAN JUAN 29-5 46 MV NU	RIO ARRIBA	NM					21	B	A710505	12001	BLANCO::MESAVERDE	11	G		
300390759900N02	SAN JUAN 29-5 46 MV NU	RIO ARRIBA	NM					21	B	A710505	12001	BLANCO::MESAVERDE	11	G		
300390759900N01	SAN JUAN 29-5 46 MV UT	RIO ARRIBA	NM					21	B	A650111	12001	BLANCO::MESAVERDE	11	G		
300390753100N02	SAN JUAN 29-5 6 MV NU	RIO ARRIBA	NM					27	K	A710784	12001	BASIN::GALLUP-DAKOTA	99	G		
300390753100N01	SAN JUAN 29-5 6 MV UT	RIO ARRIBA	NM					27	K	A650111	12001	BLANCO::MESAVERDE	11	G		
300392106500N02	SAN JUAN 29-5 69 DK NU	RIO ARRIBA	NM						I	A710502	12001	BASIN::DAKOTA	11	G	4/1/06	
300392106500N02	SAN JUAN 29-5 69 DK NU	RIO ARRIBA	NM						I	A710502	12001	BASIN::DAKOTA	11	G	4/1/06	
300392106500N02	SAN JUAN 29-5 69 DK NU	RIO ARRIBA	NM						I	A710502	12001	BASIN::DAKOTA	11	G	4/1/06	
300392106500N02	SAN JUAN 29-5 69 DK NU	RIO ARRIBA	NM						I	A710502	12001	BASIN::DAKOTA	11	G	4/1/06	
300392106500N01	SAN JUAN 29-5 69 DK UT	RIO ARRIBA	NM						I	A650265	12001	BASIN::DAKOTA	11	G	4/1/06	
300392106500N04	SAN JUAN 29-5 69 MV NU	RIO ARRIBA	NM					21	I	A709524	12001	BLANCO::MESAVERDE	11	G	4/1/06	
300392106500N04	SAN JUAN 29-5 69 MV NU	RIO ARRIBA	NM					21	I	A709524	12001	BLANCO::MESAVERDE	11	G	4/1/06	
300392106500N04	SAN JUAN 29-5 69 MV NU	RIO ARRIBA	NM					21	I	A709524	12001	BLANCO::MESAVERDE	11	G	4/1/06	
300392106500N03	SAN JUAN 29-5 69 MV UT	RIO ARRIBA	NM					21	I	A650111	12001	BLANCO::MESAVERDE	11	G	4/1/06	
300392972700N01	SAN JUAN 29-5 69F DK NU	RIO ARRIBA	NM					21		A710500	12001	BASIN::DAKOTA	11	G		
300392972700N01	SAN JUAN 29-5 69F DK NU	RIO ARRIBA	NM					21		A710500	12001	BASIN::DAKOTA	11	G		
300392972700N02	SAN JUAN 29-5 69F DK UT	RIO ARRIBA	NM					21		A650265	12001	BASIN::DAKOTA	11	G		
300392972700N03	SAN JUAN 29-5 69F MV NU	RIO ARRIBA	NM					21		A710499	12001	BLANCO::MESAVERDE	11	G		
300392972700N03	SAN JUAN 29-5 69F MV NU	RIO ARRIBA	NM					21		A710499	12001	BLANCO::MESAVERDE	11	G		
300392972700N04	SAN JUAN 29-5 69F MV UT	RIO ARRIBA	NM					21		A650111	12001	BLANCO::MESAVERDE	11	G		
300392972900N02	SAN JUAN 29-5 69M DK NU	RIO ARRIBA	NM					21	O	A710503	12001	BASIN::DAKOTA	11	G		
300392972900N02	SAN JUAN 29-5 69M DK NU	RIO ARRIBA	NM					21	O	A710503	12001	BASIN::DAKOTA	11	G		
300392972900N01	SAN JUAN 29-5 69M DK UT	RIO ARRIBA	NM					21	O	A650265	12001	BASIN::DAKOTA	11	G		
300392972900N03	SAN JUAN 29-5 69M MV NU	RIO ARRIBA	NM					21	O	A710504	12001	BLANCO::MESAVERDE	11	G		
300392972900N03	SAN JUAN 29-5 69M MV NU	RIO ARRIBA	NM					21	O	A710504	12001	BLANCO::MESAVERDE	11	G		
300392972900N04	SAN JUAN 29-5 69M MV UT	RIO ARRIBA	NM					21	O	A650111	12001	BLANCO::MESAVERDE	11	G		
300392105000N02	SAN JUAN 29-5 70 DK NU	RIO ARRIBA	NM					28	H	A710506	12001	BASIN::DAKOTA	11	G	4/1/06	
300392105000N02	SAN JUAN 29-5 70 DK NU	RIO ARRIBA	NM					28	H	A710506	12001	BASIN::DAKOTA	11	G	4/1/06	

PRODUCTION STATUS

- 11 - FLOWING WELL
- 41 - SHUT IN
- 59 - SOLD
- 61 - TEMP ABANDON
- 71 - PERM ABANDON ZONE
- 72 - PERM ABANDON WELL
- PA - PLUG ABANDON
- PS - PERM SHUT-IN

SAN JUAN 29-5 UNIT
STATUS OF WELLS REPORT 02/08/13

Api Well Code	Name	CTY	ST	TWN	RGE	SEC	Unit Letter	Lse ID	Oper ID	Rsvr Name	PROD STAT	COMP TYPE	COMP DATE	ABANDON DATE	INITIAL PROD DATE	FIRST SALES DATE	
300392105000N02	SAN JUAN 29-5 70 DK NU	RIO ARRIBA	NM			28	H	A710506	12001	BASIN::DAKOTA	11	G	4/1/06				
300392105000N02	SAN JUAN 29-5 70 DK NU	RIO ARRIBA	NM			28	H	A710506	12001	BASIN::DAKOTA	11	G	4/1/06				
300392105000N01	SAN JUAN 29-5 70 DK UT	RIO ARRIBA	NM			28	H	A650265	12001	BASIN::DAKOTA	11	G	4/1/06				
300392966700N02	SAN JUAN 29-5 70F DK NU	RIO ARRIBA	NM			28	P	A710290	12001	BASIN::DAKOTA	11	G					
300392966700N02	SAN JUAN 29-5 70F DK NU	RIO ARRIBA	NM			28	P	A710290	12001	BASIN::DAKOTA	11	G					
300392966700N01	SAN JUAN 29-5 70F DK UT	RIO ARRIBA	NM			28	P	A650265	12001	BASIN::DAKOTA	11	G					
300392966700N04	SAN JUAN 29-5 70F MV NU	RIO ARRIBA	NM			28	P	A710291	12001	BLANCO::MESAVERDE	11	G					
300392966700N04	SAN JUAN 29-5 70F MV NU	RIO ARRIBA	NM			28	P	A710291	12001	BLANCO::MESAVERDE	11	G					
300392966700N03	SAN JUAN 29-5 70F MV UT	RIO ARRIBA	NM			28	P	A650111	12001	BLANCO::MESAVERDE	11	G					
300392965300N02	SAN JUAN 29-5 70G DK NU	RIO ARRIBA	NM			28	B	A710292	12001	BASIN::DAKOTA	11	G					
300392965300N02	SAN JUAN 29-5 70G DK NU	RIO ARRIBA	NM			28	B	A710292	12001	BASIN::DAKOTA	11	G					
300392965300N01	SAN JUAN 29-5 70G DK UT	RIO ARRIBA	NM			28	B	A650265	12001	BASIN::DAKOTA	11	G					
300392965300N04	SAN JUAN 29-5 70G MV NU	RIO ARRIBA	NM			28	B	A710289	12001	BLANCO::MESAVERDE	11	G					
300392965300N04	SAN JUAN 29-5 70G MV NU	RIO ARRIBA	NM			28	B	A710289	12001	BLANCO::MESAVERDE	11	G					
300392965300N03	SAN JUAN 29-5 70G MV UT	RIO ARRIBA	NM			28	B	A650111	12001	BLANCO::MESAVERDE	11	G					
300392629900N02	SAN JUAN 29-5 70M DK NU	RIO ARRIBA	NM			28	O	A710506	12001	BASIN::DAKOTA	11	G					
300392629900N02	SAN JUAN 29-5 70M DK NU	RIO ARRIBA	NM			28	O	A710506	12001	BASIN::DAKOTA	11	G					
300392629900N01	SAN JUAN 29-5 70M DK UT	RIO ARRIBA	NM			28	O	A650265	12001	BASIN::DAKOTA	11	G					
300392629900N04	SAN JUAN 29-5 70M MV NU	RIO ARRIBA	NM			28	O	A710512	12001	BLANCO::MESAVERDE	11	G					
300392629900N04	SAN JUAN 29-5 70M MV NU	RIO ARRIBA	NM			28	O	A710512	12001	BLANCO::MESAVERDE	11	G					
300392629900N03	SAN JUAN 29-5 70M MV UT	RIO ARRIBA	NM			28	O	A650111	12001	BLANCO::MESAVERDE	11	G					
300392145400N02	SAN JUAN 29-5 80 PC NU	RIO ARRIBA	NM			23	G	A650135	12001	GOBERNADOR:PICTURED CLIFF	11	G					
300392145400N01	SAN JUAN 29-5 80 PC UT	RIO ARRIBA	NM			23	G	A650108	12001	GOBERNADOR:PICTURED CLIFF	11	G					
300393021900S01	SAN JUAN 29-5 91F DK-TA	RIO ARRIBA	NM	29	N	5	W	35	J	A650265	12001	BASIN::DAKOTA	61	G	9/3/07	9/25/07	9/25/07
300393078400S01	SAN JUAN 29-5 COM 108A MV	RIO ARRIBA	NM	29	N	5	W	15	P	A650111	12001	BLANCO::MESAVERDE	11	G	9/24/10	9/17/10	9/24/10
300392655800S01	SAN JUAN 29-5 SPORR 13M	RIO ARRIBA	NM	29	N	5	W	30		A721060	12001	BASIN::DAKOTA	99	G	6/15/01		
300392655800S01	SAN JUAN 29-5 SPORR 13M	RIO ARRIBA	NM	29	N	5	W	30		A721060	12001	BASIN::DAKOTA	99	G	6/15/01		
300392753800S01	SAN JUAN 29-5 SPORR 32F	RIO ARRIBA	NM	29	N	5	W	29		A721060	12001	BASIN::DAKOTA	99	G	6/6/05	6/24/05	6/24/05
300392753700S01	SAN JUAN 29-5 SPORR 32G	RIO ARRIBA	NM	29	N	5	W	29		A721060	12001	BASIN::DAKOTA	99	G	7/6/05	7/28/05	7/28/05
300392581700S01	SAN JUAN 29-5 SPORR 32M	RIO ARRIBA	NM	29	N	5	W	29		A721060	12001	BASIN::DAKOTA	99	G	1/31/99	2/23/99	2/23/99
300392029600S01	SAN JUAN 29-5 SPORR 51	RIO ARRIBA	NM	29	N	5	W	19		A721060	12001	BASIN::DAKOTA	99	G	3/2/70		
300392971200S01	SAN JUAN 29-5 SPORR 51F	RIO ARRIBA	NM	29	N	5	W	19		A721060	12001	BASIN::DAKOTA	99	G	4/7/06		
300392971200S01	SAN JUAN 29-5 SPORR 51F	RIO ARRIBA	NM	29	N	5	W	19		A721060	12001	BASIN::DAKOTA	99	G	4/7/06		
300392656200S01	SAN JUAN 29-5 SPORR 51M	RIO ARRIBA	NM	29	N	5	W	19		A721060	12001	BASIN::DAKOTA	99	G	6/29/01		
300392656200S01	SAN JUAN 29-5 SPORR 51M	RIO ARRIBA	NM	29	N	5	W	19		A721060	12001	BASIN::DAKOTA	99	G	6/29/01		
300392035400S01	SAN JUAN 29-5 SPORR 52	RIO ARRIBA	NM	29	N	5	W	29		A721060	12001	BASIN::DAKOTA	99	G	3/9/71		
300392933300S01	SAN JUAN 29-5 SPORR 52G	RIO ARRIBA	NM	29	N	5	W	29		A721060	12001	BASIN::DAKOTA	99	G	1/17/06	1/31/06	1/31/06
300392933300S01	SAN JUAN 29-5 SPORR 52G	RIO ARRIBA	NM	29	N	5	W	29		A721060	12001	BASIN::DAKOTA	99	G	1/17/06	1/31/06	1/31/06
300392631000S01	SAN JUAN 29-5 SPORR 52M	RIO ARRIBA	NM	29	N	5	W	29		A721060	12001	BASIN::DAKOTA	99	G	4/25/00		
300392631000S01	SAN JUAN 29-5 SPORR 52M	RIO ARRIBA	NM	29	N	5	W	29		A721060	12001	BASIN::DAKOTA	99	G	4/25/00		
300392035600S01	SAN JUAN 29-5 SPORR 53	RIO ARRIBA	NM	29	N	5	W	32		A721060	12001	BASIN::DAKOTA	99	G	3/23/71		
300392035600S01	SAN JUAN 29-5 SPORR 53	RIO ARRIBA	NM	29	N	5	W	32		A721060	12001	BASIN::DAKOTA	99	G	3/23/71		
300392920700S01	SAN JUAN 29-5 SPORR 53F	RIO ARRIBA	NM	29	N	5	W	32		A721060	12001	BASIN::DAKOTA	99	G	7/6/05	7/21/05	7/21/05
300392920700S01	SAN JUAN 29-5 SPORR 53F	RIO ARRIBA	NM	29	N	5	W	32		A721060	12001	BASIN::DAKOTA	99	G	7/6/05	7/21/05	7/21/05
300392548100S01	SAN JUAN 29-5 SPORR 53M	RIO ARRIBA	NM	29	N	5	W	32		A721060	12001	BASIN::DAKOTA	99	G	11/27/95		
300392548100S01	SAN JUAN 29-5 SPORR 53M	RIO ARRIBA	NM	29	N	5	W	32		A721060	12001	BASIN::DAKOTA	99	G	11/27/95		
300392037000S01	SAN JUAN 29-5 SPORR 54	RIO ARRIBA	NM	29	N	5	W	31		A721060	12001	BASIN::DAKOTA	99	G	5/20/71		
300392037000S01	SAN JUAN 29-5 SPORR 54	RIO ARRIBA	NM	29	N	5	W	31		A721060	12001	BASIN::DAKOTA	99	G	5/20/71		
300392658200S01	SAN JUAN 29-5 SPORR 54M	RIO ARRIBA	NM	29	N	5	W	31		A721060	12001	BASIN::DAKOTA	99	G	3/6/02		
300392658200S01	SAN JUAN 29-5 SPORR 54M	RIO ARRIBA	NM	29	N	5	W	31		A721060	12001	BASIN::DAKOTA	99	G	3/6/02		

PRODUCTION STATUS

- 11 - FLOWING WELL
- 41 - SHUT IN
- 59 - SOLD
- 61 - TFMP ARANDON
- 71 - PERM ABANDON ZONE
- 72 - PERM ABANDON WELL
- PA - PLUG ABANDON
- PS - PFRM SHUT-IN

**SAN JUAN 29-5 UNIT
STATUS OF WELLS REPORT 02/08/13**

Api Well Code	Name	CTY	ST	TWN	RGE	SEC	Unit Letter	Lse ID	Oper ID	Rsvr Name	PROD STAT	COMP TYPE	COMP DATE	ABANDON DATE	INITIAL PROD DATE	FIRST SALES DATE
300392045800S01	SAN JUAN 29-5 SPORR 55	RIO ARRIBA	NM	29	N	5	W 18	A721060	12001	BASIN::DAKOTA	99	G	4/5/72			
300392045800S01	SAN JUAN 29-5 SPORR 55	RIO ARRIBA	NM	29	N	5	W 18	A721060	12001	BASIN::DAKOTA	99	G	4/5/72			
300392656400S01	SAN JUAN 29-5 SPORR 55M	RIO ARRIBA	NM	29	N	5	W 18	A721060	12001	BASIN::DAKOTA	99	G	5/15/01			
300392656400S01	SAN JUAN 29-5 SPORR 55M	RIO ARRIBA	NM	29	N	5	W 18	A721060	12001	BASIN::DAKOTA	99	G	5/15/01			
300392658300S01	SAN JUAN 29-5 SPORR 56M	RIO ARRIBA	NM	29	N	5	W 19	A721060	12001	BASIN::DAKOTA	99	G	6/2/01			
300392658300S01	SAN JUAN 29-5 SPORR 56M	RIO ARRIBA	NM	29	N	5	W 19	A721060	12001	BASIN::DAKOTA	99	G	6/2/01			
300392045000S01	SAN JUAN 29-5 SPORR 57	RIO ARRIBA	NM	29	N	5	W 20	A721060	12001	BASIN::DAKOTA	99	G	4/11/72			
300392972300S01	SAN JUAN 29-5 SPORR 57F	RIO ARRIBA	NM	29	N	5	W 20	A721060	12001	BASIN::DAKOTA	99	G	7/11/06		9/1/06	9/1/06
300392972300S01	SAN JUAN 29-5 SPORR 57F	RIO ARRIBA	NM	29	N	5	W 20	A721060	12001	BASIN::DAKOTA	99	G	7/11/06		9/1/06	9/1/06
300392583300S01	SAN JUAN 29-5 SPORR 57M	RIO ARRIBA	NM	29	N	5	W 20	A721060	12001	BASIN::DAKOTA	99	G	1/1/99			
300392583300S01	SAN JUAN 29-5 SPORR 57M	RIO ARRIBA	NM	29	N	5	W 20	A721060	12001	BASIN::DAKOTA	99	G	1/1/99			
300392045900S01	SAN JUAN 29-5 SPORR 58	RIO ARRIBA	NM	29	N	5	W 30	A721060	12001	BASIN::DAKOTA	99	G	4/14/72			
300392045900S01	SAN JUAN 29-5 SPORR 58	RIO ARRIBA	NM	29	N	5	W 30	A721060	12001	BASIN::DAKOTA	99	G	4/14/72			
300392658000S01	SAN JUAN 29-5 SPORR 58M	RIO ARRIBA	NM	29	N	5	W 30	A721060	12001	BASIN::DAKOTA	99	G	7/12/01			
300392658000S01	SAN JUAN 29-5 SPORR 58M	RIO ARRIBA	NM	29	N	5	W 30	A721060	12001	BASIN::DAKOTA	99	G	7/12/01			
300392044800S01	SAN JUAN 29-5 SPORR 59	RIO ARRIBA	NM	29	N	5	W 31	A721060	12001	BASIN::DAKOTA	99	G	7/10/72			
300392044800S01	SAN JUAN 29-5 SPORR 59	RIO ARRIBA	NM	29	N	5	W 31	A721060	12001	BASIN::DAKOTA	99	G	7/10/72			
300392658100S01	SAN JUAN 29-5 SPORR 59M	RIO ARRIBA	NM	29	N	5	W 31	A721060	12001	BASIN::DAKOTA	99	G				
300392658100S01	SAN JUAN 29-5 SPORR 59M	RIO ARRIBA	NM	29	N	5	W 31	A721060	12001	BASIN::DAKOTA	99	G				
300392786000S01	SAN JUAN 29-5 SPORR 5F	RIO ARRIBA	NM	29	N	5	W 33	A721060	12001	BASIN::DAKOTA	99	G	5/31/05		6/17/05	6/17/05
300392786000S01	SAN JUAN 29-5 SPORR 5F	RIO ARRIBA	NM	29	N	5	W 33	A721060	12001	BASIN::DAKOTA	99	G	5/31/05		6/17/05	6/17/05
300392786600S01	SAN JUAN 29-5 SPORR 5M	RIO ARRIBA	NM	29	N	5	W 33	A721060	12001	BASIN::DAKOTA	99	G	9/9/05			
300392786600S01	SAN JUAN 29-5 SPORR 5M	RIO ARRIBA	NM	29	N	5	W 33	A721060	12001	BASIN::DAKOTA	99	G	9/9/05			
300392045600S01	SAN JUAN 29-5 SPORR 60	RIO ARRIBA	NM	29	N	5	W 32	A721060	12001	BASIN::DAKOTA	99	G	4/11/72			
300392927500S01	SAN JUAN 29-5 SPORR 60F	RIO ARRIBA	NM	29	N	5	W 32	A721060	12001	BASIN::DAKOTA	99	G	10/27/05			
300392927500S01	SAN JUAN 29-5 SPORR 60F	RIO ARRIBA	NM	29	N	5	W 32	A721060	12001	BASIN::DAKOTA	99	G	10/27/05			
300392927400S01	SAN JUAN 29-5 SPORR 60G	RIO ARRIBA	NM	29	N	5	W 32	A721060	12001	BASIN::DAKOTA	99	G	10/12/05			
300392927400S01	SAN JUAN 29-5 SPORR 60G	RIO ARRIBA	NM	29	N	5	W 32	A721060	12001	BASIN::DAKOTA	99	G	10/12/05			
300392630000S01	SAN JUAN 29-5 SPORR 60M	RIO ARRIBA	NM	29	N	5	W 32	A721060	12001	BASIN::DAKOTA	99	G	5/25/00			
300392630000S01	SAN JUAN 29-5 SPORR 60M	RIO ARRIBA	NM	29	N	5	W 32	A721060	12001	BASIN::DAKOTA	99	G	5/25/00			
300392062500S01	SAN JUAN 29-5 SPORR 62	RIO ARRIBA	NM	29	N	5	W 7	A721060	12001	BASIN::DAKOTA	99	G	12/27/73			
300392927300S01	SAN JUAN 29-5 SPORR 62F	RIO ARRIBA	NM	29	N	5	W 7	A721060	12001	BASIN::DAKOTA	99	G	11/7/05			12/20/05
300392927300S01	SAN JUAN 29-5 SPORR 62F	RIO ARRIBA	NM	29	N	5	W 7	A721060	12001	BASIN::DAKOTA	99	G	11/7/05			12/20/05
300392938500S01	SAN JUAN 29-5 SPORR 62M	RIO ARRIBA	NM	29	N	5	W 7	A721060	12001	BASIN::DAKOTA	99	G	9/27/06		11/20/06	11/20/06
300392071400S01	SAN JUAN 29-5 SPORR 63	RIO ARRIBA	NM	29	N	5	W 17	A721060	12001	BASIN::DAKOTA	99	G	12/8/73			
300392631100S01	SAN JUAN 29-5 SPORR 63M	RIO ARRIBA	NM	29	N	5	W 17	A721060	12001	BASIN::DAKOTA	99	G	4/12/00			
300392631100S01	SAN JUAN 29-5 SPORR 63M	RIO ARRIBA	NM	29	N	5	W 17	A721060	12001	BASIN::DAKOTA	99	G	4/12/00			
300392071100S01	SAN JUAN 29-5 SPORR 64	RIO ARRIBA	NM	29	N	5	W 21	A721060	12001	BASIN::DAKOTA	99	G	12/4/73			
300392071100S01	SAN JUAN 29-5 SPORR 64	RIO ARRIBA	NM	29	N	5	W 21	A721060	12001	BASIN::DAKOTA	99	G	12/4/73			
300392583400S01	SAN JUAN 29-5 SPORR 64M	RIO ARRIBA	NM	29	N	5	W 21	A721060	12001	BASIN::DAKOTA	99	G	1/4/99			
300392583400S01	SAN JUAN 29-5 SPORR 64M	RIO ARRIBA	NM	29	N	5	W 21	A721060	12001	BASIN::DAKOTA	99	G	1/4/99			
300392070800S01	SAN JUAN 29-5 SPORR 65	RIO ARRIBA	NM	29	N	5	W 28	A721060	12001	BASIN::DAKOTA	99	G	9/26/73			
300392070800S01	SAN JUAN 29-5 SPORR 65	RIO ARRIBA	NM	29	N	5	W 28	A721060	12001	BASIN::DAKOTA	99	G	9/26/73			
300392549200S01	SAN JUAN 29-5 SPORR 65M	RIO ARRIBA	NM	29	N	5	W 28	A721060	12001	BASIN::DAKOTA	99	G	12/1/97			
300392549200S01	SAN JUAN 29-5 SPORR 65M	RIO ARRIBA	NM	29	N	5	W 28	A721060	12001	BASIN::DAKOTA	99	G	12/1/97			
300392077300S01	SAN JUAN 29-5 SPORR 66	RIO ARRIBA	NM	29	N	5	W 33	A721060	12001	BASIN::DAKOTA	99	G	12/28/73			
300392973900S01	SAN JUAN 29-5 SPORR 66F	RIO ARRIBA	NM	29	N	5	W 33	A721060	12001	BASIN::DAKOTA	99	G	6/29/06		8/9/06	8/9/06
300392973900S01	SAN JUAN 29-5 SPORR 66F	RIO ARRIBA	NM	29	N	5	W 33	A721060	12001	BASIN::DAKOTA	99	G	6/29/06		8/9/06	8/9/06
300392921100S01	SAN JUAN 29-5 SPORR 66G	RIO ARRIBA	NM	29	N	5	W 33	A721060	12001	BASIN::DAKOTA	99	G	12/22/05		1/24/06	1/24/06
300392921100S01	SAN JUAN 29-5 SPORR 66G	RIO ARRIBA	NM	29	N	5	W 33	A721060	12001	BASIN::DAKOTA	99	G	12/22/05		1/24/06	1/24/06

PRODUCTION STATUS

- 11 - FLOWING WELL
- 41 - SHUT IN
- 59 - SOLD
- 61 - TEMP ABANDON
- 71 - PERM ABANDON ZONE
- 72 - PERM ABANDON WELL
- PA - PLUG ABANDON
- PS - PERM SHUT-IN

SAN JUAN 29-5 UNIT
STATUS OF WELLS REPORT 02/08/13

Api Well Code	Name	CTY	ST	TWN	RGE	SEC	Unit Letter	Lse ID	Oper ID	Rsvr Name	PROD STAT	COMP TYPE	COMP DATE	ABANDON DATE	INITIAL PROD DATE	FIRST SALES DATE		
300392630100S01	SAN JUAN 29-5 SPORR 66M	RIO ARRIBA	NM	29	N	5	W	33		A721060	12001	BASIN::DAKOTA	99	G	6/1/00			
300392630100S01	SAN JUAN 29-5 SPORR 66M	RIO ARRIBA	NM	29	N	5	W	33		A721060	12001	BASIN::DAKOTA	99	G	6/1/00			
300392070900S01	SAN JUAN 29-5 SPORR 67	RIO ARRIBA	NM	29	N	5	W	20		A721060	12001	BASIN::DAKOTA	99	G	9/17/73			
300392070900S01	SAN JUAN 29-5 SPORR 67	RIO ARRIBA	NM	29	N	5	W	20		A721060	12001	BASIN::DAKOTA	99	G	9/17/73			
300392974000S01	SAN JUAN 29-5 SPORR 67F	RIO ARRIBA	NM	29	N	5	W	20		A721060	12001	BASIN::DAKOTA	99	G	7/25/06	9/11/06	9/11/06	
300392974000S01	SAN JUAN 29-5 SPORR 67F	RIO ARRIBA	NM	29	N	5	W	20		A721060	12001	BASIN::DAKOTA	99	G	7/25/06	9/11/06	9/11/06	
300392582100S01	SAN JUAN 29-5 SPORR 67M	RIO ARRIBA	NM	29	N	5	W	20		A721060	12001	BASIN::DAKOTA	99	G	2/1/99			
300392582100S01	SAN JUAN 29-5 SPORR 67M	RIO ARRIBA	NM	29	N	5	W	20		A721060	12001	BASIN::DAKOTA	99	G	2/1/99			
300392071200S01	SAN JUAN 29-5 SPORR 68	RIO ARRIBA	NM	29	N	5	W	18		A721060	12001	BASIN::DAKOTA	99	G	12/12/73			
300392657700S01	SAN JUAN 29-5 SPORR 68M	RIO ARRIBA	NM	29	N	5	W	18		A721060	12001	BASIN::DAKOTA	99	G	5/23/01			
300392657700S01	SAN JUAN 29-5 SPORR 68M	RIO ARRIBA	NM	29	N	5	W	18		A721060	12001	BASIN::DAKOTA	99	G	5/23/01			
300392106500S01	SAN JUAN 29-5 SPORR 69	RIO ARRIBA	NM	29	N	5	W	21		A721060	12001	BASIN::DAKOTA	99	G	4/20/75			
300392106500S01	SAN JUAN 29-5 SPORR 69	RIO ARRIBA	NM	29	N	5	W	21		A721060	12001	BASIN::DAKOTA	99	G	4/20/75			
300392637100S01	SAN JUAN 29-5 SPORR 6A	RIO ARRIBA	NM	29	N	5	W	27		A721060	12001	BASIN::DAKOTA	99	G	6/1/00			
300392637100S01	SAN JUAN 29-5 SPORR 6A	RIO ARRIBA	NM	29	N	5	W	27		A721060	12001	BASIN::DAKOTA	99	G	6/1/00			
300392105000S01	SAN JUAN 29-5 SPORR 70	RIO ARRIBA	NM	29	N	5	W	28		A721060	12001	BASIN::DAKOTA	99	G	4/6/75			
300392966700S01	SAN JUAN 29-5 SPORR 70F	RIO ARRIBA	NM	29	N	5	W	28		A721060	12001	BASIN::DAKOTA	99	G	6/22/06	8/15/06	8/15/06	
300392966700S01	SAN JUAN 29-5 SPORR 70F	RIO ARRIBA	NM	29	N	5	W	28		A721060	12001	BASIN::DAKOTA	99	G	6/22/06	8/15/06	8/15/06	
300392965300S01	SAN JUAN 29-5 SPORR 70G	RIO ARRIBA	NM	29	N	5	W	28		A721060	12001	BASIN::DAKOTA	99	G	6/16/06	8/11/06	8/11/06	
300392965300S01	SAN JUAN 29-5 SPORR 70G	RIO ARRIBA	NM	29	N	5	W	28		A721060	12001	BASIN::DAKOTA	99	G	6/16/06	8/11/06	8/11/06	
300392629900S01	SAN JUAN 29-5 SPORR 70M	RIO ARRIBA	NM	29	N	5	W	28		A721060	12001	BASIN::DAKOTA	99	G	6/1/00			
300392629900S01	SAN JUAN 29-5 SPORR 70M	RIO ARRIBA	NM	29	N	5	W	28		A721060	12001	BASIN::DAKOTA	99	G	6/1/00			
300392105100S01	SAN JUAN 29-5 SPORR 75	RIO ARRIBA	NM	29	N	5	W	22		A721060	12001	BASIN::DAKOTA	99	G	5/24/75			
300392786200S01	SAN JUAN 29-5 SPORR 75M	RIO ARRIBA	NM	29	N	5	W	22		A721060	12001	BASIN::DAKOTA	99	G	4/28/05			
300392786200S01	SAN JUAN 29-5 SPORR 75M	RIO ARRIBA	NM	29	N	5	W	22		A721060	12001	BASIN::DAKOTA	99	G	4/28/05			
300392105500S01	SAN JUAN 29-5 SPORR 77	RIO ARRIBA	NM	29	N	5	W	26		A721060	12001	BASIN::DAKOTA	99	G	7/2/75			
300392105500S01	SAN JUAN 29-5 SPORR 77	RIO ARRIBA	NM	29	N	5	W	26		A721060	12001	BASIN::DAKOTA	99	G	7/2/75			
300392938500C02	SAN JUAN 29-5 UNIT 62M	RIO ARRIBA	NM	29	N	5	W	7		A728832	12001	BLANCO::MESAVERDE	11	G	9/27/06	11/20/06	11/20/06	
300392143700S01	SAN JUAN 29-5 UNIT 78	RIO ARRIBA	NM	29	N	5	W	6		A728833	12001	BLANCO::PICTURED CLIFFS	71	G	1/17/78	3/14/97	4/6/78	4/6/78
300392178200S01	SAN JUAN 29-5 UNIT 81	RIO ARRIBA	NM	29	N	5	W	6		A728833	12001	BLANCO::PICTURED CLIFFS	71	G	6/5/79	3/7/97	9/1/79	9/1/79
300390752400S01	SAN JUAN 29-5 UNIT NP SPO	RIO ARRIBA	NM	29	N	5	W	29		A722551	12001	BASIN::DAKOTA	99	G	9/14/59			
300390761600S01	SAN JUAN 29-5 UT 10 MV	RIO ARRIBA	NM	29	N	5	W	16	L	A650111	12001	BLANCO::MESAVERDE	11	G				
300392253400C01	SAN JUAN 29-5 UT 100 MV	RIO ARRIBA	NM	29	N	5	W	25	G	A650141	12001	BLANCO::MESAVERDE	11	G	6/15/81	6/15/81	6/15/81	
300392253400C01	SAN JUAN 29-5 UT 100 MV	RIO ARRIBA	NM	29	N	5	W	25	G	A650141	12001	BLANCO::MESAVERDE	11	G	6/15/81	6/15/81	6/15/81	
300392253400C01	SAN JUAN 29-5 UT 100 MV	RIO ARRIBA	NM	29	N	5	W	25	G	A650141	12001	BLANCO::MESAVERDE	11	G	6/15/81	6/15/81	6/15/81	
300392253400C02	SAN JUAN 29-5 UT 100 PC	RIO ARRIBA	NM	29	N	5	W	25	G	A650108	12001	GOBERNADOR:PICTURED CLIFF	11	G	6/15/81	6/15/81	6/15/81	
300392248400C01	SAN JUAN 29-5 UT 101 MV	RIO ARRIBA	NM	29	N	5	W	26	B	A650111	12001	BLANCO::MESAVERDE	11	G	6/23/81			
300392248400C02	SAN JUAN 29-5 UT 101 PC	RIO ARRIBA	NM	29	N	5	W	26	B	A650142	12001	GOBERNADOR:PICTURED CLIFF	11	G	6/30/81			
300392248400C02	SAN JUAN 29-5 UT 101 PC	RIO ARRIBA	NM	29	N	5	W	26	B	A650142	12001	GOBERNADOR:PICTURED CLIFF	11	G	6/30/81			
300392248400C02	SAN JUAN 29-5 UT 101 PC	RIO ARRIBA	NM	29	N	5	W	26	B	A650142	12001	GOBERNADOR:PICTURED CLIFF	11	G	6/30/81			
300392246800S01	SAN JUAN 29-5 UT 102 PC	RIO ARRIBA	NM	29	N	5	W	9	A	A650108	12001	GOBERNADOR:PICTURED CLIFF	11	G	6/25/81	6/25/81	6/25/81	
300392246700S01	SAN JUAN 29-5 UT 103 PC	RIO ARRIBA	NM	29	N	5	W	4	K	A650144	12001	GOBERNADOR:PICTURED CLIFF	72	G		10/31/12		
300392246700S01	SAN JUAN 29-5 UT 103 PC	RIO ARRIBA	NM	29	N	5	W	4	K	A650144	12001	GOBERNADOR:PICTURED CLIFF	72	G		10/31/12		
300392246700S01	SAN JUAN 29-5 UT 103 PC	RIO ARRIBA	NM	29	N	5	W	4	K	A650144	12001	GOBERNADOR:PICTURED CLIFF	72	G		10/31/12		
300392246900D01	SAN JUAN 29-5 UT 104 MV	RIO ARRIBA	NM	29	N	5	W	10	B	A650143	12001	BLANCO::MESAVERDE	41	G	7/27/81	7/27/81	7/27/81	
300392246900D01	SAN JUAN 29-5 UT 104 MV	RIO ARRIBA	NM	29	N	5	W	10	B	A650143	12001	BLANCO::MESAVERDE	41	G	7/27/81	7/27/81	7/27/81	
300392246900D01	SAN JUAN 29-5 UT 104 MV	RIO ARRIBA	NM	29	N	5	W	10	B	A650143	12001	BLANCO::MESAVERDE	41	G	7/27/81	7/27/81	7/27/81	
300392246900D01	SAN JUAN 29-5 UT 104 MV	RIO ARRIBA	NM	29	N	5	W	10	B	A650143	12001	BLANCO::MESAVERDE	41	G	7/27/81	7/27/81	7/27/81	
300392246900D02	SAN JUAN 29-5 UT 104 PC	RIO ARRIBA	NM	29	N	5	W	10	B	A650108	12001	GOBERNADOR:PICTURED CLIFF	11	G	7/27/81			
300392303300C01	SAN JUAN 29-5 UT 106 MV	RIO ARRIBA	NM	29	N	5	W	25	K	A650111	12001	BLANCO::MESAVERDE	11	G				

PRODUCTION STATUS

11 - FLOWING WELL 71 - PERM ABANDON ZONE
41 - SHUT IN 72 - PERM ABANDON WELL
59 - SOLD PA - PLUG ABANDON
61 - TFRM ARANDON PS - PFRM SHUT-IN

**SAN JUAN 29-5 UNIT
STATUS OF WELLS REPORT 02/08/13**

Api Well Code	Name	CTY	ST	TWN	RGE	SEC	Unit Letter	Lse ID	Oper ID	Rsvr Name	PROD STAT	COMP TYPE	COMP DATE	ABANDON DATE	INITIAL PROD DATE	FIRST SALES DATE
300392303300C02	SAN JUAN 29-5 UT 106 PC	RIO ARRIBA	NM	29	N	5	W	25	K	A650108	12001	GOBERNADOR:PICTURED CLIFF	11	G		
300392365900C01	SAN JUAN 29-5 UT 107 MV	RIO ARRIBA	NM	29	N	5	W	2	D	A650111	12001	BLANCO::MESAVERDE	11	G		
300392365900C02	SAN JUAN 29-5 UT 107 PC	RIO ARRIBA	NM	29	N	5	W	2	D	A650108	12001	GOBERNADOR:PICTURED CLIFF	11	G		
300392575200S01	SAN JUAN 29-5 UT 10A MV	RIO ARRIBA	NM	29	N	5	W	16	F	A650111	12001	BLANCO::MESAVERDE	11	G	2/11/98	2/11/98
300392771600S01	SAN JUAN 29-5 UT 10B MV	RIO ARRIBA	NM	29	N	5	W	16	M	A650111	12001	BLANCO::MESAVERDE	11	G	2/3/05	2/3/05
300392968100S01	SAN JUAN 29-5 UT 10C MV	RIO ARRIBA	NM	29	N	5	W	16	D	A650111	12001	BLANCO::MESAVERDE	11	G	10/26/06	11/20/06
300390757500S01	SAN JUAN 29-5 UT 11 MV	RIO ARRIBA	NM	29	N	5	W	19	K	A650111	12001	BLANCO::MESAVERDE	11	G		
300392155700S01	SAN JUAN 29-5 UT 11A MV	RIO ARRIBA	NM	29	N	5	W	19	D	A650111	12001	BLANCO::MESAVERDE	11	G		
300390752100S01	SAN JUAN 29-5 UT 12 MV	RIO ARRIBA	NM	29	N	5	W	30	M	A650111	12001	BLANCO::MESAVERDE	11	G		
300392155900S01	SAN JUAN 29-5 UT 12A MV	RIO ARRIBA	NM	29	N	5	W	30	D	A650111	12001	BLANCO::MESAVERDE	11	G		
300390753800S01	SAN JUAN 29-5 UT 13 MV	RIO ARRIBA	NM	29	N	5	W	30	H	A650111	12001	BLANCO::MESAVERDE	11	G		
300392156000S01	SAN JUAN 29-5 UT 13A MV	RIO ARRIBA	NM	29	N	5	W	30	I	A650111	12001	BLANCO::MESAVERDE	11	G	3/23/78	3/23/78
300392945100C01	SAN JUAN 29-5 UT 13F DK	RIO ARRIBA	NM	29	N	5	W	30		A650265	12001	BASIN::DAKOTA	11	G	6/8/06	7/25/06
300392945100C02	SAN JUAN 29-5 UT 13F MV	RIO ARRIBA	NM	29	N	5	W	30		A650111	12001	BLANCO::MESAVERDE	11	G	6/8/06	7/25/06
300392655800C01	SAN JUAN 29-5 UT 13M DK	RIO ARRIBA	NM	29	N	5	W	30	O	A650265	12001	BASIN::DAKOTA	11	G	7/2/01	7/2/01
300392655800C02	SAN JUAN 29-5 UT 13M MV	RIO ARRIBA	NM	29	N	5	W	30	O	A650111	12001	BLANCO::MESAVERDE	11	G	1/9/02	1/9/02
300390754600S01	SAN JUAN 29-5 UT 14 MV	RIO ARRIBA	NM	29	N	5	W	27	G	A650111	12001	BLANCO::MESAVERDE	11	G	5/4/56	5/4/56
300392983000C01	SAN JUAN 29-5 UT 14F DK	RIO ARRIBA	NM	29	N	5	W	27	H	A650265	12001	BASIN::DAKOTA	11	G	9/28/07	11/15/07
300392983000C02	SAN JUAN 29-5 UT 14F MV	RIO ARRIBA	NM	29	N	5	W	27	H	A650111	12001	BLANCO::MESAVERDE	11	G	9/28/07	11/15/07
300392983100C01	SAN JUAN 29-5 UT 14G DK	RIO ARRIBA	NM	29	N	5	W	27	O	A650265	12001	BASIN::DAKOTA	11	G	8/7/07	8/9/07
300392983100C02	SAN JUAN 29-5 UT 14G MV	RIO ARRIBA	NM	29	N	5	W	27	O	A650111	12001	BLANCO::MESAVERDE	11	G	8/7/07	8/9/07
300392983200C01	SAN JUAN 29-5 UT 14M DK	RIO ARRIBA	NM	29	N	5	W	27	J	A650265	12001	BASIN::DAKOTA	11	G	7/26/07	8/1/07
300392983200C02	SAN JUAN 29-5 UT 14M MV	RIO ARRIBA	NM	29	N	5	W	27	J	A650111	12001	BLANCO::MESAVERDE	11	G	7/26/07	8/1/07
300390759500S01	SAN JUAN 29-5 UT 15 MV	RIO ARRIBA	NM	29	N	5	W	20	B	A650111	12001	BLANCO::MESAVERDE	11	G		
300390756700S01	SAN JUAN 29-5 UT 16 MV	RIO ARRIBA	NM	29	N	5	W	21	M	A650111	12001	BLANCO::MESAVERDE	11	G		
300390770800S01	SAN JUAN 29-5 UT 17 MV	RIO ARRIBA	NM	29	N	5	W	5	A	A650111	12001	BLANCO::MESAVERDE	11	G		
300392133600S01	SAN JUAN 29-5 UT 17A MV	RIO ARRIBA	NM	29	N	5	W	5	P	A650111	12001	BLANCO::MESAVERDE	11	G		
300392974200S01	SAN JUAN 29-5 UT 17B MV	RIO ARRIBA	NM	29	N	5	W	5		A650111	12001	BLANCO::MESAVERDE	11	G	9/13/06	11/8/06
300392946500S01	SAN JUAN 29-5 UT 17C MV	RIO ARRIBA	NM	29	N	5	W	5	I	A650111	12001	BLANCO::MESAVERDE	11	G	7/17/06	8/31/06
300390769700S01	SAN JUAN 29-5 UT 18 MV	RIO ARRIBA	NM	29	N	5	W	5	K	A650111	12001	BLANCO::MESAVERDE	11	G		
300392133700S01	SAN JUAN 29-5 UT 18A MV	RIO ARRIBA	NM	29	N	5	W	5	F	A650111	12001	BLANCO::MESAVERDE	11	G		
300392778500S01	SAN JUAN 29-5 UT 18B MV	RIO ARRIBA	NM	29	N	5	W	5	L	A650111	12001	BLANCO::MESAVERDE	11	G	7/13/05	7/13/05
300392921800S01	SAN JUAN 29-5 UT 18C MV	RIO ARRIBA	NM	29	N	5	W	5	D	A650111	12001	BLANCO::MESAVERDE	11	G	9/26/05	9/26/05
300390770700S01	SAN JUAN 29-5 UT 19 MV	RIO ARRIBA	NM	29	N	5	W	6	B	A650111	12001	BLANCO::MESAVERDE	72	G	5/29/57	1/31/00
300392133800S01	SAN JUAN 29-5 UT 19A MV	RIO ARRIBA	NM	29	N	5	W	6	P	A650111	12001	BLANCO::MESAVERDE	11	G		
300392920300S01	SAN JUAN 29-5 UT 19B MV	RIO ARRIBA	NM	29	N	5	W	6	F	A650111	12001	BLANCO::MESAVERDE	11	G	7/21/05	7/21/05
300390764500S01	SAN JUAN 29-5 UT 20 MV	RIO ARRIBA	NM	29	N	5	W	7	M	A650111	12001	BLANCO::MESAVERDE	11	G	5/9/57	
300392497600S01	SAN JUAN 29-5 UT 201 FC	RIO ARRIBA	NM	29	N	5	W	27	K	A650259	12001	BASIN CB::FRUITLAND COAL	11	G	8/18/92	8/18/92
300392497600S01	SAN JUAN 29-5 UT 201 FC	RIO ARRIBA	NM	29	N	5	W	27	K	A650259	12001	BASIN CB::FRUITLAND COAL	11	G	8/18/92	8/18/92
300392497600S01	SAN JUAN 29-5 UT 201 FC	RIO ARRIBA	NM	29	N	5	W	27	K	A650259	12001	BASIN CB::FRUITLAND COAL	11	G	8/18/92	8/18/92
300392134100S01	SAN JUAN 29-5 UT 20A MV	RIO ARRIBA	NM	29	N	5	W	7	F	A650111	12001	BLANCO::MESAVERDE	11	G		
300392933400S01	SAN JUAN 29-5 UT 20C MV	RIO ARRIBA	NM	29	N	5	W	7	C	A650111	12001	BLANCO::MESAVERDE	11	G	7/13/06	8/25/06
300390766700S01	SAN JUAN 29-5 UT 21 MV	RIO ARRIBA	NM	29	N	5	W	8	G	A650111	12001	BLANCO::MESAVERDE	11	G		
300392460400S01	SAN JUAN 29-5 UT 213 FC	RIO ARRIBA	NM	29	N	5	W	22	M	A650407	12001	BASIN CB::FRUITLAND COAL	11	G	8/12/92	
300392493000S01	SAN JUAN 29-5 UT 214 FC	RIO ARRIBA	NM	29	N	5	W	27	G	A650219	12001	BASIN CB::FRUITLAND COAL	11	G	8/11/92	8/11/92
300392493000S01	SAN JUAN 29-5 UT 214 FC	RIO ARRIBA	NM	29	N	5	W	27	G	A650219	12001	BASIN CB::FRUITLAND COAL	11	G	8/11/92	8/11/92
300392493000S01	SAN JUAN 29-5 UT 214 FC	RIO ARRIBA	NM	29	N	5	W	27	G	A650219	12001	BASIN CB::FRUITLAND COAL	11	G	8/11/92	8/11/92
300392493000S01	SAN JUAN 29-5 UT 214 FC	RIO ARRIBA	NM	29	N	5	W	27	G	A650219	12001	BASIN CB::FRUITLAND COAL	11	G	8/11/92	8/11/92
300392473100S01	SAN JUAN 29-5 UT 216 FC	RIO ARRIBA	NM	29	N	5	W	33	L	A650174	12001	BASIN CB::FRUITLAND COAL	11	G	10/15/90	
300392473100S01	SAN JUAN 29-5 UT 216 FC	RIO ARRIBA	NM	29	N	5	W	33	L	A650174	12001	BASIN CB::FRUITLAND COAL	11	G	10/15/90	
300392473100S01	SAN JUAN 29-5 UT 216 FC	RIO ARRIBA	NM	29	N	5	W	33	L	A650174	12001	BASIN CB::FRUITLAND COAL	11	G	10/15/90	

PRODUCTION STATUS

- 11 - FLOWING WELL
- 41 - SHUT IN
- 59 - SOLD
- 61 - TEMP ABANDON
- 71 - PERM ABANDON ZONE
- 72 - PERM ABANDON WELL
- PA - PLUG ABANDON
- PS - PERM SHUT-IN

SAN JUAN 29-5 UNIT
STATUS OF WELLS REPORT 02/08/13

Api Well Code	Name	CTY	ST	TWN	RGE	SEC	Unit Letter	Lse ID	Oper ID	Rsvr Name	PROD STAT	COMP TYPE	COMP DATE	ABANDON DATE	INITIAL PROD DATE	FIRST SALES DATE
300392497700S01	SAN JUAN 29-5 UT 217 FC	RIO ARRIBA	NM	29	N	5	W 34	L	A650260	12001	BASIN::FRUITLAND COAL	11	G		3/15/96	
300392497700S01	SAN JUAN 29-5 UT 217 FC	RIO ARRIBA	NM	29	N	5	W 34	L	A650260	12001	BASIN::FRUITLAND COAL	11	G		3/15/96	
300392497700S01	SAN JUAN 29-5 UT 217 FC	RIO ARRIBA	NM	29	N	5	W 34	L	A650260	12001	BASIN::FRUITLAND COAL	11	G		3/15/96	
300392478200S01	SAN JUAN 29-5 UT 218 FC	RIO ARRIBA	NM	29	N	5	W 34	G	A650261	12001	BASIN::FRUITLAND COAL	11	G	3/15/96	3/15/96	3/15/96
300392478200S01	SAN JUAN 29-5 UT 218 FC	RIO ARRIBA	NM	29	N	5	W 34	G	A650261	12001	BASIN::FRUITLAND COAL	11	G	3/15/96	3/15/96	3/15/96
300392478200S01	SAN JUAN 29-5 UT 218 FC	RIO ARRIBA	NM	29	N	5	W 34	G	A650261	12001	BASIN::FRUITLAND COAL	11	G	3/15/96	3/15/96	3/15/96
300392478200S01	SAN JUAN 29-5 UT 218 FC	RIO ARRIBA	NM	29	N	5	W 34	G	A650261	12001	BASIN::FRUITLAND COAL	11	G	3/15/96	3/15/96	3/15/96
300392134200S01	SAN JUAN 29-5 UT 21A MV	RIO ARRIBA	NM	29	N	5	W 8	O	A650111	12001	BLANCO::MESAVERDE	11	G			
300392778400S01	SAN JUAN 29-5 UT 21B MV	RIO ARRIBA	NM	29	N	5	W 8	J	A650111	12001	BLANCO::MESAVERDE	11	G		8/24/05	8/21/05
300392955300S01	SAN JUAN 29-5 UT 21C MV	RIO ARRIBA	NM	29	N	5	W 8	B	A650111	12001	BLANCO::MESAVERDE	11	G	10/5/06	11/9/06	11/9/06
300390765900S01	SAN JUAN 29-5 UT 22 MV	RIO ARRIBA	NM	29	N	5	W 8	L	A650111	12001	BLANCO::MESAVERDE	11	G			
300392490900S01	SAN JUAN 29-5 UT 223 FC	RIO ARRIBA	NM	29	N	5	W 33	G	A650407	12001	BASIN CB::FRUITLAND COAL	11	G		8/19/92	
300392522700S01	SAN JUAN 29-5 UT 229 POW	RIO ARRIBA	NM	29	N	5	W 7	A	A650372	12001	BASIN CB::FRUITLAND COAL	72	S	10/5/92	7/8/08	12/20/93
300392134300S01	SAN JUAN 29-5 UT 22A MV	RIO ARRIBA	NM	29	N	5	W 8	F	A650111	12001	BLANCO::MESAVERDE	11	G			
300392946800S01	SAN JUAN 29-5 UT 22B MV	RIO ARRIBA	NM	29	N	5	W 8	D	A650111	12001	BLANCO::MESAVERDE	11	G	7/31/06	8/31/06	8/31/06
300392946400S01	SAN JUAN 29-5 UT 22C MV	RIO ARRIBA	NM	29	N	5	W 8	A	A650111	12001	BLANCO::MESAVERDE	11	G	8/8/06	9/12/06	9/12/06
300398238500S01	SAN JUAN 29-5 UT 23 MV	RIO ARRIBA	NM	29	N	5	W 16	H	A650111	12001	BLANCO::MESAVERDE	11	G			
300393087900C02	SAN JUAN 29-5 UT 235 FTC	RIO ARRIBA	NM	29	N	5	W 15	L	A714456	12001	BASIN::FRUITLAND COAL	11	G	11/10/10	11/17/10	11/17/10
300393087900C01	SAN JUAN 29-5 UT 235 PC	RIO ARRIBA	NM	29	N	5	W 15	L	A714457	12001	GOBERNADOR:PICTURED CLIFF	11	G	11/10/10	11/17/10	11/17/10
300392575300S01	SAN JUAN 29-5 UT 23A MV	RIO ARRIBA	NM	29	N	5	W 16	J	A650111	12001	BLANCO::MESAVERDE	11	G		2/11/98	2/11/98
300393004700S01	SAN JUAN 29-5 UT 23B DK	RIO ARRIBA	NM	29	N	5	W 16	B	A711241	12001	BASIN::DAKOTA	71	G	12/10/08	1/7/09	
300393004700S02	SAN JUAN 29-5 UT 23B MV	RIO ARRIBA	NM	29	N	5	W 16	B	A650111	12001	BLANCO::MESAVERDE	11	G	1/1/09	1/26/09	1/26/09
300392964600S01	SAN JUAN 29-5 UT 23C MV	RIO ARRIBA	NM	29	N	5	W 16	O	A650111	12001	BLANCO::MESAVERDE	11	G	11/10/06	12/7/06	12/7/06
300390763700C02	SAN JUAN 29-5 UT 24 FC	RIO ARRIBA	NM	29	N	5	W 17	B	A708894	12001	BASIN CB::FRUITLAND COAL	11	G			
300390763700C02	SAN JUAN 29-5 UT 24 FC	RIO ARRIBA	NM	29	N	5	W 17	B	A708894	12001	BASIN CB::FRUITLAND COAL	11	G			
300390763700C01	SAN JUAN 29-5 UT 24 MV	RIO ARRIBA	NM	29	N	5	W 17	B	A650111	12001	BLANCO::MESAVERDE	11	G			
300392691000S01	SAN JUAN 29-5 UT 24A MV	RIO ARRIBA	NM	29	N	5	W 17	H	A650111	12001	BLANCO::MESAVERDE	11	G		8/18/04	8/18/04
300390762500C02	SAN JUAN 29-5 UT 25 FC	RIO ARRIBA	NM	29	N	5	W 18	G	A708913	12001	LOS PINOS N:FRUITLAND	11	G		6/9/04	6/9/04
300390762500C02	SAN JUAN 29-5 UT 25 FC	RIO ARRIBA	NM	29	N	5	W 18	G	A708913	12001	LOS PINOS N:FRUITLAND	11	G		6/9/04	6/9/04
300390762500C01	SAN JUAN 29-5 UT 25 MV	RIO ARRIBA	NM	29	N	5	W 18	G	A650111	12001	BLANCO::MESAVERDE	11	G		3/18/05	3/18/05
300392155600S01	SAN JUAN 29-5 UT 25A MV	RIO ARRIBA	NM	29	N	5	W 18	O	A650111	12001	BLANCO::MESAVERDE	11	G			
300392945000S01	SAN JUAN 29-5 UT 25B MV	RIO ARRIBA	NM	29	N	5	W 18	H	A650111	12001	BLANCO::MESAVERDE	11	G	8/17/06	9/13/06	9/13/06
300390761400S02	SAN JUAN 29-5 UT 26 FC	RIO ARRIBA	NM	29	N	5	W 18	K	A717075	12001	BASIN CB::FRUITLAND COAL	11	G	11/15/06	1/4/07	1/4/07
300390761400S02	SAN JUAN 29-5 UT 26 FC	RIO ARRIBA	NM	29	N	5	W 18	K	A717075	12001	BASIN CB::FRUITLAND COAL	11	G	11/15/06	1/4/07	1/4/07
300390761400S02	SAN JUAN 29-5 UT 26 FC	RIO ARRIBA	NM	29	N	5	W 18	K	A717075	12001	BASIN CB::FRUITLAND COAL	11	G	11/15/06	1/4/07	1/4/07
300390761400S01	SAN JUAN 29-5 UT 26 MV	RIO ARRIBA	NM	29	N	5	W 18	K	A650111	12001	BLANCO::MESAVERDE	61	G	4/26/58		
300392155500C02	SAN JUAN 29-5 UT 26A FC	RIO ARRIBA	NM	29	N	5	W 18	D	A650407	12001	BASIN CB::FRUITLAND COAL	11	G			
300392155500C02	SAN JUAN 29-5 UT 26A FC	RIO ARRIBA	NM	29	N	5	W 18	D	A650407	12001	BASIN CB::FRUITLAND COAL	11	G			
300392155500C01	SAN JUAN 29-5 UT 26A MV	RIO ARRIBA	NM	29	N	5	W 18	D	A650111	12001	BLANCO::MESAVERDE	11	G			
300390759700S01	SAN JUAN 29-5 UT 27 MV	RIO ARRIBA	NM	29	N	5	W 19	B	A650111	12001	BLANCO::MESAVERDE	11	G			
300392155800S01	SAN JUAN 29-5 UT 27A MV	RIO ARRIBA	NM	29	N	5	W 19	I	A650111	12001	BLANCO::MESAVERDE	11	G			
300390756300S01	SAN JUAN 29-5 UT 28 MV	RIO ARRIBA	NM	29	N	5	W 20	M	A650111	12001	BLANCO::MESAVERDE	11	G			
300390753200S01	SAN JUAN 29-5 UT 30 MV	RIO ARRIBA	NM	29	N	5	W 28	L	A650111	12001	BLANCO::MESAVERDE	11	G	6/30/57	6/30/57	6/30/57
300390754500S01	SAN JUAN 29-5 UT 31 MV	RIO ARRIBA	NM	29	N	5	W 29	H	A650111	12001	BLANCO::MESAVERDE	11	G			
300390752400C01	SAN JUAN 29-5 UT 32 DK	RIO ARRIBA	NM	29	N	5	W 29	N	A650265	12001	BASIN::DAKOTA	11	G			
300390752400C01	SAN JUAN 29-5 UT 32 DK	RIO ARRIBA	NM	29	N	5	W 29	N	A650265	12001	BASIN::DAKOTA	11	G			
300390752400C02	SAN JUAN 29-5 UT 32 MV	RIO ARRIBA	NM	29	N	5	W 29	N	A650111	12001	BLANCO::MESAVERDE	11	G			
300392753800C01	SAN JUAN 29-5 UT 32F DK	RIO ARRIBA	NM	29	N	5	W 29	F	A650265	12001	BASIN::DAKOTA	11	G		6/24/05	6/24/05
300392753800C01	SAN JUAN 29-5 UT 32F DK	RIO ARRIBA	NM	29	N	5	W 29	F	A650265	12001	BASIN::DAKOTA	11	G		6/24/05	6/24/05
300392753800C02	SAN JUAN 29-5 UT 32F MV	RIO ARRIBA	NM	29	N	5	W 29	F	A650111	12001	BLANCO::MESAVERDE	11	G		6/24/05	6/24/05

PRODUCTION STATUS

11 - FLOWING WELL 71 - PERM ABANDON ZONE
41 - SHUT IN 72 - PERM ABANDON WELL
59 - SOLD PA - PLUG ABANDON
61 - TFMP ARANDON PS - PFRM SHUT-IN

**SAN JUAN 29-5 UNIT
STATUS OF WELLS REPORT 02/08/13**

Api Well Code	Name	CTY	ST	TWN	RGE	SEC	Unit Letter	Lse ID	Oper ID	Rsvr Name	PROD STAT	COMP TYPE	COMP DATE	ABANDON DATE	INITIAL PROD DATE	FIRST SALES DATE
300392753700C01	SAN JUAN 29-5 UT 32G DK	RIO ARRIBA	NM	29	N	5	W 29	L	A650265	12001	BASIN::DAKOTA	11	G		7/28/05	7/28/05
300392753700C01	SAN JUAN 29-5 UT 32G DK	RIO ARRIBA	NM	29	N	5	W 29	L	A650265	12001	BASIN::DAKOTA	11	G		7/28/05	7/28/05
300392753700C02	SAN JUAN 29-5 UT 32G MV	RIO ARRIBA	NM	29	N	5	W 29	L	A650111	12001	BLANCO::MESAVERDE	11	G		7/28/05	7/28/05
300392581700C01	SAN JUAN 29-5 UT 32M DK	RIO ARRIBA	NM	29	N	5	W 29	D	A650265	12001	BASIN::DAKOTA	11	G		2/23/99	2/23/99
300392581700C01	SAN JUAN 29-5 UT 32M DK	RIO ARRIBA	NM	29	N	5	W 29	D	A650265	12001	BASIN::DAKOTA	11	G		2/23/99	2/23/99
300392581700C02	SAN JUAN 29-5 UT 32M MV	RIO ARRIBA	NM	29	N	5	W 29	D	A650111	12001	BLANCO::MESAVERDE	11	G	11/4/99	12/15/99	12/15/99
300390751500S01	SAN JUAN 29-5 UT 34 MV	RIO ARRIBA	NM	29	N	5	W 34	G	A650111	12001	BLANCO::MESAVERDE	11	G	9/29/56		9/29/56
300393016200S01	SAN JUAN 29-5 UT 34M DK	RIO ARRIBA	NM	29	N	5	W 34	O	A650265	12001	BASIN::DAKOTA	71	G	1/10/08	1/3/08	
300393016200S02	SAN JUAN 29-5 UT 34M MV	RIO ARRIBA	NM	29	N	5	W 34	O	A650111	12001	BLANCO::MESAVERDE	11	G	1/10/08		3/13/08
300392178800S01	SAN JUAN 29-5 UT 34R DK	RIO ARRIBA	NM	29	N	5	W 34	G	A650265	12001	BASIN::DAKOTA	61	G	1/4/96		
300392178800S02	SAN JUAN 29-5 UT 34R MV	RIO ARRIBA	NM	29	N	5	W 34	G	A650111	12001	BLANCO::MESAVERDE	11	G			2/16/96
300390748500S01	SAN JUAN 29-5 UT 35 MV	RIO ARRIBA	NM	29	N	5	W 34	L	A650111	12001	BLANCO::MESAVERDE	11	G			
300393020700C01	SAN JUAN 29-5 UT 35F DK	RIO ARRIBA	NM	29	N	5	W 34	F	A650265	12001	BASIN::DAKOTA	71	G	8/17/07	1/26/09	9/4/07
300393020700S02	SAN JUAN 29-5 UT 35F MV	RIO ARRIBA	NM	29	N	5	W 34	F	A650111	12001	BLANCO::MESAVERDE	11	G	8/17/07		9/4/07
300393015500C01	SAN JUAN 29-5 UT 35M DK	RIO ARRIBA	NM	29	N	5	W 34	D	A650265	12001	BASIN::DAKOTA	71	G	8/31/07	3/31/08	9/19/07
300393015500S02	SAN JUAN 29-5 UT 35M MV	RIO ARRIBA	NM	29	N	5	W 34	D	A650111	12001	BLANCO::MESAVERDE	11	G	8/31/07		9/19/07
300392178900S01	SAN JUAN 29-5 UT 35R DK	RIO ARRIBA	NM	29	N	5	W 34	K	A650265	12001	BASIN::DAKOTA	61	G	1/11/96		
300392178900S02	SAN JUAN 29-5 UT 35R MV	RIO ARRIBA	NM	29	N	5	W 34	K	A650111	12001	BLANCO::MESAVERDE	11	G			2/15/96
300390748600S01	SAN JUAN 29-5 UT 36 MV	RIO ARRIBA	NM	29	N	5	W 33	L	A650111	12001	BLANCO::MESAVERDE	11	G			
300390748300S01	SAN JUAN 29-5 UT 37 MV	RIO ARRIBA	NM	29	N	5	W 31	L	A650111	12001	BLANCO::MESAVERDE	11	G			
300392267100S01	SAN JUAN 29-5 UT 37A MV	RIO ARRIBA	NM	29	N	5	W 31	E	A650111	12001	BLANCO::MESAVERDE	11	G			
300390747200S01	SAN JUAN 29-5 UT 38 MV	RIO ARRIBA	NM	29	N	5	W 32	M	A650111	12001	BLANCO::MESAVERDE	11	G			
300390757000S01	SAN JUAN 29-5 UT 39 MV	RIO ARRIBA	NM	29	N	5	W 23	M	A650111	12001	BLANCO::MESAVERDE	11	G	10/1/58		10/1/58
300392987500S01	SAN JUAN 29-5 UT 39A MV	RIO ARRIBA	NM	29	N	5	W 23	E	A650111	12001	BLANCO::MESAVERDE	11	G	10/4/07		12/12/07
300390769600S01	SAN JUAN 29-5 UT 4 MV	RIO ARRIBA	NM	29	N	5	W 6	L	A650111	12001	BLANCO::MESAVERDE	11	G	2/22/54		
300390754300S01	SAN JUAN 29-5 UT 40 MV	RIO ARRIBA	NM	29	N	5	W 28	G	A650111	12001	BLANCO::MESAVERDE	11	G			
300390750600S01	SAN JUAN 29-5 UT 41 MV	RIO ARRIBA	NM	29	N	5	W 31	A	A650111	12001	BLANCO::MESAVERDE	11	G			
300392270300S01	SAN JUAN 29-5 UT 41A MV	RIO ARRIBA	NM	29	N	5	W 31	O	A650111	12001	BLANCO::MESAVERDE	11	G			
300390749800S01	SAN JUAN 29-5 UT 42 MV	RIO ARRIBA	NM	29	N	5	W 32	H	A650111	12001	BLANCO::MESAVERDE	11	G	7/29/58		7/29/58
300390756600S01	SAN JUAN 29-5 UT 43 MV	RIO ARRIBA	NM	29	N	5	W 22	M	A650111	12001	BLANCO::MESAVERDE	11	G			
300390759600C01	SAN JUAN 29-5 UT 45 MV	RIO ARRIBA	NM	29	N	5	W 22	A	A650111	12001	BLANCO::MESAVERDE	11	G			
300390759600C02	SAN JUAN 29-5 UT 45 PC	RIO ARRIBA	NM	29	N	5	W 22	A	A650108	12001	GOBERNADOR:PICTURED CLIFF	11	G		3/8/00	3/8/00
300390759600C02	SAN JUAN 29-5 UT 45 PC	RIO ARRIBA	NM	29	N	5	W 22	A	A650108	12001	GOBERNADOR:PICTURED CLIFF	11	G		3/8/00	3/8/00
300392981700S01	SAN JUAN 29-5 UT 45A MV	RIO ARRIBA	NM	29	N	5	W 22	I	A650111	12001	BLANCO::MESAVERDE	11	G	9/22/06		12/21/06
300392786300S01	SAN JUAN 29-5 UT 45F MV	RIO ARRIBA	NM	29	N	5	W 22	J	A650111	12001	BLANCO::MESAVERDE	11	G	9/30/05		10/26/05
300392786900S01	SAN JUAN 29-5 UT 45M MV	RIO ARRIBA	NM	29	N	5	W 22	G	A650111	12001	BLANCO::MESAVERDE	11	G		10/20/05	10/20/05
300390759900S01	SAN JUAN 29-5 UT 46 MV	RIO ARRIBA	NM	29	N	5	W 21	B	A650111	12001	BLANCO::MESAVERDE	11	G			
300398238400S01	SAN JUAN 29-5 UT 47 MV	RIO ARRIBA	NM	29	N	5	W 4	L	A650111	12001	BLANCO::MESAVERDE	11	G	10/10/60		
300392272600D01	SAN JUAN 29-5 UT 47A MV	RIO ARRIBA	NM	29	N	5	W 4	C	A650111	12001	BLANCO::MESAVERDE	11	G	8/28/81		8/28/81
300392272600D02	SAN JUAN 29-5 UT 47A PC	RIO ARRIBA	NM	29	N	5	W 4	C	A650108	12001	GOBERNADOR:PICTURED CLIFF	11	G	8/28/81		8/28/81
300390761800S01	SAN JUAN 29-5 UT 48 MV	RIO ARRIBA	NM	29	N	5	W 15	L	A650111	12001	BLANCO::MESAVERDE	11	G	1/1/97		
300392989600S01	SAN JUAN 29-5 UT 48A MV	RIO ARRIBA	NM	29	N	5	W 15	D	A650111	12001	BLANCO::MESAVERDE	11	G	11/21/06		12/18/06
300393029000S01	SAN JUAN 29-5 UT 48B MV	RIO ARRIBA	NM	29	N	5	W 15	K	A650111	12001	BLANCO::MESAVERDE	11	G	9/5/07		10/26/07
300392969300S01	SAN JUAN 29-5 UT 48C MV	RIO ARRIBA	NM	29	N	5	W 15	C	A650111	12001	BLANCO::MESAVERDE	11	G	9/9/06		12/18/06
300390764700S01	SAN JUAN 29-5 UT 49 MV	RIO ARRIBA	NM	29	N	5	W 9	M	A650111	12001	BLANCO::MESAVERDE	11	G			
300392654200C01	SAN JUAN 29-5 UT 49A MV	RIO ARRIBA	NM	29	N	5	W 9	F	A650111	12001	BLANCO::MESAVERDE	11	G		2/16/01	2/16/01
300392654200C02	SAN JUAN 29-5 UT 49A PC	RIO ARRIBA	NM	29	N	5	W 9	F	A650108	12001	BLANCO::PICTURED CLIFFS	11	G		12/17/01	12/17/01
300392654200C02	SAN JUAN 29-5 UT 49A PC	RIO ARRIBA	NM	29	N	5	W 9	F	A650108	12001	BLANCO::PICTURED CLIFFS	11	G		12/17/01	12/17/01
300392654200C02	SAN JUAN 29-5 UT 49A PC	RIO ARRIBA	NM	29	N	5	W 9	F	A650108	12001	BLANCO::PICTURED CLIFFS	11	G		12/17/01	12/17/01
300392992900S01	SAN JUAN 29-5 UT 49B MV	RIO ARRIBA	NM	29	N	5	W 9	L	A650111	12001	BLANCO::MESAVERDE	11	G	10/10/07		11/14/07

PRODUCTION STATUS

11 - FLOWING WELL 71 - PERM ABANDON ZONE
41 - SHUT IN 72 - PERM ABANDON WELL
59 - SOLD PA - PLUG ABANDON
61 - TEMP ABANDON PS - PERM SHUT-IN

SAN JUAN 29-5 UNIT
STATUS OF WELLS REPORT 02/08/13

Api Well Code	Name	CTY	ST	TWN	RGE	SEC	Unit Letter	Lse ID	Oper ID	Rsvr Name	PROD STAT	COMP TYPE	COMP DATE	ABANDON DATE	INITIAL PROD DATE	FIRST SALES DATE
300392133900S01	SAN JUAN 29-5 UT 4A MV	RIO ARRIBA	NM	29	N	5	W 6	C	A650111	12001	BLANCO::MESAVERDE	11	G			
300392935200S01	SAN JUAN 29-5 UT 4B MV	RIO ARRIBA	NM	29	N	5	W 6	K	A650111	12001	BLANCO::MESAVERDE	11	G	6/30/06	8/22/06	8/22/06
300392935100S01	SAN JUAN 29-5 UT 4C MV	RIO ARRIBA	NM	29	N	5	W 6	F	A650111	12001	BLANCO::MESAVERDE	11	G	6/23/06	8/22/06	8/22/06
300392029600S01	SAN JUAN 29-5 UT 51 DK	RIO ARRIBA	NM	29	N	5	W 19	M	A650265	12001	BASIN::DAKOTA	61	G			
300392971200C01	SAN JUAN 29-5 UT 51F DK	RIO ARRIBA	NM	29	N	5	W 19		A650265	12001	BASIN::DAKOTA	11	G	4/7/06	5/1/06	5/1/06
300392971200C02	SAN JUAN 29-5 UT 51F MV	RIO ARRIBA	NM	29	N	5	W 19		A650111	12001	BLANCO::MESAVERDE	11	G	4/4/06	5/1/06	5/1/06
300392656200C01	SAN JUAN 29-5 UT 51M DK	RIO ARRIBA	NM	29	N	5	W 19	C	A650265	12001	BASIN::DAKOTA	11	G		7/27/01	7/27/01
300392656200C02	SAN JUAN 29-5 UT 51M MV	RIO ARRIBA	NM	29	N	5	W 19	C	A650111	12001	BLANCO::MESAVERDE	11	G		11/27/01	11/27/01
300392035400S01	SAN JUAN 29-5 UT 52 DK	RIO ARRIBA	NM	29	N	5	W 29	G	A650265	12001	BASIN::DAKOTA	11	G			
300393015600S01	SAN JUAN 29-5 UT 52F DK	RIO ARRIBA	NM	29	N	5	W 29	J	A650265	12001	BASIN::DAKOTA	71	G	6/4/07	11/20/07	
300393015600S02	SAN JUAN 29-5 UT 52F MV	RIO ARRIBA	NM	29	N	5	W 29	J	A650111	12001	BLANCO::MESAVERDE	11	G	6/4/07	12/17/07	12/17/07
300392933300C01	SAN JUAN 29-5 UT 52G DK	RIO ARRIBA	NM	29	N	5	W 29	B	A650265	12001	BASIN::DAKOTA	11	G	1/17/06	1/31/06	1/31/06
300392933300C02	SAN JUAN 29-5 UT 52G MV	RIO ARRIBA	NM	29	N	5	W 29	B	A650111	12001	BLANCO::MESAVERDE	11	G	1/17/06	1/31/06	1/31/06
300392631000C01	SAN JUAN 29-5 UT 52M DK	RIO ARRIBA	NM	29	N	5	W 29	I	A650265	12001	BASIN::DAKOTA	11	G		6/14/00	6/14/00
300392631000C02	SAN JUAN 29-5 UT 52M MV	RIO ARRIBA	NM	29	N	5	W 29	I	A650111	12001	BLANCO::MESAVERDE	11	G		11/22/00	11/22/00
300392035600C01	SAN JUAN 29-5 UT 53 DK	RIO ARRIBA	NM	29	N	5	W 32	L	A650265	12001	BASIN::DAKOTA	11	G			
300392035600C02	SAN JUAN 29-5 UT 53 MV	RIO ARRIBA	NM	29	N	5	W 32	L	A650111	12001	BLANCO::MESAVERDE	11	G		7/12/02	7/12/02
300392920700C01	SAN JUAN 29-5 UT 53F DK	RIO ARRIBA	NM	29	N	5	W 32	I	A650265	12001	BASIN::DAKOTA	11	G		7/21/05	7/21/05
300392920700C02	SAN JUAN 29-5 UT 53F MV	RIO ARRIBA	NM	29	N	5	W 32	I	A650111	12001	BLANCO::MESAVERDE	11	G		7/21/05	7/21/05
300392548100C01	SAN JUAN 29-5 UT 53M DK	RIO ARRIBA	NM	29	N	5	W 32	O	A650265	12001	BASIN::DAKOTA	11	G		11/27/95	11/27/95
300392548100C02	SAN JUAN 29-5 UT 53M MV	RIO ARRIBA	NM	29	N	5	W 32	O	A650111	12001	BLANCO::MESAVERDE	11	G		11/27/95	11/27/95
300392037000C01	SAN JUAN 29-5 UT 54 DK	RIO ARRIBA	NM	29	N	5	W 31	N	A650265	12001	BASIN::DAKOTA	11	G			
300392037000C02	SAN JUAN 29-5 UT 54 MV	RIO ARRIBA	NM	29	N	5	W 31	N	A650111	12001	BLANCO::MESAVERDE	11	G		4/9/01	4/9/01
300392658200C01	SAN JUAN 29-5 UT 54M DK	RIO ARRIBA	NM	29	N	5	W 31	C	A650265	12001	BASIN::DAKOTA	11	G		3/6/02	3/6/02
300392658200C02	SAN JUAN 29-5 UT 54M MV	RIO ARRIBA	NM	29	N	5	W 31	C	A650111	12001	BLANCO::MESAVERDE	11	G		8/14/02	8/14/02
300392045800C01	SAN JUAN 29-5 UT 55 DK	RIO ARRIBA	NM	29	N	5	W 18	M	A650265	12001	BASIN::DAKOTA	11	G	4/5/72	4/5/72	4/5/72
300392045800C02	SAN JUAN 29-5 UT 55 MV	RIO ARRIBA	NM	29	N	5	W 18	M	A650111	12001	BLANCO::MESAVERDE	11	G	8/21/97	9/17/97	9/17/97
300392933500C01	SAN JUAN 29-5 UT 55F DK	RIO ARRIBA	NM	29	N	5	W 18	L	A650265	12001	BASIN::DAKOTA	11	G	6/19/06	7/21/06	7/21/06
300392933500C02	SAN JUAN 29-5 UT 55F MV	RIO ARRIBA	NM	29	N	5	W 18	L	A650111	12001	BLANCO::MESAVERDE	11	G	6/19/06	7/21/06	7/21/06
300392656400C01	SAN JUAN 29-5 UT 55M DK	RIO ARRIBA	NM	29	N	5	W 18	C	A650265	12001	BASIN::DAKOTA	11	G		5/22/01	5/22/01
300392656400C02	SAN JUAN 29-5 UT 55M MV	RIO ARRIBA	NM	29	N	5	W 18	C	A650111	12001	BLANCO::MESAVERDE	11	G		10/17/01	10/17/01
300392044900C01	SAN JUAN 29-5 UT 56 DK	RIO ARRIBA	NM	29	N	5	W 19	G	A650265	12001	BASIN::DAKOTA	11	G			
300392044900C02	SAN JUAN 29-5 UT 56 MV	RIO ARRIBA	NM	29	N	5	W 19	G	A650111	12001	BLANCO::MESAVERDE	11	G		4/1/01	4/1/01
300392658300C01	SAN JUAN 29-5 UT 56M DK	RIO ARRIBA	NM	29	N	5	W 19	J	A650265	12001	BASIN::DAKOTA	11	G		6/12/01	6/12/01
300392658300C02	SAN JUAN 29-5 UT 56M MV	RIO ARRIBA	NM	29	N	5	W 19	J	A650111	12001	BLANCO::MESAVERDE	11	G		10/19/01	10/19/01
300392045000S01	SAN JUAN 29-5 UT 57 DK	RIO ARRIBA	NM	29	N	5	W 20	M	A650265	12001	BASIN::DAKOTA	11	G			
300392972300C01	SAN JUAN 29-5 UT 57F DK	RIO ARRIBA	NM	29	N	5	W 20		A650265	12001	BASIN::DAKOTA	11	G	7/1/06	9/1/06	9/1/06
300392972300C02	SAN JUAN 29-5 UT 57F MV	RIO ARRIBA	NM	29	N	5	W 20		A650111	12001	BLANCO::MESAVERDE	11	G	7/1/06	9/1/06	9/1/06
300392933600C01	SAN JUAN 29-5 UT 57G DK	RIO ARRIBA	NM	29	N	5	W 20	L	A650265	12001	BASIN::DAKOTA	11	G	1/16/06	1/30/06	1/30/06
300392933600C02	SAN JUAN 29-5 UT 57G MV	RIO ARRIBA	NM	29	N	5	W 20	L	A650111	12001	BLANCO::MESAVERDE	11	G	1/16/06	1/30/06	1/30/06
300392583300C01	SAN JUAN 29-5 UT 57M DK	RIO ARRIBA	NM	29	N	5	W 20	P	A650265	12001	BASIN::DAKOTA	11	G		1/15/99	1/15/99
300392583300C02	SAN JUAN 29-5 UT 57M MV	RIO ARRIBA	NM	29	N	5	W 20	P	A650111	12001	BLANCO::MESAVERDE	11	G		10/18/99	10/18/99
300392045900C01	SAN JUAN 29-5 UT 58 DK	RIO ARRIBA	NM	29	N	5	W 30	N	A650265	12001	BASIN::DAKOTA	11	G			
300392045900C02	SAN JUAN 29-5 UT 58 MV	RIO ARRIBA	NM	29	N	5	W 30	N	A650111	12001	BLANCO::MESAVERDE	11	G		4/1/02	4/1/02
300392658000C01	SAN JUAN 29-5 UT 58M DK	RIO ARRIBA	NM	29	N	5	W 30	F	A650265	12001	BASIN::DAKOTA	11	G		7/12/01	7/12/01
300392658000C02	SAN JUAN 29-5 UT 58M MV	RIO ARRIBA	NM	29	N	5	W 30	F	A650111	12001	BLANCO::MESAVERDE	11	G		11/27/01	11/27/01
300392044800C01	SAN JUAN 29-5 UT 58 DK	RIO ARRIBA	NM	29	N	5	W 31	H	A650265	12001	BASIN::DAKOTA	11	G			
300392044800C02	SAN JUAN 29-5 UT 58 MV	RIO ARRIBA	NM	29	N	5	W 31	H	A650111	12001	BLANCO::MESAVERDE	11	G		7/3/02	7/3/02
300392658100C01	SAN JUAN 29-5 UT 59M DK	RIO ARRIBA	NM	29	N	5	W 31	I	A650265	12001	BASIN::DAKOTA	11	G		4/30/02	4/30/02
300392658100C02	SAN JUAN 29-5 UT 59M MV	RIO ARRIBA	NM	29	N	5	W 31	I	A650111	12001	BLANCO::MESAVERDE	11	G		8/15/02	8/15/02

PRODUCTION STATUS

- 11 - FLOWING WELL 71 - PERM ABANDON ZONE
- 41 - SHUT IN 72 - PERM ABANDON WELL
- 59 - SOLD PA - PLUG ABANDON
- 61 - TFMP ARANDON PS - PERM SHUT-IN

**SAN JUAN 29-5 UNIT
STATUS OF WELLS REPORT 02/08/13**

Api Well Code	Name	CTY	ST	TWN	RGE	SEC	Unit Letter	Lse ID	Oper ID	Rsvr Name	PROD STAT	COMP TYPE	COMP DATE	ABANDON DATE	INITIAL PROD DATE	FIRST SALES DATE
30039278600C01	SAN JUAN 29-5 UT 5F DK	RIO ARRIBA	NM	29	N	5	W 33	P A650265	12001	BASIN::DAKOTA	61	G	6/17/05		6/17/05	6/17/05
30039278600C02	SAN JUAN 29-5 UT 5F MV	RIO ARRIBA	NM	29	N	5	W 33	P A650111	12001	BLANCO::MESAVERDE	11	G			6/17/05	6/17/05
300393008100C01	SAN JUAN 29-5 UT 5G DK	RIO ARRIBA	NM	29	N	5	W 33	H A650265	12001	BASIN::DAKOTA	11	G	3/31/07		4/18/07	4/18/07
300393008100C02	SAN JUAN 29-5 UT 5G MV	RIO ARRIBA	NM	29	N	5	W 33	H A650111	12001	BLANCO::MESAVERDE	11	G	3/31/07		4/18/07	4/18/07
300392786600C01	SAN JUAN 29-5 UT 5M DK	RIO ARRIBA	NM	29	N	5	W 33	J A650265	12001	BASIN::DAKOTA	11	G			10/5/05	10/5/05
300392786600C02	SAN JUAN 29-5 UT 5M MV	RIO ARRIBA	NM	29	N	5	W 33	J A650111	12001	BLANCO::MESAVERDE	11	G			10/5/05	10/5/05
300390750700S01	SAN JUAN 29-5 UT 5X MV	RIO ARRIBA	NM	29	N	5	W 33	A A650111	12001	BLANCO::MESAVERDE	11	G				
300390753100S01	SAN JUAN 29-5 UT 6 MV	RIO ARRIBA	NM	29	N	5	W 27	K A650111	12001	BLANCO::MESAVERDE	11	G				
300392045600S01	SAN JUAN 29-5 UT 60 DK	RIO ARRIBA	NM	29	N	5	W 32	A A650265	12001	BASIN::DAKOTA	11	G				
300392927500C01	SAN JUAN 29-5 UT 60F DK	RIO ARRIBA	NM	29	N	5	W 32	B A650265	12001	BASIN::DAKOTA	11	G			12/19/05	12/19/05
300392927500C02	SAN JUAN 29-5 UT 60F MV	RIO ARRIBA	NM	29	N	5	W 32	B A650111	12001	BLANCO::MESAVERDE	11	G			12/19/05	12/19/05
300392927400C01	SAN JUAN 29-5 UT 60G DK	RIO ARRIBA	NM	29	N	5	W 32	F A650265	12001	BASIN::DAKOTA	11	G			12/19/05	12/19/05
300392927400C02	SAN JUAN 29-5 UT 60G MV	RIO ARRIBA	NM	29	N	5	W 32	F A650111	12001	BLANCO::MESAVERDE	11	G			12/19/05	12/19/05
30039263000C01	SAN JUAN 29-5 UT 60M DK	RIO ARRIBA	NM	29	N	5	W 32	D A650265	12001	BASIN::DAKOTA	11	G			6/2/00	6/2/00
30039263000C02	SAN JUAN 29-5 UT 60M MV	RIO ARRIBA	NM	29	N	5	W 32	D A650111	12001	BLANCO::MESAVERDE	11	G			11/13/00	11/13/00
300392102800C02	SAN JUAN 29-5 UT 61 FC	RIO ARRIBA	NM	29	N	5	W 9	H A650407	12001	BASIN::FRUITLAND COAL	11	G	10/11/02		10/11/02	10/11/02
300392102800C02	SAN JUAN 29-5 UT 61 FC	RIO ARRIBA	NM	29	N	5	W 9	H A650407	12001	BASIN::FRUITLAND COAL	11	G	10/11/02		10/11/02	10/11/02
300392102800C02	SAN JUAN 29-5 UT 61 FC	RIO ARRIBA	NM	29	N	5	W 9	H A650407	12001	BASIN::FRUITLAND COAL	11	G	10/11/02		10/11/02	10/11/02
300392102800C01	SAN JUAN 29-5 UT 61 MV	RIO ARRIBA	NM	29	N	5	W 9	H A650111	12001	BLANCO::MESAVERDE	11	G	3/11/75		3/11/75	3/11/75
300392975900S01	SAN JUAN 29-5 UT 61A MV	RIO ARRIBA	NM	29	N	5	W 9	O A650111	12001	BLANCO::MESAVERDE	11	G	10/19/06		11/11/06	11/11/06
300393025400S01	SAN JUAN 29-5 UT 61B MV	RIO ARRIBA	NM	29	N	5	W 9	G A650111	12001	BASIN::MESAVERDE	11	G	10/15/07		11/14/07	11/14/07
300392062500S01	SAN JUAN 29-5 UT 62 DK	RIO ARRIBA	NM	29	N	5	W 7	M A650265	12001	BASIN::DAKOTA	11	G				
300392927300C01	SAN JUAN 29-5 UT 62F DK	RIO ARRIBA	NM	29	N	5	W 7	K A650265	12001	BASIN::DAKOTA	11	G			12/20/05	12/20/05
300392927300C02	SAN JUAN 29-5 UT 62F MV	RIO ARRIBA	NM	29	N	5	W 7	K A650111	12001	BLANCO::MESAVERDE	11	G			12/20/05	12/20/05
300392938500C01	SAN JUAN 29-5 UT 62M DK	RIO ARRIBA	NM	29	N	5	W 7	O A650265	12001	BASIN::DAKOTA	11	G	9/27/06		9/26/06	11/20/06
300392938500C02	SAN JUAN 29-5 UT 62M MV	RIO ARRIBA	NM	29	N	5	W 7	O A650111	12001	BLANCO::MESAVERDE	11	G	9/27/06		9/22/06	11/20/06
300392071400S01	SAN JUAN 29-5 UT 63 DK	RIO ARRIBA	NM	29	N	5	W 17	M A650265	12001	BASIN::DAKOTA	11	G				
300392974100C01	SAN JUAN 29-5 UT 63F DK	RIO ARRIBA	NM	29	N	5	W 17	O A650265	12001	BASIN::DAKOTA	11	G	10/11/07		10/8/07	11/14/07
300392974100C02	SAN JUAN 29-5 UT 63F MV	RIO ARRIBA	NM	29	N	5	W 17	O A650111	12001	BLANCO::MESAVERDE	11	G	10/11/07		10/8/07	11/14/07
300392631100C01	SAN JUAN 29-5 UT 63M DK	RIO ARRIBA	NM	29	N	5	W 17	I A650265	12001	BASIN::DAKOTA	11	G			4/20/00	4/20/00
300392631100C02	SAN JUAN 29-5 UT 63M MV	RIO ARRIBA	NM	29	N	5	W 17	I A650111	12001	BLANCO::MESAVERDE	11	G			2/14/01	2/14/01
300392071100C01	SAN JUAN 29-5 UT 64 DK	RIO ARRIBA	NM	29	N	5	W 21	N A650265	12001	BASIN::DAKOTA	11	G				
300392071100C02	SAN JUAN 29-5 UT 64 MV	RIO ARRIBA	NM	29	N	5	W 21	N A650111	12001	BLANCO::MESAVERDE	11	G			3/27/01	3/27/01
300392973800C01	SAN JUAN 29-5 UT 64F DK	RIO ARRIBA	NM	29	N	5	W 21	F A650265	12001	BASIN::DAKOTA	11	G	9/27/07		9/27/07	11/14/07
300392973800C02	SAN JUAN 29-5 UT 64F MV	RIO ARRIBA	NM	29	N	5	W 21	F A650111	12001	BLANCO::MESAVERDE	11	G	9/27/07		9/24/07	11/14/07
300392583400C01	SAN JUAN 29-5 UT 64M DK	RIO ARRIBA	NM	29	N	5	W 21	E A650265	12001	BASIN::DAKOTA	11	G			1/21/99	1/21/99
300392583400C02	SAN JUAN 29-5 UT 64M MV	RIO ARRIBA	NM	29	N	5	W 21	E A650111	12001	BLANCO::MESAVERDE	11	G			4/14/99	4/14/99
300392070800C01	SAN JUAN 29-5 UT 65 DK	RIO ARRIBA	NM	29	N	5	W 28	M A650265	12001	BASIN::DAKOTA	11	G				
300392070800C02	SAN JUAN 29-5 UT 65 MV	RIO ARRIBA	NM	29	N	5	W 28	M A650111	12001	BLANCO::MESAVERDE	11	G			8/6/02	8/6/02
300392955400C01	SAN JUAN 29-5 UT 65F DK	RIO ARRIBA	NM	29	N	5	W 28	A650265	12001	BASIN::DAKOTA	11	G	5/26/06		7/10/06	7/10/06
300392955400C02	SAN JUAN 29-5 UT 65F MV	RIO ARRIBA	NM	29	N	5	W 28	A650111	12001	BLANCO::MESAVERDE	11	G	5/26/06		7/10/06	7/10/06
300392549200C01	SAN JUAN 29-5 UT 65M DK	RIO ARRIBA	NM	29	N	5	W 28	E A650265	12001	BASIN::DAKOTA	11	G			1/9/96	1/9/96
300392549200C02	SAN JUAN 29-5 UT 65M MV	RIO ARRIBA	NM	29	N	5	W 28	E A650111	12001	BLANCO::MESAVERDE	11	G			11/27/95	11/27/95
300392077300S01	SAN JUAN 29-5 UT 66 DK	RIO ARRIBA	NM	29	N	5	W 33	L A650265	12001	BASIN::DAKOTA	11	G				
300392973900C01	SAN JUAN 29-5 UT 66F DK	RIO ARRIBA	NM	29	N	5	W 33	D A650265	12001	BASIN::DAKOTA	11	G	6/29/06		8/9/06	8/9/06
300392973900C02	SAN JUAN 29-5 UT 66F MV	RIO ARRIBA	NM	29	N	5	W 33	D A650111	12001	BLANCO::MESAVERDE	11	G	6/29/06		8/9/06	8/9/06
300392921100C01	SAN JUAN 29-5 UT 66G DK	RIO ARRIBA	NM	29	N	5	W 33	N A650265	12001	BASIN::DAKOTA	11	G	12/22/05		1/24/06	1/24/06
300392921100C02	SAN JUAN 29-5 UT 66G MV	RIO ARRIBA	NM	29	N	5	W 33	N A650111	12001	BLANCO::MESAVERDE	11	G	12/22/05		1/24/06	1/24/06
300392630100C01	SAN JUAN 29-5 UT 66M DK	RIO ARRIBA	NM	29	N	5	W 33	E A650265	12001	BASIN::DAKOTA	11	G	5/30/00		6/13/00	6/13/00

PRODUCTION STATUS

- 11 - FLOWING WELL
- 41 - SHUT IN
- 59 - SOLD
- 61 - TEMP ABANDON
- 71 - PERM ABANDON ZONE
- 72 - PERM ABANDON WELL
- PA - PLUG ABANDON
- PS - PERM SHUT-IN



SAN JUAN 29-5 UNIT
STATUS OF WELLS REPORT 02/08/13

Api Well Code	Name	CTY	ST	TWN	RGE	SEC	Unit Letter	Lse ID	Oper ID	Rsvr Name	PROD STAT	COMP TYPE	COMP DATE	ABANDON DATE	INITIAL PROD DATE	FIRST SALES DATE		
300392630100C02	SAN JUAN 29-5 UT 66M MV	RIO ARRIBA	NM	29	N	5	W	33	E	A650111	12001	BLANCO::MESAVERDE	11	G	5/30/00	11/15/00	11/15/00	
300392070900C01	SAN JUAN 29-5 UT 67 DK	RIO ARRIBA	NM	29	N	5	W	20	A	A650265	12001	BASIN::DAKOTA	11	G				
300392070900C02	SAN JUAN 29-5 UT 67 MV	RIO ARRIBA	NM	29	N	5	W	20	A	A650111	12001	BLANCO::MESAVERDE	11	G	3/15/01	3/15/01	3/15/01	
300392974000C01	SAN JUAN 29-5 UT 67F DK	RIO ARRIBA	NM	29	N	5	W	20	F	A650265	12001	BASIN::DAKOTA	11	G	7/26/06	9/11/06	9/11/06	
300392974000C02	SAN JUAN 29-5 UT 67F MV	RIO ARRIBA	NM	29	N	5	W	20	F	A650111	12001	BLANCO::MESAVERDE	11	G	7/26/06	9/11/06	9/11/06	
300392582100C01	SAN JUAN 29-5 UT 67M DK	RIO ARRIBA	NM	29	N	5	W	20	D	A650265	12001	BASIN::DAKOTA	11	G		2/23/99	2/23/99	
300392582100C02	SAN JUAN 29-5 UT 67M MV	RIO ARRIBA	NM	29	N	5	W	20	D	A650111	12001	BLANCO::MESAVERDE	11	G		10/11/99	10/11/99	
300392071200S01	SAN JUAN 29-5 UT 68 DK	RIO ARRIBA	NM	29	N	5	W	18	A	A650265	12001	BASIN::DAKOTA	11	G				
300392657700C01	SAN JUAN 29-5 UT 68M DK	RIO ARRIBA	NM	29	N	5	W	18	I	A650265	12001	BASIN::DAKOTA	11	G		6/1/01	6/1/01	
300392657700C02	SAN JUAN 29-5 UT 68M MV	RIO ARRIBA	NM	29	N	5	W	18	I	A650111	12001	BLANCO::MESAVERDE	11	G		11/3/01	11/3/01	
300392106500C01	SAN JUAN 29-5 UT 69 DK	RIO ARRIBA	NM	29	N	5	W	21	I	A650265	12001	BASIN::DAKOTA	11	G	5/3/75			
300392106500C02	SAN JUAN 29-5 UT 69 MV	RIO ARRIBA	NM	29	N	5	W	21	I	A650111	12001	BLANCO::MESAVERDE	11	G		11/12/03	11/12/03	
300392972700C01	SAN JUAN 29-5 UT 69F DK	RIO ARRIBA	NM	29	N	5	W	21	A	A650265	12001	BASIN::DAKOTA	11	G	1/22/07	2/6/07	2/6/07	
300392972700C02	SAN JUAN 29-5 UT 69F MV	RIO ARRIBA	NM	29	N	5	W	21	A	A650111	12001	BLANCO::MESAVERDE	11	G	1/22/07	2/6/07	2/6/07	
300392972900C01	SAN JUAN 29-5 UT 69M DK	RIO ARRIBA	NM	29	N	5	W	21	O	A650265	12001	BASIN::DAKOTA	11	G	1/2/07	1/20/07	1/20/07	
300392972900C02	SAN JUAN 29-5 UT 69M MV	RIO ARRIBA	NM	29	N	5	W	21	O	A650111	12001	BLANCO::MESAVERDE	11	G	1/2/07	1/20/07	1/20/07	
300392637100C01	SAN JUAN 29-5 UT 6A DK	RIO ARRIBA	NM	29	N	5	W	27	D	A650265	12001	BASIN::DAKOTA	11	G		6/13/00	6/13/00	
300392637100C02	SAN JUAN 29-5 UT 6A MV	RIO ARRIBA	NM	29	N	5	W	27	D	A650111	12001	BLANCO::MESAVERDE	11	G		11/29/00	11/29/00	
300392981800C01	SAN JUAN 29-5 UT 6M DK	RIO ARRIBA	NM	29	N	5	W	27	N	A650265	12001	BASIN::DAKOTA	11	G	7/12/07	7/12/07	7/18/07	
300392981800C02	SAN JUAN 29-5 UT 6M MV	RIO ARRIBA	NM	29	N	5	W	27	N	A650111	12001	BLANCO::MESAVERDE	11	G	7/12/07	7/10/07	7/18/07	
300393056000C01	SAN JUAN 29-5 UT 6N DK	RIO ARRIBA	NM	29	N	5	W	27	C	A650265	12001	BASIN::DAKOTA	11	G	1/27/09	3/5/09	3/5/09	
300393056000C02	SAN JUAN 29-5 UT 6N MV	RIO ARRIBA	NM	29	N	5	W	27	C	A650111	12001	BLANCO::MESAVERDE	11	G	1/27/09	3/5/09	3/5/09	
300390767700S01	SAN JUAN 29-5 UT 7 MV	RIO ARRIBA	NM	29	N	5	W	7	A	A650111	12001	BLANCO::MESAVERDE	11	G				
300392105000S01	SAN JUAN 29-5 UT 70 DK	RIO ARRIBA	NM	29	N	5	W	28	H	A650265	12001	BASIN::DAKOTA	11	G	4/6/75	4/6/75	4/6/75	
300392966700C01	SAN JUAN 29-5 UT 70F DK	RIO ARRIBA	NM	29	N	5	W	28		A650265	12001	BASIN::DAKOTA	11	G	6/22/06	8/15/06	8/15/06	
300392966700C02	SAN JUAN 29-5 UT 70F MV	RIO ARRIBA	NM	29	N	5	W	28		A650111	12001	BLANCO::MESAVERDE	11	G	6/22/06	8/15/06	8/15/06	
300392965300C01	SAN JUAN 29-5 UT 70G DK	RIO ARRIBA	NM	29	N	5	W	29	B	A650265	12001	BASIN::DAKOTA	11	G	5/31/06	8/11/06	8/11/06	
300392965300C02	SAN JUAN 29-5 UT 70G MV	RIO ARRIBA	NM	29	N	5	W	29	B	A650111	12001	BLANCO::MESAVERDE	11	G	5/31/06	8/11/06	8/11/06	
300392629900C01	SAN JUAN 29-5 UT 70M DK	RIO ARRIBA	NM	29	N	5	W	28	O	A650265	12001	BASIN::DAKOTA	11	G		6/6/00	6/6/00	
300392629900C02	SAN JUAN 29-5 UT 70M MV	RIO ARRIBA	NM	29	N	5	W	28	O	A650111	12001	BLANCO::MESAVERDE	11	G		2/1/01	2/1/01	
300392105300S01	SAN JUAN 29-5 UT 71 DK	RIO ARRIBA	NM	29	N	5	W	16	M	A650269	12001	BASIN::DAKOTA	11	G	6/13/75			
300392105300S01	SAN JUAN 29-5 UT 71 DK	RIO ARRIBA	NM	29	N	5	W	16	M	A650269	12001	BASIN::DAKOTA	11	G	6/13/75			
300392105300S01	SAN JUAN 29-5 UT 71 DK	RIO ARRIBA	NM	29	N	5	W	16	M	A650269	12001	BASIN::DAKOTA	11	G	6/13/75			
300392105300S01	SAN JUAN 29-5 UT 71 DK	RIO ARRIBA	NM	29	N	5	W	16	M	A650269	12001	BASIN::DAKOTA	11	G	6/13/75			
300392956200C01	SAN JUAN 29-5 UT 72F DK	RIO ARRIBA	NM	29	N	5	W	17	E	A650572	12001	BASIN::DAKOTA	11	G	10/26/07	12/5/07	12/5/07	
300392956200C02	SAN JUAN 29-5 UT 72F MV	RIO ARRIBA	NM	29	N	5	W	17	E	A650111	12001	BLANCO::MESAVERDE	11	G	10/26/07	12/5/07	12/5/07	
300392654100C01	SAN JUAN 29-5 UT 72M DK	RIO ARRIBA	NM	29	N	5	W	17	C	A650572	12001	BASIN::DAKOTA	11	G		3/2/01	3/2/01	
300392654100C02	SAN JUAN 29-5 UT 72M MV	RIO ARRIBA	NM	29	N	5	W	17	C	A650111	12001	BLANCO::MESAVERDE	11	G		1/22/02	1/22/02	
300392102900C02	SAN JUAN 29-5 UT 74 FC	RIO ARRIBA	NM	29	N	5	W	17	L	A709685	12001	BASIN CB::FRUITLAND COAL	11	G		6/29/04	6/29/04	
300392102900C02	SAN JUAN 29-5 UT 74 FC	RIO ARRIBA	NM	29	N	5	W	17	L	A709685	12001	BASIN CB::FRUITLAND COAL	11	G		6/29/04	6/29/04	
300392102900C01	SAN JUAN 29-5 UT 74 MV	RIO ARRIBA	NM	29	N	5	W	17	L	A650111	12001	BLANCO::MESAVERDE	11	G				
300392105100S01	SAN JUAN 29-5 UT 75 DK	RIO ARRIBA	NM	29	N	5	W	22	M	A650265	12001	BASIN::DAKOTA	11	G				
300393008900S01	SAN JUAN 29-5 UT 75F DK	RIO ARRIBA	NM	29	N	5	W	22	C	A650265	12001	BASIN::DAKOTA	71	G	9/17/07	9/30/08	10/1/07	10/1/07
300393008900S02	SAN JUAN 29-5 UT 75F MV	RIO ARRIBA	NM	29	N	5	W	22	C	A650111	12001	BLANCO::MESAVERDE	11	G	9/17/07	10/1/07	10/1/07	
300392786200C01	SAN JUAN 29-5 UT 75M DK	RIO ARRIBA	NM	29	N	5	W	22	E	A650265	12001	BASIN::DAKOTA	11	G		6/3/05	6/3/05	
300392786200C02	SAN JUAN 29-5 UT 75M MV	RIO ARRIBA	NM	29	N	5	W	22	E	A650111	12001	BLANCO::MESAVERDE	11	G		6/3/05	6/3/05	
300392105500C01	SAN JUAN 29-5 UT 77 DK	RIO ARRIBA	NM	29	N	5	W	26	L	A650265	12001	BASIN::DAKOTA	61	G	7/2/02			
300392105500C02	SAN JUAN 29-5 UT 77 MV	RIO ARRIBA	NM	29	N	5	W	26	L	A650111	12001	BLANCO::MESAVERDE	11	G	7/2/02	11/27/04	12/10/04	
300392143700S01	SAN JUAN 29-5 UT 78 PC	RIO ARRIBA	NM	29	N	5	W	6	B	A650108	12001	GOBERNADOR:PICTURED CLIFF	72	G	1/17/78	3/14/97		

PRODUCTION STATUS

- 11 - FLOWING WELL
- 41 - SHUT IN
- 59 - SOLD
- 61 - TFMP ABANDON
- 71 - PERM ABANDON ZONE
- 72 - PERM ABANDON WELL
- PA - PLUG ABANDON
- PS - PERM SHUT-IN

**SAN JUAN 29-5 UNIT
STATUS OF WELLS REPORT 02/08/13**

Api Well Code	Name	CTY	ST	TWN	RGE	SEC	Unit Letter	Lse ID	Oper ID	Rsvr Name	PROD STAT	COMP TYPE	COMP DATE	ABANDON DATE	INITIAL PROD DATE	FIRST SALES DATE
300392134000S01	SAN JUAN 29-5 UT 7A MV	RIO ARRIBA	NM	29	N	5	W 7	I	A650111	12001	BLANCO::MESAVERDE	11	G			
300392933200S01	SAN JUAN 29-5 UT 7B MV	RIO ARRIBA	NM	29	N	5	W 7	G	A650111	12001	BLANCO::MESAVERDE	11	G	8/28/06	9/25/06	9/25/06
300390749000S01	SAN JUAN 29-5 UT 8 MV	RIO ARRIBA	NM	29	N	5	W 35	K	A650111	12001	BLANCO::MESAVERDE	11	G			
300392145400S01	SAN JUAN 29-5 UT 80 PC	RIO ARRIBA	NM	29	N	5	W 23	G	A650108	12001	GOBERNADOR:PICTURED CLIFF	11	G	10/31/97	10/31/97	10/31/97
300392178200S01	SAN JUAN 29-5 UT 81 PC	RIO ARRIBA	NM	29	N	5	W 6	D	A650108	12001	GOBERNADOR:PICTURED CLIFF	72	G	6/5/79	3/7/97	
300392180500S01	SAN JUAN 29-5 UT 87 PC	RIO ARRIBA	NM	29	N	5	W 25	C	A650108	12001	GOBERNADOR:PICTURED CLIFF	11	G			
300390753300S01	SAN JUAN 29-5 UT 9 MV	RIO ARRIBA	NM	29	N	5	W 26	L	A650111	12001	BLANCO::MESAVERDE	72	G		3/1/06	
300392178700S01	SAN JUAN 29-5 UT 90 DK	RIO ARRIBA	NM	29	N	5	W 35	N	A650265	12001	BASIN::DAKOTA	71	G	8/21/78	12/1/04	7/1/80
300392178700S02	SAN JUAN 29-5 UT 90 MV	RIO ARRIBA	NM	29	N	5	W 35	N	A650111	12001	BLANCO::MESAVERDE	11	G	12/8/04	12/8/04	12/8/04
300392973700S01	SAN JUAN 29-5 UT 90M DK	RIO ARRIBA	NM	29	N	5	W 35	F	A650265	12001	BASIN::DAKOTA	71	G	9/11/07	4/30/08	9/25/07
300392973700S02	SAN JUAN 29-5 UT 90M MV	RIO ARRIBA	NM	29	N	5	W 35	F	A650111	12001	BLANCO::MESAVERDE	11	G	9/11/07		9/25/07
300393067200C01	SAN JUAN 29-5 UT 90N DK	RIO ARRIBA	NM	29	N	5	W 35	F	A650265	12001	BASIN::DAKOTA	11	G	11/21/11		11/22/11
300393067200C02	SAN JUAN 29-5 UT 90N MV	RIO ARRIBA	NM	29	N	5	W 35	F	A650111	12001	BLANCO::MESAVERDE	11	G	11/21/11		11/22/11
300392178600S01	SAN JUAN 29-5 UT 91 DK	RIO ARRIBA	NM	29	N	5	W 35	B	A650265	12001	BASIN::DAKOTA	61	G	9/5/78		
300392178600S02	SAN JUAN 29-5 UT 91 MV	RIO ARRIBA	NM	29	N	5	W 35	B	A650640	12001	BLANCO::MESAVERDE	11	G		8/27/02	8/27/02
300392178600S02	SAN JUAN 29-5 UT 91 MV	RIO ARRIBA	NM	29	N	5	W 35	B	A650640	12001	BLANCO::MESAVERDE	11	G		8/27/02	8/27/02
300392178600S02	SAN JUAN 29-5 UT 91 MV	RIO ARRIBA	NM	29	N	5	W 35	B	A650640	12001	BLANCO::MESAVERDE	11	G		8/27/02	8/27/02
300393021900S02	SAN JUAN 29-5 UT 91F MV	RIO ARRIBA	NM	29	N	5	W 35	J	A650640	12001	BLANCO::MESAVERDE	11	G	9/3/07	9/25/07	9/25/07
300392973200C01	SAN JUAN 29-5 UT 91M DK	RIO ARRIBA	NM	29	N	5	W 35	O	A650265	12001	BASIN::DAKOTA	11	G	9/19/07	10/9/07	10/9/07
300392973200C02	SAN JUAN 29-5 UT 91M MV	RIO ARRIBA	NM	29	N	5	W 35	O	A710742	12001	BLANCO::MESAVERDE	11	G	9/19/07	10/9/07	10/9/07
300392178400S01	SAN JUAN 29-5 UT 93 PC	RIO ARRIBA	NM	29	N	5	W 23	C	A650108	12001	GOBERNADOR:PICTURED CLIFF	11	G			
300392180100S01	SAN JUAN 29-5 UT 94 PC	RIO ARRIBA	NM	29	N	5	W 23	P	A650108	12001	GOBERNADOR:PICTURED CLIFF	11	G			
300392209800S01	SAN JUAN 29-5 UT 97 PC	RIO ARRIBA	NM	29	N	5	W 15	P	A650108	12001	GOBERNADOR:PICTURED CLIFF	11	G	7/16/80		

PRODUCTION STATUS

11 - FLOWING WELL 71 - PERM ABANDON ZONE
41 - SHUT IN 72 - PERM ABANDON WELL
59 - SOLD PA - PLUG ABANDON
61 - TEMP ABANDON PS - PERM SHUT-IN