

Chi Energy, Inc.

Peacekeeper Prospect

2nd Bone Spring Structure

Eddy County, New Mexico



POSTED WELL DATA
Well Name
Well Number

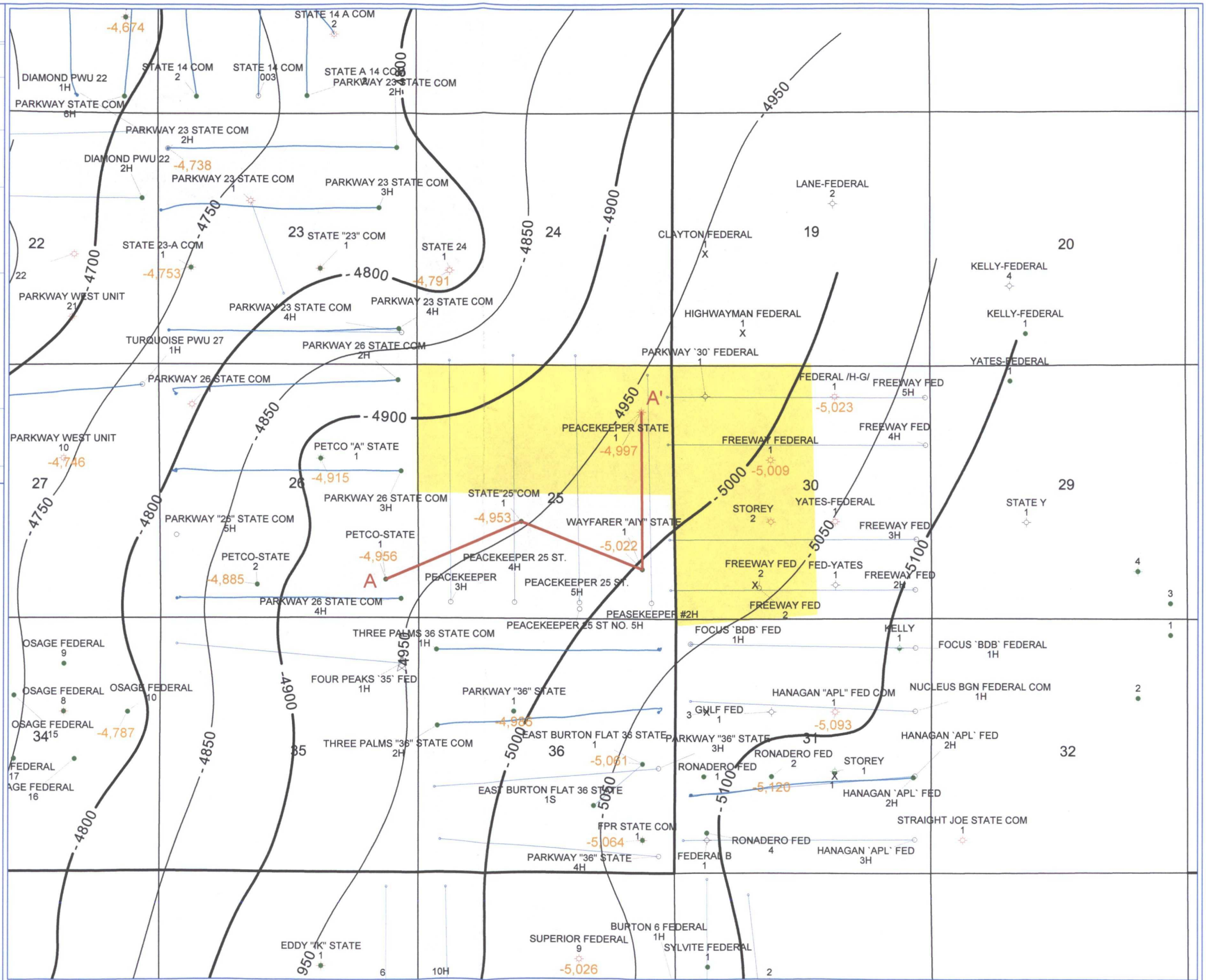
FMTOPS - 2ND_B_SPRG_SD_BASE/TARGET_PAY[DS] (SS) (FEET)

- WELL SYMBOLS
- Location Only
 - Oil Well
 - Gas Well
 - Dry Hole
 - X Abandoned Location - Permit
 - Dry Hole, With Show of Oil
 - Dry Hole, With Show of Oil & Gas
 - Dry Hole, With Show of Gas
 - Drilling Well

REMARKS

C.I. = 50'
Scale 1" = 2,000'

January 17, 2013



Oil Conservation Division
Case No. 6
Exhibit No. 6