

Mewbourne Oil Co

Eddy County, New Mexico

Sec 35, T23S, R28E

Layla 35 PA Fee Com #1H

Wellbore #1

Plan: Design #1

DDC Well Planning Report

19 June, 2013

Oil Conservation Division
Case No. _____
Exhibit No. 14



DDC
Well Planning Report



Database:	EDM 5000.1 Single User Db	Local Co-ordinate Reference:	Well Layla 35 PA Fee Com #1H
Company:	Mawbourne Oil Co	TVD Reference:	WELL @ 3005.0usft (Patterson-UT)
Project:	Eddy County, New Mexico	MD Reference:	WELL @ 3005.0usft (Patterson-UT)
Site:	Sec 35, T23S, R28E	North Reference:	Grid
Well:	Layla 35 PA Fee Com #1H	Survey Calculation Method:	Minimum Curvature
Wellbore:	Wellbore #1		
Design:	Design #1		

Project	Eddy County, New Mexico		
Map System:	US State Plane 1927 (Exact solution)	System Datum:	Mean Sea Level
Geo Datum:	NAD 1927 (NADCON CONUS)		
Map Zone:	New Mexico East 3001		

Site	Sec 35, T23S, R28E				
Sita Position:		Northing:	456,438.18 usft	Latitude:	32° 15' 16.415 N
From:	Map	Easting:	585,924.08 usft	Longitude:	104° 3' 19.382 W
Position Uncertainty:	0.0 usft	Slot Radius:	13-3/16"	Grid Convergence:	0.15°

Well	Layla 35 PA Fee Com #1H					
Well Position	+N/-S	7.7 usft	Northing:	456,445.89 usft	Latitude:	32° 15' 16.449 N
	+E/-W	1,649.6 usft	Easting:	587,573.64 usft	Longitude:	104° 3' 0.172 W
Position Uncertainty		0.0 usft	Wellhead Elevation:		Ground Level:	2,985.0 usft

Wellbore	Wellbore #1				
Magnetics	Model Name	Sample Date	Declination (°)	Dip Angle (°)	Field Strength (nT)
	IGRF2010	6/19/2013	7.56	60.08	48,384

Design	Design #1				
Audit Notes:					
Version:	Phase:	PLAN	Tie On Depth:	0.0	
Vertical Section:	Depth From (TVD) (usft)	+N/-S (usft)	+E/-W (usft)	Direction (°)	
	0.0	0.0	0.0	356.66	

Plan Sections										
Measured Depth (usft)	Inclination (°)	Azimuth (°)	Vertical Depth (usft)	+N/-S (usft)	+E/-W (usft)	Dogleg Rate (°/100usft)	Build Rate (°/100usft)	Turn Rate (°/100usft)	TFO (°)	Target
0.0	0.00	0.00	0.0	0.0	0.0	0.00	0.00	0.00	0.00	
7,882.5	0.00	0.00	7,882.5	0.0	0.0	0.00	0.00	0.00	0.00	
8,632.5	90.00	356.66	8,360.0	476.7	-27.8	12.00	12.00	0.00	356.66	
12,994.9	90.00	356.66	8,360.0	4,831.6	-281.8	0.00	0.00	0.00	0.00	PBHL - Layla 35 PA F

DDC
Well Planning Report



Database:	EDM 5000.1 Single User Db	Local Co-ordinate Reference:	Well Layla 35 PA Fee Com #1H
Company:	Mewbourne Oil Co	TVD Reference:	WELL @ 3005.0usft (Patterson-UTI)
Project:	Eddy County, New Mexico	MD Reference:	WELL @ 3005.0usft (Patterson-UTI)
Site:	Sec 35, T23S, R28E	North Reference:	Grid
Well:	Layla 35 PA Fee Com #1H	Survey Calculation Method:	Minimum Curvature
Wellbore:	Wellbore #1		
Design:	Design #1		

Planned Survey

Measured Depth (usft)	Inclination (°)	Azimuth (°)	Vertical Depth (usft)	+N/-S (usft)	+E/-W (usft)	Vertical Section (usft)	Dogleg Rate (°/100usft)	Build Rate (°/100usft)	Turn Rate (°/100usft)
Build @ 12°/100'									
7,882.5	0.00	0.00	7,882.5	0.0	0.0	0.0	0.00	0.00	0.00
7,900.0	2.10	356.66	7,900.0	0.3	0.0	0.3	12.00	12.00	0.00
8,000.0	14.10	356.66	7,998.8	14.4	-0.8	14.4	12.00	12.00	0.00
8,100.0	26.10	356.66	8,092.6	48.6	-2.8	48.7	12.00	12.00	0.00
8,200.0	38.10	356.66	8,177.1	101.5	-5.9	101.7	12.00	12.00	0.00
8,300.0	50.10	356.66	8,248.8	170.9	-10.0	171.2	12.00	12.00	0.00
8,400.0	62.10	356.66	8,304.5	253.6	-14.8	254.0	12.00	12.00	0.00
8,500.0	74.10	356.66	8,341.7	346.0	-20.2	346.6	12.00	12.00	0.00
8,600.0	86.10	356.66	8,358.9	444.2	-25.9	445.0	12.00	12.00	0.00
EOB @ 90° Inc / 358.66° Azm / 8360' TVD									
8,632.5	90.00	356.66	8,360.0	476.7	-27.8	477.5	12.00	12.00	0.00
8,700.0	90.00	356.66	8,360.0	544.0	-31.7	544.9	0.00	0.00	0.00
8,800.0	90.00	356.66	8,360.0	643.8	-37.6	644.9	0.00	0.00	0.00
8,900.0	90.00	356.66	8,360.0	743.7	-43.4	744.9	0.00	0.00	0.00
9,000.0	90.00	356.66	8,360.0	843.5	-49.2	844.9	0.00	0.00	0.00
9,100.0	90.00	356.66	8,360.0	943.3	-55.0	944.9	0.00	0.00	0.00
9,200.0	90.00	356.66	8,360.0	1,043.2	-60.8	1,044.9	0.00	0.00	0.00
9,300.0	90.00	356.66	8,360.0	1,143.0	-66.7	1,144.9	0.00	0.00	0.00
9,400.0	90.00	356.66	8,360.0	1,242.8	-72.5	1,244.9	0.00	0.00	0.00
9,500.0	90.00	356.66	8,360.0	1,342.6	-78.3	1,344.9	0.00	0.00	0.00
9,600.0	90.00	356.66	8,360.0	1,442.5	-84.1	1,444.9	0.00	0.00	0.00
9,700.0	90.00	356.66	8,360.0	1,542.3	-90.0	1,544.9	0.00	0.00	0.00
9,800.0	90.00	356.66	8,360.0	1,642.1	-95.8	1,644.9	0.00	0.00	0.00
9,900.0	90.00	356.66	8,360.0	1,742.0	-101.6	1,744.9	0.00	0.00	0.00
10,000.0	90.00	356.66	8,360.0	1,841.8	-107.4	1,844.9	0.00	0.00	0.00
10,100.0	90.00	356.66	8,360.0	1,941.6	-113.3	1,944.9	0.00	0.00	0.00
10,200.0	90.00	356.66	8,360.0	2,041.5	-119.1	2,044.9	0.00	0.00	0.00
10,300.0	90.00	356.66	8,360.0	2,141.3	-124.9	2,144.9	0.00	0.00	0.00
10,400.0	90.00	356.66	8,360.0	2,241.1	-130.7	2,244.9	0.00	0.00	0.00
10,500.0	90.00	356.66	8,360.0	2,341.0	-136.6	2,344.9	0.00	0.00	0.00
10,600.0	90.00	356.66	8,360.0	2,440.8	-142.4	2,444.9	0.00	0.00	0.00
10,700.0	90.00	356.66	8,360.0	2,540.6	-148.2	2,544.9	0.00	0.00	0.00
10,800.0	90.00	356.66	8,360.0	2,640.4	-154.0	2,644.9	0.00	0.00	0.00
10,900.0	90.00	356.66	8,360.0	2,740.3	-159.8	2,744.9	0.00	0.00	0.00
11,000.0	90.00	356.66	8,360.0	2,840.1	-165.7	2,844.9	0.00	0.00	0.00
11,100.0	90.00	356.66	8,360.0	2,939.9	-171.5	2,944.9	0.00	0.00	0.00
11,200.0	90.00	356.66	8,360.0	3,039.8	-177.3	3,044.9	0.00	0.00	0.00
11,300.0	90.00	356.66	8,360.0	3,139.6	-183.1	3,144.9	0.00	0.00	0.00
11,400.0	90.00	356.66	8,360.0	3,239.4	-189.0	3,244.9	0.00	0.00	0.00
11,500.0	90.00	356.66	8,360.0	3,339.3	-194.8	3,344.9	0.00	0.00	0.00
11,600.0	90.00	356.66	8,360.0	3,439.1	-200.6	3,444.9	0.00	0.00	0.00
11,700.0	90.00	356.66	8,360.0	3,538.9	-206.4	3,544.9	0.00	0.00	0.00
11,800.0	90.00	356.66	8,360.0	3,638.7	-212.3	3,644.9	0.00	0.00	0.00
11,900.0	90.00	356.66	8,360.0	3,738.6	-218.1	3,744.9	0.00	0.00	0.00
12,000.0	90.00	356.66	8,360.0	3,838.4	-223.9	3,844.9	0.00	0.00	0.00
12,100.0	90.00	356.66	8,360.0	3,938.2	-229.7	3,944.9	0.00	0.00	0.00
12,200.0	90.00	356.66	8,360.0	4,038.1	-235.6	4,044.9	0.00	0.00	0.00
12,300.0	90.00	356.66	8,360.0	4,137.9	-241.4	4,144.9	0.00	0.00	0.00
12,400.0	90.00	356.66	8,360.0	4,237.7	-247.2	4,244.9	0.00	0.00	0.00
12,500.0	90.00	356.66	8,360.0	4,337.6	-253.0	4,344.9	0.00	0.00	0.00
12,600.0	90.00	356.66	8,360.0	4,437.4	-258.8	4,444.9	0.00	0.00	0.00
12,700.0	90.00	356.66	8,360.0	4,537.2	-264.7	4,544.9	0.00	0.00	0.00

DDC
Well Planning Report



Database:	EDM 5000.1 Single User Db	Local Co-ordinate Reference:	Well Layla 35 PA Fee Com #1H
Company:	Mewbourne Oil Co	TVD Reference:	WELL @ 3005.0usft (Patterson-UTI)
Project:	Eddy County, New Mexico	MD Reference:	WELL @ 3005.0usft (Patterson-UTI)
Site:	Sec 35 T23S, R28E	North Reference:	Grid
Well:	Layla 35 PA Fee Com #1H	Survey Calculation Method:	Minimum Curvature
Wellbore:	Wellbore #1		
Design:	Design #1		

Planned Survey										
Measured Depth (usft)	Inclination (°)	Azimuth (°)	Vertical Depth (usft)	+N/-S (usft)	+E/-W (usft)	Vertical Section (usft)	Dogleg Rate (°/100usft)	Build Rate (°/100usft)	Turn Rate (°/100usft)	
12,800.0	90.00	356.66	8,360.0	4,637.0	-270.5	4,644.9	0.00	0.00	0.00	
12,900.0	90.00	356.66	8,360.0	4,736.9	-276.3	4,744.9	0.00	0.00	0.00	
TD @ 12995' MD / 8360' TVD										
12,994.9	90.00	356.66	8,360.0	4,831.6	-281.8	4,839.8	0.00	0.00	0.00	

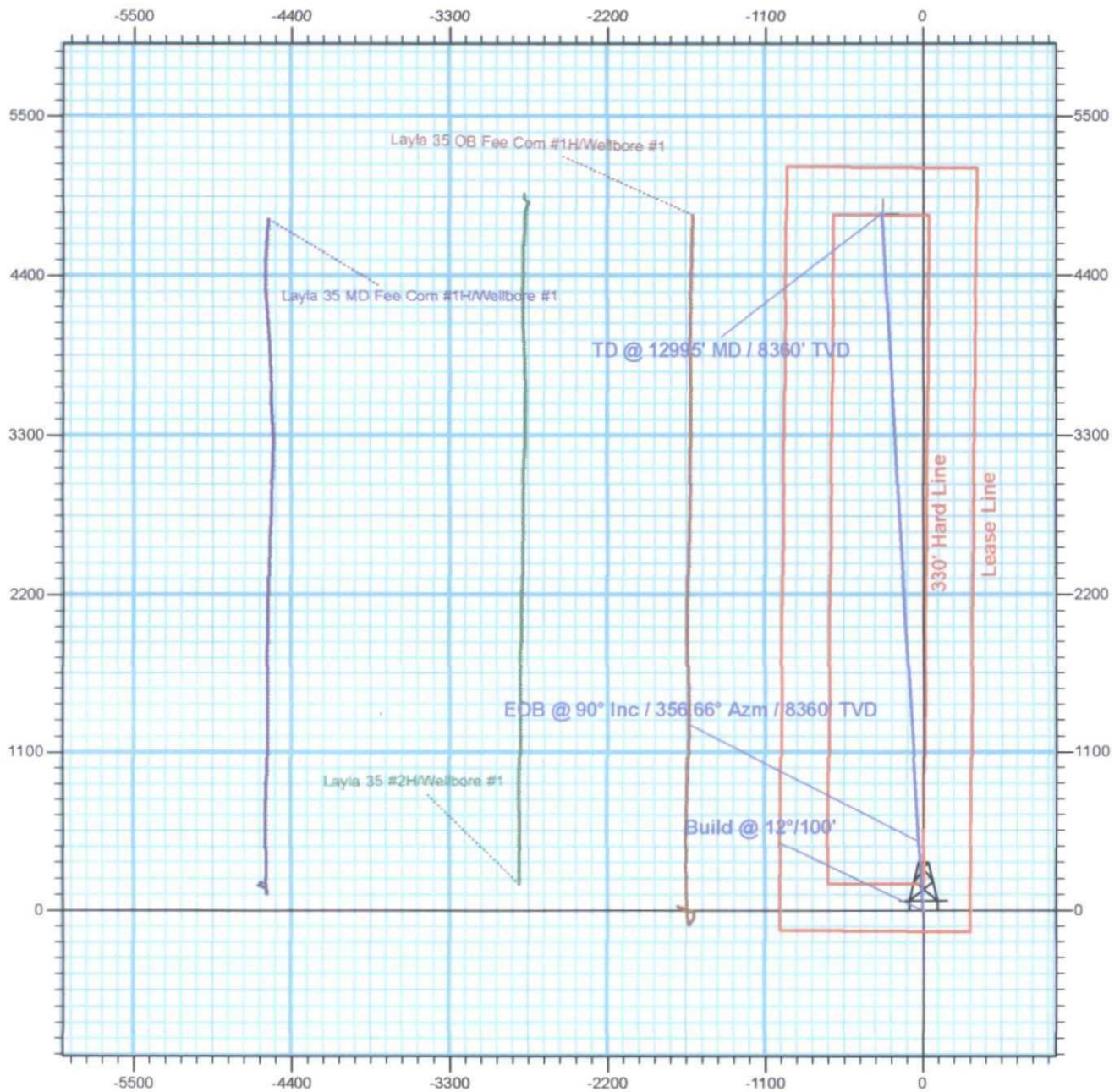
Design Targets										
Target Name	hit/miss target	Dip Angle (°)	Dip Dir. (°)	TVD (usft)	+N/-S (usft)	+E/-W (usft)	Northing (usft)	Easting (usft)	Latitude	Longitude
PBHL - Layla 35 PA Fee		0.00	0.00	8,360.0	4,831.6	-281.8	461,277.50	587,291.80	32° 16' 4.271 N	104° 3' 3.307 W
- plan hits target center										
- Point										

Plan Annotations					
Measured Depth (usft)	Vertical Depth (usft)	Local Coordinates		Comment	
		+N/-S (usft)	+E/-W (usft)		
7,882.5	7,882.5	0.0	0.0	Build @ 12°/100'	
8,632.5	8,360.0	476.7	-27.8	EOB @ 90° Inc / 356.66° Azm / 8360' TVD	
12,994.9	8,360.0	4,831.6	-281.8	TD @ 12995' MD / 8360' TVD	

Mewbourne Oil Company

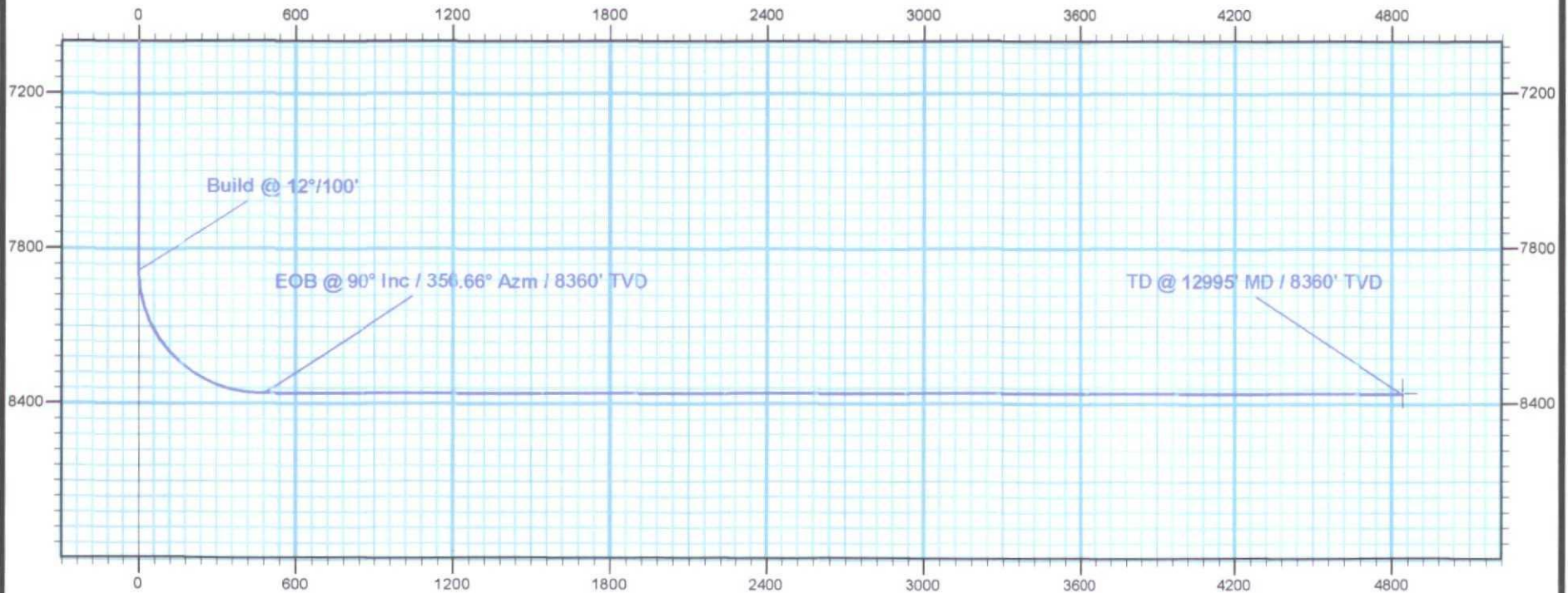
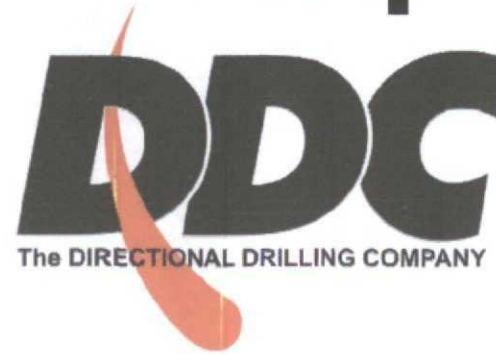


Eddy County, New Mexico
Layla 35 PA Fee Com #1H
Quote 130535
Design #1



Mewbourne Oil Company

Eddy County, New Mexico
Layla 35 PA Fee Com #1H
Quote 130535
Design #1



Vertical Section at 356.66° (600 usft/in)