

W

E

3001528270200 1314 ft 2272 ft 543 ft 3001528270200

STATION
 2510 N. 3000' F.W.
 TWP. 18 S. Range 27 E. Sec. 7
 Reference: 20
 Datum: 550'

MARK (P) CO
 PETROBRAS COM #1
 TWP. 18 S. Range 27 E. Sec. 7
 Reference: 20
 Datum: 550'

MAC
 1795 FSL, 185 F.W.
 TWP. 18 S. Range 27 E. Sec. 7
 Reference: 20
 Datum: 550'

LAKE ROCK RES I.A.P.
 HAWK #1
 TWP. 18 S. Range 27 E. Sec. 8
 Reference: 20
 Datum: 548'

7F

7J

7I

8L

Stirling 7F #6 projected in 1175 from the North and shifted down 3.5 to fit plan

Peterson Com #1 projected in 185 from the North and shifted down 7.5 to fit plan

Peterson TIL Fed Com #1H
 SL: 1795 FSL & 150 F.WL, T188 - R27E, Sec. 8
 PBHL: 1795 FSL & 330 F.WL, T188 - R27E, Sec. 7

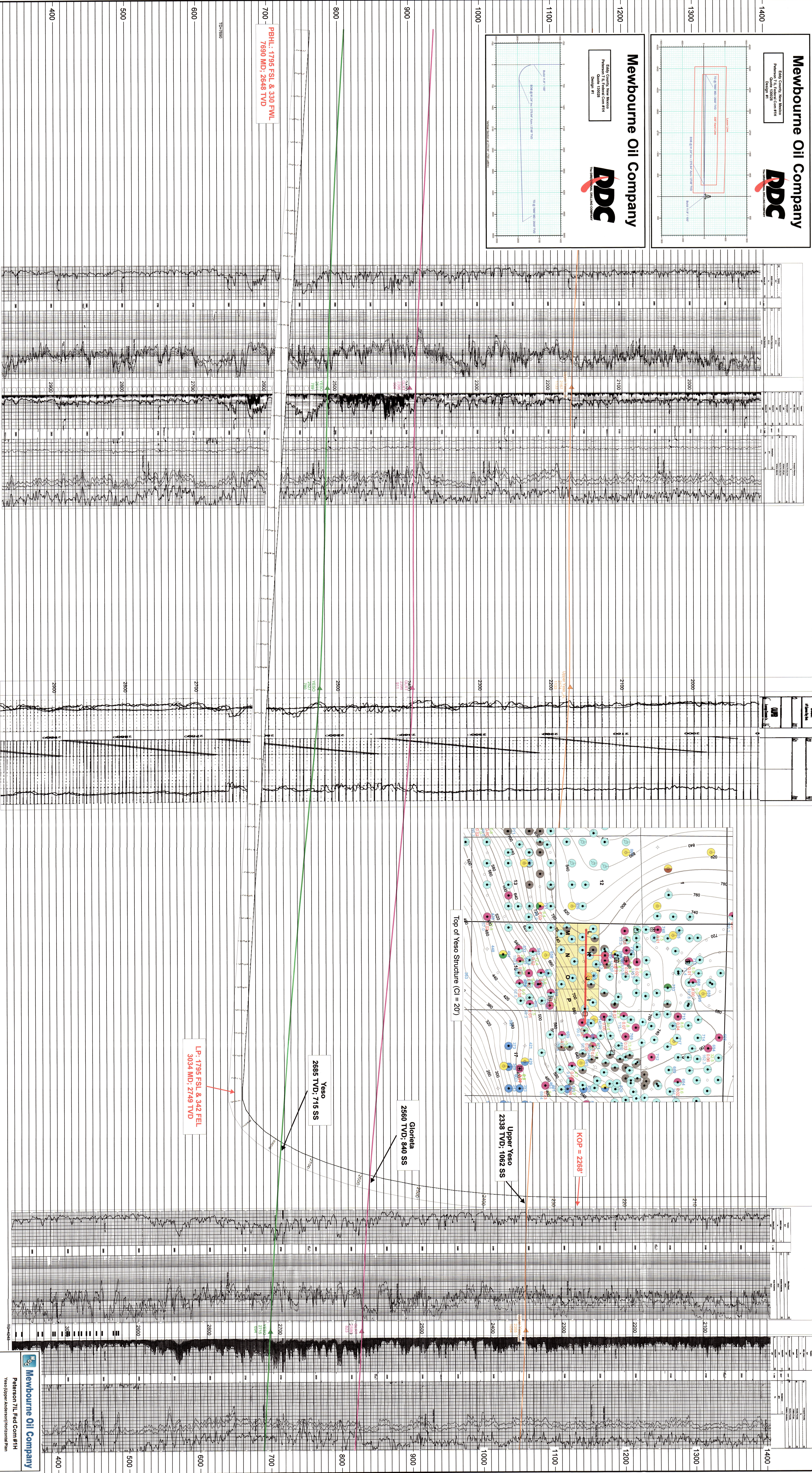
Hawk #1 Fed #15 projected in 145 from the South and shifted up 5' to fit plan.

Mewbourne Oil Company
 Eddy County, New Mexico
 Petroleum TIL Fed Com #1H
 Chapter #1

PDC
 THE OILFIELD PARTNERSHIP COMPANY

Mewbourne Oil Company
 Eddy County, New Mexico
 Petroleum TIL Fed Com #1H
 Chapter #1

PDC
 THE OILFIELD PARTNERSHIP COMPANY



Mewbourne Oil Company
 Peterson TIL Fed Com #1H
 Yeso/Upper Assorted/Innocuous Plan

DATE	REVISION
2008-07-27	1
2008-07-27	2

Page 3