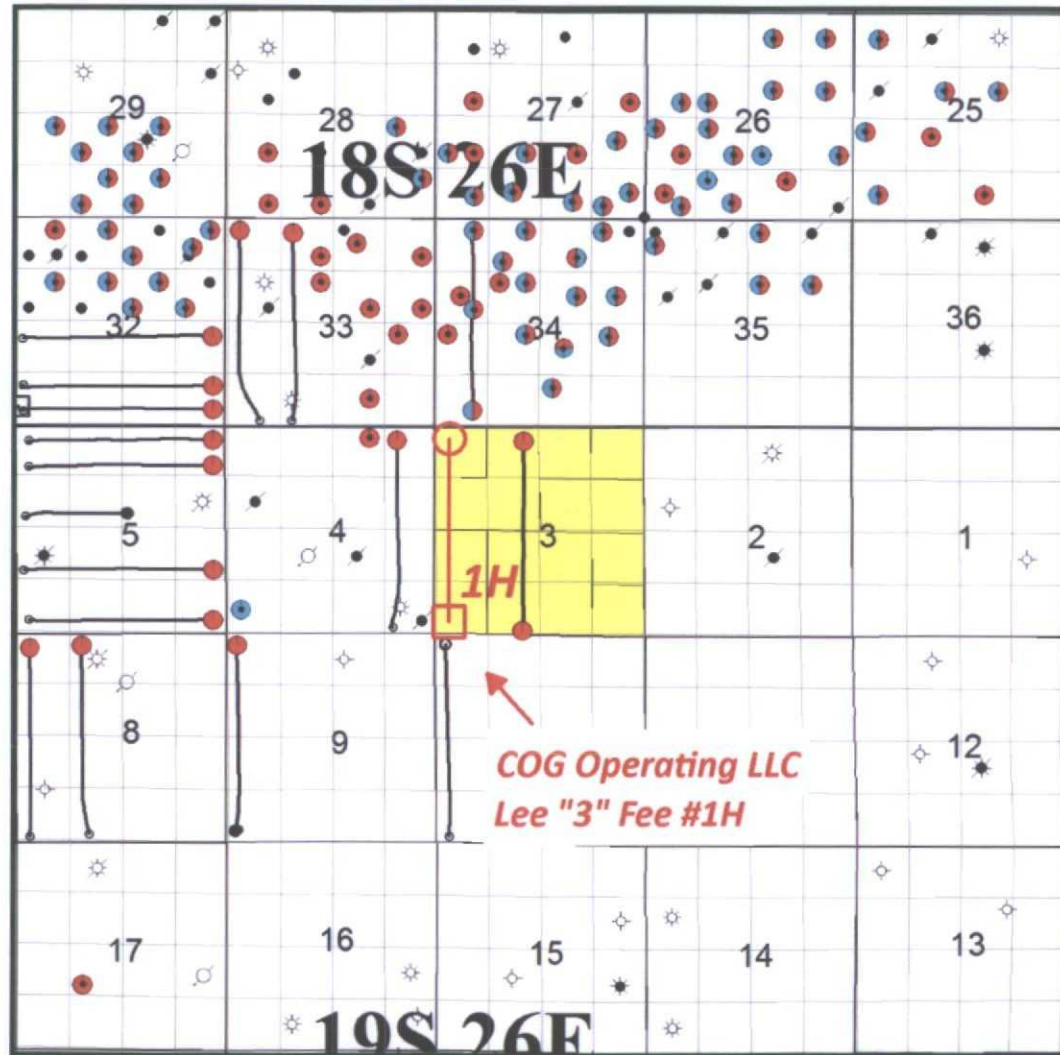


**COG OPERATING LLC
LEE "3" FEE # 1H HEARING
(API:30-015-39586)**

Lakewood Area - Eddy County, New Mexico



Lakewood Area – Lee “3” Fee #1H Lease Map



Map Legend

 Paddock Producer

 Blinebry Producer

BHL  COG - Horizontal Location
(Lee “3” Fee #1H)

SHL 

 Concho Acreage



BEFORE THE OIL CONSERVATION DIVISION
Santa Fe, New Mexico
Exhibit No. 1
Submitted by: COG OPERATING LLC
Hearing Date: January 22, 2014