



159

ConocoPhillips
San Juan Business Unit
Land Department
P.O. Box 4289
Farmington, NM 87499-4289

February 28, 2014

Bureau of Land Management
6251 College Blvd, Suite A
Farmington, NM 87402

Commissioner of Public Lands
State of New Mexico
P. O. Box 1148
Santa Fe, NM 87501-1148

Oil Conservation Division
State of New Mexico
1220 S. Saint Francis Drive
Santa Fe, NM 87505

RE: **2014 Plan of Development
Lindrith "B" Unit, I SEC. #713
Rio Arriba County, New Mexico**

Ladies and Gentlemen:

The following Participating Areas currently exist in the Lindrith Unit:

FORMATION	EXPANSION	EFFECTIVE DATE
GALLUP	INITIAL	01-JAN-86
DAKOTA	004	01-NOV-84

The 2013 Plan of Development (or amendments thereto) provided for the following activity:

WELL NAME	FORMATION	TYPE	DEDICATION	STATUS
LINDRITH B UNIT 114H	GALLUP-DAKOTA	NewDrill - Single Directional	N/2 SEC 10 & NW/4 SEC 11 011-024N-003W	CANCELLED
LINDRITH B UNIT 115H	GALLUP-DAKOTA	NewDrill - Single Directional	N/2 SEC 21 & NW SEC 22 022-024N-003W	CANCELLED

Pursuant to Section 9 of the Lindrith Unit Agreement, ConocoPhillips Company, as Unit Operator, is hereby providing notification that there is no activity currently scheduled for 2014.

The working interest owners are being furnished a copy of this letter, well status listing and enclosed map. ConocoPhillips, as Unit Operator, will drill any offset wells required to prevent drainage of unitized substances and any other wells deemed necessary by the working interest owners or Unit Operator.

In accordance to Section 10 of the Unit Agreement, please provide your approvals by executing and returning a copy of this letter to the undersigned.

Please contact me at (505) 324-6180 if there are any questions regarding this letter.

Sincerely,

Vanessa Thompson, RPL
Land Supervisor, SE

VMT/jmr

XC: Lindrith Unit, 3.0 (2014)
Lindrith Unit Working Interest Owners

LINDRITH UNIT
2014 PLAN OF DEVELOPMENT

LINDRITH UNIT
2014 PLAN OF DEVELOPMENT APPROVALS

Bureau of Land Management

Date

New Mexico Oil Conservation Division

Date

New Mexico Commissioner of Public Lands

Date

LINDRITH UNIT
2014 PLAN OF DEVELOPMENT

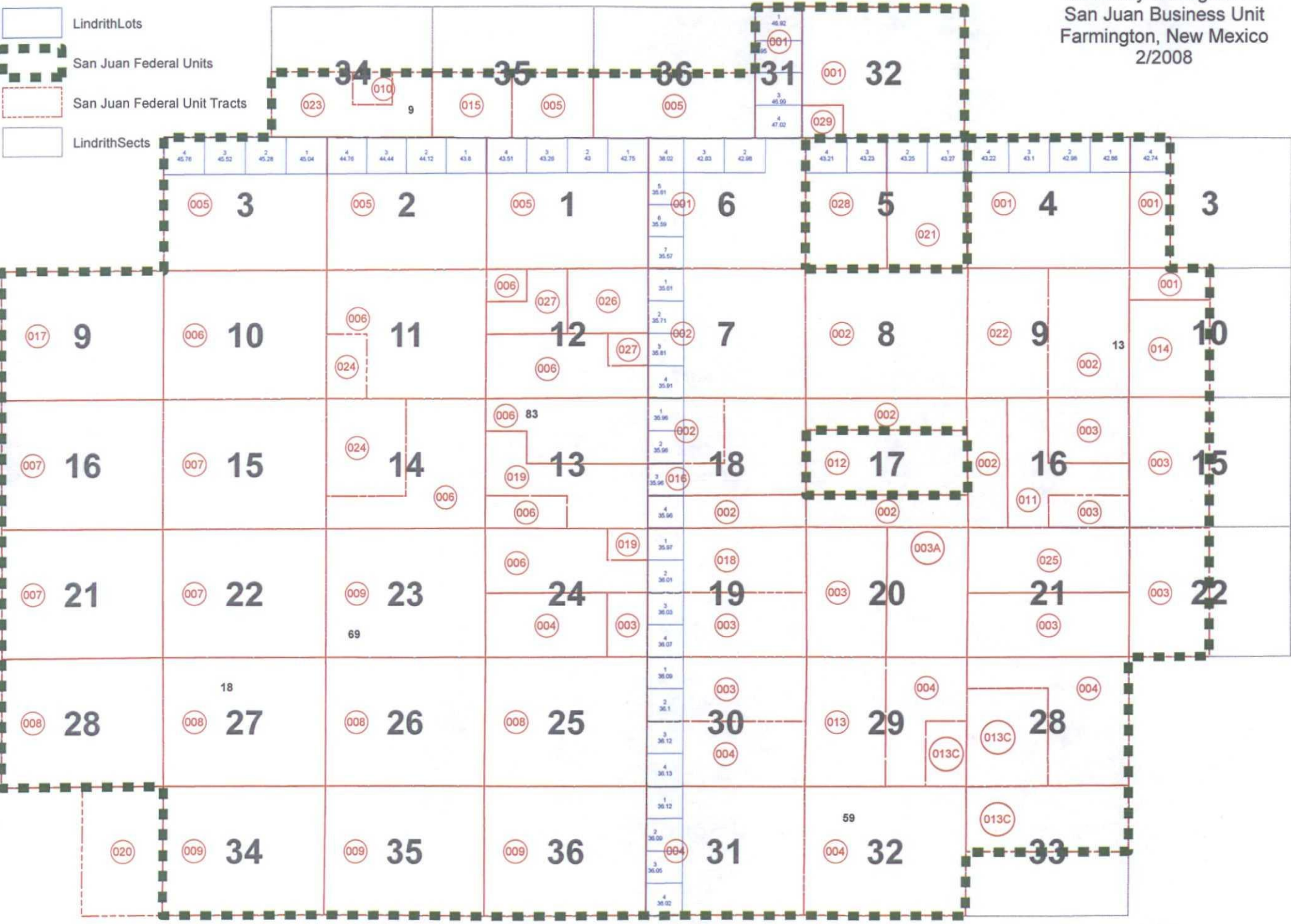
LINDRITH UNIT WORKING INTEREST OWNER

CONOCOPHILLIPS COMPANY

Lindrith Unit

Inventory Management
 San Juan Business Unit
 Farmington, New Mexico
 2/2008

-  LindrithLots
-  San Juan Federal Units
-  San Juan Federal Unit Tracts
-  LindrithSects



**LINDRITH B UNIT
STATUS OF WELLS -02/28/2014**

API	Well Name	County	State	Township	Range	Section Number	Unit Letter	Oper Name	Rsvr Name	Production Status	Completion Date	Abandon Date	Initial Production Date	First Sale Date
3003922137	LINDRITH B UNIT 1	RIO ARRIBA	NM	24N	3W	28	D	CONOCOPHILLIPS COMPANY	LINDRITH WEST::GALLUP DK	21	2/4/1980		2/4/1980	2/20/1980
3003922402	LINDRITH B UNIT 10	RIO ARRIBA	NM	24N	3W	34	J	CONOCOPHILLIPS COMPANY	LINDRITH WEST::GALLUP DK	11	9/15/1980		9/15/1980	9/15/1980
3003925722	LINDRITH B UNIT 103	RIO ARRIBA	NM	24N	2W	18	D	CONOCOPHILLIPS COMPANY	LINDRITH WEST::GALLUP DK	11	4/17/1998		4/17/1998	4/17/1998
3003926791	LINDRITH B UNIT 108	RIO ARRIBA	NM	24N	3W	15	G	CONOCOPHILLIPS COMPANY	LINDRITH WEST::GALLUP DK	11				
3003922535	LINDRITH B UNIT 11	RIO ARRIBA	NM	24N	3W	16	M	CONOCOPHILLIPS COMPANY	LINDRITH WEST::GALLUP DK	11	1/13/1981		1/13/1981	1/13/1981
3003926820	LINDRITH B UNIT 110	RIO ARRIBA	NM	24N	3W	15	O	CONOCOPHILLIPS COMPANY	LINDRITH WEST::GALLUP DK	11			2/25/2002	2/25/2002
3003926766	LINDRITH B UNIT 113	RIO ARRIBA	NM	24N	3W	10	O	CONOCOPHILLIPS COMPANY	LINDRITH WEST::GALLUP DK	11			11/20/2001	11/20/2001
3003931117	LINDRITH B UNIT 114H	RIO ARRIBA	NM	24N	3W	10	E	CONOCOPHILLIPS COMPANY	LINDRITH WEST::GALLUP DK	88				
3003922550	LINDRITH B UNIT 12	RIO ARRIBA	NM	24N	3W	22	M	CONOCOPHILLIPS COMPANY	LINDRITH WEST::GALLUP DK	11	3/12/1981		3/12/1981	3/12/1981
3003922551	LINDRITH B UNIT 13	RIO ARRIBA	NM	24N	3W	27	E	CONOCOPHILLIPS COMPANY	LINDRITH WEST::GALLUP DK	11	4/13/1981		4/13/1981	4/13/1981
3003922554	LINDRITH B UNIT 14	RIO ARRIBA	NM	24N	3W	16	E	CONOCOPHILLIPS COMPANY	LINDRITH WEST::GALLUP DK	11	4/6/1981		4/6/1981	4/6/1981
3003922555	LINDRITH B UNIT 15	RIO ARRIBA	NM	24N	3W	21	O	CONOCOPHILLIPS COMPANY	LINDRITH WEST::GALLUP DK	21	2/19/1981		2/19/1981	2/19/1981
3003922549	LINDRITH B UNIT 16	RIO ARRIBA	NM	24N	3W	21	A	CONOCOPHILLIPS COMPANY	LINDRITH WEST::GALLUP DK	11	1/22/1981		1/22/1981	1/22/1981
3003922712	LINDRITH B UNIT 17	RIO ARRIBA	NM	24N	3W	16	O	CONOCOPHILLIPS COMPANY	LINDRITH WEST::GALLUP DK	11	7/27/1981		7/27/1981	7/27/1981
3003922713	LINDRITH B UNIT 18	RIO ARRIBA	NM	24N	3W	22	E	CONOCOPHILLIPS COMPANY	LINDRITH WEST::GALLUP DK	11	6/30/1981		6/30/1981	6/30/1981
3003922715	LINDRITH B UNIT 19	RIO ARRIBA	NM	24N	3W	27	G	CONOCOPHILLIPS COMPANY	LINDRITH WEST::GALLUP DK	11	6/11/1981		6/11/1981	6/11/1981
3003922138	LINDRITH B UNIT 2	RIO ARRIBA	NM	24N	3W	28	L	CONOCOPHILLIPS COMPANY	LINDRITH WEST::GALLUP DK	11	3/17/1980		3/17/1980	3/17/1980
3003922714	LINDRITH B UNIT 20	RIO ARRIBA	NM	24N	3W	28	E	CONOCOPHILLIPS COMPANY	LINDRITH WEST::GALLUP DK	11	5/11/1981		5/11/1981	5/11/1981
3003922711	LINDRITH B UNIT 21	RIO ARRIBA	NM	24N	3W	15	M	CONOCOPHILLIPS COMPANY	LINDRITH WEST::GALLUP DK	11	7/16/1981		7/16/1981	7/16/1981
3003923036	LINDRITH B UNIT 22	RIO ARRIBA	NM	24N	3W	15	E	CONOCOPHILLIPS COMPANY	LINDRITH WEST::GALLUP DK	11	10/19/1982		10/19/1982	10/19/1982
3003923037	LINDRITH B UNIT 23	RIO ARRIBA	NM	24N	3W	18	G	CONOCOPHILLIPS COMPANY	LINDRITH WEST::GALLUP DK	11	10/25/1982		10/25/1982	10/25/1982
3003923241	LINDRITH B UNIT 24	RIO ARRIBA	NM	24N	3W	9	N	CONOCOPHILLIPS COMPANY	LINDRITH WEST::GALLUP DK	72	9/29/1983	2/14/2007	1/1/1994	9/29/1983
3003923247	LINDRITH B UNIT 25	RIO ARRIBA	NM	24N	3W	9	O	CONOCOPHILLIPS COMPANY	LINDRITH WEST::GALLUP DK	72	11/29/1983	5/11/2011	1/1/1994	11/22/1983
3003923465	LINDRITH B UNIT 26	RIO ARRIBA	NM	24N	3W	9	D	CONOCOPHILLIPS COMPANY	LINDRITH WEST::GALLUP DK	11	10/31/1984		10/31/1984	10/31/1984
3003923609	LINDRITH B UNIT 27	RIO ARRIBA	NM	24N	3W	10	M	CONOCOPHILLIPS COMPANY	LINDRITH WEST::GALLUP DK	11	1/24/1985		1/24/1985	1/24/1985
3003923818	LINDRITH B UNIT 28	RIO ARRIBA	NM	24N	3W	16	C	CONOCOPHILLIPS COMPANY	LINDRITH WEST::GALLUP DK	72		7/17/2006	1/1/1994	10/31/1985
3003923868	LINDRITH B UNIT 29	RIO ARRIBA	NM	24N	3W	16	K	CONOCOPHILLIPS COMPANY	LINDRITH WEST::GALLUP DK	11	3/21/1986		3/21/1986	3/21/1986
3003922278	LINDRITH B UNIT 3	RIO ARRIBA	NM	24N	3W	21	M	CONOCOPHILLIPS COMPANY	LINDRITH WEST::GALLUP DK	71		5/5/2005	1/1/1994	5/15/1980
3003923859	LINDRITH B UNIT 30	RIO ARRIBA	NM	24N	3W	16	I	CONOCOPHILLIPS COMPANY	LINDRITH WEST::GALLUP DK	11	4/1/1986		4/1/1986	4/1/1986
3003923968	LINDRITH B UNIT 31	RIO ARRIBA	NM	24N	3W	21	C	CONOCOPHILLIPS COMPANY	LINDRITH WEST::GALLUP DK	11	4/21/1986		4/21/1986	4/21/1986
3003923924	LINDRITH B UNIT 32	RIO ARRIBA	NM	24N	3W	21	G	CONOCOPHILLIPS COMPANY	LINDRITH WEST::GALLUP DK	11	3/5/1986		3/5/1986	3/5/1986
3003923798	LINDRITH B UNIT 33	RIO ARRIBA	NM	24N	3W	21	I	CONOCOPHILLIPS COMPANY	LINDRITH WEST::GALLUP DK	71		5/12/2005	1/1/1994	12/9/1985
3003923755	LINDRITH B UNIT 35	RIO ARRIBA	NM	24N	3W	9	G	CONOCOPHILLIPS COMPANY	LINDRITH WEST::GALLUP DK	41	12/4/1985	10/6/2011	12/4/1985	12/4/1985
3003922279	LINDRITH B UNIT 4	RIO ARRIBA	NM	24N	3W	34	G	CONOCOPHILLIPS COMPANY	LINDRITH WEST::GALLUP DK	PA	6/20/1980		1/1/1994	6/20/1980
3003923797	LINDRITH B UNIT 40	RIO ARRIBA	NM	24N	3W	15	C	CONOCOPHILLIPS COMPANY	LINDRITH WEST::GALLUP DK	11	3/13/1986		3/13/1986	3/13/1986
3003923840	LINDRITH B UNIT 41	RIO ARRIBA	NM	24N	3W	16	A	CONOCOPHILLIPS COMPANY	LINDRITH WEST::GALLUP DK	11	2/24/1986		2/24/1986	2/24/1986
3003923778	LINDRITH B UNIT 42	RIO ARRIBA	NM	24N	3W	15	K	CONOCOPHILLIPS COMPANY	LINDRITH WEST::GALLUP DK	11	12/22/1985		12/22/1985	12/22/1985
3003923860	LINDRITH B UNIT 44	RIO ARRIBA	NM	24N	3W	21	K	CONOCOPHILLIPS COMPANY	LINDRITH WEST::GALLUP DK	11	4/15/1986		4/15/1986	4/15/1986
3003923873	LINDRITH B UNIT 45	RIO ARRIBA	NM	24N	3W	28	C	CONOCOPHILLIPS COMPANY	LINDRITH WEST::GALLUP DK	11	5/2/1986		5/2/1986	5/2/1986
3003923861	LINDRITH B UNIT 46	RIO ARRIBA	NM	24N	3W	28	A	CONOCOPHILLIPS COMPANY	LINDRITH WEST::GALLUP DK	11	5/15/1986		5/15/1986	5/15/1986
3003922384	LINDRITH B UNIT 5	RIO ARRIBA	NM	24N	3W	21	E	CONOCOPHILLIPS COMPANY	LINDRITH WEST::GALLUP DK	11	9/4/1980		9/4/1980	9/4/1980
3003922424	LINDRITH B UNIT 6	RIO ARRIBA	NM	24N	3W	28	O	CONOCOPHILLIPS COMPANY	LINDRITH WEST::GALLUP DK	11	10/15/1980		10/15/1980	10/15/1980
3003922450	LINDRITH B UNIT 7	RIO ARRIBA	NM	24N	3W	28	G	CONOCOPHILLIPS COMPANY	LINDRITH WEST::GALLUP DK	11	12/9/1980		12/9/1980	12/9/1980
3003925066	LINDRITH B UNIT 78	RIO ARRIBA	NM	24N	2W	6	L	CONOCOPHILLIPS COMPANY	LINDRITH WEST::GALLUP DK	11	8/11/1991		8/11/1991	8/11/1991
3003925105	LINDRITH B UNIT 79	RIO ARRIBA	NM	24N	2W	7	B	CONOCOPHILLIPS COMPANY	LINDRITH WEST::GALLUP DK	11	11/5/1991		1/6/1992	1/6/1992
3003922422	LINDRITH B UNIT 8	RIO ARRIBA	NM	24N	3W	27	M	CONOCOPHILLIPS COMPANY	LINDRITH WEST::GALLUP DK	11	10/25/1980		10/25/1980	11/5/1980
3003925154	LINDRITH B UNIT 82	RIO ARRIBA	NM	24N	2W	8	M	CONOCOPHILLIPS COMPANY	LINDRITH WEST::GALLUP DK	11	3/24/1992		3/24/1992	3/24/1992
3003925178	LINDRITH B UNIT 84	RIO ARRIBA	NM	24N	2W	16	M	CONOCOPHILLIPS COMPANY	LINDRITH WEST::GALLUP DK	72		12/31/2005	1/1/1994	1/1/1994
3003922423	LINDRITH B UNIT 9	RIO ARRIBA	NM	24N	3W	27	O	CONOCOPHILLIPS COMPANY	LINDRITH WEST::GALLUP DK	11	11/4/1980		11/4/1980	11/4/1980
NO API	LINDRITH WATER HOLE 1	RIO ARRIBA	NM	24N	3W	10		BURLINGTON RESOURCES O&G	UNK::SHALLOW	11	8/17/1954		8/17/1954	

PRODUCTION STATUS
11 - FLOWING WELL 71 - PERM ABANDON ZONE
41 - SHUT IN 72 - PERM ABANDON WELL
59 - SOLD PA - PLUG ABANDON
61 - TEMP ABANDON PS - PERM SHUT-IN