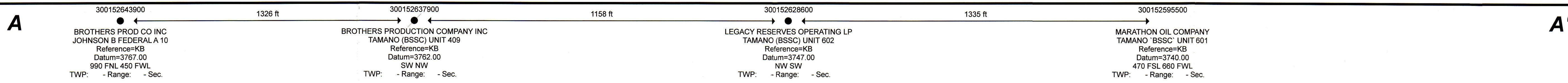


Tamano 11 MD Fed Com 1H

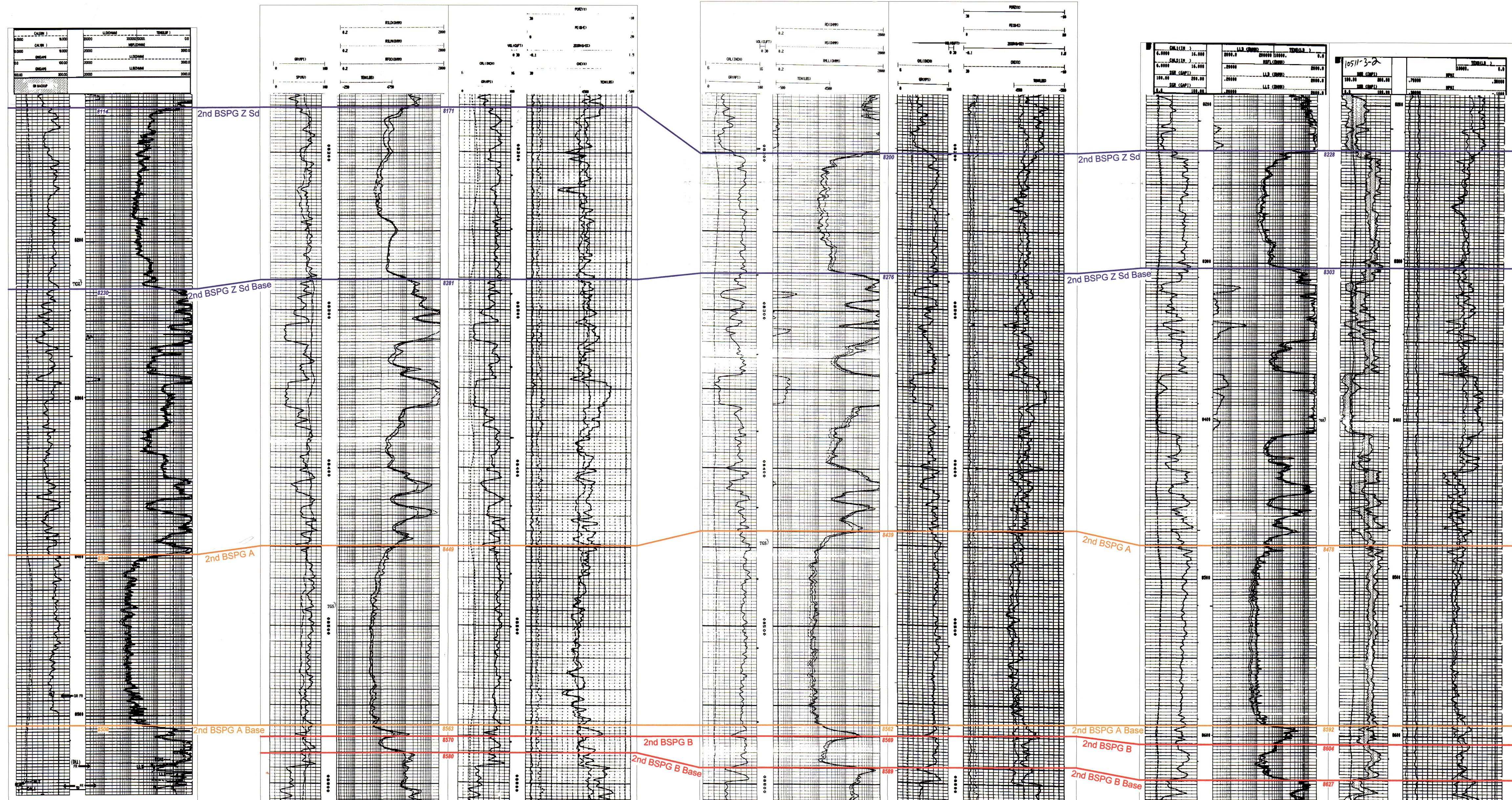


11 D

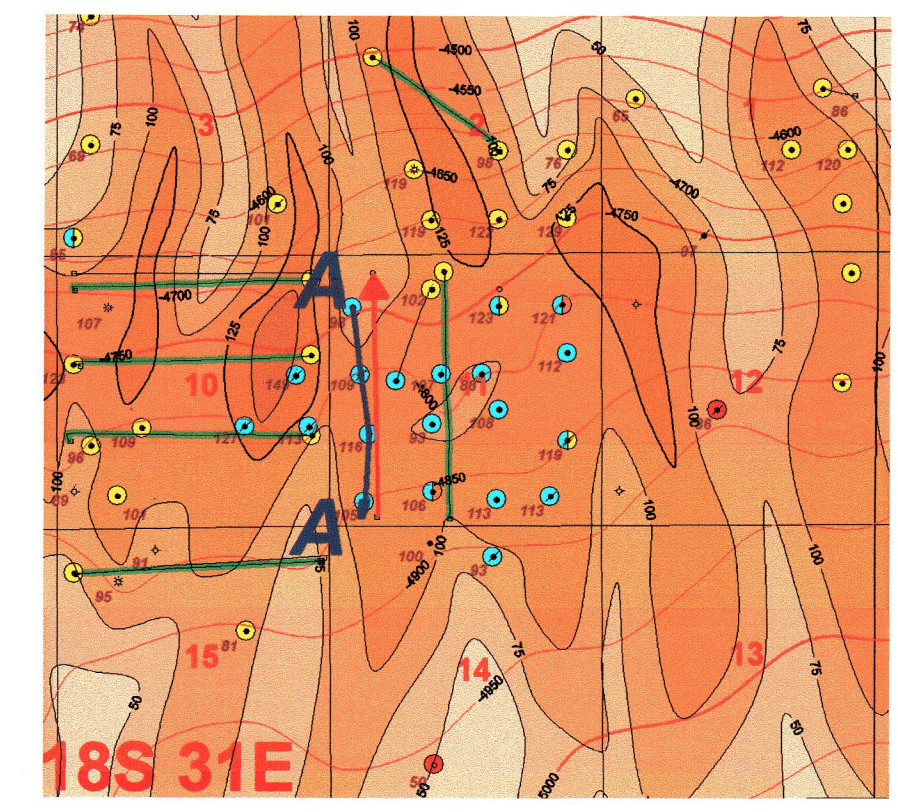
11 E

11 L

11 M



Upper 2nd BSPG Sand



Isopach 2nd BSPG Lower Sand (C.I. 25')
Structure Base of 2nd BSPG Lower Sd (C.I. 50')

Lower 2nd BSPG Sand

Horizontal Target

Oil Conservation Division
Case No. _____
Exhibit No. 7

MOC Mewbourne Oil Company

Tamano 11 MD Fed 1H
Cross Section Exhibit
Isopach Lower 2nd BSPG Sand (C.I. 25')
Structure Base of 2nd BSPG Lower Sd (C.I. 50')

6/30/2014	Edley County	New Mexico
11/18/2014	Scale: 2.5"=100' H Scale: 1"=100'	N Class

TD=8556.00
Cum Oil All Zones: 14 bbls
Cum Gas All Zones: 0.0 BCF
Cum Water All Zones: 46 bbls

TD=8816.00
Cum Oil All Zones: 132 bbls
Cum Gas All Zones: 0.7 BCF
Cum Water All Zones: 390 bbls

TD=8670.00
Cum Oil All Zones: 207 bbls
Cum Gas All Zones: 0.5 BCF
Cum Water All Zones: 1621 bbls

TD=9770.00
Cum Oil All Zones: 33 bbls
Cum Gas All Zones: 0.0 BCF
Cum Water All Zones: 3.1 bbls

* NO PRODUCTION
LAST 5 YEARS

Shogant-Alics
7A-Q4-Cr - Perf 2nd BS. Carbonate
+ TAMANO - 8017-8880 78801
13 - "8017-8022" 4112019
942430 8046-8880
8/11/2009 - 7998-8014
4/11/2009 - 5916-6075

Perf 2nd BS. Carbonate
Perf 8048-8130
P&A

Perf 2nd BS. Carbonate
8056-8178
8/11/2009 - 41112004
20716 B0
188301 April '14

Perf 2nd BS. Carbonate
- 8072-8120
- 8120-8170
- 8160-8195
- 8215-8228
- 7963-71,7474-81,