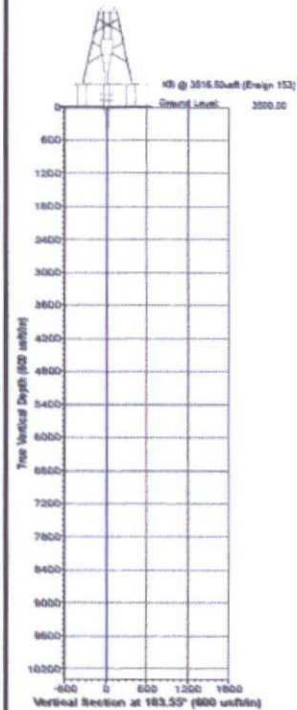


Gamma Ridge 5H: API 30-025-42059



Project: Lea County NM (NAD27 NME)
 Site: Gamma Ridge 14-24-34
 Well: #5H
 Wellbore: WB1
 Design: Plan #3 06-24-14
 Rig: Ensign 153



WELL DETAILS									
-N/G	-E/W	Nothing	Drived Level	Ending	Latitude	Longitude			
0.00	0.00	445260.00	776841.00	3500.00	32° 12' 25.45768 N	103° 28' 32.85458 W			

SECTION DETAILS											
Sec	MD	Inc	Azi	TVD	-N/G	-E/W	Diag	TPlace	VEast	Target	Annotation
1	0.00	0.00	0.00	0.00	0.00	0.00	0.00	0.00	0.00	0.00	
2	11628.54	0.00	0.00	11628.54	0.00	0.00	0.00	0.00	0.00	0.00	KCP, 12°/100' Build
3	12378.54	90.00	183.55	12106.00	-076.55	-28.61	12.00	183.55	477.48		LP, 1500 90° Inc, 183.55° Azim
4	18578.07	90.00	183.55	12106.00	-468.00	-280.00	0.00	0.00	4677.00		TD at 18578.07 MD

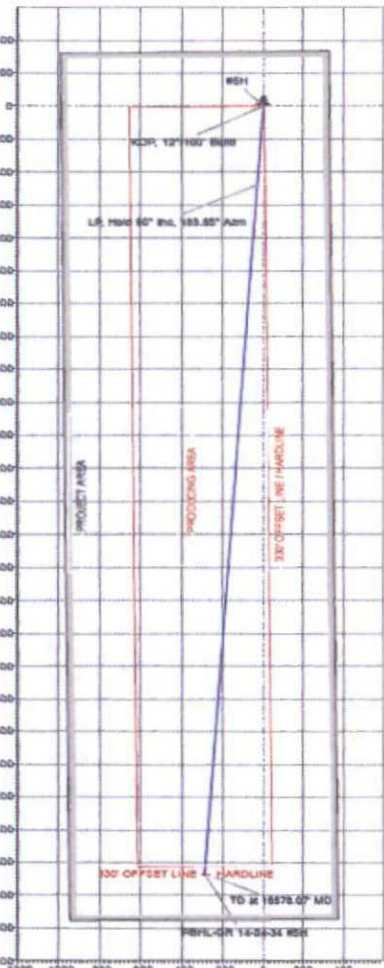
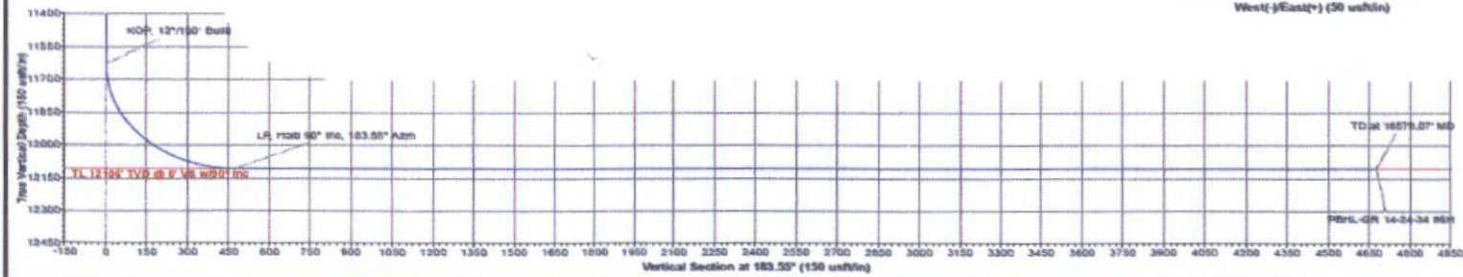
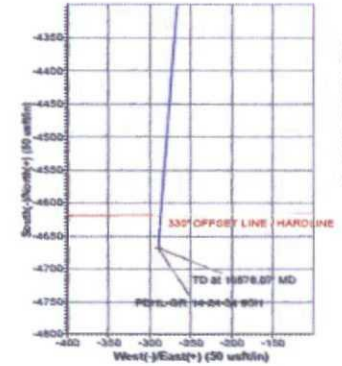
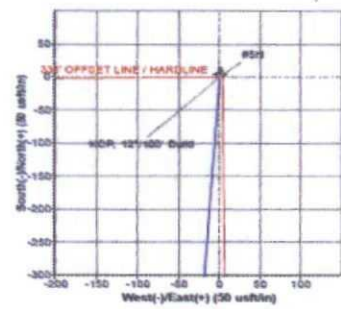
DESIGN TARGET DETAILS									
Name	TVD	-N/G	-E/W	Nothing	Ending	Latitude	Longitude	Shape	
PBR1-QR 14-24-34 e5H1	12106.00	-498.00	-280.00	441592.00	775931.00	32° 12' 36.28981 N	103° 28' 32.85977 W	Point	

LEGEND

— Plan #3 06-24-14

Map System: US State Plane 1927 (Exact solution)
 Datum: NAD 1927 (NADCON CONUS)
 Exposure: Clarke 1866
 Zone Name: New Mexico East 3001
 Local Origin: Well WB1, Grid North
 Latitude: 32° 12' 25.45768 N
 Longitude: 103° 28' 32.85458 W
 Grid East: 776841.00
 Grid North: 445260.00
 Scale Factor: 1.000
 Geomagnetic Model: IGRF2010_14
 Sample Date: 24-Jun-14
 Magnetic Declination: 7.15°
 Dip Angle from Horizontal: 68.13°
 Magnetic Field Strength: 48327
 To convert a Magnetic Direction to a Grid Direction, Add 0.48°
 To convert a Magnetic Direction to a True Direction, Add 7.15° East

FORMATION TOP DETAILS					
TVD@h	MD@h	Formation	TL	TVD @ 0° VS @ 90° Inc	Dip@h
12106.00	12378.54	TL 12150° TVD @ 0° VS @ 90° Inc	0.00	183.55	183.55



BEFORE THE OIL CONVERSION DIVISION
 Santa Fe, New Mexico
 Exhibit No. 12
 Submitted by: CHEVRON U.S.A., INC.
 Hearing Date: September 17, 2014