

USA 20
NMNM-116575

21

22

23

Oil Conservation Division

Case No. **15147**

Exhibit No. **1**

29

28

27

26

USA NMLC
061936

North Paduca-Deleware Pool

USA NMNM
054031

USA NMLC
061936

USA NMNM
113964

ST OF NM
VB 1172

ST OF NM
VB 1172

USA NMNM
054031

USA NMLC
061936

USA NMLC
061863A

USA
NMLC
061863A

USA NMLC
061863A

USA NMNM
054031

USA
NMLC
061936

3 USA NMLC
061936

USA NMNM
054031

USA NMLC
061936A

USA
NMLC
061936

USA
NMLC
061936

USA NMLC
061936 USA NMLC
061936

USA NMLC
061873B

USA
NMLC
061936A

USA NMLC
061936

USA
NMLC
061936A

USA
NMLC
061936A

USA
NMLC
061936A

USA
NMLC
061936A

USA
NMLC
061936

USA NMLC
061873B

USA
NMLC-062300

USA NMLC
061869

USA
NMLC-062300
USA
NMLC-062300 USA
NMLC-062300

EAST BRUNSON-ELLENBURGER POOL
Lea County, New Mexico

Order No. R-3329, November 1, 1967, Establishing Pool, as Amended by Order No. R-3455, August 1, 1968.

T-22-S, R-37-E SW/4 Sec. 24; NW/4 Sec. 25.

EAST BRUNSON-GRANITE WASH POOL
Lea County, New Mexico

Order No. R-3329, November 1, 1967, Establishing Pool, as Amended by Order No. R-3455, August 1, 1968; Order No. R-4464, February 1, 1973; Order No. R-4566, July 1, 1973.

Pool abolished by Order No. R-4604, August 1, 1973.

VACUUM-MIDDLE PENNSYLVANIAN POOL
Lea County, New Mexico

Order No. R-3329, November 1, 1967, Establishing Pool, as Amended by Order No. R-3411, June 1, 1968; Order No. R-3505, October 1, 1968; Order No. R-4086, February 1, 1971; Order No. R-9194, June 1, 1990; Order No. R-10419, August 1, 1995.

T-17-S, R-34-E SE/4 Sec. 11; Sec. 13; E/2 Sec. 14; E/2 Sec. 24; NE/4 Sec. 25.

T-17-S, R-35-E W/2 Sec. 30; N/2 Sec. 31.

CABIN LAKE-STRAWN POOL
Eddy County, New Mexico

Order No. R-3342, December 1, 1967, Establishing Pool, as Amended by Order No. R-4821, August 1, 1974; Order No. R-5667, April 1, 1978.

T-22-S, R-30-E S/2 SW/4 Sec. 1; S/2 SE/4 Sec. 2; W/2 NE/4 Sec. 11.

RED LAKE ATOKA-MORROW GAS POOL
(Formerly East Atoka Atoka-Morrow Gas Pool)
(Formerly East Atoka-Morrow Gas Pool)
Eddy County, New Mexico

Order No. R-3342, December 1, 1967, Establishing Pool, as Amended by Order No. R-6170, November 1, 1979; Order No. R-7502, May 1, 1984; Order No. R-7555, July 1, 1984; Order No. R-8522, October 1, 1987; Order No. R-8665, June 1, 1988; Order No. R-8969, August 1, 1989; Order No. R-9326, November 1, 1990; Order No. R-9473, April 1, 1991; Order No. R-9709, September 1, 1992; Order No. R-10042, January 1, 1994; Order No. R-10962, March 1, 1998; Order No. R-12420, October 1, 2005; Order No. R-12619, September 1, 2006.

T-18-S, R-27-E Secs. 13, 14; S/2 Sec. 15; Sec. 16; E/2 Sec. 16; E/2 Sec. 17; N/2 Sec. 21; Secs. 22, 23, 24; N/2 Sec. 26; N/2 Sec. 27; E/2 Sec. 28.

SOUTH OSUDO-MORROW GAS POOL
Lea County, New Mexico

Order No. R-3342, December 1, 1967, Establishing Pool, as Amended by Order No. R-3932, April 1, 1970; Order No. R-5252, September 1, 1976; Order No. R-9271, September 1, 1990; Order No. R-12046, November 1, 2003; Order No. R-12317, April 1, 2005; Order No. R-12387, July 1, 2005; Order No. R-12449, December 1, 2005; Order No. R-12531, April 1, 2006; Order No. R-12600, August 1, 2006.

T-21-S, R-35-E SW/4 and Lots 11, 12, 13 and 14 Sec. 1; S/2 Sec. 4; Sec. 9; W/2 Sec. 10; Sec. 15; S/2 Sec. 16; Sec. 21; N/2 Sec. 28.

SOUTH CORBIN-WOLFCAMP POOL
Lea County, New Mexico

Order No. R-3342, December 1, 1967, Establishing Pool, as Amended by Order No. R-3367, February 1, 1968; Order No. R-3438, July 1, 1968; Order No. R-5987, May 1, 1979; Order No. R-6368, July 1, 1980; Order No. R-6657, May 1, 1981; Order No. R-7114, November 1, 1982; Order No. R-8075, December 1, 1985; Order No. R-8340, November 1, 1986; Order No. R-8461, July 1, 1987; Order No. R-8668, July 1, 1988; Order No. R-8696, August 1, 1988; Order No. R-8901, April 1, 1989; Order No. R-9095, January 1, 1990; Order No. R-9120, March 1, 1990; Order No. R-9271, September 1, 1990; Order No. R-9345, November 1, 1990; Order No. R-9472, April 1, 1991; Order No. R-9544, July 1, 1991; Order No. R-9585, October 1, 1991; Order No. R-9685, July 1, 1992; Order No. R-9723, October 1, 1992; Order No. R-9843, March 1, 1993; Order No. R-9937, August 1, 1993; Order No. R-10091, April 1, 1994; Order No. R-10776, March 1, 1997; Order No. R-10795, May 1, 1997.

T-18-S, R-32-E E/2 Sec. 24; N/2 and SW/4 Sec. 25.

T-18-S, R-33-E S/2, NE/4 Sec. 5; S/2 Sec. 7; Sec. 8; E/2 Sec. 9; SW/4 Sec. 15; Secs. 16, 17, 18; N/2, SE/4 Sec. 19; Secs. 20, 21; NW/4 Sec. 22; W/2, NE/4 Sec. 28; E/2 Sec. 29; NW/4 Sec. 30; W/2, SE/4 Sec. 33.

EAST BRUNSON-MCKEE POOL
Lea County, New Mexico

Order No. R-3355, January 1, 1968, Establishing Pool, as Amended by Order No. R-3402, May 1, 1968; Order No. R-3455, August 1, 1968; Order No. R-3530, November 1, 1968; Order No. R-4540, June 1, 1973; Order No. R-7858, April 1, 1985.

T-22-S, R-37-E SE/4 Sec. 23; SW/4 Sec. 24; NW/4 Sec. 25; NE/4 Sec. 26.

NORTH MESCALERO-SAN ANDRES POOL
Lea County, New Mexico

Order No. R-3367, February 1, 1968, Establishing Pool.

T-10-S, R-32-E NE/4 Sec. 1.

NORTH PADUCA-DELAWARE POOL
Lea County, New Mexico

Order No. R-3381, March 1, 1968, Establishing Pool, as Amended by Order No. R-3780, July 1, 1969.

T-24-S, R-32-E SE/4 Sec. 33; SW/4 Sec. 34.

T-25-S, R-32-E NE/4 Sec. 4.

POKER LAKE-MORROW GAS POOL
Eddy County, New Mexico

Order No. R-3381, March 1, 1968, Establishing Pool.

T-24-S, R-31-E S/2 Sec. 28.

SCANLON-STRAWN GAS POOL
Eddy County, New Mexico

Order No. R-3381, March 1, 1968, Establishing Pool, as Amended by Order No. R-10124, June 1, 1994.

T-1-S, R-29-E S/2 Sec. 32; E/2, SW/4 Sec. 33.

District I
 1025 N. French Dr., Hobbs, NM 88240
 Phone: (575) 393-6161 Fax: (575) 393-0730
 District II
 811 S. First St., Artesia, NM 88210
 Phone: (575) 748-1283 Fax: (575) 748-0720
 District III
 1000 Rio Bravo Road, Aztec, NM 87410
 Phone: (505) 334-6178 Fax: (505) 334-6170
 District IV
 1270 S. St. Francis Dr., Santa Fe, NM 87505
 Phone: (505) 476-3460 Fax: (505) 476-3462

State of New Mexico
 Energy, Minerals & Natural Resources Department
OIL CONSERVATION DIVISION
 1220 South St. Francis Dr.
 Santa Fe, NM 87505

Form C-102
 Revised August 1, 2011
 Submit one copy to appropriate
 District Office

* ☒ AMENDED REPORT

WELL LOCATION AND ACREAGE DEDICATION PLAT

¹ API Number 30-025-40044		² Pool Code 49490		³ Pool Name PADUCA, DELAWARE, NORTH	
⁴ Property Code 38384		⁵ Property Name TRIONYX "6" FEDERAL		⁶ Well Number 4H	
⁷ OGRID No. 6137		⁸ Operator Name DEVON ENERGY PRODUCTION COMPANY, L.P.		⁹ Elevation 3446.6	

" Surface Location

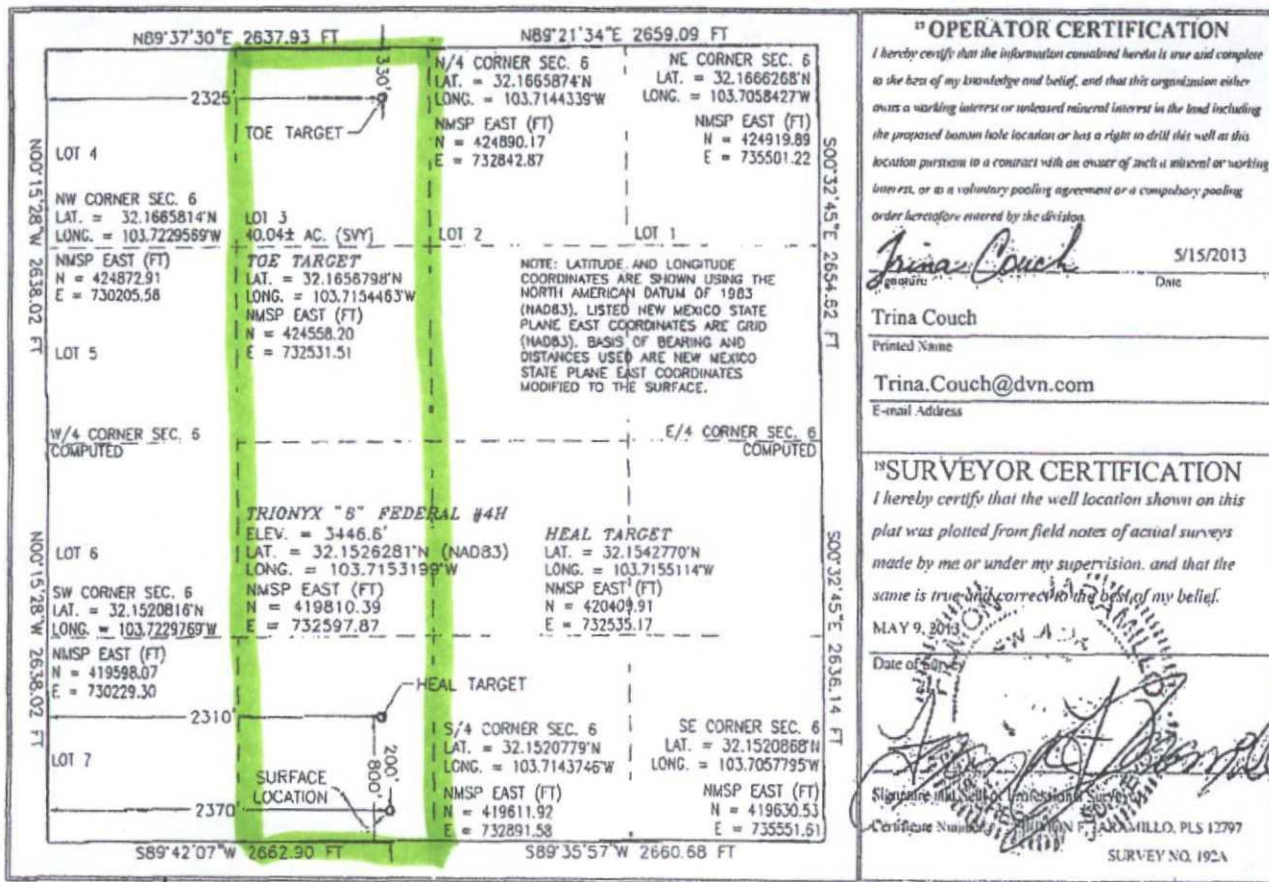
UL or lot no.	Section	Township	Range	Lot Idn	Feet from the	North/South line	Feet from the	East/West line	County
N	6	25 S	32 E		200	SOUTH	2370	WEST	LEA

" Bottom Hole Location If Different From Surface

UL or lot no.	Section	Township	Range	Lot Idn	Feet from the	North/South line	Feet from the	East/West line	County
3	6	25 S	32 E		330	NORTH	2325	WEST	LEA

¹¹ Dedicated Acres	¹² Joint or Infill	¹³ Consolidation Code	¹⁴ Order No.

No allowable will be assigned to this completion until all interests have been consolidated or a non-standard unit has been approved by the division.



* Amended

JUN 18 2013