

**BEFORE THE OIL CONSERVATION DIVISION**

**APPLICATION OF WPX ENERGY PRODUCTION, LLC  
FOR APPROVAL OF THE NORTHWEST LYBROOK UNIT  
RIO ARRIVA AND SAN JUAN COUNTIES, NEW MEXICO  
CASE NO. 15201**

---



R 8 W

R 7 W

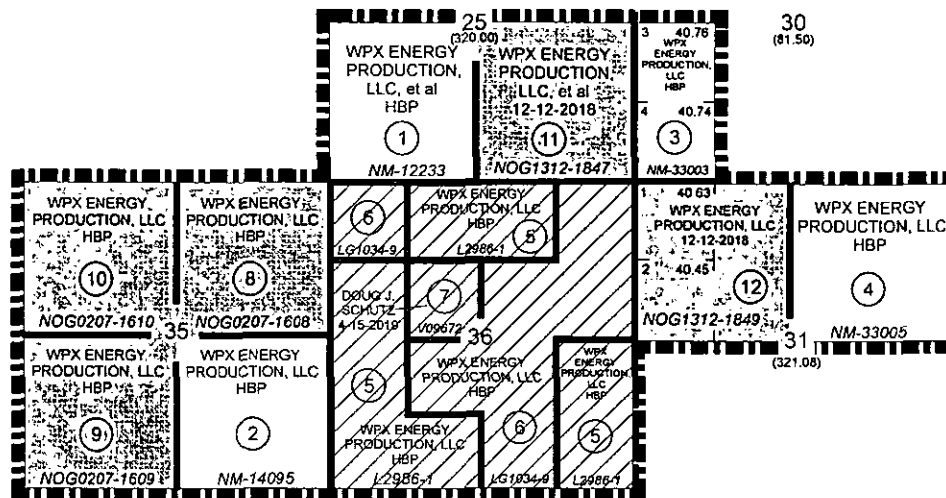
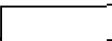

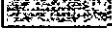
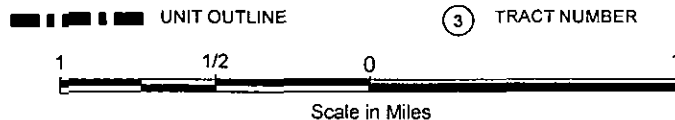
T  
24  
NSAN JUAN  
COUNTYRIO ARRIBA  
COUNTY

EXHIBIT "A"

	ACREAGE	PERCENTAGE
	FEDERAL LANDS	561.50
	STATE LANDS	640.00
	ALLOTTED LANDS	801.08
	TOTALS	2,002.58
		100.00%

## NORTHWEST LYBROOK UNIT AREA

RIO ARRIBA &amp; SAN JUAN COUNTIES, NEW MEXICO



NOTE: UNLESS OTHERWISE NOTED HEREIN THE SECTIONS  
ON THIS PLAT CONTAIN 640.00 ACRES

WPX ENERGY PRODUCTION, LLC  
TULSA, OKLAHOMA

9-9-2014

BEFORE THE OIL CONVERSION  
DIVISION

Santa Fe, New Mexico

Exhibit No. 1

Submitted by: WPX ENERGY PRODUCTION

Hearing Date: September 17, 2014