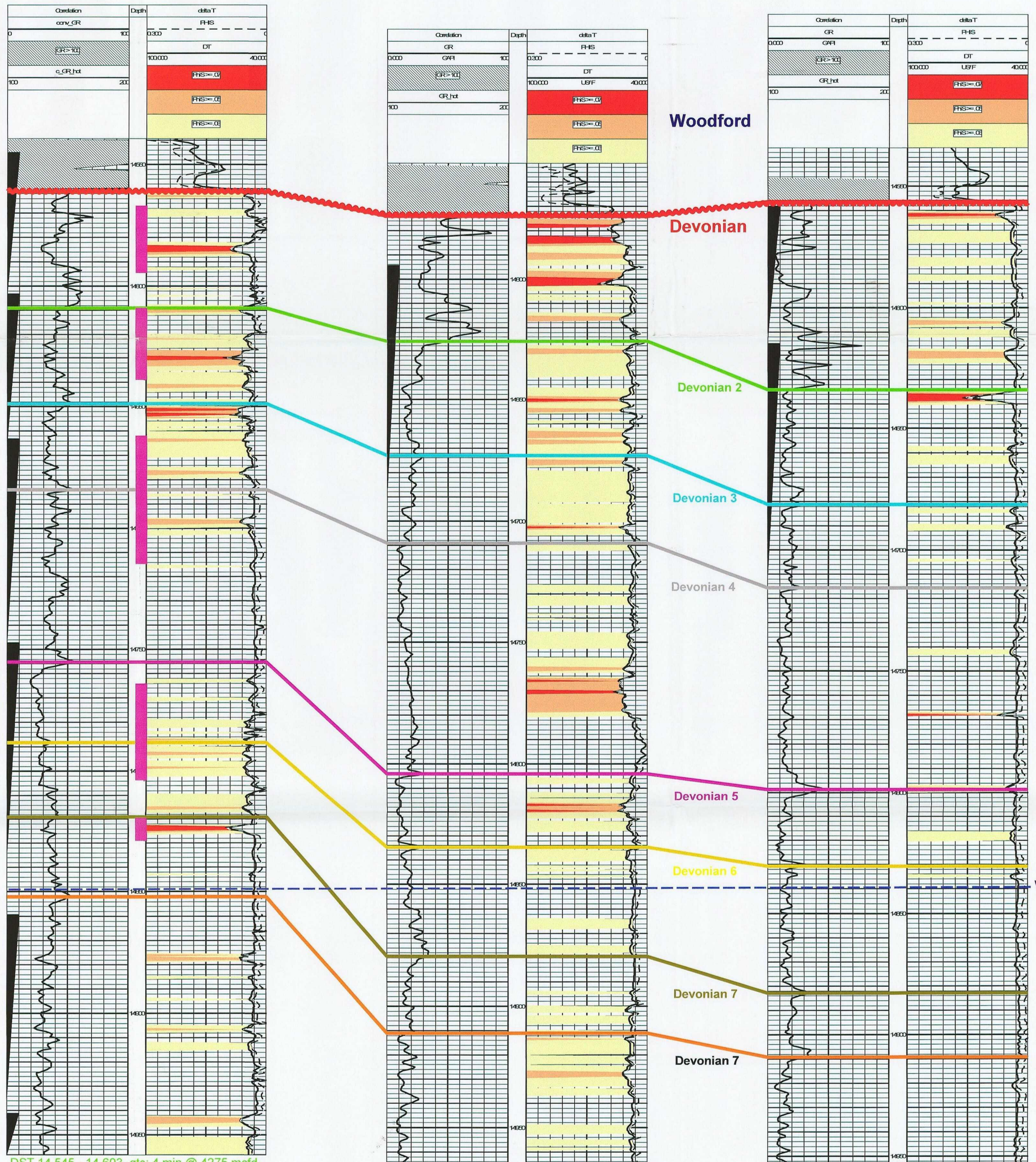


CONTINENTAL OIL CO
 BELL LAKE UNIT A/C- 6
 Comp Date=6/26/1960
 TWP: 23 S - Range: 34 E - Sec. 6
 660 FSL/1980 FEL
 30025084830000
 Datum=3485

CONOCO INCORPORATED
 NORTH BELL LAKE FED 3
 Comp Date=1/12/1996
 TWP: 23 S - Range: 34 E - Sec. 6
 1930 FNL/660 FEL
 30025330770000
 Datum=3488

AMERADA HESS CORP
 NORTH BELL LAKE FED 2
 Comp Date=5/19/1995
 TWP: 23 S - Range: 34 E - Sec. 5
 1100 FSL 1500 FWL
 30025326720000
 Datum=3476



BEFORE THE
 STATE ENGINEER
 State of New Mexico
 License No. 2003

Original Gas
 Water Contact

- Devonian Perf
- PhiS > = .03
- PhiS > = .05
- PhiS > = .07

DST 14,545 - 14,603, gts: 4 min @ 4275 mcf/d, ISIP 6400, no FSIP
 DST 14,603 - 14,665, gts: 3 min @ 9398 mcf/d, 60: FSIP 6400
 DST 14,663 - 14,747, rec 180' gcm, 7600' mud, gts: 4 min @ 1047 mcf/d, no SIP
 DST 14,747 - 14,835, rec 2 bbl muc, 3 bbl condensate, 2 gal oil gts: 3 min @ 5740 mcf/d, 60" FSIP 5800
 DST 14,859 - 14,935, rec 1833' mud, 3752' salt wtr, packer failed no SIP
 Devonian Completion
 Pf 14,568 - 14,594, 14,609 - 14,639, 14,662 - 14,714, 14,764 - 14,804, 14, 819 - 14,829
 CAOF 30.5 mmcfpd
 Cumulative Oil: 61,441 bo
 Cumulative Gas: 31.1 bcf

DST 14,594 - 14,692, flowed gas & salt water to surface: 4.6 mmcf/d + 1344 bw/d, FSIP 6035
 No Devonian Completion
 Devonian Bottomhole Pressure Data:
 BHP (psi)
 Jan-96 6035
 Ellenberger Completion
 Pf 17,340 - 17,540
 IP: 6187 MCFD, 65 bbl water
 Cumulative Oil: 909 bo
 Cumulative Gas: 2.4 bcf

DST 14,558 - 14,612, rec 20 bbl wb 8 bbl df 5 bbl frm wtr, FSIP 5872
 DST 14,615 - 14,712, rec 27 bbl wb 4 bbl df 96 bbl frm wtr, FSIP 6000
 No Devonian Completion
 Devonian Bottomhole Pressure Data:
 BHP (psi)
 May-95 5908
 Ellenberger Completion
 Pf 17,260 - 17,290 (Elbg)
 IP: 3800 MCFD, 204 bbl water
 Cumulative Oil: 455 bo
 Cumulative Gas: 1.1 bcf
 Recent Morrow Recompletion

Last Devonian Production 2003
 Devonian Bottomhole Pressure Data:
 BHP (psi)
 June-60 6400
 Aug-79 6039
 Oct-83 6080
 Sep-86 6014
 Oct-95 4047
 Sep-97 3736
 Jul-98 3820

devon PERMIAN BASIN

Southeast New Mexico Area
 Chaves, Eddy, and Lea Counties, New Mexico

**Structural Cross Section
 North Bell Lake Devonian
 Showing Inconsistent Vertical and
 Lateral Porosity Development in
 the Devonian
 T23 S - R 34 E**

Geologist: Steve Hulke Date: 8/13/03