

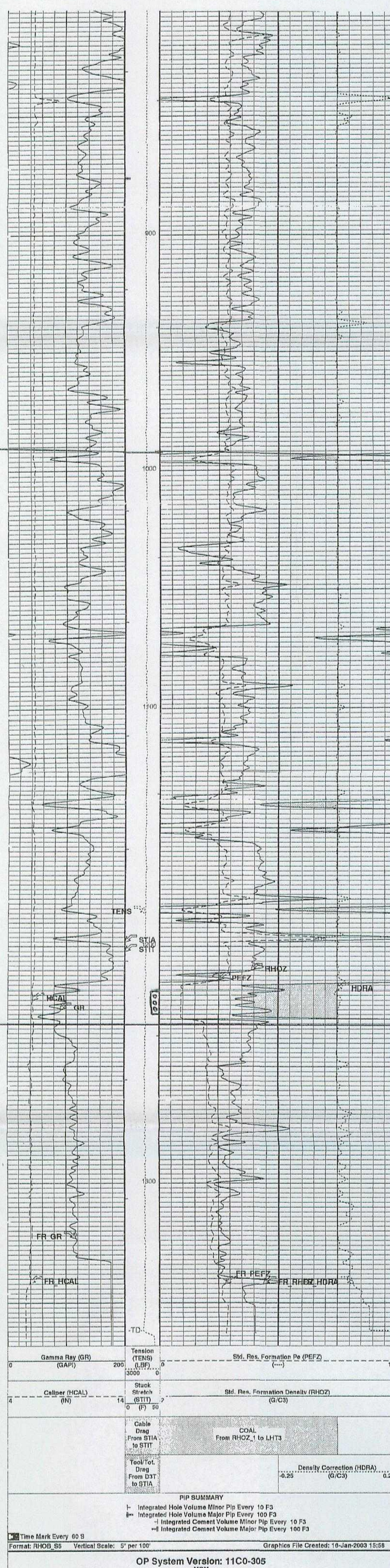


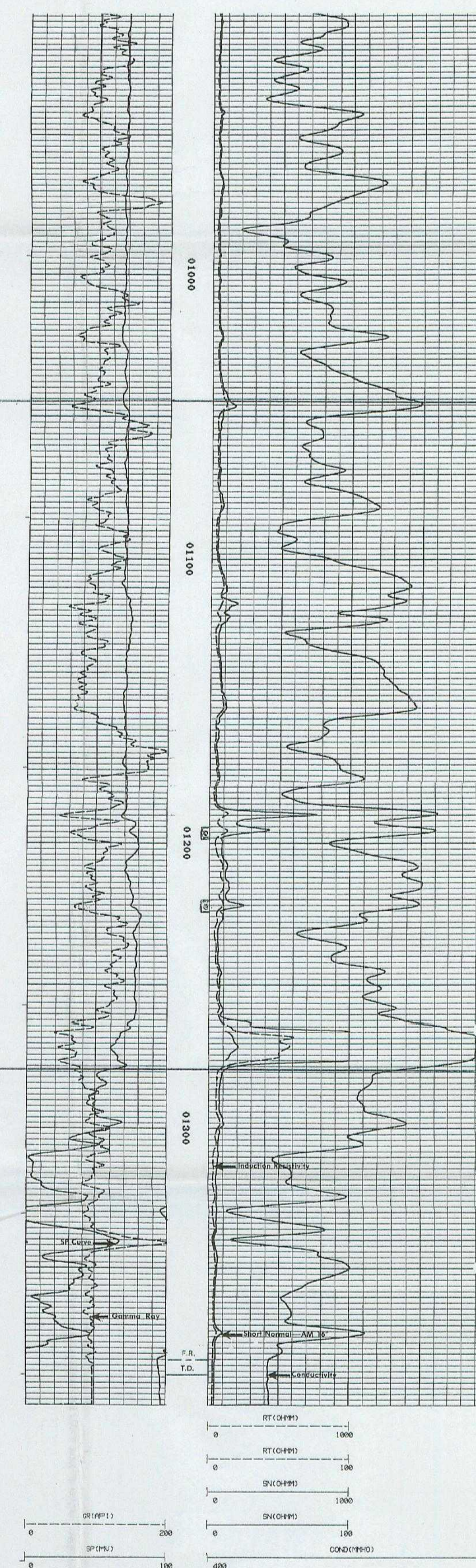
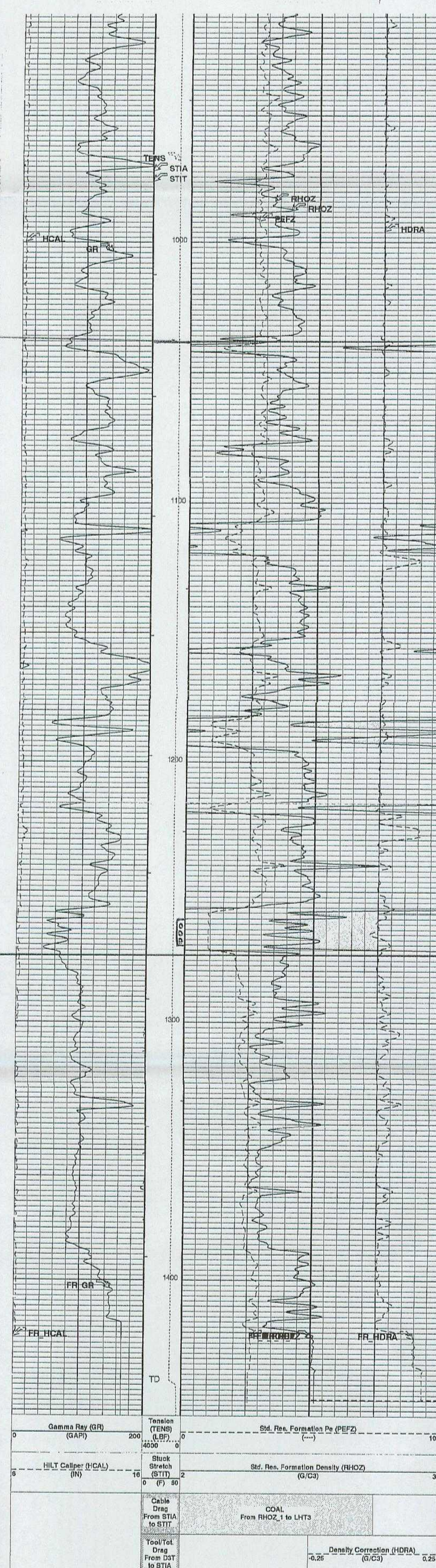
North

[illegible][illegible]

	<h1 style="text-align: center;">Induction Electrolog</h1>		
THE NO. PH-6413	COMPANY SIMMONS ENGINEERING CONSULT.		Other Service CDL/CH/GR
	WELL RIEKY NO. 1		
	COUNTRY GALLEGOS PLATLAND		
	COUNTY SAN JUAN STATE		
	LOCATION 750' PNL, 875' PNL		
	REC 1B	CEN 26N	LIN 31W
Horizontal Datum N	Elevation 5	ELEV 6035	Elev. 6035
Log Acquired From 1	S. F. 1	Above Waterline CDL	GR 6035
Printing Produced From 1			



Pictured Cliffs Sandstone



Ricky Wells Cross Section

BEFORE THE OIL CONSERVATION DIVISION
Santa Fe, New Mexico
Case No. 13358 Exhibit No. 4
Submitted by:
COLEMAN OIL & GAS, INC.
Hearing Date: September 22, 2005