

District I
1625 N. French Dr., Hubbs, NM 88240
Phone: (575) 393-6161 Fax: (575) 393-0720
District II
811 S. First St., Artesia, NM 88210
Phone: (575) 748-1283 Fax: (575) 748-9720
District III
1000 Rio Brizos Road, Aztec, NM 87410
Phone: (505) 334-6178 Fax: (505) 334-6170
District IV
1220 S. St. Francis Dr., Santa Fe, NM 87505
Phone: (505) 476-3460 Fax: (505) 476-3462

State of New Mexico
Energy, Minerals & Natural Resources Department
ARTESIA DISTRICT
OIL CONSERVATION DIVISION
1220 South St. Francis Dr.
Santa Fe, NM 87505

Form C-102
Revised August 1, 2011
Submit one copy to appropriate
District Office

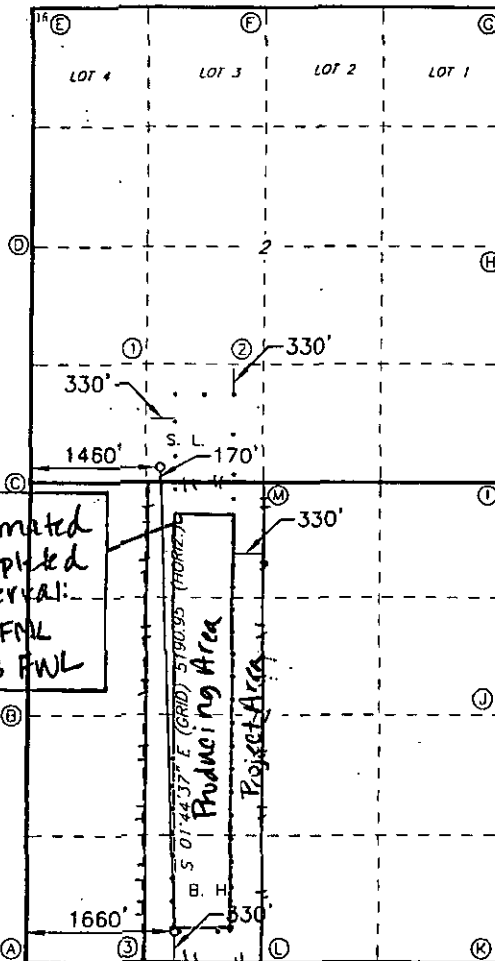
RECEIVED

AMENDED REPORT

WELL LOCATION AND ACREAGE DEDICATION PLAT

1 API Number 30-015-43305		2 Pool Code 97565		3 Well Name N Seven Rivers; Glorieta Yeso					
4 Property Code		5 Property Name BONE YARD 11 FEE						6 Well Number 12H	
7 GRID NO. 229137		8 Operator Name COG OPERATING, LLC.						9 Elevation 3398'	
10 Surface Location									
UL or lot no.: N	Section: 2	Township: 20S	Range: 25E	Lot Idn	Feet from the 170	North/South line SOUTH	Feet From the 1460	East/West line WEST	County EDDY
11 Bottom Hole Location If Different From Surface									
UL or lot no. N	Section 11	Township 20S	Range 25E	Lot Idn	Feet from the 330	North/South line SOUTH	Feet from the 1660	East/West line WEST	County EDDY
12 Dedicated Acres 160		13 Joint or Infill		14 Consolidation Code		15 Order No.			

No allowable will be assigned to this completion until all interest have been consolidated or a non-standard unit has been approved by the division.



16 GEODETIC DATA
NAD 27 GRID - NM EAST
SURFACE LOCATION
N 580433.8 - E 461347.5
LAT: 32.59565514° N
LONG: 104.45883887° W
BOTTOM HOLE
N 575246.5 - E 461505.4

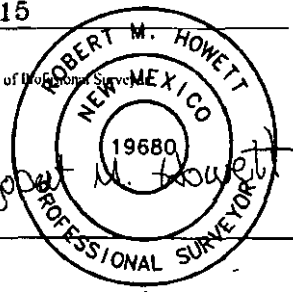
17 CORNER DATA
NAD 27 GRID - NM EAST
A: FOUND BRASS CAP "1947"
N 574906.7 - E 459843.2
B: FOUND BRASS CAP "1947"
N 577592.0 - E 459864.9
C: FOUND BRASS CAP "1947"
N 580276.9 - E 459887.3
D: FOUND BRASS CAP "1947"
N 582882.5 - E 459896.7
E: FOUND BRASS CAP "1947"
N 585504.1 - E 459905.9
F: FOUND BRASS CAP "1947"
N 585511.7 - E 462548.4
G: FOUND BRASS CAP "1947"
N 585520.8 - E 465190.9
H: FOUND BRASS CAP "1947"
N 582874.9 - E 465184.7
I: FOUND BRASS CAP "1947"
N 580229.1 - E 465177.8
J: FOUND BRASS CAP "1947"
N 577584.2 - E 465171.8
K: CALCULATED CORNER
N 574939.6 - E 465164.4
L: FOUND BRASS CAP "1947"
N 574922.5 - E 462503.3
M: FOUND BRASS CAP "1947"
N 580253.1 - E 462532.6
1: CALCULATED POINT
N 581572.8 - E 461214.3
2: CALCULATED POINT
N 581565.9 - E 462538.5
3: CALCULATED POINT
N 574914.6 - E 461173.3

17 OPERATOR CERTIFICATION
I hereby certify that the information contained herein is true and complete to the best of my knowledge and belief, and that this organization either owns a working interest or unleased mineral interest in the land including the proposed bottom hole location or has a right to drill this well at this location pursuant to a contract with an owner of such a mineral or working interest, or to a voluntary pooling agreement or a compulsory pooling order heretofore entered by the division.

Signature: [Signature] Date: 8-13-15
Printed Name: Kelly J. Holly
E-mail Address: kholly@concho.com

18 SURVEYOR CERTIFICATION
I hereby certify that the well location shown on this plat was plotted from field notes of actual surveys made by me or under my supervision, and that the same is true and correct to the best of my belief.

Date of Survey: 8-5-2015
Signature and Seal of Professional Surveyor: [Signature]
Certificate Number: 19680



RRC - Firm No.: TX 101938

BEFORE THE OIL CONSERVATION
DIVISION
Santa Fe, New Mexico
Exhibit No. 2
Submitted by: COG OPERATING LLC
Hearing Date: October 1, 2015

8/24/15
JAC