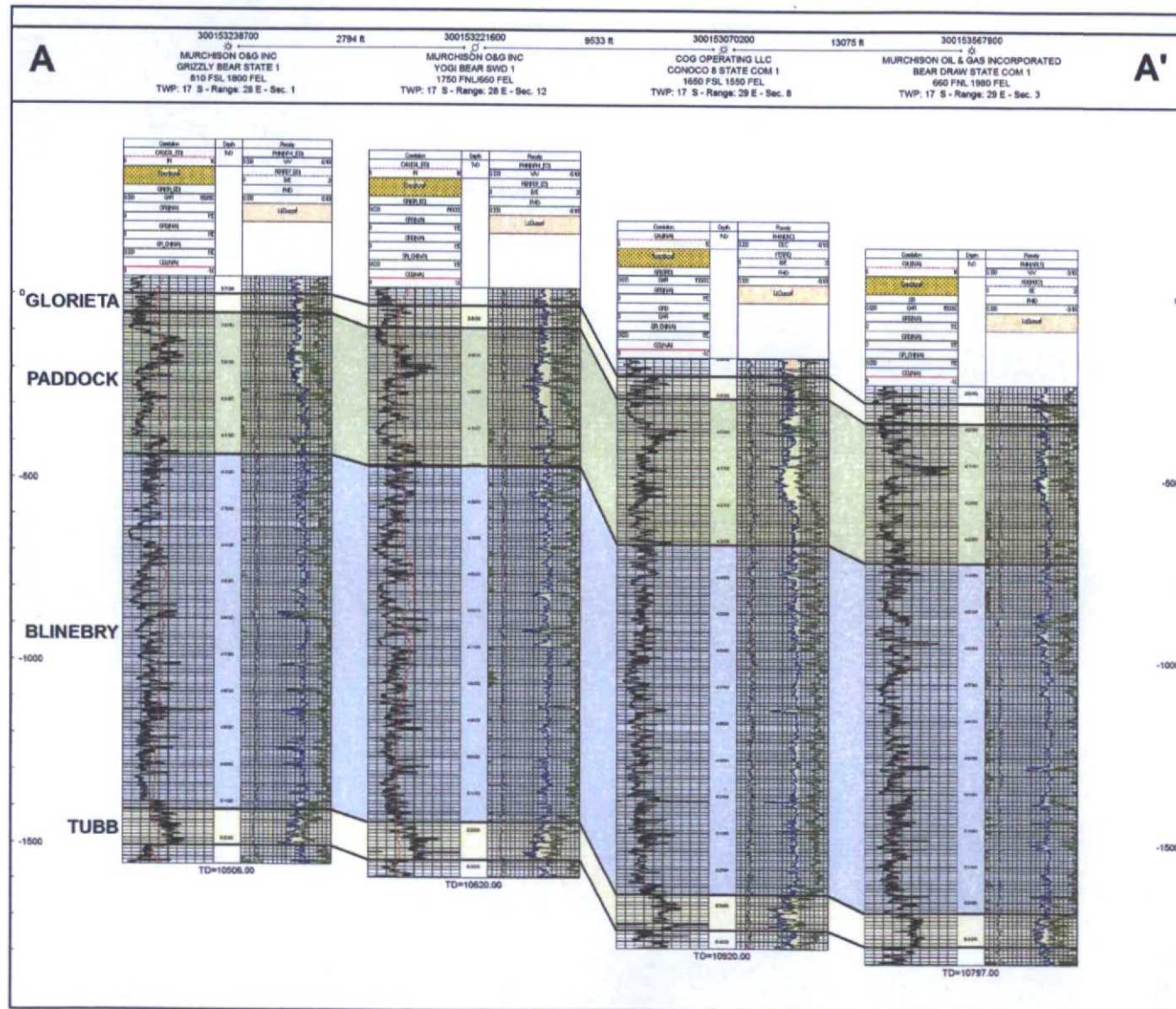


Bose Ikard Structural Cross Section





BEFORE THE OIL CONVERSION
 DIVISION
 Santa Fe, New Mexico
 Exhibit No. 8
 Submitted by: COG OPERATING LLC
 Hearing Date: October 1, 2015

300153238700

MURCHISON O&G INC
GRIZZLY BEAR STATE 1
810 FSL 1800 FEL
TWP: 17 S - Range: 28 E - Sec. 1

300153221600
MURCHISON O&G INC
YOGI BEAR SWD 1
1750 FNL/660 FEL
TWP: 17 S - Range: 28 E - Sec. 12

300153070200

 COG OPERATING LLC
 CONOCO 8 STATE COM 1
 1650 FSL 1550 FEL
 TWP: 17 S - Range: 29 E - Sec. 8

300153567900
 
MURCHISON OIL & GAS INCORPORATED
BEAR DRAW STATE COM 1
660 FNL 1980 FEL
TWP: 17 S - Range: 29 E - Sec. 3

A

