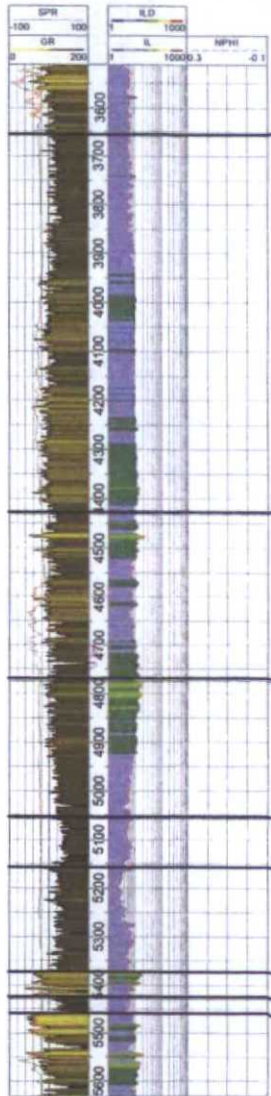


B

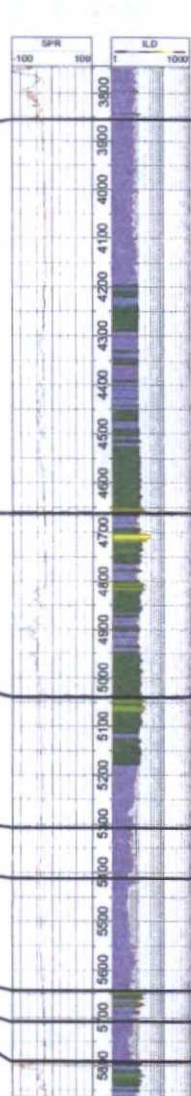
3004505065000
WARNER FEDERAL 1
HUMBLE OIL & REFG CO
SPUD DATE : 6/57
TD : 5,855
T22N R8W S10

<17.78FT>



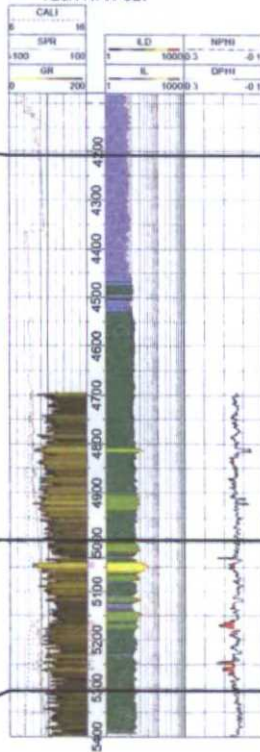
30043051640000
FULTON 1
QEP ENERGY COMPANY
SPUD DATE : 6/58
TD : 6,015
T23N R7W S31

<13.125FT>



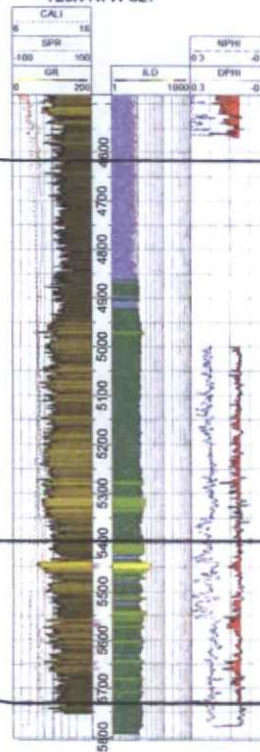
30043203320000
FEDERAL-B 6
ENCANA OIL & GAS
SPUD DATE : 10/78
TD : 5,400
T23N R7W S27

<3.33FT>



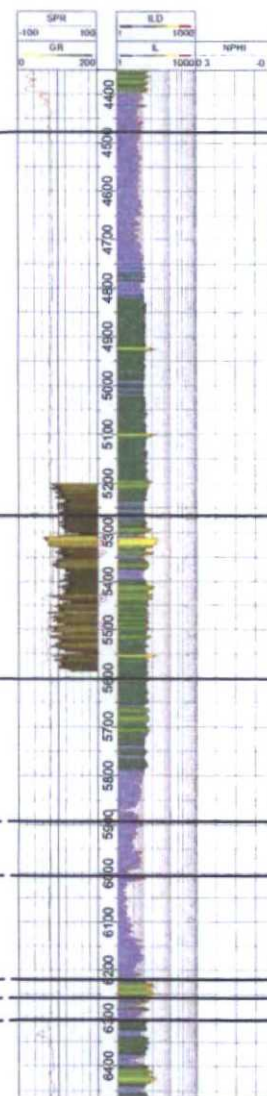
30043208670000
FEDERAL B 12
ENCANA OIL & GAS
SPUD DATE : 4/92
TD : 5,805
T23N R7W S27

<8.65FT>

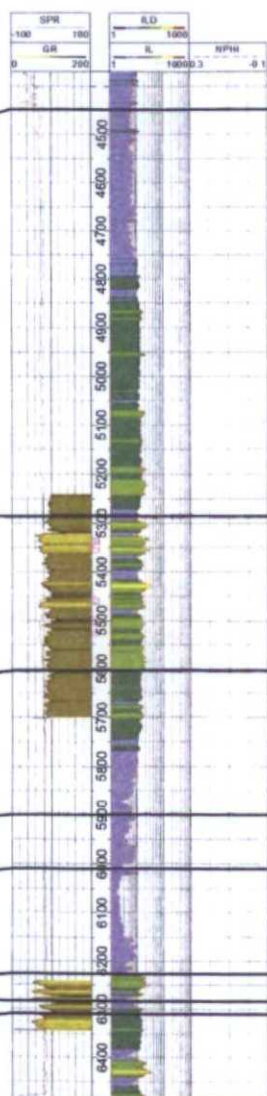


30043051920000
ROGERS 24-1
HOLCOMB OIL & GAS INC
SPUD DATE : 11/66
TD : 6,654
T23N R7W S24

<13.105FT>



30039051060000
MCBEE B 1
CONTINENTAL OIL CO
SPUD DATE : 1/57
TD : 6,641
T23N R8W S7

**B'**

Mancos

Gallup

Base Gallup

Juana Lopez

Carlile

Greenhorn
Graneros
Dakota

BEFORE THE OIL CONVERSION
DIVISION
Santa Fe, New Mexico
Exhibit No. 11
Submitted by: ENCANA
Hearing Date: October 1, 2015