

**BEFORE THE OIL CONSERVATION DIVISION**

**Application of WPX Energy Production, LLC For Approval Of The Kimbeto Wash Unit; Creation Of A New Pool For Horizontal Development Within The Unit Area, And For Allowance Of 330 Foot Setbacks From The Exterior Of The Proposed Unit, San Juan County, New Mexico.**

**Case 15375**

**WPXENERGY®**



R 9 W

T  
23  
N

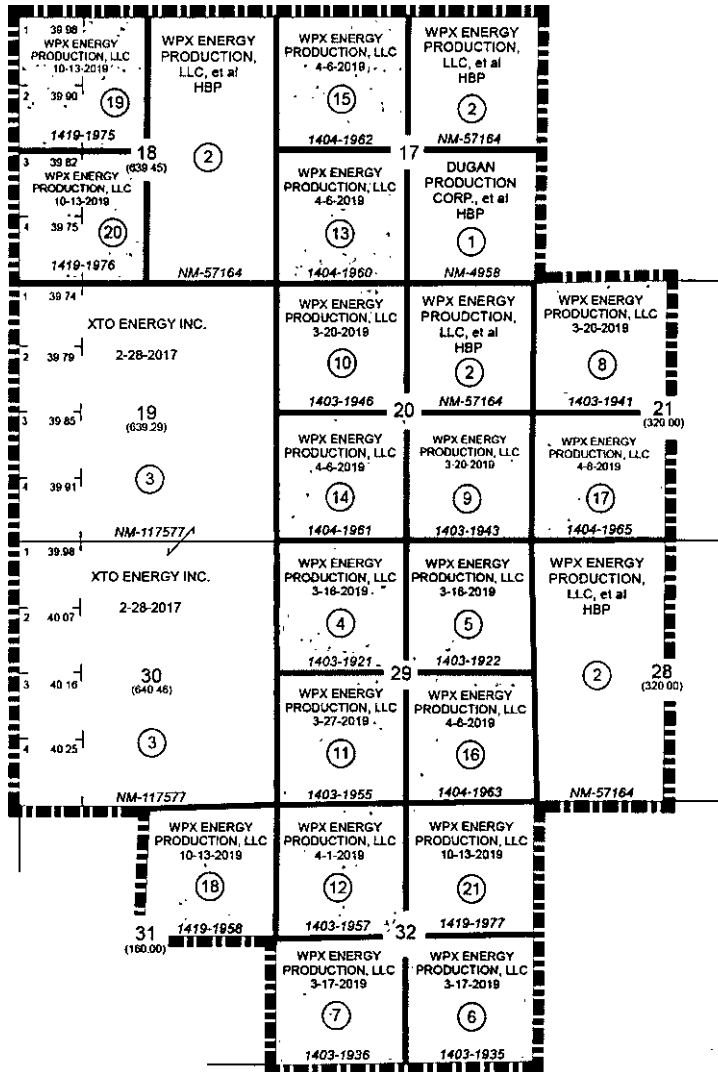
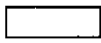
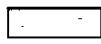
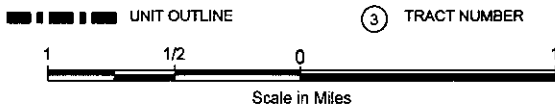


EXHIBIT "A"

	ACREAGE	PERCENTAGE
 FEDERAL LANDS	2,399.75	45.46%
 ALLOTTED LANDS	2,879.45	54.54%
<b>TOTALS</b>	<b>5,279.20</b>	<b>100.00%</b>

# KIMBETO WASH UNIT AREA

SAN JUAN COUNTY, NEW MEXICO



NOTE: UNLESS OTHERWISE NOTED HEREIN THE SECTIONS ON THIS PLAT CONTAIN 640.00 ACRES

WPX ENERGY PRODUCTION, LLC  
TULSA, OKLAHOMA

8-27-2015

BEFORE THE OIL CONVERSATION  
DIVISION  
Santa Fe, New Mexico  
Exhibit No. 1  
Submitted by: WPX ENERGY PRODUCTION  
Hearing Date: September 17, 2015