

| | | | | | |
|-----------------------|----------|----------|-------------------------|-------------|---------------------------|
| 12-22-2015 DATE IN | SUSPENSE | ENGINEER | 12-23-2015 LOGGED IN | NSL TYPE | PMAM1535740998 APP NO. |
|-----------------------|----------|----------|-------------------------|-------------|---------------------------|

ABOVE THIS LINE FOR DIVISION USE ONLY

NEW MEXICO OIL CONSERVATION DIVISION
- Engineering Bureau -
1220 South St. Francis Drive, Santa Fe, NM 87505



TIGER # 203H56
Case 15456

ADMINISTRATIVE APPLICATION CHECKLIST

THIS CHECKLIST IS MANDATORY FOR ALL ADMINISTRATIVE APPLICATIONS FOR EXCEPTIONS TO DIVISION RULES AND REGULATIONS WHICH REQUIRE PROCESSING AT THE DIVISION LEVEL IN SANTA FE

Application Acronyms:

[NSL-Non-Standard Location] [NSP-Non-Standard Proration Unit] [SD-Simultaneous Dedication]
[DHC-Downhole Commingling] [CTB-Lease Commingling] [PLC-Pool/Lease Commingling]
[PC-Pool Commingling] [OLS - Off-Lease Storage] [OLM-Off-Lease Measurement]
[WFX-Waterflood Expansion] [PMX-Pressure Maintenance Expansion]
[SWD-Salt Water Disposal] [IPI-Injection Pressure Increase]
[EOR-Qualified Enhanced Oil Recovery Certification] [PPR-Positive Production Response]

[1] **TYPE OF APPLICATION** - Check Those Which Apply for [A]

[A] Location - Spacing Unit - Simultaneous Dedication
☒ NSL ☐ NSP ☐ SD

Check One Only for [B] or [C]

[B] Commingling - Storage - Measurement
☐ DHC ☐ CTB ☐ PLC ☐ PC ☐ OLS ☐ OLM

[C] Injection - Disposal - Pressure Increase - Enhanced Oil Recovery
☐ WFX ☐ PMX ☐ SWD ☐ IPI ☐ EOR ☐ PPR

[D] Other: Specify _____

- NSL
- Matador Production
Company
228937

well
- Tig CR 14-245-288
RB #203H
30-015-43502

Pool

[2] **NOTIFICATION REQUIRED TO:** - Check Those Which Apply, or ☐ Does Not Apply

[A] ☐ Working, Royalty or Overriding Royalty Interest Owners

[B] ☒ Offset Operators, Leaseholders or Surface Owner

[C] ☐ Application is One Which Requires Published Legal Notice

[D] ☐ Notification and/or Concurrent Approval by BLM or SLO
U.S. Bureau of Land Management - Commissioner of Public Lands, State Land Office

[E] ☐ For all of the above, Proof of Notification or Publication is Attached, and/or,

[F] ☐ Waivers are Attached

- Cylebne BL4RD
WOLFcamp South
(GHS)
75750

[3] **SUBMIT ACCURATE AND COMPLETE INFORMATION REQUIRED TO PROCESS THE TYPE OF APPLICATION INDICATED ABOVE.**

[4] **CERTIFICATION:** I hereby certify that the information submitted with this application for administrative approval is **accurate** and **complete** to the best of my knowledge. I also understand that **no action** will be taken on this application until the required information and notifications are submitted to the Division.

Note: Statement must be completed by an individual with managerial and/or supervisory capacity.

Jennifer Bradfute
Print or Type Name

Signature

Title

12/22/2015
Date

jlb@modrall.com
e-mail Address



MODRALL SPERLING

L A W Y E R S

December 22, 2015

Jennifer L. Bradfute
505.848.1845
Fax: 505.848.1882
jlb@modrall.com

David Catanach
Oil Conservation Division
New Mexico Department of Energy,
Minerals and Natural Resources
1220 South Saint Francis Drive
Santa Fe, New Mexico 87505

Re: Application of Matador Production Company for administrative approval of unorthodox well location for its Tiger 14-24S-28E RB #203H well located in the S/2 of Section 14, Township 24 South, Range 28 East, N.M.P.M., Eddy County, New Mexico.

Dear Mr. Catanach:

Matador Production Company (OGRID No. 228937) seeks administrative approval of an unorthodox well location for its Tiger 14-24S-28E RB #203H well (API No. 30-015-43502) to be completed within the Culebra Bluff, Wolfcamp, South (Gas) pool (Pool Code 75750) underlying the S/2 of Section 14, Township 24S, Range, 28E, Eddy County, New Mexico. Attached as **Exhibit A** is C-102 for the well. This is a horizontal well that will be drilled as follows:

Tiger 14-24S-28E RB #203H

- Surface Hole Location: 1,638 feet from the South line and 330 feet from the East line of Section 14, Township 24 South, Range 28 East;
- First Perforation Point: 2,309 feet from the South line and 330 feet from the East line of Section 14;
- Last Perforation Point: 2,301 feet from the South line and 330 feet from the West line of Section 14; and
- Bottom Hole Location: 2,301 feet from the South line and 240 feet from the West line of Section 14.

Matador Production Company is requesting this NSL in order to efficiently produce its interests in Section 14. This well is producing from the Culebra Bluff, Wolfcamp, South (Gas) pool (Pool Code 75750). There are no

Modrall Sperling
Roehl Harris & Sisk P.A.

Bank of America Centre
500 Fourth Street NW
Suite 1000
Albuquerque,
New Mexico 87102

PO Box 2168
Albuquerque,
New Mexico 87103-2168

Tel: 505.848.1800
www.modrall.com

special pool rules for this pool, and thus the setback requirements under Rule 19.15.15.10(B) of 660' apply. As a result, the completed interval for this well is closer than 660' from the boundary of the project area. The unorthodox location will encroach towards the S/2 and the NW/4 of Section 13, the S/2 and the NE/4 of Section 15, and the N/2 of Section 14. **Exhibit B** is list showing the surrounding ownership and the project area for the proposed Tiger 14-24S-28E RB #203H well in relation to adjoining units.

Exhibit C is a list of the parties affected by the encroachment. Each of these parties have been provided notice of this application by certified mail, return receipt requested, advising them that if they have any objection to this well, it must be filed with the New Mexico Oil Conservation Division within 20 days of the mailing of this notice. In addition, a copy of this application has also been provided to the New Mexico State Land Office.

Your attention to this matter is appreciated.

Sincerely,



*Attorney for Matador Production
Company*

cc: New Mexico State Land Office
Post Office Box 1148
Santa Fe, New Mexico 87504

District I
1625 N. French Dr., Hobbs, NM 88240
Phone: (575) 393-6161 Fax: (575) 393-0720
District II
811 S. First St., Artesia, NM 88210
Phone: (575) 748-1283 Fax: (575) 748-9720
District III
1000 Rio Brazos Road, Aztec, NM 87410
Phone: (505) 334-6178 Fax: (505) 334-6170
District IV
1220 S. St. Francis Dr., Santa Fe, NM 87505
Phone: (505) 476-3460 Fax: (505) 476-3462

State of New Mexico
Energy, Minerals & Natural Resources
Department
OIL CONSERVATION DIVISION
1220 South St. Francis Dr.
Santa Fe, NM 87505

FORM C-102
Revised August 1, 2011
Submit one copy to appropriate
District Office

☐ AMENDED REPORT

WELL LOCATION AND ACREAGE DEDICATION PLAT

| | | |
|------------------------------------------------|-----------------------------------------------------------------|-----------------------------------------------------------------------|
| ¹ API Number 30-015-43502 | ² Pool Code 75750 | ³ Pool Name CULEBRA BLUFF; WOLFCAMP; SOUTH (GAS) |
| ⁴ Property Code | ⁵ Property Name TIGER 14-24S-28E RB | ⁶ Well Number #203H |
| ⁷ GRID No. 228937 | ⁸ Operator Name MATADOR PRODUCTION COMPANY | ⁹ Elevation 2973' |

¹⁰Surface Location

| UL or lot no. | Section | Township | Range | Lot Idn | Feet from the | North/South line | Feet from the | East/West line | County |
|---------------|-----------|-------------|-------------|----------|---------------|------------------|---------------|----------------|-------------|
| I | 14 | 24-S | 28-E | - | 1638' | SOUTH | 330' | EAST | EDDY |

| UL or lot no. | Section | Township | Range | Lot Idn | Feet from the | North/South line | Feet from the | East/West line | County |
|---------------|-----------|-------------|-------------|----------|---------------|------------------|---------------|----------------|-------------|
| L | 14 | 24-S | 28-E | - | 2301' | SOUTH | 240' | WEST | EDDY |

| | | | |
|---------------------------------------------|-------------------------------|----------------------------------|-------------------------|
| ¹¹ Dedicated Acres 320 | ¹² Joint or Infill | ¹³ Consolidation Code | ¹⁴ Order No. |
|---------------------------------------------|-------------------------------|----------------------------------|-------------------------|

No allowable will be assigned to this completion until all interests have been consolidated or a non-standard unit has been approved by the division.

| | | | | |
|--------------------------------------------------------------------------------------------------------------------------------------------------------------------------------------------------------------------------------------|----------------------------------------------------------------------------------------------------------------------------------------------------------------------------------------------------------------------------------------|----------------------------------------------------------------------------------------------------------------------------------------------------------------------------------------------------------------------------------|-----------------------------------------------------------------------------------------------------------------------------------------------------------------------------------------------------------------------------------------|---------------------------------------------------------------------------------------------------------------------------------------------------------------------------------------------------------------------------------------------------------------------------------------------------------------------------------------------------------------------------------------------------------------------------------------------------------------------------------------------------------------------------------------------------------------------------------------------------------------------------------------------------------------------------------------------------------|
| <p>BOTTOM HOLE LOCATION NEW MEXICO EAST NAD 1927 X=582833 Y=442744 LAT.: N 32.2189367 LONG.: W 104.0654949 NAD 1983 X=623926 Y=442804 LAT.: N 32.2170621 LONG.: W 104.0662777</p> | <p>LAST PERFORATION POINT NEW MEXICO EAST NAD 1927 X=582743 Y=442745 LAT.: N 32.2169403 LONG.: W 104.0657859 NAD 1983 X=624016 Y=442803 LAT.: N 32.2170584 LONG.: W 104.0659867</p> | <p>SURFACE LOCATION NEW MEXICO EAST NAD 1927 X=587858 Y=442014 LAT.: N 32.2148958 LONG.: W 104.0493992 NAD 1983 X=628841 Y=442073 LAT.: N 32.2150179 LONG.: W 104.0503903</p> | <p>FIRST PERFORATION POINT NEW MEXICO EAST NAD 1927 X=587646 Y=442688 LAT.: N 32.2167422 LONG.: W 104.0499306 NAD 1983 X=628830 Y=442744 LAT.: N 32.2188642 LONG.: W 104.0504217</p> | <p>17 OPERATOR CERTIFICATION I hereby certify that the information contained herein is true and complete to the best of my knowledge and belief, and that this organization either owns a working interest or undivided mineral interest in the land including the proposed bottom hole location or has a right to drill this well at this location pursuant to a contract with an owner of such a mineral or working interest, or to a subsidiary pooling agreement or a compulsory pooling under heretofore entered by the division.</p> <p><i>Chris Carleton</i> 12/7/15 Signature Date Chris Carleton Printed Name ccarleton@matadorresources.com E-mail Address</p> |
| <p>AZ = 270.70° 4814.0' AZ = 270.70° 90.0' AZ = 309.02° 671.7'</p> | | | | <p>18 SURVEYOR CERTIFICATION I hereby certify that the well location shown on this plat was plotted from field notes of actual surveys made by me or under my supervision, and that the same is true to the best of my belief.</p> <p>11/25/2015 Date of Survey Signature and Seal of Professional Surveyor MICHAEL B. BROWN NEW MEXICO 18829 PROFESSIONAL SURVEYOR Certificate Number</p> |

EXHIBIT

A



MODRALL SPERLING
LAWYERS

Tiger #203H

December 22, 2015

VIA CERTIFIED MAIL
RETURN RECEIPT REQUESTED

Case 15456

Jennifer L. Bradfute
505.848.1845
Fax: 505.848.1882
jlb@modrall.com

TO AFFECTED PARTIES

Re: Application of Matador Production Company for administrative approval of unorthodox well location for its Tiger 14-24S-28E RB #203H well located in the S/2 of Section 14, Township 24 South, Range 28 East, N.M.P.M., Eddy County, New Mexico.

Ladies and Gentlemen:

Enclosed in this notice is a copy of the above referenced application filed with the New Mexico Conservation Division on this date. Any objections that you have to this application must be filed in writing with the New Mexico Oil Conservation Division, 1220 South St. Francis Drive, Santa Fe, New Mexico 87505, within twenty (20) days from the date the Division receives the above referenced application. If no objections are received within twenty days, this application may be administratively approved by the Division.

If you have any questions concerning this application, please contact:

Chris Carleton, RPL
Matador Production Company
5400 LBJ Freeway, Suite 1500
Dallas, TX 75240
Phone: 972-371-5430

If you have no objection to this application, please sign the waiver as indicated below and return the original. Your assistance and cooperation in this matter are appreciated.

Sincerely,

Jennifer L. Bradfute

Attorney for Matador Production Company

Modrall Sperling
Roehl Harris & Sisk P.A.

Bank of America Centre
500 Fourth Street NW
Suite 1000
Albuquerque,
New Mexico 87102

PO Box 2168
Albuquerque,
New Mexico 87103-2168

Tel: 505.848.1800
www.modrall.com

WAIVER

_____ hereby waives objection to the above referenced Application for Unorthodox Location for the Tiger 14-24S-28E RB #203H well, underlying the S/2 of Section 14, Township 24S, Range, 28E, Eddy County, New Mexico.

Dated: _____

Signature

| | | | | | |
|---------|----------|----------|-----------|------|---------|
| DATE IN | SUSPENSE | ENGINEER | LOGGED IN | TYPE | APP NO. |
|---------|----------|----------|-----------|------|---------|

ABOVE THIS LINE FOR DIVISION USE ONLY

NEW MEXICO OIL CONSERVATION DIVISION
 - Engineering Bureau -
 1220 South St. Francis Drive, Santa Fe, NM 87505



ADMINISTRATIVE APPLICATION CHECKLIST

THIS CHECKLIST IS MANDATORY FOR ALL ADMINISTRATIVE APPLICATIONS FOR EXCEPTIONS TO DIVISION RULES AND REGULATIONS WHICH REQUIRE PROCESSING AT THE DIVISION LEVEL IN SANTA FE

Application Acronyms:

[NSL-Non-Standard Location] [NSP-Non-Standard Proration Unit] [SD-Simultaneous Dedication]
[DHC-Downhole Commingling] [CTB-Lease Commingling] [PLC-Pool/Lease Commingling]
[PC-Pool Commingling] [OLS - Off-Lease Storage] [OLM-Off-Lease Measurement]
[WFX-Waterflood Expansion] [PMX-Pressure Maintenance Expansion]
[SWD-Salt Water Disposal] [IPI-Injection Pressure Increase]
[EOR-Qualified Enhanced Oil Recovery Certification] [PPR-Positive Production Response]

[1] TYPE OF APPLICATION - Check Those Which Apply for [A]

- [A] Location - Spacing Unit - Simultaneous Dedication
☒ NSL ☐ NSP ☐ SD

Check One Only for [B] or [C]

- [B] Commingling - Storage - Measurement
☐ DHC ☐ CTB ☐ PLC ☐ PC ☐ OLS ☐ OLM

- [C] Injection - Disposal - Pressure Increase - Enhanced Oil Recovery
☐ WFX ☐ PMX ☐ SWD ☐ IPI ☐ EOR ☐ PPR

- [D] Other: Specify _____

[2] NOTIFICATION REQUIRED TO: - Check Those Which Apply, or ☐ Does Not Apply

- [A] ☐ Working, Royalty or Overriding Royalty Interest Owners
 [B] ☒ Offset Operators, Leaseholders or Surface Owner
 [C] ☐ Application is One Which Requires Published Legal Notice
 [D] ☐ Notification and/or Concurrent Approval by BLM or SLO
U.S. Bureau of Land Management - Commissioner of Public Lands, State Land Office
 [E] ☐ For all of the above, Proof of Notification or Publication is Attached, and/or,
 [F] ☐ Waivers are Attached

[3] SUBMIT ACCURATE AND COMPLETE INFORMATION REQUIRED TO PROCESS THE TYPE OF APPLICATION INDICATED ABOVE.

[4] CERTIFICATION: I hereby certify that the information submitted with this application for administrative approval is **accurate** and **complete** to the best of my knowledge. I also understand that **no action** will be taken on this application until the required information and notifications are submitted to the Division.

Note: Statement must be completed by an individual with managerial and/or supervisory capacity.

Jennifer Bradfute
 Print or Type Name

Signature

 Title

12/22/2015
 Date

jlb@modrall.com
 e-mail Address



MODRALL SPERLING

L A W Y E R S

December 22, 2015

Jennifer L. Bradfute
505.848.1845
Fax: 505.848.1882
jlb@modrall.com

David Catanach
Oil Conservation Division
New Mexico Department of Energy,
Minerals and Natural Resources
1220 South Saint Francis Drive
Santa Fe, New Mexico 87505

Re: Application of Matador Production Company for administrative approval of unorthodox well location for its Tiger 14-24S-28E RB #203H well located in the S/2 of Section 14, Township 24 South, Range 28 East, N.M.P.M., Eddy County, New Mexico.

Dear Mr. Catanach:

Matador Production Company (OGRID No. 228937) seeks administrative approval of an unorthodox well location for its Tiger 14-24S-28E RB #203H well (API No. 30-015-43502) to be completed within the Culebra Bluff, Wolfcamp, South (Gas) pool (Pool Code 75750) underlying the S/2 of Section 14, Township 24S, Range, 28E, Eddy County, New Mexico. Attached as **Exhibit A** is C-102 for the well. This is a horizontal well that will be drilled as follows:

Tiger 14-24S-28E RB #203H

- Surface Hole Location: 1,638 feet from the South line and 330 feet from the East line of Section 14, Township 24 South, Range 28 East;
- First Perforation Point: 2,309 feet from the South line and 330 feet from the East line of Section 14;
- Last Perforation Point: 2,301 feet from the South line and 330 feet from the West line of Section 14; and
- Bottom Hole Location: 2,301 feet from the South line and 240 feet from the West line of Section 14.

Matador Production Company is requesting this NSL in order to efficiently produce its interests in Section 14. This well is producing from the Culebra Bluff, Wolfcamp, South (Gas) pool (Pool Code 75750). There are no

Modrall Sperling
Roehl Harris & Sisk P.A.

Bank of America Centre
500 Fourth Street NW
Suite 1000
Albuquerque,
New Mexico 87102

PO Box 2168
Albuquerque,
New Mexico 87103-2168

Tel: 505.848.1800
www.modrall.com

special pool rules for this pool, and thus the setback requirements under Rule 19.15.15.10(B) of 660' apply. As a result, the completed interval for this well is closer than 660' from the boundary of the project area. The unorthodox location will encroach towards the S/2 and the NW/4 of Section 13, the S/2 and the NE/4 of Section 15, and the N/2 of Section 14. **Exhibit B** is list showing the surrounding ownership and the project area for the proposed Tiger 14-24S-28E RB #203H well in relation to adjoining units.

Exhibit C is a list of the parties affected by the encroachment. Each of these parties have been provided notice of this application by certified mail, return receipt requested, advising them that if they have any objection to this well, it must be filed with the New Mexico Oil Conservation Division within 20 days of the mailing of this notice. In addition, a copy of this application has also been provided to the New Mexico State Land Office.

Your attention to this matter is appreciated.

Sincerely,

A handwritten signature in black ink, appearing to read "Jennifer D. Bradfute".

Jennifer D. Bradfute
**Attorney for Matador Production
Company**

cc: New Mexico State Land Office
Post Office Box 1148
Santa Fe, New Mexico 87504

| | | | | | |
|-----------------------------------------------------------------------------------|--------------------------------------------------------------------------------------------------------------------------------------------------------------------------------------------|----------------------------------------------------------------------------------------|----------------------------------------------------------------------|------------------------------------------------------------------------------------------------------------------------|----------------------------------------------------------------------------------------------------------------------------------------------------------------------------------------------------|
| <p>Cogent En. 1-76-2018 HCW Exp.</p> | <p>Malaga Xplor Res. 1-24-16</p> | <p>R. Roidi RSC Res. 4-1-2015 HCW</p> | <p>W. Burkham Anno Longum 1-24-16</p> | <p>Devon 4-10-2013 RSC Res. 7-3-2017 Burkham 1/2 M.L. Francis Rous Anno Longum et al</p> | <p>Int'l Title 10-13-1</p> |
| <p>City of RSC (P/B) Res. 11-10-2015 HCW Exp. 1-24-16 15</p> | <p>RSC Res. 11-10-2015 HCW Exp. 1-24-16 15</p> | <p>Matador 7-18-2015 City of Malaga 15</p> | <p>J. Rowan Sm. Tr. 1-24-16</p> | <p>MRC Pierre 3-1-2017 RSC Res. 1-16-16 Cogent 10-16-2015 Cogent R. Burton 1-24-16</p> | <p>Devon 2 4-1-16 G.A.H. En. 12-9-2016 15</p> |
| <p>Cogent En. 1-27-2016 oil sec Xplor RSC 1-24-2016</p> | <p>Enron 1-27-2016 Korner Francis Enron Willow Lake 1-24-2016</p> | <p>H. Ebell RSC Res. 1-16-2015 NE/4 Aminoil 10-13-12</p> | <p>J. Rowan Sm. Tr. 1-24-16</p> | <p>MRC 1-27-18 M. P. Novare 1-24-16</p> | <p>Devon 1-27-17 M. P. Novare 1-24-16</p> |
| <p>Pardue Fms. 1-24-2016</p> | <p>W.A. Miller Internat'l Mins. & Chem (S)</p> | <p>Aminoil Int'l Mins. & Chem (S)</p> | <p>Cogent En. 10-18-2015 J. P. Vincent Oundo G. Sowa</p> | <p>Cogent 15-15 Devon 2-9-2017</p> | <p>Superdove Int'l Mins. & Chem (S)</p> |
| <p>RSC 9-20-2013 HW/4 LEO Francis, SWD Lake Disc U.S.</p> | <p>Sage Brush III W. A. Gussman Chilton Key 2-1-14 (6.7 Mil.) (Thunderbolt Pet.) Yellow Lake 1-18-73 NEB GNS International Mins & Chem (S)</p> | <p>RSC Res. 2-14-2016 S/2 FW Courtney</p> | <p>Cogent Ener. 10-18-2015 FW Courtney</p> | <p>RSC Res. 2-3-2017 MRC 2-7-17 Sun Ops Diner</p> | <p>G.A.H. En. 1-24-16 W. A. Gussman Chilton Key 2-1-14 (6.7 Mil.) (Thunderbolt Pet.) Yellow Lake 1-18-73 NEB GNS International Mins & Chem (S)</p> |
| <p>U.S. 0366541 Internat'l Mins & Chem (S)</p> | <p>U.S. 0366541 Internat'l Mins & Chem (S)</p> | <p>RSC Res. 11-19-2014 (Sqr) Pardue Internat'l Mins & Chem (S)</p> | <p>Devon Ener. work 1-24-16</p> | <p>G. Reed 27919 Oil, Fal Diner 2 1-24-16 2730</p> | <p>C.D. Ray 8-1-2013 11082338 1-24-16</p> |
| <p>Woodson O.F.G.</p> | <p>U.S. 0366541 Internat'l Mins & Chem (S)</p> | <p>RSC 11-1-2015 Y. H. H. A. A. 1-24-16 Store</p> | <p>OXY 77005 V.S. Internat'l Mins & Chem (S)</p> | <p>MRC 10-1-2017 Internat'l Mins. & Chem.</p> | <p>The Alcor Co. 12-1-2011 07573 8092 Featherstone 0-10-2016 U.S.</p> |

EXHIBIT
B

District I
1625 N. French Dr., Hobbs, NM 88240
Phone: (575) 393-6161 Fax: (575) 393-0720
District II
811 S. First St., Artesia, NM 88210
Phone: (575) 748-1283 Fax: (575) 748-9720
District III
1000 Rio Brazos Road, Aztec, NM 87410
Phone: (505) 334-6178 Fax: (505) 334-6170
District IV
1220 S. St. Francis Dr., Santa Fe, NM 87505
Phone: (505) 476-3460 Fax: (505) 476-3462

State of New Mexico
Energy, Minerals & Natural Resources
Department
OIL CONSERVATION DIVISION
1220 South St. Francis Dr.
Santa Fe, NM 87505

FORM C-102
Revised August 1, 2011
Submit one copy to appropriate
District Office

☐ AMENDED REPORT

WELL LOCATION AND ACREAGE DEDICATION PLAT

| | | |
|----------------------------------|----------------------------------------------------------|----------------------------------------------------------------|
| ¹ API Number | ² Pool Code 75750 | ³ Pool Name CULEBRA BLUFF; WOLFCAMP; SOUTH (GAS) |
| ⁴ Property Code | ⁵ Property Name TIGER 14-24S-28E RB | ⁶ Well Number #203H |
| ⁷ OGRID No. 228937 | ⁸ Operator Name MATADOR PRODUCTION COMPANY | ⁹ Elevation 2973' |

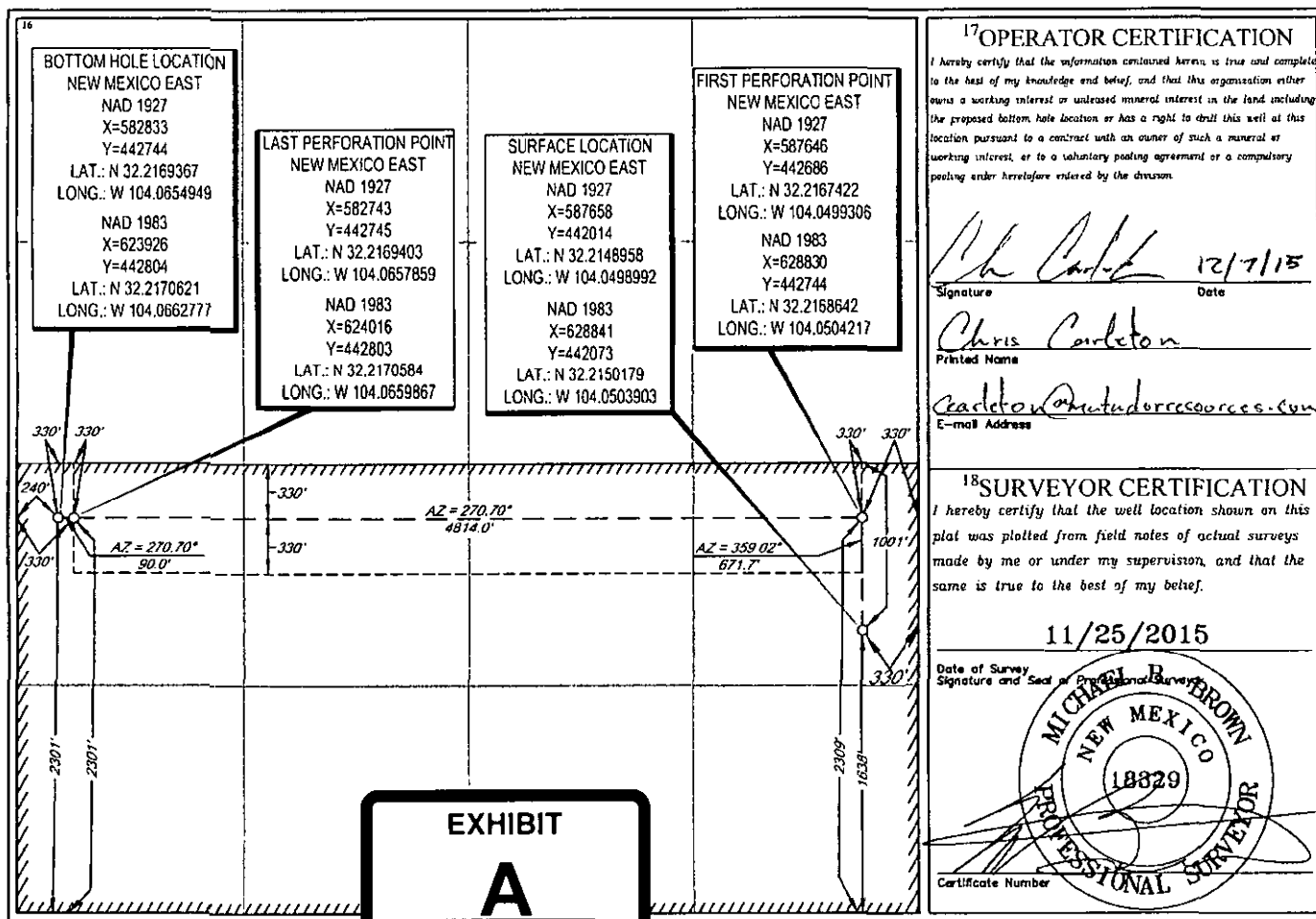
¹⁰Surface Location

| UL or lot no. | Section | Township | Range | Lot Idn | Feet from the | North/South line | Feet from the | East/West line | County |
|---------------|---------|----------|-------|---------|---------------|------------------|---------------|----------------|--------|
| I | 14 | 24-S | 28-E | - | 1638' | SOUTH | 330' | EAST | EDDY |

| UL or lot no. | Section | Township | Range | Lot Idn | Feet from the | North/South line | Feet from the | East/West line | County |
|---------------|---------|----------|-------|---------|---------------|------------------|---------------|----------------|--------|
| L | 14 | 24-S | 28-E | - | 2301' | SOUTH | 240' | WEST | EDDY |

| | | | |
|--------------------------------------|-------------------------------|----------------------------------|-------------------------|
| ¹² Dedicated Acres 320 | ¹³ Joint or Infill | ¹⁴ Consolidation Code | ¹⁵ Order No. |
|--------------------------------------|-------------------------------|----------------------------------|-------------------------|

No allowable will be assigned to this completion until all interests have been consolidated or a non-standard unit has been approved by the division.





MODRALL SPERLING

L A W Y E R S

EXHIBIT C:

List of Affected Persons for the Application of Matador Production Company for administrative approval of unorthodox well location for its Tiger 14-24S-28E RB #203H well located in the S/2 of Section 14, Township 24S, Range, 28E, N.M.P.M., Eddy County, New Mexico.

Jennifer L. Bradfute
505.848.1845
Fax: 505.848.1882
jlb@modrall.com

Dinero Operating Company
P.O. Box 10505
Midland, Texas 79702
ALT Address:
1004 N Big Spring St
Midland, TX 79701

Saber Oil & Gas Ventures, LLC
400 West Illinois Street, Suite 950
Midland, Texas 79701

Kaiser-Francis Oil Company
P.O. Box 21468
Tulsa, Oklahoma 74121-1468

EOG Resources
P.O. Box 2267
Midland, Texas 79702

Guardian Operating Corporation
6824 Island Circle
Midland, Texas 79707

The Conquistador Council Boy Scouts of
America
2603 North Aspen Avenue
Roswell, New Mexico 88201

PPC Operating Company LLC
P.O. Box 10505
Midland, Texas 79702

The Allar Company
735 Elm St.
Graham, Texas 76450

XPLOR Resources LLC
1104 N Shore Dr.
Carlsbad, NM 88220

Robert H. Forrest Jr. Oil, LLC
609 Elora Drive
Carlsbad, NM 88220

Devon Energy Production Company, L.P.
P.O. Box 108838
Oklahoma City, Oklahoma 73101-8838

Nadel and Gussman Permian, LLC
601 N. Marienfeld St.
Midland, Texas 79701

Modrall Sperling
Roehl Harris & Sisk P.A.

Bank of America Centre
500 Fourth Street NW
Suite 1000
Albuquerque,
New Mexico 87102

PO Box 2168
Albuquerque,
New Mexico 87103-2168

Tel: 505.848.1800
www.modrall.com