

DISTRICT I
1625 N. FLECHER DR., HOBBS, NM 88240
Phone: (505) 592-6161 Fax: (505) 383-9722

DISTRICT II
841 E. FIRST ST., ARTESIA, NM 88210
Phone: (505) 748-1523 Fax: (505) 748-9722

DISTRICT III
1000 HIG BRAZOS RD., AZTEC, NM 87410
Phone: (505) 334-6178 Fax: (505) 334-6170

DISTRICT IV
1820 N. ST. FRANCIS DR., SANTA FE, NM 87505
Phone: (505) 476-2460 Fax: (505) 476-2462

State of New Mexico
Energy, Minerals & Natural Resources Department
OIL CONSERVATION DIVISION
1220 SOUTH ST. FRANCIS DR.
Santa Fe, New Mexico 87505

Form C-102
Revised August 1, 2011
Submit one copy to appropriate
District Office

☐ AMENDED REPORT

WELL LOCATION AND ACREAGE DEDICATION PLAT

API Number 30-015- 43093	Pool Code 30215	Pool Name Hay Hollow; Bone Spring
Property Code 40112	Property Name SRO STATE COM	Well Number 69H
OCRID No. 229137	Operator Name COG OPERATING, LLC	Elevation 3099.8

Surface Location

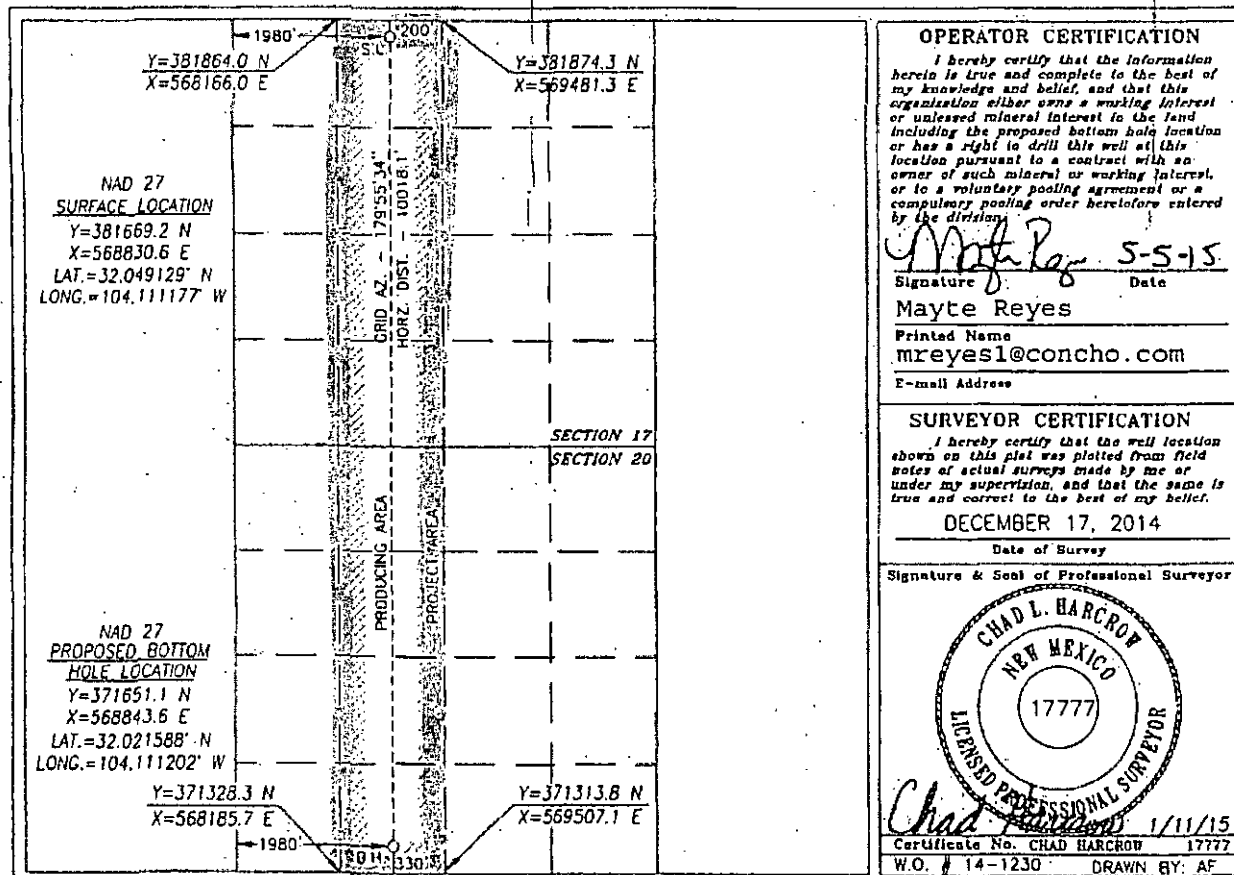
UL or lot No.	Section	Township	Range	Lot Idn.	Feet from the	North/South line	Feet from the	East/West line	County
C	17	26-S	28-E		200'	NORTH	1980'	WEST	EDDY

Bottom Hole Location If Different From Surface

UL or lot No.	Section	Township	Range	Lot Idn.	Feet from the	North/South line	Feet from the	East/West line	County
N	20	26-S	28-E		330'	SOUTH	1980'	WEST	EDDY

Dedicated Acres	Joint or Infill	Consolidation Code	Order No.
320			

NO ALLOWABLE WILL BE ASSIGNED TO THIS COMPLETION UNTIL ALL INTERESTS HAVE BEEN CONSOLIDATED
OR A NON-STANDARD UNIT HAS BEEN APPROVED BY THE DIVISION



NMOCD CASE Nos. 15441, 15481, 15482
NEX, SRO2 LLC AND SRO3 LLC
Exhibit No. 9
May 4, 2016

C 014092

SRO State Com 69H

Casing and Cement

String	Hole Size	Csg OD	PPF	Depth	Sx Cement	TOC
Surface	17-1/2"	13-3/8"	54.5#	620'	505	0'
Intermediate	12-1/4"	9-5/8"	36#	2470'	785	0'
Production	8-3/4"	5-1/2"	17#	18924'	3505	0'

Well Plan

Drill 17-1/2" hole to ~620' w/ fresh water spud mud. Run 13-3/8" 54.5# J55 STC casing to TD and cement to surface in one stage. Will use 1" tubing and Class C w/ 2% CaCl₂ to cement to surface, if necessary.

Drill 12-1/4" hole to ~2470' with saturated brine water. Run 9-5/8" 36# J55 LTC casing to TD and cement to surface in one stage.

Drill 8-3/4" vertical hole, curve and lateral to 18924' with cut brine. Run 5-1/2" 17# P110 CDC BTC casing to TD and cement to surface in one stage.

Well Control

Type	Working Pressure	Test Pressure	Manufacturer
Double Ram	3000	3000	Cameron