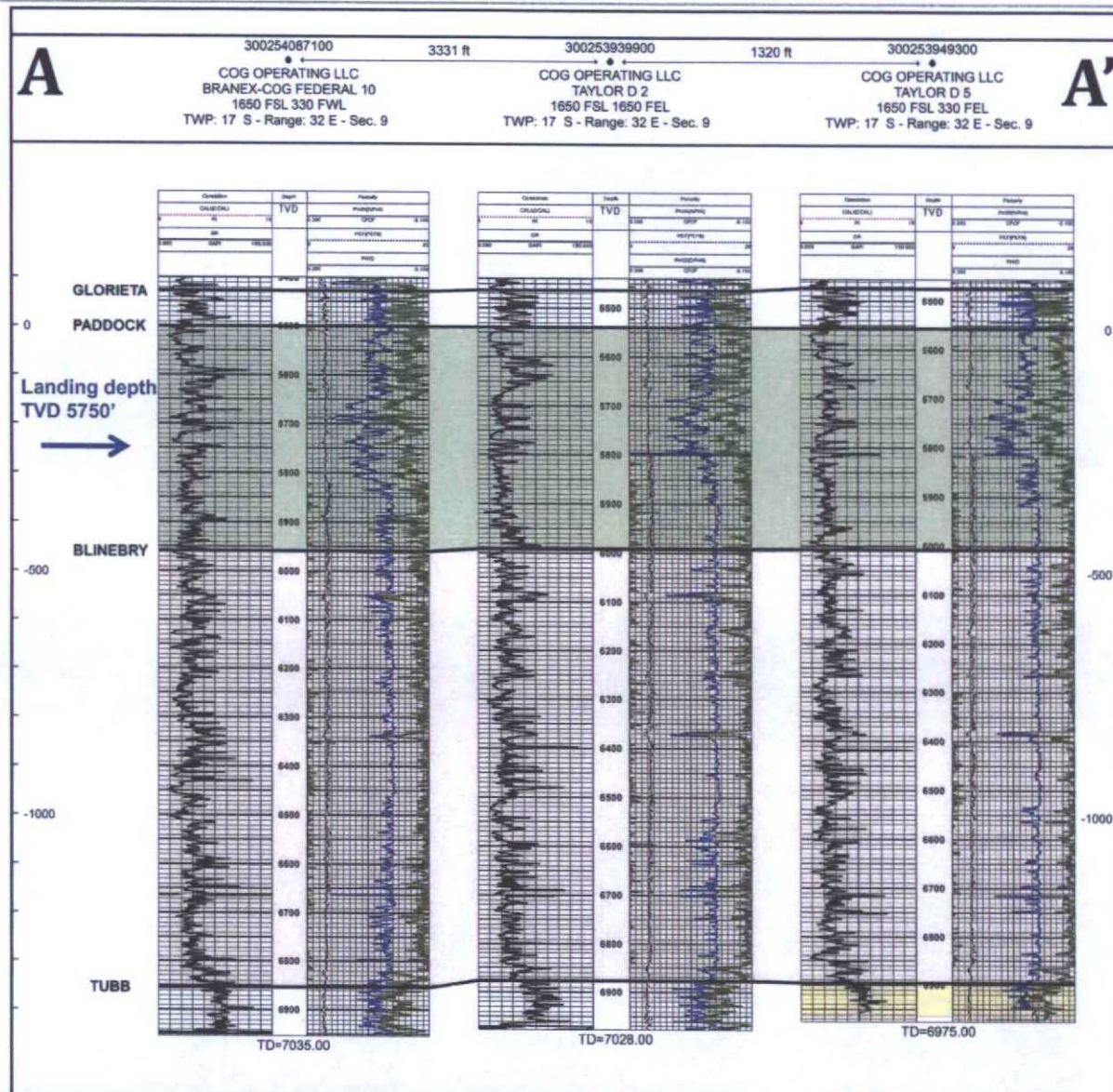


# Maljamar Area – Branex COG Fed Com #15H Stratigraphic Cross Section





4. **Case No. 15501:** *Application of COG Operating LLC for a non-standard spacing and proration unit and compulsory pooling, Lea County, New Mexico.* Applicant in the above-styled cause seeks an order (1) creating a non-standard, 160.86-acre, more or less, spacing and proration unit comprised of the S/2 N/2 of Section 7, Township 19 South, Range 32 East, NMPM, Lea County, New Mexico; and (2) pooling all mineral interests in the Bone Spring formation underlying this acreage. Said non-standard unit is to be dedicated to applicant's proposed Spruce Goose Federal Com No. 3H Well, SW/4 NW/4 (Lot 2) to a standard bottom hole location in the SE/4 NE/4 (Unit H) of Section 7. The completed interval for this well will remain within the 330-foot standard offset required by the rules. Also to be considered will be the cost of drilling and completing said well and the allocation of the cost thereof as well as actual operating costs and charges for supervision, designation of COG Operating LLC as operator of the well and a 200% charge for risk involved in drilling said well. Said area is located approximately 14 miles southeast of Loco Hills, New Mexico.

5. **Case No. 15499:** *((Continued from the June 9, 2016 Examiner Hearing))*  
**Application of COG Operating LLC for a non-standard spacing and proration unit and compulsory pooling, Lea County, New Mexico.** Applicant in the above-styled cause seeks an order (1) creating a non-standard, 160-acre, more or less, spacing and proration unit comprised of the N/2 S/2 of Section 9, Township 17 South, Range 32 East, NMPM, Lea County, New Mexico; and (2) pooling all mineral interests in the Yeso formation from the top of the Paddock to the base of the Blinebry. Said non-standard unit is to be dedicated to applicant's proposed **Branex Federal Com No. 15H Well**, which will be horizontally drilled from a surface location in the NW/4 SW/4 (Unit L) to a standard bottom hole location in the NE/4 SE/4 (Unit I) of Section 9. The completed interval for this well will remain within the 330-foot standard offset required by the rules. Also to be considered will be the cost of drilling and completing said well and the allocation of the cost thereof as well as actual operating costs and charges for supervision, designation of COG Operating LLC as operator of the well and a 200% charge for risk involved in drilling said well. Said area is located approximately 1 mile

6. **Case No. 15492:** *(Continued from the May 26, 2016 Examiner Hearing.)*  
**Application of EOG Resources, Inc. for a non-standard spacing and proration unit and compulsory pooling, Lea County, New Mexico.** Applicant in the above-styled cause seeks an order (1) creating a 160-acre non-standard spacing and proration unit comprised of the E/2 E/2 of Section 16, Township 22 South, Range 33 East, NMPM, Lea County, New Mexico; and (2) pooling all mineral interests in the Bone Spring formation underlying this acreage. Said non-standard unit is to be dedicated to applicant's proposed **Speedy 16 State Com No. 501H Well**, which will be horizontally drilled from a surface location in the SE/4 SE/4 (Unit P) to a standard bottom hole location in NE/4 NE/4 (Unit A) of Section 16. The completed interval for this well will remain within the 330-foot standard offset required by the rules. Also to be considered will be the cost of drilling and completing said well and the allocation of the cost thereof as well as actual operating costs and charges for supervision, designation of EOG Resources, Inc. as operator of the well and a 200% charge for risk involved in drilling said well. Said area is located approximately 20 miles southwest of Oil Center, New Mexico.

7. **Case No. 15490:** *(Continued from the May 26, 2016 Examiner Hearing.)*  
**Application of Mewbourne Oil Company for a nonstandard spacing and proration unit, compulsory pooling, and an unorthodox gas well location, Eddy County, New Mexico.** Mewbourne Oil Company seeks an order approving a 640 acre non-standard spacing and proration unit in the Wolfcamp formation underlying the W/2 of Section 22 and the W/2 of Section 27, Township 26 South, Range 27 East, NMPM, pooling all mineral interests in the Wolfcamp formation underlying the non-standard spacing and proration unit, and approving an unorthodox gas well location. The unit is to be dedicated to the **Owl Draw 27/22 W2NC Fed. Com. Well No. 2H**, a horizontal well with a surface location 170 feet from the south line and 2230 feet from the west line of Section 27, and a terminus 330 feet from the north line and 2310 feet from the west line of Section 22. The beginning and end of the producing interval will be unorthodox. Also to be considered will be the cost of drilling and completing the well and the allocation of the cost thereof, as well as actual operating costs and charges for supervision, designation of applicant as operator of the well, and a 200% charge for the risk involved in drilling and completing the well. The unit is located approximately 13-1/2 miles south-southeast of Black River Village, New Mexico.

8. **Case No. 15476:** *(Continued from the April 14, 2016 Examiner Hearing.)*  
**Application of Matador Production Company for compulsory pooling, Eddy County, New Mexico.** Applicant seeks an order pooling all mineral interests in the Wolfcamp formation underlying the N/2 of Section 10, Township 24 South, Range 28 East, NMPM, for all pools or formations developed on 320 acre spacing within that vertical extent, including the South Culebra Bluff-Wolfcamp Gas Pool. The unit will be dedicated to the **Guitar 10-24S-28E RB Well No. 202H**, a horizontal well with a surface location in the SE/4 NE/4, and a terminus in the SW/4 NW/4, of Section 10. Also to be considered will be the cost of drilling and completing the well and the allocation of the cost thereof, as well as actual operating costs and charges for supervision, designation of applicant as operator of the well, and a 200% charge for the risk involved in drilling and completing the well. The unit is located approximately 1 mile north of Malaga, New Mexico.