

**A** 30045242010000  
UNION-NAVAJO 21  
GRAHAM ROYALTY  
SPUD DATE : 3/80  
TD : 6,405  
T23N R8W S5

<8,910FT>

30045354230000  
LOGOS 5  
LOGOS OPERATING LLC  
SPUD DATE : 1/13  
TD : 6,443  
T23N R8W S4

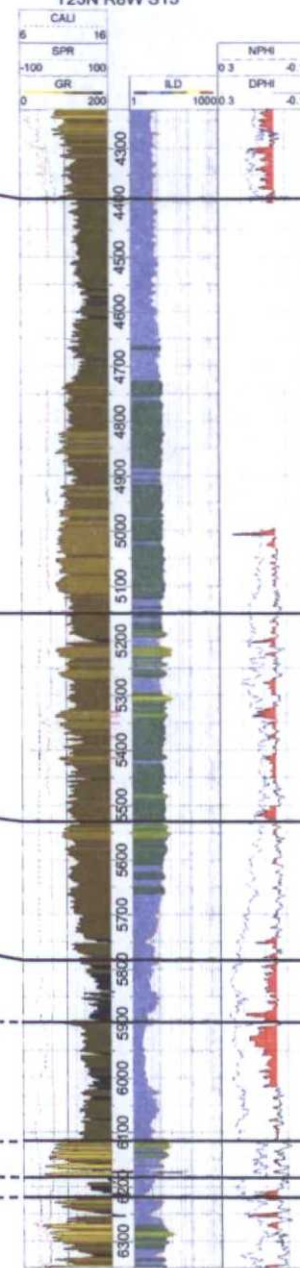
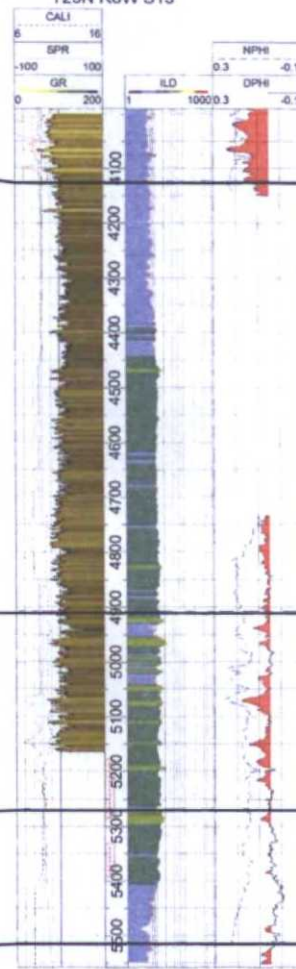
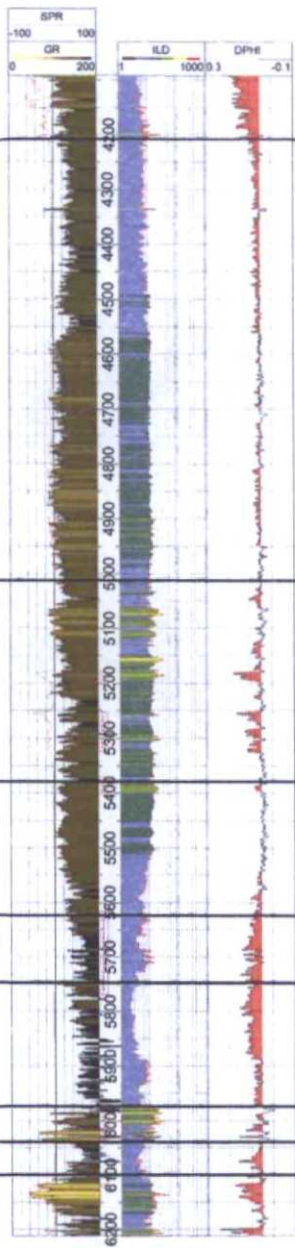
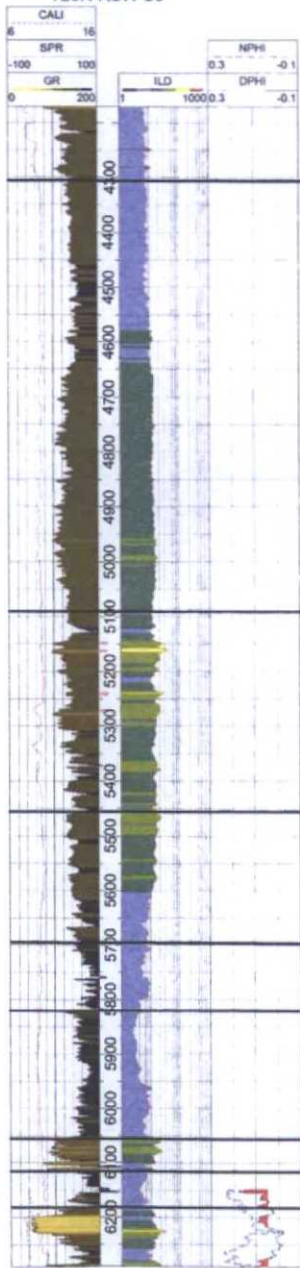
<8,748FT>

30045246780000  
FEDERAL-15 41  
KENC OIL & GAS INC  
SPUD DATE : 4/81  
TD : 5,558  
T23N R8W S15

<10,403FT>

30045242450000  
DOME FEDERAL-13 41  
KENC OIL & GAS INC  
SPUD DATE : 4/80  
TD : 6,465  
T23N R8W S13

**A'**



Mancos Shale

Gallup

Base Gallup

Juana Lopez

Carlile

Greenhorn Limestone

Graneros Shale

Dakota Sandstone

BEFORE THE OIL CONVERSION  
DIVISION

Santa Fe, New Mexico

Exhibit No. 7

Submitted by: ENCANA OIL & GAS (USA) INC.

Hearing Date: February 18, 2016