



RECEIVED

2017 FEB 24 9 21 AM

P.O. Box 2267, Midland, Texas 79702  
Phone: (432) 686-3600 Fax: (432) 686-3773

February 7, 2017

Bureau of Land Management  
Carlsbad Field Office  
620 E. Greene St.  
Carlsbad, New Mexico 88220-6292

State of New Mexico  
Oil Conservation Division  
1220 South St. Francis Drive  
Santa Fe, New Mexico 87504

Re: East Corbin Federal Delaware Unit  
Serial No. NMNM 91067X  
2017 Plan of Development  
Lea County, New Mexico  
EOG Resources, Inc. Contract K0080195

Gentlemen:

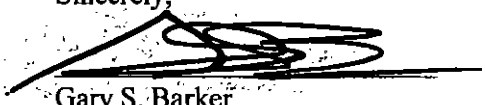
EOG Resources, Inc. (EOG), as Unit Operator of the East Corbin Federal Delaware Unit (ECDU), hereby submits for your approval, our 2017 Plan of Development.

Items included are as follows: Planned 2017 operations, previous year operations, current status of all wells within the unit, and production graphs for each productive reservoir. Also attached is a current map, showing respectively the unit's: structural and geologic interpretations, participating area boundaries, wells, flow-lines, and roads.

It is understood that approval of this plan does not approve the work covered by the plan. Individual approval is still required for such items as APD's/ROW's/etc.

Any modifications or additions to this Plan of Development will be filed as supplements to the plan.

Sincerely,



Gary S. Barker  
Landman

**2017 Planned Operations:**

**Drilling -**

At this time, EOG does not plan any new drill wells in the ECDU.

**Completions -**

At this time, EOG does not plan any new drill wells in the ECDU.

**Plug Back -**

At this time, EOG does not plan any plug backs in the ECDU.

**Conversion -**

At this time, EOG does not plan any conversions in the ECDU.

**Abandonment -**

None

**Other surface disturbing operations -**

None

**Previous Year Operations (2016):****Drilling –**

EOG did not drill any new wells in the ECDU in 2016.

**Completions –**

EOG did not complete any wells in the ECDU in 2016.

**Plug Back –**

EOG did not plug back any wells in the ECDU in 2016.

**Conversion –**

EOG did not complete any conversions in the ECDU in 2016.

**Abandonment –**

None

**Other surface disturbing operations –**

None

**Status of all Wells within the Unit:**

| WELL NAME & NUMBER | API NUMBER | COMP DATE | ZONE     | STATUS    |
|--------------------|------------|-----------|----------|-----------|
| EDCU #1            | 3002530622 | 10-07-89  | Delaware | WIW       |
| EDCU #2            | 3002530499 | 01-13-89  | Delaware | Producing |
| EDCU #3            | 3002530949 | 10-18-90  | Delaware | WIW       |
| EDCU #5            | 3002531253 | 06-24-91  | Delaware | Producing |
| EDCU #6            | 3002530736 | 01-05-90  | Delaware | WIW       |
| EDCU #7            | 3002530758 | 01-12-90  | Delaware | TA        |
| EDCU #8            | 3002530973 | 09-17-90  | Delaware | Producing |
| EDCU #9            | 3002532915 | 07-21-95  | Delaware | WIW       |

**Production Graphs:**

See Attachments

**Map of structural and geologic interpretations, participating area boundaries, wells, flow-lines, and roads:**

See Attachments

7

EOG Resources, Inc. believes that all current East Corbin Federal Delaware Unit obligations have been satisfied.

In accordance with Section 11 of the East Corbin Federal Delaware Unit Agreement, please signify your approval of the 2017 Plan of Development by executing in the signature block below. Please return one approved copy to EOG Resources, Inc. at the letterhead address.

Should you have any questions or comments in this regard, please contact me at 432-686-3637.

\_\_\_\_\_  
**Bureau of Land Management**

\_\_\_\_\_  
**Date**

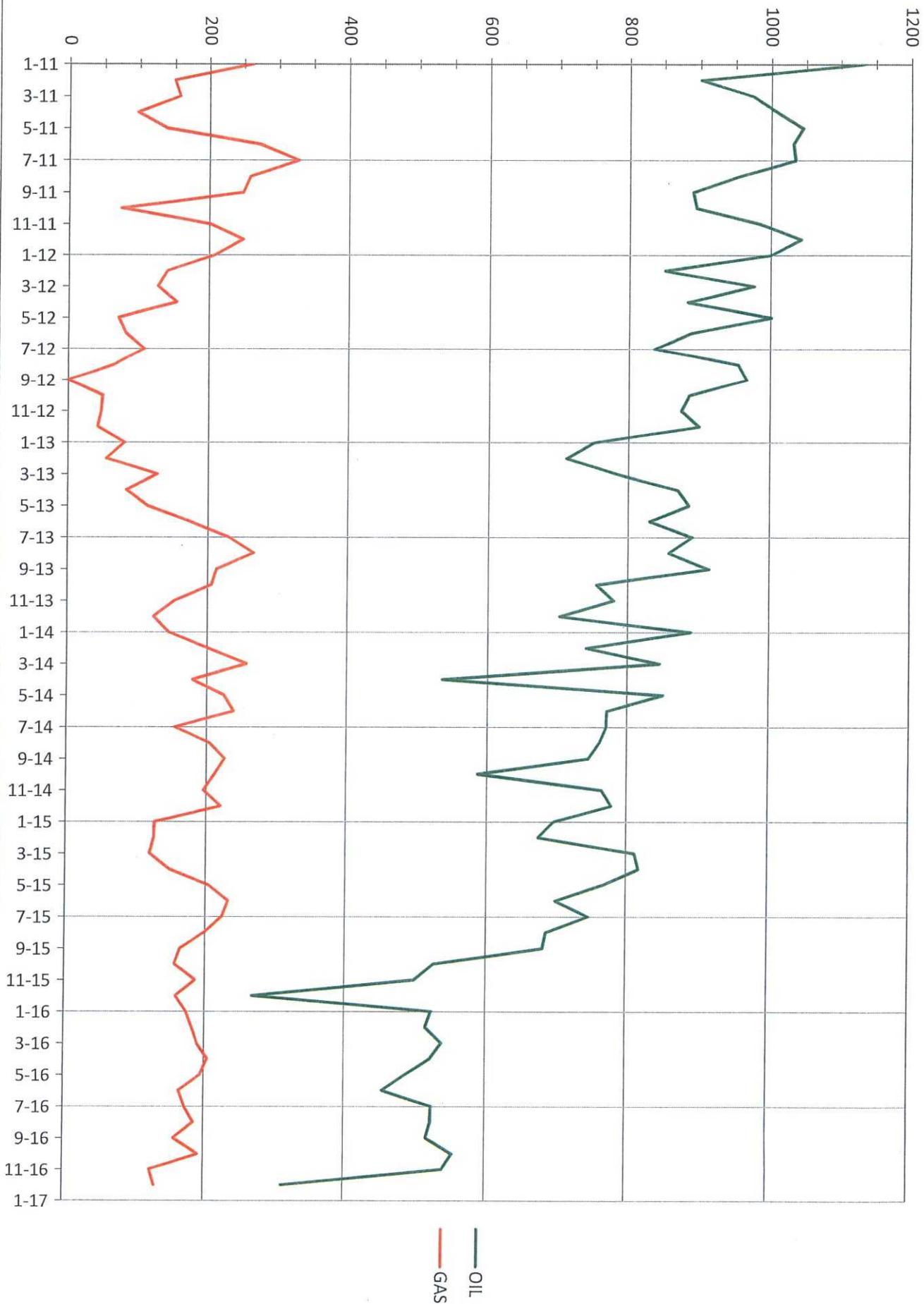
\_\_\_\_\_  
**New Mexico Oil Conservation Division**

\_\_\_\_\_  
**Date**

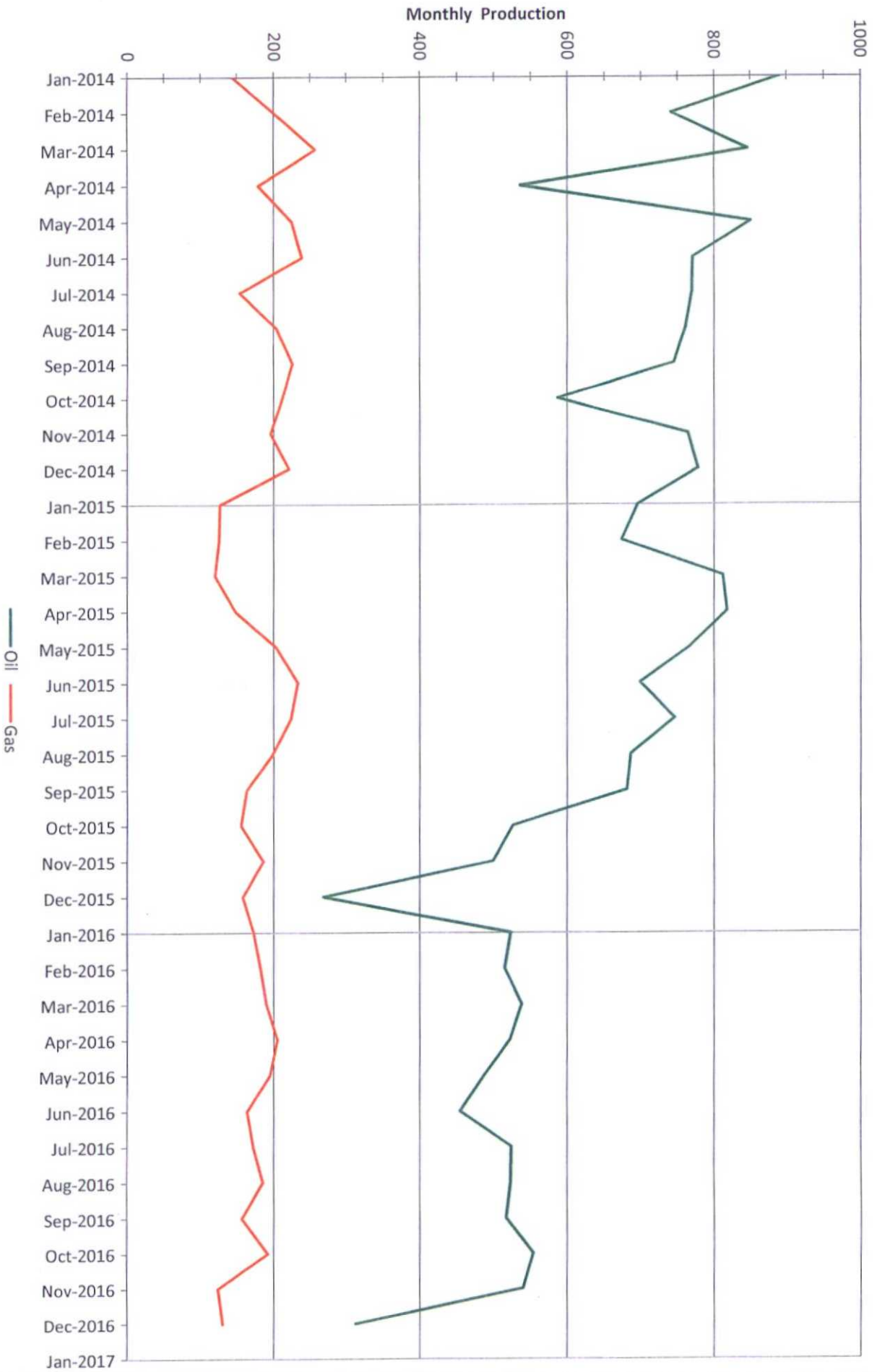
The foregoing approvals are for the 2017 Plan of Development for the East Corbin Federal Delaware Unit, Lea County, New Mexico.

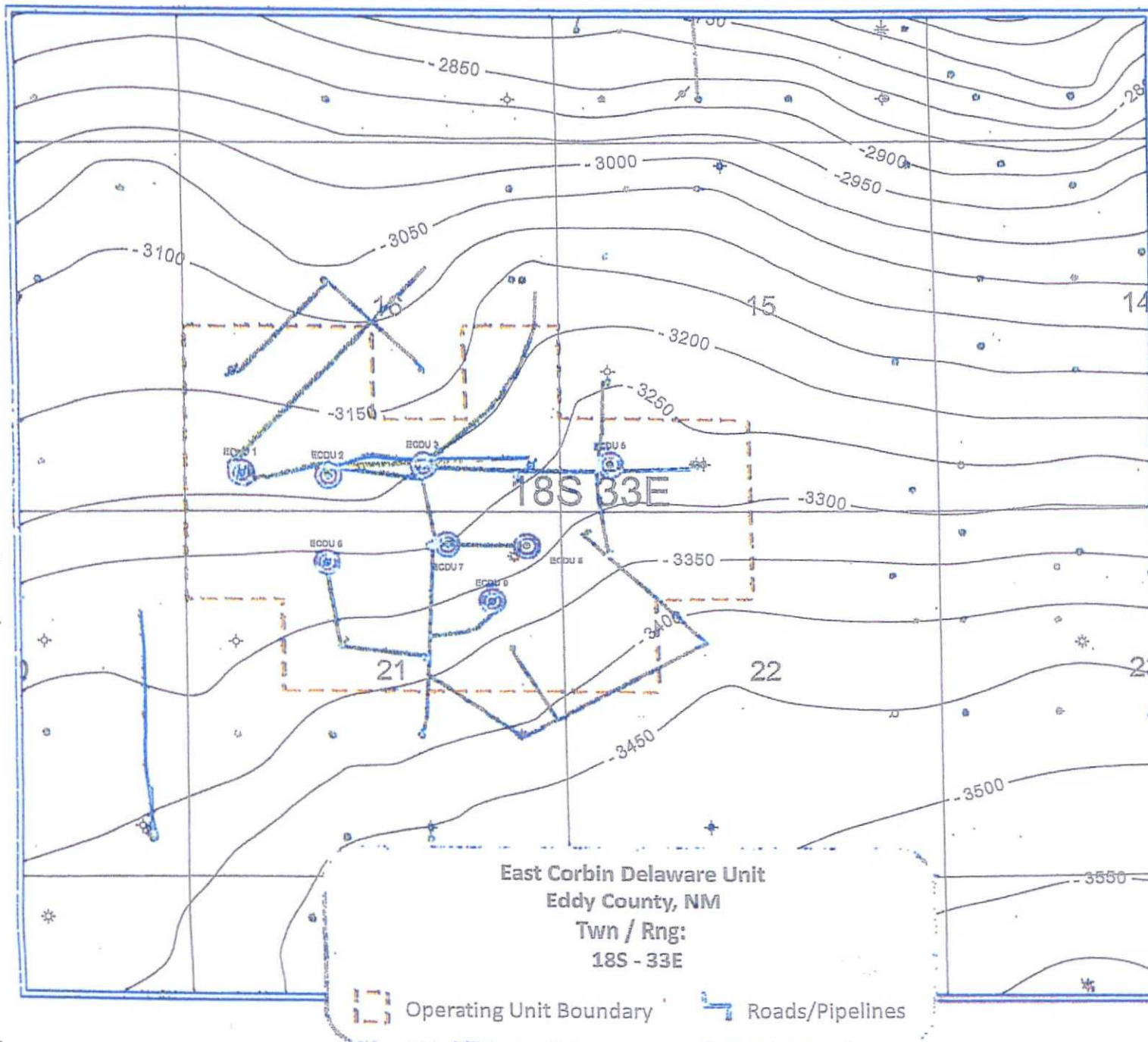
MCF

# East Corbin Federal Delaware Unit



# East Corbin Federal Delaware Unit





East Corbin  
Delaware Unit  
Lea County, NM  
Twn / Rng:  
18S-33E

Structure on  
Top of Bone Spring Lime  
Contour Interval 50 feet

 Operating Unit  
Boundary