



**Occidental Permian Ltd.**  
A subsidiary of Occidental Petroleum Corporation

5 Greenway Plaza, Suite 110, Houston, Texas 77046-0521  
P.O. Box 27570, Houston, Texas 77227-7570  
Phone 713.215.7000

April 4, 2018

Bureau of Land Management  
Carlsbad Field Office  
620 E. Greene St.  
Carlsbad, NM 88220-6292

Case 15103

APR 09 2018 PM03:20

order R-6199F, R-6199G

Re: North Hobbs Grayburg / San Andres Unit  
2018 Plan of Development  
Lea County, NM

To Whom It May Concern:

Occidental Permian Ltd., as Unit Operator of the North Hobbs Grayburg / San Andres Unit (State Unit Agreement NM70997X), hereby submits for your review and approval our proposed 2018 Plan of Development.

In support of this filing, please find the following documentation:

- Planned 2018 activity
- Previous 2017 activity
- Current status of wells within the referenced unit
- Production graph for production reservoir
- Maps of the current geological structure
- Map representing wells, flowlines, and roads

It is understood that acceptance of this plan does not approve the work presented in this plan. Individual approval is still required for such items as APD's, ROW's, etc. Any modifications or additions to the Plan of Development will be filed a supplements to the plan.

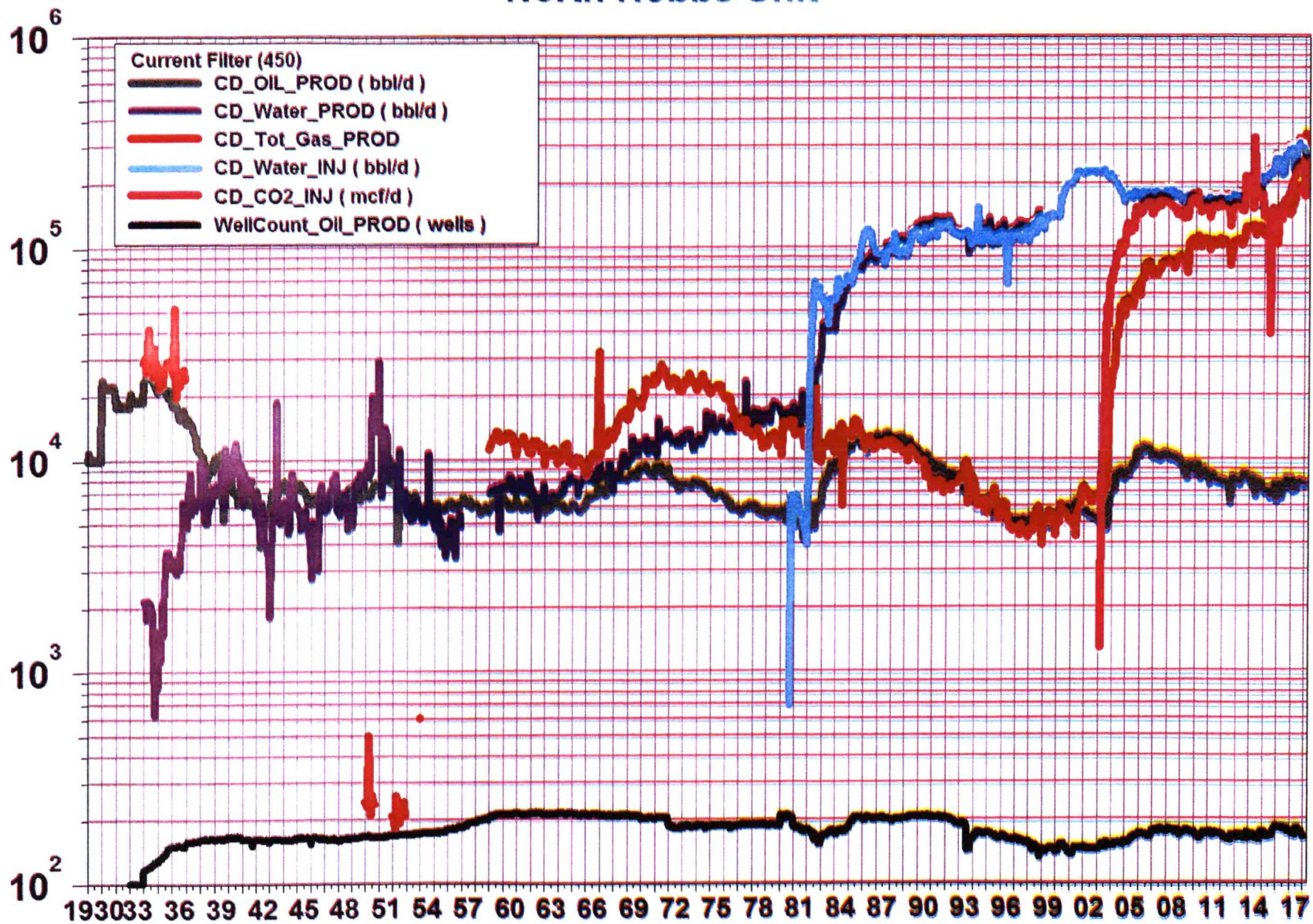
If you have any questions regarding this application, please contact me at 713-366-5771 or email [april\\_hood@oxy.com](mailto:april_hood@oxy.com).

Sincerely,

April Hood  
Regulatory Specialist

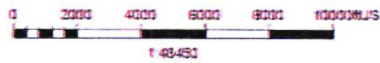
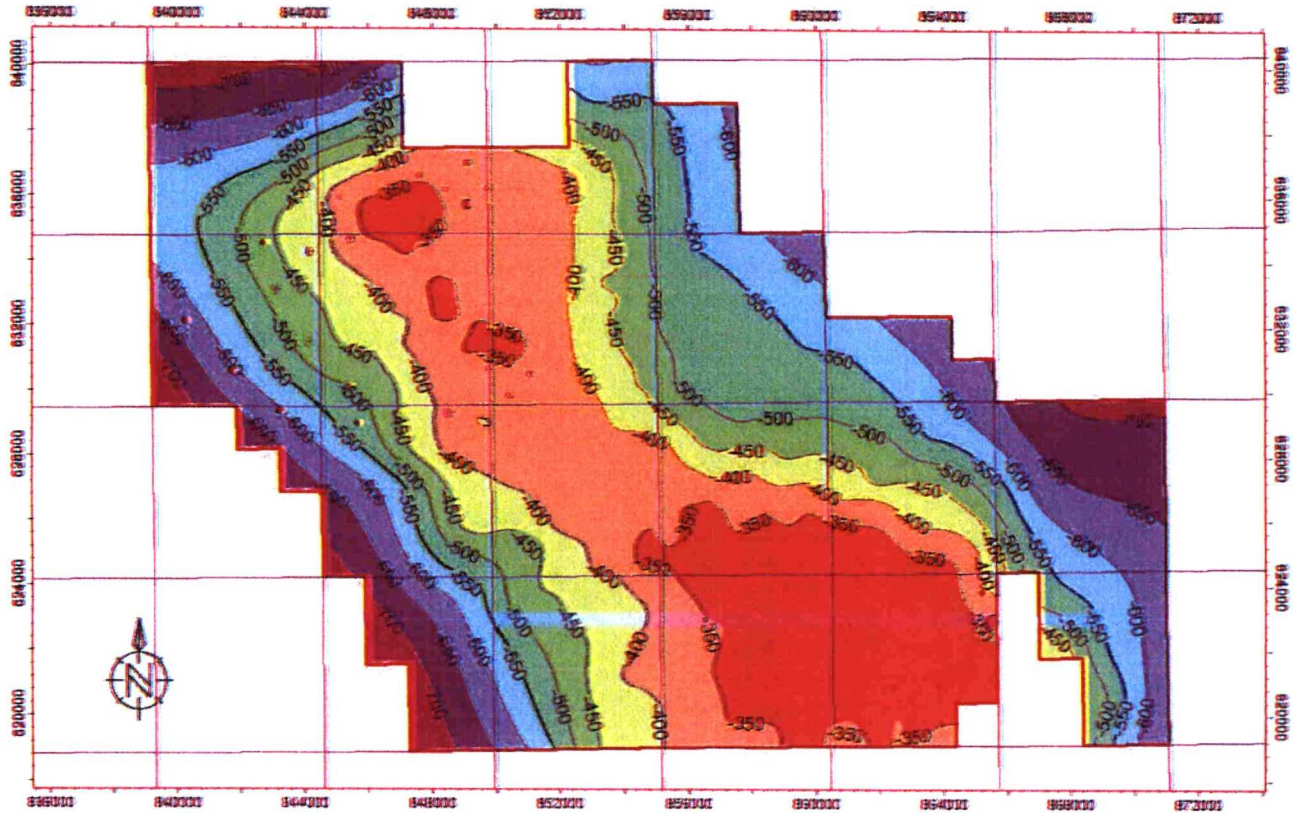
Attachment:

# North Hobbs Unit

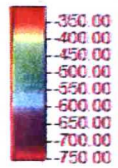


# Top San Andres Geologic Structure Map

## Hobbs Field, Lea Co., NM



Elevation depth [m]



Scale
1:43453
Contour inc
50

### North Hobbs Unit 2018 Planned Well Work

WELL NAME & No.	API No.	Section	Unit Letter	Township	Range	Job Reason	Job Status
NORTH HOBBS /GRYBG-SAN ANDRES/ UT 526-33	3002523334	33	F	18S	38E	Deadman Anchor Testing	Completed
NORTH HOBBS /GRYBG-SAN ANDRES/ UT 141-28	3002512496	28	M	18S	38E	Deadman Anchor Testing	Completed
NORTH HOBBS /GRYBG-SAN ANDRES/ UT 311-31	3002507491	31	B	18S	38E	Deadman Anchor Testing	Completed
NORTH HOBBS /GRYBG-SAN ANDRES/ UT 221-19	3002507355	19	F	18S	38E	Deadman Anchor Testing	Completed
NORTH HOBBS /GRYBG-SAN ANDRES/ UT 321-23	3002505463	23	G	18S	37E	Wireline - BHP/Temp Survey	Completed
NORTH HOBBS /GRYBG-SAN ANDRES/ UT 431-23	3002505467	23	I	18S	37E	Wireline - BHP/Temp Survey	Completed
NORTH HOBBS /GRYBG-SAN ANDRES/ UT 421-30	3002507468	30	H	18S	38E	ESP Upsize	Completed
NORTH HOBBS /GRYBG-SAN ANDRES/ UT 421-30	3002507468	30	H	18S	38E	Deadman Anchor Testing	Completed
NORTH HOBBS /GRYBG-SAN ANDRES/ UT 612-24	3002535450	24	E	18S	37E	Chemical Treatment	Completed
NORTH HOBBS /GRYBG-SAN ANDRES/ UT 631-33	3002534994	33	B	18S	38E	Wireline - Mechanical Services	Completed
NORTH HOBBS /GRYBG-SAN ANDRES/ UT 341-30	3002524665	30	O	18S	38E	ESP Failure	Completed
NORTH HOBBS /GRYBG-SAN ANDRES/ UT 341-30	3002524665	30	O	18S	38E	Deadman Anchor Testing	Completed
NORTH HOBBS /GRYBG-SAN ANDRES/ UT 667-24	3002543606	24	C	18S	37E	Conf - Combination	Completed
NORTH HOBBS /GRYBG-SAN ANDRES/ UT 731-25	3002537481	25	B	18S	37E	ESP Failure	Completed
NORTH HOBBS /GRYBG-SAN ANDRES/ UT 678-24	3002543579	24	L	18S	37E	Conf - Other	Completed
NORTH HOBBS /GRYBG-SAN ANDRES/ UT 693-33	3002543282	33	L	18S	38E	Wireline - BHP/Temp Survey	Completed
NORTH HOBBS /GRYBG-SAN ANDRES/ UT 431-32	3002507537	32	I	18S	38E	Wireline - BHP/Temp Survey	Completed
NORTH HOBBS /GRYBG-SAN ANDRES/ UT 341-32	3002507539	32	O	18S	38E	Wireline - BHP/Temp Survey	Completed
NORTH HOBBS /GRYBG-SAN ANDRES/ UT 432-32	3002526974	32	I	18S	38E	Wireline - BHP/Temp Survey	Completed
NORTH HOBBS /GRYBG-SAN ANDRES/ UT 422-33	3002528268	33	H	18S	38E	Wireline - BHP/Temp Survey	Completed
NORTH HOBBS /GRYBG-SAN ANDRES/ UT 142-33	3002528411	33	M	18S	38E	Wireline - BHP/Temp Survey	Completed
NORTH HOBBS /GRYBG-SAN ANDRES/ UT 834-32	3002535452	32	O	18S	38E	Conf - Cmt - Near Wellbore Squeeze	Completed
NORTH HOBBS /GRYBG-SAN ANDRES/ UT 547-30	3002536242	30	P	18S	38E	Add Perfs (same zone)	Completed
NORTH HOBBS /GRYBG-SAN ANDRES/ UT 547-30	3002536242	30	P	18S	38E	Deadman Anchor Testing	Completed
NORTH HOBBS /GRYBG-SAN ANDRES/ UT 678-24	3002543579	24	L	18S	37E	Wireline - BHP/Temp Survey	Completed
NORTH HOBBS /GRYBG-SAN ANDRES/ UT 657-24	3002543841	24	B	18S	37E	Wireline - BHP/Temp Survey	Completed
NORTH HOBBS /GRYBG-SAN ANDRES/ UT 658-24	3002543842	24	B	18S	37E	Wireline - BHP/Temp Survey	Completed
NORTH HOBBS /GRYBG-SAN ANDRES/ UT 731-25	3002537481	25	B	18S	37E	Deadman Anchor Testing	Completed
NORTH HOBBS /GRYBG-SAN ANDRES/ UT 142-19	3002527138	19	M	18S	38E	Conf - Combination	Completed
NORTH HOBBS /GRYBG-SAN ANDRES/ UT 431-23	3002505467	23	I	18S	37E	Wireline - Mechanical Services	Completed
NORTH HOBBS /GRYBG-SAN ANDRES/ UT 142-19	3002527138	19	M	18S	38E	Deadman Anchor Testing	Completed
NORTH HOBBS /GRYBG-SAN ANDRES/ UT 442-30	3002527001	30	P	18S	38E	Conf - Combination	Completed
NORTH HOBBS /GRYBG-SAN ANDRES/ UT 111-31	3002507511	31	D	18S	38E	ESP Failure	Completed
NORTH HOBBS /GRYBG-SAN ANDRES/ UT 834-32	3002535452	32	O	18S	38E	Deadman Anchor Testing	Completed
NORTH HOBBS /GRYBG-SAN ANDRES/ UT 442-30	3002527001	30	P	18S	38E	Deadman Anchor Testing	Completed
NORTH HOBBS /GRYBG-SAN ANDRES/ UT 222-30	3002526833	30	F	18S	38E	Conf - Mech - Packer	Completed
NORTH HOBBS /GRYBG-SAN ANDRES/ UT 953-18	3002542469	18	P	18S	38E	Conf - Combination	Completed
NORTH HOBBS /GRYBG-SAN ANDRES/ UT 953-18	3002542469	18	P	18S	38E	Deadman Anchor Testing	Completed
NORTH HOBBS /GRYBG-SAN ANDRES/ UT 111-31	3002507511	31	D	18S	38E	Deadman Anchor Testing	Completed
NORTH HOBBS /GRYBG-SAN ANDRES/ UT 211-30	3002507463	30	C	18S	38E	ESP Failure	Completed
NORTH HOBBS /GRYBG-SAN ANDRES/ UT 233-30	3002528942	30	K	18S	38E	Conf - Combination	Completed
NORTH HOBBS /GRYBG-SAN ANDRES/ UT 211-30	3002507463	30	C	18S	38E	Deadman Anchor Testing	Completed
NORTH HOBBS /GRYBG-SAN ANDRES/ UT 121-29	3002507449	29	E	18S	38E	ESP Failure	Completed
NORTH HOBBS /GRYBG-SAN ANDRES/ UT 241-28	3002512498	28	N	18S	38E	ESP Failure	Completed
NORTH HOBBS /GRYBG-SAN ANDRES/ UT 222-30	3002526833	30	F	18S	38E	Deadman Anchor Testing	Completed
NORTH HOBBS /GRYBG-SAN ANDRES/ UT 685-24	3002543847	24	N	18S	37E	Dev Completion - Cased Hole	Completed
NORTH HOBBS /GRYBG-SAN ANDRES/ UT 657-24	3002543841	24	B	18S	37E	Dev Completion - Cased Hole	Completed
NORTH HOBBS /GRYBG-SAN ANDRES/ UT 111-29	3002523919	29	D	18S	38E	Liner Installation	Completed

## North Hobbs Unit 2017 Well Work

WELL NAME & No.	API_NO10	Section	Unit Letter	Township	Range	Job Reason	Job Status
NORTH HOBBS /GRYBG-SAN ANDRES/ UT 233-30	3002528942	30	K	18S	38E	Deadman Anchor Testing	Completed
NORTH HOBBS /GRYBG-SAN ANDRES/ UT 121-29	3002507449	29	E	18S	38E	Deadman Anchor Testing	Completed
NORTH HOBBS /GRYBG-SAN ANDRES/ UT 685-24	3002543847	24	N	18S	37E	Deadman Anchor Testing	Completed
NORTH HOBBS /GRYBG-SAN ANDRES/ UT 960-19	3002543840	19	B	18S	38E	Dev Completion - Cased Hole	Completed
NORTH HOBBS /GRYBG-SAN ANDRES/ UT 960-19	3002543840	19	B	18S	38E	Deadman Anchor Testing	Completed
NORTH HOBBS /GRYBG-SAN ANDRES/ UT 685-24	3002543847	24	N	18S	37E	Original Drilling	Completed
NORTH HOBBS /GRYBG-SAN ANDRES/ UT 132-32	3002527139	32	L	18S	38E	Conf - Other	Completed
NORTH HOBBS /GRYBG-SAN ANDRES/ UT 686-24	3002543580	24	L	18S	37E	Dev Completion - Cased Hole	Completed
NORTH HOBBS /GRYBG-SAN ANDRES/ UT 678-24	3002543579	24	L	18S	37E	Dev Completion - Cased Hole	Completed
NORTH HOBBS /GRYBG-SAN ANDRES/ UT 524-33	3002534993	33	N	18S	38E	ESP Failure	Completed
NORTH HOBBS /GRYBG-SAN ANDRES/ UT 657-24	3002543841	24	B	18S	37E	Original Drilling	Completed
NORTH HOBBS /GRYBG-SAN ANDRES/ UT 678-24	3002543579	24	L	18S	37E	Deadman Anchor Testing	Completed
NORTH HOBBS /GRYBG-SAN ANDRES/ UT 524-33	3002534993	33	N	18S	38E	Deadman Anchor Testing	Completed
NORTH HOBBS /GRYBG-SAN ANDRES/ UT 693-33	3002543282	33	L	18S	38E	Conf - Mech - Plugback/Filler	Completed
NORTH HOBBS /GRYBG-SAN ANDRES/ UT 960-19	3002543840	19	B	18S	38E	Original Drilling	Completed
NORTH HOBBS /GRYBG-SAN ANDRES/ UT 658-24	3002543842	24	B	18S	37E	Dev Completion - Cased Hole	Completed
NORTH HOBBS /GRYBG-SAN ANDRES/ UT 686-24	3002543580	24	L	18S	37E	Deadman Anchor Testing	Completed
NORTH HOBBS /GRYBG-SAN ANDRES/ UT 678-24	3002543579	24	L	18S	37E	Original Drilling	Completed
NORTH HOBBS /GRYBG-SAN ANDRES/ UT 658-24	3002543842	24	B	18S	37E	Original Drilling	Completed
NORTH HOBBS /GRYBG-SAN ANDRES/ UT 431-32	3002507537	32	I	18S	38E	Conf - Other	Completed
NORTH HOBBS /GRYBG-SAN ANDRES/ UT 311-19	3002507369	19	B	18S	38E	Wireline - Logging	Completed
NORTH HOBBS /GRYBG-SAN ANDRES/ UT 411-19	3002507370	19	A	18S	38E	Wireline - Logging	Completed
NORTH HOBBS /GRYBG-SAN ANDRES/ UT 242-24	3002526832	24	N	18S	37E	Wireline - Logging	Completed
NORTH HOBBS /GRYBG-SAN ANDRES/ UT 131-24	3002505484	24	L	18S	37E	Wireline - Logging	Completed
NORTH HOBBS /GRYBG-SAN ANDRES/ UT 686-24	3002543580	24	L	18S	37E	Original Drilling	Completed
NORTH HOBBS /GRYBG-SAN ANDRES/ UT 653-13	3002543846	24	B	18S	37E	Dev Completion - Cased Hole	Completed
NORTH HOBBS /GRYBG-SAN ANDRES/ UT 658-24	3002543842	24	B	18S	37E	Deadman Anchor Testing	Completed
NORTH HOBBS /GRYBG-SAN ANDRES/ UT 653-13	3002543846	24	B	18S	37E	Deadman Anchor Testing	Completed
NORTH HOBBS /GRYBG-SAN ANDRES/ UT 653-13	3002543846	24	B	18S	37E	Original Drilling	Completed
NORTH HOBBS /GRYBG-SAN ANDRES/ UT 211-31	3002507503	31	C	18S	38E	Casing (Mechanical) Integrity Test	Completed
NORTH HOBBS /GRYBG-SAN ANDRES/ UT 657-24	3002543841	24	B	18S	37E	Deadman Anchor Testing	Completed
NORTH HOBBS /GRYBG-SAN ANDRES/ UT 923-29	3002536011	29	K	18S	38E	Producer to Injector	Completed
NORTH HOBBS /GRYBG-SAN ANDRES/ UT 432-32	3002526974	32	I	18S	38E	Conf - Other	Completed
NORTH HOBBS /GRYBG-SAN ANDRES/ UT 958-19	3002542454	19	H	18S	38E	Other	Completed
NORTH HOBBS /GRYBG-SAN ANDRES/ UT 626-29	3002537250	29	K	18S	38E	Acid Dump	Completed
NORTH HOBBS /GRYBG-SAN ANDRES/ UT 232-19	3002529172	19	K	18S	38E	Acid Dump	Completed
NORTH HOBBS /GRYBG-SAN ANDRES/ UT 342-32	3002528266	32	O	18S	38E	Conf - Mech - Plugback/Filler	Completed
NORTH HOBBS /GRYBG-SAN ANDRES/ UT 923-29	3002536011	29	K	18S	38E	Deadman Anchor Testing	Completed
NORTH HOBBS /GRYBG-SAN ANDRES/ UT 142-32	3002528265	32	M	18S	38E	Conf - Other	Completed
NORTH HOBBS /GRYBG-SAN ANDRES/ UT 958-19	3002542454	19	H	18S	38E	Other	Completed
NORTH HOBBS /GRYBG-SAN ANDRES/ UT 142-33	3002528411	33	M	18S	38E	Conf - Other	Completed
NORTH HOBBS /GRYBG-SAN ANDRES/ UT 411-33	3002507556	33	A	18S	38E	Deadman Anchor Testing	Completed
NORTH HOBBS /GRYBG-SAN ANDRES/ UT 111-20	3002507375	20	D	18S	38E	Producer to Injector	Completed
NORTH HOBBS /GRYBG-SAN ANDRES/ UT 342-28	3002529931	33	B	18S	38E	ESP Upsize	Completed
NORTH HOBBS /GRYBG-SAN ANDRES/ UT 432-32	3002526974	32	I	18S	38E	Deadman Anchor Testing	Completed
NORTH HOBBS /GRYBG-SAN ANDRES/ UT 142-32	3002528265	32	M	18S	38E	Deadman Anchor Testing	Completed
NORTH HOBBS /GRYBG-SAN ANDRES/ UT 142-33	3002528411	33	M	18S	38E	Deadman Anchor Testing	Completed
NORTH HOBBS /GRYBG-SAN ANDRES/ UT 341-32	3002507539	32	O	18S	38E	Conf - Combination	Completed
NORTH HOBBS /GRYBG-SAN ANDRES/ UT 211-32	3002507525	32	C	18S	38E	ESP Failure	Completed
NORTH HOBBS /GRYBG-SAN ANDRES/ UT 341-32	3002507539	32	O	18S	38E	Deadman Anchor Testing	Completed
NORTH HOBBS /GRYBG-SAN ANDRES/ UT 111-25	3002505491	25	D	18S	37E	Wireline - Profiles	Completed

## North Hobbs Unit 2017 Well Work

NORTH HOBBS /GRYBG-SAN ANDRES/ UT 211-32	3002507525	32	C	18S	38E	Chemical Treatment	Completed
NORTH HOBBS /GRYBG-SAN ANDRES/ UT 211-32	3002507525	32	C	18S	38E	Deadman Anchor Testing	Completed
NORTH HOBBS /GRYBG-SAN ANDRES/ UT 644-28	3002535349	27	L	18S	38E	Temporarily Abandon	Completed
NORTH HOBBS /GRYBG-SAN ANDRES/ UT 342-28	3002529931	33	B	18S	38E	Deadman Anchor Testing	Completed
NORTH HOBBS /GRYBG-SAN ANDRES/ UT 680-24	3002543073	24	H	18S	37E	Wireline - Profiles	Completed
NORTH HOBBS /GRYBG-SAN ANDRES/ UT 958-19	3002542454	19	H	18S	38E	Add Perfs (same zone)	Completed
NORTH HOBBS /GRYBG-SAN ANDRES/ UT 645-13	3002538518	13	P	18S	37E	Add Perfs (same zone)	Completed
NORTH HOBBS /GRYBG-SAN ANDRES/ UT 617-30	3002537102	30	D	18S	38E	Chemical Treatment	Completed
NORTH HOBBS /GRYBG-SAN ANDRES/ UT 231-29	3002507438	29	K	18S	38E	ESP Failure	Completed
NORTH HOBBS /GRYBG-SAN ANDRES/ UT 231-29	3002507438	29	K	18S	38E	Deadman Anchor Testing	Completed
NORTH HOBBS /GRYBG-SAN ANDRES/ UT 634-29	3002535384	29	O	18S	38E	Chemical Treatment	Completed
NORTH HOBBS /GRYBG-SAN ANDRES/ UT 958-19	3002542454	19	H	18S	38E	Deadman Anchor Testing	Completed
NORTH HOBBS /GRYBG-SAN ANDRES/ UT 431-30	3002507474	30	I	18S	38E	Add Perfs (same zone)	Completed
NORTH HOBBS /GRYBG-SAN ANDRES/ UT 211-28	3002507425	28	C	18S	38E	Return to Injector	Completed
NORTH HOBBS /GRYBG-SAN ANDRES/ UT 431-30	3002507474	30	I	18S	38E	Deadman Anchor Testing	Completed
NORTH HOBBS /GRYBG-SAN ANDRES/ UT 141-19	3002507365	19	M	18S	38E	Add Perfs (same zone)	Completed
NORTH HOBBS /GRYBG-SAN ANDRES/ UT 442-19	3002528881	19	P	18S	38E	Wireline - Profiles	Completed
NORTH HOBBS /GRYBG-SAN ANDRES/ UT 539-24	3002536213	24	J	18S	37E	ESP Failure	Completed
NORTH HOBBS /GRYBG-SAN ANDRES/ UT 121-30	3002507464	30	E	18S	38E	ESP Failure	Completed
NORTH HOBBS /GRYBG-SAN ANDRES/ UT 525-30	3002536216	30	K	18S	38E	ESP Failure	Completed
NORTH HOBBS /GRYBG-SAN ANDRES/ UT 431-25	3002505492	25	I	18S	37E	Wireline - Profiles	Completed
NORTH HOBBS /GRYBG-SAN ANDRES/ UT 667-24	3002543606	24	C	18S	37E	Wireline - Profiles	Completed
NORTH HOBBS /GRYBG-SAN ANDRES/ UT 421-25	3002505504	25	H	18S	37E	Add Perfs (same zone)	Completed
NORTH HOBBS /GRYBG-SAN ANDRES/ UT 422-33	3002528268	33	H	18S	38E	Wireline - Profiles	Completed
NORTH HOBBS /GRYBG-SAN ANDRES/ UT 693-33	3002543282	33	L	18S	38E	Wireline - Profiles	Completed
NORTH HOBBS /GRYBG-SAN ANDRES/ UT 231-25	3002505498	25	K	18S	37E	Return to Injector	Completed
NORTH HOBBS /GRYBG-SAN ANDRES/ UT 638-19	3002538125	19	B	18S	38E	ESP Failure	Completed
NORTH HOBBS /GRYBG-SAN ANDRES/ UT 111-25	3002505491	25	D	18S	37E	Deepening (same zone)	Completed
NORTH HOBBS /GRYBG-SAN ANDRES/ UT 539-24	3002536213	24	J	18S	37E	Other	Completed
NORTH HOBBS /GRYBG-SAN ANDRES/ UT 121-30	3002507464	30	E	18S	38E	Deadman Anchor Testing	Completed
NORTH HOBBS /GRYBG-SAN ANDRES/ UT 638-19	3002538125	19	B	18S	38E	Deadman Anchor Testing	Completed
NORTH HOBBS /GRYBG-SAN ANDRES/ UT 432-33	3002528269	33	I	18S	38E	Wireline - Profiles	Completed
NORTH HOBBS /GRYBG-SAN ANDRES/ UT 539-24	3002536213	24	J	18S	37E	Chemical Treatment	Completed
NORTH HOBBS /GRYBG-SAN ANDRES/ UT 638-19	3002538125	19	B	18S	38E	Chemical Treatment	Completed
NORTH HOBBS /GRYBG-SAN ANDRES/ UT 638-19	3002538125	19	B	18S	38E	Other	Completed
NORTH HOBBS /GRYBG-SAN ANDRES/ UT 833-18	3002540834	18	L	18S	38E	ESP Failure	Completed
NORTH HOBBS /GRYBG-SAN ANDRES/ UT 833-18	3002540834	18	L	18S	38E	Deadman Anchor Testing	Completed
NORTH HOBBS /GRYBG-SAN ANDRES/ UT 638-19	3002538125	19	B	18S	38E	Chemical Treatment	Completed
NORTH HOBBS /GRYBG-SAN ANDRES/ UT 341-25	3002505497	25	O	18S	37E	Deepening (same zone)	Completed
NORTH HOBBS /GRYBG-SAN ANDRES/ UT 613-24	3002535370	24	L	18S	37E	Deepening (same zone)	Completed
NORTH HOBBS /GRYBG-SAN ANDRES/ UT 525-30	3002536216	30	K	18S	38E	Deadman Anchor Testing	Completed
NORTH HOBBS /GRYBG-SAN ANDRES/ UT 613-24	3002535370	24	L	18S	37E	Deadman Anchor Testing	Completed
NORTH HOBBS /GRYBG-SAN ANDRES/ UT 611-24	3002535467	24	D	18S	37E	Deepening (same zone)	Completed
NORTH HOBBS /GRYBG-SAN ANDRES/ UT 341-25	3002505497	25	O	18S	37E	Deadman Anchor Testing	Completed
NORTH HOBBS /GRYBG-SAN ANDRES/ UT 611-24	3002535467	24	D	18S	37E	Deadman Anchor Testing	Completed
NORTH HOBBS /GRYBG-SAN ANDRES/ UT 612-24	3002535450	24	E	18S	37E	Deepening (same zone)	Completed
NORTH HOBBS /GRYBG-SAN ANDRES/ UT 431-25	3002505492	25	I	18S	37E	Packer Failure	Completed
NORTH HOBBS /GRYBG-SAN ANDRES/ UT 441-30	3002507473	30	P	18S	38E	ESP Failure	Completed
NORTH HOBBS /GRYBG-SAN ANDRES/ UT 341-24	3002505490	24	O	18S	37E	Wellhead Repair/Change	Completed
NORTH HOBBS /GRYBG-SAN ANDRES/ UT 211-28	3002507425	28	C	18S	38E	Deadman Anchor Testing	Completed
NORTH HOBBS /GRYBG-SAN ANDRES/ UT 431-25	3002505492	25	I	18S	37E	Deadman Anchor Testing	Completed
NORTH HOBBS /GRYBG-SAN ANDRES/ UT 422-25	3002526933	25	H	18S	37E	Wireline - Profiles	Completed
NORTH HOBBS /GRYBG-SAN ANDRES/ UT 539-24	3002536213	24	J	18S	37E	Deadman Anchor Testing	Completed

## North Hobbs Unit 2017 Well Work

NORTH HOBBS /GRYBG-SAN ANDRES/ UT 111-25	3002505491	25	D	18S	37E	Deadman Anchor Testing	Completed
NORTH HOBBS /GRYBG-SAN ANDRES/ UT 411-36	3002505539	36	A	18S	37E	Wireline - Profiles	Completed
NORTH HOBBS /GRYBG-SAN ANDRES/ UT 441-30	3002507473	30	P	18S	38E	Deadman Anchor Testing	Completed
NORTH HOBBS /GRYBG-SAN ANDRES/ UT 231-25	3002505498	25	K	18S	37E	Deadman Anchor Testing	Completed
NORTH HOBBS /GRYBG-SAN ANDRES/ UT 322-31	3002530204	31	G	18S	38E	Wireline - Profiles	Completed
NORTH HOBBS /GRYBG-SAN ANDRES/ UT 612-24	3002535450	24	E	18S	37E	Deadman Anchor Testing	Completed
NORTH HOBBS /GRYBG-SAN ANDRES/ UT 642-25	3002537105	25	I	18S	37E	Deadman Anchor Testing	Completed
NORTH HOBBS /GRYBG-SAN ANDRES/ UT 233-20	3002527214	20	K	18S	38E	Deadman Anchor Testing	Completed
NORTH HOBBS /GRYBG-SAN ANDRES/ UT 111-20	3002507375	20	D	18S	38E	Deadman Anchor Testing	Completed
NORTH HOBBS /GRYBG-SAN ANDRES/ UT 421-25	3002505504	25	H	18S	37E	Deadman Anchor Testing	Completed
NORTH HOBBS /GRYBG-SAN ANDRES/ UT 141-19	3002507365	19	M	18S	38E	Deadman Anchor Testing	Completed
NORTH HOBBS /GRYBG-SAN ANDRES/ UT 341-25	3002505497	25	O	18S	37E	Wireline - Profiles	Completed
NORTH HOBBS /GRYBG-SAN ANDRES/ UT 233-30	3002528942	30	K	18S	38E	Wireline - Profiles	Completed
NORTH HOBBS /GRYBG-SAN ANDRES/ UT 536-30	3002536286	30	O	18S	38E	Wireline - Profiles	Completed
NORTH HOBBS /GRYBG-SAN ANDRES/ UT 131-28	3002512497	28	L	18S	38E	Wireline - Profiles	Completed
NORTH HOBBS /GRYBG-SAN ANDRES/ UT 321-22	3002512506	32	G	18S	38E	Wireline - Profiles	Completed
NORTH HOBBS /GRYBG-SAN ANDRES/ UT 131-33	3002507544	33	L	18S	38E	Casing Damage	Completed
NORTH HOBBS /GRYBG-SAN ANDRES/ UT 946-18	3002541550	18	O	18S	38E	Deadman Anchor Testing	Completed
NORTH HOBBS /GRYBG-SAN ANDRES/ UT 946-18	3002541550	18	O	18S	38E	ESP Failure	Completed
NORTH HOBBS /GRYBG-SAN ANDRES/ UT 131-33	3002507544	33	L	18S	38E	Deadman Anchor Testing	Completed
NORTH HOBBS /GRYBG-SAN ANDRES/ UT 943-19	3002537435	19	H	18S	38E	Temporarily Abandon	Completed
NORTH HOBBS /GRYBG-SAN ANDRES/ UT 142-28	3002523246	28	M	18S	38E	ESP Failure	Completed
NORTH HOBBS /GRYBG-SAN ANDRES/ UT 142-28	3002523246	28	M	18S	38E	Deadman Anchor Testing	Completed
NORTH HOBBS /GRYBG-SAN ANDRES/ UT 222-29	3002526934	29	F	18S	38E	Wireline - Profiles	Completed
NORTH HOBBS /GRYBG-SAN ANDRES/ UT 341-14	3002505450	14	O	18S	37E	Casing (Mechanical) Integrity Test	Completed
NORTH HOBBS /GRYBG-SAN ANDRES/ UT 141-13	3002505437	13	M	18S	37E	Tubing Failure (Leak)	Completed
NORTH HOBBS /GRYBG-SAN ANDRES/ UT 642-25	3002537105	25	I	18S	37E	Chemical Treatment	Completed
NORTH HOBBS /GRYBG-SAN ANDRES/ UT 712-29	3002537558	29	E	18S	38E	Wireline - Profiles	Completed
NORTH HOBBS /GRYBG-SAN ANDRES/ UT 122-29	3002528953	29	E	18S	38E	Wireline - Profiles	Completed
NORTH HOBBS /GRYBG-SAN ANDRES/ UT 943-19	3002537435	19	H	18S	38E	Deadman Anchor Testing	Completed
NORTH HOBBS /GRYBG-SAN ANDRES/ UT 141-13	3002505437	13	M	18S	37E	Deadman Anchor Testing	Completed
NORTH HOBBS /GRYBG-SAN ANDRES/ UT 311-28	3002507417	28	B	18S	38E	Casing (Mechanical) Integrity Test	Completed
NORTH HOBBS /GRYBG-SAN ANDRES/ UT 222-29	3002526934	29	F	18S	38E	Wireline - Profiles	Completed
NORTH HOBBS /GRYBG-SAN ANDRES/ UT 712-29	3002537558	29	E	18S	38E	Wireline - Profiles	Completed
NORTH HOBBS /GRYBG-SAN ANDRES/ UT 442-24	3002529098	24	P	18S	37E	Acid Dump	Completed
NORTH HOBBS /GRYBG-SAN ANDRES/ UT 211-23	3002505469	23	C	18S	37E	Acid Dump	Completed
NORTH HOBBS /GRYBG-SAN ANDRES/ UT 622-24	3002537152	24	J	18S	37E	Acid Dump	Completed
NORTH HOBBS /GRYBG-SAN ANDRES/ UT 231-23	3002505471	23	K	18S	37E	Acid Dump	Completed
NORTH HOBBS /GRYBG-SAN ANDRES/ UT 341-23	3002505475	23	O	18S	37E	Acid Dump	Completed
NORTH HOBBS /GRYBG-SAN ANDRES/ UT 411-19	3002507370	19	A	18S	38E	Acid Dump	Completed
NORTH HOBBS /GRYBG-SAN ANDRES/ UT 122-29	3002528953	29	E	18S	38E	Wireline - Profiles	Completed
NORTH HOBBS /GRYBG-SAN ANDRES/ UT 141-24	3002505485	24	M	18S	37E	ESP Failure	Completed
NORTH HOBBS /GRYBG-SAN ANDRES/ UT 132-32	3002527139	32	L	18S	38E	Wireline - Profiles	Completed
NORTH HOBBS /GRYBG-SAN ANDRES/ UT 635-29	3002537409	29	I	18S	38E	Wireline - Profiles	Completed
NORTH HOBBS /GRYBG-SAN ANDRES/ UT 411-36	3002505539	36	A	18S	37E	Acid Dump	Completed
NORTH HOBBS /GRYBG-SAN ANDRES/ UT 441-30	3002507473	30	P	18S	38E	Chemical Treatment	Completed
NORTH HOBBS /GRYBG-SAN ANDRES/ UT 232-33	3002526834	33	K	18S	38E	Wireline - Profiles	Completed
NORTH HOBBS /GRYBG-SAN ANDRES/ UT 332-28	3002531655	28	G	18S	38E	Wireline - Profiles	Completed
NORTH HOBBS /GRYBG-SAN ANDRES/ UT 543-33	3002534997	33	H	18S	38E	Acid Dump	Completed
NORTH HOBBS /GRYBG-SAN ANDRES/ UT 668-24	3002543074	24	H	18S	37E	Deadman Anchor Testing	Completed
NORTH HOBBS /GRYBG-SAN ANDRES/ UT 423-32	3002529198	32	H	18S	38E	Acid Dump	Completed
NORTH HOBBS /GRYBG-SAN ANDRES/ UT 536-30	3002536286	30	O	18S	38E	Acid Dump	Completed
NORTH HOBBS /GRYBG-SAN ANDRES/ UT 322-33	3002527169	33	G	18S	38E	Acid Dump	Completed

## North Hobbs Unit 2017 Well Work

NORTH HOBBS /GRYBG-SAN ANDRES/ UT 231-33	3002507545	33	K	18S	38E	Acid Dump	Completed
NORTH HOBBS /GRYBG-SAN ANDRES/ UT 231-28	3002507421	28	K	18S	38E	Acid Dump	Completed
NORTH HOBBS /GRYBG-SAN ANDRES/ UT 321-32	3002512506	32	G	18S	38E	Acid Dump	Completed
NORTH HOBBS /GRYBG-SAN ANDRES/ UT 131-20	3002523206	20	L	18S	38E	Acid Dump	Completed
NORTH HOBBS /GRYBG-SAN ANDRES/ UT 222-29	3002526934	29	F	18S	38E	Acid Dump	Completed
NORTH HOBBS /GRYBG-SAN ANDRES/ UT 212-33	3002529026	33	C	18S	38E	Acid Dump	Completed
NORTH HOBBS /GRYBG-SAN ANDRES/ UT 221-24	3002509876	24	F	18S	37E	Deepening (same zone)	Completed
NORTH HOBBS /GRYBG-SAN ANDRES/ UT 431-13	3002505445	13	I	18S	37E	Wireline - Profiles	Completed
NORTH HOBBS /GRYBG-SAN ANDRES/ UT 241-19	3002507364	19	N	18S	38E	Wireline - Profiles	Completed
NORTH HOBBS /GRYBG-SAN ANDRES/ UT 141-24	3002505485	24	M	18S	37E	Deadman Anchor Testing	Completed
NORTH HOBBS /GRYBG-SAN ANDRES/ UT 956-18	3002542470	18	P	18S	38E	ESP Failure	Completed
NORTH HOBBS /GRYBG-SAN ANDRES/ UT 956-18	3002542470	18	P	18S	38E	Deadman Anchor Testing	Completed
NORTH HOBBS /GRYBG-SAN ANDRES/ UT 638-19	3002538125	19	B	18S	38E	Chemical Treatment	Completed
NORTH HOBBS /GRYBG-SAN ANDRES/ UT 221-29	3002507430	29	F	18S	38E	Return to Producer	Completed
NORTH HOBBS /GRYBG-SAN ANDRES/ UT 321-25	3002505505	25	G	18S	37E	Chemical Treatment	Completed
NORTH HOBBS /GRYBG-SAN ANDRES/ UT 321-25	3002505505	25	G	18S	37E	Chemical Treatment	Completed
NORTH HOBBS /GRYBG-SAN ANDRES/ UT 945-19	3002540859	19	H	18S	38E	Wireline - Profiles	Completed
NORTH HOBBS /GRYBG-SAN ANDRES/ UT 711-29	3002537451	29	C	18S	38E	Wireline - Profiles	Completed
NORTH HOBBS /GRYBG-SAN ANDRES/ UT 321-29	3002507431	29	G	18S	38E	Wireline - Profiles	Completed
NORTH HOBBS /GRYBG-SAN ANDRES/ UT 341-29	3002507445	29	O	18S	38E	ESP Failure	Completed
NORTH HOBBS /GRYBG-SAN ANDRES/ UT 211-28	3002507425	28	C	18S	38E	Casing (Mechanical) Integrity Test	Completed
NORTH HOBBS /GRYBG-SAN ANDRES/ UT 211-36	3002505542	36	C	18S	37E	Acid Dump	Completed
NORTH HOBBS /GRYBG-SAN ANDRES/ UT 231-30	3002507479	30	K	18S	38E	Casing (Mechanical) Integrity Test	Completed
NORTH HOBBS /GRYBG-SAN ANDRES/ UT 342-24	3002529062	24	O	18S	37E	Acid Dump	Completed
NORTH HOBBS /GRYBG-SAN ANDRES/ UT 413-24	3002528414	24	A	18S	37E	Acid Dump	Completed
NORTH HOBBS /GRYBG-SAN ANDRES/ UT 666-24	3002543605	24	C	18S	37E	Dev Completion - Cased Hole	Completed
NORTH HOBBS /GRYBG-SAN ANDRES/ UT 537-32	3002536149	32	B	18S	38E	Return to Producer	Completed
NORTH HOBBS /GRYBG-SAN ANDRES/ UT 411-24	3002523522	24	A	18S	37E	ESP Failure	Completed
NORTH HOBBS /GRYBG-SAN ANDRES/ UT 221-24	3002509876	24	F	18S	37E	Deadman Anchor Testing	Completed
NORTH HOBBS /GRYBG-SAN ANDRES/ UT 667-24	3002543606	24	C	18S	37E	Dev Completion - Cased Hole	Completed
NORTH HOBBS /GRYBG-SAN ANDRES/ UT 537-32	3002536149	32	B	18S	38E	Deadman Anchor Testing	Completed
NORTH HOBBS /GRYBG-SAN ANDRES/ UT 950-18	3002542456	18	P	18S	38E	Wireline - Profiles	Completed
NORTH HOBBS /GRYBG-SAN ANDRES/ UT 666-24	3002543605	24	C	18S	37E	Original Drilling	Completed
NORTH HOBBS /GRYBG-SAN ANDRES/ UT 669-24	3002543039	24	H	18S	37E	Wireline - Profiles	Completed
NORTH HOBBS /GRYBG-SAN ANDRES/ UT 711-29	3002537451	29	C	18S	38E	Add Perfs (same zone)	Completed
NORTH HOBBS /GRYBG-SAN ANDRES/ UT 662-24	3002543604	24	C	18S	37E	Dev Completion - Cased Hole	Completed
NORTH HOBBS /GRYBG-SAN ANDRES/ UT 662-24	3002543604	24	C	18S	37E	Original Drilling	Completed
NORTH HOBBS /GRYBG-SAN ANDRES/ UT 667-24	3002543606	24	C	18S	37E	Deadman Anchor Testing	Completed
NORTH HOBBS /GRYBG-SAN ANDRES/ UT 666-24	3002543605	24	C	18S	37E	Deadman Anchor Testing	Completed
NORTH HOBBS /GRYBG-SAN ANDRES/ UT 341-29	3002507445	29	O	18S	38E	Deadman Anchor Testing	Completed
NORTH HOBBS /GRYBG-SAN ANDRES/ UT 662-24	3002543604	24	C	18S	37E	Deadman Anchor Testing	Completed
NORTH HOBBS /GRYBG-SAN ANDRES/ UT 221-29	3002507430	29	F	18S	38E	Deadman Anchor Testing	Completed
NORTH HOBBS /GRYBG-SAN ANDRES/ UT 711-29	3002537451	29	C	18S	38E	Wireline - Profiles	Completed
NORTH HOBBS /GRYBG-SAN ANDRES/ UT 711-29	3002537451	29	C	18S	38E	Deadman Anchor Testing	Completed
NORTH HOBBS /GRYBG-SAN ANDRES/ UT 667-24	3002543606	24	C	18S	37E	Original Drilling	Completed
NORTH HOBBS /GRYBG-SAN ANDRES/ UT 411-32	3002507516	32	A	18S	38E	Add Perfs (same zone)	Completed
NORTH HOBBS /GRYBG-SAN ANDRES/ UT 411-32	3002507516	32	A	18S	38E	Deadman Anchor Testing	Completed
NORTH HOBBS /GRYBG-SAN ANDRES/ UT 321-23	3002505463	23	G	18S	37E	Packer Failure	Completed
NORTH HOBBS /GRYBG-SAN ANDRES/ UT 431-13	3002505445	13	I	18S	37E	Wireline - Profiles	Completed
NORTH HOBBS /GRYBG-SAN ANDRES/ UT 113-30	3002529064	30	D	18S	38E	Tubing Failure (Leak)	Completed
NORTH HOBBS /GRYBG-SAN ANDRES/ UT 722-31	3002537428	31	B	18S	38E	ESP Upsize	Completed
NORTH HOBBS /GRYBG-SAN ANDRES/ UT 132-32	3002527139	32	L	18S	38E	Wellhead Repair	Completed
NORTH HOBBS /GRYBG-SAN ANDRES/ UT 132-32	3002527139	32	L	18S	38E	Deadman Anchor Testing	Completed



## North Hobbs Unit 2017 Well Work

NORTH HOBBS /GRYBG-SAN ANDRES/ UT 679-24	3002543040	24	H	18S	37E	Wireline - Profiles	Completed
NORTH HOBBS /GRYBG-SAN ANDRES/ UT 945-19	3002540859	19	H	18S	38E	Wireline - Profiles	Completed
NORTH HOBBS /GRYBG-SAN ANDRES/ UT 950-18	3002542456	18	P	18S	38E	Conf - Combination	Completed
NORTH HOBBS /GRYBG-SAN ANDRES/ UT 680-24	3002543073	24	H	18S	37E	Tubing Failure (Leak)	Completed
NORTH HOBBS /GRYBG-SAN ANDRES/ UT 668-24	3002543074	24	H	18S	37E	Wireline - Profiles	Completed
NORTH HOBBS /GRYBG-SAN ANDRES/ UT 687-24	3002543038	24	O	18S	37E	Wireline - Profiles	Completed
NORTH HOBBS /GRYBG-SAN ANDRES/ UT 232-33	3002526834	33	K	18S	38E	Wireline - Profiles	Completed
NORTH HOBBS /GRYBG-SAN ANDRES/ UT 332-28	3002531655	28	G	18S	38E	Wireline - Profiles	Completed
NORTH HOBBS /GRYBG-SAN ANDRES/ UT 635-29	3002537409	29	I	18S	38E	Wireline - Profiles	Completed
NORTH HOBBS /GRYBG-SAN ANDRES/ UT 241-19	3002507364	19	N	18S	38E	Wireline - Profiles	Completed
NORTH HOBBS /GRYBG-SAN ANDRES/ UT 321-23	3002505463	23	G	18S	37E	Deadman Anchor Testing	Completed
NORTH HOBBS /GRYBG-SAN ANDRES/ UT 945-19	3002540859	19	H	18S	38E	Conf - Combination	Completed
NORTH HOBBS /GRYBG-SAN ANDRES/ UT 669-24	3002543039	24	H	18S	37E	Conf - Combination	Completed
NORTH HOBBS /GRYBG-SAN ANDRES/ UT 321-29	3002507431	29	G	18S	38E	Wireline - Profiles	Completed
NORTH HOBBS /GRYBG-SAN ANDRES/ UT 518-18	3002538114	18	M	18S	38E	Wireline - Profiles	Completed
NORTH HOBBS /GRYBG-SAN ANDRES/ UT 668-24	3002543074	24	H	18S	37E	Wireline - Logging	Completed
NORTH HOBBS /GRYBG-SAN ANDRES/ UT 679-24	3002543040	24	H	18S	37E	Wireline - Logging	Completed
NORTH HOBBS /GRYBG-SAN ANDRES/ UT 421-25	3002505504	25	H	18S	37E	Other	Completed
NORTH HOBBS /GRYBG-SAN ANDRES/ UT 687-24	3002543038	24	O	18S	37E	Wireline - Logging	Completed
NORTH HOBBS /GRYBG-SAN ANDRES/ UT 411-36	3002505539	36	A	18S	37E	Casing (Mechanical) Integrity Test	Completed
NORTH HOBBS /GRYBG-SAN ANDRES/ UT 313-30	3002523270	30	B	18S	38E	Casing (Mechanical) Integrity Test	Completed
NORTH HOBBS /GRYBG-SAN ANDRES/ UT 311-28	3002507417	28	B	18S	38E	Casing (Mechanical) Integrity Test	Completed
NORTH HOBBS /GRYBG-SAN ANDRES/ UT 321-24	3002505480	24	G	18S	37E	ESP Failure	Completed
NORTH HOBBS /GRYBG-SAN ANDRES/ UT 543-33	3002534997	33	H	18S	38E	Casing (Mechanical) Integrity Test	Completed
NORTH HOBBS /GRYBG-SAN ANDRES/ UT 331-30	3002507472	30	J	18S	38E	Casing (Mechanical) Integrity Test	Completed
NORTH HOBBS /GRYBG-SAN ANDRES/ UT 132-29	3002526917	29	L	18S	38E	Casing (Mechanical) Integrity Test	Completed
NORTH HOBBS /GRYBG-SAN ANDRES/ UT 131-20	3002523206	20	L	18S	38E	Casing (Mechanical) Integrity Test	Completed
NORTH HOBBS /GRYBG-SAN ANDRES/ UT 631-33	3002534994	33	B	18S	38E	Casing (Mechanical) Integrity Test	Completed
NORTH HOBBS /GRYBG-SAN ANDRES/ UT 432-32	3002526974	32	I	18S	38E	Casing (Mechanical) Integrity Test	Completed
NORTH HOBBS /GRYBG-SAN ANDRES/ UT 423-32	3002529198	32	H	18S	38E	Casing (Mechanical) Integrity Test	Completed
NORTH HOBBS /GRYBG-SAN ANDRES/ UT 331-32	3002507538	32	J	18S	38E	Casing (Mechanical) Integrity Test	Completed
NORTH HOBBS /GRYBG-SAN ANDRES/ UT 323-32	3002526973	32	G	18S	38E	Casing (Mechanical) Integrity Test	Completed
NORTH HOBBS /GRYBG-SAN ANDRES/ UT 521-33	3002534643	33	C	18S	38E	ESP Failure	Completed
NORTH HOBBS /GRYBG-SAN ANDRES/ UT 212-33	3002529026	33	C	18S	38E	Casing (Mechanical) Integrity Test	Completed
NORTH HOBBS /GRYBG-SAN ANDRES/ UT 132-32	3002527139	32	L	18S	38E	Casing (Mechanical) Integrity Test	Completed
NORTH HOBBS /GRYBG-SAN ANDRES/ UT 622-24	3002537152	24	J	18S	37E	Casing (Mechanical) Integrity Test	Completed
NORTH HOBBS /GRYBG-SAN ANDRES/ UT 121-24	3002505476	24	E	18S	37E	Casing (Mechanical) Integrity Test	Completed
NORTH HOBBS /GRYBG-SAN ANDRES/ UT 431-23	3002505467	23	I	18S	37E	Casing (Mechanical) Integrity Test	Completed
NORTH HOBBS /GRYBG-SAN ANDRES/ UT 521-33	3002534643	33	C	18S	38E	Deadman Anchor Testing	Completed
NORTH HOBBS /GRYBG-SAN ANDRES/ UT 311-19	3002507369	19	B	18S	38E	Casing (Mechanical) Integrity Test	Completed
NORTH HOBBS /GRYBG-SAN ANDRES/ UT 231-19	3002507362	19	K	18S	38E	Casing (Mechanical) Integrity Test	Completed
NORTH HOBBS /GRYBG-SAN ANDRES/ UT 950-18	3002542456	18	P	18S	38E	Deadman Anchor Testing	Completed
NORTH HOBBS /GRYBG-SAN ANDRES/ UT 142-19	3002527138	19	M	18S	38E	Casing (Mechanical) Integrity Test	Completed
NORTH HOBBS /GRYBG-SAN ANDRES/ UT 511-33	3002534906	33	D	18S	38E	ESP Failure	Completed
NORTH HOBBS /GRYBG-SAN ANDRES/ UT 231-14	3002505451	14	K	18S	37E	Casing (Mechanical) Integrity Test	Completed
NORTH HOBBS /GRYBG-SAN ANDRES/ UT 121-13	3002505440	13	E	18S	37E	Casing (Mechanical) Integrity Test	Completed
NORTH HOBBS /GRYBG-SAN ANDRES/ UT 722-31	3002537428	31	B	18S	38E	ESP Upsize	Completed
NORTH HOBBS /GRYBG-SAN ANDRES/ UT 321-29	3002507431	29	G	18S	38E	Conf - Combination	Completed
NORTH HOBBS /GRYBG-SAN ANDRES/ UT 722-31	3002537428	31	B	18S	38E	Deadman Anchor Testing	Completed
NORTH HOBBS /GRYBG-SAN ANDRES/ UT 321-29	3002507431	29	G	18S	38E	Deadman Anchor Testing	Completed
NORTH HOBBS /GRYBG-SAN ANDRES/ UT 945-19	3002540859	19	H	18S	38E	Deadman Anchor Testing	Completed
NORTH HOBBS /GRYBG-SAN ANDRES/ UT 518-18	3002538114	18	M	18S	38E	Conf - Combination	Completed
NORTH HOBBS /GRYBG-SAN ANDRES/ UT 518-18	3002538114	18	M	18S	38E	Deadman Anchor Testing	Completed

## North Hobbs Unit 2017 Well Work

NORTH HOBBS /GRYBG-SAN ANDRES/ UT 411-24	3002523522	24	A	18S	37E	ESP Failure	Completed
NORTH HOBBS /GRYBG-SAN ANDRES/ UT 111-24	3002505477	24	D	18S	37E	Wireline - Profiles	Completed
NORTH HOBBS /GRYBG-SAN ANDRES/ UT 241-29	3002507437	29	N	18S	38E	Wireline - Profiles	Completed
NORTH HOBBS /GRYBG-SAN ANDRES/ UT 242-29	3002528413	29	N	18S	38E	Wireline - Profiles	Completed
NORTH HOBBS /GRYBG-SAN ANDRES/ UT 222-33	3002526975	33	F	18S	38E	Wireline - Profiles	Completed
NORTH HOBBS /GRYBG-SAN ANDRES/ UT 131-32	3002507527	32	L	18S	38E	Wireline - Profiles	Completed
NORTH HOBBS /GRYBG-SAN ANDRES/ UT 132-32	3002527139	32	L	18S	38E	Wireline - Profiles	Completed
NORTH HOBBS /GRYBG-SAN ANDRES/ UT 121-24	3002505476	24	E	18S	37E	Wireline - Logging	Completed
NORTH HOBBS /GRYBG-SAN ANDRES/ UT 131-24	3002505484	24	L	18S	37E	Wireline - Logging	Completed
NORTH HOBBS /GRYBG-SAN ANDRES/ UT 638-19	3002538125	19	B	18S	38E	ESP Failure	Completed
NORTH HOBBS /GRYBG-SAN ANDRES/ UT 412-33	3002529932	33	A	18S	38E	ESP Failure	Completed
NORTH HOBBS /GRYBG-SAN ANDRES/ UT 222-33	3002526975	33	F	18S	38E	Acid Dump	Completed
NORTH HOBBS /GRYBG-SAN ANDRES/ UT 221-28	3002507429	28	F	18S	38E	Acid Dump	Completed
NORTH HOBBS /GRYBG-SAN ANDRES/ UT 241-29	3002507437	29	N	18S	38E	Acid Dump	Completed
NORTH HOBBS /GRYBG-SAN ANDRES/ UT 142-33	3002528411	33	M	18S	38E	Acid Dump	Completed
NORTH HOBBS /GRYBG-SAN ANDRES/ UT 132-32	3002527139	32	L	18S	38E	Acid Dump	Completed
NORTH HOBBS /GRYBG-SAN ANDRES/ UT 131-32	3002507527	32	L	18S	38E	Acid Dump	Completed
NORTH HOBBS /GRYBG-SAN ANDRES/ UT 441-24	3002505486	24	P	18S	37E	Wellhead Repair	Completed
NORTH HOBBS /GRYBG-SAN ANDRES/ UT 673-19	3002543058	24	H	18S	37E	Wellhead Repair/Change	Completed
NORTH HOBBS /GRYBG-SAN ANDRES/ UT 411-24	3002523522	24	A	18S	37E	Chemical Treatment	Completed
NORTH HOBBS /GRYBG-SAN ANDRES/ UT 645-13	3002538518	13	P	18S	37E	Chemical Treatment	Completed
NORTH HOBBS /GRYBG-SAN ANDRES/ UT 663-24	3002543026	24	B	18S	37E	Chemical Treatment	Completed
NORTH HOBBS /GRYBG-SAN ANDRES/ UT 615-19	3002537127	19	D	18S	38E	Chemical Treatment	Completed
NORTH HOBBS /GRYBG-SAN ANDRES/ UT 638-19	3002538125	19	B	18S	38E	Chemical Treatment	Completed
NORTH HOBBS /GRYBG-SAN ANDRES/ UT 957-18	3002542471	18	P	18S	38E	ESP Failure	Completed
NORTH HOBBS /GRYBG-SAN ANDRES/ UT 241-29	3002507437	29	N	18S	38E	Flow Back	Completed
NORTH HOBBS /GRYBG-SAN ANDRES/ UT 211-36	3002505542	36	C	18S	37E	Wellhead Repair	Completed
NORTH HOBBS /GRYBG-SAN ANDRES/ UT 421-23	3002505466	23	H	18S	37E	Liner Installation	Completed
NORTH HOBBS /GRYBG-SAN ANDRES/ UT 421-31	3002507493	31	H	18S	38E	ESP Upsize	Completed
NORTH HOBBS /GRYBG-SAN ANDRES/ UT 141-31	3002507510	31	M	18S	38E	Casing (Mechanical) Integrity Test	Completed
NORTH HOBBS /GRYBG-SAN ANDRES/ UT 221-29	3002507430	29	F	18S	38E	Casing (Mechanical) Integrity Test	Completed
NORTH HOBBS /GRYBG-SAN ANDRES/ UT 312-24	3002529130	24	B	18S	37E	Casing (Mechanical) Integrity Test	Completed
NORTH HOBBS /GRYBG-SAN ANDRES/ UT 221-20	3002507377	20	F	18S	38E	Casing (Mechanical) Integrity Test	Completed
NORTH HOBBS /GRYBG-SAN ANDRES/ UT 241-18	3002507338	18	N	18S	38E	Casing (Mechanical) Integrity Test	Completed
NORTH HOBBS /GRYBG-SAN ANDRES/ UT 624-29	3002534870	29	N	18S	38E	ESP Failure	Completed
NORTH HOBBS /GRYBG-SAN ANDRES/ UT 643-29	3002535376	29	I	18S	38E	Wellhead Repair	Completed
NORTH HOBBS /GRYBG-SAN ANDRES/ UT 624-29	3002534870	29	N	18S	38E	Deadman Anchor Testing	Completed
NORTH HOBBS /GRYBG-SAN ANDRES/ UT 111-24	3002505477	24	D	18S	37E	Conf - Other	Completed
NORTH HOBBS /GRYBG-SAN ANDRES/ UT 421-31	3002507493	31	H	18S	38E	Deadman Anchor Testing	Completed
NORTH HOBBS /GRYBG-SAN ANDRES/ UT 643-29	3002535376	29	I	18S	38E	Deadman Anchor Testing	Completed
NORTH HOBBS /GRYBG-SAN ANDRES/ UT 131-13	3002505448	13	L	18S	37E	Casing (Mechanical) Integrity Test	Completed
NORTH HOBBS /GRYBG-SAN ANDRES/ UT 944-29	3002535999	29	I	18S	38E	Casing (Mechanical) Integrity Test	Completed
NORTH HOBBS /GRYBG-SAN ANDRES/ UT 412-23	3002505468	23	A	18S	37E	Casing (Mechanical) Integrity Test	Completed
NORTH HOBBS /GRYBG-SAN ANDRES/ UT 663-24	3002543026	24	B	18S	37E	ESP Failure	Completed
NORTH HOBBS /GRYBG-SAN ANDRES/ UT 222-30	3002526833	30	F	18S	38E	Wireline - Profiles	Completed
NORTH HOBBS /GRYBG-SAN ANDRES/ UT 131-20	3002523206	20	L	18S	38E	Wireline - Profiles	Completed
NORTH HOBBS /GRYBG-SAN ANDRES/ UT 241-19	3002507364	19	N	18S	38E	Acid Dump	Completed
NORTH HOBBS /GRYBG-SAN ANDRES/ UT 543-33	3002534997	33	H	18S	38E	Wireline - Profiles	Completed
NORTH HOBBS /GRYBG-SAN ANDRES/ UT 442-24	3002529098	24	P	18S	37E	Wireline - Profiles	Completed
NORTH HOBBS /GRYBG-SAN ANDRES/ UT 635-29	3002537409	29	I	18S	38E	Acid Dump	Completed
NORTH HOBBS /GRYBG-SAN ANDRES/ UT 332-28	3002531655	28	G	18S	38E	Acid Dump	Completed
NORTH HOBBS /GRYBG-SAN ANDRES/ UT 321-29	3002507431	29	G	18S	38E	Wireline - Profiles	Completed
NORTH HOBBS /GRYBG-SAN ANDRES/ UT 432-32	3002526974	32	I	18S	38E	Wireline - Profiles	Completed

### North Hobbs Unit 2017 Well Work

NORTH HOBBS /GRYBG-SAN ANDRES/ UT 232-33	3002526834	33	K	18S	38E	Acid Dump	Completed
NORTH HOBBS /GRYBG-SAN ANDRES/ UT 322-31	3002530204	31	G	18S	38E	Acid Dump	Completed
NORTH HOBBS /GRYBG-SAN ANDRES/ UT 111-24	3002505477	24	D	18S	37E	Deadman Anchor Testing	Completed
NORTH HOBBS /GRYBG-SAN ANDRES/ UT 411-24	3002523522	24	A	18S	37E	ESP Failure	Completed
NORTH HOBBS /GRYBG-SAN ANDRES/ UT 421-23	3002505466	23	H	18S	37E	ESP Failure	Completed
NORTH HOBBS /GRYBG-SAN ANDRES/ UT 321-24	3002505480	24	G	18S	37E	ESP Failure	Completed
NORTH HOBBS /GRYBG-SAN ANDRES/ UT 638-19	3002538125	19	B	18S	38E	Other	Completed
NORTH HOBBS /GRYBG-SAN ANDRES/ UT 342-32	3002528266	32	O	18S	38E	Wireline - Profiles	Completed
NORTH HOBBS /GRYBG-SAN ANDRES/ UT 341-32	3002507539	32	O	18S	38E	Wireline - Profiles	Completed
NORTH HOBBS /GRYBG-SAN ANDRES/ UT 669-24	3002543039	24	H	18S	37E	Wireline - Profiles	Completed
NORTH HOBBS /GRYBG-SAN ANDRES/ UT 241-28	3002512498	28	N	18S	38E	ESP Failure	Completed
NORTH HOBBS /GRYBG-SAN ANDRES/ UT 421-23	3002505466	23	H	18S	37E	Deadman Anchor Testing	Completed
NORTH HOBBS /GRYBG-SAN ANDRES/ UT 241-28	3002512498	28	N	18S	38E	Deadman Anchor Testing	Completed
NORTH HOBBS /GRYBG-SAN ANDRES/ UT 312-24	3002529130	24	B	18S	37E	Tubing Failure (Leak)	Completed
NORTH HOBBS /GRYBG-SAN ANDRES/ UT 634-29	3002535384	29	O	18S	38E	ESP Failure	Completed
NORTH HOBBS /GRYBG-SAN ANDRES/ UT 321-28	3002507416	28	G	18S	38E	ESP Failure	Completed

### North Hobbs Unit Current Well Listing and Status

WELL NAME & No.	API No.	Completion Date	Zone	CURR_COMP_TYPE	CURR_COMP_STATUS
NORTH HOBBS /GRYBG-SAN ANDRES/ UT 111-19	3002507356	09/1932	Grayburg-San Andres	Producer	P & A
NORTH HOBBS /GRYBG-SAN ANDRES/ UT 111-20	3002507375	10/1932	Grayburg-San Andres	Injector	ACTIVE
NORTH HOBBS /GRYBG-SAN ANDRES/ UT 111-24	3002505477	08/1935	Grayburg-San Andres	Injector	ACTIVE
NORTH HOBBS /GRYBG-SAN ANDRES/ UT 111-25	3002505491	04/1957	Grayburg-San Andres	Injector	ACTIVE
NORTH HOBBS /GRYBG-SAN ANDRES/ UT 111-27	3002523375	02/1970	Grayburg-San Andres	Injector	P & A
NORTH HOBBS /GRYBG-SAN ANDRES/ UT 111-28	3002507422	07/1934	Grayburg-San Andres	Injector	ACTIVE
NORTH HOBBS /GRYBG-SAN ANDRES/ UT 111-29	3002523919	12/1971	Grayburg-San Andres	Producer	ACTIVE
NORTH HOBBS /GRYBG-SAN ANDRES/ UT 111-30	3002507077	07/1930	Grayburg-San Andres	Injector	ACTIVE
NORTH HOBBS /GRYBG-SAN ANDRES/ UT 111-31	3002507511	11/1930	Grayburg-San Andres	Producer	ACTIVE
NORTH HOBBS /GRYBG-SAN ANDRES/ UT 111-32	3002507528	12/1947	Grayburg-San Andres	Producer	ACTIVE
NORTH HOBBS /GRYBG-SAN ANDRES/ UT 111-33	3002512505	09/1930	Grayburg-San Andres	Injector	ACTIVE
NORTH HOBBS /GRYBG-SAN ANDRES/ UT 112-19	3002507358	05/1952	Grayburg-San Andres	Injector	ACTIVE
NORTH HOBBS /GRYBG-SAN ANDRES/ UT 112-30	3002529063	03/1985	Grayburg-San Andres	Injector	ACTIVE
NORTH HOBBS /GRYBG-SAN ANDRES/ UT 112-32	3002507526	06/1934	Grayburg-San Andres	Injector	ACTIVE
NORTH HOBBS /GRYBG-SAN ANDRES/ UT 113-30	3002529064	01/1985	Grayburg-San Andres	Injector	ACTIVE
NORTH HOBBS /GRYBG-SAN ANDRES/ UT 114-33	3002523207	09/1930	Grayburg-San Andres	Producer	TA
NORTH HOBBS /GRYBG-SAN ANDRES/ UT 121-13	3002505440	06/1957	Grayburg-San Andres	Producer	TA
NORTH HOBBS /GRYBG-SAN ANDRES/ UT 121-17	3002507333	12/1961	Grayburg-San Andres	Producer	P & A
NORTH HOBBS /GRYBG-SAN ANDRES/ UT 121-19	3002507357	09/1930	Grayburg-San Andres	Producer	ACTIVE
NORTH HOBBS /GRYBG-SAN ANDRES/ UT 121-20	3002507378	02/1933	Grayburg-San Andres	Producer	P & A
NORTH HOBBS /GRYBG-SAN ANDRES/ UT 121-23	3002505462	12/1959	Grayburg-San Andres	Producer	P & A
NORTH HOBBS /GRYBG-SAN ANDRES/ UT 121-24	3002505476	01/1935	Grayburg-San Andres	Injector	ACTIVE
NORTH HOBBS /GRYBG-SAN ANDRES/ UT 121-25	3002505502	01/1958	Grayburg-San Andres	Injector	P & A
NORTH HOBBS /GRYBG-SAN ANDRES/ UT 121-27	3002512494	06/1936	Grayburg-San Andres	Producer	ACTIVE
NORTH HOBBS /GRYBG-SAN ANDRES/ UT 121-28	3002507420	09/1930	Grayburg-San Andres	Producer	ACTIVE
NORTH HOBBS /GRYBG-SAN ANDRES/ UT 121-29	3002507449	03/1947	Grayburg-San Andres	Producer	ACTIVE
NORTH HOBBS /GRYBG-SAN ANDRES/ UT 121-30	3002507464	09/1930	Grayburg-San Andres	Producer	ACTIVE
NORTH HOBBS /GRYBG-SAN ANDRES/ UT 121-31	3002507514	04/1949	Grayburg-San Andres	Injector	ACTIVE
NORTH HOBBS /GRYBG-SAN ANDRES/ UT 121-32	3002523007	05/1969	Grayburg-San Andres	Producer	ACTIVE
NORTH HOBBS /GRYBG-SAN ANDRES/ UT 121-33	3002507559	08/1930	Grayburg-San Andres	Producer	ACTIVE
NORTH HOBBS /GRYBG-SAN ANDRES/ UT 122-28	3002528964	12/1984	Grayburg-San Andres	Producer	ACTIVE
NORTH HOBBS /GRYBG-SAN ANDRES/ UT 122-29	3002528953	12/1984	Grayburg-San Andres	Injector	ACTIVE
NORTH HOBBS /GRYBG-SAN ANDRES/ UT 123-33	3002523263	10/1997	Grayburg-San Andres	Producer	ACTIVE
NORTH HOBBS /GRYBG-SAN ANDRES/ UT 131-13	3002505448	04/1961	Grayburg-San Andres	Producer	TA
NORTH HOBBS /GRYBG-SAN ANDRES/ UT 131-17	3002507336	07/1957	Grayburg-San Andres	Injector	P & A
NORTH HOBBS /GRYBG-SAN ANDRES/ UT 131-18	3002507339	06/1933	Grayburg-San Andres	Producer	P & A
NORTH HOBBS /GRYBG-SAN ANDRES/ UT 131-19	3002507361	05/1946	Grayburg-San Andres	Injector	ACTIVE
NORTH HOBBS /GRYBG-SAN ANDRES/ UT 131-20	3002523206	07/1969	Grayburg-San Andres	Injector	ACTIVE
NORTH HOBBS /GRYBG-SAN ANDRES/ UT 131-21	3002507393	11/1935	Grayburg-San Andres	Producer	P & A
NORTH HOBBS /GRYBG-SAN ANDRES/ UT 131-24	3002505484	04/1935	Grayburg-San Andres	Injector	ACTIVE
NORTH HOBBS /GRYBG-SAN ANDRES/ UT 131-27	3002507410	06/1935	Grayburg-San Andres	Producer	ACTIVE
NORTH HOBBS /GRYBG-SAN ANDRES/ UT 131-28	3002512497	09/1930	Grayburg-San Andres	Injector	ACTIVE
NORTH HOBBS /GRYBG-SAN ANDRES/ UT 131-29	3002507447	10/1930	Grayburg-San Andres	Producer	ACTIVE
NORTH HOBBS /GRYBG-SAN ANDRES/ UT 131-30	3002507481	10/1930	Grayburg-San Andres	Injector	ACTIVE
NORTH HOBBS /GRYBG-SAN ANDRES/ UT 131-31	3002507509	10/1949	Grayburg-San Andres	Producer	TA
NORTH HOBBS /GRYBG-SAN ANDRES/ UT 131-32	3002507527	09/1934	Grayburg-San Andres	Injector	ACTIVE
NORTH HOBBS /GRYBG-SAN ANDRES/ UT 131-33	3002507544	09/1930	Grayburg-San Andres	Producer	ACTIVE
NORTH HOBBS /GRYBG-SAN ANDRES/ UT 132-28	3002523277	10/1969	Grayburg-San Andres	Producer	ACTIVE
NORTH HOBBS /GRYBG-SAN ANDRES/ UT 132-29	3002526917	12/1980	Grayburg-San Andres	Injector	ACTIVE
NORTH HOBBS /GRYBG-SAN ANDRES/ UT 132-32	3002527139	05/1981	Grayburg-San Andres	Injector	ACTIVE
NORTH HOBBS /GRYBG-SAN ANDRES/ UT 141-13	3002505437	09/1935	Grayburg-San Andres	Injector	ACTIVE

### North Hobbs Unit Current Well Listing and Status

NORTH HOBBS /GRYBG-SAN ANDRES/ UT 141-17	3002507335	03/1933	Grayburg-San Andres	Producer	P & A
NORTH HOBBS /GRYBG-SAN ANDRES/ UT 141-18	3002507337	06/1932	Grayburg-San Andres	Producer	P & A
NORTH HOBBS /GRYBG-SAN ANDRES/ UT 141-19	3002507365	06/1930	Grayburg-San Andres	Producer	ACTIVE
NORTH HOBBS /GRYBG-SAN ANDRES/ UT 141-20	3002507383	11/1932	Grayburg-San Andres	Producer	ACTIVE
NORTH HOBBS /GRYBG-SAN ANDRES/ UT 141-21	3002507390	01/1935	Grayburg-San Andres	Producer	SHUT-IN
NORTH HOBBS /GRYBG-SAN ANDRES/ UT 141-24	3002505485	10/1935	Grayburg-San Andres	Producer	INACTIVE
NORTH HOBBS /GRYBG-SAN ANDRES/ UT 141-27	3002507408	10/1934	Grayburg-San Andres	Producer	ACTIVE
NORTH HOBBS /GRYBG-SAN ANDRES/ UT 141-28	3002512496	09/1930	Grayburg-San Andres	Producer	ACTIVE
NORTH HOBBS /GRYBG-SAN ANDRES/ UT 141-29	3002507448	08/1930	Grayburg-San Andres	Injector	ACTIVE
NORTH HOBBS /GRYBG-SAN ANDRES/ UT 141-30	3002507487	10/1955	Grayburg-San Andres	Producer	ACTIVE
NORTH HOBBS /GRYBG-SAN ANDRES/ UT 141-31	3002507510	02/1950	Grayburg-San Andres	Injector	TA
NORTH HOBBS /GRYBG-SAN ANDRES/ UT 141-32	3002507523	09/1930	Grayburg-San Andres	Injector	INACTIVE
NORTH HOBBS /GRYBG-SAN ANDRES/ UT 141-33	3002507543	09/1934	Grayburg-San Andres	Producer	ACTIVE
NORTH HOBBS /GRYBG-SAN ANDRES/ UT 142-19	3002527138	07/1981	Grayburg-San Andres	Injector	ACTIVE
NORTH HOBBS /GRYBG-SAN ANDRES/ UT 142-23	3002523246	10/1969	Grayburg-San Andres	Producer	ACTIVE
NORTH HOBBS /GRYBG-SAN ANDRES/ UT 142-32	3002528265	01/1984	Grayburg-San Andres	Injector	ACTIVE
NORTH HOBBS /GRYBG-SAN ANDRES/ UT 142-33	3002528411	03/1984	Grayburg-San Andres	Injector	ACTIVE
NORTH HOBBS /GRYBG-SAN ANDRES/ UT 143-32	3002528943	04/1985	Grayburg-San Andres	Producer	ACTIVE
NORTH HOBBS /GRYBG-SAN ANDRES/ UT 144-32	3002531662	02/1994	Grayburg-San Andres	Injector	ACTIVE
NORTH HOBBS /GRYBG-SAN ANDRES/ UT 211-13	3002505441	05/1957	Grayburg-San Andres	Producer	P & A
NORTH HOBBS /GRYBG-SAN ANDRES/ UT 211-19	3002507359	11/1930	Grayburg-San Andres	Producer	TA
NORTH HOBBS /GRYBG-SAN ANDRES/ UT 211-23	3002505469	02/1959	Grayburg-San Andres	Injector	ACTIVE
NORTH HOBBS /GRYBG-SAN ANDRES/ UT 211-24	3002507047	03/1935	Grayburg-San Andres	Producer	ACTIVE
NORTH HOBBS /GRYBG-SAN ANDRES/ UT 211-25	3002505489	03/1933	Grayburg-San Andres	Producer	P & A
NORTH HOBBS /GRYBG-SAN ANDRES/ UT 211-28	3002507425	09/1935	Grayburg-San Andres	Injector	INACTIVE
NORTH HOBBS /GRYBG-SAN ANDRES/ UT 211-29	3002507433	11/1930	Grayburg-San Andres	Producer	P & A
NORTH HOBBS /GRYBG-SAN ANDRES/ UT 211-30	3002507463	08/1930	Grayburg-San Andres	Producer	ACTIVE
NORTH HOBBS /GRYBG-SAN ANDRES/ UT 211-31	3002507503	09/1930	Grayburg-San Andres	Producer	TA
NORTH HOBBS /GRYBG-SAN ANDRES/ UT 211-32	3002507525	04/1931	Grayburg-San Andres	Producer	ACTIVE
NORTH HOBBS /GRYBG-SAN ANDRES/ UT 211-33	3002507564	06/1934	Grayburg-San Andres	Injector	ACTIVE
NORTH HOBBS /GRYBG-SAN ANDRES/ UT 211-34	3002507579	07/1934	Grayburg-San Andres	Producer	TA
NORTH HOBBS /GRYBG-SAN ANDRES/ UT 211-36	3002505542	08/1957	Grayburg-San Andres	Injector	ACTIVE
NORTH HOBBS /GRYBG-SAN ANDRES/ UT 212-19	3002528880	05/1985	Grayburg-San Andres	Producer	TA
NORTH HOBBS /GRYBG-SAN ANDRES/ UT 212-24	3002529129	04/1985	Grayburg-San Andres	Injector	ACTIVE
NORTH HOBBS /GRYBG-SAN ANDRES/ UT 212-32	3002530258	04/1988	Grayburg-San Andres	Producer	ACTIVE
NORTH HOBBS /GRYBG-SAN ANDRES/ UT 212-33	3002529026	01/1985	Grayburg-San Andres	Injector	ACTIVE
NORTH HOBBS /GRYBG-SAN ANDRES/ UT 213-33	3002529065	02/1985	Grayburg-San Andres	Producer	ACTIVE
NORTH HOBBS /GRYBG-SAN ANDRES/ UT 221-13	3002505439	04/1957	Grayburg-San Andres	Injector	TA
NORTH HOBBS /GRYBG-SAN ANDRES/ UT 221-19	3002507355	09/1930	Grayburg-San Andres	Producer	ACTIVE
NORTH HOBBS /GRYBG-SAN ANDRES/ UT 221-20	3002507377	10/1930	Grayburg-San Andres	Producer	TA
NORTH HOBBS /GRYBG-SAN ANDRES/ UT 221-23	3002505470	03/1959	Grayburg-San Andres	Producer	ACTIVE
NORTH HOBBS /GRYBG-SAN ANDRES/ UT 221-24	3002509876	10/1934	Grayburg-San Andres	Producer	TA
NORTH HOBBS /GRYBG-SAN ANDRES/ UT 221-25	3002505496	11/1937	Grayburg-San Andres	Producer	TA
NORTH HOBBS /GRYBG-SAN ANDRES/ UT 221-27	3002530910	04/1991	Grayburg-San Andres	Injector	P & A
NORTH HOBBS /GRYBG-SAN ANDRES/ UT 221-28	3002507429	02/1959	Grayburg-San Andres	Injector	ACTIVE
NORTH HOBBS /GRYBG-SAN ANDRES/ UT 221-29	3002507430	09/1930	Grayburg-San Andres	Producer	INACTIVE
NORTH HOBBS /GRYBG-SAN ANDRES/ UT 221-30	3002507462	04/1930	Grayburg-San Andres	Producer	ACTIVE
NORTH HOBBS /GRYBG-SAN ANDRES/ UT 221-31	3002507504	11/1930	Grayburg-San Andres	Producer	TA
NORTH HOBBS /GRYBG-SAN ANDRES/ UT 221-32	3002507520	08/1930	Grayburg-San Andres	Producer	TA
NORTH HOBBS /GRYBG-SAN ANDRES/ UT 221-33	3002507560	09/1930	Grayburg-San Andres	Injector	ACTIVE
NORTH HOBBS /GRYBG-SAN ANDRES/ UT 221-34	3002507578	09/1932	Grayburg-San Andres	Producer	TA
NORTH HOBBS /GRYBG-SAN ANDRES/ UT 222-29	3002526934	04/1981	Grayburg-San Andres	Injector	ACTIVE
NORTH HOBBS /GRYBG-SAN ANDRES/ UT 222-30	3002526833	07/1980	Grayburg-San Andres	Injector	ACTIVE

### North Hobbs Unit Current Well Listing and Status

NORTH HOBBS /GRYBG-SAN ANDRES/ UT 222-32	3002527140	06/1981	Grayburg-San Andres	Injector	ACTIVE
NORTH HOBBS /GRYBG-SAN ANDRES/ UT 222-33	3002526975	06/1981	Grayburg-San Andres	Injector	ACTIVE
NORTH HOBBS /GRYBG-SAN ANDRES/ UT 223-30	3002528555	03/1984	Grayburg-San Andres	Injector	ACTIVE
NORTH HOBBS /GRYBG-SAN ANDRES/ UT 223-32	3002528944	04/1985	Grayburg-San Andres	Injector	ACTIVE
NORTH HOBBS /GRYBG-SAN ANDRES/ UT 231-14	3002505451	08/1958	Grayburg-San Andres	Injector	TA
NORTH HOBBS /GRYBG-SAN ANDRES/ UT 231-18	3002507341	05/1959	Grayburg-San Andres	Producer	P & A
NORTH HOBBS /GRYBG-SAN ANDRES/ UT 231-19	3002507362	07/1930	Grayburg-San Andres	Injector	ACTIVE
NORTH HOBBS /GRYBG-SAN ANDRES/ UT 231-20	3002507382	10/1930	Grayburg-San Andres	Producer	ACTIVE
NORTH HOBBS /GRYBG-SAN ANDRES/ UT 231-23	3002505471	06/1959	Grayburg-San Andres	Injector	ACTIVE
NORTH HOBBS /GRYBG-SAN ANDRES/ UT 231-24	3002505483	06/1934	Grayburg-San Andres	Producer	ACTIVE
NORTH HOBBS /GRYBG-SAN ANDRES/ UT 231-25	3002505498	02/1955	Grayburg-San Andres	Injector	ACTIVE
NORTH HOBBS /GRYBG-SAN ANDRES/ UT 231-27	3002512495	07/1937	Grayburg-San Andres	Producer	TA
NORTH HOBBS /GRYBG-SAN ANDRES/ UT 231-28	3002507421	11/1933	Grayburg-San Andres	Injector	ACTIVE
NORTH HOBBS /GRYBG-SAN ANDRES/ UT 231-29	3002507438	10/1930	Grayburg-San Andres	Producer	ACTIVE
NORTH HOBBS /GRYBG-SAN ANDRES/ UT 231-30	3002507479	07/1930	Grayburg-San Andres	Producer	TA
NORTH HOBBS /GRYBG-SAN ANDRES/ UT 231-31	3002507507	11/1930	Grayburg-San Andres	Producer	ACTIVE
NORTH HOBBS /GRYBG-SAN ANDRES/ UT 231-32	3002507521	08/1930	Grayburg-San Andres	Producer	P & A
NORTH HOBBS /GRYBG-SAN ANDRES/ UT 231-33	3002507545	10/1930	Grayburg-San Andres	Injector	ACTIVE
NORTH HOBBS /GRYBG-SAN ANDRES/ UT 232-19	3002529172	08/1985	Grayburg-San Andres	Injector	ACTIVE
NORTH HOBBS /GRYBG-SAN ANDRES/ UT 232-20	3002507384	07/1933	Grayburg-San Andres	Producer	P & A
NORTH HOBBS /GRYBG-SAN ANDRES/ UT 232-28	3002528882	11/1984	Grayburg-San Andres	Injector	ACTIVE
NORTH HOBBS /GRYBG-SAN ANDRES/ UT 232-30	3002526935	10/1981	Grayburg-San Andres	Injector	ACTIVE
NORTH HOBBS /GRYBG-SAN ANDRES/ UT 232-32	3002523035	04/1969	Grayburg-San Andres	Producer	ACTIVE
NORTH HOBBS /GRYBG-SAN ANDRES/ UT 232-33	3002526834	06/1981	Grayburg-San Andres	Injector	ACTIVE
NORTH HOBBS /GRYBG-SAN ANDRES/ UT 233-20	3002527214	07/1981	Grayburg-San Andres	Injector	TA
NORTH HOBBS /GRYBG-SAN ANDRES/ UT 233-30	3002528942	02/1985	Grayburg-San Andres	Injector	ACTIVE
NORTH HOBBS /GRYBG-SAN ANDRES/ UT 233-33	3002528410	03/1984	Grayburg-San Andres	Producer	ACTIVE
NORTH HOBBS /GRYBG-SAN ANDRES/ UT 234-33	3002529275	07/1985	Grayburg-San Andres	Producer	ACTIVE
NORTH HOBBS /GRYBG-SAN ANDRES/ UT 241-13	3002505436	06/1935	Grayburg-San Andres	Injector	ACTIVE
NORTH HOBBS /GRYBG-SAN ANDRES/ UT 241-14	3002505453	04/1958	Grayburg-San Andres	Producer	P & A
NORTH HOBBS /GRYBG-SAN ANDRES/ UT 241-18	3002507338	11/1932	Grayburg-San Andres	Producer	TA
NORTH HOBBS /GRYBG-SAN ANDRES/ UT 241-19	3002507364	09/1930	Grayburg-San Andres	Injector	ACTIVE
NORTH HOBBS /GRYBG-SAN ANDRES/ UT 241-20	3002512493	10/1930	Grayburg-San Andres	Producer	ACTIVE
NORTH HOBBS /GRYBG-SAN ANDRES/ UT 241-21	3002507391	10/1935	Grayburg-San Andres	Producer	P & A
NORTH HOBBS /GRYBG-SAN ANDRES/ UT 241-23	3002505472	07/1959	Grayburg-San Andres	Producer	P & A
NORTH HOBBS /GRYBG-SAN ANDRES/ UT 241-24	3002505482	03/1934	Grayburg-San Andres	Producer	ACTIVE
NORTH HOBBS /GRYBG-SAN ANDRES/ UT 241-25	3002505501	07/1958	Grayburg-San Andres	Producer	ACTIVE
NORTH HOBBS /GRYBG-SAN ANDRES/ UT 241-27	3002507409	01/1935	Grayburg-San Andres	Injector	TA
NORTH HOBBS /GRYBG-SAN ANDRES/ UT 241-28	3002512498	09/1934	Grayburg-San Andres	Producer	ACTIVE
NORTH HOBBS /GRYBG-SAN ANDRES/ UT 241-29	3002507437	09/1930	Grayburg-San Andres	Injector	ACTIVE
NORTH HOBBS /GRYBG-SAN ANDRES/ UT 241-30	3002507480	09/1930	Grayburg-San Andres	Injector	TA
NORTH HOBBS /GRYBG-SAN ANDRES/ UT 241-31	3002507508	05/1948	Grayburg-San Andres	Producer	TA
NORTH HOBBS /GRYBG-SAN ANDRES/ UT 241-32	3002507533	01/1949	Grayburg-San Andres	Producer	ACTIVE
NORTH HOBBS /GRYBG-SAN ANDRES/ UT 241-33	3002507547	02/1932	Grayburg-San Andres	Producer	ACTIVE
NORTH HOBBS /GRYBG-SAN ANDRES/ UT 242-18	3002527198	07/1981	Grayburg-San Andres	Injector	P & A
NORTH HOBBS /GRYBG-SAN ANDRES/ UT 242-19	3002523481	05/1957	Grayburg-San Andres	Producer	ACTIVE
NORTH HOBBS /GRYBG-SAN ANDRES/ UT 242-24	3002526832	10/1980	Grayburg-San Andres	Injector	ACTIVE
NORTH HOBBS /GRYBG-SAN ANDRES/ UT 242-28	3002529276	08/1985	Grayburg-San Andres	Injector	ACTIVE
NORTH HOBBS /GRYBG-SAN ANDRES/ UT 242-29	3002528413	03/1984	Grayburg-San Andres	Injector	ACTIVE
NORTH HOBBS /GRYBG-SAN ANDRES/ UT 242-30	3002528886	03/1985	Grayburg-San Andres	Injector	ACTIVE
NORTH HOBBS /GRYBG-SAN ANDRES/ UT 243-28	3002523304	03/1994	Grayburg-San Andres	Producer	ACTIVE
NORTH HOBBS /GRYBG-SAN ANDRES/ UT 311-18	3002507348	09/1960	Grayburg-San Andres	Producer	P & A
NORTH HOBBS /GRYBG-SAN ANDRES/ UT 311-19	3002507369	11/1930	Grayburg-San Andres	Injector	ACTIVE

### North Hobbs Unit Current Well Listing and Status

NORTH HOBBS /GRYBG-SAN ANDRES/ UT 311-23	3002505464	08/1957	Grayburg-San Andres	Producer	ACTIVE
NORTH HOBBS /GRYBG-SAN ANDRES/ UT 311-24	3002505481	08/1935	Grayburg-San Andres	Producer	ACTIVE
NORTH HOBBS /GRYBG-SAN ANDRES/ UT 311-25	3002505506	03/1933	Grayburg-San Andres	Producer	P & A
NORTH HOBBS /GRYBG-SAN ANDRES/ UT 311-26	3002525116	10/1975	Grayburg-San Andres	Producer	P & A
NORTH HOBBS /GRYBG-SAN ANDRES/ UT 311-28	3002507417	07/1935	Grayburg-San Andres	Injector	TA
NORTH HOBBS /GRYBG-SAN ANDRES/ UT 311-29	3002507432	10/1930	Grayburg-San Andres	Producer	ACTIVE
NORTH HOBBS /GRYBG-SAN ANDRES/ UT 311-30	3002507469	08/1930	Grayburg-San Andres	Producer	TA
NORTH HOBBS /GRYBG-SAN ANDRES/ UT 311-31	3002507491	09/1930	Grayburg-San Andres	Producer	ACTIVE
NORTH HOBBS /GRYBG-SAN ANDRES/ UT 311-32	3002507515	08/1930	Grayburg-San Andres	Producer	P & A
NORTH HOBBS /GRYBG-SAN ANDRES/ UT 311-33	3002507555	08/1934	Grayburg-San Andres	Producer	ACTIVE
NORTH HOBBS /GRYBG-SAN ANDRES/ UT 311-34	3002512509	09/1935	Grayburg-San Andres	Producer	SHUT-IN
NORTH HOBBS /GRYBG-SAN ANDRES/ UT 311-36	3002505541	03/1953	Grayburg-San Andres	Producer	ACTIVE
NORTH HOBBS /GRYBG-SAN ANDRES/ UT 312-24	3002529130	05/1985	Grayburg-San Andres	Injector	SHUT-IN
NORTH HOBBS /GRYBG-SAN ANDRES/ UT 312-30	3002529197	06/1985	Grayburg-San Andres	Injector	ACTIVE
NORTH HOBBS /GRYBG-SAN ANDRES/ UT 312-31	3002527060	06/1981	Grayburg-San Andres	Injector	ACTIVE
NORTH HOBBS /GRYBG-SAN ANDRES/ UT 312-32	3002529017	12/1984	Grayburg-San Andres	Injector	ACTIVE
NORTH HOBBS /GRYBG-SAN ANDRES/ UT 312-33	3002529199	07/1985	Grayburg-San Andres	Producer	ACTIVE
NORTH HOBBS /GRYBG-SAN ANDRES/ UT 313-30	3002523270	02/1994	Grayburg-San Andres	Injector	ACTIVE
NORTH HOBBS /GRYBG-SAN ANDRES/ UT 313-32	3002530263	04/1988	Grayburg-San Andres	Producer	ACTIVE
NORTH HOBBS /GRYBG-SAN ANDRES/ UT 321-14	3002505457	11/1959	Grayburg-San Andres	Injector	P & A
NORTH HOBBS /GRYBG-SAN ANDRES/ UT 321-18	3002507345	03/1959	Grayburg-San Andres	Producer	P & A
NORTH HOBBS /GRYBG-SAN ANDRES/ UT 321-19	3002507360	09/1930	Grayburg-San Andres	Producer	ACTIVE
NORTH HOBBS /GRYBG-SAN ANDRES/ UT 321-23	3002505463	07/1957	Grayburg-San Andres	Injector	INACTIVE
NORTH HOBBS /GRYBG-SAN ANDRES/ UT 321-24	3002505480	08/1934	Grayburg-San Andres	Producer	ACTIVE
NORTH HOBBS /GRYBG-SAN ANDRES/ UT 321-25	3002505505	12/1930	Grayburg-San Andres	Producer	ACTIVE
NORTH HOBBS /GRYBG-SAN ANDRES/ UT 321-28	3002507416	02/1935	Grayburg-San Andres	Producer	ACTIVE
NORTH HOBBS /GRYBG-SAN ANDRES/ UT 321-29	3002507431	09/1930	Grayburg-San Andres	Injector	ACTIVE
NORTH HOBBS /GRYBG-SAN ANDRES/ UT 321-30	3002507467	07/1930	Grayburg-San Andres	Producer	ACTIVE
NORTH HOBBS /GRYBG-SAN ANDRES/ UT 321-31	3002507492	11/1930	Grayburg-San Andres	Producer	ACTIVE
NORTH HOBBS /GRYBG-SAN ANDRES/ UT 321-32	3002512506	08/1930	Grayburg-San Andres	Injector	ACTIVE
NORTH HOBBS /GRYBG-SAN ANDRES/ UT 321-33	3002507548	01/1933	Grayburg-San Andres	Producer	P & A
NORTH HOBBS /GRYBG-SAN ANDRES/ UT 321-34	3002512510	04/1935	Grayburg-San Andres	Producer	P & A
NORTH HOBBS /GRYBG-SAN ANDRES/ UT 321-36	3002505540	11/1956	Grayburg-San Andres	Injector	TA
NORTH HOBBS /GRYBG-SAN ANDRES/ UT 322-29	3002528883	12/1984	Grayburg-San Andres	Injector	ACTIVE
NORTH HOBBS /GRYBG-SAN ANDRES/ UT 322-31	3002530204	04/1988	Grayburg-San Andres	Injector	ACTIVE
NORTH HOBBS /GRYBG-SAN ANDRES/ UT 322-32	3002507518	09/1930	Grayburg-San Andres	Producer	ACTIVE
NORTH HOBBS /GRYBG-SAN ANDRES/ UT 322-33	3002527169	10/1981	Grayburg-San Andres	Injector	ACTIVE
NORTH HOBBS /GRYBG-SAN ANDRES/ UT 323-29	3002528941	02/1985	Grayburg-San Andres	Producer	ACTIVE
NORTH HOBBS /GRYBG-SAN ANDRES/ UT 323-32	3002526973	11/1980	Grayburg-San Andres	Injector	ACTIVE
NORTH HOBBS /GRYBG-SAN ANDRES/ UT 323-33	3002528951	07/1985	Grayburg-San Andres	Producer	P & A
NORTH HOBBS /GRYBG-SAN ANDRES/ UT 331-13	3002505447	07/1957	Grayburg-San Andres	Producer	ACTIVE
NORTH HOBBS /GRYBG-SAN ANDRES/ UT 331-14	3002505455	03/1958	Grayburg-San Andres	Producer	TA
NORTH HOBBS /GRYBG-SAN ANDRES/ UT 331-18	3002507346	05/1959	Grayburg-San Andres	Injector	P & A
NORTH HOBBS /GRYBG-SAN ANDRES/ UT 331-19	3002507363	09/1930	Grayburg-San Andres	Producer	P & A
NORTH HOBBS /GRYBG-SAN ANDRES/ UT 331-20	3002507381	03/1954	Grayburg-San Andres	Injector	P & A
NORTH HOBBS /GRYBG-SAN ANDRES/ UT 331-21	3002520696	10/1964	Grayburg-San Andres	Injector	P & A
NORTH HOBBS /GRYBG-SAN ANDRES/ UT 331-23	3002505474	04/1956	Grayburg-San Andres	Producer	ACTIVE
NORTH HOBBS /GRYBG-SAN ANDRES/ UT 331-24	3002505488	06/1932	Grayburg-San Andres	Injector	ACTIVE
NORTH HOBBS /GRYBG-SAN ANDRES/ UT 331-25	3002505500	02/1958	Grayburg-San Andres	Producer	ACTIVE
NORTH HOBBS /GRYBG-SAN ANDRES/ UT 331-28	3002507412	05/1935	Grayburg-San Andres	Producer	ACTIVE
NORTH HOBBS /GRYBG-SAN ANDRES/ UT 331-29	3002507436	09/1930	Grayburg-San Andres	Injector	P & A
NORTH HOBBS /GRYBG-SAN ANDRES/ UT 331-30	3002507472	09/1930	Grayburg-San Andres	Injector	ACTIVE
NORTH HOBBS /GRYBG-SAN ANDRES/ UT 331-31	3002507499	11/1930	Grayburg-San Andres	Producer	ACTIVE

## North Hobbs Unit Current Well Listing and Status

NORTH HOBBS /GRYBG-SAN ANDRES/ UT 331-32	3002507538	09/1930	Grayburg-San Andres	Injector	ACTIVE
NORTH HOBBS /GRYBG-SAN ANDRES/ UT 331-33	3002507546	11/1931	Grayburg-San Andres	Producer	TA
NORTH HOBBS /GRYBG-SAN ANDRES/ UT 331-34	3002507566	03/1935	Grayburg-San Andres	Producer	P & A
NORTH HOBBS /GRYBG-SAN ANDRES/ UT 332-19	3002529195	06/1985	Grayburg-San Andres	Injector	ACTIVE
NORTH HOBBS /GRYBG-SAN ANDRES/ UT 332-28	3002531655	01/1994	Grayburg-San Andres	Injector	ACTIVE
NORTH HOBBS /GRYBG-SAN ANDRES/ UT 332-30	3002528954	05/1985	Grayburg-San Andres	Injector	ACTIVE
NORTH HOBBS /GRYBG-SAN ANDRES/ UT 332-32	3002529173	05/1985	Grayburg-San Andres	Producer	ACTIVE
NORTH HOBBS /GRYBG-SAN ANDRES/ UT 333-30	3002528955	02/1985	Grayburg-San Andres	Injector	ACTIVE
NORTH HOBBS /GRYBG-SAN ANDRES/ UT 341-13	3002505446	09/1935	Grayburg-San Andres	Producer	ACTIVE
NORTH HOBBS /GRYBG-SAN ANDRES/ UT 341-14	3002505450	10/1957	Grayburg-San Andres	Producer	TA
NORTH HOBBS /GRYBG-SAN ANDRES/ UT 341-18	3002523765	05/1971	Grayburg-San Andres	Injector	P & A
NORTH HOBBS /GRYBG-SAN ANDRES/ UT 341-19	3002512491	09/1930	Grayburg-San Andres	Producer	ACTIVE
NORTH HOBBS /GRYBG-SAN ANDRES/ UT 341-20	3002507371	10/1930	Grayburg-San Andres	Producer	ACTIVE
NORTH HOBBS /GRYBG-SAN ANDRES/ UT 341-21	3002507396	03/1936	Grayburg-San Andres	Producer	P & A
NORTH HOBBS /GRYBG-SAN ANDRES/ UT 341-23	3002505475	05/1956	Grayburg-San Andres	Injector	ACTIVE
NORTH HOBBS /GRYBG-SAN ANDRES/ UT 341-24	3002505490	05/1933	Grayburg-San Andres	Producer	ACTIVE
NORTH HOBBS /GRYBG-SAN ANDRES/ UT 341-25	3002505497	11/1953	Grayburg-San Andres	Injector	ACTIVE
NORTH HOBBS /GRYBG-SAN ANDRES/ UT 341-28	3002512489	07/1934	Grayburg-San Andres	Producer	ACTIVE
NORTH HOBBS /GRYBG-SAN ANDRES/ UT 341-29	3002507445	10/1930	Grayburg-San Andres	Producer	ACTIVE
NORTH HOBBS /GRYBG-SAN ANDRES/ UT 341-30	3002524665	03/1974	Grayburg-San Andres	Producer	ACTIVE
NORTH HOBBS /GRYBG-SAN ANDRES/ UT 341-31	3002507500	09/1946	Grayburg-San Andres	Injector	ACTIVE
NORTH HOBBS /GRYBG-SAN ANDRES/ UT 341-32	3002507539	10/1930	Grayburg-San Andres	Injector	ACTIVE
NORTH HOBBS /GRYBG-SAN ANDRES/ UT 341-33	3002512757	12/1931	Grayburg-San Andres	Producer	TA
NORTH HOBBS /GRYBG-SAN ANDRES/ UT 341-34	3002507567	05/1935	Grayburg-San Andres	Producer	TA
NORTH HOBBS /GRYBG-SAN ANDRES/ UT 342-18	3002507342	11/1932	Grayburg-San Andres	Injector	ACTIVE
NORTH HOBBS /GRYBG-SAN ANDRES/ UT 342-24	3002529062	03/1985	Grayburg-San Andres	Injector	ACTIVE
NORTH HOBBS /GRYBG-SAN ANDRES/ UT 342-28	3002529931	07/1987	Grayburg-San Andres	Producer	ACTIVE
NORTH HOBBS /GRYBG-SAN ANDRES/ UT 342-29	3002528884	12/1984	Grayburg-San Andres	Injector	ACTIVE
NORTH HOBBS /GRYBG-SAN ANDRES/ UT 342-30	3002512501	10/1930	Grayburg-San Andres	Producer	P & A
NORTH HOBBS /GRYBG-SAN ANDRES/ UT 342-32	3002528266	01/1984	Grayburg-San Andres	Injector	ACTIVE
NORTH HOBBS /GRYBG-SAN ANDRES/ UT 342-33	3002528267	01/1984	Grayburg-San Andres	Injector	TA
NORTH HOBBS /GRYBG-SAN ANDRES/ UT 342-34	3002528199	03/1984	Grayburg-San Andres	Producer	P & A
NORTH HOBBS /GRYBG-SAN ANDRES/ UT 343-32	3002529906	06/1987	Grayburg-San Andres	Producer	ACTIVE
NORTH HOBBS /GRYBG-SAN ANDRES/ UT 411-18	3002507349	04/1962	Grayburg-San Andres	Producer	P & A
NORTH HOBBS /GRYBG-SAN ANDRES/ UT 411-19	3002507370	02/1933	Grayburg-San Andres	Injector	INACTIVE
NORTH HOBBS /GRYBG-SAN ANDRES/ UT 411-23	3002512783	06/1951	Grayburg-San Andres	Injector	ACTIVE
NORTH HOBBS /GRYBG-SAN ANDRES/ UT 411-24	3002523522	06/1970	Grayburg-San Andres	Producer	ACTIVE
NORTH HOBBS /GRYBG-SAN ANDRES/ UT 411-25	3002505503	08/1930	Grayburg-San Andres	Producer	P & A
NORTH HOBBS /GRYBG-SAN ANDRES/ UT 411-26	3002505509	10/1956	Grayburg-San Andres	Injector	P & A
NORTH HOBBS /GRYBG-SAN ANDRES/ UT 411-28	3002507419	04/1936	Grayburg-San Andres	Producer	P & A
NORTH HOBBS /GRYBG-SAN ANDRES/ UT 411-29	3002507454	10/1930	Grayburg-San Andres	Injector	TA
NORTH HOBBS /GRYBG-SAN ANDRES/ UT 411-30	3002507470	12/1932	Grayburg-San Andres	Injector	ACTIVE
NORTH HOBBS /GRYBG-SAN ANDRES/ UT 411-31	3002507490	07/1930	Grayburg-San Andres	Producer	ACTIVE
NORTH HOBBS /GRYBG-SAN ANDRES/ UT 411-32	3002507516	09/1930	Grayburg-San Andres	Producer	ACTIVE
NORTH HOBBS /GRYBG-SAN ANDRES/ UT 411-33	3002507556	11/1934	Grayburg-San Andres	Producer	TA
NORTH HOBBS /GRYBG-SAN ANDRES/ UT 411-36	3002505539	01/1931	Grayburg-San Andres	Injector	ACTIVE
NORTH HOBBS /GRYBG-SAN ANDRES/ UT 412-23	3002505468	08/1955	Grayburg-San Andres	Producer	TA
NORTH HOBBS /GRYBG-SAN ANDRES/ UT 412-24	3002505479	08/1932	Grayburg-San Andres	Producer	ACTIVE
NORTH HOBBS /GRYBG-SAN ANDRES/ UT 412-30	3002523384	01/1970	Grayburg-San Andres	Producer	ACTIVE
NORTH HOBBS /GRYBG-SAN ANDRES/ UT 412-31	3002523204	07/1969	Grayburg-San Andres	Producer	P & A
NORTH HOBBS /GRYBG-SAN ANDRES/ UT 412-33	3002529932	07/1987	Grayburg-San Andres	Producer	ACTIVE
NORTH HOBBS /GRYBG-SAN ANDRES/ UT 413-24	3002528414	03/1984	Grayburg-San Andres	Injector	ACTIVE
NORTH HOBBS /GRYBG-SAN ANDRES/ UT 414-24	3002528879	10/1984	Grayburg-San Andres	Injector	ACTIVE



## North Hobbs Unit Current Well Listing and Status

NORTH HOBBS /GRYBG-SAN ANDRES/ UT 421-14	3002505456	10/1935	Grayburg-San Andres	Producer	ACTIVE
NORTH HOBBS /GRYBG-SAN ANDRES/ UT 421-18	3002507347	09/1959	Grayburg-San Andres	Producer	P & A
NORTH HOBBS /GRYBG-SAN ANDRES/ UT 421-19	3002507368	11/1930	Grayburg-San Andres	Producer	SHUT-IN
NORTH HOBBS /GRYBG-SAN ANDRES/ UT 421-20	3002507388	05/1952	Grayburg-San Andres	Producer	P & A
NORTH HOBBS /GRYBG-SAN ANDRES/ UT 421-23	3002505466	07/1951	Grayburg-San Andres	Producer	ACTIVE
NORTH HOBBS /GRYBG-SAN ANDRES/ UT 421-24	3002523081	04/1969	Grayburg-San Andres	Producer	ACTIVE
NORTH HOBBS /GRYBG-SAN ANDRES/ UT 421-25	3002505504	09/1930	Grayburg-San Andres	Producer	ACTIVE
NORTH HOBBS /GRYBG-SAN ANDRES/ UT 421-28	3002507418	05/1935	Grayburg-San Andres	Producer	TA
NORTH HOBBS /GRYBG-SAN ANDRES/ UT 421-29	3002507459	12/1930	Grayburg-San Andres	Producer	P & A
NORTH HOBBS /GRYBG-SAN ANDRES/ UT 421-30	3002507468	07/1930	Grayburg-San Andres	Producer	ACTIVE
NORTH HOBBS /GRYBG-SAN ANDRES/ UT 421-31	3002507493	04/1934	Grayburg-San Andres	Producer	ACTIVE
NORTH HOBBS /GRYBG-SAN ANDRES/ UT 421-32	3002512507	08/1930	Grayburg-San Andres	Producer	ACTIVE
NORTH HOBBS /GRYBG-SAN ANDRES/ UT 421-33	3002507554	10/1932	Grayburg-San Andres	Producer	ACTIVE
NORTH HOBBS /GRYBG-SAN ANDRES/ UT 421-34	3002507573	01/1962	Grayburg-San Andres	Producer	P & A
NORTH HOBBS /GRYBG-SAN ANDRES/ UT 421-36	3002509926	09/1956	Grayburg-San Andres	Producer	P & A
NORTH HOBBS /GRYBG-SAN ANDRES/ UT 422-19	3002529196	07/1985	Grayburg-San Andres	Producer	TA
NORTH HOBBS /GRYBG-SAN ANDRES/ UT 422-24	3002505478	09/1930	Grayburg-San Andres	Injector	ACTIVE
NORTH HOBBS /GRYBG-SAN ANDRES/ UT 422-25	3002526933	12/1981	Grayburg-San Andres	Injector	ACTIVE
NORTH HOBBS /GRYBG-SAN ANDRES/ UT 422-28	3002527243	06/1981	Grayburg-San Andres	Injector	ACTIVE
NORTH HOBBS /GRYBG-SAN ANDRES/ UT 422-30	3002527059	05/1981	Grayburg-San Andres	Injector	ACTIVE
NORTH HOBBS /GRYBG-SAN ANDRES/ UT 422-31	3002528887	05/1985	Grayburg-San Andres	Producer	ACTIVE
NORTH HOBBS /GRYBG-SAN ANDRES/ UT 422-32	3002529074	03/1985	Grayburg-San Andres	Injector	ACTIVE
NORTH HOBBS /GRYBG-SAN ANDRES/ UT 422-33	3002528268	01/1984	Grayburg-San Andres	Injector	ACTIVE
NORTH HOBBS /GRYBG-SAN ANDRES/ UT 423-32	3002529198	05/1985	Grayburg-San Andres	Injector	ACTIVE
NORTH HOBBS /GRYBG-SAN ANDRES/ UT 424-32	3002523130	12/1997	Grayburg-San Andres	Producer	ACTIVE
NORTH HOBBS /GRYBG-SAN ANDRES/ UT 431-13	3002505445	12/1935	Grayburg-San Andres	Injector	ACTIVE
NORTH HOBBS /GRYBG-SAN ANDRES/ UT 431-14	3002505454	01/1958	Grayburg-San Andres	Producer	ACTIVE
NORTH HOBBS /GRYBG-SAN ANDRES/ UT 431-18	3002507344	09/1957	Grayburg-San Andres	Producer	P & A
NORTH HOBBS /GRYBG-SAN ANDRES/ UT 431-19	3002522601	07/1968	Grayburg-San Andres	Injector	P & A
NORTH HOBBS /GRYBG-SAN ANDRES/ UT 431-20	3002507386	06/1952	Grayburg-San Andres	Producer	P & A
NORTH HOBBS /GRYBG-SAN ANDRES/ UT 431-23	3002505467	01/1953	Grayburg-San Andres	Injector	INACTIVE
NORTH HOBBS /GRYBG-SAN ANDRES/ UT 431-24	3002505487	11/1930	Grayburg-San Andres	Producer	P & A
NORTH HOBBS /GRYBG-SAN ANDRES/ UT 431-25	3002505492	10/1930	Grayburg-San Andres	Injector	ACTIVE
NORTH HOBBS /GRYBG-SAN ANDRES/ UT 431-28	3002507413	09/1935	Grayburg-San Andres	Producer	ACTIVE
NORTH HOBBS /GRYBG-SAN ANDRES/ UT 431-29	3002507458	10/1930	Grayburg-San Andres	Producer	ACTIVE
NORTH HOBBS /GRYBG-SAN ANDRES/ UT 431-30	3002507474	09/1930	Grayburg-San Andres	Producer	ACTIVE
NORTH HOBBS /GRYBG-SAN ANDRES/ UT 431-31	3002512758	07/1931	Grayburg-San Andres	Producer	ACTIVE
NORTH HOBBS /GRYBG-SAN ANDRES/ UT 431-32	3002507537	08/1930	Grayburg-San Andres	Injector	ACTIVE
NORTH HOBBS /GRYBG-SAN ANDRES/ UT 431-33	3002507553	11/1931	Grayburg-San Andres	Producer	ACTIVE
NORTH HOBBS /GRYBG-SAN ANDRES/ UT 431-34	3002507568	03/1938	Grayburg-San Andres	Producer	P & A
NORTH HOBBS /GRYBG-SAN ANDRES/ UT 432-20	3002507387	12/1953	Grayburg-San Andres	Producer	P & A
NORTH HOBBS /GRYBG-SAN ANDRES/ UT 432-24	3002529073	04/1985	Grayburg-San Andres	Injector	ACTIVE
NORTH HOBBS /GRYBG-SAN ANDRES/ UT 432-30	3002528957	01/1985	Grayburg-San Andres	Injector	ACTIVE
NORTH HOBBS /GRYBG-SAN ANDRES/ UT 432-32	3002526974	06/1981	Grayburg-San Andres	Injector	ACTIVE
NORTH HOBBS /GRYBG-SAN ANDRES/ UT 432-33	3002528269	01/1984	Grayburg-San Andres	Injector	ACTIVE
NORTH HOBBS /GRYBG-SAN ANDRES/ UT 433-33	3002530308	05/1988	Grayburg-San Andres	Producer	ACTIVE
NORTH HOBBS /GRYBG-SAN ANDRES/ UT 441-13	3002512732	09/1932	Grayburg-San Andres	Injector	ACTIVE
NORTH HOBBS /GRYBG-SAN ANDRES/ UT 441-14	3002525020	06/1975	Grayburg-San Andres	Producer	TA
NORTH HOBBS /GRYBG-SAN ANDRES/ UT 441-18	3002507343	02/1933	Grayburg-San Andres	Producer	P & A
NORTH HOBBS /GRYBG-SAN ANDRES/ UT 441-19	3002507366	12/1932	Grayburg-San Andres	Producer	ACTIVE
NORTH HOBBS /GRYBG-SAN ANDRES/ UT 441-21	3002507397	11/1937	Grayburg-San Andres	Producer	P & A
NORTH HOBBS /GRYBG-SAN ANDRES/ UT 441-23	3002505473	01/1956	Grayburg-San Andres	Producer	INACTIVE
NORTH HOBBS /GRYBG-SAN ANDRES/ UT 441-24	3002505486	07/1930	Grayburg-San Andres	Producer	ACTIVE

### North Hobbs Unit Current Well Listing and Status

NORTH HOBBS /GRYBG-SAN ANDRES/ UT 441-25	3002505499	04/1955	Grayburg-San Andres	Injector	ACTIVE
NORTH HOBBS /GRYBG-SAN ANDRES/ UT 441-28	3002507411	01/1935	Grayburg-San Andres	Injector	ACTIVE
NORTH HOBBS /GRYBG-SAN ANDRES/ UT 441-29	3002507444	10/1930	Grayburg-San Andres	Producer	ACTIVE
NORTH HOBBS /GRYBG-SAN ANDRES/ UT 441-30	3002507473	08/1930	Grayburg-San Andres	Producer	ACTIVE
NORTH HOBBS /GRYBG-SAN ANDRES/ UT 441-31	3002507498	08/1946	Grayburg-San Andres	Producer	TA
NORTH HOBBS /GRYBG-SAN ANDRES/ UT 441-32	3002507536	06/1930	Grayburg-San Andres	Producer	ACTIVE
NORTH HOBBS /GRYBG-SAN ANDRES/ UT 441-34	3002507580	06/1944	Grayburg-San Andres	Producer	P & A
NORTH HOBBS /GRYBG-SAN ANDRES/ UT 442-13	3002528878	10/1984	Grayburg-San Andres	Injector	ACTIVE
NORTH HOBBS /GRYBG-SAN ANDRES/ UT 442-19	3002528881	11/1984	Grayburg-San Andres	Injector	ACTIVE
NORTH HOBBS /GRYBG-SAN ANDRES/ UT 442-24	3002529098	03/1985	Grayburg-San Andres	Injector	ACTIVE
NORTH HOBBS /GRYBG-SAN ANDRES/ UT 442-29	3002528885	12/1985	Grayburg-San Andres	Injector	ACTIVE
NORTH HOBBS /GRYBG-SAN ANDRES/ UT 442-30	3002527001	05/1981	Grayburg-San Andres	Injector	ACTIVE
NORTH HOBBS /GRYBG-SAN ANDRES/ UT 443-30	3002528958	01/1985	Grayburg-San Andres	Producer	P & A
NORTH HOBBS /GRYBG-SAN ANDRES/ UT 444-30	3002528959	03/1985	Grayburg-San Andres	Injector	ACTIVE
NORTH HOBBS /GRYBG-SAN ANDRES/ UT 511-33	3002534906	05/2000	Grayburg-San Andres	Producer	ACTIVE
NORTH HOBBS /GRYBG-SAN ANDRES/ UT 512-32	3002534907	05/2000	Grayburg-San Andres	Producer	ACTIVE
NORTH HOBBS /GRYBG-SAN ANDRES/ UT 513-33	3002534980	05/2000	Grayburg-San Andres	Producer	ACTIVE
NORTH HOBBS /GRYBG-SAN ANDRES/ UT 514-32	3002536245	05/2003	Grayburg-San Andres	Producer	ACTIVE
NORTH HOBBS /GRYBG-SAN ANDRES/ UT 516-13	3002538023	02/2007	Grayburg-San Andres	Producer	ACTIVE
NORTH HOBBS /GRYBG-SAN ANDRES/ UT 517-18	3002538087	12/2006	Grayburg-San Andres	Producer	ACTIVE
NORTH HOBBS /GRYBG-SAN ANDRES/ UT 518-18	3002538114	02/2007	Grayburg-San Andres	Injector	ACTIVE
NORTH HOBBS /GRYBG-SAN ANDRES/ UT 521-33	3002534643	09/1999	Grayburg-San Andres	Producer	ACTIVE
NORTH HOBBS /GRYBG-SAN ANDRES/ UT 523-33	3002534372	07/1998	Grayburg-San Andres	Producer	ACTIVE
NORTH HOBBS /GRYBG-SAN ANDRES/ UT 524-33	3002534993	05/2000	Grayburg-San Andres	Producer	ACTIVE
NORTH HOBBS /GRYBG-SAN ANDRES/ UT 525-30	3002536216	05/2003	Grayburg-San Andres	Producer	ACTIVE
NORTH HOBBS /GRYBG-SAN ANDRES/ UT 526-33	3002523334	08/2003	Grayburg-San Andres	Producer	ACTIVE
NORTH HOBBS /GRYBG-SAN ANDRES/ UT 527-30	3002536247	06/2003	Grayburg-San Andres	Producer	INACTIVE
NORTH HOBBS /GRYBG-SAN ANDRES/ UT 529-18	3002538110	01/2007	Grayburg-San Andres	Producer	ACTIVE
NORTH HOBBS /GRYBG-SAN ANDRES/ UT 531-32	3002534374	06/1998	Grayburg-San Andres	Producer	ACTIVE
NORTH HOBBS /GRYBG-SAN ANDRES/ UT 532-32	3002512504	06/1930	Grayburg-San Andres	Producer	TA
NORTH HOBBS /GRYBG-SAN ANDRES/ UT 533-29	3002535541	06/2001	Grayburg-San Andres	Producer	ACTIVE
NORTH HOBBS /GRYBG-SAN ANDRES/ UT 534-33	3002534373	07/1998	Grayburg-San Andres	Injector	ACTIVE
NORTH HOBBS /GRYBG-SAN ANDRES/ UT 535-33	3002535758	02/2002	Grayburg-San Andres	Producer	ACTIVE
NORTH HOBBS /GRYBG-SAN ANDRES/ UT 536-30	3002536286	07/2003	Grayburg-San Andres	Injector	ACTIVE
NORTH HOBBS /GRYBG-SAN ANDRES/ UT 537-32	3002536149	04/2003	Grayburg-San Andres	Producer	ACTIVE
NORTH HOBBS /GRYBG-SAN ANDRES/ UT 538-30	3002536281	07/2003	Grayburg-San Andres	Producer	ACTIVE
NORTH HOBBS /GRYBG-SAN ANDRES/ UT 539-24	3002536213	04/2003	Grayburg-San Andres	Producer	ACTIVE
NORTH HOBBS /GRYBG-SAN ANDRES/ UT 541-32	3002534964	05/2000	Grayburg-San Andres	Producer	ACTIVE
NORTH HOBBS /GRYBG-SAN ANDRES/ UT 542-32	3002534375	07/1998	Grayburg-San Andres	Producer	ACTIVE
NORTH HOBBS /GRYBG-SAN ANDRES/ UT 543-33	3002534997	08/2000	Grayburg-San Andres	Injector	ACTIVE
NORTH HOBBS /GRYBG-SAN ANDRES/ UT 544-29	3002534644	08/1999	Grayburg-San Andres	Producer	ACTIVE
NORTH HOBBS /GRYBG-SAN ANDRES/ UT 545-33	3002534416	07/1998	Grayburg-San Andres	Producer	ACTIVE
NORTH HOBBS /GRYBG-SAN ANDRES/ UT 546-30	3002536280	06/2003	Grayburg-San Andres	Producer	ACTIVE
NORTH HOBBS /GRYBG-SAN ANDRES/ UT 547-30	3002536242	05/2003	Grayburg-San Andres	Producer	ACTIVE
NORTH HOBBS /GRYBG-SAN ANDRES/ UT 548-32	3002536150	04/2003	Grayburg-San Andres	Producer	ACTIVE
NORTH HOBBS /GRYBG-SAN ANDRES/ UT 549-24	3002536193	04/2003	Grayburg-San Andres	Producer	ACTIVE
NORTH HOBBS /GRYBG-SAN ANDRES/ UT 611-24	3002535467	05/2001	Grayburg-San Andres	Producer	ACTIVE
NORTH HOBBS /GRYBG-SAN ANDRES/ UT 612-24	3002535450	12/2001	Grayburg-San Andres	Producer	ACTIVE
NORTH HOBBS /GRYBG-SAN ANDRES/ UT 613-24	3002535370	03/2001	Grayburg-San Andres	Producer	ACTIVE
NORTH HOBBS /GRYBG-SAN ANDRES/ UT 614-24	3002535555	06/2001	Grayburg-San Andres	Producer	ACTIVE
NORTH HOBBS /GRYBG-SAN ANDRES/ UT 615-19	3002537127	04/2005	Grayburg-San Andres	Producer	ACTIVE
NORTH HOBBS /GRYBG-SAN ANDRES/ UT 616-19	3002537154	02/2006	Grayburg-San Andres	Producer	ACTIVE
NORTH HOBBS /GRYBG-SAN ANDRES/ UT 617-30	3002537102	06/2005	Grayburg-San Andres	Producer	ACTIVE

## North Hobbs Unit Current Well Listing and Status

NORTH HOBBS /GRYBG-SAN ANDRES/ UT 618-30	3002537120	09/2005	Grayburg-San Andres	Producer	ACTIVE
NORTH HOBBS /GRYBG-SAN ANDRES/ UT 621-30	3002535332	03/2001	Grayburg-San Andres	Producer	ACTIVE
NORTH HOBBS /GRYBG-SAN ANDRES/ UT 622-24	3002537152	08/2005	Grayburg-San Andres	Injector	ACTIVE
NORTH HOBBS /GRYBG-SAN ANDRES/ UT 623-29	3002534869	05/2000	Grayburg-San Andres	Producer	ACTIVE
NORTH HOBBS /GRYBG-SAN ANDRES/ UT 624-29	3002534870	04/2000	Grayburg-San Andres	Producer	ACTIVE
NORTH HOBBS /GRYBG-SAN ANDRES/ UT 625-29	3002537213	08/2005	Grayburg-San Andres	Producer	ACTIVE
NORTH HOBBS /GRYBG-SAN ANDRES/ UT 626-29	3002537250	11/2005	Grayburg-San Andres	Injector	ACTIVE
NORTH HOBBS /GRYBG-SAN ANDRES/ UT 627-19	3002537235	07/2005	Grayburg-San Andres	Producer	ACTIVE
NORTH HOBBS /GRYBG-SAN ANDRES/ UT 628-19	3002538524	01/2007	Grayburg-San Andres	Producer	ACTIVE
NORTH HOBBS /GRYBG-SAN ANDRES/ UT 631-33	3002534994	08/2000	Grayburg-San Andres	Injector	ACTIVE
NORTH HOBBS /GRYBG-SAN ANDRES/ UT 632-31	3002537214	07/2005	Grayburg-San Andres	Injector	ACTIVE
NORTH HOBBS /GRYBG-SAN ANDRES/ UT 633-19	3002537446	01/2006	Grayburg-San Andres	Injector	ACTIVE
NORTH HOBBS /GRYBG-SAN ANDRES/ UT 634-29	3002535384	04/2001	Grayburg-San Andres	Producer	ACTIVE
NORTH HOBBS /GRYBG-SAN ANDRES/ UT 635-29	3002537409	01/2006	Grayburg-San Andres	Injector	ACTIVE
NORTH HOBBS /GRYBG-SAN ANDRES/ UT 636-29	3002537128	09/2005	Grayburg-San Andres	Producer	ACTIVE
NORTH HOBBS /GRYBG-SAN ANDRES/ UT 637-24	3002537101	07/2005	Grayburg-San Andres	Injector	ACTIVE
NORTH HOBBS /GRYBG-SAN ANDRES/ UT 638-19	3002538125	02/2007	Grayburg-San Andres	Producer	ACTIVE
NORTH HOBBS /GRYBG-SAN ANDRES/ UT 641-25	3002537118	09/2005	Grayburg-San Andres	Producer	ACTIVE
NORTH HOBBS /GRYBG-SAN ANDRES/ UT 642-25	3002537105	05/2005	Grayburg-San Andres	Producer	ACTIVE
NORTH HOBBS /GRYBG-SAN ANDRES/ UT 643-29	3002535376	04/2001	Grayburg-San Andres	Producer	ACTIVE
NORTH HOBBS /GRYBG-SAN ANDRES/ UT 644-28	3002535349	03/2001	Grayburg-San Andres	Producer	TA
NORTH HOBBS /GRYBG-SAN ANDRES/ UT 645-13	3002538518	12/2006	Grayburg-San Andres	Producer	ACTIVE
NORTH HOBBS /GRYBG-SAN ANDRES/ UT 646-13	3002538071	12/2006	Grayburg-San Andres	Producer	ACTIVE
NORTH HOBBS /GRYBG-SAN ANDRES/ UT 653-13	3002543846	12/2017	Grayburg-San Andres	Producer	ACTIVE
NORTH HOBBS /GRYBG-SAN ANDRES/ UT 657-24	3002543841	1/2018	Grayburg-San Andres	Injector	ACTIVE
NORTH HOBBS /GRYBG-SAN ANDRES/ UT 658-24	3002543842	1/2018	Grayburg-San Andres	Injector	ACTIVE
NORTH HOBBS /GRYBG-SAN ANDRES/ UT 659-24	3002543078	4/2016	Grayburg-San Andres	Injector	ACTIVE
NORTH HOBBS /GRYBG-SAN ANDRES/ UT 662-24	3002543604	5/2017	Grayburg-San Andres	Producer	ACTIVE
NORTH HOBBS /GRYBG-SAN ANDRES/ UT 663-24	3002543026	8/2016	Grayburg-San Andres	Producer	INACTIVE
NORTH HOBBS /GRYBG-SAN ANDRES/ UT 666-24	3002543605	6/2017	Grayburg-San Andres	Injector	ACTIVE
NORTH HOBBS /GRYBG-SAN ANDRES/ UT 667-24	3002543606	8/2017	Grayburg-San Andres	Injector	ACTIVE
NORTH HOBBS /GRYBG-SAN ANDRES/ UT 668-24	3002543074	4/2016	Grayburg-San Andres	Injector	ACTIVE
NORTH HOBBS /GRYBG-SAN ANDRES/ UT 669-24	3002543039	4/2016	Grayburg-San Andres	Injector	ACTIVE
NORTH HOBBS /GRYBG-SAN ANDRES/ UT 673-19	3002543058	8/2016	Grayburg-San Andres	Producer	ACTIVE
NORTH HOBBS /GRYBG-SAN ANDRES/ UT 678-24	3002543579	12/2017	Grayburg-San Andres	Injector	ACTIVE
NORTH HOBBS /GRYBG-SAN ANDRES/ UT 679-24	3002543040	4/2016	Grayburg-San Andres	Injector	ACTIVE
NORTH HOBBS /GRYBG-SAN ANDRES/ UT 680-24	3002543073	4/2016	Grayburg-San Andres	Injector	ACTIVE
NORTH HOBBS /GRYBG-SAN ANDRES/ UT 685-24	3002543847	1/2018	Grayburg-San Andres	Producer	ACTIVE
NORTH HOBBS /GRYBG-SAN ANDRES/ UT 686-24	3002543580	12/2017	Grayburg-San Andres	Injector	ACTIVE
NORTH HOBBS /GRYBG-SAN ANDRES/ UT 687-24	3002543038	4/2016	Grayburg-San Andres	Injector	ACTIVE
NORTH HOBBS /GRYBG-SAN ANDRES/ UT 693-33	3002543282	8/2016	Grayburg-San Andres	Injector	ACTIVE
NORTH HOBBS /GRYBG-SAN ANDRES/ UT 711-29	3002537451	02/2006	Grayburg-San Andres	Injector	ACTIVE
NORTH HOBBS /GRYBG-SAN ANDRES/ UT 712-29	3002537558	02/2006	Grayburg-San Andres	Injector	ACTIVE
NORTH HOBBS /GRYBG-SAN ANDRES/ UT 713-30	3002534983	06/2000	Grayburg-San Andres	Producer	INACTIVE
NORTH HOBBS /GRYBG-SAN ANDRES/ UT 721-29	3002537474	02/2006	Grayburg-San Andres	Producer	ACTIVE
NORTH HOBBS /GRYBG-SAN ANDRES/ UT 722-31	3002537428	10/2005	Grayburg-San Andres	Producer	ACTIVE
NORTH HOBBS /GRYBG-SAN ANDRES/ UT 731-25	3002537481	02/2006	Grayburg-San Andres	Producer	ACTIVE
NORTH HOBBS /GRYBG-SAN ANDRES/ UT 733-19	3002537445	01/2006	Grayburg-San Andres	Producer	ACTIVE
NORTH HOBBS /GRYBG-SAN ANDRES/ UT 734-33	3002535011	06/2000	Grayburg-San Andres	Producer	TA
NORTH HOBBS /GRYBG-SAN ANDRES/ UT 741-25	3002537480	03/2006	Grayburg-San Andres	Injector	ACTIVE
NORTH HOBBS /GRYBG-SAN ANDRES/ UT 742-29	3002537475	01/2006	Grayburg-San Andres	Producer	ACTIVE
NORTH HOBBS /GRYBG-SAN ANDRES/ UT 743-31	3002535451	05/2001	Grayburg-San Andres	Producer	ACTIVE
NORTH HOBBS /GRYBG-SAN ANDRES/ UT 744-25	3002505493	11/1930	Grayburg-San Andres	Producer	ACTIVE

### North Hobbs Unit Current Well Listing and Status

NORTH HOBBS /GRYBG-SAN ANDRES/ UT 813-29	3002534871	06/2000	Grayburg-San Andres	Injector	ACTIVE
NORTH HOBBS /GRYBG-SAN ANDRES/ UT 814-29	3002535527	04/2003	Grayburg-San Andres	Producer	ACTIVE
NORTH HOBBS /GRYBG-SAN ANDRES/ UT 831-13	3002540816	12/2012	Grayburg-San Andres	Producer	INACTIVE
NORTH HOBBS /GRYBG-SAN ANDRES/ UT 832-13	3002540822	12/2012	Grayburg-San Andres	Producer	ACTIVE
NORTH HOBBS /GRYBG-SAN ANDRES/ UT 833-18	3002540834	01/2013	Grayburg-San Andres	Producer	ACTIVE
NORTH HOBBS /GRYBG-SAN ANDRES/ UT 834-32	3002535452	05/2001	Grayburg-San Andres	Producer	ACTIVE
NORTH HOBBS /GRYBG-SAN ANDRES/ UT 843-33	3002535743	01/2002	Grayburg-San Andres	Producer	TA
NORTH HOBBS /GRYBG-SAN ANDRES/ UT 844-32	3002535534	05/2001	Grayburg-San Andres	Producer	ACTIVE
NORTH HOBBS /GRYBG-SAN ANDRES/ UT 913-32	3002535385	03/2001	Grayburg-San Andres	Producer	ACTIVE
NORTH HOBBS /GRYBG-SAN ANDRES/ UT 923-29	3002536011	06/2003	Grayburg-San Andres	Injector	ACTIVE
NORTH HOBBS /GRYBG-SAN ANDRES/ UT 943-19	3002537435	12/2005	Grayburg-San Andres	Producer	TA
NORTH HOBBS /GRYBG-SAN ANDRES/ UT 944-29	3002535999	10/2002	Grayburg-San Andres	Producer	TA
NORTH HOBBS /GRYBG-SAN ANDRES/ UT 945-19	3002540859	03/2013	Grayburg-San Andres	Injector	ACTIVE
NORTH HOBBS /GRYBG-SAN ANDRES/ UT 946-18	3002541550	03/2014	Grayburg-San Andres	Producer	ACTIVE
NORTH HOBBS /GRYBG-SAN ANDRES/ UT 947-19	3002541551	03/2014	Grayburg-San Andres	Producer	INACTIVE
NORTH HOBBS /GRYBG-SAN ANDRES/ UT 948-33	3002541578	04/2014	Grayburg-San Andres	Producer	ACTIVE
NORTH HOBBS /GRYBG-SAN ANDRES/ UT 949-33	3002541643	04/2014	Grayburg-San Andres	Producer	ACTIVE
NORTH HOBBS /GRYBG-SAN ANDRES/ UT 950-18	3002542456	08/2015	Grayburg-San Andres	Injector	ACTIVE
NORTH HOBBS /GRYBG-SAN ANDRES/ UT 951-18	3002542484	07/2015	Grayburg-San Andres	Producer	P & A
NORTH HOBBS /GRYBG-SAN ANDRES/ UT 952-18	3002542478	07/2015	Grayburg-San Andres	Injector	ACTIVE
NORTH HOBBS /GRYBG-SAN ANDRES/ UT 953-18	3002542469	08/2015	Grayburg-San Andres	Injector	ACTIVE
NORTH HOBBS /GRYBG-SAN ANDRES/ UT 954-18	3002542490	10/2015	Grayburg-San Andres	Producer	ACTIVE
NORTH HOBBS /GRYBG-SAN ANDRES/ UT 955-18	3002542485	07/2015	Grayburg-San Andres	Producer	ACTIVE
NORTH HOBBS /GRYBG-SAN ANDRES/ UT 956-18	3002542470	08/2015	Grayburg-San Andres	Producer	ACTIVE
NORTH HOBBS /GRYBG-SAN ANDRES/ UT 957-18	3002542471	08/2015	Grayburg-San Andres	Producer	ACTIVE
NORTH HOBBS /GRYBG-SAN ANDRES/ UT 958-19	3002542454	06/2015	Grayburg-San Andres	Producer	ACTIVE
NORTH HOBBS /GRYBG-SAN ANDRES/ UT 959-18	3002542776	10/2015	Grayburg-San Andres	Injector	ACTIVE
NORTH HOBBS /GRYBG-SAN ANDRES/ UT 960-19	3002543840	12/2017	Grayburg-San Andres	Injector	ACTIVE

