

RHINE 13 FED

1

Rel
Depth
-10 -

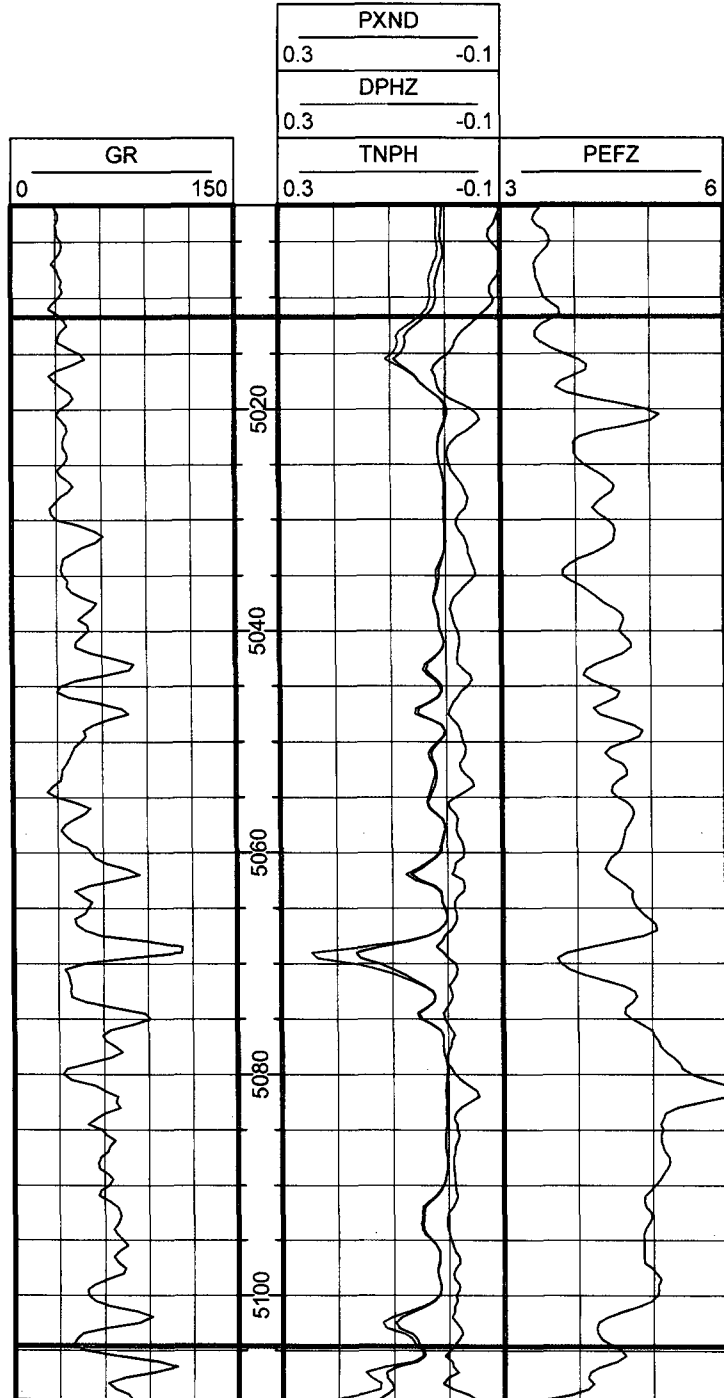
10 -

30 -

50 -

70 -

90 -



WFMP [JPFW]

Rel
Depth
-10

- 10

- 30

- 50

- 70

- 90

BASE_THAMES_PAY_2 [JPFW]

HS=1

PETRA 6/28/2006 3:53:55 PM

BEFORE THE OIL CONSERVATION DIVISION

Santa Fe, New Mexico

Case No. 13741 Exhibit No. 7

Submitted by:

EOG RESOURCES, INC.

Hearing Date: July 6, 2006