

DISTRICT I

25 N. French Dr., Hobbs, NM 88240

State of New Mexico
Energy, Minerals & Natural Resources Department

Form C-102
Revised August 15, 2000
Submit to Appropriate District Office
State EDDYse - 4 Copies
Fee EDDYse - 3 Copies

DISTRICT II

P.O. Drawer DD, Artesia, NM 88211-0719

DISTRICT III

1000 Rio Brazos Rd., Aztec, NM 87410

DISTRICT IV

2040 South Pacheco, Santa Fe, NM 87505

OIL CONSERVATION DIVISION
2040 South Pacheco
Santa Fe, NM 87505

☐ AMENDED REPORT

WELL LOCATION AND ACREAGE DEDICATION PLAT

API Number	Pool Code 75250	Pool Name COTTONWOOD CREEK-WOLFCAMP
Property Code	Property Name 1625 FED COM	Well Number 211
OGRID No. 18885	Operator Name LCX ENERGY, LLC	Elevation '3508'

Surface Location

UL or lot No.	Section	Township	Range	Lot Idn	Feet from the	North/South line	Feet from the	East/West line	County
P	21	16 S	25 E		960	SOUTH	660	EAST	EDDY

Bottom Hole Location If Different From Surface

UL or lot No.	Section	Township	Range	Lot Idn	Feet from the	North/South line	Feet from the	East/West line	County
M	21	16 S	25 E		960	SOUTH	660	WEST	EDDY

Dedicated Acres 320	Joint or Infill	Consolidation Code	Order No.
------------------------	-----------------	--------------------	-----------

NO ALLOWABLE WILL BE ASSIGNED TO THIS COMPLETION UNTIL ALL INTERESTS HAVE BEEN CONSOLIDATED OR A NON-STANDARD UNIT HAS BEEN APPROVED BY THE DIVISION

NOTE:

1) Plane Coordinates shown hereon are Transverse Mercator Grid and Conform to the "New Mexico Coordinate System", New Mexico East Zone, North American Datum of 1983. Distances shown hereon are mean horizontal surface values.

OPERATOR CERTIFICATION

I hereby certify the the information contained herein is true and complete to the best of my knowledge and belief.

Joe T. Janica
Signature
Joe T. Janica
Printed Name
Agent
Title
08/29/05
Date

SURVEYOR CERTIFICATION

I hereby certify that the well location shown on this plat was plotted from field notes of actual surveys made by me or under my supervision and that the same is true and correct to the best of my belief.

August 1, 2005
Date Surveyed
Signature & Seal of Professional Surveyor JSR

JSR
NMOCD CASE NO. 13757
AUGUST 17, 2006
LCX ENERGY, LLC
EXHIBIT NO. 1

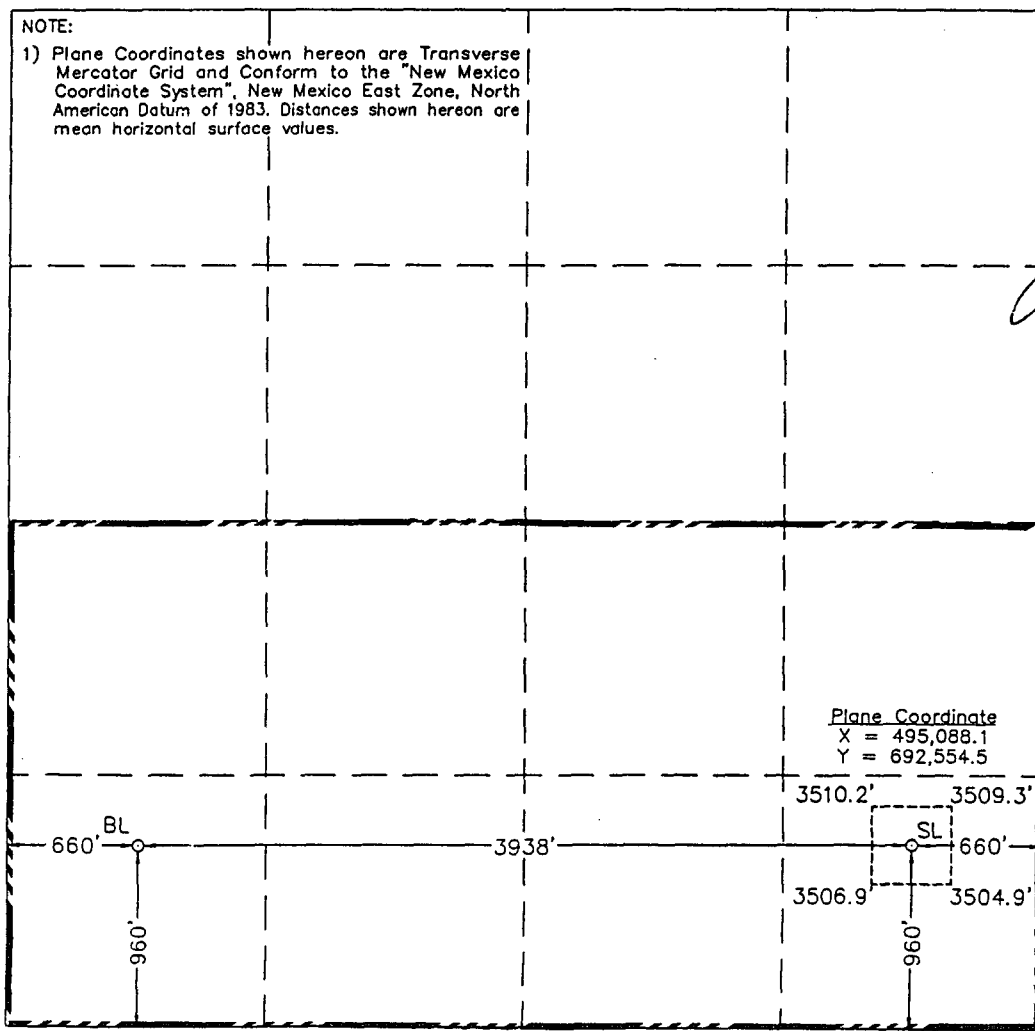


EXHIBIT "A"