

State of New Mexico

Energy, Minerals and Natural Resources Department

Form C-102

Revised October 12, 2006

Submit to Appropriate District Office

State Lease - 4 Copies

Fee Lease - 3 Copies

DISTRICT I

1225 N. FRENCH DR., BOHEMIA, NM 88240

DISTRICT II

1201 N. GRAND AVENUE, ARTISIA, NM 80810

DISTRICT III

1000 Rio Grande Rd., Artec, NM 87410

DISTRICT IV

1220 S. ST. FRANCIS DR., SANTA FE, NM 87505

OIL CONSERVATION DIVISION
1220 SOUTH ST. FRANCIS DR.
Santa Fe, New Mexico 87505

WELL LOCATION AND ACREAGE DEDICATION PLAT

AMENDED REPORT

API Number	Pool Code	Pool Name
Property Code	Property Name WEST BISHOP STATE	Well Number 1
OGSIS No.	Operator Name QUEST CHEROKEE, LLC	Elevation 3656'

Surface Location

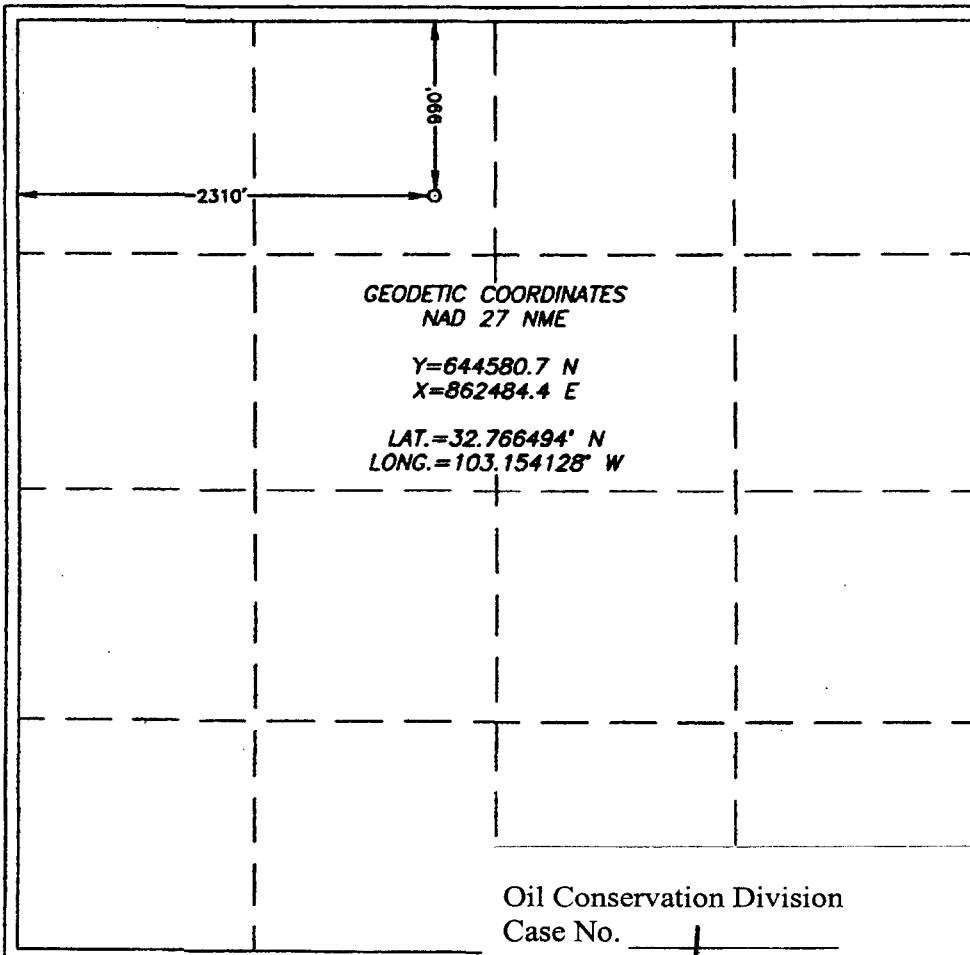
UL or lot No.	Section	Township	Range	Lot Idn	Feet from the	North/South line	Feet from the	East/West line	County
C	9	18-S	38-E		990	NORTH	2310	WEST	LEA

Bottom Hole Location If Different From Surface

UL or lot No.	Section	Township	Range	Lot Idn	Feet from the	North/South line	Feet from the	East/West line	County

Dedicated Acres	Joint or Infill	Consolidation Code	Order No.

NO ALLOWABLE WILL BE ASSIGNED TO THIS COMPLETION UNTIL ALL INTERESTS HAVE BEEN CONSOLIDATED OR A NON-STANDARD UNIT HAS BEEN APPROVED BY THE DIVISION



OPERATOR CERTIFICATION

I hereby certify that the information herein is true and complete to the best of my knowledge and belief, and that this organization either owns a working interest or unleased mineral interest in the land including the proposed bottom hole location or has a right to drill this well at this location pursuant to a contract with an owner of such mineral or working interest, or to a voluntary pooling agreement or a compulsory pooling order heretofore entered by the division.

Signature _____ Date _____

Printed Name _____

SURVEYOR CERTIFICATION

I hereby certify that the well location shown on this plat was plotted from field notes of actual surveys made by me or under my supervision, and that the same is true and correct to the best of my belief.

DECEMBER 12, 2006

Date Surveyed _____ AR

Signature & Seal of Professional Surveyor

Gary Edson 12/29/06

06.11.1859

Certificate No. GARY EDSON 12841

Oil Conservation Division
Case No. _____
Exhibit No. 1