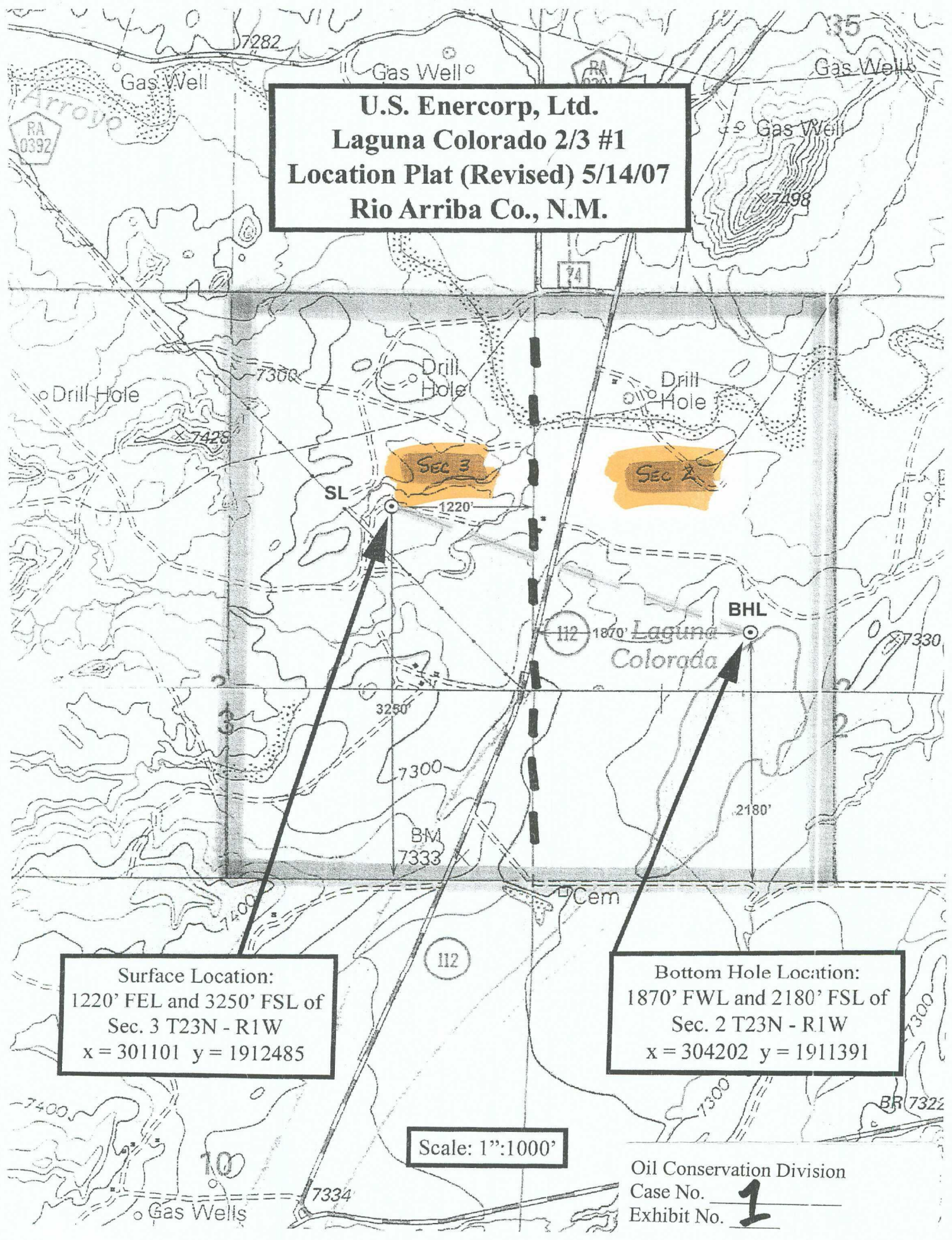


**U.S. Enercorp, Ltd.
Laguna Colorado 2/3 #1
Location Plat (Revised) 5/14/07
Rio Arriba Co., N.M.**



Surface Location:
1220' FEL and 3250' FSL of
Sec. 3 T23N - R1W
x = 301101 y = 1912485

Bottom Hole Location:
1870' FWL and 2180' FSL of
Sec. 2 T23N - R1W
x = 304202 y = 1911391

Scale: 1"=1000'

Oil Conservation Division
Case No. 1
Exhibit No. 1