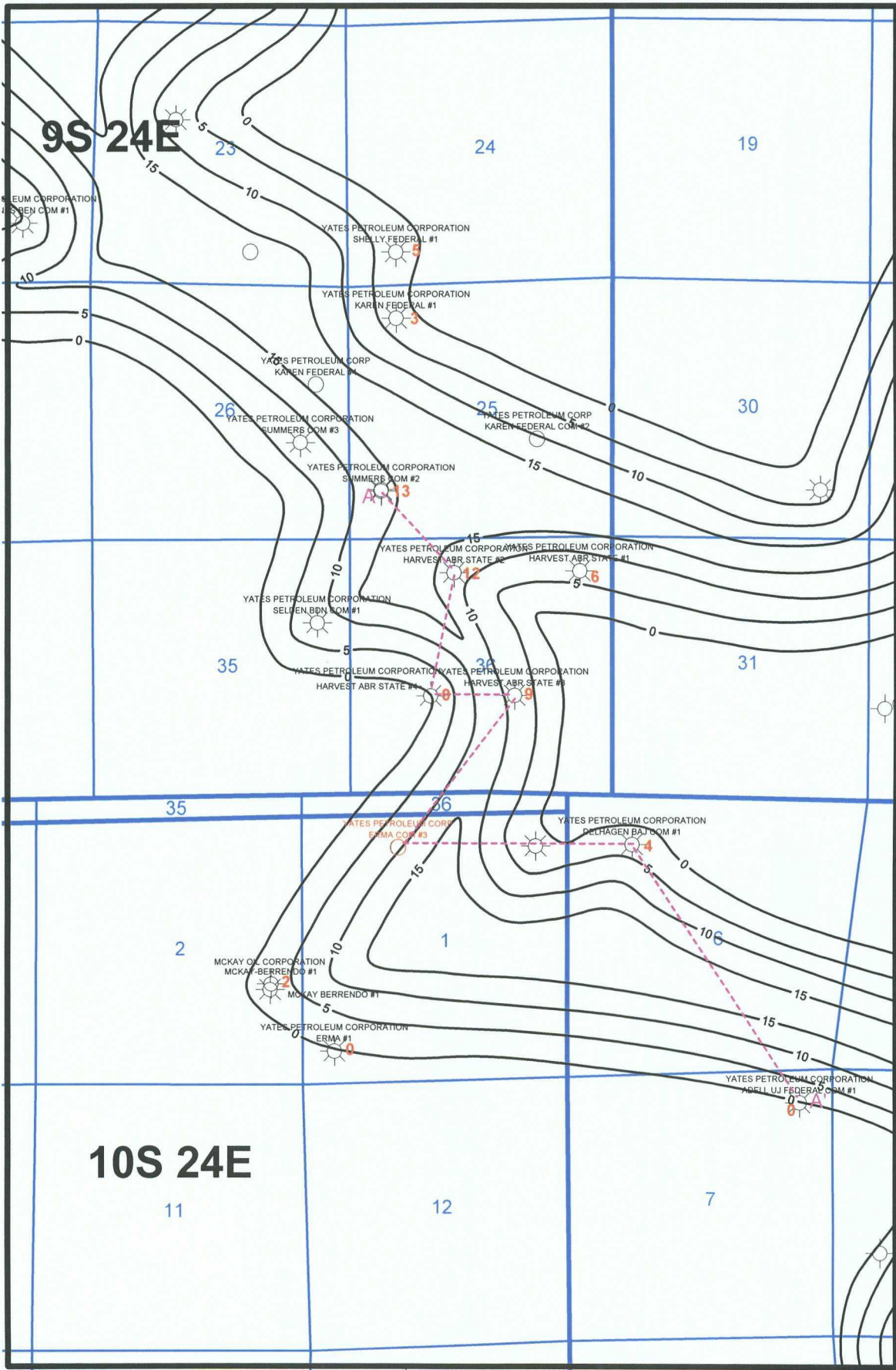
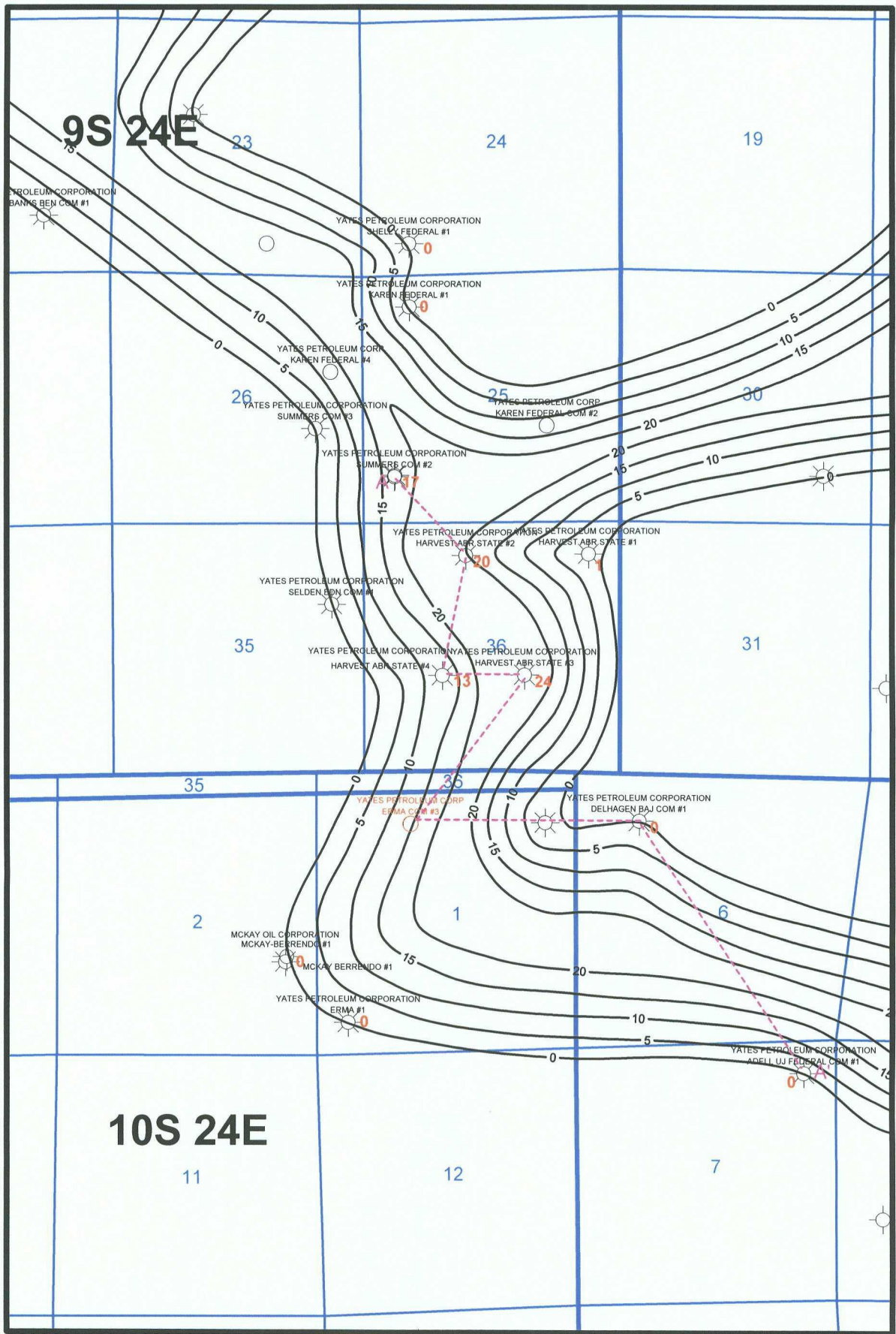


YATES PETROLEUM CORPORATION		
NET POROSITY ISOPACH ≥ 9% NEUTRON DENSITY X-OVER ABO A SAND INTERVAL CI: 5'		
Author: TIM MILLER		Date: 21 August, 2007
	Scale: 1"=3000'	ERMA3ABOA.GMP

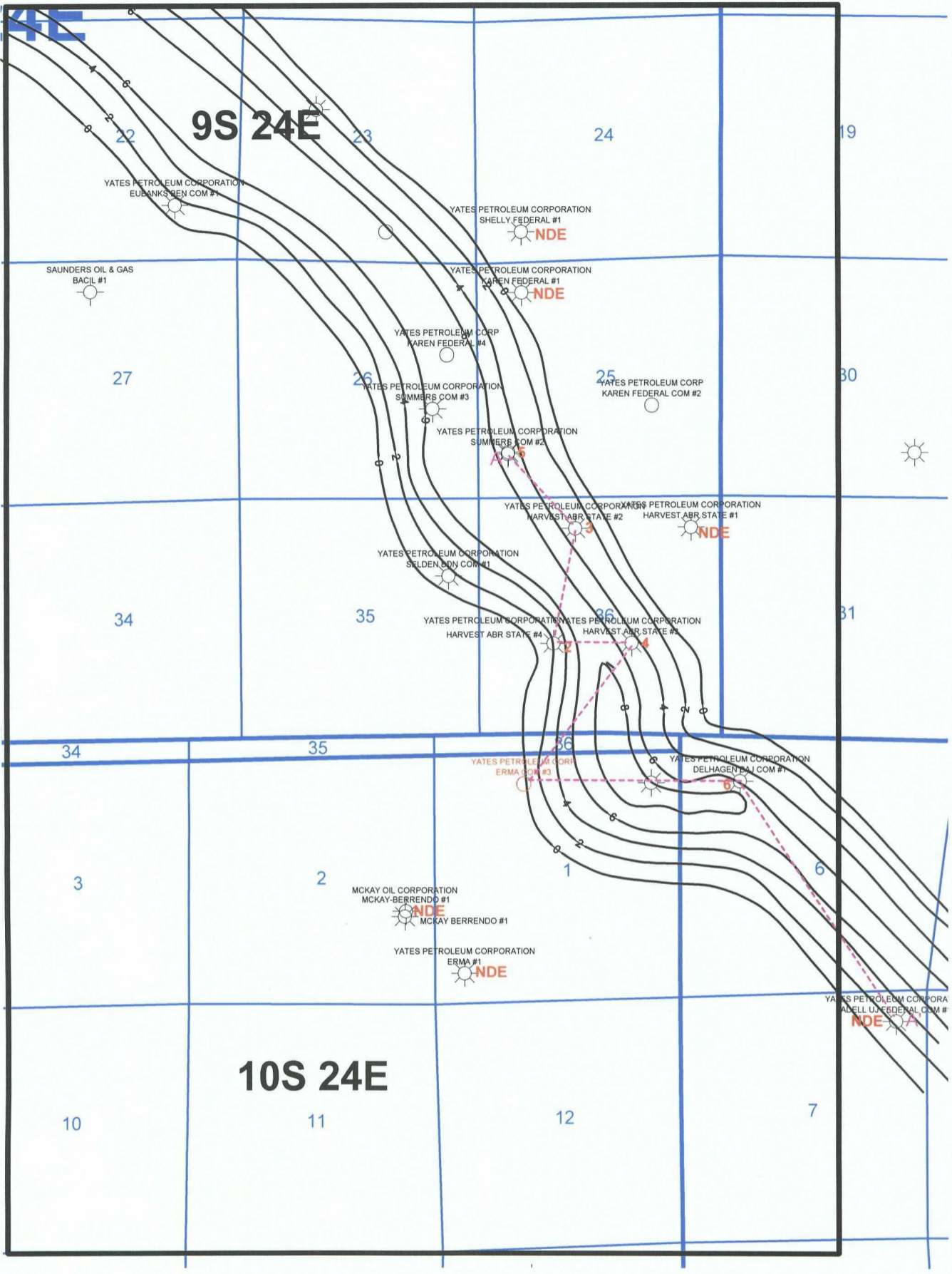
BEFORE THE OIL CONSERVATION DIVISION
 Santa Fe, New Mexico
 Case No. 13968....Exhibit No. 4
 Submitted by:
 Yates Petroleum Corporation
 Hearing Date: August 23, 2007



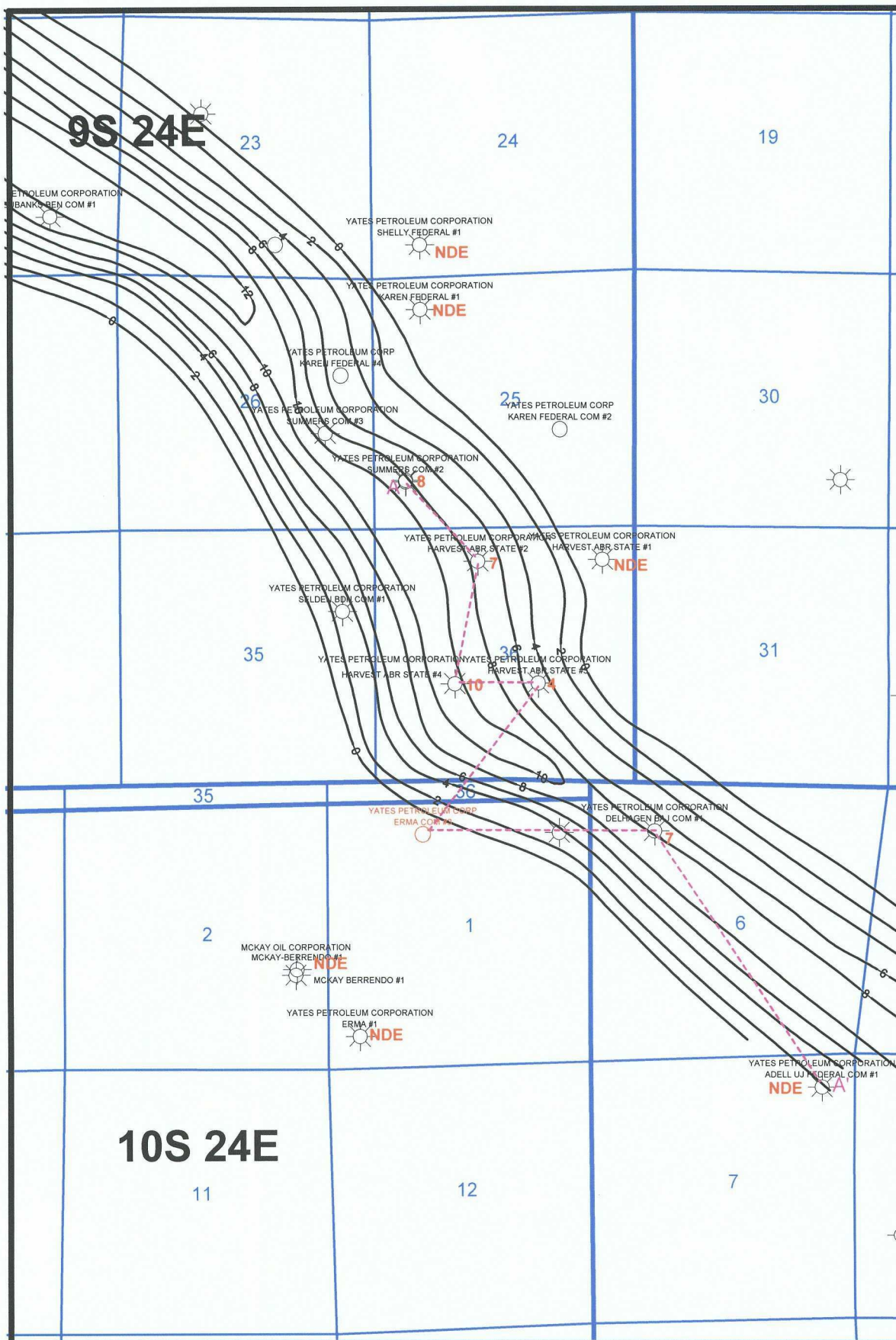
YATES PETROLEUM CORPORATION		
NET POROSITY ISOPACH $\geq 9\%$ NEUTRON DENSITY X-OVER ABO B SAND INTERVAL CI: 5'		
Author: TIM MILLER		Date: 21 August, 2007
	Scale: 1"=3000'	ERMA3ABOB.GMP



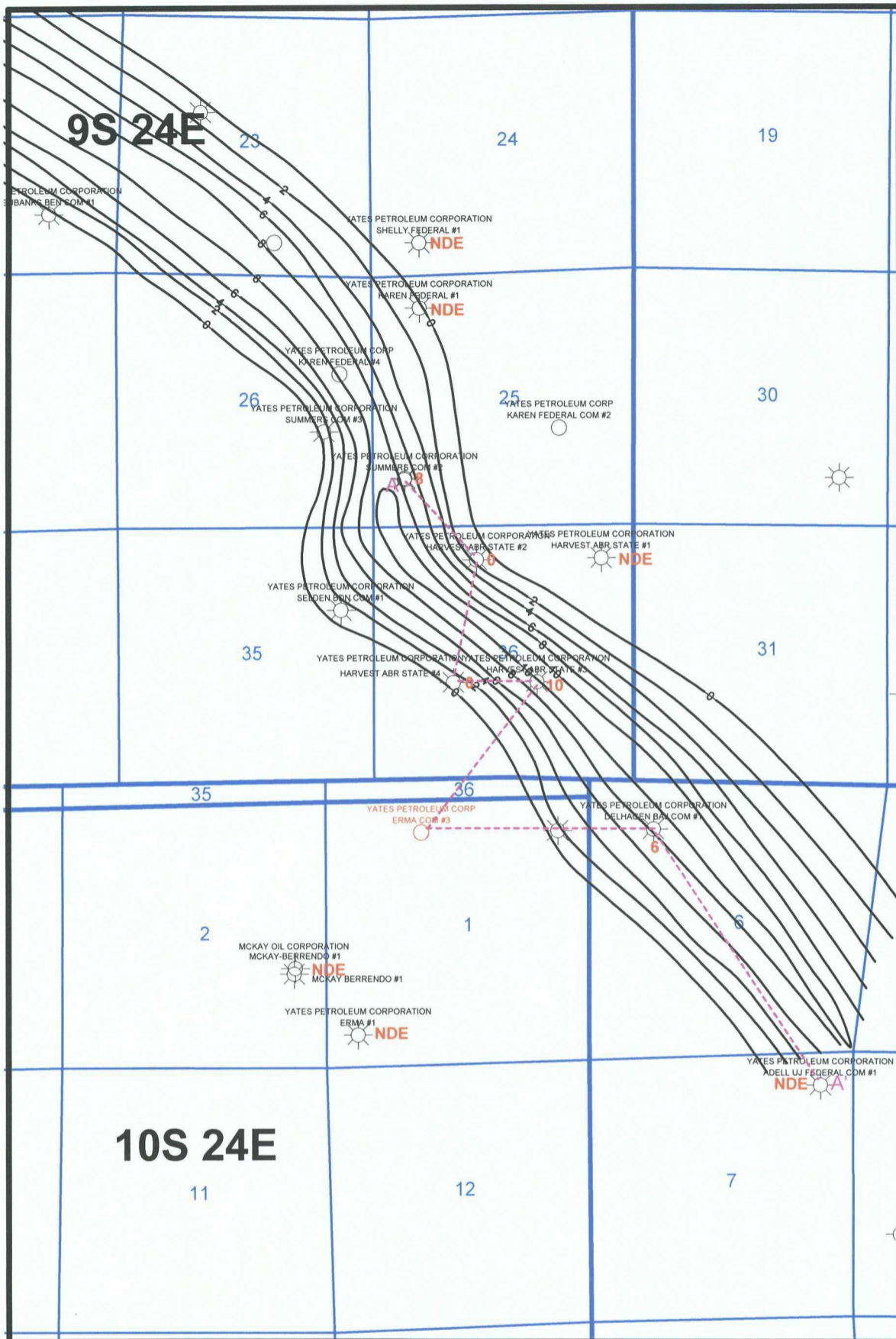
YATES PETROLEUM CORPORATION		
NET POROSITY ISOPACH ≥ 9% NEUTRON DENSITY X-OVER ABO C SAND INTERVAL CI: 5'		
Author: TIM MILLER		Date: 21 August, 2007
	Scale: 1"=3000'	ERMA3ABOC.GMP



YATES PETROLEUM CORPORATION		
GROSS ISOPACH ≥ 9% NEUTRON DENSITY X-OVER WOLFCAMP A SAND INTERVAL CI: 2'		
Author: TIM MILLER		Date: 21 August, 2007
	Scale: 1"=3000'	ERMA3 WFA.GMP



YATES PETROLEUM CORPORATION		
GROSS ISOPACH ≥ 9% NEUTRON DENSITY X-OVER WOLFCAMP B SAND INTERVAL CI: 2'		
Author: TIM MILLER		Date: 21 August, 2007
	Scale: 1"=3000'	ERMA3WFB.GMP



YATES PETROLEUM CORPORATION		
GROSS ISOPACH $\geq 9\%$ NEUTRON DENSITY X-OVER WOLFCAMP C SAND INTERVAL CI: 2'		
Author: TIM MILLER		Date: 21 August, 2007
	Scale: 1" = 3000'	ERMA3WFC.GMP