

A

A'

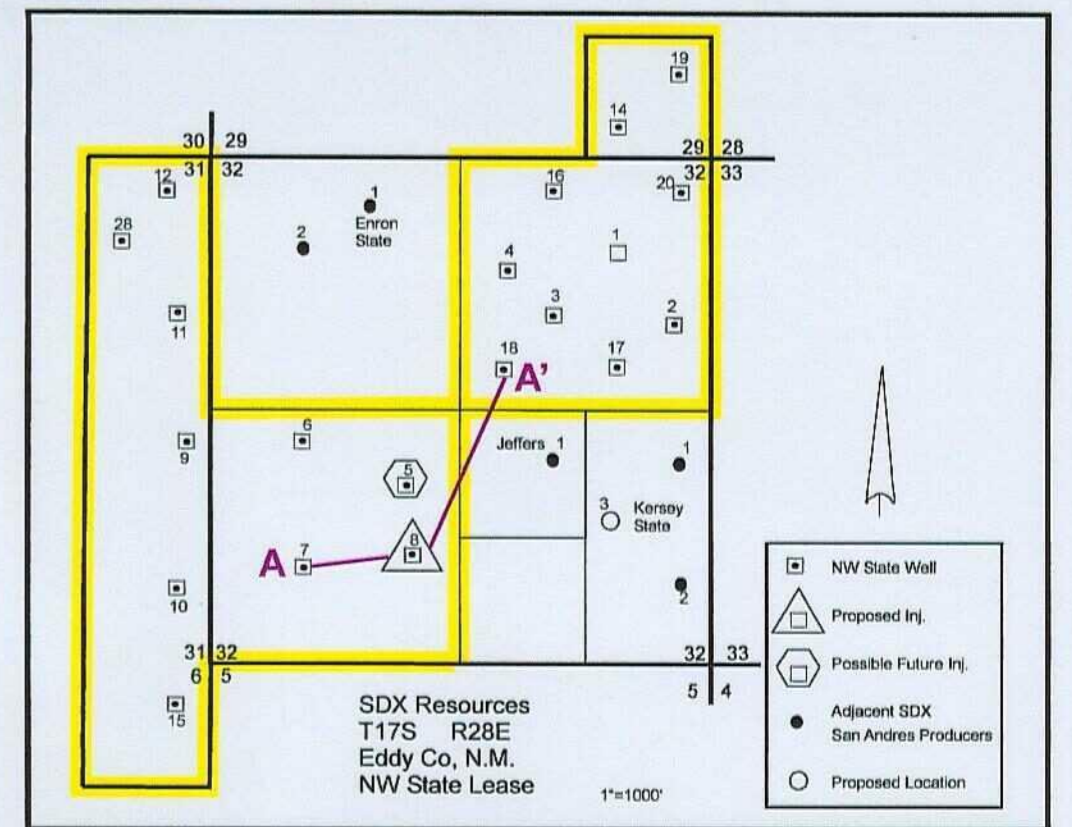
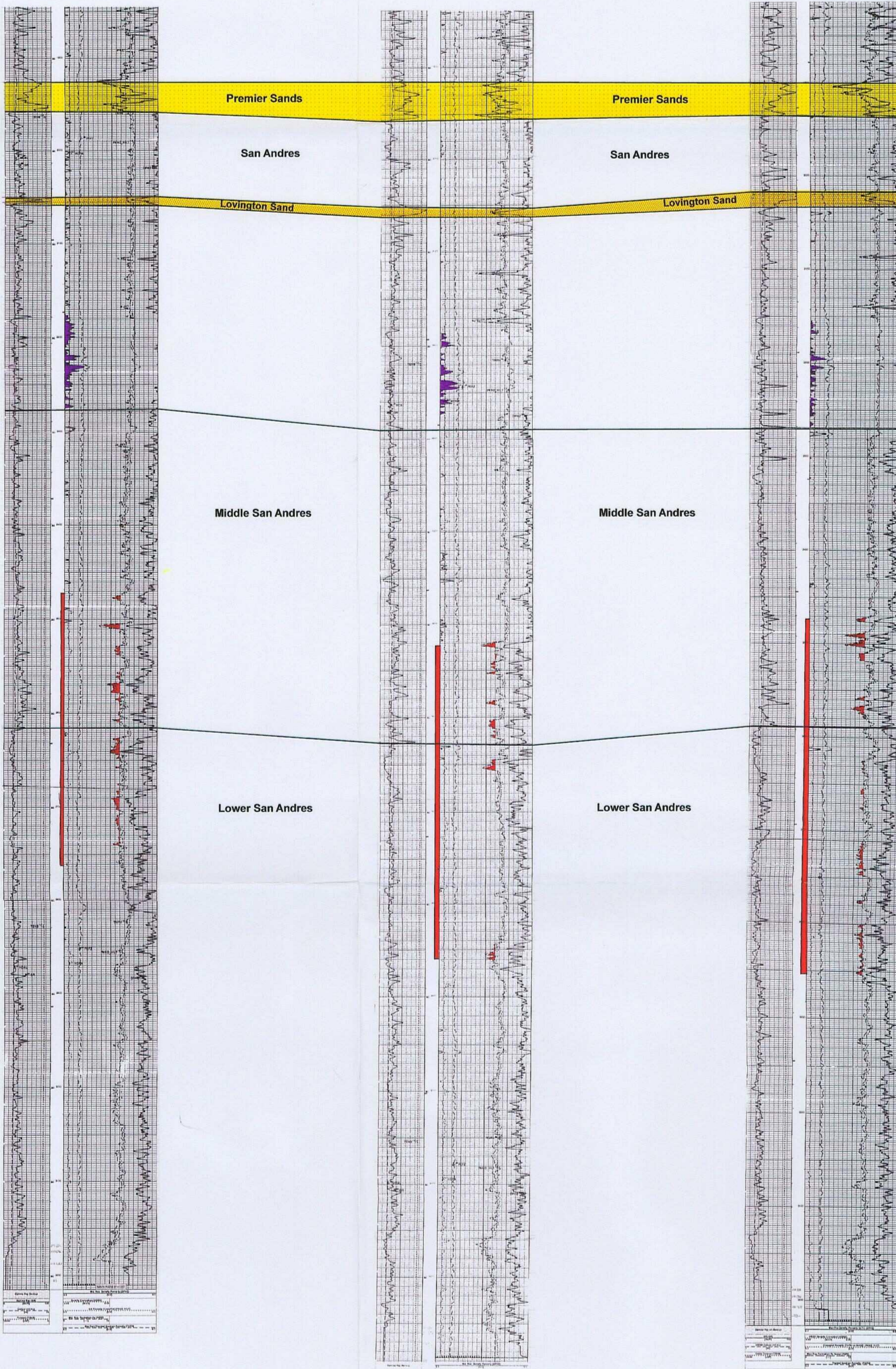
SDX RESOURCES, INC  
 N.W. State No. 7  
 990 FSL & 990 FWL  
 Sec. 32 T17S, R 28E  
 KB 3680

SDX RESOURCES, INC  
 N.W. State No. 8  
 1090 FSL & 2126 FWL  
 Sec. 32 T17S, R 28E  
 KB 3676

SDX RESOURCES, INC  
 N.W. State No. 18  
 2272 FSL & 2273 FWL  
 Sec. 32 T17S, R 28E  
 KB 3699

1/4 Mi.

1/2 Mi.



BEFORE THE OIL CONSERVATION COMMISSION  
 Santa Fe, New Mexico  
 Case No. 13923...Exhibit No. 2  
 Submitted by:  
 SDX RESOURCES, INC.  
 Hearing Date: May 23, 2007

09/28/99 Perf: 2472 - 2762  
 Acid: 3,500 Gal. 15% NEFE  
 Frac: 54,180 Gal. / 96,220 lb. 16/30  
 36,080 lb. 12/20  
 IP: 146 BO-289 BW-305 MCFG

12/27/99 Perf: 2523 - 2859  
 Acid: 3,500 Gal. 15% NEFE  
 Frac: 60,000 Gal. / 95,000 lb. 16/30  
 35,000 lb. 12/20  
 IP: 25 BO-100 BW-55 MCFG

4/06/02 Perf: 2472 - 2852  
 Acid: 3,500 Gal. 15% NEFE  
 Frac: 41,039 Gal. / 61,000 lb. 16/30  
 Blender Failed  
 Frac: 60,000 Gal. / 100,200 lb. 16/30  
 40,000 lb. 12/20  
 IP: 125 BO-90 BW-160 MCFG

**SDX RESOURCES, INC.**  
 NW State Area  
 EDDY COUNTY, NM  
 Stratigraphic Cross Section  
 Top Premier Sand-Datum  
 Section 8 T17S, R28E  
 May 2007