

A

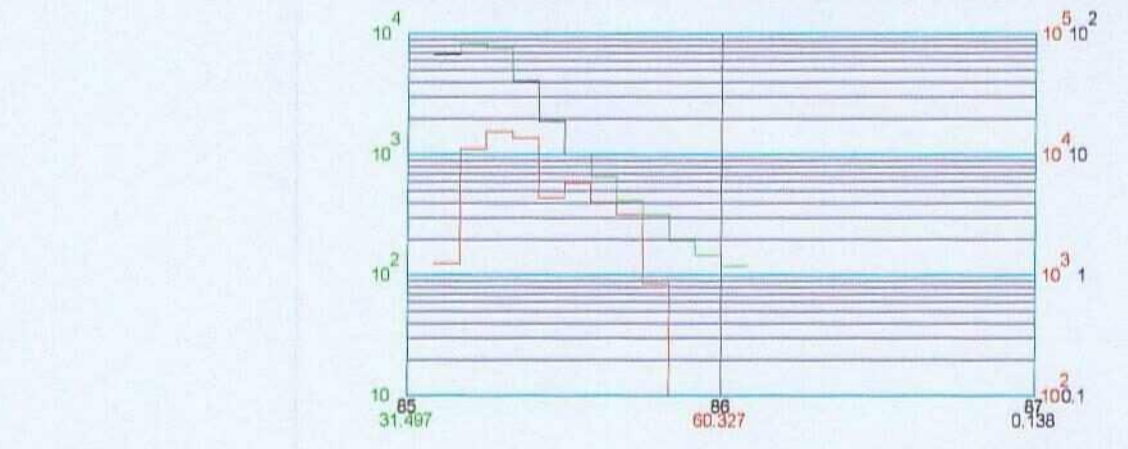
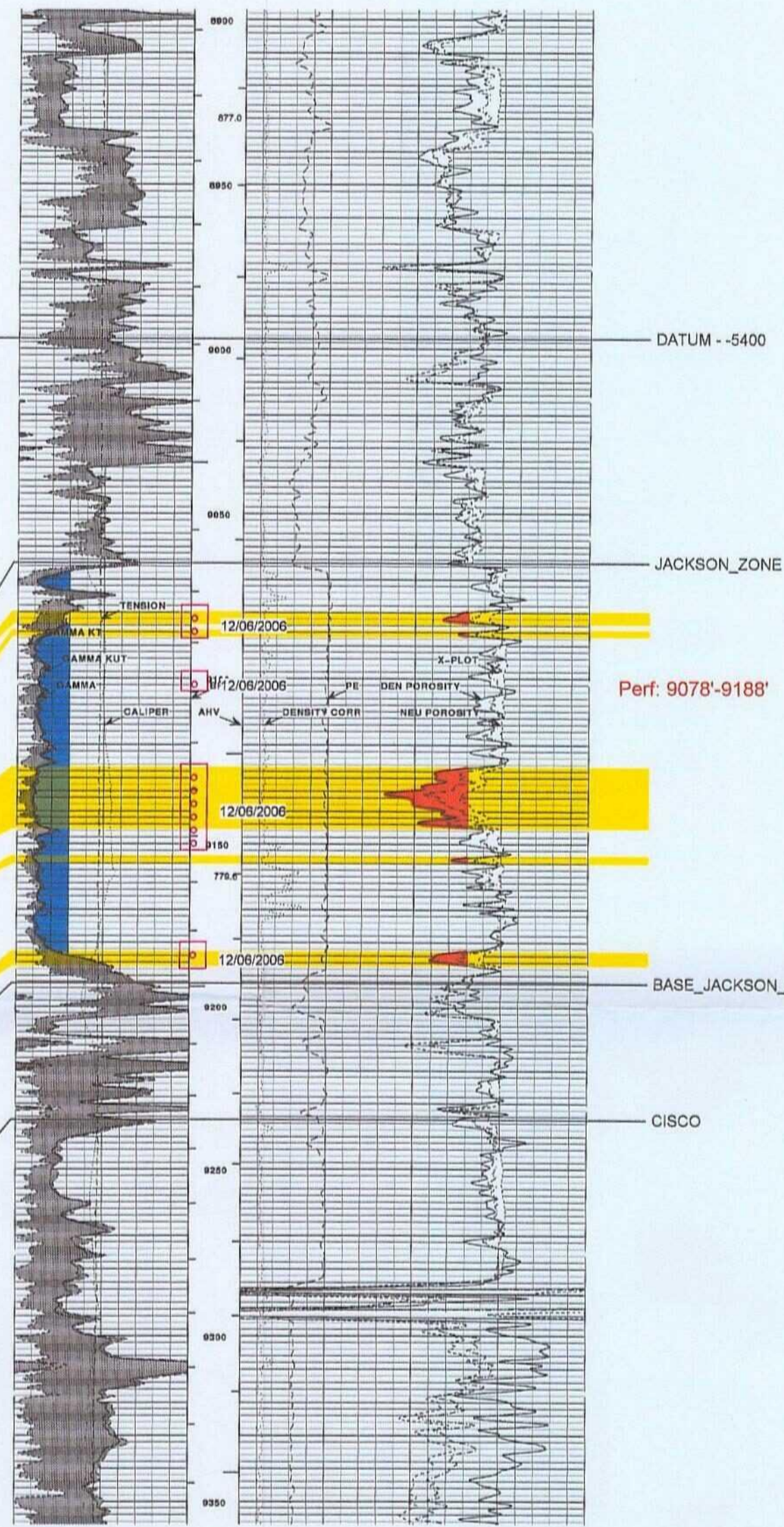
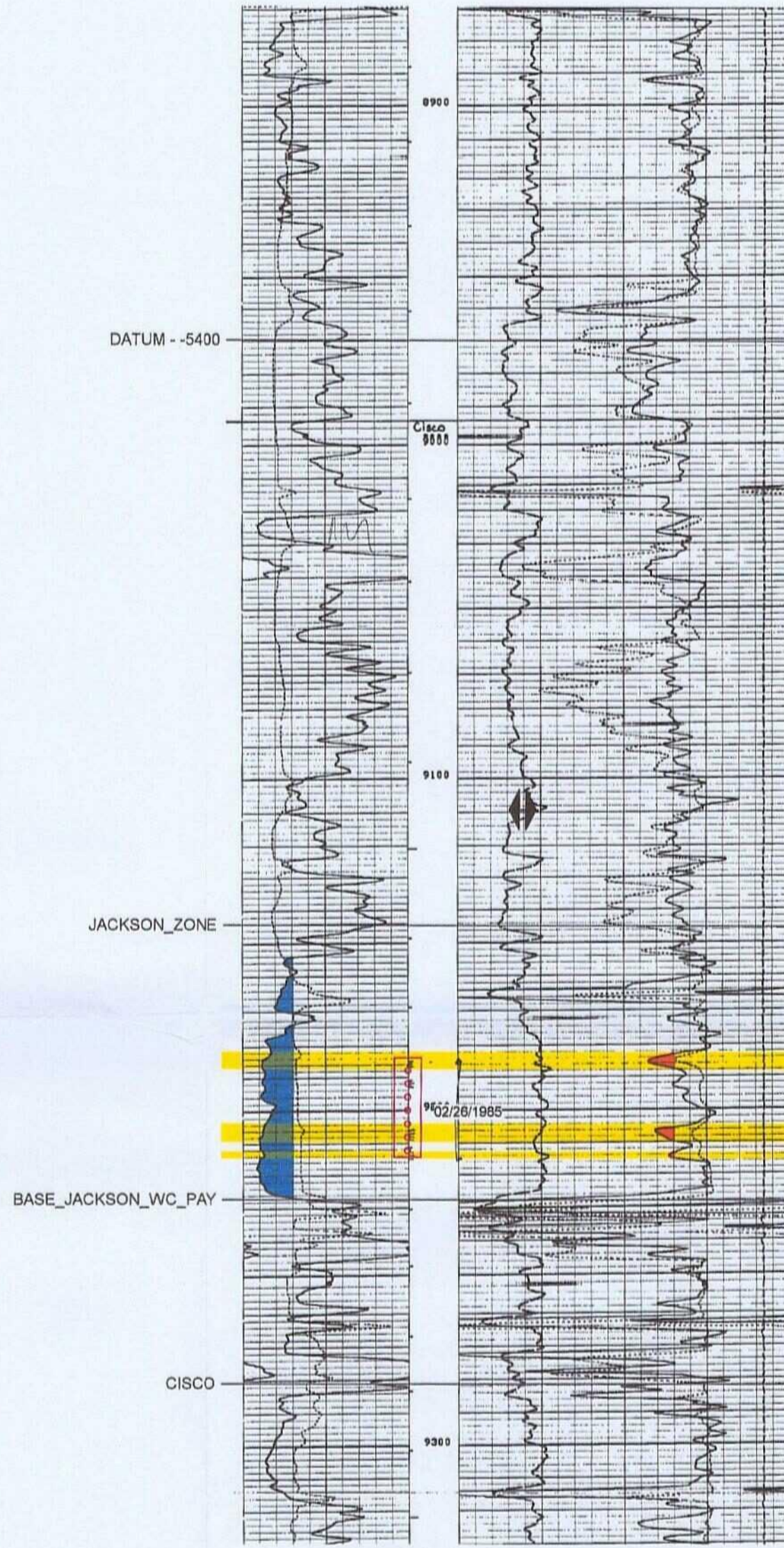
A'

ELEV_KB : 3,570

ELEV_KB : 3,597

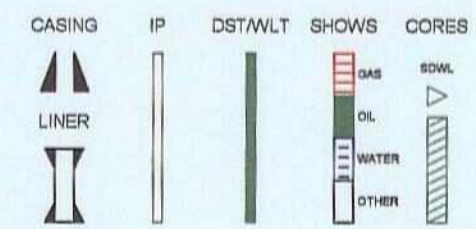
API Series : 25026
 COMP_DATE : 12/1/1984
 JACKSON FEDERAL
 1
 T17S R29E S35
 660 FNL 2310 FWL
G_WOLFCAMP : 60,327
 O_WOLFCAMP : 31,497
 W_WOLFCAMP : 138

API Series : 35025
 KEELY 26 FEDERAL
 1
 T17S R29E S26
 1980 FNL 1550 FEL



Test: IPF
 338 BPD OIL
 3 BB WATER

Oil Conservation Division
 Case No. 7
 Exhibit No.



Cimarex Energy Co	
High Lonesome Area	
Eddy County, NM	
Keely 26 Federal # 1	
Lower Wolfcamp X-Section A-A'	
TOPS AND MARKERS	
—	BASE_JACKSON_WC_PAY
—	JACKSON_ZONE
—	CISCO
—	DATUM - -5400
PERFS	
□	ACTIVE
□	INACTIVE
□	DRILLABLE
□	PROVEN PLUS
□	UNPROVEN PLUS
□	UNPROVEN
□	ABANDONED
□	SOLICITED
□	LINK
By: Lee Catalano	
April 5, 2007 9:14 AM	