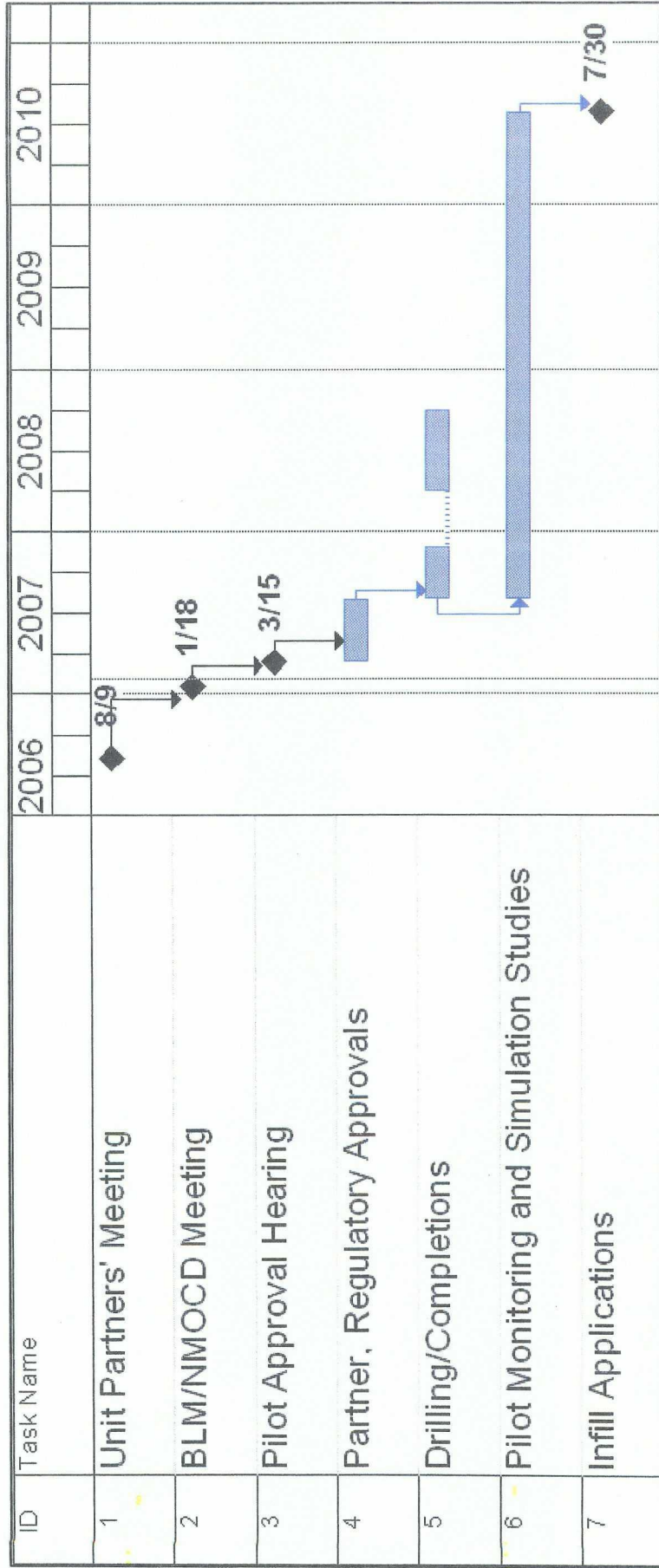


Preliminary Project Timeline



MV/DK Infill Pilot Cost Estimate

	MV (\$M)	DK (\$M)	Total (\$M)
New Wells/Completions (all directional)	11,399.5	12,723.6	24,123.1
2 MV/DK POWs	1,873.6	2,179.0	4,052.6
Logging (3 Plat Exp and 1 XPT)	163.0	113.1	276.1
Rotary Sidewall Cores (1 well: 34 MV, 20 DK)	52.7	33.0	85.8
After-Closure Analysis (3 wells)	94.4	94.4	188.7
Microseismic Frac Monitoring (1 well)	133.3	133.3	266.6
Spinner Surveys (17 wells, 8 runs per 2 years)	2,669.9	2,669.9	5,339.8
Grand Total	16,386.4	17,946.3	34,332.7