

SANDLOTT ENERGY
BUS. 505-396-6769 MO. 505-369-5856

DAUGHERITY ST. #1

NW/NW

SEC. 4-T18S-R28E
EDDY CO. NM 2029

DANGER

DO NOT
ENTER

ATTENTION ONLY
CALL 911
IN EMERGENCY

Jackie Brewer D/B/A
Sandlott Energy
Case 14074
OCD Exhibit No. 17

8-30-2005




Jackie Brewer D/B/A
Sandlott Energy
Case 14074
OCD Exhibit No. 17-A

8-30-2005



Jackie Brewer D/B/A
Sandlott Energy
Case 14074
OCD Exhibit No. 17-B

8.30.2005



*Jackie Brewer D/B/A
Sandlott Energy
Case 14074
OCD Exhibit No. 17-C*

8-30-2005

ECO Notification

Date: Thursday, October 20, 2005
To: Environmental Compliance Officer, NMOCD District II
Subject: Daugherty State Tank Battery - Sandlott Energy

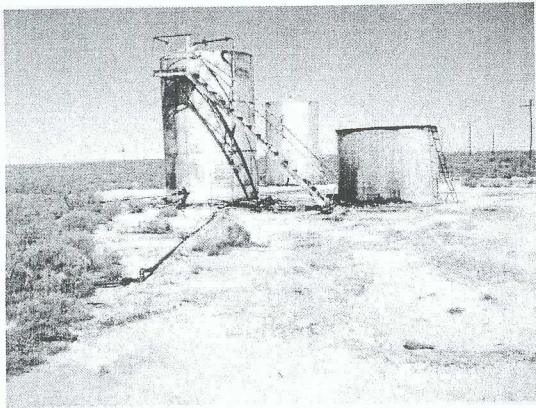


Photo of Tank Battery location, looking north.

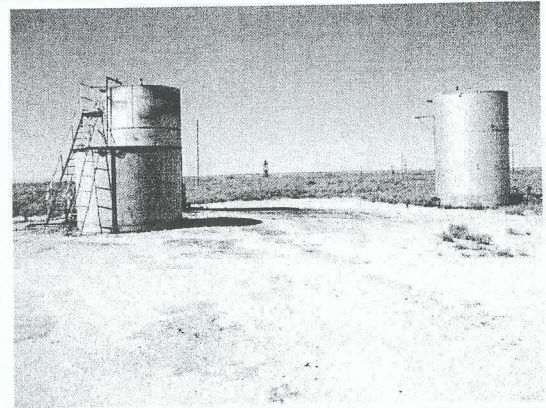


Photo of Tank Battery location, looking west.

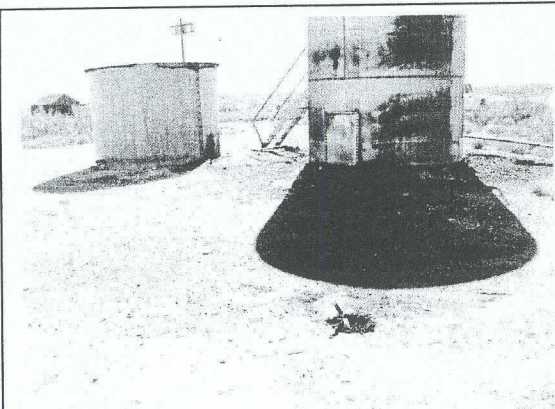


Photo of sample one location, north of tanks.

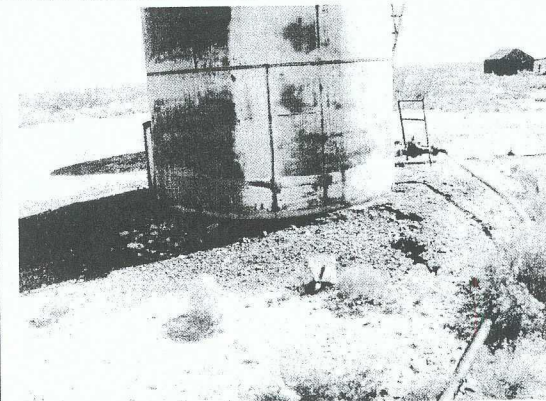


Photo of sample two locations, northwest of tanks.

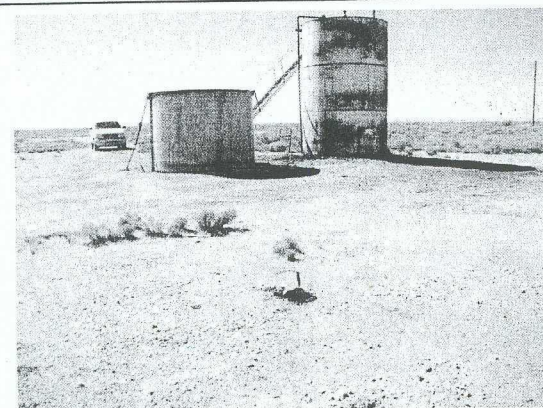


Photo of sample three location, northeast of tanks.

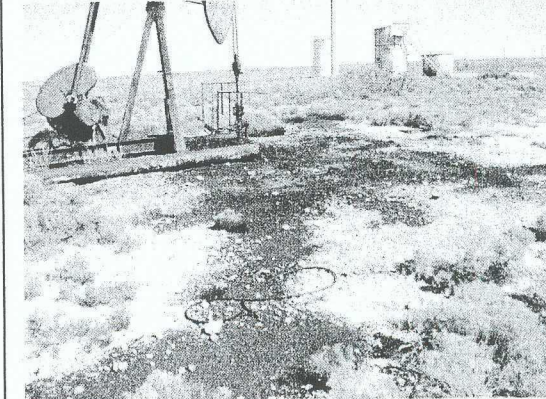
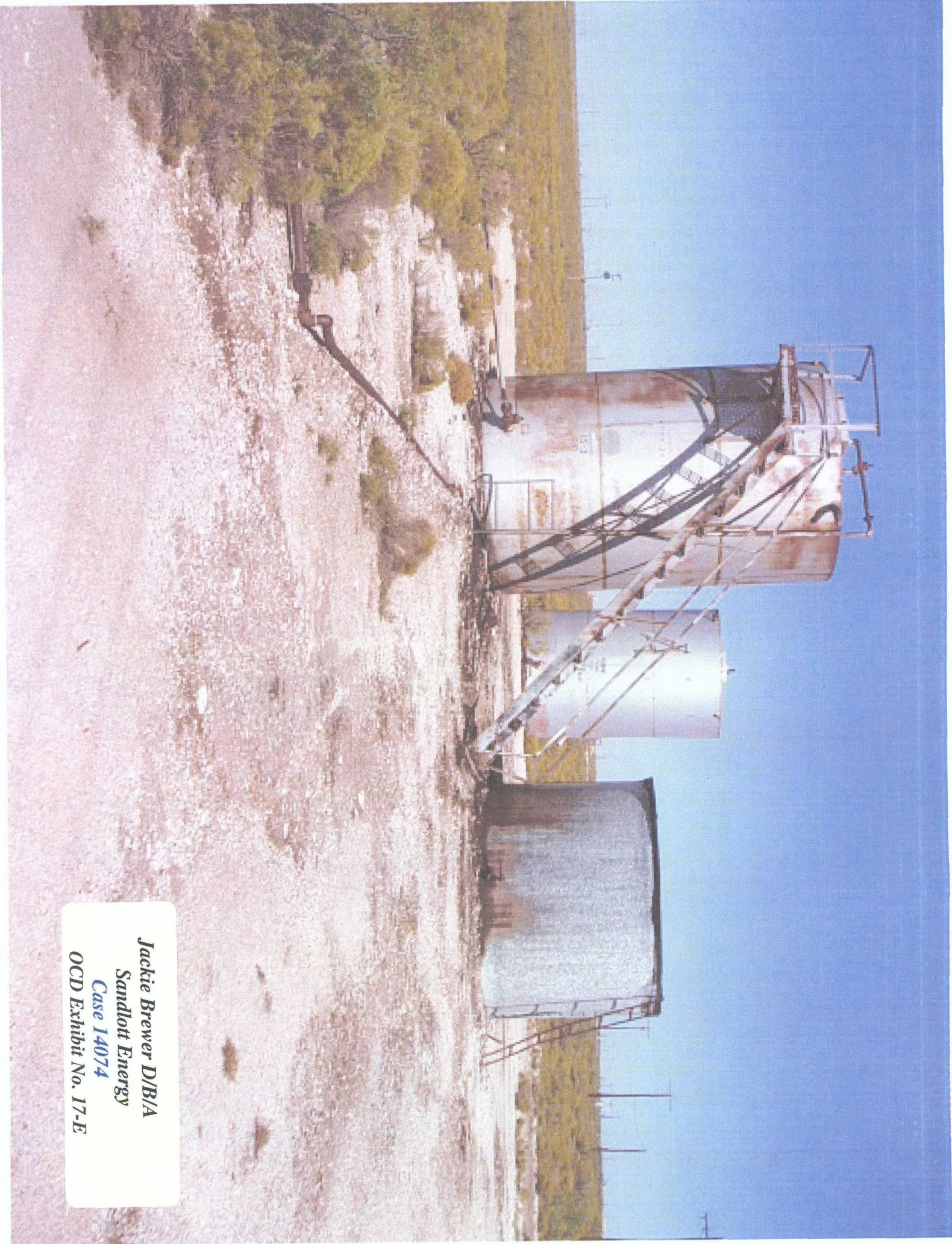
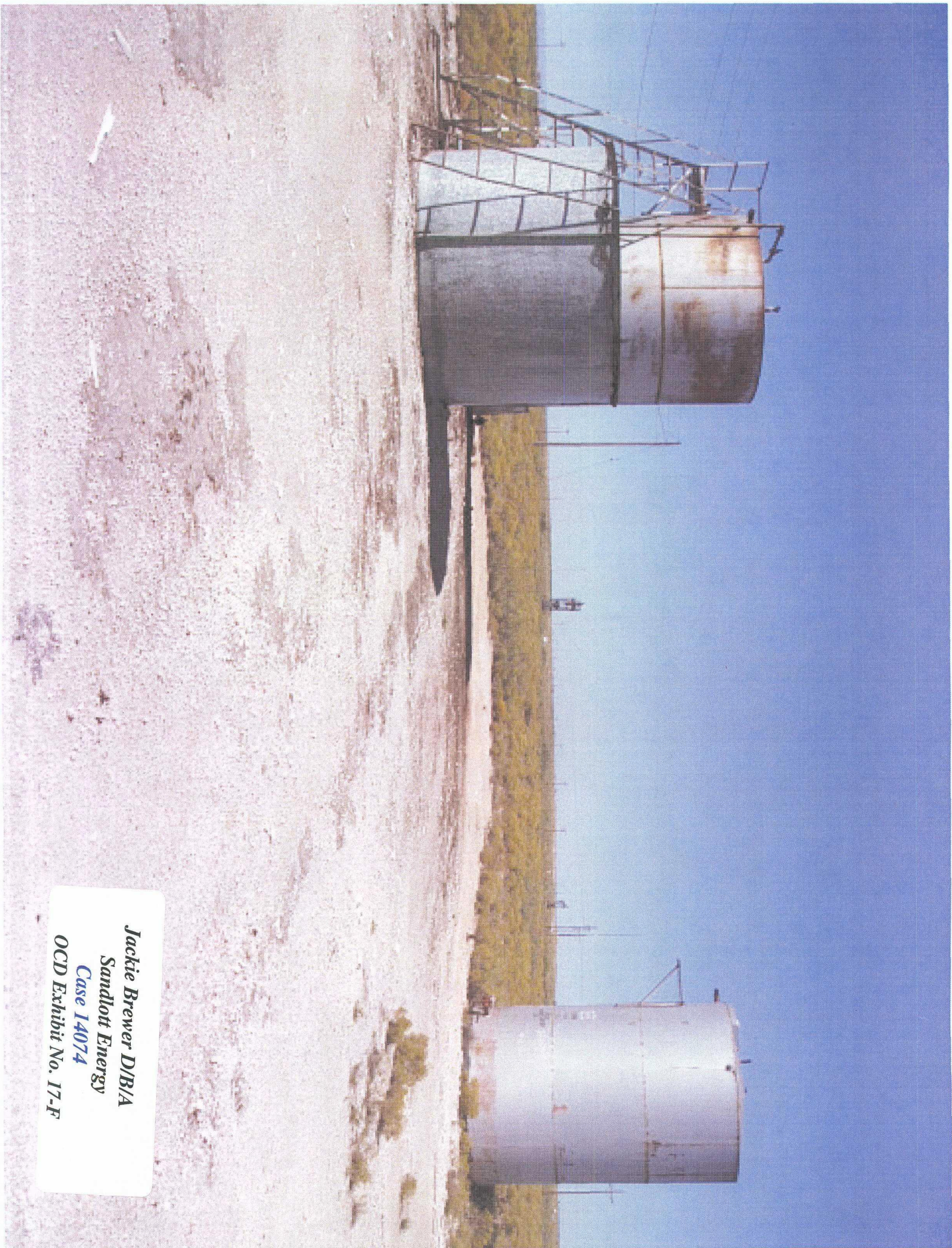


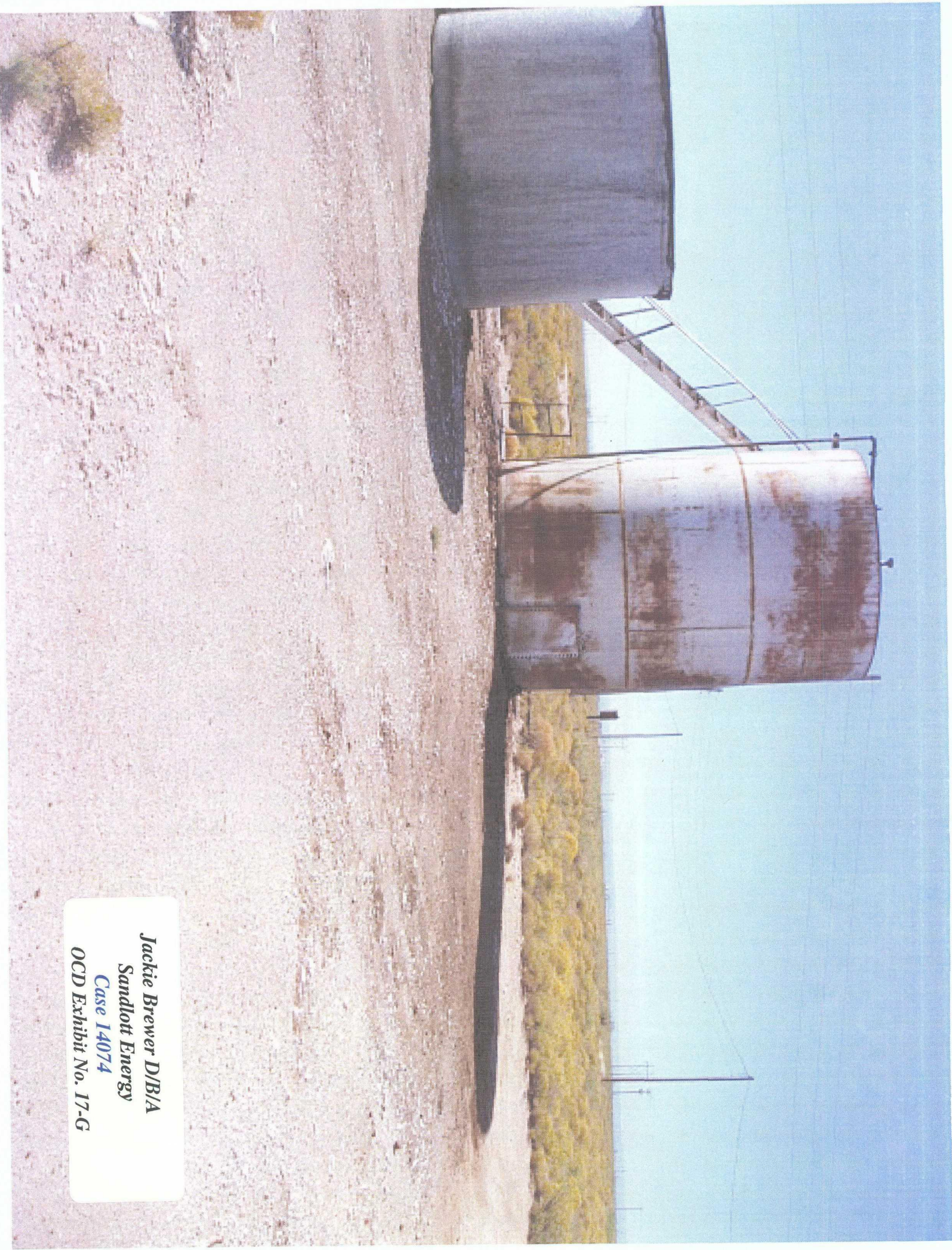
Photo of Tank Battery location from Daugherty State 1 well.



*Jackie Brewer D/B/A
Sandlott Energy
Case 14074
OCD Exhibit No. 17-E*



Jackie Brewer D/B/A
Sandlott Energy
Case 14074
OCD Exhibit No. 17-F



Jackie Brewer D/B/A
Sandlott Energy
Case 14074
OCD Exhibit No. 17-G

Jackie Brewer D/B/A
Sandlott Energy
Case 14074
OCD Exhibit No. 17-H



Jackie Brewer D/B/A
Sandlott Energy
Case 14074
OCD Exhibit No. 17-1



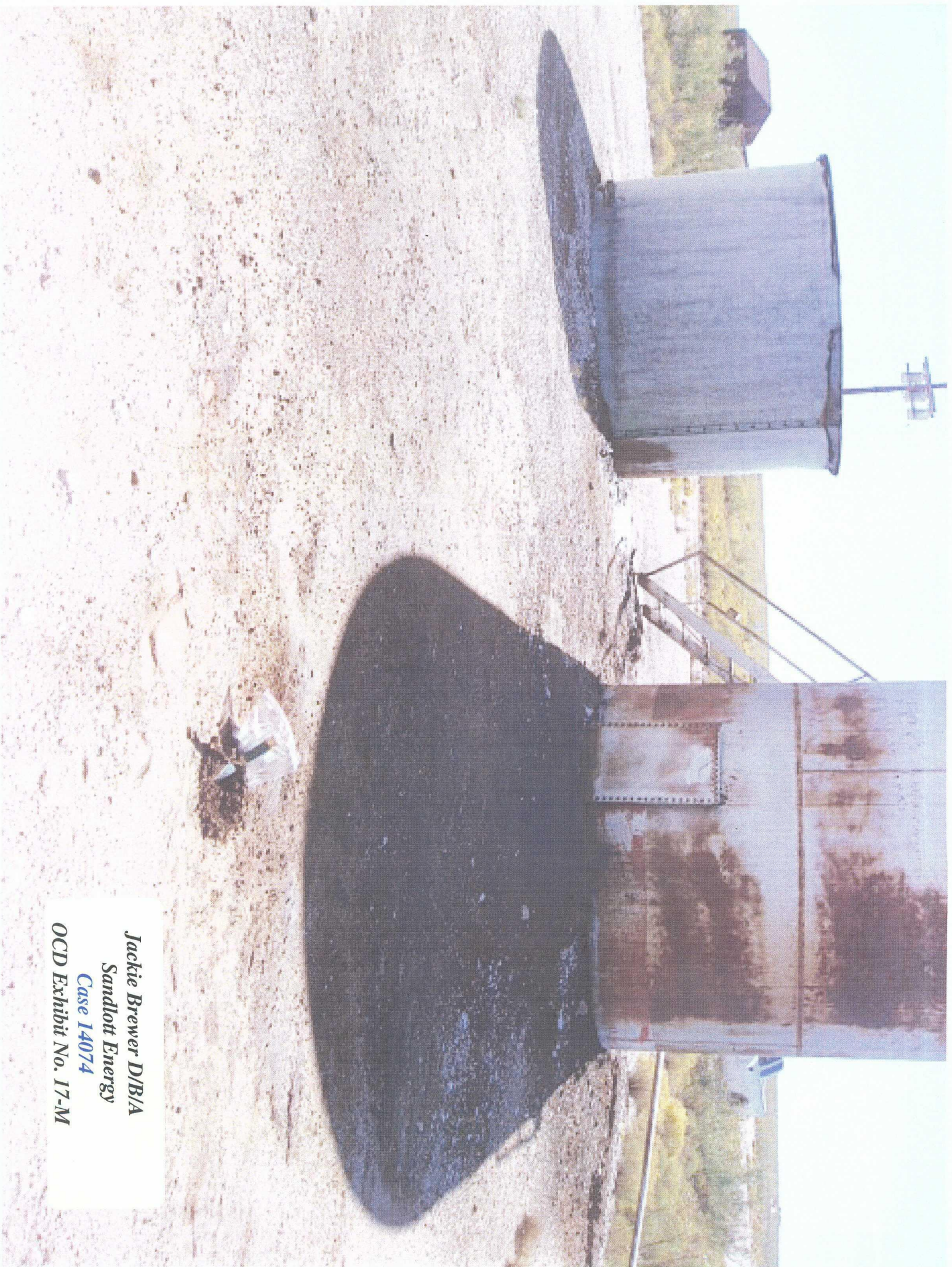
Jackie Brewer D/B/A
Sandlott Energy
Case 14074
OCD Exhibit No. 17-J



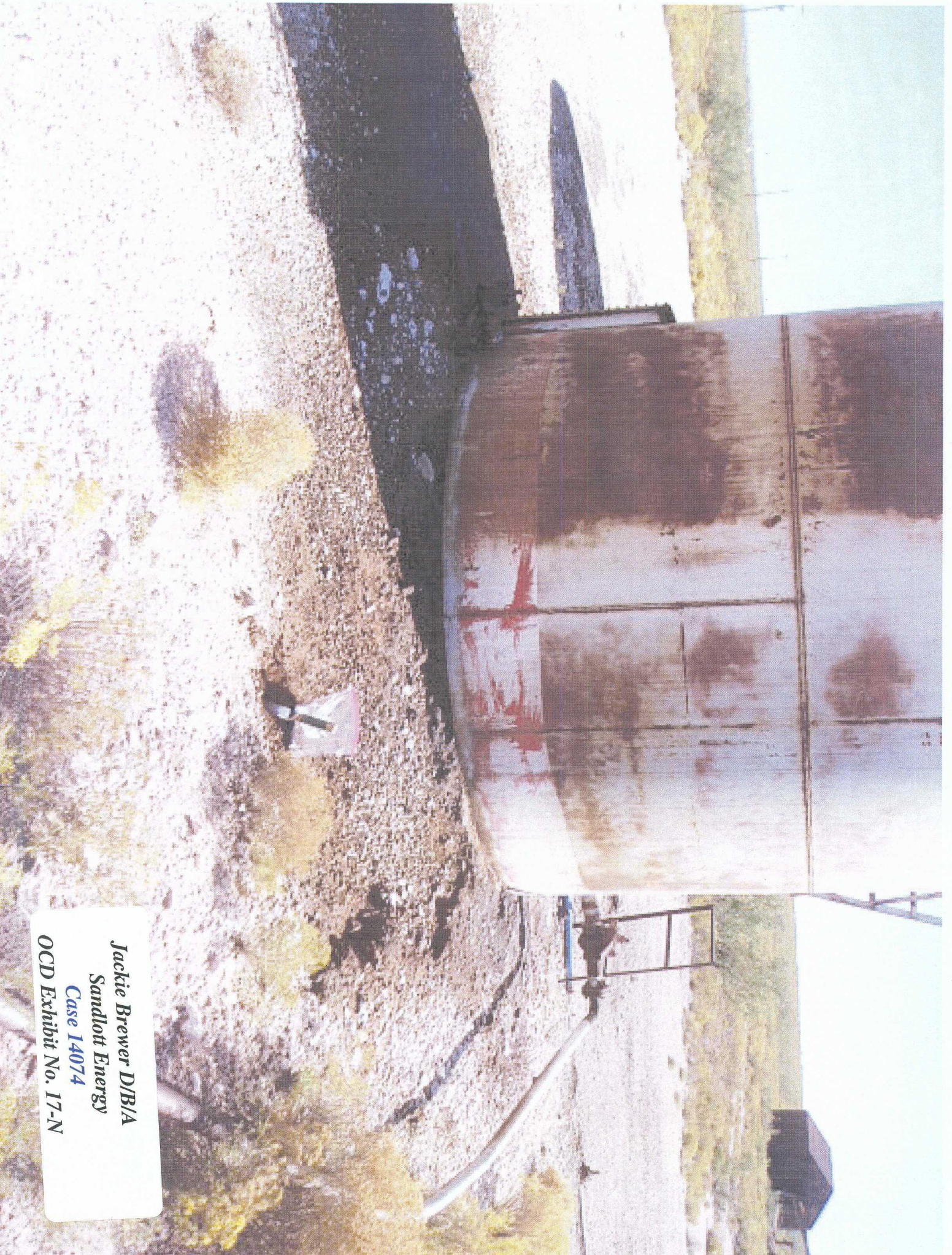
Jackie Brewer D/B/A
Sandlott Energy
Case 14074
OCD Exhibit No. 17-K



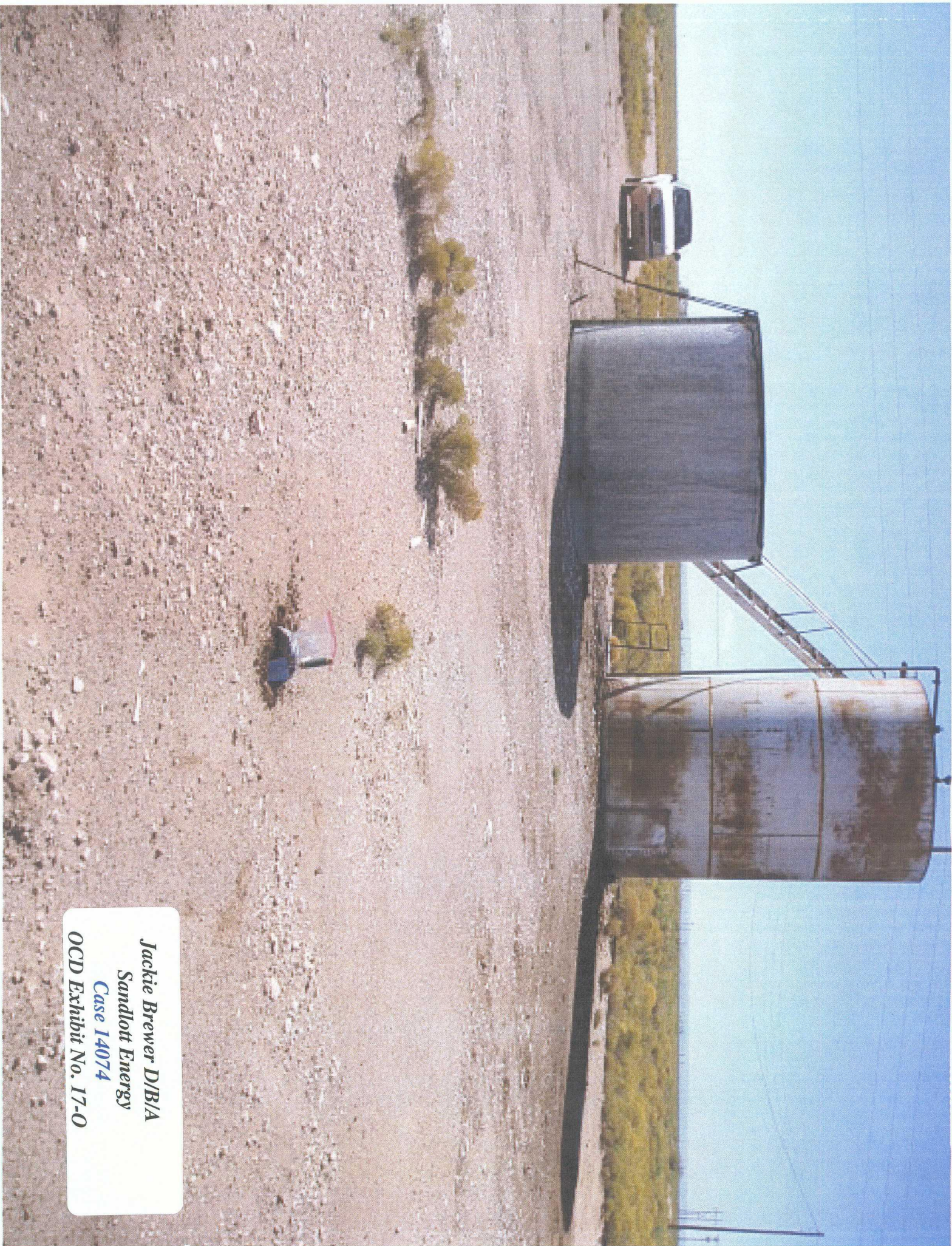
Jackie Brewer D/B/A
Sandlott Energy
Case 14074
OCD Exhibit No. 17-L



*Jackie Brewer D/B/A
Sandlott Energy
Case 14074
OCD Exhibit No. 17-M*



Jackie Brewer D/B/A
Sandlott Energy
Case 14074
OCD Exhibit No. 17-N



*Jackie Brewer D/B/A
Sandlott Energy
Case 14074
OCD Exhibit No. 17-0*

SANDLOTT ENERGY
BUS. 505-396-6769 MO. 505-369-5856

DAUGHERITY ST. #1

NW/NW

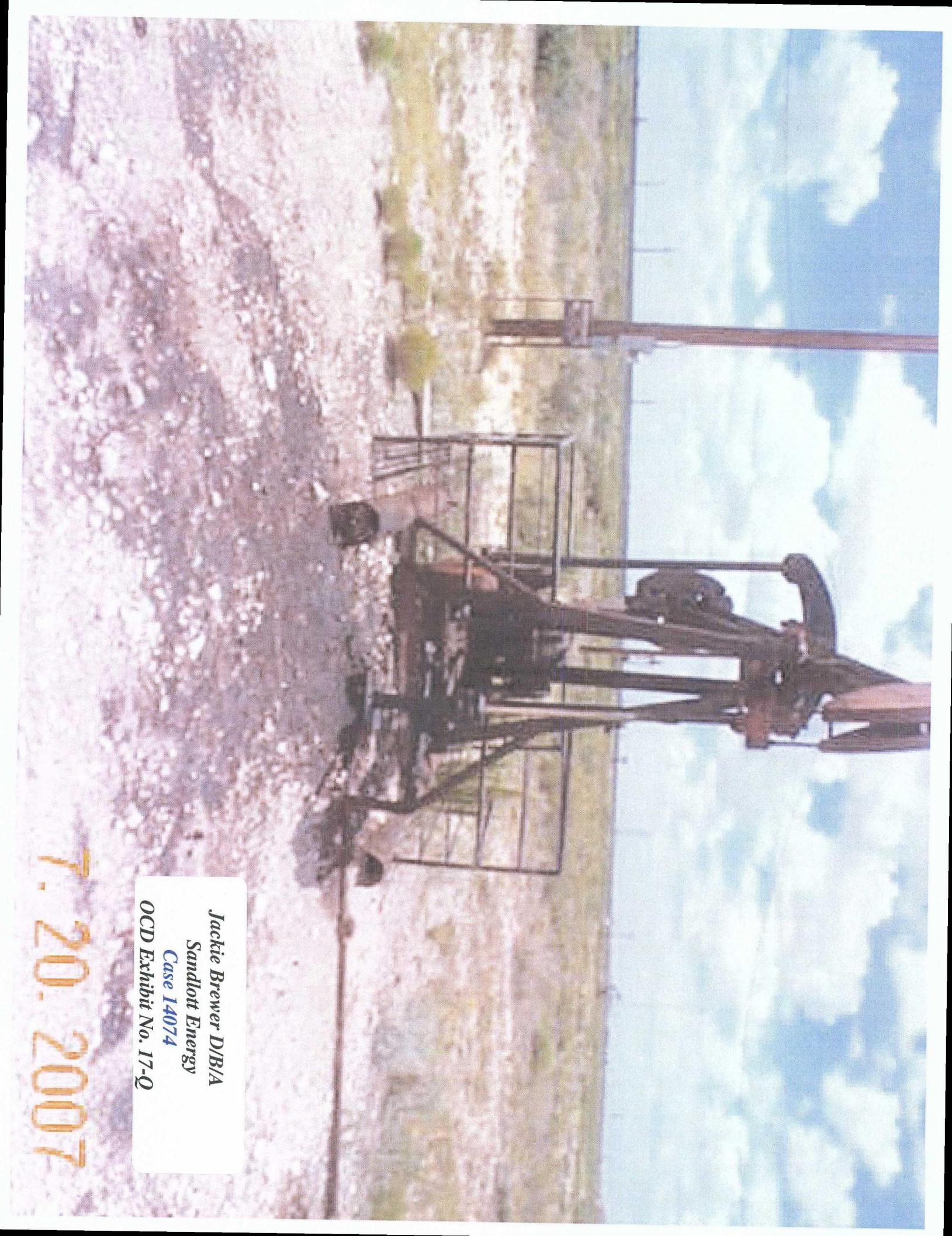
SEC. 4-T18S-R28E
EDDY CO. NM 2029



DANGER

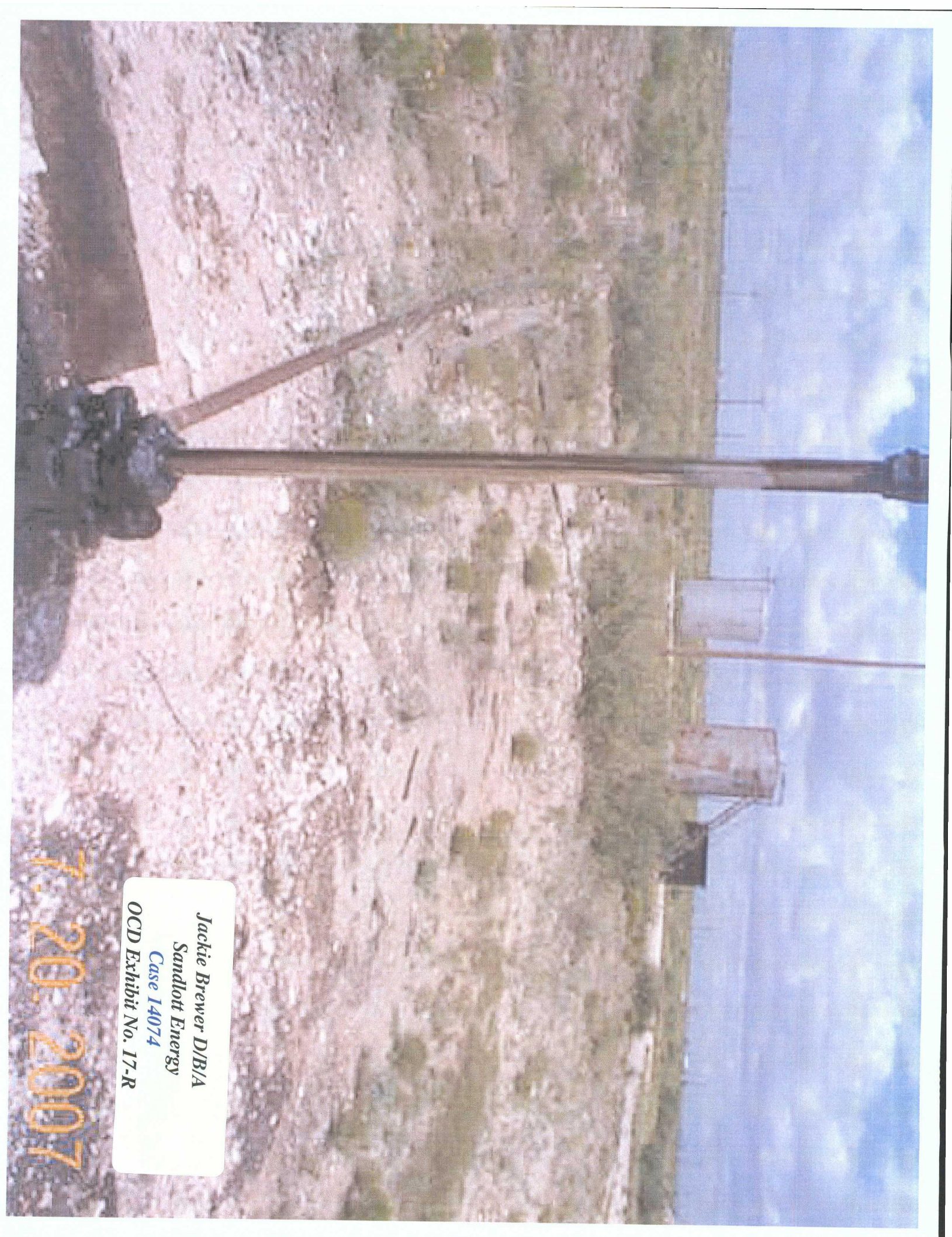
Jackie Brewer D/B/A
Sandlott Energy
Case 14074
OCD Exhibit No. 17-P

7.20.2007

A photograph of an oil pumpjack in a desert landscape. The pumpjack is a large, dark metal structure with a long, angled arm and a counterweight. It is situated on a gravelly, light-colored ground. In the background, there is a fence line and some sparse, dry vegetation. The sky is blue with scattered white clouds. The image is oriented horizontally on the page.

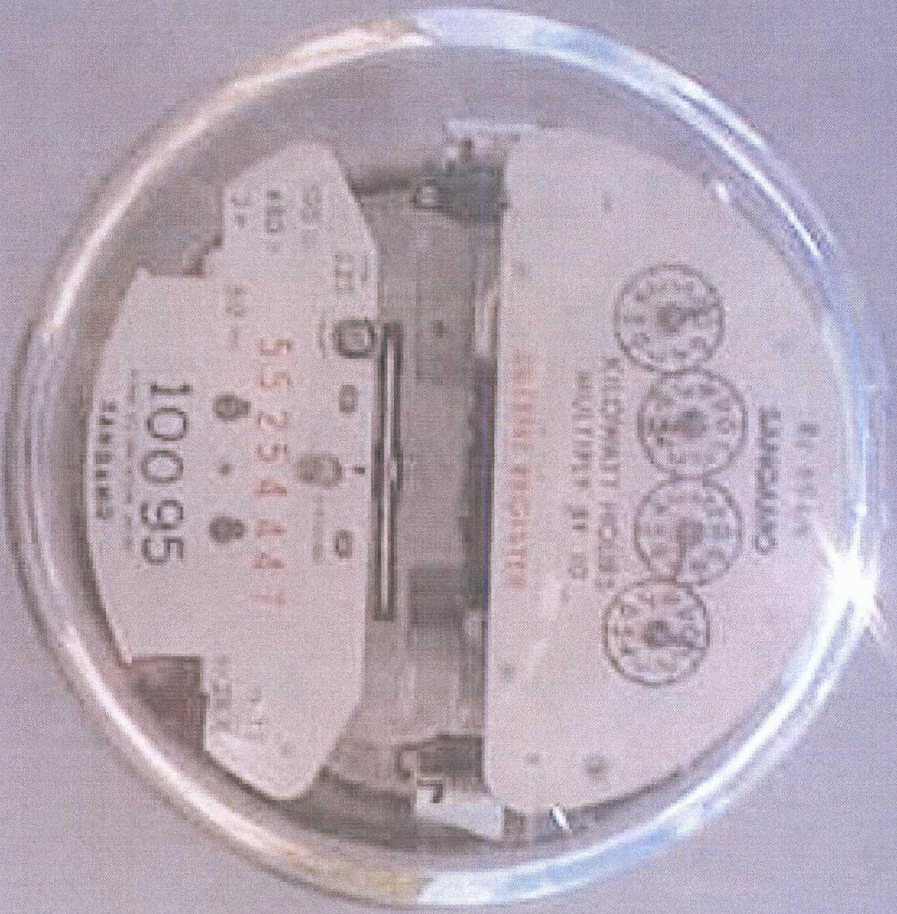
Jackie Brewer D/B/A
Sandlott Energy
Case 14074
OCD Exhibit No. 17-Q

7.20.2007



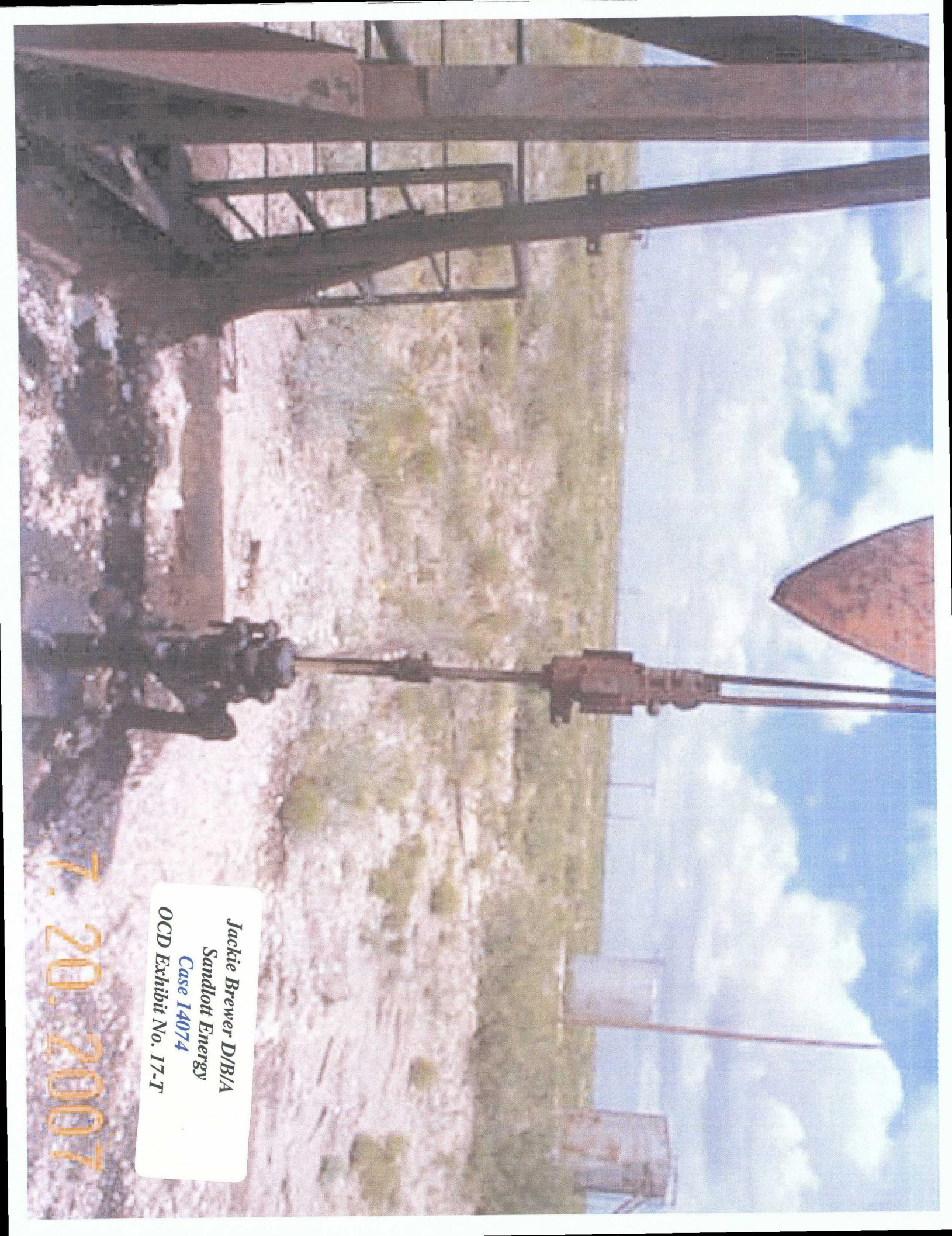
Jackie Brewer D/B/A
Sandlott Energy
Case 14074
OCD Exhibit No. 17-R

7.20.2007



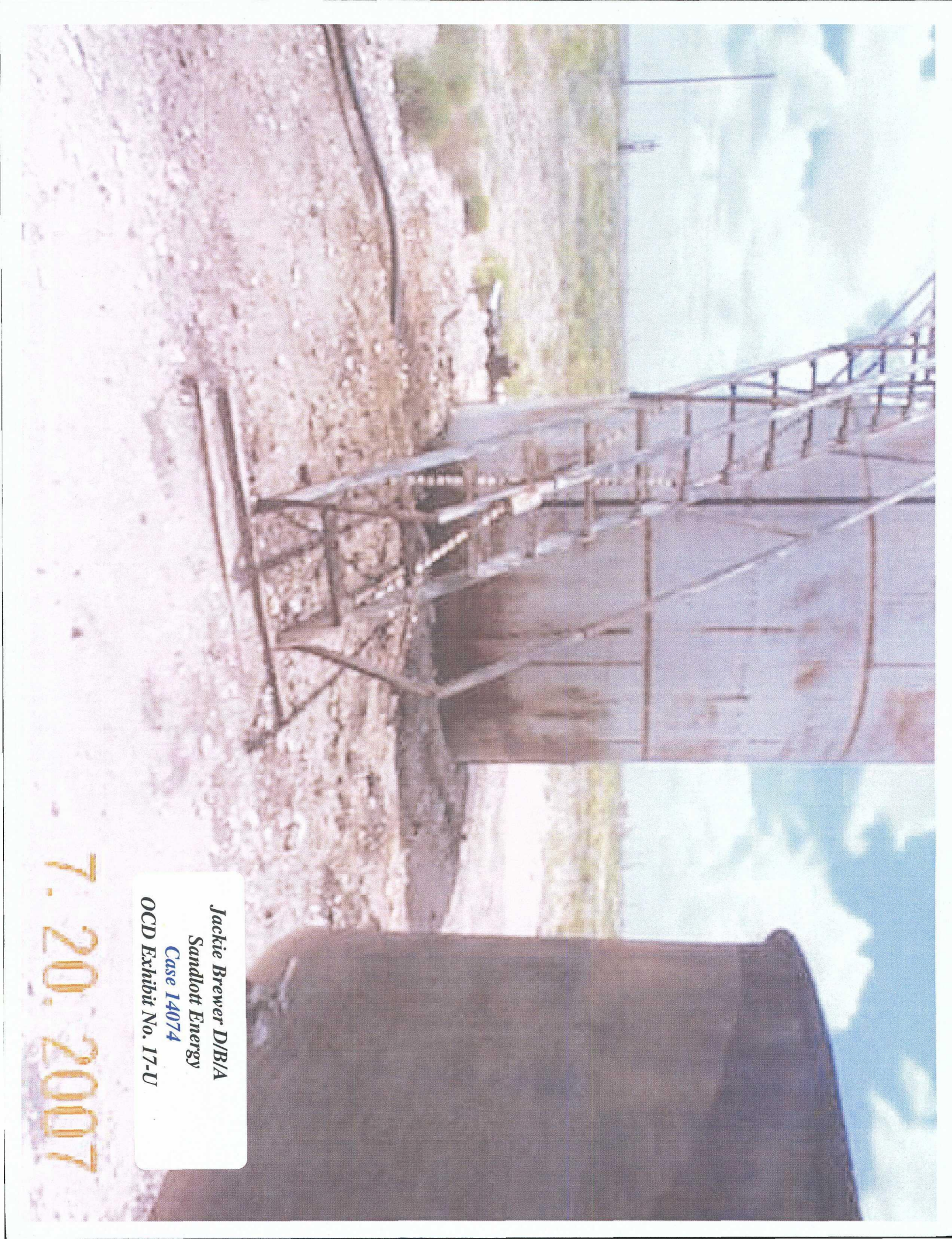
Jackie Brewer D/B/A
Sandlott Energy
Case 14074
OCD Exhibit No. 17-S

7:20.2007

A photograph of an oil pumpjack in a desert landscape. The pumpjack is a large mechanical device used for extracting oil from a well. It consists of a long horizontal beam supported by a vertical post, with a walking beam and a counterweight. The background shows a dry, rocky desert floor with sparse green shrubs. In the distance, there are two small, square, light-colored structures, possibly water towers or storage tanks. The sky is blue with scattered white clouds. The photograph is oriented horizontally on the page.

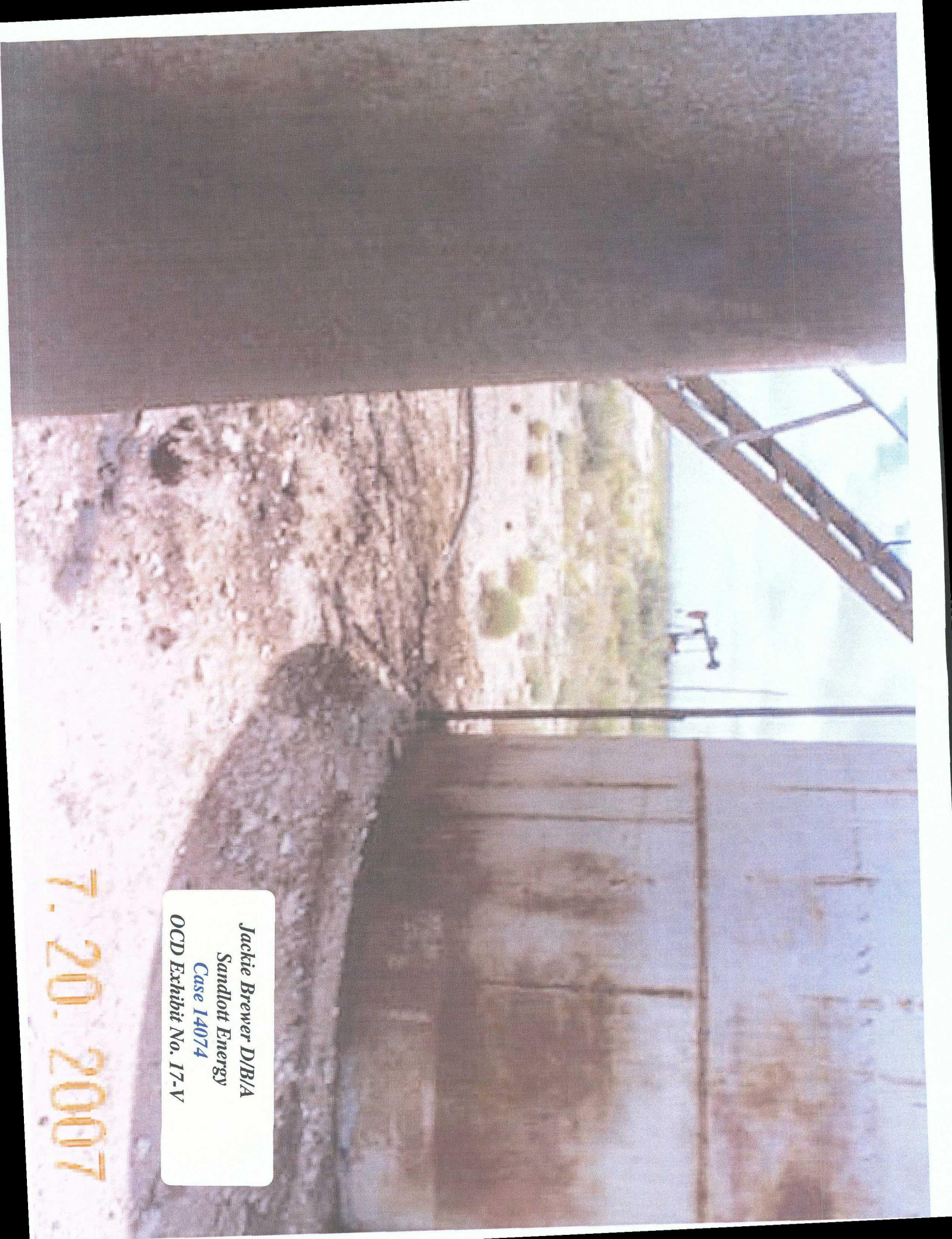
Jackie Brewer D/B/A
Sandlott Energy
Case 14074
OCD Exhibit No. 17-T

7.20.2007



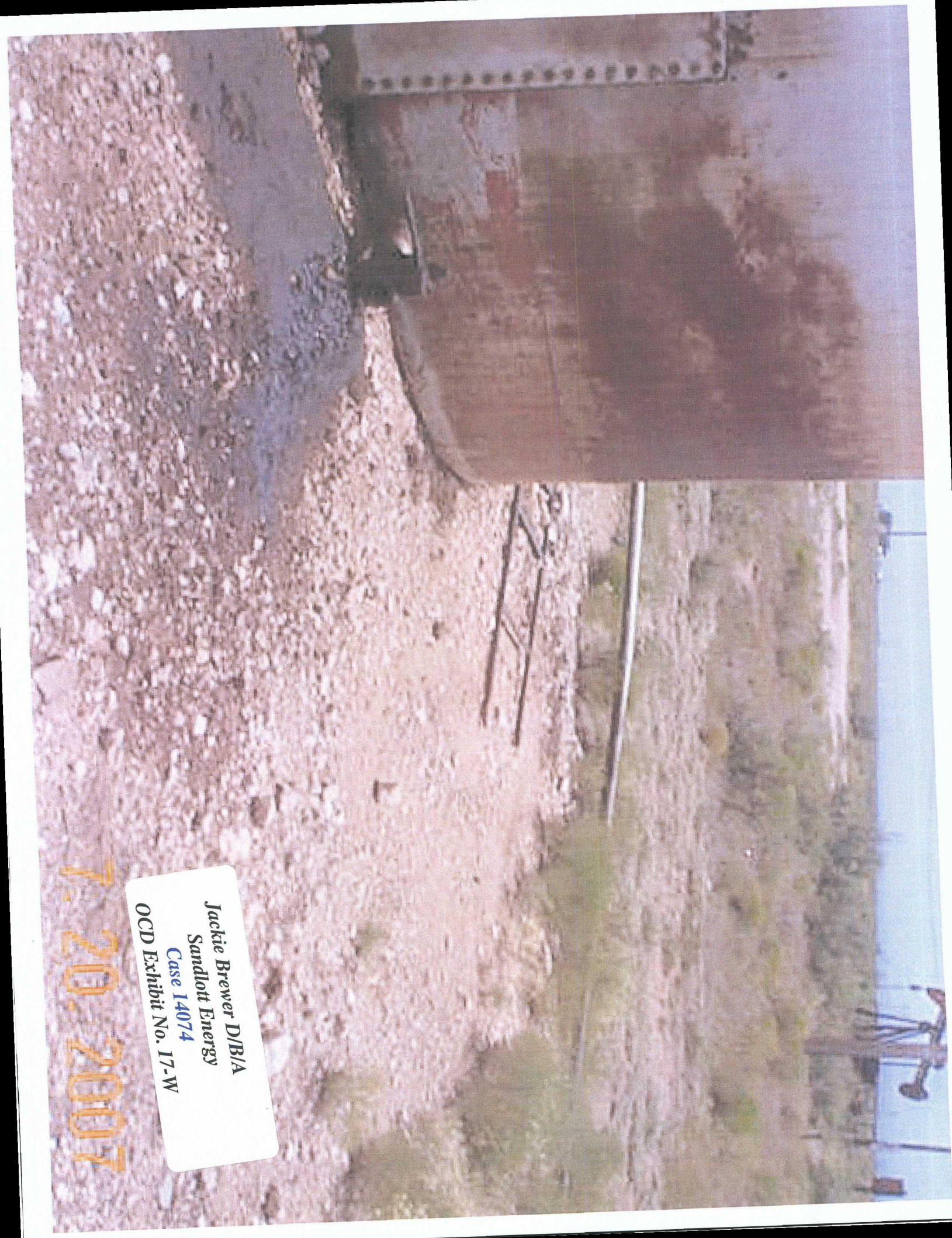
Jackie Brewer D/B/A
Sandlott Energy
Case 14074
OCD Exhibit No. 17-U

7.20.2007



Jackie Brewer D/B/A
Sandlott Energy
Case 14074
OCD Exhibit No. 17-V

7.20.2007



Jackie Brewer D/B/A
Sandlott Energy
Case 14074
OCD Exhibit No. 17-W

7-20-2007