

# STATE LAND OFFICE DATA ACCESS

[Home](#)

Select a different page.....

[Go Tech](#)

[NM State Land and Office](#)

## list lease info

\* Lease Prefix:  \* Number:  \* Assignment:

Example: A0 1234 0000

438 Records found.

Lease Number:

### M0-0651-0011

Company name: INTREPID MINING NM LLC  
 Company ID: 226950  
 Assigned from: N/A  
 Total acres: 17486.05  
 Prod stat: N/A

**Lease term:**

Lease term: Unknown  
 Issue date: 12/14/1936  
 Termination date: Active  
 Termination reason: N/A  
 Current term: Unknown

**Billing information:**

Bill to: INTREPID MINING NM LLC  
 Rent per acre: 0.10  
 Billing frequency: Annual  
 Minimum annual rent: 1748.61  
 Last bill date: 11/15/2007  
 Next bill date: 12/14/2008  
 Escalation: 0

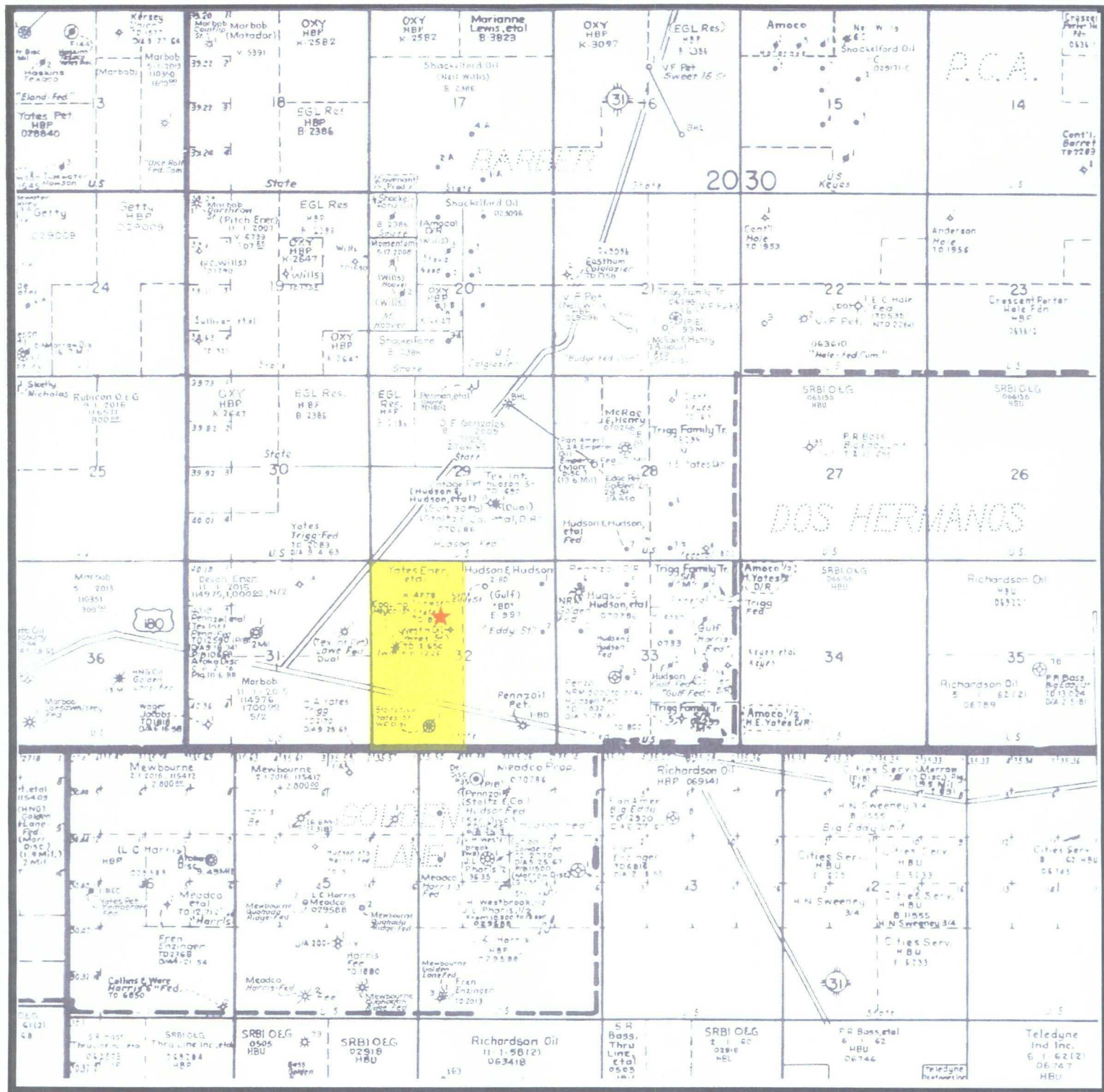
**Land information:**

Section	Township	Range	Unit Letter	Lot	Tract	Acreage	Link
29	20S	30E	A			40.00	[Land Details]
			B			40.00	[Land Details]
			C			40.00	[Land Details]
			D			40.00	[Land Details]
			E			40.00	[Land Details]
			F			40.00	[Land Details]
			G			40.00	[Land Details]
			H			40.00	[Land Details]

Oil Conservation Division  
 Case No. 3  
 Exhibit No. 3

30	20S	30E	1	1	39.73	[Land Details]
			2	2	39.82	[Land Details]
			A		40.00	[Land Details]
			B		40.00	[Land Details]
			C		40.00	[Land Details]
			F		40.00	[Land Details]
			G		40.00	[Land Details]
			H		40.00	[Land Details]
32	20S	30E	A		40.00	[Land Details]
			B		40.00	[Land Details]
			C		40.00	[Land Details]
			D		40.00	[Land Details]
			E		40.00	[Land Details]
			F		40.00	[Land Details]
			G		40.00	[Land Details]
			H		40.00	[Land Details]
			I		40.00	[Land Details]
			J		40.00	[Land Details]
			K		40.00	[Land Details]
			L		40.00	[Land Details]
			M		40.00	[Land Details]
			N		40.00	[Land Details]
			O		40.00	[Land Details]
			P		40.00	[Land Details]
36	20S	30E	A		40.00	[Land Details]
			B		40.00	[Land Details]
			E		40.00	[Land Details]
			F		40.00	[Land Details]
			G		40.00	[Land Details]
			H		40.00	[Land Details]
			I		40.00	[Land Details]
			J		40.00	[Land Details]
			K		40.00	[Land Details]
			L		40.00	[Land Details]
			M		40.00	[Land Details]
			N		40.00	[Land Details]
			O		40.00	[Land Details]
			P		40.00	[Land Details]
16	20S	31E	A		40.00	[Land Details]
			B		40.00	[Land Details]
			C		40.00	[Land Details]
			D		40.00	[Land Details]
			E		40.00	[Land Details]
			F		40.00	[Land Details]
			G		40.00	[Land Details]
			H		40.00	[Land Details]
			I		40.00	[Land Details]
			J		40.00	[Land Details]
			K		40.00	[Land Details]
			L		40.00	[Land Details]
			M		40.00	[Land Details]
			N		40.00	[Land Details]
			O		40.00	[Land Details]
			P		40.00	[Land Details]
32	20S	31E	A		40.00	[Land Details]
			B		40.00	[Land Details]
			C		40.00	[Land Details]
			D		40.00	[Land Details]

			E		40.00	[Land Details]
			F		40.00	[Land Details]
			G		40.00	[Land Details]
			H		40.00	[Land Details]
			I		40.00	[Land Details]
			J		40.00	[Land Details]
			K		40.00	[Land Details]
			L		40.00	[Land Details]
			M		40.00	[Land Details]
			N		40.00	[Land Details]
			O		40.00	[Land Details]
			P		40.00	[Land Details]
36	20S	31E	A		40.00	[Land Details]
			B		40.00	[Land Details]
			C		40.00	[Land Details]
			D		40.00	[Land Details]
			E		40.00	[Land Details]
			F		40.00	[Land Details]
			G		40.00	[Land Details]
			H		40.00	[Land Details]
			I		40.00	[Land Details]
			J		40.00	[Land Details]
			K		40.00	[Land Details]
			L		40.00	[Land Details]
			M		40.00	[Land Details]
			N		40.00	[Land Details]
			O		40.00	[Land Details]
			P		40.00	[Land Details]
12	20S	32E	I		40.00	[Land Details]
			J		40.00	[Land Details]
			O		40.00	[Land Details]
			P		40.00	[Land Details]
13	20S	32E	A		40.00	[Land Details]
			B		40.00	[Land Details]
			C		40.00	[Land Details]
			D		40.00	[Land Details]
			E		40.00	[Land Details]
			F		40.00	[Land Details]
			G		40.00	[Land Details]
			H		40.00	[Land Details]
			I		40.00	[Land Details]
			J		40.00	[Land Details]
			K		40.00	[Land Details]
			L		40.00	[Land Details]
			M		40.00	[Land Details]
			N		40.00	[Land Details]
			O		40.00	[Land Details]
			P		40.00	[Land Details]
18	20S	33E	3	3	39.98	[Land Details]
			K		40.00	[Land Details]
2	21S	29E	1	1	35.33	[Land Details]
			10	10	40.00	[Land Details]
			11	11	40.00	[Land Details]
			12	12	40.00	[Land Details]
			13	13	40.00	[Land Details]
			14	14	40.00	[Land Details]
			15	15	40.00	[Land Details]
			16	16	40.00	[Land Details]



Oil Conservation Division  
 Case No. \_\_\_\_\_  
 Exhibit No. 1

NADEL AND GUSSMAN HEYCO LLC

**Golden Lane Prospect**  
**Heyco State #2**  
 Sec. 32 T20S-R30E

Eddy Co., NM

SHG