

Prepared By:



United States Department of the Interior
Bureau of Land Management



United States Department of Agriculture
Forest Service

Fourth Edition
Revised 2007

NMOCD Case Nos. 14134 and 14141
June 20, 2008
Approach Operating LLC
Ex. No. 11

Chapter 4 – Construction and Maintenance



This chapter provides guidance for the operator about the basic requirements for safe and environmentally sound construction and maintenance of oil and gas-related infrastructure. Construction and maintenance must be performed to standards that ensure the long-term health and productivity of the land. The operator's representative must ensure compliance with all plans and designs. The representative should be designated prior to construction; be accessible to the surface

management agency authorized officer; have immediate access to an approved copy of the Application for Permit to Drill (APD), including all maps, drawings, templates, and construction standards; and have the authority to make changes at the request or order of the BLM or surface management agency.

Well Sites

Site Selection and Design

To the extent permitted by the geologic target, well spacing, and drilling and production technology, the locations selected for well sites, tank batteries, pits, and compressor stations should be planned so as to minimize long-term disruption of the surface resources and existing uses, and to promote successful reclamation. Design and construction techniques and other practices should be employed that would minimize surface disturbance and the associated effects of proposed operations and maintain the reclamation potential of the site. The following guidelines can be used to assist in meeting these objectives and reducing the overall undesirable impacts from well sites and other construction areas.

Well sites should be designed to fit the landscape and minimize construction needs. In many cases, this

means designing a well site that has an irregular shape, not rectangular. The site layout should be located and staked in the most level area, off narrow ridges, and set back from steep slopes, while taking into consideration the geologic target, technical, economic, and operational feasibility, spacing rules, natural resource concerns, and safety considerations. Well locations constructed on steep slopes cost more to construct, maintain, and reclaim and result in greater resource impacts. Locations on steep slopes that require deep, nearly vertical cuts and steep fill slopes should be avoided where possible or appropriately mitigated. Operations should also be avoided or properly mitigated in riparian areas, floodplains, playas, lakeshores, wetlands, and areas subject to severe erosion and mass soil movement. In visually sensitive areas, locations should be selected that provide for vegetative and topographic screening. The well site or production facility location should also be reviewed to determine its effect on the location of the access road. The advantages gained by a good well site or tank battery location should not be negated by the adverse effects of the access road location.

Construction

Construction procedures must conform to the approved Surface Use Plan of Operations. In order to minimize surface disturbance, construction equipment appropriately sized to the scope and scale of the proposed operation should be used. All surface soil materials (topsoil) are to be removed from the entire cut and fill area and temporarily stockpiled for reuse during interim reclamation or final reclamation if the well is a dry hole. The depth of topsoil to be removed and stockpiled should be determined at the onsite inspection and should be stated either in the proposed Surface Use Plan of Operations or specified in the APD conditions of approval.

Topsoil should be segregated and stored separately from subsurface materials to avoid mixing during construction, storage, and interim reclamation. Subsurface materials should never be placed on top of topsoil material at any point in the operation. Stockpiles should be located and protected so that wind and water erosion are minimized and reclamation potential is maximized.

Excavation of the cut and fill slopes is normally guided by information on the slope stakes. Fills should be compacted to minimize the chance of subsidence or slope failure. If excess cut material exists after fill areas have been brought to grade, the excess material will be stockpiled at approved locations. Snow and frozen soil material is not to be used in construction of fill areas, dikes, or berms. To reduce areas of soil disturbance, the surface management agency may allow mowing or brush beating of vegetation for parts of the well location or access road where excavation is not necessary.

The area of the well pad where the drilling rig substructure is located should be level and

capable of supporting the rig. The drill rig, tanks, heater-treater, and other production equipment are not to be placed on uncompacted fill material. The area used for mud tanks, generators, mud storage, and fuel tanks should be at a slight slope, where possible, or a suitable alternative, such as ditching, should be used to provide surface drainage from the work area to the pit.

To reduce erosion and soil loss, it may be appropriate to divert storm water away from the well location with ditches, berms, or waterbars above the cut slopes and to trap well location runoff and sediments on or near the location through the use of sediment fences or water retention ponds.

Reserve Pits

Reserve pits are generally used for storage or disposal of water, drill mud, and cuttings during drilling operations. The pit should normally be located entirely in cut material. Avoid constructing reserve pits in areas of shallow groundwater. Reserve pits should not be constructed in natural watercourses. Water courses include lake beds, gullies, draws, streambeds, washes, arroyos, or channels that are delineated on a 1:24,000 USGS quadrangle map or have a hydrologic connection to streams, rivers, or lakes.

For reserve pit construction on sloping sites, the preferred method is to locate the pit on the drill pad next to the high wall. Pits are constructed totally in cut at such locations. If this is not possible, at least 50 percent of the reserve pit should be constructed below original ground level to help prevent failure of the pit dike. Fill dikes should be properly compacted in lifts. The necessary degree of compaction depends on soil texture and moisture content. The pit should

be designed to contain all anticipated drilling muds, cuttings, fracture fluids, and precipitation while maintaining at least 2 feet of freeboard.

Pits improperly constructed on slopes or poor soil types may leak along the plane between the natural ground level and the fill. There is a significant potential for pit failure in these situations. When constructing dikes for pits or impoundments with fill embankment, a keyway or core trench should be excavated to a minimum depth of 2 to 3 feet below the original ground level. The core of the embankment can then be constructed with compacted, water-impervius material.

To prevent contamination of ground water and soils or to conserve water, it is recommended that operators use a closed-loop drilling system or line reserve pits with an impermeable liner, particularly when it is anticipated that pits will contain moderate or high levels of hydrocarbons and chloride, or the pits are located in areas of shallow groundwater or porous soils over fractured bedrock aquifers.

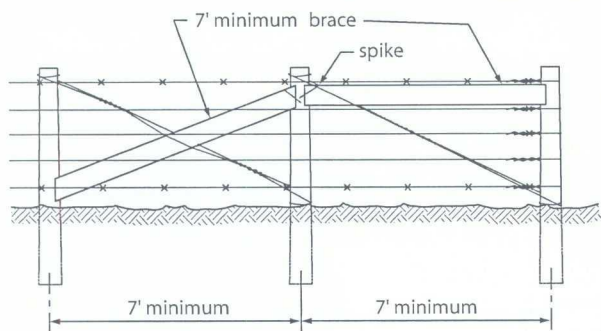
Pits can be lined with synthetic liners or other materials such as bentonite or clay. Impermeable liners should have a permeability of less than 10^{-7} cm/sec. Liners must be installed so that they will not leak and must be composed of materials compatible with all substances to be placed in the pit. Synthetic liners with a minimum thickness of 12 mils and resistance to ultraviolet radiation,

weathering, chemicals, punctures, and tearing are most commonly used, although some States may require liners that are thicker. Suitable bedding material, such as sand, clay, or felt liners should be used in areas where the base rock might puncture the liner.

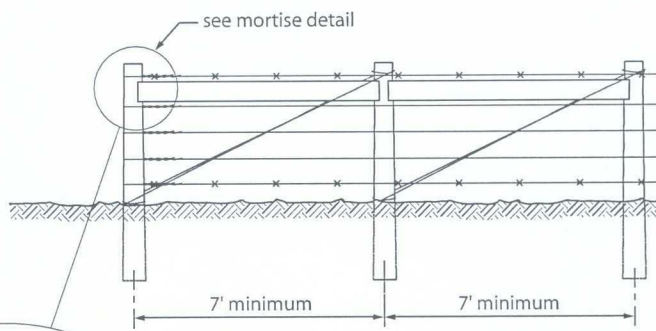
Depending on the proposed contents of the pit and sensitivity of the environment, the surface management agency may require a leak detection system or the use of self-contained mud systems with the drilling fluids, mud, and cuttings being transported to approved disposal areas.

Reserve pits should be appropriately fenced to prevent access by persons, wildlife, or livestock. During drilling in active livestock areas, the reserve pit must be fenced with an exclosure fence on three sides and then fenced on the fourth side once drilling has been completed. Refer to Figure 1 for recommended fence construction standards in active livestock areas. In areas where livestock will not be present, other types of fences may be appropriate.

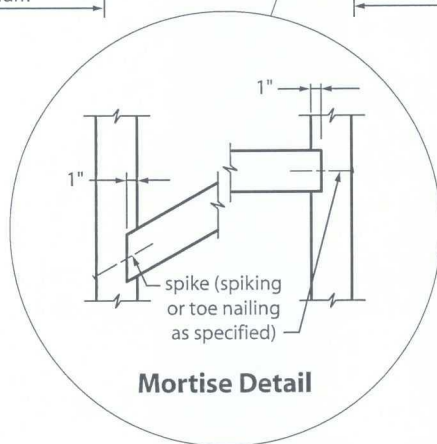
The fence should remain in place until pit reclamation begins. After cessation of drilling and completion operations, any visible or measurable layer of oil must be removed from the surface of the reserve pit and the pit kept free of oil. In some situations and locations, precautions, such as netting, may be required in order to prevent access and mortality of birds and other animals.



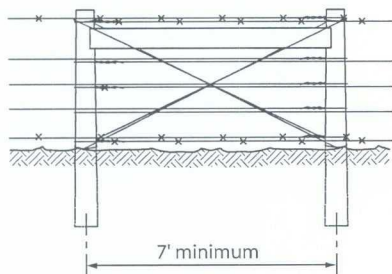
End Panel-Type 1



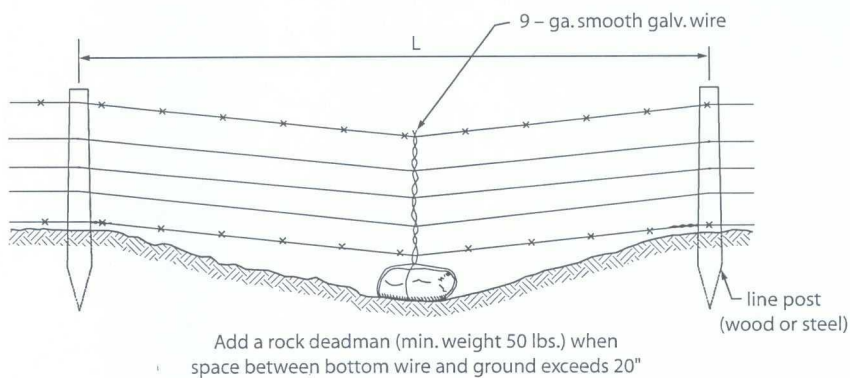
End Panel-Type 2



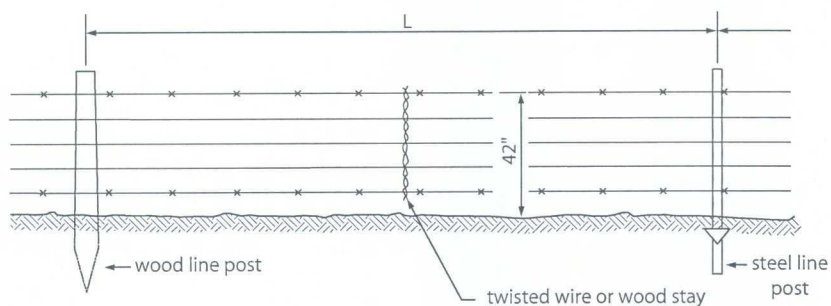
Mortise Detail



Stress Panel



Panel at Minor Depression



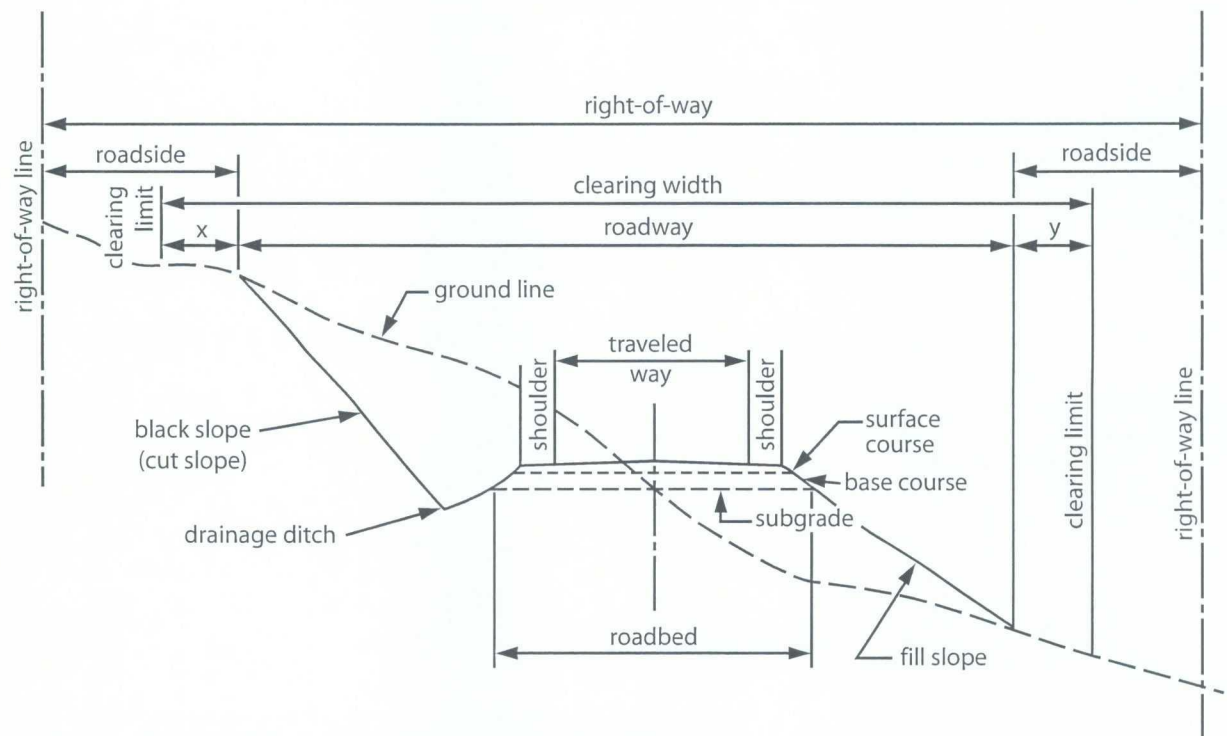
Line Panels

Figure 1. Recommended construction standards for enclosure fences in livestock areas.

Roads and Access Ways

This section provides the minimum guidelines for oil and gas operators on BLM and FS policy and standards relative to the planning, location, design, construction, maintenance, and operation of roads and access ways on public and National Forest

System lands. Contact the local BLM or FS office for specific requirements. Exception to or modification of these guidelines is at the surface management agency's discretion based on the physical conditions at the site and the project proposal. Figure 2 illustrates commonly used terms in road design and should be referred to when reviewing this section.



Note: Shapes and dimensions will vary to fit local conditions
See drawings for typical sections
x and y denote clearing outside of roadway

Figure 2. Illustration of commonly used terms in road design

To ensure public safety and the protection of Federal resources, BLM and FS roads must be constructed to an appropriate standard no higher than necessary to accommodate the intended use. In many cases, the construction of a lower-class road will meet the operator's access needs, while minimizing the effects on other important resource values.

Roads used to access oil and gas locations are typically constructed for that primary purpose, are rarely permanent, and exist only as long as necessary to complete exploration and production operations. They are authorized with an accompanying

reclamation plan and are to be reclaimed after well and field operations are completed. In relatively rare cases, the surface management agency or surface owner may assume responsibility for the continued operation and maintenance of roads deemed necessary.

The authorized officer has the option of determining whether professional engineering design and construction oversight is necessary or whether the road can be constructed by the operator consistent with site-specific standards and approved road design templates (Figures 2 and 3). The need for professional engineering design and oversight should be based on factors such as topography,

Construction Steps

1. Salvage topsoil
2. Construct road

3. Redistribute topsoil
4. Revegetate slopes

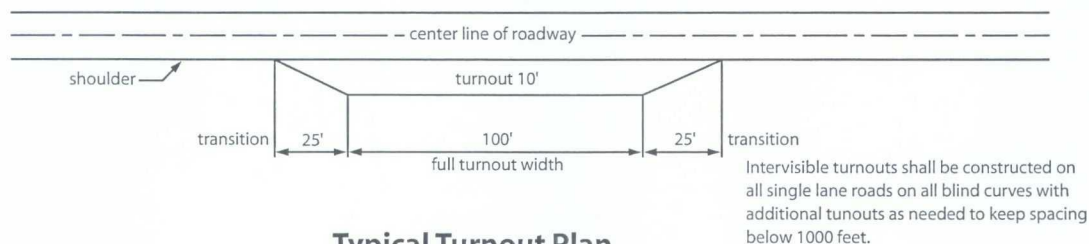
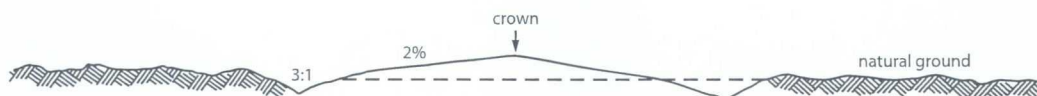
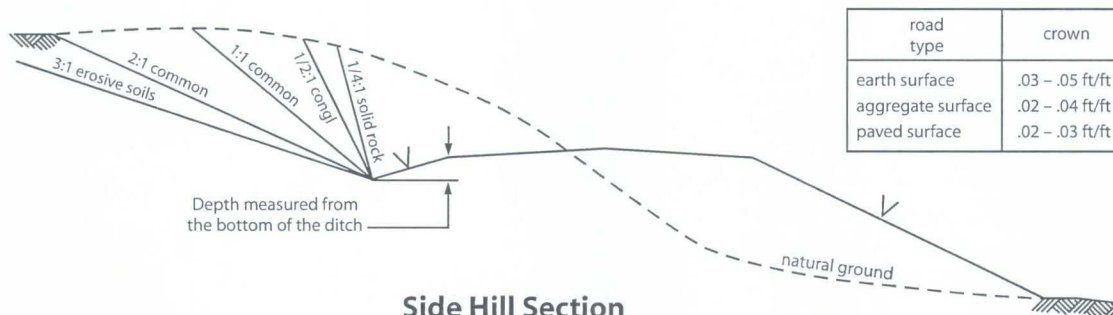
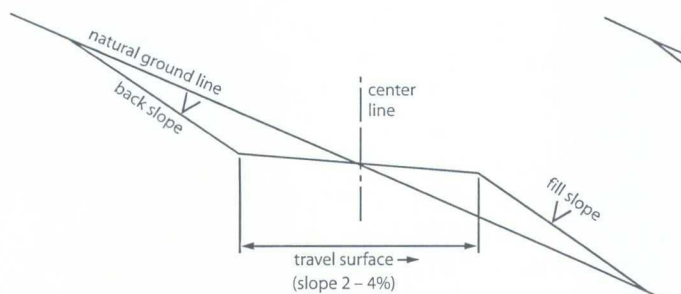
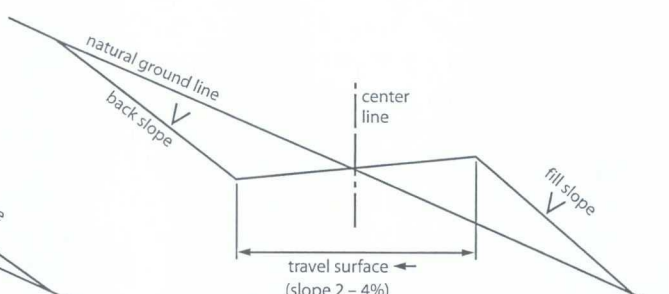
**Typical Turnout Plan****Level Ground Section****Side Hill Section****Typical Outsloped Section****Typical Insloped Section**

Figure 3. Cross-sections and plans for typical road sections representative of BLM resource or FS local and higher-class roads.

soils, hydrology, safety, and levels and types of use by the operator and general public. For oil and gas roads on National Forest System lands, a qualified FS engineer reviews all project design drawings, officially attesting to their technical adequacy.

To meet the requirements of Onshore Order No. 1 (Surface Use Plan of Operations, 2a and b) for new or reconstructed roads, the operator must provide information such as:

- Road width, maximum grade, and crown design
- Location of turnouts
- Plans for soils-, hydrology-, and topography-dependent drainage, including ditches and locations and sizes of culverts and bridges
- On- and off-site erosion control
- Plans for revegetation of disturbed areas
- Fence cuts and cattle guards
- Major cuts and fills
- Source and storage sites for topsoil
- Types of surfacing materials, if any
- Plans for maintaining or improving existing roads

All roads must be designed, constructed, and maintained by the operator in a safe and environmentally responsible manner. Oil and gas roads that are not closed to public use (through the use of gates or other traffic control devices) have the potential to serve secondary uses, such as providing access for hunters and other recreational users who may not be familiar with the road and area. Therefore, safety is a primary design consideration.

Roads also have the potential to cause environmental harm through erosion, air pollution, stream degradation, habitat alteration, and increased public use of an area. Careful attention to the proposed road location and design can significantly minimize environmental harm. For example, shorter roads constructed on steep slopes may cost more to construct, maintain, and reclaim and can also result in greater environmental impacts than would longer roads constructed along the contours of the land or constructed in flatter terrain. In areas of high environmental sensitivity, special road location, design, and construction and

maintenance techniques may be required, as well as seasonal vehicular closures to the general public.

It is always a good practice to consult with the surface management agency or private landowner prior to submitting the road design. Helpful design information can also be found on agency websites. For the BLM, guidance can be found in BLM 9113—Roads Manual; and BLM 9130—Sign Manual. For the FS, information is available in EM-7100-15: Sign and Poster Guidelines for the FS or the FS Water/Road Interaction Series of publications.

Transportation Planning

The goal of transportation planning is to identify and analyze feasible alternatives for access that meet the objectives of the surface management agency, private surface owner, and the needs of the diverse users of Federal lands. The transportation planning process:

- Considers future road use needs, including public access and resource development or use
- Considers affected resource values and safety
- Avoids haphazard or unnecessary development of roads and utility corridors

Road location and design criteria are also developed and documented during the transportation planning process. Transportation planning can prevent unnecessary expenditures of time and money and prevent unnecessary surface disturbance. Therefore, it is important for the operator to become involved in the transportation planning process.

Road Location

Road location is critical to the long-term maintenance and environmental success of a road construction project. Proper road location can significantly reduce or eliminate impacts to cultural, scenic, biological, and other environmental resources. Operators are strongly encouraged to contact the surface management agency or private surface owner about possible route locations before surveying and staking. This early communication between the operator and the surface management agency or private surface owner can minimize changes made at the onsite inspection and reduce project delays.

Existing roads should be considered for use as access routes and may be used when they meet agency standards, transportation and development needs, and environmental objectives. When access involves the use of existing agency roads, operators must obtain agency approval and may be required to upgrade the roads, contribute to road maintenance funds, or participate in road maintenance agreements.

When selecting a location for new roads, consider following topographic contours. While laying out roads in a point-to-point approach minimizes the length of road, it often increases soil erosion, maintenance costs, long-term loss of vegetation, and visual contrast. Following natural topographic contours preserves natural drainage patterns and usually makes it possible to design a more aesthetically pleasing road with lower construction, maintenance, and reclamation costs and less impact on the environment.

Initial steps in road location include:

- Determination of the intended use of the road, planned season of use, type of vehicles to be used, road class, and needs of the surface owner or agency
- Examination of the surface management agency's transportation plan, which may already have identified feasible routes for the area
- Examination of existing data, including maps and aerial photos, land use plan decisions, and biological, physical, and cultural conditions of the area
- Determination of oil and gas lease obligations, future development needs, and safety considerations.

Once these steps have been taken, an appropriate route can be identified. This process is critical to ensuring that the safest and least intrusive route is chosen.

Geotechnical Factors

In complex terrain or conditions, it is recommended that the operator look at various route alternatives before selecting the preferred route. Field reconnaissance of alternative routes may be necessary in order to provide information on such factors as soil types, construction/reclamation

limitations, type of excavation, landslide areas, subgrade conditions indicating the need for surfacing, potential cut slope problems, surface or subsurface water problem areas, suitability of fill material, potential gravel pits or quarries for road aggregate, and potential borrow and waste sites. A good road location analysis may avoid costly problems and identify cost-saving opportunities.

Other Factors

Other factors to consider that are unique to the oil and gas industry include:

- The potential for encountering sour gas (H₂S). Note the prevailing wind direction and identify a clear escape route from the drill site.
- The potential for year-round operation. Drill sites and producing locations may require all-weather access and special maintenance considerations for snow removal.
- The potential for exploratory drilling to result in a producing operation. Select initial road alignments and road classes based on the potential for upgrade if the wells are completed for production.

When the road location information is submitted to the surface management agency, the acceptability of the proposed route, and if applicable, alternative routes, can be evaluated. The preferred road location will be identified by the authorized officer at the onsite inspection in coordination with the private surface owner on non-Federal surface.

Road Design and Construction

Construction and Reclamation Considerations

New road construction or reconstruction by the operator must be suitable for the intended use and must comply with BLM road and safety standards, such as those found in BLM's 9113-Roads Manual. Roads constructed within the jurisdiction of the FS must comply with applicable FS road and safety standards.

Roads should be designed and constructed to allow for successful interim and eventual final

reclamation. Revegetation of road ditches and cut and fill slopes will help stabilize exposed soils and reduce sediment loss, reduce the growth of noxious weeds, reduce maintenance costs, maintain scenic quality and forage, and protect habitat. To ensure successful growth of plants and forbs, topsoil must be salvaged where available during road construction and respread to the greatest degree practical on cut slopes, fill slopes, and borrow ditches prior to seeding. To ensure the stability of freshly topsoiled slopes during revegetation, the application of mulch or other sediment control measures may be appropriate.

Construction with saturated or frozen soils results in unstable roads and should be avoided. Vehicular travel under wet conditions can produce significant rutting of unsurfaced roads resulting in soil loss and safety concerns. If road use is anticipated during saturated soil conditions, the surface management agency may require road surfacing to provide safe vehicle access, ensure uninterrupted operations, and reduce road damage and sediment loss.

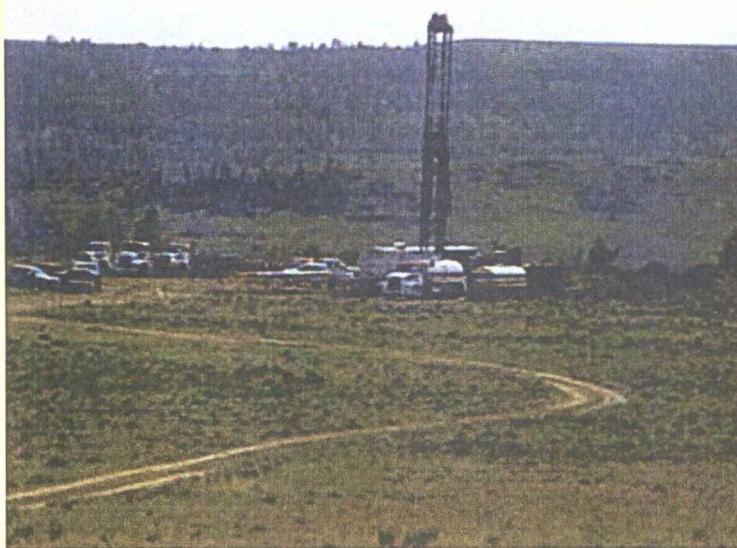
Nonconstructed Roads and Routes

When site conditions are appropriate, the surface management agency may approve the creation or use of "primitive," two-track roads or overland route corridors to meet the operator's access needs. Primitive roads and route corridors

may serve as appropriate access to exploration drilling locations where it is not certain if the well will be productive, or to producing wells where vehicle traffic is infrequent due to the use of off-site production facilities and automated well monitoring.

The appropriateness of primitive roads or routes is both site-specific and use-specific and is typically based on many factors, such as anticipated dry or frozen soil conditions, seasonal weather conditions, flat terrain, low anticipated traffic, or driller's or operator's access needs. Primitive roads or routes necessitate low vehicle speed and are typically limited to four-wheel drive or high clearance vehicles. They can consist of existing or new roads with minor or moderate grading; two-track roads created by the operator's direct vehicle use with little or no grading; overland routes within a defined travel corridor leaving no defined roadway beyond crushed vegetation; or any combination along the route. Operators should not flat-blade roads. Drainage must be maintained, where appropriate, to avoid erosion or the creation of a muddy, braided road.

These roads and routes must be used and maintained in a safe and environmentally responsible manner and are not intended for use as all-weather access roads. Resource damage must be repaired as soon as possible and the operator must consult with the surface management agency



A minimum disturbance, primitive, two-track road winds its way to a drilling operation. To further reduce disturbance, most of the well location has not been stripped of vegetation or topsoil.

to determine if all or a portion of the road needs to be upgraded to an all-weather access road. When used and maintained appropriately, nonconstructed roads and routes have the advantage of reducing construction, maintenance, and reclamation costs and reducing resource impacts. The use of nonconstructed roads must be approved by the surface management agency.

Constructed Roads

The surface management agency determines the appropriate road type and associated road design standards based on the expected traffic volume and other factors, such as seasonal or year-round use, the design vehicle, soil types, rainfall, topography, construction costs, compatibility with other resource values, and safety. This information is documented during the transportation planning process and onsite meeting. Road types may vary along the same route depending on the operator's or the surface management agency's access or resource protection needs. In some cases, exploration drilling may warrant a lower design standard or primitive road, mentioned previously, which could be upgraded if the well becomes a producing well.

BLM Resource or FS Local Roads

BLM resource or FS local roads are low-volume, single-lane roads. They normally have a 12 to 14 foot travelway with "intervisible turnouts," as appropriate, where approaching drivers have

a clear view of the section of road between the two turnouts and can pull off to the side to let the approaching driver pass. They are usually used for dry weather, but may be surfaced, drained, and maintained for all-weather use. These roads connect terminal facilities, such as a well site, to collector, local, arterial, or other higher-class roads. They serve low average daily traffic (ADT) and are located on the basis of the specific resource activity need rather than travel efficiency.

BLM Local or FS Collector Roads

BLM local or FS collector roads may be single-lane or double-lane with travelways 12 to 24 feet in width and intervisible turnouts. They are normally graded, drained, and surfaced and are capable of carrying highway loads. These roads provide access to large areas and for various uses. They collect traffic from resource or local roads or terminal facilities and are connected to arterial roads or public highways. The location and standards for these roads are based on both long-term resource needs and travel efficiency. They may be operated for either constant or intermittent service, depending on land use and resource management objectives for the area being served.

BLM Collector or FS Arterial Roads

BLM collector or FS arterial roads are usually double-lane, graded, drained and surfaced, with a 20 to 24 foot travelway. They serve large land areas and are the major access route into development areas

General Design Specifications for Different Types of Roads

Definitions

Design Criteria are requirements that govern the selection of elements and standards for a road, such as resource management objectives, road management objectives, safety requirements, and traffic characteristics.

Design Elements are the physical characteristics of a road, such as the ditches, culverts, travelway clearing limits, curve widening, slopes, and drainage characteristics that, when combined, comprise the planned facility.

Design Standards comprise the lengths, widths, and depths of design elements, such as a 14-foot-wide travelway, 2-foot shoulders, 2:1 cut slopes, 3-foot curve widening, and 6 inches of crushed aggregate. Design terms are illustrated in Figure 2.

Design Vehicle is the vehicle most frequently using the road that determines the minimum standard for a particular design element. No single vehicle, however, controls the standards for all the design elements for a road.

with high average daily traffic rates. The locations and standards are often determined by a demand for maximum mobility and travel efficiency rather than a specific resource management service. They usually connect with public highways or other arterials to form an integrated network of primary travel routes and are operated for long-term land and resource management purposes and constant service.

BLM Resource and FS Local Roads

Basic Design Requirements

The surface management agency will provide requirements specific to proposed oil and gas roads during project planning and/or at the onsite review with consideration of safety, impacts on land and resources, and cost of transportation. Requirements for specific proposals may vary somewhat from the generalized requirements that follow.

- Design speed specific to oil and gas roads is 10 to 30 miles per hour. For the FS, this should generally be less than 15 miles per hour.
- Preferred travelway width is 14 feet with turnouts. For the FS, this can vary from two parallel vehicle tracks, bladed 12-foot sections with turnouts, or a broader defined overland corridor approved by the surface management agency.
- Recommended minimum horizontal curve radii is determined by the design vehicle and design speed. Where terrain will not allow the proper curve radii, curve widening is necessary. Specifications are available from the surface management agency.
- Road gradient has a major effect on the environmental and visual impact of a road, particularly in terms of erosion. The gradient should fit as closely as possible to the natural terrain, considering vehicle operational limitations, soil types, environmental constraints, and traffic service levels. The gradient should not exceed 8 percent except for pitch grades (300 feet or less in length) in order to minimize environmental effects. In mountainous or dissected terrain, grades greater than 8 percent up to 16 percent may be permissible with prior approval of the surface management agency.
- The primary purpose of turnouts is for user convenience and safety and to maintain user

speed. Turnouts are generally naturally occurring, such as additional widths on ridges or other available areas on flat terrain. On roads open to the public, turnouts must be located at 1,000-foot intervals or be intervisible, whichever is less.

- Drainage control must be ensured over the entire road through the use of drainage dips, insloping, natural rolling topography, ditch turnouts, ditches, or culverts. Ditches and culverts may be required in some situations, depending on grades, soils, and local hydrology. If culverts or drainage crossings are needed, they should be designed for a 25-year or greater storm frequency, without development of a static head at the pipe inlet.
- Gravel or other surfacing is not always required, but may be necessary for "soft" road sections, steep grades, highly erosive soils, clay soils, or where all-weather access is needed.
- At times, a limited number of oil field vehicles (critical vehicles) larger than the design vehicle may make occasional use of the road. The operator should consider these needs in road design.

Field Survey Requirements

Field survey requirements vary with topography, geologic hazard, potential for public and recreational use, or other concerns. Each surface management agency has survey requirements based on design requirements and concerns specific to the area. The surface management agency should be contacted as early as possible to determine the survey requirements. The following general requirements are imposed to control work and produce the desired road.

- A flagline is established along the construction route. Flags should be placed approximately every 100 feet, or be intervisible, whichever is less.
- Construction control staking may be required depending on conditions of the site.
- Culvert installations are located and staked.

Design Drawings and Templates

- On side slopes of 0 to 20 percent, where horizontal and vertical alignment can be worked out on the ground, a plan and profile drawing may not be required. Standard templates, drainage dip spacing,

culvert locations, and turnout spacing guides would be acceptable.

- A plan and profile view would be the minimum drawing required on steeper slopes and in areas of environmental concern. The drawing should identify grade, alignment, stationing, turnouts, and culvert locations.
- Standard templates of road cross-sections and drainage dips are required for all resource, local, and higher-class roads. Figures 2 and 3 illustrate these sections.
- Additional information may be required in areas of environmental or engineering concern.

Construction

The operator must take all necessary precautions for protection of the work and safety of the public during construction of the road. Warning signs must be posted during blasting operations.

Clearing and Grubbing

Clearing and grubbing will normally be required on all sections of the road. Exceptions would be allowed in areas of sparse, non-woody vegetation.

All clearing and grubbing should be confined to a specified clearing width (Figure 2), which is usually somewhat wider than the limits of actual construction (roadway). Branches of all trees extending over the roadbed should be trimmed to provide a clear height of 14 feet above the roadbed surface. All vegetative debris must be disposed of as specified by the surface management agency.

Excavation

All soil material and fragmented rock removed in excavation is to be used as directed in the approved plan. Excess cut material shall not be wasted unless specified in the approved plan.

Roadbed Construction

Roadbed material should not be placed when the materials or the surface are frozen or too wet for satisfactory compaction. Equipment should be routed over the layers of roadbed material already in place to help avoid uneven compaction anywhere along the travel route. Borrow material

shall not be used until material from roadway excavation has been placed in the embankments, unless otherwise permitted. Borrow areas used by the operator must be approved prior to the start of excavation.

Roadside ditches should conform to the slope, grade, and shape of the required cross-section with no projections of roots, stumps, rocks, or similar debris. Side ditches must be excavated to a depth of 1-foot minimum below the finished road surface. Drainage turnout spacing on these ditches should not exceed 500 feet; slopes greater than 5 percent may require closer spacing of turnout furrows (wing ditches or relief ditches).

BLM Local and FS Collector Roads

Basic Design Requirements

- Design speed is generally 15 to 50 miles per hour. For the FS, it is 15 to 25 miles per hour. The selected design speed establishes the minimum sight distance for stopping and passing, and road geometrics such as minimum radius of curvature, the gradient, and type of running surface.
- Travelway minimum is 14 feet (single lane) and 24 feet (double lane) with intervisible turnouts, as may be required.
- Recommended minimum horizontal curve radius is 220 feet. Where terrain will not allow 220-foot curve radii, curve widening is necessary. Super-elevation should be considered at speeds greater than 20 miles per hour. Specifications are available from surface management agency engineering offices.
- Vertical curves should be designed with an appropriate "k" value (rate of vertical curvature length per percent of "A", the algebraic difference in grade) based on design speed (for example on FS, crest vertical curves, 30 mph $k=9$; 40 mph $k=22$; 50 mph $k=45$).
- Maximum grades should not exceed 8 percent. Pitch grades for lengths not to exceed 300 feet may be allowed to exceed 8 percent in some cases.
- All culverts must be sized in accordance with accepted engineering practices and any special environmental concerns. The minimum size culvert in any installation is 18 inches. Drainage crossings

and culverts should be designed for a 25-year or greater storm frequency and allow fish passage in perennial streams where fish are present.

- Turnouts are required on all single-lane roads. Turnouts must be located at 1000-foot intervals or be intervisible, whichever is less. The length should not be less than 100 feet, with additional 50-foot transitional tapers at each end.
- Surfacing may be required to provide all-weather access. If surfacing is needed, aggregate size, type, amount, and application method will be specified by the local office of the surface management agency. Subgrade analysis may be required to determine load-bearing capacities.

Field Survey Requirements

Generally, the survey requirements for these roads are similar to those for BLM resource and FS local roads. These roads, however, are designed for higher average daily traffic rates and greater speeds. Thus, in addition to flagline and culvert survey requirements, an instrument or topographic survey with preliminary centerline staking and slope staking is usually required on steep terrain and in areas requiring special engineering. Specific survey requirements are available at the local office of the surface management agency.

Design Drawings and Templates

- Generally, the required drawings for this road class would include a plan and profile (Figure 4). The drawing should identify grade, location, stationing, surfacing, turnouts, culvert locations, and drainage dip spacing.
- Standard templates of the proposed road cross-section(s) (Figures 2 and 3) and drainage dip design are required for this type of road.
- Additional information may be required in areas of environmental or engineering concern.

Construction

- Drainage dips, construction, and spacing are the same as for BLM resource and FS local roads.
- Culvert cross-drains should be used in lieu of drainage dips for road grades in excess of 10 percent. Culvert installation is discussed in the Drainage and Drainage Structure Section.

- Construction standards are the same as given in the BLM Resource and FS Local Roads Section.

BLM Collector and FS Arterial Roads

Basic Survey and Design Requirements

- Vertical, horizontal, and topographic data, as well as significant features should be plotted on standard plan and profile sheets to a scale of 1 inch = 100 feet horizontal and 1 inch = 20 feet vertical, or as otherwise directed by the surface management agency. The design shall conform to the most current edition of the AASHTO, *Guidelines for Geometric Design of Very Low-Volume Local Roads*, for access roads with an anticipated average daily traffic of less than 400 vehicles.
- Plot "L" (layout) line along "P" (preliminary) line using the following design standards criteria:
 - Design speed is 30 miles per hour or greater unless otherwise directed.
 - Travel width-minimum is 20 feet, maximum is 24 feet.
 - Minimum horizontal curve radius is 460 feet unless shorter radii are approved. The curve radius must take into account super-elevation.
 - Design vertical curves with an appropriate "k" value based on design speed.
 - Maximum grade is 8 percent (except pitch grades not exceeding 300 feet in length and 10 percent in grade).
 - Mass diagrams and earthwork balancing may be required. Obvious areas of waste or borrow shall be noted on the plan and profile as well as proposed locations of borrow or waste disposal areas.
 - All culverts should be designed for a minimum 25-year storm frequency with an allowable head that does not overlap the roadway or cause damage. However, the minimum acceptable size culvert diameter is 18 inches. Show all culverts planned to accurate vertical scale on plan profile sheets.
 - Slope staking is required.

Design Drawings and Templates

- Complete plan and profile drawings are required for any BLM collector or FS arterial road (Figure 4). These drawings should identify grade, location, stationing, and all culvert sizes and locations (see Figure 7 for examples).
- Standard templates of road cross-sections, drainage design, and culvert location and installation are required (Examples in Figures 3 through 6).
- Mass diagrams and materials investigation and classification may be required.

Construction

Except for the specific items that follow, construction standards are given in the BLM Resource/FS Roads or the BLM Local/FS Collector Roads Sections. Construction shall be performed under the direction of a licensed, professional engineer as required by the BLM, or a qualified engineer for roads on FS lands.

Excavation and fill construction will be performed to secure the greatest practicable degree of roadbed compaction and stability. Roadbed

materials shall be placed parallel to the axis of the roadway in even, continuous, approximately horizontal layers not more than 8 inches in thickness. The full cross-section of the fill must be maintained as each successive layer is placed. Place successive layers of material on embankment areas to produce the best practical distribution of the material. The materials throughout the roadbed shall be free from lenses, pockets, streaks, or layers of material differing substantially in texture, gradation, or compaction from the surrounding material. Ordinarily, stones coarser than a 3-inch-square mesh opening should be buried at least 4 inches below the finished surface of the roadway.

The operator should route construction equipment over the layers of roadbed material already in place and distribute the gravel evenly over the entire width of the embankment to obtain maximum compaction while placing the material and to avoid uneven compaction anywhere along the travel route.

Use excess excavation material, where practical, to improve the road grade line or to flatten fill slopes. Other waste areas must be approved prior to placement of waste material.

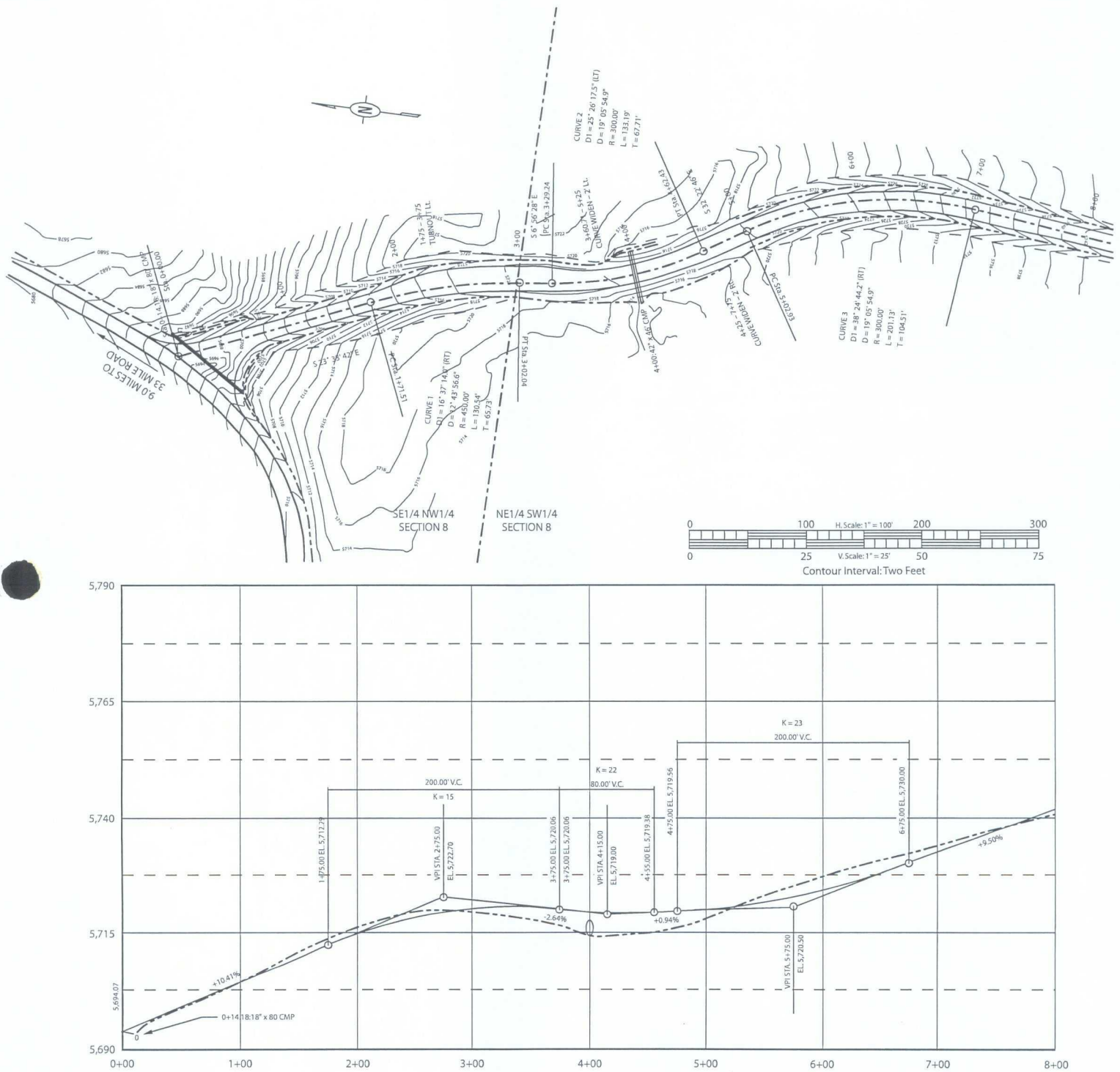


Figure 4. Typical road plan and profile drawing for an oil and gas road.

Road Maintenance

When required, the operator shall submit a road maintenance plan for all roads that will be constructed or used in conjunction with the drilling program. The maintenance plan will contain provisions for maintaining the traveled way, protection of the roadway features, requirements for road management, and the method to be used in carrying out maintenance activities.

Maintenance activities normally required include monitoring, blading, surface replacement, dust abatement, spot repairs, slide removal, ditch cleaning, culvert cleaning, litter cleanup, noxious weed control, and snow removal. When applicable, specific areas shall be identified in the road maintenance plan for disposal of slide material, borrow or quarry sites, stockpiles, or other uses that are needed for the project.

Key maintenance considerations include regular inspections; reduction of ruts and holes; maintenance

of crowns and outslopes to keep water off the road; replacement of surfacing materials; clearing of sediment blocking ditches and culverts; maintenance of interim reclamation; and noxious weed control.

Conduct additional inspections following snowmelt or heavy or prolonged rainfall to look for drainage, erosion, or siltation problems. Blade only when necessary and avoid blading established grass and forb vegetation in ditches and adjacent to the road. Ensure that maintenance operators have proper training and understand the surface management agency's road maintenance objectives.

Authorized users may perform their share of road maintenance, enter into road maintenance agreements administered by the users, or may be required to deposit sufficient funds with the surface management agency to provide for their share of maintenance. If the road has only one permitted user, other than incidental use by others, that user may have total responsibility for maintenance.



This example of interim road reclamation shows that reapplying topsoil and the regrowth of vegetation along the road borrow ditches of this resource road reduces the loss of forage, habitat, and sediment, decreases maintenance costs, and helps maintain the scenic quality.

Drainage and Drainage Structures

The proper design and construction of structures for the drainage of water from or through the roadway often contributes the most to the long-term success of the road and structure and minimizes maintenance and adverse environmental effects, such as erosion and sediment production. It is vitally important to keep the water off the road.

Road Drainage Design

The most economical control measure should be designed to meet resource and road management objectives and constraints. The economic considerations should include both construction and maintenance costs. The need for drainage structures can be minimized by proper road location. However, adequate drainage is essential for a stable road. A proper drainage system should include the best combination of various design elements, such as ditches, culverts, drainage dips, crown, in-slope or out-slope, low-water crossings, subsurface drains, and bridges.

Surface Drainage

Surface drainage provides for the interception, collection, and removal of water from the surface of roads and slope areas. The design may need to allow for debris passage, mud flows, and water heavily laden with silt, sand, and gravel. Culverts should be designed in accordance with applicable practices adopted by State and Federal water quality regulators under authority of the Federal Clean Water Act (CWA). Culverts should accommodate a 10-year flood without development of a static head and avoid serious velocity damage from a 25-year flood.

Subsurface Road Drainage

Subsurface drainage is provided to intercept, collect, and remove groundwater that may flow into the base course and subgrade; to lower high water tables; or to drain locally saturated deposits or soils.

Drainage Structures

Proper location and design can provide economical and efficient drainage in many cases. However, structural measures are often required to ensure proper and adequate drainage. Some of the most common structures are drainage dips, ditches, road crowning, culverts, and bridges.

Drainage Dips

The primary purpose of a drainage dip is to intercept and remove surface water from the travelway and shoulders before the combination of water volume and velocity begins to erode the surface materials. Drainage dips should not be confused with water bars, which are normally used for drainage and erosion protection of closed or blocked roads. See Figure 5 for an illustration of a typical drainage dip and construction specifications. Spacing of drainage dips depends upon local conditions such as soil material, grade, and topography. The surface management agency should be consulted for spacing instructions.

Ditches

The geometric design of ditches must consider the resource objectives for soil, water, and visual quality; maintenance capabilities and associated costs; and construction costs. Ditch grades should be no less than 0.5 percent to provide positive drainage and to avoid siltation. The types of ditches normally used are drainage, trap, interception, and outlet.

Road Crowning

Roads that use crowning and ditching are common and can be used with all road classes, except non-constructed roads. This design provides good drainage of water from the surface of the road.

Drainage of the inside ditch and sidehill runoff is essential if the travelway is to be kept dry and passable during wet weather.

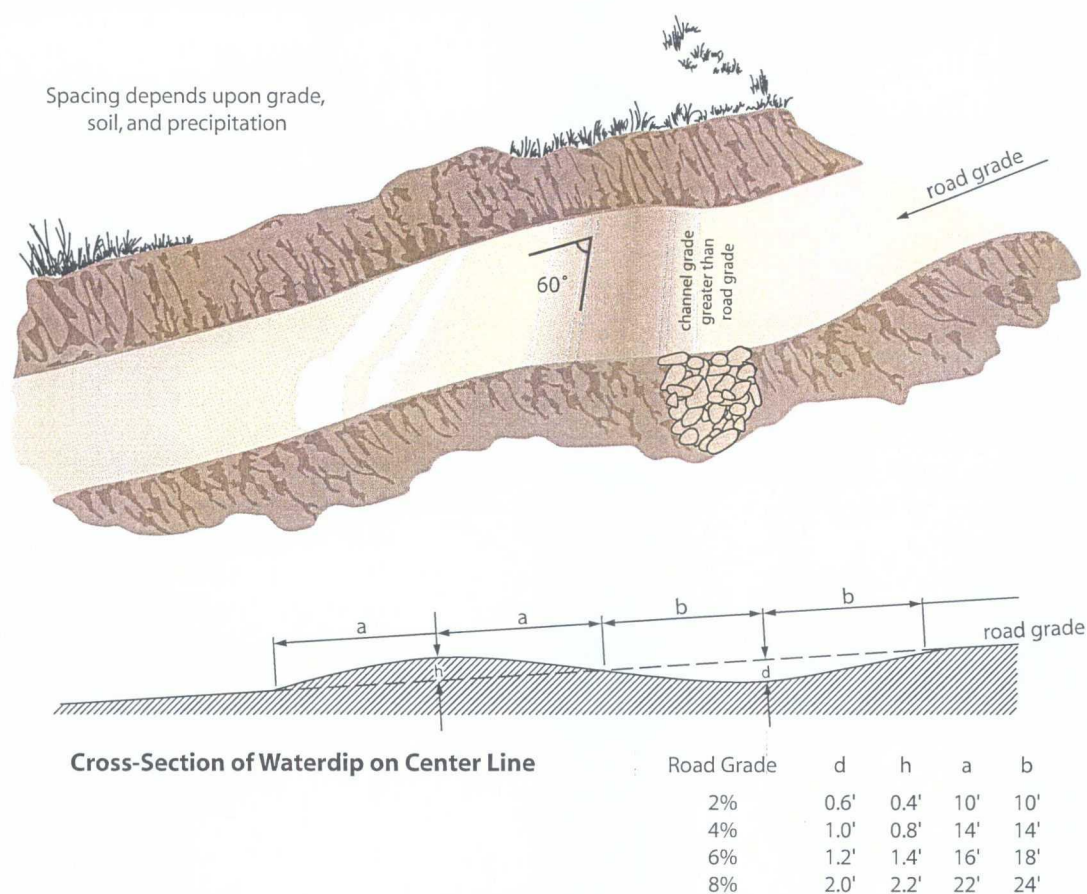


Figure 5. Typical drainage dip and construction specifications.

Culverts

Culverts are used in two applications: in streams and gullies to allow normal drainage to flow under the travelway and to drain inside road ditches. The latter may not be required if drainage dips are used. The location of culverts should be shown on the plan and profile or similar drawings or maps submitted with the APD.

All culverts should be laid on natural ground or at the original elevation of any drainage crossed, except as noted for ditch relief culverts. See Figures 6 and 7 for installation details.

Culverts should have a minimum diameter of 18 inches. The diameter should be determined by the anticipated amount of water that would flow through the culvert. Factors to be considered include the geographic area being drained, soils and slopes in the drainage area, annual precipitation, and likely storm events.

The outlet of all culverts should extend at least 1 foot beyond the toe of any slope. It may be necessary to install rip-rap or other energy dissipation devices at the outlet end of the culvert to prevent soil erosion or trap sediment (see example in the photograph).



Properly sized rock rip-rap at culvert outlets helps reduce water velocity and resulting soil erosion.

Maximum Recommended Culvert Spacing (ft)

Soil Type	Road Grade 2–4%	Road Grade 5–8%	Road Grade 9–12%
Highly erosive granitic or sandy	240	180	140
Intermediate erosive clay or loam	310	260	200
Low erosive shale or gravel	400	325	250

Figure 6. Culvert spacing.

All culverts used in the construction of access roads should be concrete, corrugated metal pipe made of steel, or properly bedded and backfilled corrugated plastic pipe. Only undamaged culverts are to be used, and any culvert should be inspected for damage prior to installation. All spots on the pipes where the zinc coating has been injured should be painted with two coats of zinc-rich paint or otherwise repaired as approved by the surface management agency.

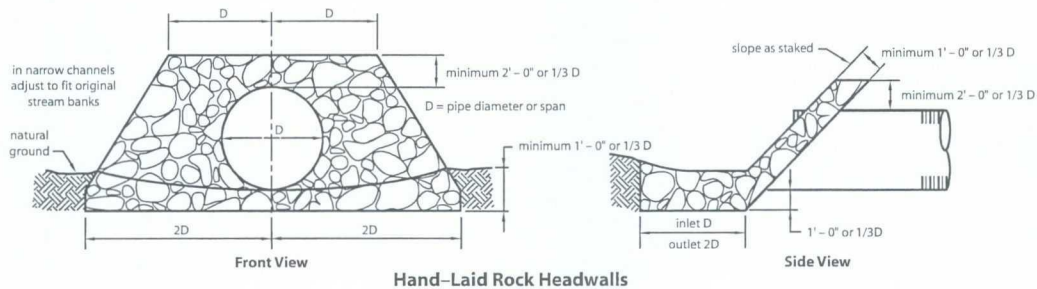
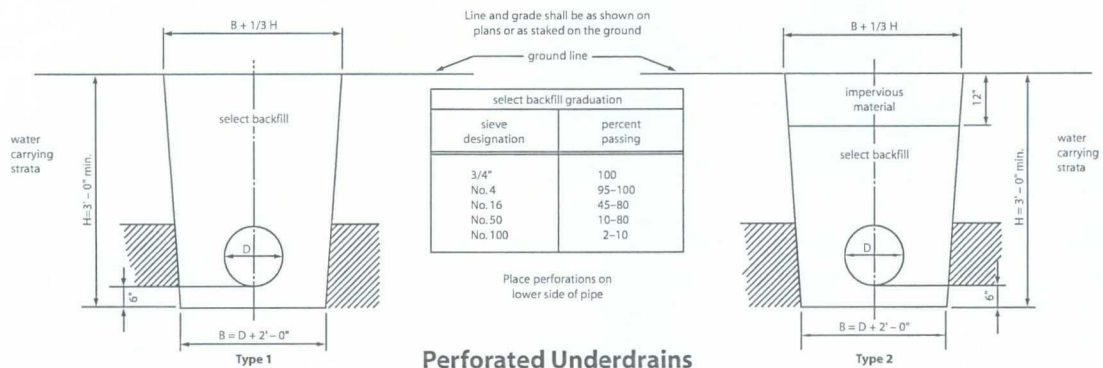
Excavation, bedding, and backfilling of culverts should be conducted according to requirements of the surface management agency and good engineering practices. Compliance with applicable Clean Water Act Best Management Practices and requirements for passage of aquatic species is required.

Ditch Relief Culverts

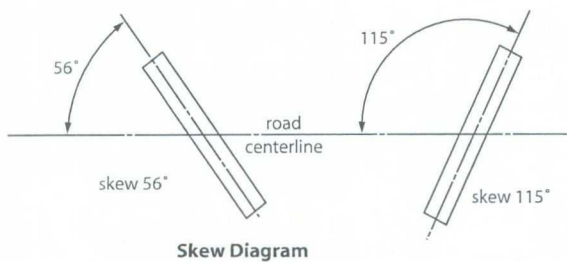
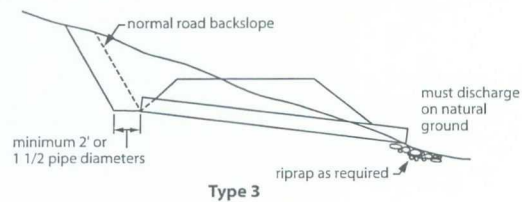
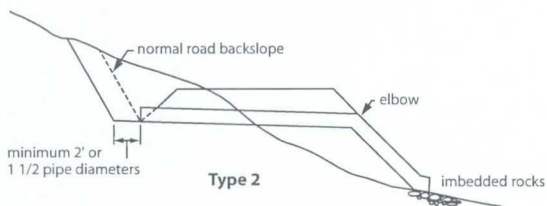
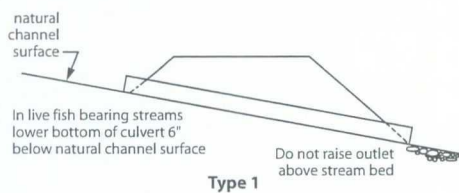
Ditch relief culverts are installed to periodically relieve the ditch line flow by piping water to the opposite side of the road where the flow can be dispersed away from the roadway. The spacing of ditch relief culverts (Figure 6) is dependent on the road gradient, soil types, and runoff characteristics.

A culvert with an 18-inch diameter is the minimum for ditch relief to prevent failure from debris blockage.

The depth of culvert burial must be sufficient to ensure protection of the culvert barrel for the design life of the culvert. This requires anticipating the amount of material that may be lost due to road use and erosion.



Culvert Construction Details



Typical Bedding Details

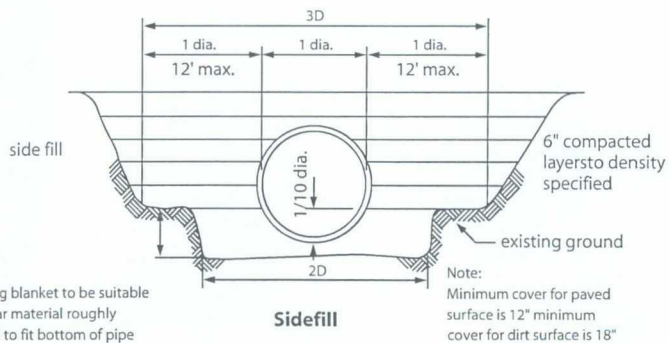
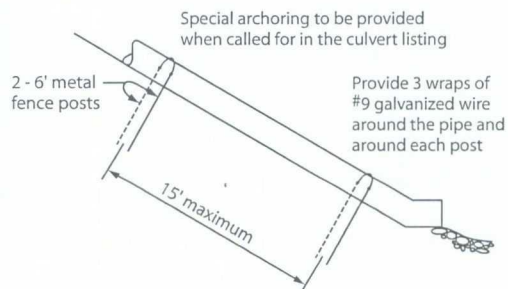
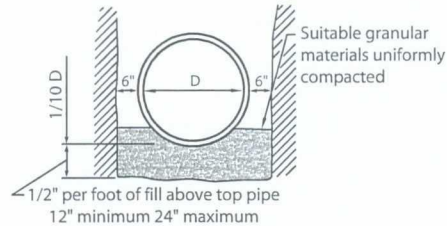


Figure 7. Diagrams for proper culvert installation

Ditch relief culverts can provide better flow when skewed with an entrance angle of 45 to 60 degrees with the side of the ditch. The culvert gradient should be greater than the approach ditch gradient. This improves the flow hydraulics and reduces siltation and debris plugging the culvert inlet. Culverts placed in natural drainages can also be used for ditch relief.

Bridges and Major Culverts

Federal Highway Administration (FHA) regulations and BLM and FS road manuals require that on roads open to public travel, all bridges and culverts that in combination span at least 20 feet horizontal distance, must comply with the National Bridge Inspection and Reporting Standards. Thus, BLM and FS manuals require that all such facilities have engineering approval from Regional or State offices. Operators are encouraged to prepare applications requiring major culverts or bridges to allow sufficient time for agency engineering evaluations. Construction of some stream crossings may require a Section 404 Corps of Engineers permit in addition to the approval of the surface management agency.

Wetland Crossings

Wetlands are especially sensitive areas and should be avoided, if possible. Generally, these areas require crossings that prevent unnatural fluctuations in water level. Marshy and swampy terrain may contain bodies of water with no discernible current. The design of culverts for roads crossing these locations requires unique considerations. Construction of some wetland crossings may require a Section 404 Corps of Engineers permit in addition to the approval of the surface management agency.

The culvert should be designed with a flat grade so water can flow either way and maintain its natural water level on both sides. The culvert may become partially blocked by aquatic growth

and should be installed with the flowline below the standing water level at its lowest elevation. Special attention must be given to the selection of culvert materials that will resist corrosion.

Low-Water Crossings

Roads may cross small drainages and intermittent streams where culverts and bridges are unnecessary. The crossing can be effectively accomplished by dipping the road down to the bed of the drainage. Site-specific designs and the construction of gravel, rip-rap, or concrete bottoms may be required in some situations. In no case should the drainage be filled so that water will be impounded. Low-water crossings that are not surfaced should not be used in wet conditions. Low-water crossings, in combination with culverts, may be utilized if the crossing is designed such that the structure is stable and self cleaning.

Subdrainage

If water is not removed from the subgrade or pavement structure, it may create instability, reduce load-bearing capacity, increase possible damage from frost action, and create a safety hazard by freezing on the road surface.

Perforated pipe drains and associated filter fabric or aggregate filters may be used when necessary to provide subdrainage. Other methods may be approved by the authorized officer.

Subdrainage systems may effectively reduce final road costs by decreasing the depth of base course needed, thereby reducing subgrade widths. This, in turn, results in less clearing and excavation. Maintenance savings may also be realized as the result of a more stable subgrade.

The solutions to subdrainage problems can be expensive. Road management techniques, such as reducing traffic loads or removing traffic until a subgrade dries out, may be considered as an alternative.

Pipelines and Flowlines

Construction

Steep hillsides and water courses should be avoided in the location of pipelines and flowlines. Flowline routes should take advantage of road corridors wherever possible to minimize surface disturbance and provide better leak detection and access for installation and repair operations. Consider maintenance needs and safety when burying power and pipelines in or immediately adjacent to the road.

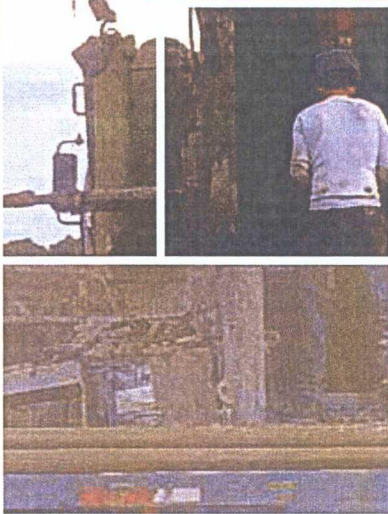
When clearing is necessary, the width disturbed should be kept to a minimum. Topsoil material must be stockpiled to the side of the routes where cuts and fills or other surface disturbances occur during pipeline construction. Topsoil material must be segregated and not be mixed or covered with

subsurface material. Bladed materials must be placed back into the cleared route upon completion of construction and returned back to the original contour before reapplying topsoil.

Pipelines and flowlines should be tested for leaks before backfilling trenches. Pipeline trenches should be compacted during backfilling. After construction, cut-and-fill slopes must be regraded to conform to the adjacent terrain and reclaimed. Pipeline rights-of-way must be maintained in order to correct backfill settling and prevent erosion.

Pipeline construction should not block, dam, or change the natural course of any drainage. Suspended pipelines should provide adequate clearance for high-flow events, floating debris, wildlife, or livestock. Pipelines buried across stream crossings should be buried below the scouring depth.

Chapter 5 – Drilling and Production Operations



General Operating Standards and Objectives

Onshore oil and gas lease operations are subject to applicable laws, regulations, lease terms, the Application for Permit to Drill (APD), APD conditions of approval, Onshore Oil and Gas Orders, Notices to Lessees, and orders and instructions of the authorized officer. These include, but are not limited to, conducting

operations in a manner that ensures the proper handling, measurement, disposition, and site security of leasehold production and protecting other natural resources, environmental quality, life, and property. The primary objective is to maximize the ultimate recovery of oil and gas with minimum waste and with minimum adverse effect on the ultimate recovery of other mineral resources, other natural resources, and environmental quality.

Production and sales reports must be filed with the Minerals Management Service (MMS), as appropriate, under regulatory requirements at 30 CFR Subpart B, using *Oil and Gas Operations Report* (OGOR), Form MMS-4054.

Well Completion Report

A *Well Completion or Recompletion Report and Log, Form 3160-4*, is required to be filed within 30 days after completion of a well either for abandonment or production. The well completion report must reflect the mechanical and physical condition of the well. Geologic information, and when applicable, information on the completed interval and production is required.

Subsequent Well Operations

Productive wells and service wells periodically require repair and workover operations that may or may not require prior approval or subsequent notification. The operator should contact the surface management agency to confirm local requirements when surface disturbance activities are involved.

Operations requiring the prior approval of BLM's authorized officer include: deepening, plugging-back, non-routine fracturing jobs, recompletion in a different interval, and conversion to a service well. If there is additional surface disturbance, the proposal must include a Surface Use Plan of Operations. A subsequent report of operations must also be filed for these operations following completion of the work.

Operations, such as routine fracturing or acidizing jobs or recompletion in the same interval, do not require prior approval if such operations do not involve additional surface disturbance and conform to standards of prudent operating practice. However, a subsequent report of operations must be filed for these operations.

No prior approval or subsequent report is required for operations such as well cleanout or routine operations.

The required form for obtaining approval or reporting subsequent operations is *Sundry Notices and Reports of Wells, Form 3160-5* (Appendix 2). For more detailed information on reporting requirements, refer to 43 CFR 3162.3-2.

All wastes are to be treated or disposed of in an approved manner consistent with existing laws and regulations. Modifications of production handling equipment may require the submittal of a new site facility diagram or may require a new site security plan.

Approval Procedures

For operations requiring prior approval by the surface management agency or the BLM, the operator must submit a Sundry Notice or APD, as applicable. With the appropriate form, a detailed written statement of the plan of work must be provided to the authorized officer. When additional surface disturbance is proposed that was not previously authorized for the well pad or right-of-way, a description of any subsequent new construction, reconstruction, or alteration of existing facilities, including roads, dam sites, flowlines and pipelines, pits, tank batteries, or other production facilities on any lease, must be submitted to the authorized officer for environmental reviews and approval. On FS-administered lands, the BLM will coordinate with the FS to obtain its approval on surface disturbing activities.

Emergency repairs may be conducted without prior approval provided the authorized officer is promptly notified. Emergency repairs are defined as actions that are necessary in order to avoid threats to human safety or the environment, or to prevent significant loss of royalty income if such actions were delayed until prior approval could be given by the BLM authorized officer.

Production Startup Notification

Operators will notify the authorized officer by Sundry Notice (Form 3160-5) or letter no later

than the fifth business day after any well begins production anywhere on a lease site or allocated to a lease site, or resumes production in the case of a well that has been off production for more than 90 days as required by Onshore Order No. 4 for oil and Onshore Order No. 5 for gas.

Measurement of Production

All oil, other hydrocarbons, and gas produced from the leased lands are to be put in a marketable condition to the extent economically feasible.

Oil production must be measured by tank gauging, positive displacement metering system, or other methods acceptable to the authorized officer. No oil is to be diverted to a pit except in emergency situations or with prior approval from the authorized officer. Oil in the pit must be recovered promptly, and the pit must be kept reasonably free from surface accumulations.

Gas production must be measured by orifice meters or other methods acceptable to the authorized officer. The flaring or venting of gas from leasehold operations must meet the requirements of Notice to Lessee, *NTL-4A: Royalty or Compensation for Oil and Gas Lost*, or an applicable Onshore Oil and Gas Order.

Disposal of Produced Water

Produced water from leasehold operations will be disposed of by subsurface injection, lined or unlined pits, surface discharge into channels or impoundments, or other methods, including beneficial use, acceptable to the authorized officer and in accordance with the requirements of Onshore Order No. 7, Disposal of Produced Water, and other Federal or State regulations.

Disposal of produced water often requires permits from State agencies or the Environmental Protection Agency (EPA), in addition to authorization by the BLM under Onshore Order No. 7. Disposal or use of water produced from Federal wells must be approved by the BLM before such operations begin, even if the operator has approval from the surface management agency. In cases of water disposal into pits or other impoundments, the structures must

conform to approved construction requirements in accordance with Onshore Order No. 7, BLM Manual 9172, and applicable State agency requirements.

Pits, water impoundments, and surface discharges that present a potential hazard to humans, livestock, wildlife, and other resources should be subject to appropriate mitigation, such as fencing, netting, caging, or covers, as appropriate. Refer to Figure 1 for enclosure fence construction standards.

Pollution Control/ Hazardous Waste

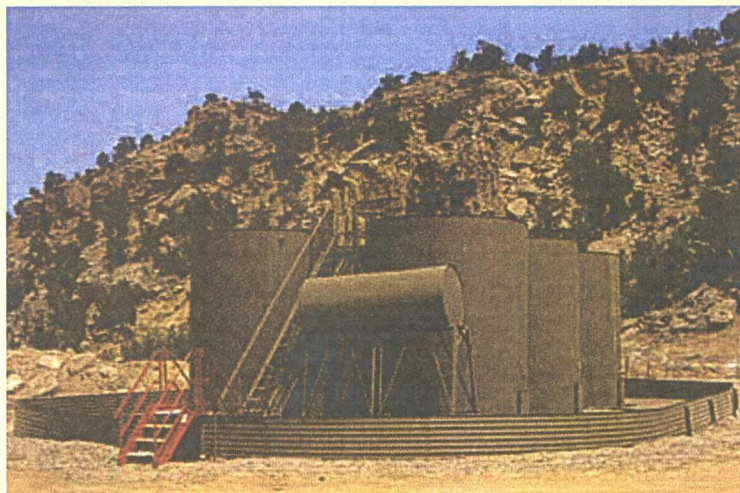
Operators are encouraged to substitute less toxic, yet equally effective products for conventional drilling products. All spills or leakages of oil, gas, salt water, toxic liquids or waste materials, blowouts, fires, personal injuries, and fatalities shall be reported by the operator to the BLM and the surface management agency in accordance with the requirements of *Notice to Lessees NTL-3A; Reporting of Undesirable Events*, and in accordance with any applicable local requirements.

The BLM requires immediate reporting of all Class I major events, such as spills of more than 100 barrels of fluid/500 MCF of gas released; fires that consume 100 bbl or more oil or 500 MCF gas; life threatening or fatal injury/loss of well control; release of reportable quantities of hazardous substances; spill, venting, or fire in sensitive areas, such as parks, recreation sites, wildlife refuges, lakes, reservoirs, streams, and urban or suburban areas (see the Spill Report format in Appendix 2). Volumes discharged during any of the above incidents will be estimated as necessary. Operators must take immediate action to

prevent and control spills and the BLM, the surface management agency, and other applicable regulatory authorities must be consulted prior to treating or disposing of wastes and spills. Operators should become familiar with local surface management agency requirements for reporting and managing spills and leaks.

Containment structures sufficiently impervious to prevent a discharge to waters of the United States, such as containment dikes, containment walls, drip pans, or equivalent protection actions are to be constructed and maintained around all qualifying bulk oil storage facilities, including tank batteries, consistent with the Environmental Protection Agency's Spill Prevention, Control, and Countermeasure (SPCC) regulation (40 CFR 112). The containment structure must have sufficient volume to contain, at a minimum, the content of the largest storage tank containing liquid hydrocarbons within the facility/battery and sufficient freeboard to contain precipitation, unless more stringent protective requirements are deemed necessary by the authorized officer. Drip pans should be routinely checked and cleaned of petroleum or chemical discharges and designed to prevent access by wildlife and livestock.

Containment dikes are not to be constructed with topsoil or coarse, insufficiently impervious spoil material. Containment is strongly suggested for produced water tanks. Chemicals should be placed within secondary containment and stored



This central tank battery has been surrounded with a corrugated metal containment wall.

so that the containers are not in contact with soil or standing water and product and hazard labels are not exposed to weathering.

Safety and Emergency Actions

The operator must conduct and maintain its operations and facilities in a safe manner and protect the public from any hazardous conditions. In the event of an emergency, the operator may take immediate action without prior surface management agency approval to safeguard life or to prevent significant environmental degradation. The BLM or the FS must receive notification of the emergency situation and the remedial action taken by the operator as soon as possible, but not later than 24 hours after the emergency occurred. If the emergency involved surface resources on another agency's land or on a private surface owner's land, the operator should also notify the agency or surface owner within 24 hours. Operators may also undertake emergency repairs without prior approval if they promptly notify the BLM.

Noise Control

Noise that has the potential to disturb wildlife, livestock, and private surface owners or

neighbors should be controlled to reduce sound levels. Suitable mufflers should be installed on all internal combustion engines and certain compressor components. Other noise reduction techniques to consider include siting wells, production facilities, compressors, roads to take advantage of topography and distance, and constructing engineered sound barriers or sound-insulated buildings. The placement of tank batteries and other facilities offsite and the use of remote well monitoring systems can reduce vehicle traffic in the field and the associated noise.

Visual/Scenic Resources

The operator must comply with the visual resource management objectives established in the land use plan for all activities that alter landforms, disturb vegetation, or require structures (BLM 8400 Manual Series). Site-specific mitigation practices may be required by the surface management agency to minimize visual impacts, while remaining consistent with the lessee's right to conduct operations under the lease. A primary consideration is the selection of a paint color that allows long-term facilities to blend in with the natural landscape background. Other considerations in more visually sensitive areas may include the aesthetic siting of roads, well locations, and production facilities; avoiding straight roads; reducing unnecessary



This pumping unit has been painted a color that helps it blend in with the surrounding juniper tree screening.

disturbance; modifying production facility or well pad shape or size; using low-profile or below ground pumping units and low-profile tanks; avoiding the placement of tanks on the ridgeline; manipulating vegetation to feather straight edges; using natural-looking earthwork berms or vegetative screening; and completing interim reclamation of disturbed areas.

Painting of Facilities

All long-term facility structures should be painted a color that enables the facilities to blend with the natural background color of the landscape as seen from a viewing distance and location typically used by the public. The selected color should be one or two shades darker than the dominant background color, typically a vegetation color.

In visually sensitive areas, the use of properly chosen camouflage techniques may be an appropriate method for matching the texture of the landscape. Semi-gloss paints may be preferred because of their resistance to staining and weathering. Where necessary, the use of contrasting safety paint can be used to highlight and mitigate a potential hazard, such as a tripping hazard or protruding or mechanical edge that could harm the operator or public.

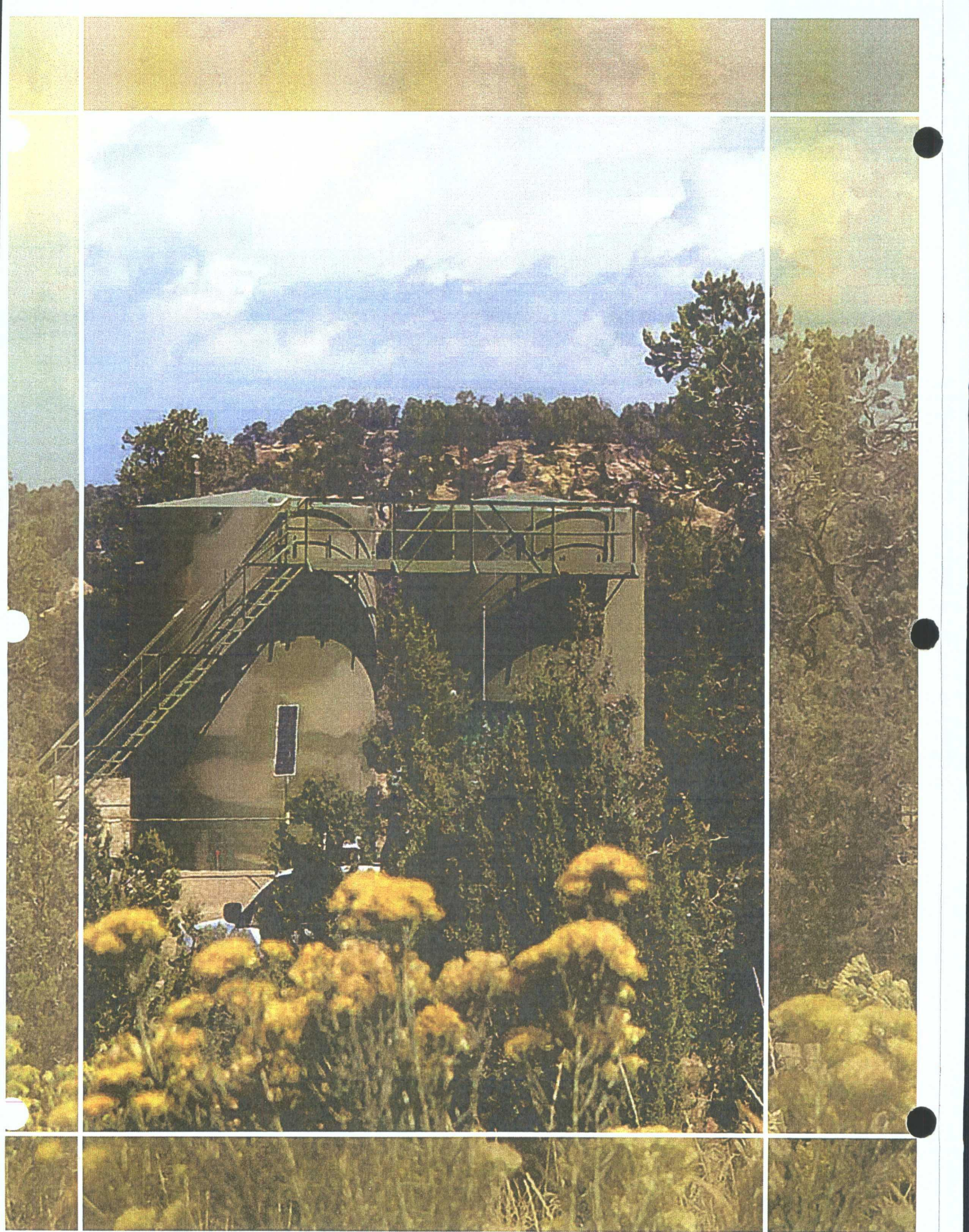
Placement of Production Facilities

When production facilities are placed on the well pad, they should be placed to allow for

maximum interim recontouring and revegetation of the well location. Consider centralizing production facilities offsite in an area that is out of important wildlife habitat or is screened from view by vegetation or topography. It is often possible to eliminate the need to construct all-weather roads to each individual well by instead constructing one all-weather access road to a centralized production facility closer to the main access road.

Inspection and Enforcement

Leaseholds that are producing or are expected to produce significant quantities of oil or gas in any year, or have a history of noncompliance, will be inspected by the BLM at least once a year and all operations on National Forest System lands will be inspected by the FS at least once a year. Other factors, such as health and safety, environmental concerns, and potential conflict with other resources also determine inspection priority. Inspections of leasehold operations are made to ensure compliance with applicable laws, regulations, lease terms, the APD and its conditions of approval, Onshore Oil and Gas Orders, NTLs, and other written orders of the authorized officer. Operators are expected to initiate their own inspection programs, identify noncompliance, and take appropriate corrective actions, rather than relying on Federal inspections to identify problems.



Chapter 6 – Reclamation and Abandonment



Reclamation Objective

Oil and gas development is one of many uses of the public lands and resources. While development may have a short- or long-term effect on the land, successful reclamation can ensure the effect is not permanent. During the life of the development, all disturbed areas not needed for active support of production operations should undergo “interim” reclamation in order to minimize the environmental impacts of

development on other resources and uses. At final abandonment, well locations, production facilities, and access roads must undergo “final” reclamation so that the character and productivity of the land and water are restored.

Planning for reclamation **prior** to construction is critical to achieving successful reclamation in the future. Reclamation becomes significantly more difficult, more expensive, and less effective if sufficient topsoil is not salvaged, interim reclamation is not completed, and if proper care is not taken to construct pads and roads in locations that minimize reclamation needs.

The long-term objective of final reclamation is to set the course for eventual ecosystem restoration, including the restoration of the natural vegetation community, hydrology, and wildlife habitats. In most cases, this means returning the land to a condition approximating or equal to that which existed prior to the disturbance. The operator is generally not responsible for achieving full ecological restoration of the site. Instead, the operator must achieve the short-term stability, visual, hydrological, and productivity objectives of the surface management agency **and** take the steps necessary to ensure that long-term objectives will be reached through natural processes.

The reclamation process involves restoring the original landform or creating a landform that approximates and blends in with the surrounding landform. It also involves salvaging and reusing all available topsoil (whatever soil is on top) in a timely manner, revegetating disturbed areas to native species, controlling erosion, controlling invasive non-native plants and noxious weeds, and monitoring results. Reclamation measures should begin as soon as possible after the disturbance and continue until successful reclamation is achieved. With proper reclamation measures, over time, local native species will become re-established on the site and the area will regain its original productive and scenic potential.

Reclamation generally can be judged successful when a self-sustaining, vigorous, diverse, native (or otherwise approved) plant community is established on the site, with a density sufficient to control erosion and non-native plant invasion and to re-establish wildlife habitat or forage production. Erosion control is generally sufficient when adequate groundcover is reestablished, water naturally infiltrates into the soil, and gullying, headcutting, slumping, and deep or excessive rilling is not observed. The site must be free of State- or county-

listed noxious weeds, oil field debris, contaminated soil, and equipment. The operator should inform the surface management agency that reclamation has been completed and that the site is ready for final inspection when these requirements have been met.

Reclamation Plan

A reclamation plan is included in the Surface Use Plan of Operations and should discuss plans for both interim and final reclamation. Reclamation is required of any disturbed surface that is not necessary for continued production operations. The operator should submit a new reclamation plan with the Notice of Intent to Abandon (NIA) or Subsequent Report Plug and Abandon (SRA) using the Sundry Notices and Reports on Wells Form 3160-5 when abandoning wells and other facilities that do not have an approved reclamation plan or when the operator would like to update the plan. The BLM will forward the request to the FS or other surface management agency as appropriate. Additional reclamation measures may be required based on the conditions existing at the time of abandonment and made a part of the conditions of approval of the NIA or SRA. Earthwork for interim and final reclamation generally must be completed within 6 months of well completion or plugging (weather permitting). The following information includes components of the reclamation plan.

Plugging the Well

Well abandonment operations may not be started without the prior approval of the *Sundry Notices and Reports on Wells, Form 3160-5*, by the authorized officer. The Sundry Notice serves as the operator's NIA. In the case of newly drilled dry holes, failures, and emergency situations, oral approval may be obtained from the authorized officer subject to written confirmation. The operator must contact the BLM prior to plugging a well to allow for approval and witnessing of the plugging operations.

Pit Reclamation

All pits must be reclaimed to a safe and stable condition and restored to a condition that blends with the rest of the reclaimed pad area. If it was necessary to line the pit with a synthetic liner, the

pit must not be breached (cut) or filled (squeezed) while still containing fluids. Pits must be free of oil and other liquid and solid wastes prior to filling. Pits may be allowed to air dry or may be solidified in place with BLM or FS approval. The pit liner must be removed to the solids level or treated to prevent its reemergence to the surface or its interference with long-term successful revegetation. If necessary, the pit area should usually be mounded slightly to allow for settling and positive surface drainage.

The concentration of nonexempt hazardous substances in the reserve pit at the time of pit backfilling must not exceed the standards set forth in the Comprehensive Environmental Response, Compensation, and Liability Act of 1980 (CERCLA), 42 USC 9605, as amended by the Superfund Amendments and Reauthorization Act of 1986 (SARA), PL 99-499. All oil and gas drilling-related CERCLA hazardous substances removed from a location and not reused at another drilling location must be disposed of in accordance with applicable Federal and State regulations. {(Refer to 42 USC 9601(14)(Definition of "hazardous substances"); 42 USC 6921(2)(A)(exclusion of certain wastes associated with exploration and production); EPA 530-95-003, Crude Oil and Natural Gas Exploration and Production Wastes: Exemption from RCRA Subtitle C Regulation (May 1995)}.

Site Preparation and Revegetation

Disturbed areas should be revegetated after the site has been satisfactorily prepared. Site preparation will include respreading topsoil to an adequate depth, and may also include ripping, tilling, disking on contour, and dozer track-imprinting. The operator will usually be advised of the revegetation methods, objectives, and seasons to plant, unless this information is included in the Application for Permit to Drill (APD) reclamation plan. Native perennial species or other plant materials specified by the surface management agency or private surface owner will be used. Seeding should be accomplished by drilling on the contour whenever practical or by other approved methods such as dozer track-walking followed by broadcast seeding. Seeding or planting may need to be repeated until revegetation is successful, as determined by the surface management agency.

When conditions are not favorable for the establishment of vegetation, such as periods of drought or the lack of sufficient salvaged topsoil, the surface management agency may allow for subsequent reseedings to be delayed until soil moisture conditions become favorable or may require additional cultural techniques such as mulching, fertilizing, irrigating, fencing, or other practices. It is the operator's responsibility to monitor the site, take the necessary steps to ensure reclamation success, and to notify the surface management agency when success is achieved.

Reclamation is most effective when the ecology of the site is considered. The previous plant community or potential plant community native to the site should be identified to help determine the plant communities that can exist on the reclaimed site. Revegetation efforts will be hampered and costs increased if the site contains conditions detrimental to revegetation, such as heavy grazing pressure, insufficient salvaged topsoil, erosion, and compacted or contaminated soil. (Refer to Figure 1 for enclosure fence standards.)

Additional Guidelines

Supplemental guidelines and methods may be available that reflect local site and geographic conditions. These guidelines or methods may be obtained from the local surface management agency. Technical advances in reclamation practices are continually being developed that may be successfully applied to lands affected by oil and gas development.

Pipeline and Flowline Reclamation

Pipeline routes and roads should be co-located as much as possible to reduce reclamation needs and impacts to other resources. Pipeline trenches are to be compacted during backfilling and must be maintained to correct backfill settling and prevent erosion. Reclamation involves placing fill in the trench, compacting the fill, regrading cut-and-fill slopes to restore the original contour, replacing topsoil, installing temporary waterbars only where necessary to control erosion, and revegetating in accordance with a reclamation plan. Waterbars and

other erosion control devices must be maintained and repaired as necessary.

Following successful revegetation, surviving waterbars must be flattened to blend with the slope and then revegetated. If berms of topsoil were originally placed over the trench to accommodate settling, the surviving berms should also be flattened to blend with the surrounding landform and revegetated.

Final abandonment of pipelines and flowlines will involve flushing and properly disposing of any fluids in the lines. All surface lines and any lines that are buried close to the surface that may become exposed due to water or wind erosion, soil movement, or anticipated subsequent use, must be removed. Deeply buried lines may remain in place unless otherwise directed by the authorized officer.

Well Site Reclamation

Well site reclamation includes both interim and final reclamation.

Interim Reclamation

Interim reclamation consists of minimizing the footprint of disturbance by reclaiming all portions of the well site not needed for production operations. The portions of the cleared well site not needed for operational and safety purposes are recontoured to a final or intermediate contour that blends with the surrounding topography as much as possible. Sufficient level area remains for setup of a workover rig and to park equipment. In some cases, rig anchors may need to be pulled and reset after recontouring to allow for maximum reclamation. Topsoil is respread over areas not needed for all-weather operations. When practical, the operator should respread topsoil over the entire location and revegetate to within a few feet of the production facilities, unless an all-weather, surfaced, access route or turnaround is needed. Production facilities should be clustered or placed offsite to maximize the opportunity for interim reclamation. In order to inspect and operate the well or complete workover operations, it may be necessary to drive, park, and operate on restored, interim vegetation within the previously disturbed area. This is generally acceptable provided damage is repaired and reclaimed following use. Under some situations, such as the presence of moist, clay

soils, the operator or surface management agency may prefer that vegetation and topsoil be removed during workover operations and restored following operations to prevent soil compaction.

To reduce final reclamation costs; maintain healthy, biologically active topsoil; and to minimize habitat, visual, and forage loss during the life of the well, all salvaged topsoil should be spread over the area of interim reclamation, rather than stockpiled. Where the topography is flat and it is, therefore, unnecessary to recontour the well location

at the time of final reclamation, the operator may set aside sufficient topsoil for final reclamation of the small, unreclaimed area around the wellhead. Any topsoil pile set aside should be revegetated to prevent it from eroding and to help maintain its biological viability. On sloped ground, during final reclamation, the topsoil and interim vegetation must be restripped from portions of the site that are not at the original contour, the well pad recontoured, and the topsoil respread over the entire disturbed site to ensure successful revegetation.



During the start of well production, this well pad was recontoured, revegetated, and shaped to blend in with the surrounding natural forest openings. Well production facilities were constructed off-site and out of view.

Final Reclamation

Following well plugging, well sites that do not blend seamlessly with the surrounding landform (contour) should not be left in place, even if there has been successful regrowth of vegetation on the site. Revegetation alone does not constitute successful reclamation. Restoration of the original

landform is a key element in ensuring that the effects of oil and gas development are not permanent.

To achieve final reclamation of a recently drilled dry hole, the well site must be recontoured to original contour or a contour that blends with the surrounding landform, stockpiled topsoil evenly

redistributed, and the site revegetated. To achieve final reclamation of a formerly producing well, all topsoil and vegetation must be restripped from all portions of the old well site that were not previously reshaped to blend with the surrounding contour. All disturbed areas are then recontoured back to the original contour or a contour that blends with the surrounding landform, topsoil is redistributed, and the site revegetated.

In recontouring areas that have been surfaced with gravel or similar materials, the material must be removed from the well location or buried deep in the recontoured cut to prevent possible surface exposure. All excavations and pits must be closed by backfilling when they are dry and free of waste and graded to conform to the surrounding terrain.

Salvaged topsoil must be respread evenly over the surfaces to be revegetated. The topsoiled site should be prepared to provide a seedbed for reestablishment of desirable vegetation. Site preparation may include gouging, scarifying, dozer track-walking, mulching, fertilizing, seeding, and planting.

Water breaks and terracing should only be installed when absolutely necessary to prevent erosion of fill material and should be removed when the site is successfully revegetated and stabilized.

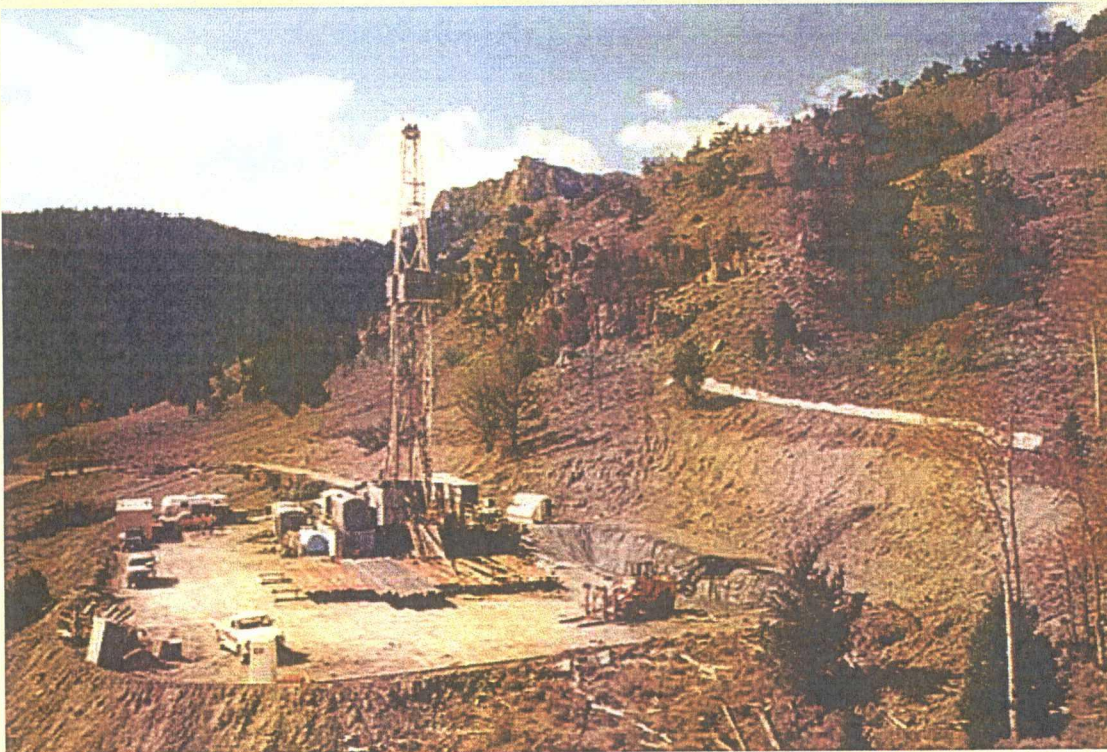
Road Reclamation

Interim reclamation consists of reclaiming portions of the road not needed for vehicle travel. Wherever possible, cut slopes, fill slopes, and borrow ditches should be covered with topsoil and revegetated to restore habitat, forage, scenic resources, and to reduce soil erosion and maintenance costs.

At abandonment, roads must be reclaimed by the operator unless the surface management agency or surface owner requests that they be left unreclaimed.

Final reclamation includes recontouring the road back to the original contour, seeding, controlling noxious weeds, and may also include other techniques to improve reclamation success, such as ripping, scarifying, replacing topsoil, constructing waterbars, pitting, mulching, redistributing woody debris, and barricading.

Seeds of native, perennial species or other plant materials specified by the surface management agency or surface owner must be used. If waterbars were used, they should be removed and seeded following successful revegetation.



The well pad and access road are constructed to the minimum size necessary to safely conduct drilling and completion operations.



The well pad and access road have been recontoured back to the original contour, the topsoil respread, and the site revegetated.

Reclamation of Other Associated Facilities

Other facilities and areas of surface disturbance associated with Federal oil and gas lease development, including water impoundments, power lines, metering buildings, compression facilities, and tank batteries must be removed and reclaimed in accordance with the standards identified previously and with the requirements of the surface management agency or surface owner.

Water Well Conversion

In some instances, the surface management agency or private landowner may wish to acquire a well that has encountered usable fresh water. Refer to 43 CFR 3162.3-4(b). In those cases, the operator must abandon the well and complete surface cleanup and reclamation according to BLM instructions. The BLM approval of the partial abandonment, completion of successful reclamation, and the signed release agreement will relieve the operator of further obligation for the well. The party acquiring the well assumes liability for the well.

Inspection and Final Abandonment Approval

The operator must file a Subsequent Report Plug and Abandon (SRA) following the plugging of a well. A Final Abandonment Notice (FAN) must be filed by the operator upon completion of

reclamation operations, which indicates that the site meets reclamation objectives and is ready for inspection. Upon receipt of the Final Abandonment Notice, the surface management agency will inspect the site to ensure reclamation is fully successful.

The BLM must approve the Final Abandonment Notice, even when the surface is managed by another surface management agency. Final abandonment will not be approved by the BLM until the surface reclamation work required by the APD, Notice of Intent to Abandon, or Subsequent Report Plug and Abandon has been completed and the required reclamation is acceptable to the surface management agency. The operator is responsible for monitoring reclamation progress and taking the necessary actions to ensure success.

Release of Bonds

If the well and associated facilities are covered by an individual lease bond, the period of liability on that bond can be terminated once the final abandonment has been approved. The principal (operator or lessee) can request termination of the period of liability from the BLM State Office holding the bond. If the well is covered by a statewide or nationwide bond, termination of the period of liability of these bonds is not approved until final abandonment of all activities conducted under the bond have been approved. The operator may request termination of the bond on the Final Abandonment Notice.