

Denton Field--Discovered
 in 1949
 Devonian and Wolfcamp
 production

--Discovered
 toka, and
 production

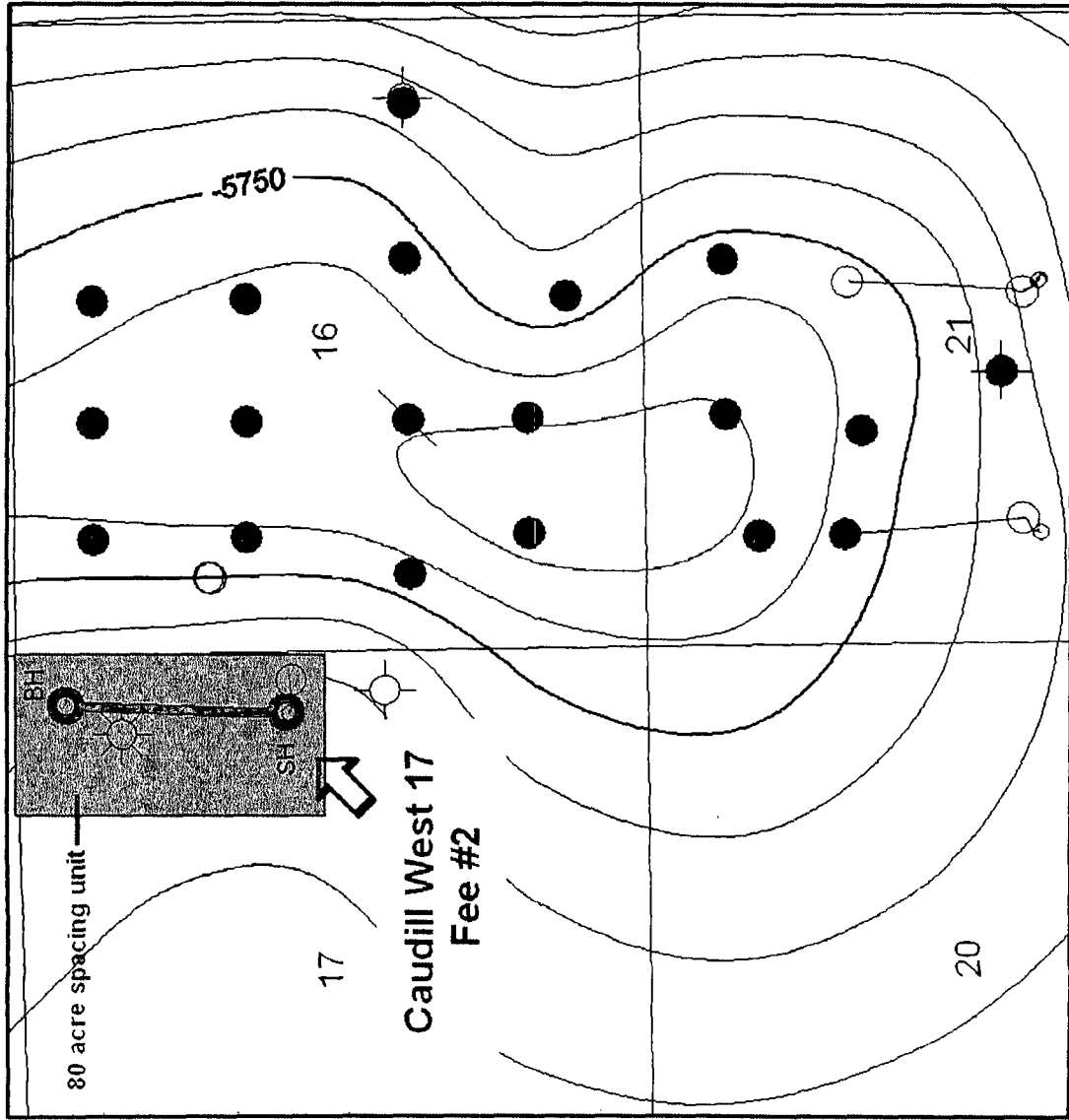
Caudill West 17 No. 2

Caudill South 21
 Fee #3H

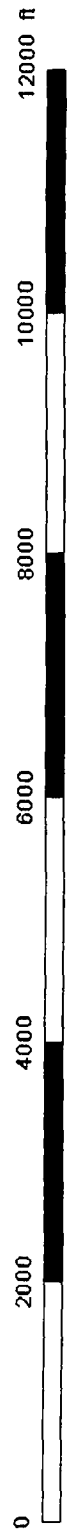
EXHIBIT **A**

0 2000 4000 6000 8000 10000 20000 ft

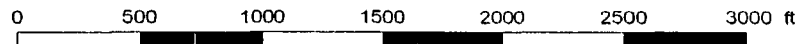
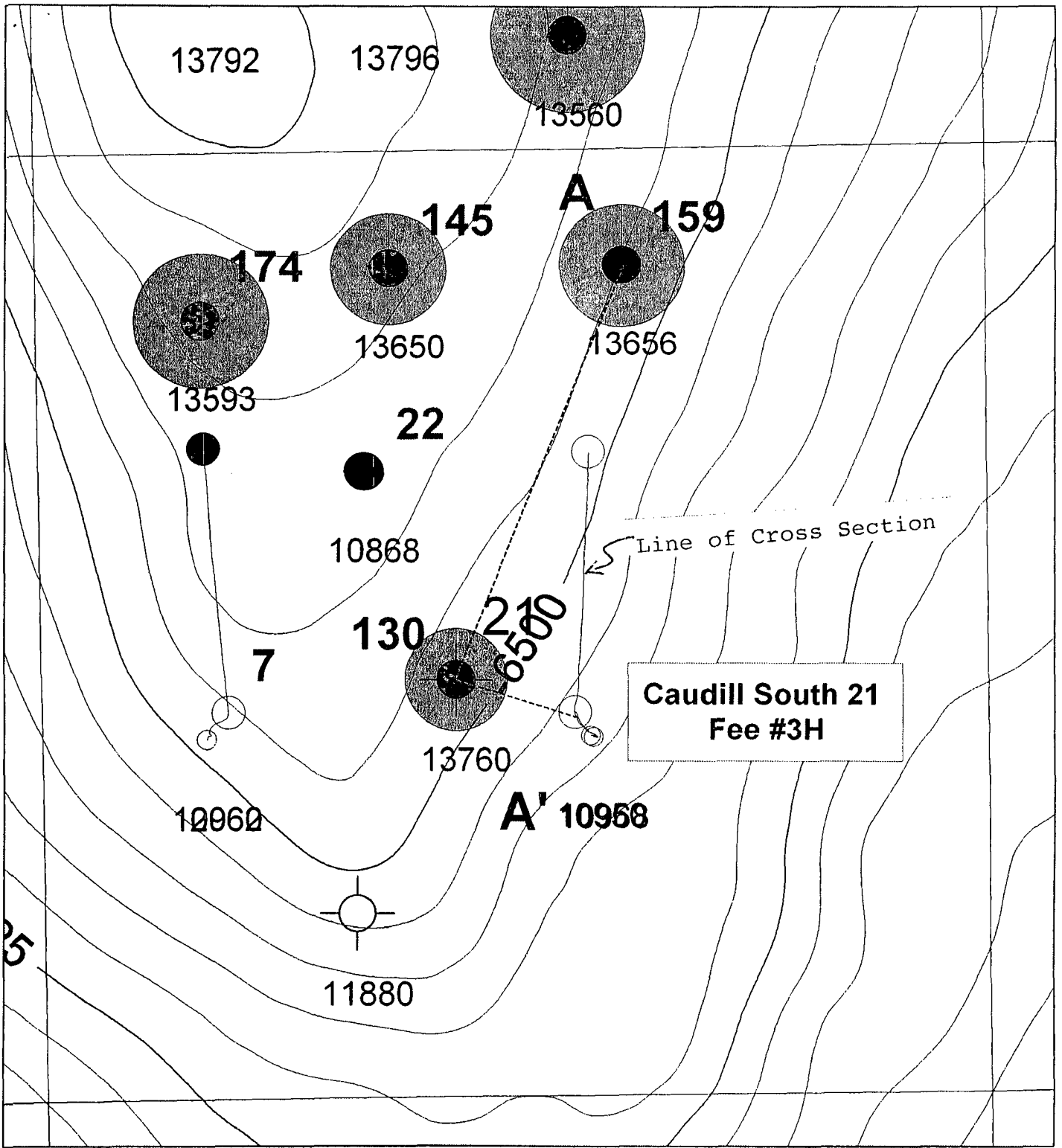
1:48000
 1 inch = 4000 feet



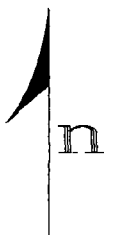
| | | | |
|--|----------------------|-------------------------|--|
| Cimarex Energy Co. | | | |
| Caudill Field, Lea Co., New Mexico Wolfcamp Structure Map | | | |
| Base Map | | | |
| Author: Melissa K. Iinger | C.I. = 25' | Date: 19 August 2008 | |
| | Scale: 1" = 1760' | | |



1 inch = 0.300 miles

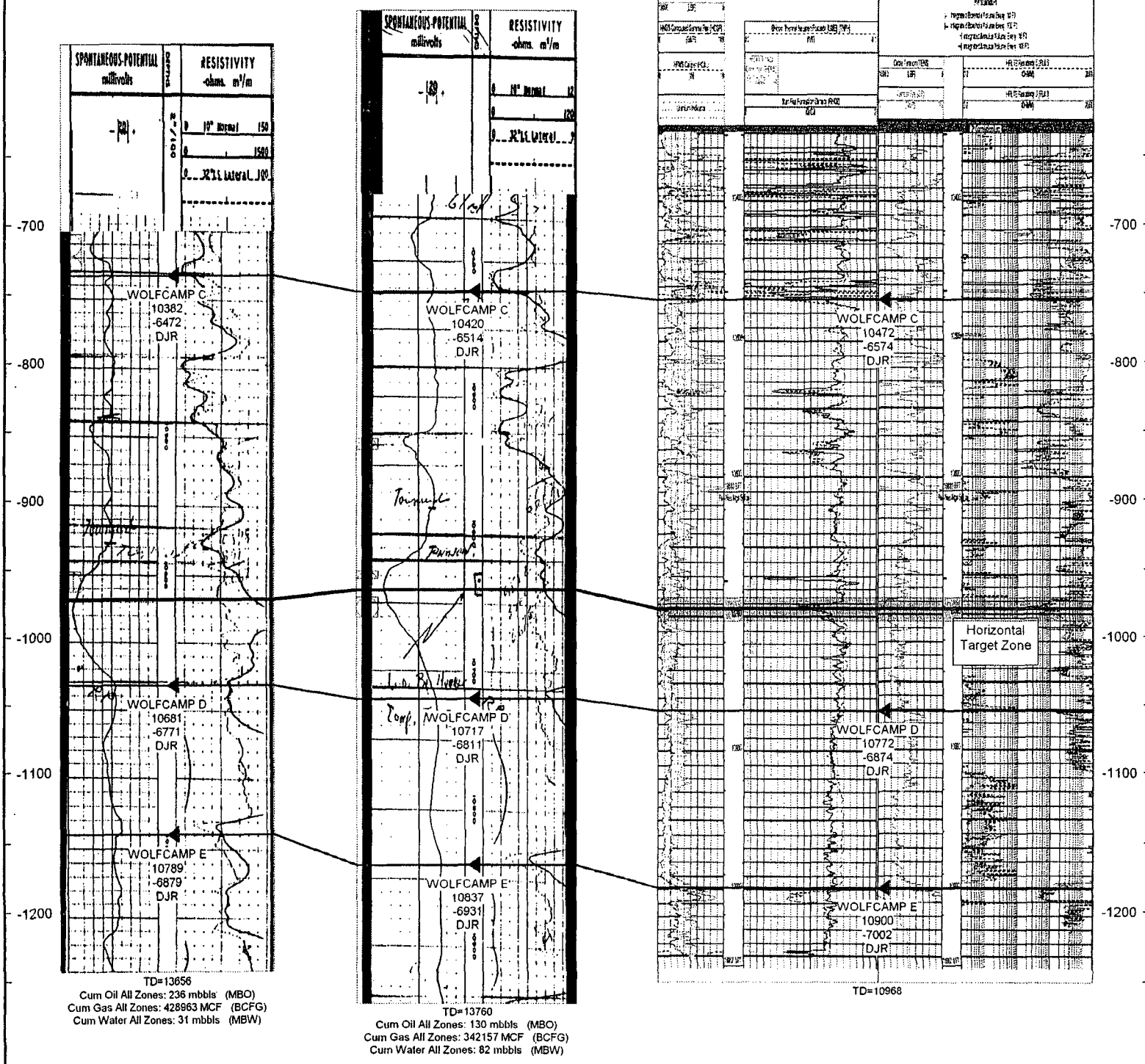
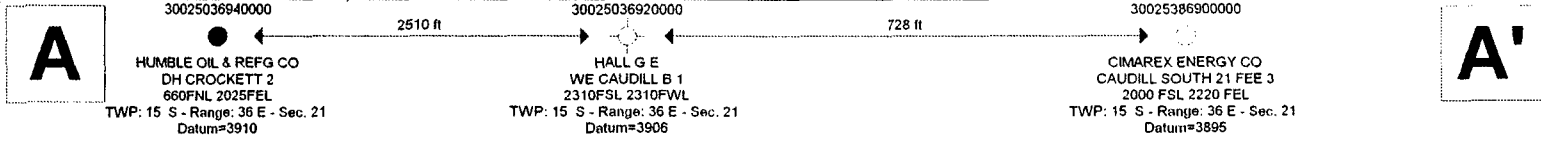


1:4800
1 inch = 400 feet



| | | |
|--|---------------------|-----------------------|
| <i>Cimarex Energy Co.</i> | | |
| Caudill and Denton Fields Lea Co., NM | | |
| Caudill South 21 Fee #3H Wolfcamp C-Zone Top Subsea Structure Map PVPM Cum Oil Production | | |
| Author: Mel Kluges | Scale: 1" = 400' | Date: 23 July 2008 |

Structural Cross Section Wolfcamp C Pay Zone Caudill Field (Permo-Penn)



| | |
|-----------------------------|-------------|
| Input DAS Files | |
| DATE | FILE |
| 08/20/03 | WOLF CAMP C |
| 08/20/03 | WOLF CAMP D |
| 08/20/03 | WOLF CAMP E |
| Output DAS Files | |
| DATE | FILE |
| 08/20/03 | WOLF CAMP C |
| 08/20/03 | WOLF CAMP D |
| 08/20/03 | WOLF CAMP E |
| OP System Version: 1500-000 | |
| DATE | FILE |
| 08/20/03 | WOLF CAMP C |
| 08/20/03 | WOLF CAMP D |
| 08/20/03 | WOLF CAMP E |

TD=13656
 Cum Oil All Zones: 236 mbbbls (MBO)
 Cum Gas All Zones: 428963 MCF (BCFG)
 Cum Water All Zones: 31 mbbbls (MBW)

TD=13760
 Cum Oil All Zones: 130 mbbbls (MBO)
 Cum Gas All Zones: 342157 MCF (BCFG)
 Cum Water All Zones: 82 mbbbls (MBW)

TD=10968



DRILLING PROGNOSIS

07-Jan-08

Well: Caudill West 17 Fee #2H
 Location: Sec 17, T15S-R36E
 County, State: Lea, NM
 Surface Location: 2300' FNL & 500' FEL
 Bottomhole Loc: 400' FNL & 400' FEL
 E-Mail:
 Wellhead:

Co. Well ID:
 AFE No.:
 API No.:
 Lse Serial #
 Field: Star/ Denton
 Objective: Wolfcamp
 TVD/MD: MD Vert 10,900'/MD Horizontal 12,720'/TVD Horizontal 10,621'
 Cementing:
 Mud: MI
 Motors: Black Viper - Randall Taylor - 432-561-8801
 OH Logs: No E-Logs: MWD-GR thru lateral
 Rig:
 Offset Well:

Xmas Tree
 Tubing:
 Superintendent: Dee Smith
 Engineer: Mark Audas

| Hole Size | Formation Tops | Other | Logs | Bit IADC | Cement | Mud Weight |
|-----------|---|-------|---------------------|----------|--|--------------------|
| 17 1/2" | 16" Conductor @ ±60' GL | | | | 20 bbl FW spacer Lead: 290 sk Light Premium plus w/ 0.125 lb/sk Poly-E-Flake + 1% CaCl Tail: 220 sk Premium Plus + 2% CaCl TOC @ surface | 8.5 - 8.8 ppg FW |
| 11" | 13 3/8" 48 ppf, H40, STC @ 600' Rustler @ 1997' | | | | 10 bbl FW spacer Lead: 702 sks Interfill C + .125 lb/sk Poly-E-Flake 2.45lb/sk Tail: 200 sks Premium Plus + 1% CaCl 1.33 lb/sk TOC @ surface | 10 ppg brine |
| 7 7/8" | 8 5/8" 32 ppf, J/K55, LTC @ 4500' | | | | | |
| | Glorieta @ 6596' Blinebry @ 6852' Tubb @ 7443' Drinkard @ 7697' Abo @ 8513' Wolfcamp @ 9710' Wolfcamp B @ 10046' Wolfcamp C @ 10406' | | MWD-GR thru lateral | | STAGE 1 Spacer: 10 ppg Super Flush 10' 12 bbls Lead: 412 sk Interfill H + additives 11.9 ppg 2.45 c/sk Tail: 253 sk Super H + .5% Haid-344 + .4% CFR-3 + 1bm/sk salt + 5 ln/sk Gilsonit + .125 lb/sk PolyEflake + 35% HR-7 sks 13.0 ppg 1.67 c/sk TOC 4300' Tail @ 9000' | 9-9.5 Brine 2% KCL |
| | Wolfcamp C Pay @ 10,621' | | | | | |
| | 4-3/4" hole Run three (3) stage assembly on 2 7/8", 6.50 ppf, N/L80 EUE 8rd tubing (1900' Vert sec) | | | | | |
| | Wolfcamp E 10737' | | | | | |
| | 5 1/2" 17.0 ppf, P110, LTC @ 10,900' | | | | | |

W/S @ 10,398' ~
 TOWin @ 10,400' ~
 BOWin @ 10,410' ~
 KOP @ 10,421' ~
 CIBP @ 10,415' ~

NOTES:

NU rotating head on 13-3/8". Install wellhead on 8-5/8", NU BOP (5M) w/ rotating head and test BOP to 5M w/ test unit. Test casing. Cement volumes for surface csg include a 100% excess in the open hole section. If drilling conditions deem necessary, fluid caliper hole and adjust volumes.
 Cement volumes for intermediate csg include a 70% excess in the open hole section. If drilling conditions deem necessary, fluid caliper hole and adjust volumes.
 Cement volumes for production csg include a 25% excess in the open hole section. Adjust volumes after caliper + 25% excess.

ALL INVOICES ARE TO SHOW CIMAREX ENERGY AS OPERATOR AND USE CIMAREX ACCOUNTING CODES.

