

**PAUL BACA PROFESSIONAL COURT REPORTERS**

**OIL  
CONSERVATION  
DIVISION**

**CASE #: 14193**

**EXHIBIT**

**2**



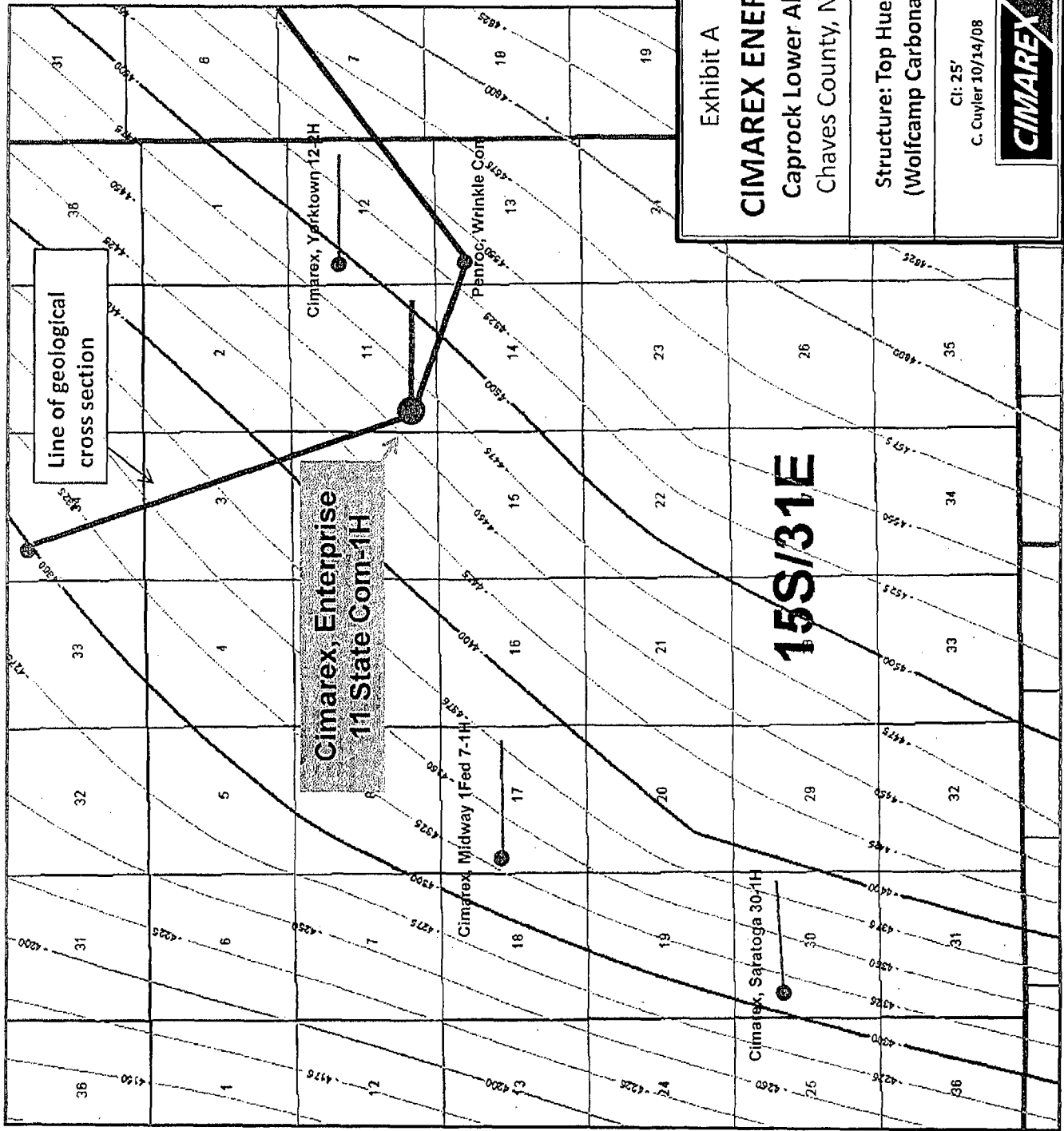


Exhibit A

**CIMAREX ENERGY**

Caprock Lower Abo,  
Chaves County, NM

Structure: Top Hueco  
(Wolfcamp Carbonate)

CI: 257  
C. Cuyler 10/14/08



**15S/31E**

EXHIBIT

A

NW

NE

30005012100000  
GULF OIL CORP  
CAPROCK UNIT

30005280020000  
CIMAREX ENERGY OF CO  
ENTERPRISE 11 STATE COM

30005210280000  
CHEVRON U S A INC  
WRINKLE1.COM

30025285170000  
MONCRIEF W A JR  
TULK STATE

30025080150000  
TEXACO INCORPORATED  
ST OF N MEX BK

Log Depth (ft)  
8200 -  
8255 -  
8310 -  
8365 -  
8420 -  
8475 -  
8530 -  
8585 -  
8640 -  
8695 -  
8750 -  
8805 -  
8860 -  
8915 -  
8970 -  
9025 -  
9080 -  
9135 -  
9190 -  
9245 -  
9300 -

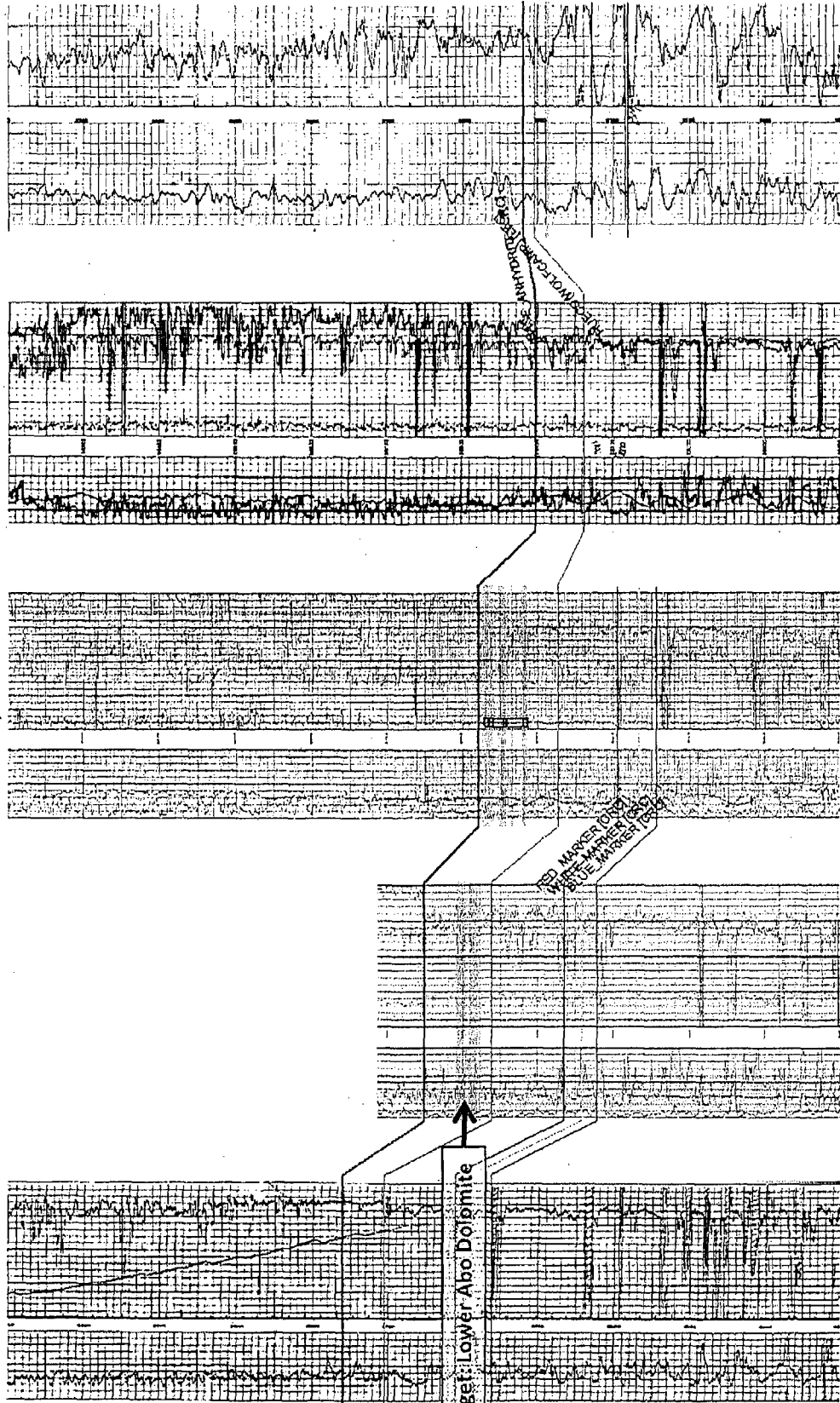
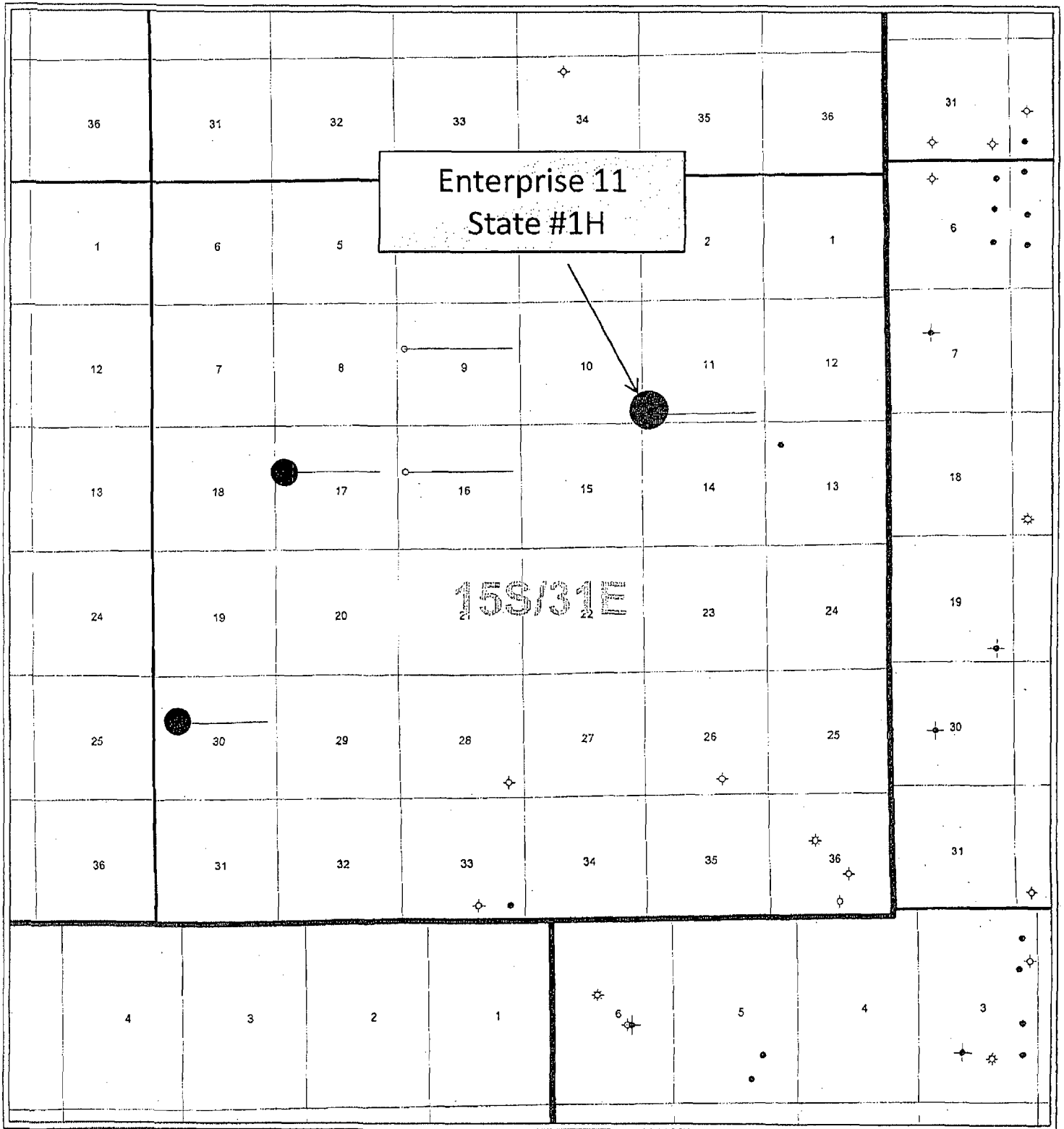


Exhibit B

EXHIBIT B



EXHIBIT

C

Exhibit C

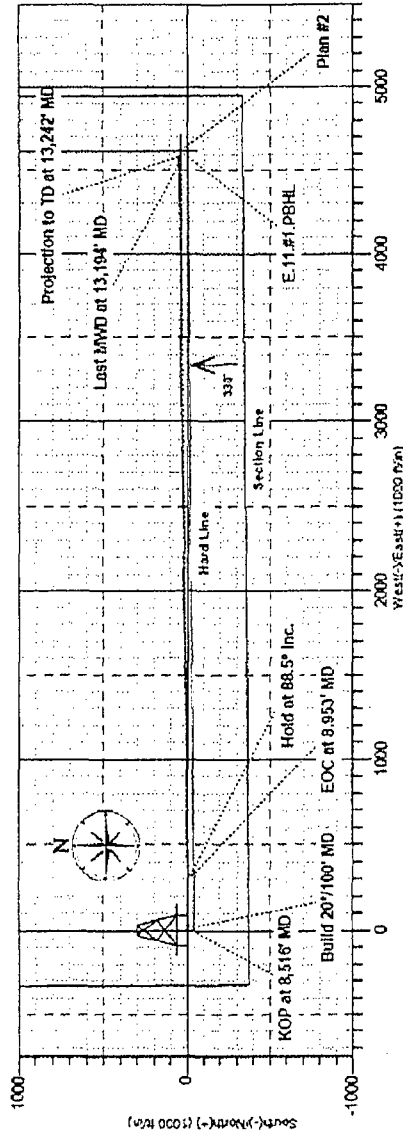
# Cimarex Energy Company

**HALLIBURTON**  
Sperry Drilling Services

Project: Chaves County, NIM  
Site: Enterprise 11 ST Com  
Well: #1  
Wellbore: ST01  
Design: ST01 (#1/ST01)  
Rig: Patriot 4

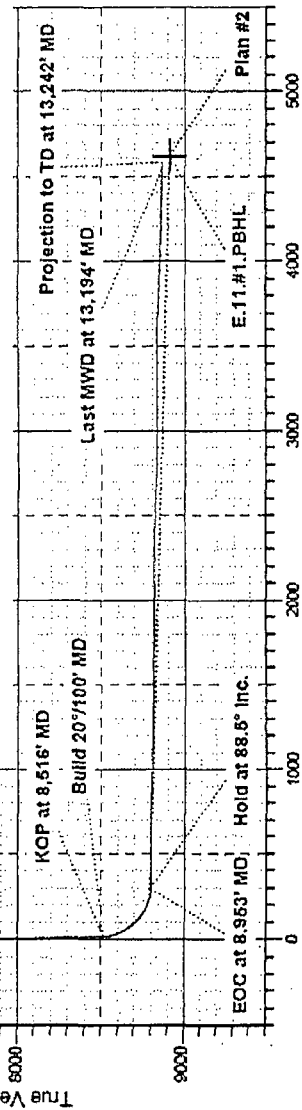


Surface Location:  
US Grid Plane 1027 (Exact solution)  
New Mexico East 3601  
Elevation: 614.395 + KB 11' @ 4406.005 (Patriot 4)  
Northing: 726927.60 Easting: 693068.60  
Longitude: 103° 1' 26.776 W  
Latitude: 33° 1' 26.776 N



### WELLBORE TARGET DETAILS (MAP CO-ORDINATES)

Name	TVD	N/S	E/W	Northing	Easting	Shape
E.11.#1.PBHL	8910.00	40.70	4817.60	730739.60	692269.20	Point



To convert a Magnetic Direction to a Grid Direction, Add 7.87°.  
Magnetic Model: BOG12007 Date: 18-May-05  
Azimuths to Grid North

Exhibit D