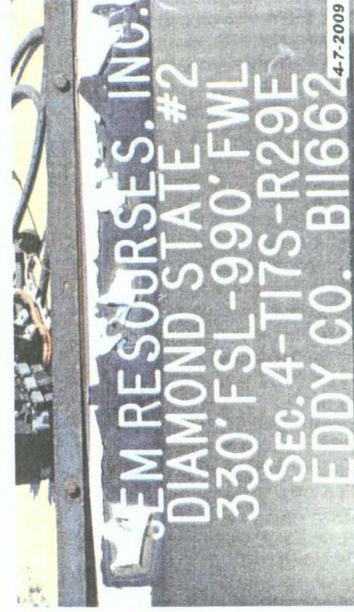
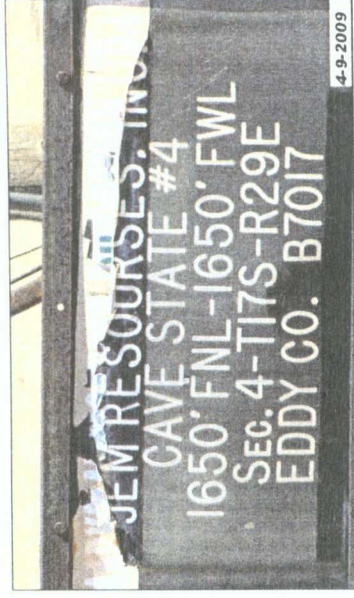


Case No. 14393 –  
OCD v. Marks & Garner

OCD Exhibit 4





DIAMOND STATE #002 30-015-24760

4-7-2009



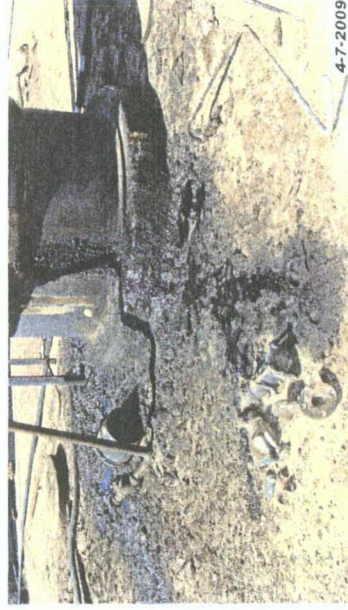
DIAMOND STATE #002 30-015-24760

4-7-2009



DIAMOND STATE #002 30-015-24760

4-7-2009



DIAMOND STATE #002 30-015-24760

4-7-2009



4-7-2009

DIAMOND STATE #002 30-015-24760



4-16-2009

LEVERS #3Y 30-015-02787



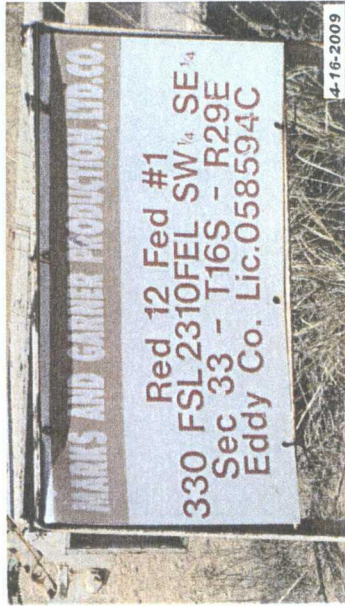
4-7-2009

DIAMOND STATE #002 30-015-24760



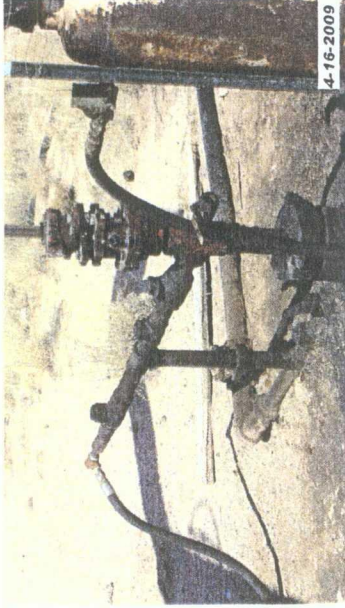
4-16-2009

LEVERS #3Y 30-015-02787



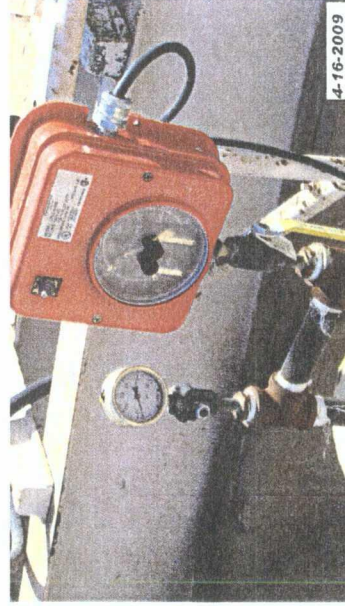
4-16-2009

RED TWELVE FEDERAL #1 30-015-25058



4-16-2009

RED TWELVE FEDERAL #1 30-015-25058



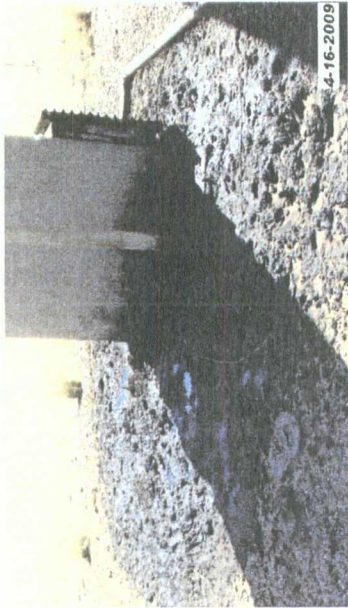
4-16-2009

RED TWELVE FEDERAL #1 30-015-25058



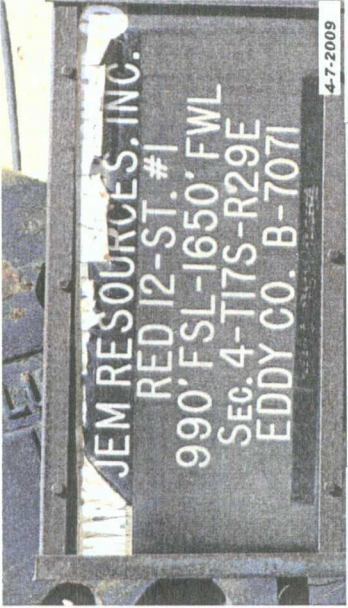
4-16-2009

RED TWELVE FEDERAL #1 30-015-25058



4-16-2009

RED TWELVE FEDERAL #1 30-015-25058



4-7-2009

RED TWELVE STATE #1 30-015-24962



4-7-2009

RED TWELVE STATE #1 30-015-24962



4-7-2009

RED TWELVE STATE #1 30-015-24962



4-7-2009

RED TWELVE STATE #1 30-015-24962



4-7-2009

RED TWELVE STATE #1 30-015-24962



4-7-2009

RED TWELVE STATE #1 30-015-24962



4-9-2009

RED TWELVE STATE #2 30-015-24966



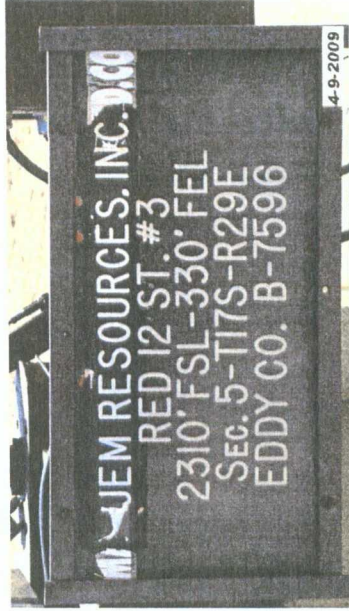
RED TWELVE STATE #2 30-015-24966



RED TWELVE STATE #2 30-015-24966



RED TWELVE STATE #2 30-015-24966



RED TWELVE STATE #3 30-015-24989



4-9-2009

RED TWELVE STATE #3 30-015-24989



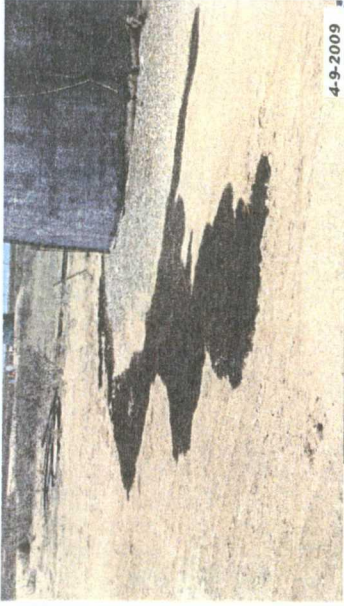
4-9-2009

RED TWELVE STATE #3 30-015-24989



4-9-2009

RED TWELVE STATE #3 30-015-24989



4-9-2009

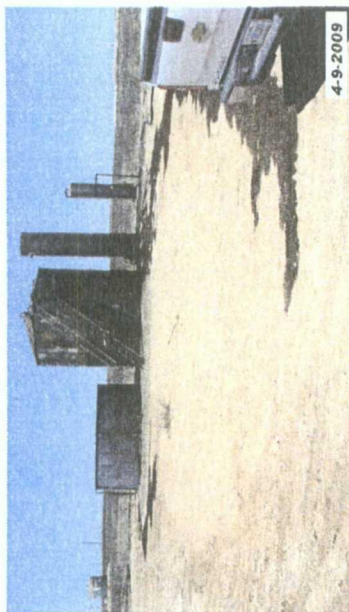
RED TWELVE STATE #3 30-015-24989





4-9-2009

RED TWELVE STATE #3 30-015-24989



4-9-2009

RED TWELVE STATE #3 30-015-24989



4-7-2009

RED TWELVE STATE #4 30-015-24991



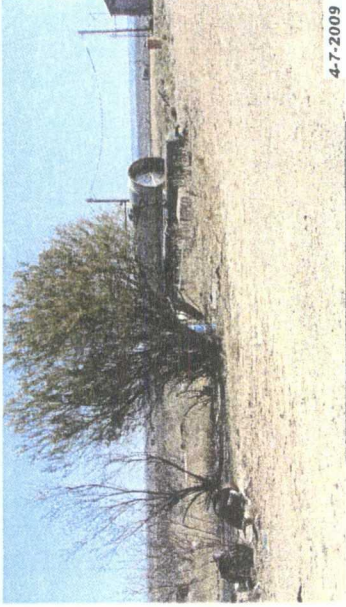
4-7-2009

RED TWELVE STATE #4 30-015-24991



4-7-2009

RED TWELVE STATE #4 30-015-24991



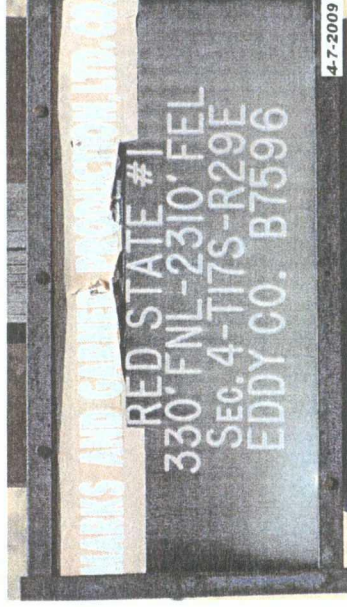
4-7-2009

RED TWELVE STATE #4 30-015-24991



4-7-2009

RED TWELVE STATE #4 30-015-24991



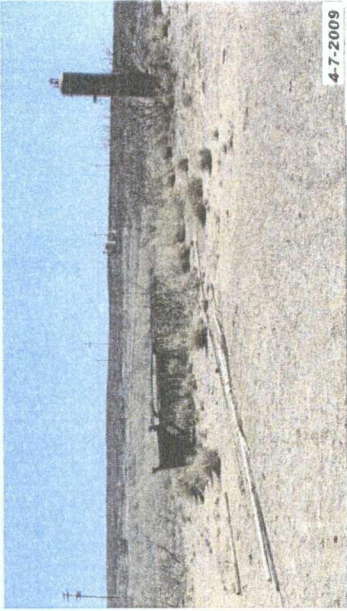
4-7-2009

RED STATE #1 30-015-24855



4-7-2009

RED STATE #1 30-015-24855



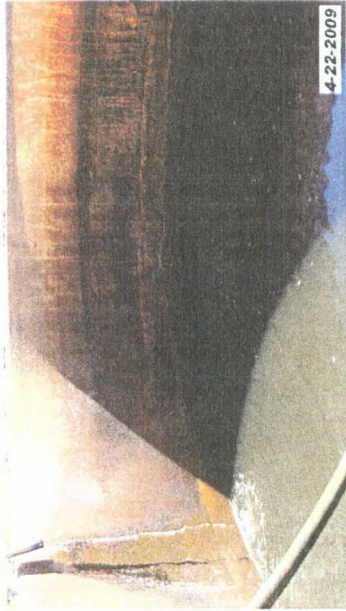
4-7-2009

RED STATE #1 30-015-24855



4-22-2009

MOSLEY SPRING 32 STATE COM 30-015-23341



4-22-2009

MOSLEY SPRING 32 STATE COM 30-015-23341



MOSLEY SPRING 32 STATE COM 30-015-23341



MOSLEY SPRING 32 STATE COM 30-015-23341



MOSLEY SPRING 32 STATE COM 30-015-23341



MOSLEY SPRING 32 STATE COM 30-015-23341



MOSLEY SPRING 32 STATE COM 30-015-23341

4-22-2009