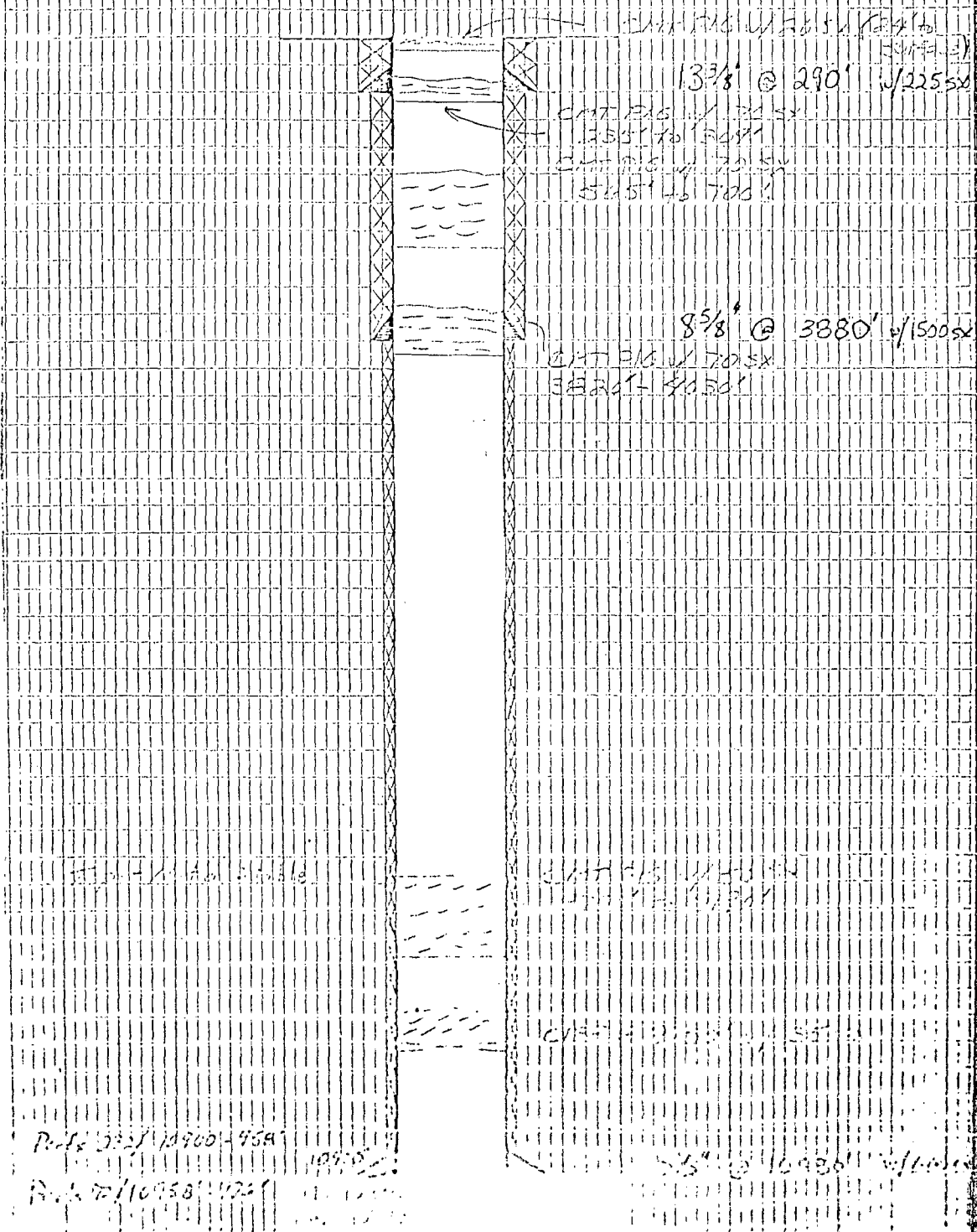


Elevation 4350' DEVIATION BIT

P 9 A

STATE BILL
CO. 1st DEPT. FUEL
SEC-2, T-12-S, R-33E
BAGLEY DEVONIAN
LEA, NEW MEXICO

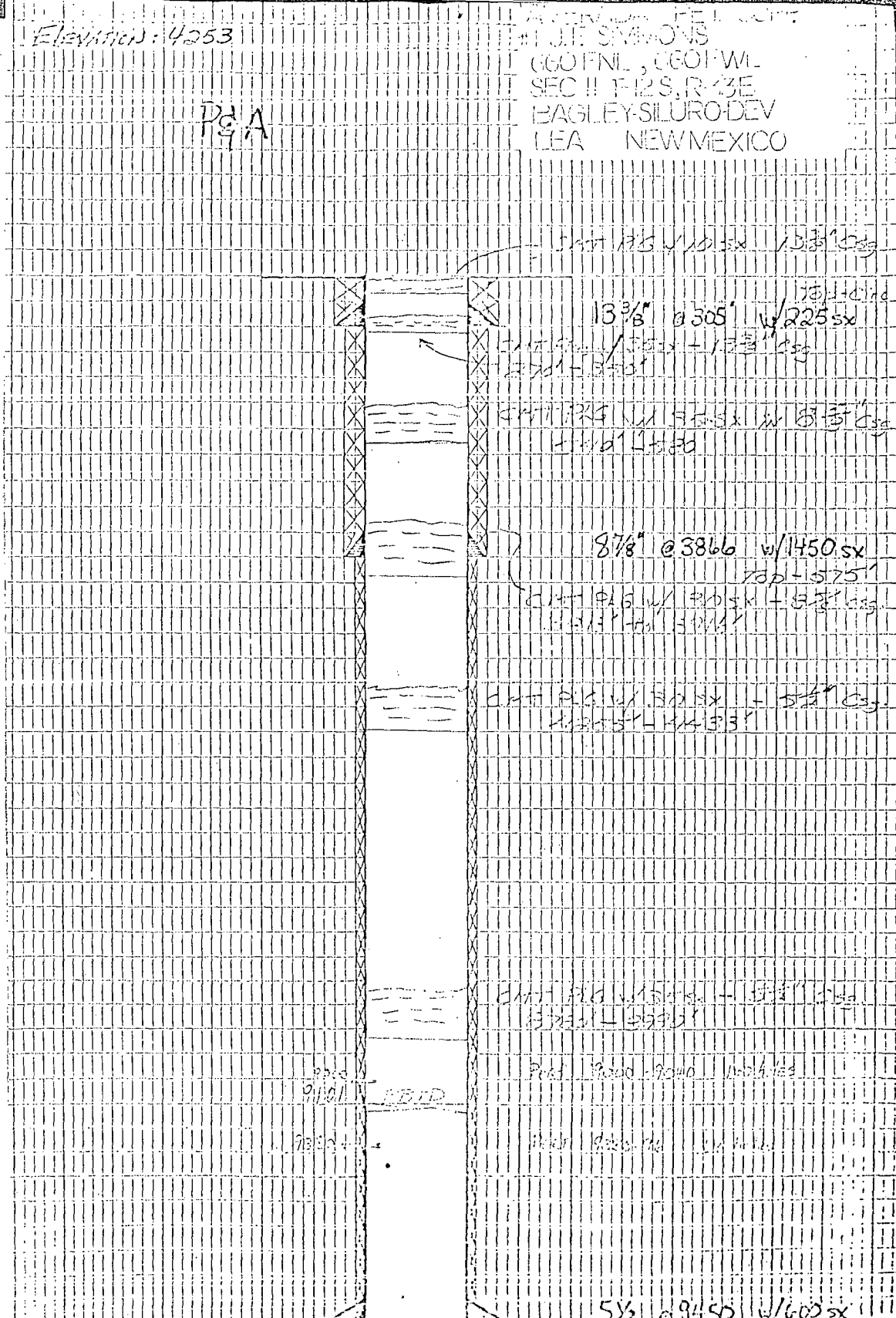


P. 12 33' / 10900-9591 10938'
 P. 12 33' / 10938' 122'1

Elevation: 4253

D&A

AGRICULTURAL
UNIT 575
660 FNL, 660 FNL
SEC II T-12 S, R-13 E
BAGLEY-SILURO-DEV
LEA NEW MEXICO



13 3/8" @ 305' w/225 sx
top - 575'

13 3/8" @ 305' w/225 sx
top - 575'

13 3/8" @ 305' w/225 sx
top - 575'

8 7/8" @ 3866 w/1450 sx
top - 575'

8 7/8" @ 3866 w/1450 sx
top - 575'

8 7/8" @ 3866 w/1450 sx
top - 575'

5 1/2" @ 9455 w/600 sx

5 1/2" @ 9455 w/600 sx

5 1/2" @ 9455 w/600 sx

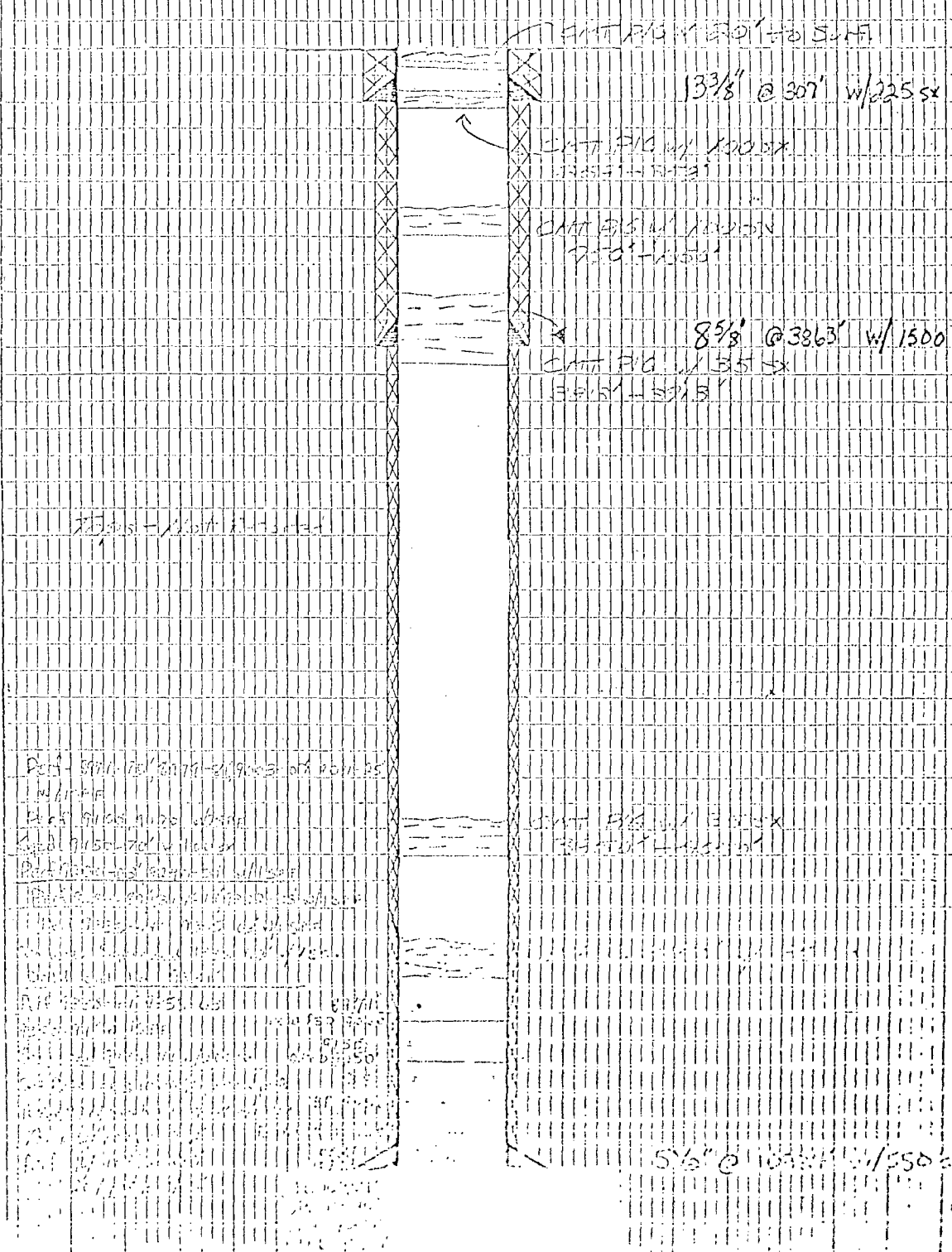
5 1/2" @ 9455 w/600 sx

FD 11046
E6D 9101

Elevation: 4254' DF

P&A

1/16" DIA. TIE RODS
MATH #RS, W.F.
1930 FNL 662 FHL
SFC. 3 T-12S, P-33-E
BACLEY PENN
LEA NEW MEXICO



CONT. P&A # 201 to 514

13 3/8" @ 30" w/225sx

CONT. P&A # 100 SX
1930 FNL 662 FHL

CONT. P&A # 100 SX
1930 FNL 662 FHL

8 5/8" @ 38 6/3" w/1500

CONT. P&A # 155 SX
1930 FNL 662 FHL

CONT. P&A # 100 SX
1930 FNL 662 FHL

Part - 5/16" dia. tie rods on 30" centers
w/10' spacing
Part - 5/16" dia. tie rods on 30" centers
w/10' spacing
Part - 5/16" dia. tie rods on 30" centers
w/10' spacing
Part - 5/16" dia. tie rods on 30" centers
w/10' spacing

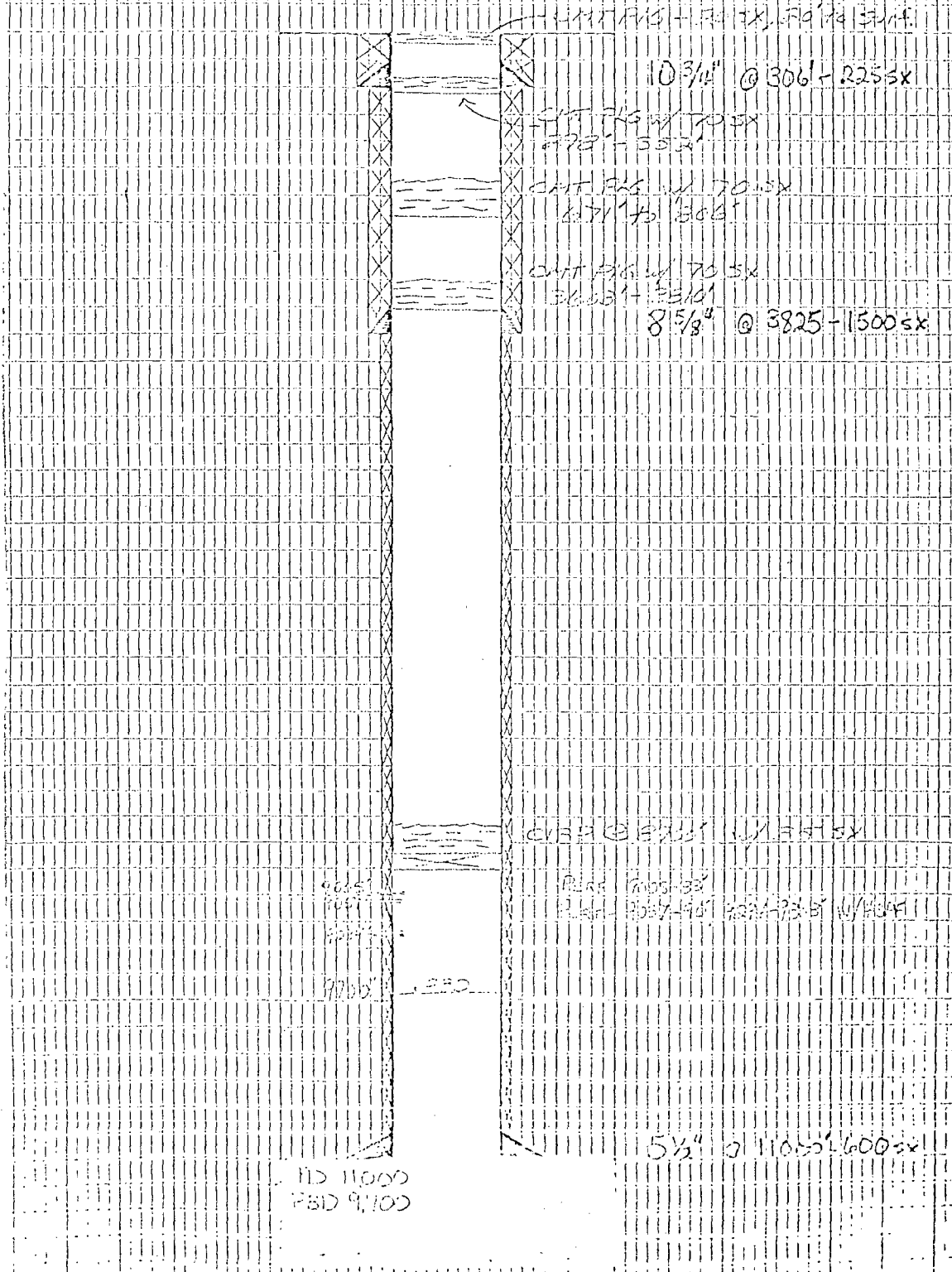
CONT. P&A # 155 SX
1930 FNL 662 FHL

5 1/2" @ 100" w/1500

Elevations: 11249 OF

PGA

ARIZONA
WD-2 BAGLEY TWD
C60 FNL 1500 FVL
SEC II TID S. R-334E
BAGLEY
TFA NEW MEXICO



411 R15 + R17X, Flg 1/2 5/16"

10 3/4" @ 306 - R25 SX

CUT R15 W/ 70 SX
R25 - 55 SX

CUT R15 W/ 70 SX
R25 - 55 SX

CUT R15 W/ 70 SX
R25 - 55 SX

8 5/8" @ 3825 - 1500 SX

CUT R15 W/ 70 SX
R25 - 55 SX

PLATE 700-33
PLATE 700-33

TID 11000
PBD 9700

5 1/2" @ 11000 - 600 SX