

Form 3160-3
(November 1983)
(formerly 9-331C)

NM OIL COMMISSION
Artesia, NM 88213
UNITED STATES
DEPARTMENT OF THE INTERIOR
BUREAU OF LAND MANAGEMENT

SUBMIT IN TRIPLICATE
(Other instructions on reverse side)

30-015-26809
Form approved,
Budget Bureau No. 1004-0136
Expires August 31, 1985

APPLICATION FOR PERMIT TO DRILL, DEEPEN, OR PLUG BACK

1a. TYPE OF WORK DRILL <input checked="" type="checkbox"/> DEEPEN <input type="checkbox"/> PLUG BACK <input type="checkbox"/>			5. LEASE DESIGNATION AND SERIAL NO. NM-76938	
b. TYPE OF WELL OIL WELL <input checked="" type="checkbox"/> GAS WELL <input type="checkbox"/> OTHER <input type="checkbox"/>			6. IF INDIAN, ALLOTTEE OR TRIBE NAME	
2. NAME OF OPERATOR Yates Petroleum Corporation			7. UNIT AGREEMENT NAME	
3. ADDRESS OF OPERATOR 105 South Fourth Street, Artesia, NM 88210			8. NAME OF LEASE NAME Staghorn "AJG" Fed Com	
4. LOCATION OF WELL (Report location clearly and in accordance with any State requirements) At surface 660' FSL & 660' FSL			9. WELL NO. 1	
14. DISTANCE IN MILES AND DIRECTION FROM NEAREST TOWN OR POST OFFICE Approximately 32 miles southwest of Artesia			10. FIELD AND POOL, OR WILDCAT So. Dagger Draw Upper Pe	
15. DISTANCE FROM PROPOSED LOCATION TO NEAREST PROPERTY OR LEASE LINE, FT. (Also to nearest drlg. unit line, if any) 660'			11. SEC. T. R. W., OR BLK. AND SURVEY OR AREA Sec. 25-T20S-R24E	
16. NO. OF ACRES IN LEASE			12. COUNTY OR PARISH Eddy	
17. NO. OF ACRES ASSIGNED TO THIS WELL			13. STATE NM	
18. DISTANCE FROM PROPOSED LOCATION TO NEAREST WELL, DRILLING, COMPLETED, OR APPLIED FOR, ON THIS LEASE, FT. 3200'			14. COUNTY OR PARISH Eddy	
19. PROPOSED DEPTH 3200'			15. STATE NM	
20. ROTARY OR CABLE TOOLS Rotary			16. COUNTY OR PARISH Eddy	
21. ELEVATIONS (Show whether DF, RT, GR, etc.) 3628'			17. STATE NM	
22. APPROX. DATE WORK WILL START ASAP			18. COUNTY OR PARISH Eddy	

PROPOSED CASING AND CEMENTING PROGRAM				
SIZE OF HOLE	SIZE OF CASING	WEIGHT PER FOOT	SETTING DEPTH	QUANTITY OF CEMENT
14 3/4"	9 5/8"	36# J-55	1200'	1100 sacks (circulated)
8 3/4"	7"	23-26#	TD	As warranted
		J-55 & N-80		

Yates Petroleum Corporation proposes to drill and test the Canyon and intermediate formations. Approximately 1200' of surface casing will be set and cement circulated to shut off gravel and cavings. If commercial, production casing will be run and cemented, will perforate and stimulate as needed for production.

MUD PROGRAM: FW gel/LCM to 1200'; FW to 5000'; cut Brine to 7200'; SW gel/Stach to TD.

BOP PROGRAM: BOP's and hydrill will be installed on 9 5/8" casing and tested daily.

Post ID-1
8-16-91
Nursing & API

IN ABOVE SPACE DESCRIBE PROPOSED PROGRAM: If proposal is to deepen or plug back, give data on present productive zone and proposed new productive zone. If proposal is to drill or deepen directionally, give pertinent data on subsurface locations and measured and true vertical depths. Give blowout preventer program, if any.

24. SIGNED [Signature] TITLE Landman DATE 7-17-91
(This space for Federal or State office use)

PERMIT NO. APPROVAL DATE
Orig. Signed by Richard A. Starnes
APPROVED BY [Signature] TITLE AREA MANAGER
DATE 8-12-91

APPROVAL SUBJECT TO
GENERAL REQUIREMENTS AND
SPECIAL STIPULATIONS

*See Instructions On Reverse Side

ATTACHED
Title 18 U.S.C. Section 1001, makes it a crime for any person knowingly and willfully to make to any department or agency of the United States any false, fictitious or fraudulent statements or representations as to any matter within its jurisdiction.

Submit to Appropriate
District Office
State Lease - 4 copies
Fee Lease - 3 copies

State of New Mexico
Energy, Minerals and Natural Resources Department

Form C-102
Revised 1-1-89

OIL CONSERVATION DIVISION

P.O. Box 2088
Santa Fe, New Mexico 87504-2088

DISTRICT I
P.O. Box 1980, Hobbs, NM 88240

DISTRICT II
P.O. Drawer DD, Artesia, NM 88210

DISTRICT III
1000 Rio Brazos Rd., Aztec, NM 87410

WELL LOCATION AND ACREAGE DEDICATION PLAT

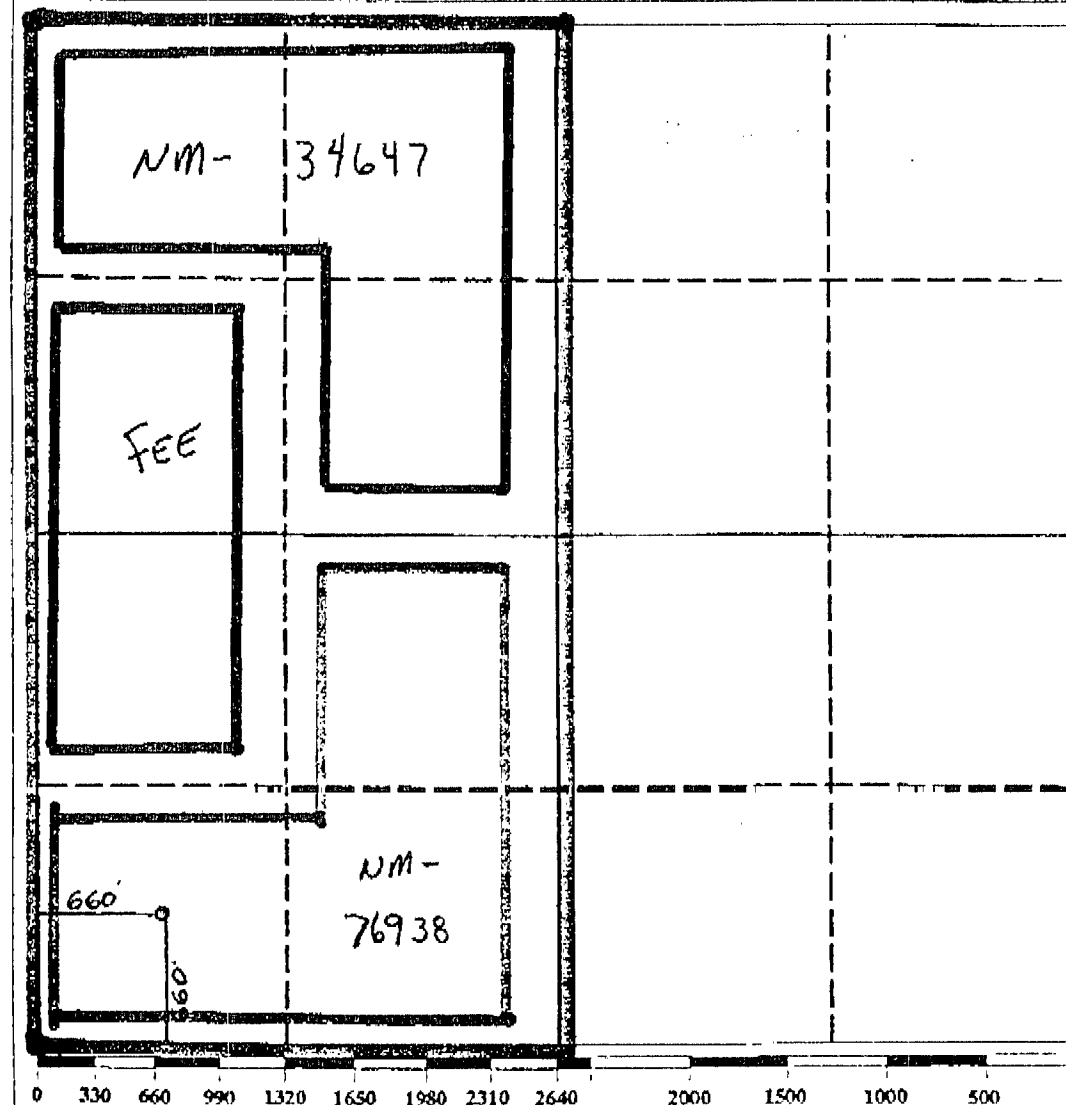
All Distances must be from the outer boundaries of the section

Operator YATES PETROLEUM CORPORATION			Lease STAGHORN AJG FEDERAL COM			Well No. 1		
Unit Letter M	Section 25	Township 20 SOUTH	Range 24 EAST	County NMCM	EDDY COUNTY, N.M.			
Actual Footage Location of Well: 660 feet from the SOUTH line and 660 feet from the WEST line								
Ground level Elev. 3628.	Producing Formation Cisco - Canyon			Pool S. Dagger Draw Upper Penn	Dedicated Acreage: 320 Acres			

- Outline the acreage dedicated to the subject well by colored pencil or hatchure marks on the plat below.
- If more than one lease is dedicated to the well, outline each and identify the ownership thereof (both as to working interest and royalty).
- If more than one lease of different ownership is dedicated to the well, have the interest of all owners been consolidated by communitization, unitization, force-pooling, etc.?

☒ Yes ☐ No If answer is "yes" type of consolidation Communitization
If answer is "no" list the owners and tract descriptions which have actually been consolidated. (Use reverse side of this form if necessary.)

No allowable will be assigned to the well until all interests have been consolidated (by communitization, unitization, forced-pooling, or otherwise) or until a non-standard unit, eliminating such interest, has been approved by the Division.



OPERATOR CERTIFICATION

I hereby certify that the information contained herein is true and complete to the best of my knowledge and belief.

Signature Ken Beardsley

Printed Name Ken Beardsley

Position Landman

Company Yates Pet. Corp.

Date 7-17-91

SURVEYOR CERTIFICATION

I hereby certify that the well location shown on this plat was plotted from field notes of actual surveys made by me or under my supervision, and that the same is true and correct to the best of my knowledge and belief.

Date Surveyed JULY 8, 1991

Signature of Professional Surveyor [Signature]

