



DRILLING PROGNOSIS
 Cimarex Energy Company

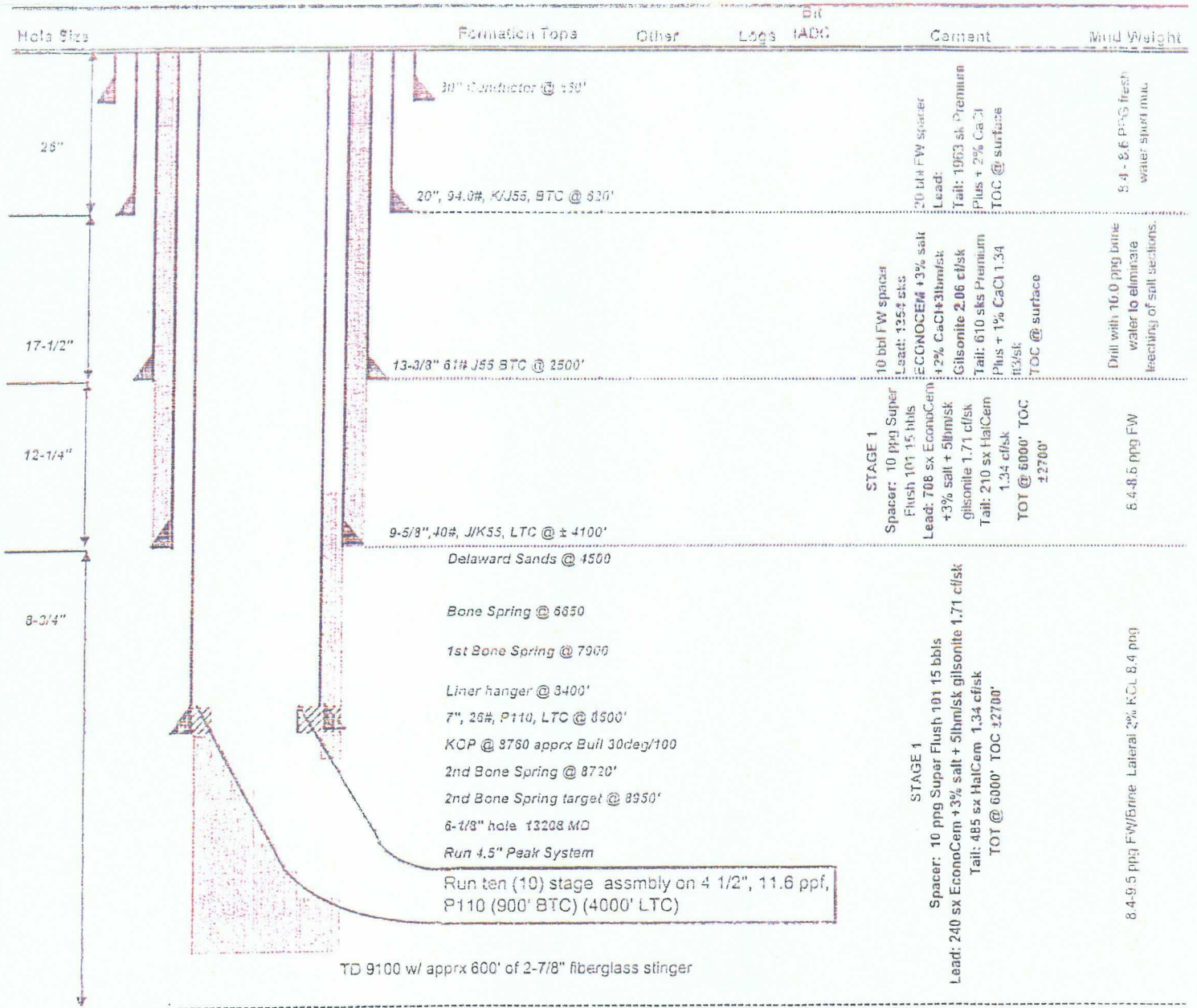
01/06/10

Well: Pannx Pinchar 21 Pad #1H
 Location: Sen 21, 190-310
 County, State: Eddy County, NM
 Surface Location: 860 FWL, 990 FWL
 Bottomhole Log: 300 FAL, 300 FWL
 E-mail:
 Wellhead:

Lea Permit #:
 Field:
 Objective: 2nd Bone Spring SS
 TVD/MD: 9000 / 13200'
 Cementing: horizontal
 Mud:
 MUDLOG:
 CIP Logs:
 Rig: Key 080
 Cased Wells:

OCC Case No. 14418
CIMAREX ENERGY
Exhibit # 15

Annals Title:
 Tubing: 2 7/8" L90 EUE
 Superintendent: Jim Evans
 Engineer: Ryan Braxton



NOTES:

Drill to 9100'. Set 8500' 7" csg w/ -600' 2-7/8" fiberglass log. Drill out w/ 6-1/8" bit to KOP at 8760' and drill curve at 30deg/100', landing at 8950'. Drill to TD at 10205'.