

Synthetic at Bell Lake  
Unit 6 well



# SYNTHETIC TIE

## BELL LAKE UNIT 6 WELL

L400

A/C-06

3-D SEISMIC

FAULT B

2000

2000

Lower Moccaw

Burnett Shale

Mississippian Lime

Woodford Shale

Devonian

354BRNT

359MPLM

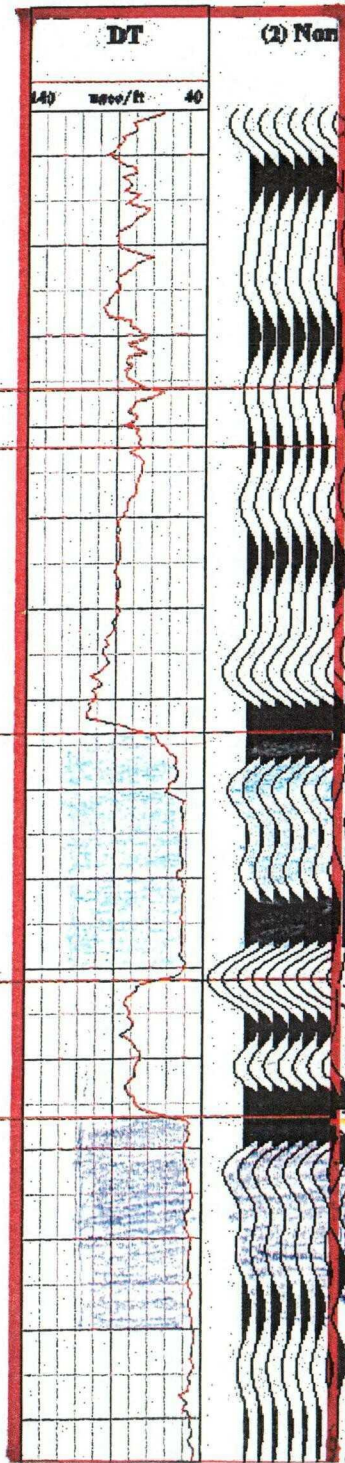
319WDFSH

300DVNT

MISSISSIPPIAN  
LIME

WOODFORD  
SHALE

DEVONIAN



BEFORE THE  
OIL CONSERVATION DIVISION  
Case 13085 Exhibit No. **8**  
Submitted By:  
Devon Energy Production Co.  
Hearing Date: October 2, 2003