

Oil Conservation Division
1220 S. St Francis Dr.
Santa Fe, NM 87505

APPLICATION FOR PERMIT TO DRILL, RE-ENTER, DEEPEN, PLUGBACK, OR ADD A ZONE

1. Operator Name and Address EOG RESOURCES INC P.O. Box 2267 Midland, TX 79702		2. OGRID Number 7377
		3. API Number 30-015-37208
4. Property Code 37772	5. Property Name PARKWAY 25 STATE	6. Well No. 004H

7. Surface Location

UL - Lot	Section	Township	Range	Lot Idn	Feet From	N S Line	Feet From	E W Line	County
M	23	19S	29E	M	660	S	200	W	EDDY

8. Pool Information

TURKEY TRACK BONE SPRING	60660
--------------------------	-------

Additional Well Information

9. Work Type New Well	10. Well Type OIL	11. Cable Rotary	12. Lease Type State	13. Ground Level Elevation 3279
14. Multiple N	15. Proposed Depth 8400	16. Formation Bone Spring	17. Contractor	18. Spud Date
Depth to Ground water		Distance from nearest fresh water well		Distance to nearest surface water
Pit: Liner: Synthetic <input type="checkbox"/> mils thick Clay <input type="checkbox"/> Pit Volume: bbls Drilling Method: Closed Loop System <input type="checkbox"/> Fresh Water <input checked="" type="checkbox"/> Brine <input type="checkbox"/> Diesel Oil-based <input type="checkbox"/> Gas/Air <input type="checkbox"/>				

19. Proposed Casing and Cement Program

Type	Hole Size	Casing Type	Casing Weight ft	Setting Depth	Sacks of Cement	Estimated TOC
Surf	14.75	11.75	42	360	500	0
Int1	11	8.625	32	3300	850	0
Prod	7.875	5.5	17	12627	1750	2800

Casing/Cement Program: Additional Comments

--

Proposed Blowout Prevention Program

Type	Working Pressure	Test Pressure	Manufacturer
DoubleRam	3000	3000	

I hereby certify that the information given above is true and complete to the best of my knowledge and belief. I further certify that the drilling pit will be constructed according to NMOCDD guidelines <input type="checkbox"/> a general permit <input type="checkbox"/> or an (attached) alternative OCD-approved plan <input type="checkbox"/> .	OIL CONSERVATION DIVISION	
	Approved By: Jacqueta Reeves	
	Title: District Geologist	
	Approved Date: 8/7/2009	Expiration Date: 8/7/2011
	Printed Name: Electronically filed by Donny Glanton	
Title: Sr. Lease Operations Rep		
Email Address: donny_glanton@eogresources.com		
Date: 7/29/2009 Phone: 432-686-3642		

District I

1425 N. French Dr., Hobbs, NM 88240
 Phone:(505) 393-8161 Fax:(505) 393-0720

District II

1301 W. Grand Ave., Artesia, NM 88210
 Phone:(505) 748-1283 Fax:(505) 748-9720

District III

1500 Rio Brazos Rd., Aztec, NM 87410
 Phone:(505) 334-6178 Fax:(505) 334-6170

District IV

1220 S. St Francis Dr., Santa Fe, NM 87505
 Phone:(505) 476-3470 Fax:(505) 476-3462

State of New Mexico
Energy, Minerals and Natural Resources

Form C-102
 Permit 99621

Oil Conservation Division
1220 S. St Francis Dr.
Santa Fe, NM 87505

WELL LOCATION AND ACREAGE DEDICATION PLAT

1. API Number 30-015-37208	2. Pool Code 60660	3. Pool Name TURKEY TRACK BONE SPRING
4. Property Code 37772	5. Property Name PARKWAY 23 STATE	6. Well No. 004H
7. OGRID No. 7377	8. Operator Name EOG RESOURCES INC	9. Elevation 3279

10. Surface Location

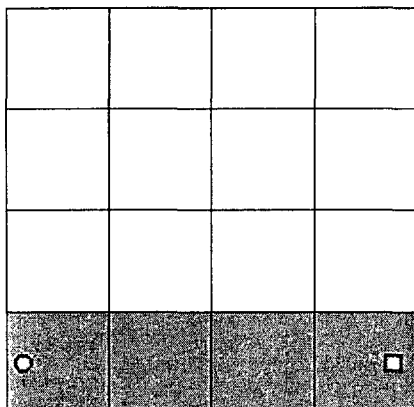
UL - Lot M	Section 23	Township 19S	Range 29E	Lot Idn. P	Feet From 660	N/S Line S	Feet From 200	E/W Line W	County EDDY
---------------	---------------	-----------------	--------------	---------------	------------------	---------------	------------------	---------------	----------------

11. Bottom Hole Location If Different From Surface

UL - Lot P	Section 23	Township 19S	Range 29E	Lot Idn. P	Feet From 660	N/S Line S	Feet From 330	E/W Line E	County EDDY
---------------	---------------	-----------------	--------------	---------------	------------------	---------------	------------------	---------------	----------------

12. Dedicated Acres 160.00	13. Joint or Infill	14. Consolidation Code	15. Order No.
-------------------------------	---------------------	------------------------	---------------

NO ALLOWABLE WILL BE ASSIGNED TO THIS COMPLETION UNTIL ALL INTERESTS HAVE BEEN CONSOLIDATED OR A NON-STANDARD UNIT HAS BEEN APPROVED BY THE DIVISION

**OPERATOR CERTIFICATION**

I hereby certify that the information contained herein is true and complete to the best of my knowledge and belief, and that this organization either owns a working interest or unleased mineral interest in the land including the proposed bottom hole location(s) or has a right to drill this well at this location pursuant to a contract with an owner of such a mineral or working interest, or to a voluntary pooling agreement or a compulsory pooling order heretofore entered by the division.

E-Signed By: Donny Glanton
 Title: Sr. Lease Operations Rep
 Date: 7/29/2009

SURVEYOR CERTIFICATION

I hereby certify that the well location shown on this plat was plotted from field notes of actual surveys made by me or under my supervision, and that the same is true and correct to the best of my belief.

Surveyed By: Terry Asel
 Date of Survey: 6/25/2009
 Certificate Number: 15079

AUG - 5 2009

District I
1625 N. French Dr., Hobbs, NM 88240
District II
1301 W. Grand Avenue, Artesia, NM 88210
District III
1000 Rio Brazos Rd., Aztec, NM 87410
District IV
1220 S. St. Francis Dr., Santa Fe, NM 87505

State of New Mexico
Energy, Minerals & Natural Resources Department
OIL CONSERVATION DIVISION
1220 South St. Francis Dr.
Santa Fe, NM 87505

Form C-102
Revised October 12, 2005
Submit to Appropriate District Office
State Lease- 4 Copies
Fee Lease- 3 Copies

☐ AMENDED REPORT

WELL LOCATION AND ACREAGE DEDICATION PLAT

API Number 30-015-37208	Pool Code 60660	Pool Name Turkey Track; Bone Spring
Property Code 37772	Property Name PARKWAY 23 STATE	Well Number 4H
OGRID No. 7377	Operator Name EOG RESOURCES, INC.	Elevation 3278.6'

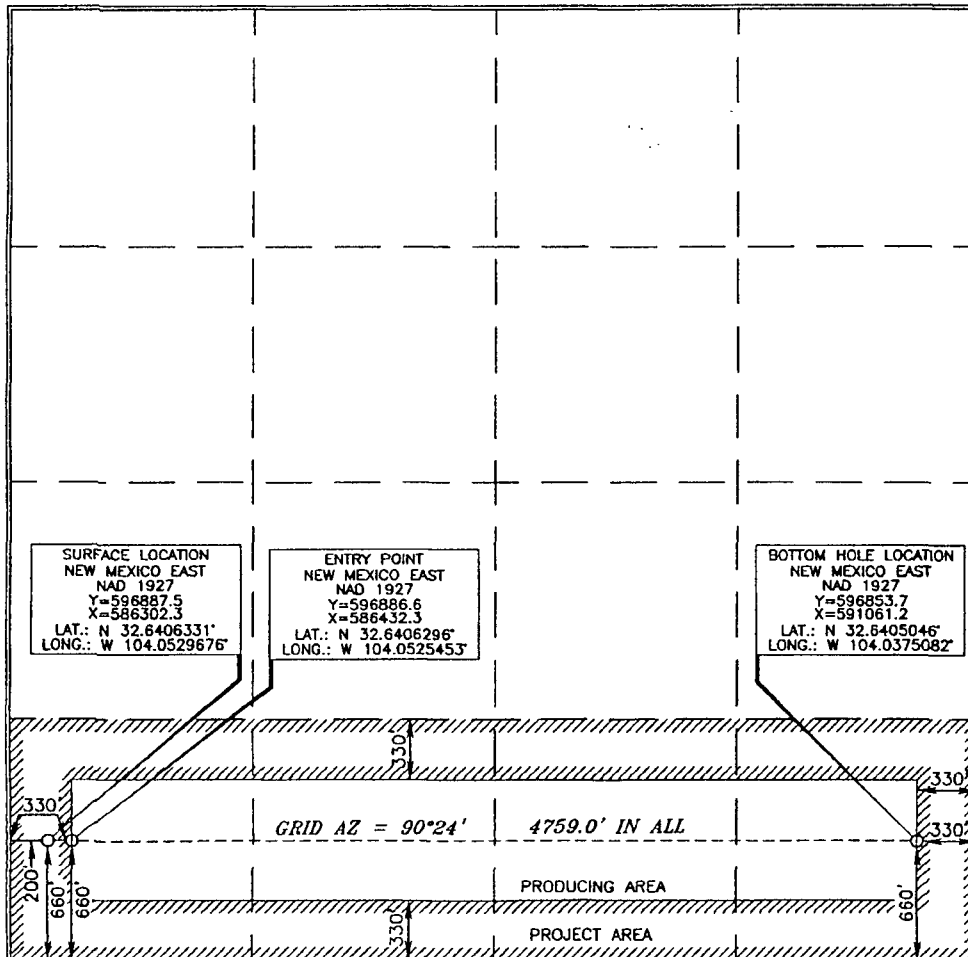
Surface Location

UL or lot no.	Section	Township	Range	Lot Idn	Feet from the	North/South line	Feet from the	East/West line	County
M	23	19 SOUTH	29 EAST, N.M.P.M.		660	SOUTH	200	WEST	EDDY

Bottom Hole Location If Different From Surface

UL or lot no.	Section	Township	Range	Lot Idn	Feet from the	North/South line	Feet from the	East/West line	County
P	23	19 SOUTH	29 EAST, N.M.P.M.		660	SOUTH	330	EAST	EDDY
Dedicated Acres 160		Joint or Infill	Consolidation Code	Order No.					

No allowable will be assigned to this completion until all interests have been consolidated or a non-standard unit has been approved by the division.



OPERATOR CERTIFICATION

I hereby certify that the information contained herein is true and complete to the best of my knowledge and belief, and that this organization either owns a working interest or unleased mineral interest in the land including the proposed bottom hole location or has a right to drill this well at this location pursuant to a contract with an owner of such a mineral or working interest, or to a voluntary pooling agreement or a compulsory pooling order heretofore entered by the division.

Don J. M... 7/29/09
Signature Date

Donny G. Glanton
Printed Name

SURVEYOR CERTIFICATION

I hereby certify that the well location shown on this plat was plotted from field notes or actual survey made by me or under my supervision and that the same is true and correct to the best of my belief.

Jerry D. ... 7/2/2009
Date of Survey

Jerry D. ...
Signature and Seal of Professional Land Surveyor

Jerry D. ... 7/2/2009
Certificate Number 15079

WO# 090625WL-c (KA)