



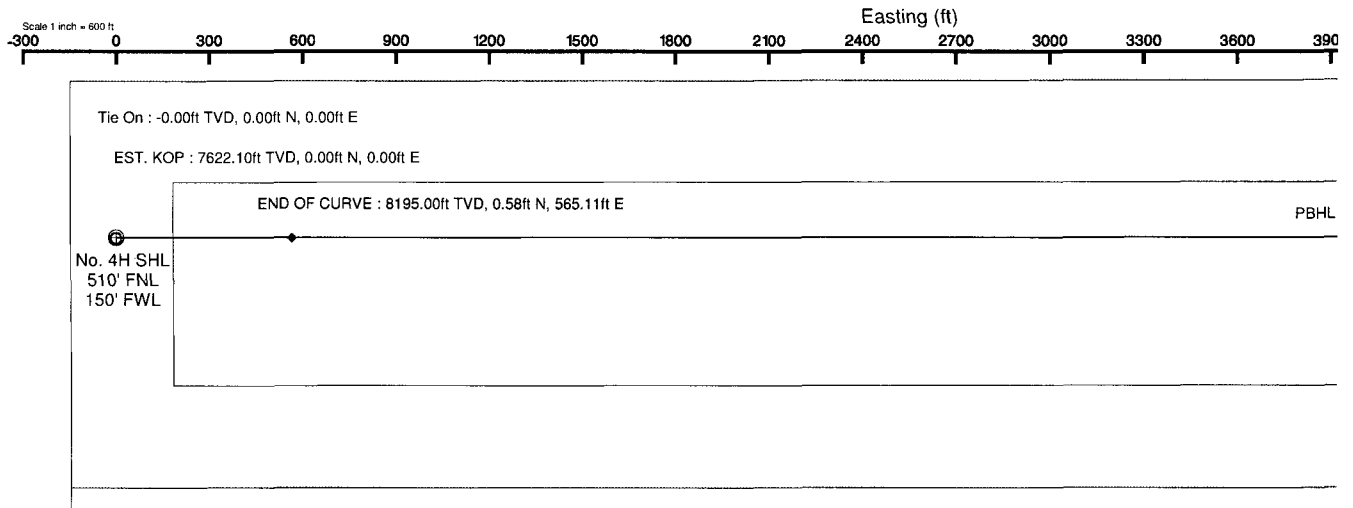
Mewbourne Oil Comp

Location: Eddy County, NM
Field: (Bradley) Sec 29, T18S, R30E
Facility: Bradley 29 Fed Com No. 4H

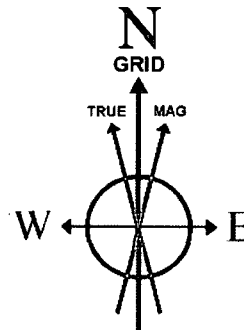
Slot:
Well:
Wellbore:

Well Profile Data

Design Comment	MD (ft)	Inc (°)	Az (°)	TVD (ft)	Local N (ft)	Local E (ft)
Tie On	0.00	0.000	89.941	0.00	0.00	0.00
EST. KOP	7622.10	0.000	89.941	7622.10	0.00	0.00
END OF CURVE	8514.25	89.215	89.941	8195.00	0.58	565.11
PBHL	12750.08	89.215	89.941	8253.00	4.95	4800.54



Oil Conservation Division
Case No. 8
Exhibit No. 8



BGGM (1945.0 to 2011.0) Dip: 60.61° Field: 49002.6 nT
 Magnetic North is 7.94 degrees East of True North (at 10/22/2010)
 Grid North is 0.18 degrees East of True North
 To correct azimuth from True to Grid subtract 0.18 degrees
 To correct azimuth from Magnetic to Grid add 7.76 degrees
 For example: if the Magnetic North Azimuth = 90 degs, then the Grid North Azimuth = 90 + 7.76

Plot reference wellpath is Prelim_1	Grid System: NAD27 / TM New Mexico State Plane:
True vertical depths are referenced to Rig on No. 4H SHL (RT)	North Reference: Grid north
Measured depths are referenced to Rig on No. 4H SHL (RT)	Scale: True distance
Rig on No. 4H SHL (RT) to Mean Sea Level: 3478 feet	Depths are in feet
Mean Sea Level to Mud line (Facility: Bradley 29 Fed Com No. 4H): -3460 feet	Created by: Victor Hernandez on 10/22/2010
Coordinates are in feet referenced to Slot	

Planned Wellpath Report

 Mewbourne Oil Company

Prelim_1
Page 1 of 4



REFERENCE WELLPATH IDENTIFICATION

Operator	Mewbourne Oil Company	Slot	No. 4H SHL
Area	Eddy County, NM	Well	No. 4H
Field	(Bradley) Sec 29, T18S, R30E	Wellbore	No. 4H PWB
Facility	Bradley 29 Fed Com No. 4H		

REPORT SETUP INFORMATION

Projection System	NAD27 / TM New Mexico State Planes, Eastern Zone (3001), US feet	Software System	WellArchitect® 2.0
North Reference	Grid	User	Victor Hernandez
Scale	0.999921	Report Generated	10/22/2010 at 10:54:51 AM
Convergence at slot	0.18° East	Database/Source file	WA_Midland/No._4H_PWB.xml

WELLPATH LOCATION

	Local coordinates		Grid coordinates		Geographic coordinates	
	North[ft]	East[ft]	Easting[USft]	Northing[USft]	Latitude	Longitude
Slot Location	0.00	0.00	601983.05	627343.70	32°43'27.211"N	104°00'06.185"W
Facility Reference Pt			601983.05	627343.70	32°43'27.211"N	104°00'06.185"W
Field Reference Pt			605219.71	623628.40	32°42'50.345"N	103°59'28.437"W

WELLPATH DATUM

Calculation method	Minimum curvature	Rig on No. 4H SHL (RT) to Facility Vertical Datum	18.00ft
Horizontal Reference Pt	Slot	Rig on No. 4H SHL (RT) to Mean Sea Level	3478.00ft
Vertical Reference Pt	Rig on No. 4H SHL (RT)	Facility Vertical Datum to Mud Line (Facility)	0.00ft
MD Reference Pt	Rig on No. 4H SHL (RT)	Section Origin	N 0.00, E 0.00 ft
Field Vertical Reference	Mean Sea Level	Section Azimuth	89.94°

Planned Wellpath Report

 Mewbourne Oil Company

Prelim 1
Page 2 of 4



REFERENCE WELLPATH IDENTIFICATION

Operator	Mewbourne Oil Company	Slot	No. 4H SHL
Area	Eddy County, NM	Well	No. 4H
Field	(Bradley) Sec 29, T18S, R30E	Wellbore	No. 4H PWB
Facility	Bradley 29 Fed Com No. 4H		

WELLPATH DATA (55 stations) † = interpolated/extrapolated station

MD [ft]	Inclination [°]	Azimuth [°]	TVD [ft]	Vert Sect [ft]	North [ft]	East [ft]	Grid East [srv ft]	Grid North [srv ft]	Latitude	Longitude	DLS [°/100ft]	Comments
0.00	0.000	89.941	0.00	0.00	0.00	0.00	601983.05	627343.70	32°43'27.211"N	104°00'06.185"W	0.00	Tie On
7622.10	0.000	89.941	7622.10	0.00	0.00	0.00	601983.05	627343.70	32°43'27.211"N	104°00'06.185"W	0.00	EST. KOP
7722.10†	10.000	89.941	7721.59	8.70	0.01	8.70	601991.76	627343.71	32°43'27.211"N	104°00'06.083"W	10.00	
7822.10†	20.000	89.941	7818.06	34.55	0.04	34.55	602017.60	627343.73	32°43'27.211"N	104°00'05.780"W	10.00	
7922.10†	30.000	89.941	7908.58	76.76	0.08	76.76	602059.81	627343.78	32°43'27.210"N	104°00'05.286"W	10.00	
8022.10†	40.000	89.941	7990.39	134.05	0.14	134.05	602117.09	627343.84	32°43'27.209"N	104°00'04.616"W	10.00	
8122.10†	50.000	89.941	8061.01	204.67	0.21	204.67	602187.70	627343.91	32°43'27.207"N	104°00'03.789"W	10.00	
8222.10†	60.000	89.941	8118.30	286.48	0.30	286.48	602269.51	627343.99	32°43'27.205"N	104°00'02.831"W	10.00	
8322.10†	70.000	89.941	8160.50	376.99	0.39	376.99	602360.02	627344.09	32°43'27.204"N	104°00'01.772"W	10.00	
8422.10†	80.000	89.941	8186.35	473.46	0.49	473.46	602456.48	627344.19	32°43'27.202"N	104°00'00.643"W	10.00	
8514.25	89.215	89.941	8195.00	565.11	0.58	565.11	602548.12	627344.28	32°43'27.200"N	103°59'59.570"W	10.00	END OF CURVE
8522.10†	89.215	89.941	8195.11	572.96	0.59	572.96	602555.96	627344.29	32°43'27.199"N	103°59'59.478"W	0.00	
8622.10†	89.215	89.941	8196.48	672.95	0.69	672.95	602655.95	627344.39	32°43'27.197"N	103°59'58.308"W	0.00	
8722.10†	89.215	89.941	8197.85	772.94	0.80	772.94	602755.93	627344.50	32°43'27.195"N	103°59'57.137"W	0.00	
8822.10†	89.215	89.941	8199.22	872.93	0.90	872.93	602855.91	627344.60	32°43'27.193"N	103°59'55.967"W	0.00	
8922.10†	89.215	89.941	8200.59	972.92	1.00	972.92	602955.89	627344.70	32°43'27.191"N	103°59'54.797"W	0.00	
9022.10†	89.215	89.941	8201.96	1072.91	1.11	1072.91	603055.88	627344.80	32°43'27.189"N	103°59'53.626"W	0.00	
9122.10†	89.215	89.941	8203.33	1172.90	1.21	1172.90	603155.86	627344.91	32°43'27.187"N	103°59'52.456"W	0.00	
9222.10†	89.215	89.941	8204.70	1272.89	1.31	1272.89	603255.84	627345.01	32°43'27.185"N	103°59'51.286"W	0.00	
9322.10†	89.215	89.941	8206.06	1372.88	1.41	1372.88	603355.82	627345.11	32°43'27.183"N	103°59'50.115"W	0.00	
9422.10†	89.215	89.941	8207.43	1472.87	1.52	1472.87	603455.81	627345.22	32°43'27.180"N	103°59'48.945"W	0.00	
9522.10†	89.215	89.941	8208.80	1572.86	1.62	1572.86	603555.79	627345.32	32°43'27.178"N	103°59'47.774"W	0.00	
9622.10†	89.215	89.941	8210.17	1672.85	1.72	1672.85	603655.77	627345.42	32°43'27.176"N	103°59'46.604"W	0.00	
9722.10†	89.215	89.941	8211.54	1772.84	1.83	1772.84	603755.75	627345.53	32°43'27.174"N	103°59'45.434"W	0.00	
9822.10†	89.215	89.941	8212.91	1872.84	1.93	1872.83	603855.74	627345.63	32°43'27.172"N	103°59'44.263"W	0.00	
9922.10†	89.215	89.941	8214.28	1972.83	2.03	1972.83	603955.72	627345.73	32°43'27.170"N	103°59'43.093"W	0.00	
10022.10†	89.215	89.941	8215.65	2072.82	2.14	2072.82	604055.70	627345.84	32°43'27.168"N	103°59'41.922"W	0.00	
10122.10†	89.215	89.941	8217.02	2172.81	2.24	2172.81	604155.68	627345.94	32°43'27.166"N	103°59'40.752"W	0.00	
10222.10†	89.215	89.941	8218.39	2272.80	2.34	2272.80	604255.67	627346.04	32°43'27.163"N	103°59'39.582"W	0.00	
10322.10†	89.215	89.941	8219.76	2372.79	2.45	2372.79	604355.65	627346.14	32°43'27.161"N	103°59'38.411"W	0.00	

Planned Wellpath Report

MOC Mewbourne Oil Company

Prelim_1
Page 3 of 4



REFERENCE WELLPATH IDENTIFICATION

Operator	Mewbourne Oil Company	Slot	No. 4H SHL
Area	Eddy County, NM	Well	No. 4H
Field	(Bradley) Sec 29, T18S, R30E	Wellbore	No. 4H PWB
Facility	Bradley 29 Fed Com No. 4H		

WELLPATH DATA (55 stations) † = interpolated/extrapolated station

MD [ft]	Inclination [°]	Azimuth [°]	TVD [ft]	Vert Sect [ft]	North [ft]	East [ft]	Grid East [srv ft]	Grid North [srv ft]	Latitude	Longitude	DLS [°/100ft]	Comments
10422.10†	89.215	89.941	8221.13	2472.78	2.55	2472.78	604455.63	627346.25	32°43'27.159"N	103°59'37.241"W	0.00	
10522.10†	89.215	89.941	8222.49	2572.77	2.65	2572.77	604555.61	627346.35	32°43'27.157"N	103°59'36.071"W	0.00	
10622.10†	89.215	89.941	8223.86	2672.76	2.75	2672.76	604655.60	627346.45	32°43'27.155"N	103°59'34.900"W	0.00	
10722.10†	89.215	89.941	8225.23	2772.75	2.86	2772.75	604755.58	627346.56	32°43'27.153"N	103°59'33.730"W	0.00	
10822.10†	89.215	89.941	8226.60	2872.74	2.96	2872.74	604855.56	627346.66	32°43'27.151"N	103°59'32.559"W	0.00	
10922.10†	89.215	89.941	8227.97	2972.73	3.06	2972.73	604955.54	627346.76	32°43'27.148"N	103°59'31.389"W	0.00	
11022.10†	89.215	89.941	8229.34	3072.72	3.17	3072.72	605055.53	627346.87	32°43'27.146"N	103°59'30.219"W	0.00	
11122.10†	89.215	89.941	8230.71	3172.71	3.27	3172.71	605155.51	627346.97	32°43'27.144"N	103°59'29.048"W	0.00	
11222.10†	89.215	89.941	8232.08	3272.70	3.37	3272.70	605255.49	627347.07	32°43'27.142"N	103°59'27.878"W	0.00	
11322.10†	89.215	89.941	8233.45	3372.69	3.48	3372.69	605355.47	627347.17	32°43'27.140"N	103°59'26.707"W	0.00	
11422.10†	89.215	89.941	8234.82	3472.69	3.58	3472.68	605455.46	627347.28	32°43'27.137"N	103°59'25.537"W	0.00	
11522.10†	89.215	89.941	8236.19	3572.68	3.68	3572.67	605555.44	627347.38	32°43'27.135"N	103°59'24.367"W	0.00	
11622.10†	89.215	89.941	8237.56	3672.67	3.79	3672.66	605655.42	627347.48	32°43'27.133"N	103°59'23.196"W	0.00	
11722.10†	89.215	89.941	8238.93	3772.66	3.89	3772.66	605755.40	627347.59	32°43'27.131"N	103°59'22.026"W	0.00	
11822.10†	89.215	89.941	8240.29	3872.65	3.99	3872.65	605855.39	627347.69	32°43'27.129"N	103°59'20.856"W	0.00	
11922.10†	89.215	89.941	8241.66	3972.64	4.09	3972.64	605955.37	627347.79	32°43'27.127"N	103°59'19.685"W	0.00	
12022.10†	89.215	89.941	8243.03	4072.63	4.20	4072.63	606055.35	627347.90	32°43'27.124"N	103°59'18.515"W	0.00	
12122.10†	89.215	89.941	8244.40	4172.62	4.30	4172.62	606155.33	627348.00	32°43'27.122"N	103°59'17.344"W	0.00	
12222.10†	89.215	89.941	8245.77	4272.61	4.40	4272.61	606255.32	627348.10	32°43'27.120"N	103°59'16.174"W	0.00	
12322.10†	89.215	89.941	8247.14	4372.60	4.51	4372.60	606355.30	627348.21	32°43'27.118"N	103°59'15.004"W	0.00	
12422.10†	89.215	89.941	8248.51	4472.59	4.61	4472.59	606455.28	627348.31	32°43'27.116"N	103°59'13.833"W	0.00	
12522.10†	89.215	89.941	8249.88	4572.58	4.71	4572.58	606555.26	627348.41	32°43'27.113"N	103°59'12.663"W	0.00	
12622.10†	89.215	89.941	8251.25	4672.57	4.82	4672.57	606655.25	627348.51	32°43'27.111"N	103°59'11.493"W	0.00	
12722.10†	89.215	89.941	8252.62	4772.56	4.92	4772.56	606755.23	627348.62	32°43'27.109"N	103°59'10.322"W	0.00	
12750.08	89.215	89.941	8253.00†	4800.55	4.95	4800.54	606783.21	627348.65	32°43'27.108"N	103°59'09.995"W	0.00	PBHL

Planned Wellpath Report

 Mewbourne Oil Company

Prelim_1
Page 4 of 4



REFERENCE WELLPATH IDENTIFICATION			
Operator	Mewbourne Oil Company	Slot	No. 4H SHL
Area	Eddy County, NM	Well	No. 4H
Field	(Bradley) Sec 29, T18S, R30E	Wellbore	No. 4H PWB
Facility	Bradley 29 Fed Com No. 4H		

TARGETS									
Name	MD [ft]	TVD [ft]	North [ft]	East [ft]	Grid East [srv ft]	Grid North [srv ft]	Latitude	Longitude	Shape
1) No. 4H PBHL	12750.08	8253.00	4.95	4800.54	606783.21	627348.65	32°43'27.108"N	103°59'09.995"W	point

SURVEY PROGRAM Ref Wellbore: No. 4H PWB Ref Wellpath: Prelim_1				
Start MD [ft]	End MD [ft]	Positional Uncertainty Model	Log Name/Comment	Wellbore
18.00	12750.08	NaviTrak (Standard)		No. 4H PWB