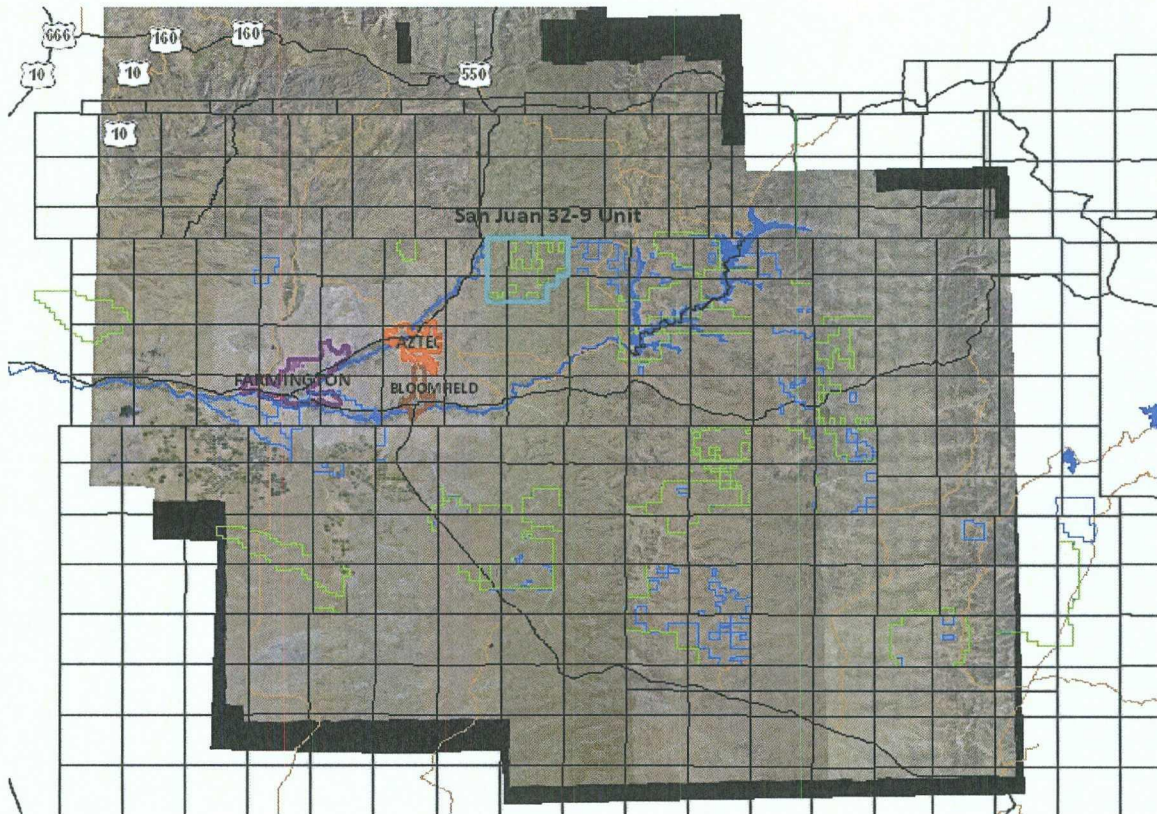


Gas Composition Analysis Method of Allocation
San Juan 32-9 Unit



Before the Oil Conservation Division
Burlington Resources Oil & Gas Company LP
Order No. R-10692 (OCD Case 11601)
Initial Hearing: September 30, 2010

EXHIBIT 2

TABLE OF CONTENTS

	1
<u>San Juan Basin Map - San Juan 32-9 Unit</u>	
	2
<u>MesaVerde and Dakota Participating Area Maps</u>	
	3
<u>Order R-10692, (OCD Case 11601)</u>	
	4
<u>Owner Notifications Tracking Spreadsheets</u>	
	5
<u>Notice Letter and Follow-up Correspondence Spreadsheet</u>	
	6
<u>Reference to Location of Green Cards</u>	
	7
<u>Attorney's Certification of Mailing and Newspaper Notice</u>	
	8
<u>NMOCD Gas Composition Analysis Method of Allocation Approval Letter</u>	

Before the Oil Conservation Division
Exhibit No. 1
Burlington Resources Oil & Gas Company LP
ORDER R-10692, OCD CASE 11601
Initial Hearing: September 30, 2010



Legend

- San Juan 32-9 Unit
- L48-ALL SUB FEDERAL UNITS
- AZTEC
- BLOOMFIELD
- FARMINGTON

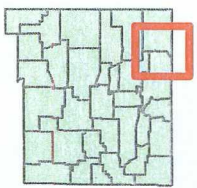


1" equals 82,692'

GCS Assumed Geographic 1

ConocPhillips

© Unpublished Work, ConocPhillips



San Juan 32-9 Unit

Author:	Richard Davis	Date:	9/20/2010
Compiled by:			
Project File: \\phillips\Projects\Land\Templata\Templata 1.mxd			

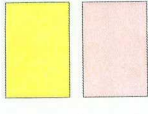
Before the Oil Conservation Division
Exhibit No. 2
Burlington Resources Oil & Gas Company LP
ORDER R-10692, OCD CASE 11601
Initial Hearing: September 30, 2010

San Juan 32-9 Unit

Mesaverde PA

Approved 32nd Expan., Effective 8/1/1960

50% Committed

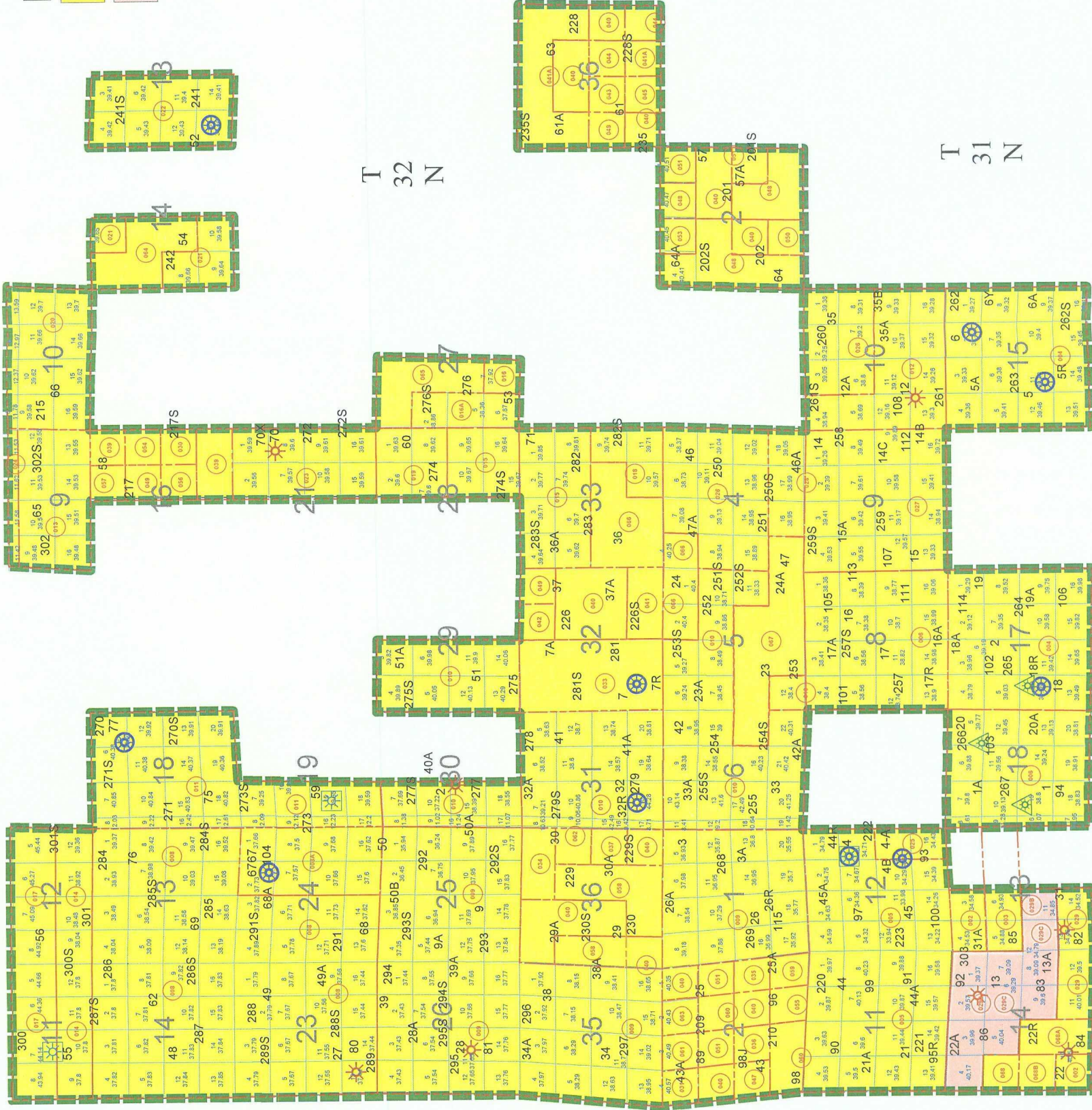


Well Formation

-  DAKOTA
-  FRUITLAND
-  FRUITLAND COAL
-  MESAVERDE
-  PICTURED CLIFFS
-  SHALLOW

R9W

R10W



T 32 N

T 31 N

Land Department
San Juan Business Unit
Farmington, New Mexico
2010

Before the Oil Conservation Division
Exhibit No. 3
Burlington Resources Oil & Gas Company LP
ORDER R-10692, OCD CASE 11601
Initial Hearing: September 30, 2010

STATE OF NEW MEXICO
ENERGY, MINERALS AND NATURAL RESOURCES DEPARTMENT
OIL CONSERVATION DIVISION

IN THE MATTER OF THE HEARING
CALLED BY THE OIL CONSERVATION
DIVISION FOR THE PURPOSE OF
CONSIDERING:

CASE NO. 11601
ORDER NO. R-10692

APPLICATION OF BURLINGTON RESOURCES
OIL & GAS COMPANY FOR THE ESTABLISHMENT
OF A DOWNHOLE COMMINGLING "REFERENCE
CASE" PURSUANT TO DIVISION RULE 303.E. AND
THE ADOPTION OF SPECIAL ADMINISTRATIVE
RULES THEREFOR, SAN JUAN COUNTY, NEW MEXICO.

ORDER OF THE DIVISION

BY THE DIVISION:

This cause came on for hearing at 8:15 a.m. on August 22, 1996, at Santa Fe, New Mexico, before Examiner David R. Catanach.

NOW, on this 1st day of November, 1996, the Division Director, having considered the testimony, the record and the recommendations of the Examiner, and being fully advised in the premises,

FINDS THAT:

(1) Due public notice having been given as required by law, the Division has jurisdiction of this cause and the subject matter thereof.

(2) The applicant, Burlington Resources Oil & Gas Company (Burlington), pursuant to the provisions of Division Rule 303.E., seeks to establish a downhole commingling "reference case" to provide exceptions for (a) marginal economic criteria, (b) pressure criteria, (c) allocation formulas and (d) modification of notification rules on a unit-wide basis for downhole commingling of Dakota, Mesaverde and Pictured Cliffs gas production within existing or future drilled wells within the San Juan 32-9 Unit, San Juan County, New Mexico.

(3) Division Rule No. 303.E., amended by Order No. R-10470-A, currently states:

"If sufficient data exists on a lease, pool, formation, geographic area, etc., so as to render it unnecessary to repeatedly provide such data on Form C-107-A, an operator may except any of the various criteria required under Paragraph 303.D. of this rule by establishing a "reference case". The Division, upon its own motion, or by application from an operator, may establish "reference cases" either administratively or by hearing. Upon Division approval of such "reference cases" for specific criteria, subsequent applications to downhole commingle (Form C-107-A) will be required only to cite the Division order number which established such exceptions and shall not be required to submit data for those criteria."

(4) The applicant is the current operator of the San Juan 32-9 Unit which encompasses some 21,864 acres in Townships 31 and 32 North, Ranges 9 and 10 West, NMPM, San Juan County, New Mexico.

(5) Within the San Juan 32-9 Unit, the applicant currently operates two (2) Basin-Dakota Gas Pool wells, one hundred twenty-eight (128) Blanco-Mesaverde Gas Pool wells and thirty-two (32) Blanco-Pictured Cliffs Gas Pool wells.

(6) According to its evidence and testimony, Burlington seeks to:

- a) establish a "reference case" for marginal economic criteria in the Dakota and Pictured Cliffs formations whereby these formations and/or pools may be identified as "marginal" on Form C-107-A's subsequently filed for wells within the San Juan 32-9 Unit. The applicant further proposes that the data provided in the immediate case serve as supplemental data or confirmation that these formations and/or pools should be classified as "marginal";
- b) establish a "reference case" for pressure criteria in the Dakota and Pictured Cliffs formations whereby the Division may utilize data provided in the immediate case to verify the pressure data provided on Form C-107-A's subsequently filed for wells within the San Juan 32-9 Unit;
- c) establish a "reference case" whereby the Division utilizes the data presented in the immediate case to endorse or approve certain methods of allocating production whereby the applicant need not submit additional data or justification when proposing a certain method of allocating production on Form C-107-A's subsequently filed for wells within the San Juan 32-9 Unit; and,

- d) establish a "reference case" or an administrative procedure for authorizing the downhole commingling of existing or future drilled wells within the San Juan 32-9 Unit without additional notice to each affected interest owner as required by Division Rule No. 303.D.

(7) In support of its request to except marginal economic criteria, the applicant presented geologic and engineering evidence and testimony which indicates that within the San Juan 32-9 Unit:

- a) the structure and thickness of the Dakota and Pictured Cliffs formations are very consistent;
- b) the average recoverable Pictured Cliffs gas reserves underlying an undeveloped drill block are approximately 700 MMCFG.
- c) initial producing rates for newly drilled or recompleted Pictured Cliffs gas wells range from 150-600 MCFGD;
- d) the San Juan 32-9 Unit Well Nos. 113 and 114 were recently drilled to test the Dakota formation within the unit. Both wells proved non-productive in the Dakota formation; and,
- e) the estimated ultimate gas recoveries and initial producing rates from the Dakota and Pictured Cliffs formations are insufficient to justify drilling stand alone wells and/or dually completed wells to recover such gas reserves.

(8) The evidence and testimony presented by the applicant indicates that the Dakota and Pictured Cliffs formations within the San Juan 32-9 Unit should be properly classified as "marginal".

(9) In support of its request to except pressure criteria within the Dakota and Pictured Cliffs formations within the San Juan 32-9 Unit, the applicant presented engineering evidence and testimony which indicates that:

- a) the average shut-in pressure within the Pictured Cliffs formation at the time of initial development was approximately 562 psi; and,

- b) the average current shut-in pressure within the Pictured Cliffs formation is approximately 349 psi.

(10) The applicant did not present sufficient bottomhole pressure data within the Dakota and Pictured Cliffs formations within the San Juan 32-9 Unit so as to justify the establishment of a "reference case" for pressure criteria.

(11) The applicant testified that various allocation methods will be utilized for downhole commingled wells within the San Juan 32-9 Unit depending on the circumstances. Some of the methods and circumstances are described as follows:

- a) the subtraction method will likely be utilized in those instances where a zone with a well established decline rate is commingled with a newly completed zone; and,
- b) a fixed allocation formula will be utilized in those instances where production history for both zones is available, or in those instances where newly completed zones are tested and stabilized flow rates obtained.

(12) The allocation methods proposed by the applicant are routinely utilized by industry and approved by the Division and therefore, the proposal to except allocation formulas should be approved.

(13) In support of its request to establish a "reference case" or administrative procedure for providing notice within the San Juan 32-9 Unit the applicant presented evidence and testimony which indicates that:

- a) the interest ownership between two zones within a given wellbore in the San Juan 32-9 Unit is generally not common;
- b) pursuant to Division Rule No. 303.D., applicant is currently required to notify all interest owners within the San Juan 32-9 Unit every time a Form C-107-A is submitted to the Division. There are a considerable number of such interest owners within the unit;
- c) providing notice to each interest owner within the San Juan 32-9 Unit of subsequent downhole comminglings is unnecessary and is an excessive burden on the applicant;

- d) the downhole commingling of wells within the San Juan 32-9 Unit Area will benefit working, royalty, and overriding royalty interest owners. In addition, the downhole commingling of wells within the San Juan 32-9 Unit should not violate the correlative rights of any interest owner;
- e) no interest owner appeared at the hearing in opposition to the establishment of a "reference case" or administrative procedure for notice.

(14) An administrative procedure should be established within the San Juan 32-9 Unit for obtaining approval for subsequently downhole commingled wells without notice to Unit interest owners, provided however that, all other provisions contained within Division Rule No. 303.C. are complied with.

(15) Approval of the proposed "reference cases" for marginal economic criteria, allocation formulas and notice will lessen the burden on the applicant insofar as providing the data required pursuant to Division Rule No. 303.D. and Form C-107-A, will provide the applicant a streamlined method for obtaining downhole commingling approvals within the San Juan 32-9 Unit, and will not violate correlative rights.

IT IS THEREFORE ORDERED THAT:

(1) The application of Burlington Resources Oil & Gas Company to establish a "reference case" for (a) marginal economic criteria, (b) allocation formulas and (c) modification of notification rules on a unit-wide basis for downhole commingling of Dakota, Mesaverde and Pictured Cliffs gas production within existing or future drilled wells within the San Juan 32-9 Unit, San Juan County, New Mexico, is hereby approved.

(2) The application of Burlington Resources Oil & Gas Company to establish a "reference case" for pressure criteria in the Dakota and Pictured Cliffs formation within the San Juan 32-9 Unit is hereby denied.

(3) Upon filing of Division Form No. C-107-A's for wells subsequently downhole commingled within the San Juan 32-9 Unit Area, the applicant shall not be required to submit supporting data to justify the classification of the Pictured Cliffs and Dakota formations as "marginal" and support or justification for utilizing a given method or formula for allocation of production, provided however, in the event any of the data described above appearing on Form C-107-A appears to be beyond the data range provided in this case, the Division may require the submittal of additional supporting data.

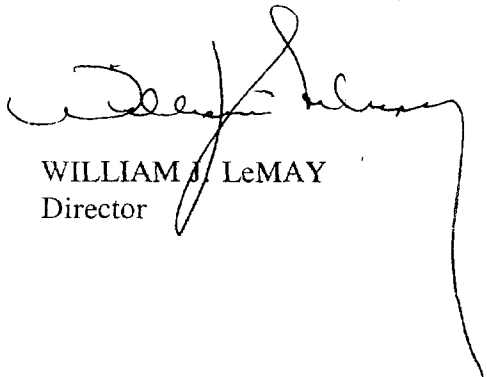
CASE NO. 11601
Order No. R-10692
Page -6-

(4) In order to obtain Division authorization to downhole commingle wells within the San Juan 32-9 Unit, the applicant shall file a Form C-107-A with the Santa Fe and Aztec Offices of the Division. Such application shall contain all the information required under Rule No. 303.C. of the Division Rules and Regulations, provided however that the applicant shall not be required to provide notice to all interest owners within the San Juan 32-9 Unit of such proposed commingling.

(5) Jurisdiction of this cause is retained for the entry of such further orders as the Division may deem necessary.

DONE at Santa Fe, New Mexico, on the day and year hereinabove designated.

STATE OF NEW MEXICO
OIL CONSERVATION DIVISION



WILLIAM J. LeMAY
Director

S E A L

Before the Oil Conservation Division
Exhibit No. 4 A
Burlington Resources Oil & Gas Company LP
ORDER R-10692, OCD CASE 11601
Initial Hearing: September 30, 2010

Mesaverde / Dakota Owners Notified / Green Card Receipts

R-10786, R-10694, R-10695, R-10696, R-10476-B, R-10770, R-11187, R-10697, R-10771, R-10692

Owner Name	Date Mailed	Certified Number	Certified Green Card Received
1994 KENYON FAMILY TRUST	9/1/2010	7110 6605 9590 0011 8818	
A RAY DAVIS	9/1/2010	7110 6605 9590 0011 8825	YES
A WILLIAM RUTTER TRUST	9/1/2010	7110 6605 9590 0011 8832	YES
ABEL LOBATO	9/1/2010	7110 6605 9590 0011 8849	YES
ABQ ENERGY GROUP LTD	9/1/2010	7110 6605 9590 0011 8856	YES
ACCORD DU LAC PARTNERSHIP LLLP	9/1/2010	7110 6605 9590 0011 8863	YES
ACOMA OIL CORPORATION	9/1/2010	7110 6605 9590 0011 8870	YES
ACTON ENERGY LP	9/1/2010	7110 6605 9590 0011 8887	YES
ADELANTE OIL & GAS LLC	9/1/2010	7110 6605 9590 0011 8894	YES
ALAN D JERMAN	9/1/2010	7110 6605 9590 0011 8900	YES
ALAN HANNIFIN	9/1/2010	7110 6605 9590 0011 8917	YES
ALBERT HOLLY	9/1/2010	7110 6605 9590 0011 8924	YES
ALBERT L HOPKINS JR	9/1/2010	7110 6605 9590 0011 8931	YES
ALBERT V. WORKS, JR.	9/1/2010	7110 6605 9590 0011 8948	Notification Returned
ALICE BROWN	9/1/2010	7110 6605 9590 0011 8955	YES
ALICE JANE WEBB	9/1/2010	7110 6605 9590 0011 8962	YES
ALICE M VICENTI	9/1/2010	7110 6605 9590 0011 8979	YES
ALICE RAINS	9/1/2010	7110 6605 9590 0011 8986	YES
ALISON A GOTTSTEIN	9/1/2010	7110 6605 9590 0011 8993	YES
AMBER CROWLEY	9/1/2010	7110 6605 9590 0011 9006	YES
AMELIA ANNE SUNDBERG	9/1/2010	7110 6605 9590 0011 9013	YES
AMELIA C KELLY	9/1/2010	7110 6605 9590 0011 9020	YES
AMERICAN ASSURANCE 2000 LP	9/1/2010	7110 6605 9590 0011 9037	YES
AMIRA F BOISSON	9/1/2010	7110 6605 9590 0011 9044	YES
AMMO INVESTEMENT	9/1/2010	7110 6605 9590 0011 9051	YES
ANDERSON LIVING TRUST APRIL 29 2003	9/1/2010	7110 6605 9590 0011 9068	YES
ANDREA DAVENPORT	9/1/2010	7110 6605 9590 0011 9075	YES
ANDREA T LUCERO	9/1/2010	7110 6605 9590 0011 9082	YES
ANDREW B KELLY JR	9/1/2010	7110 6605 9590 0011 9099	
ANDREW J HOMBURGER	9/1/2010	7110 6605 9590 0011 9105	YES
ANGELA SLAIS	9/1/2010	7110 6605 9590 0011 9112	YES
ANGELINA BURKIN	9/15/2010	7110 6605 9590 0013 2722	YES
ANITA BRIGGS	9/1/2010	7110 6605 9590 0011 9129	YES
ANN BOYD	9/1/2010	7110 6605 9590 0011 9136	YES
ANN HOME EMMERSON TRUST	9/1/2010	7110 6605 9590 0011 9143	YES
ANN MARIE MITCHELL	9/1/2010	7110 6605 9590 0011 9150	YES
ANNA CELIA HOWELL HILTON	9/1/2010	7110 6605 9590 0011 9167	YES
ANNA MARIE LUCAS	9/1/2010	7110 6605 9590 0011 9174	YES
ANNA REBECCA WARD DELKRUG	9/1/2010	7110 6605 9590 0011 9181	YES
ANNE MCCORD MILLER	9/1/2010	7110 6605 9590 0011 9198	YES
ANNIE MAE COOPER	9/1/2010	7110 6605 9590 0011 9204	
ANTHONY BARD BOARD	9/1/2010	7110 6605 9590 0011 9211	Notification Returned
APCO MINERALS LTD	9/1/2010	7110 6605 9590 0011 9228	YES
ARCH W SHAW II TRUST UAD FEB 1 1971	9/1/2010	7110 6605 9590 0011 9235	YES
ARCHER PEARL ENERGY LLC	9/1/2010	7110 6605 9590 0011 9242	YES
ARMONDO E ESPINOSA	9/15/2010	7110 6605 9590 0013 3231	YES
ARNE L FILAN	9/15/2010	7110 6605 9590 0013 2739	YES
ART CUNNINGHAM	9/1/2010	7110 6605 9590 0011 9259	YES
ASCENCION T WALKER	9/1/2010	7110 6605 9590 0011 9266	YES

Mesaverde / Dakota Owners Notified / Green Card Receipts

R-10786, R-10694, R-10695, R-10696, R-10476-B, R-10770, R-11187, R-10697, R-10771, R-10692

Owner Name	Date Mailed	Certified Number	Certified Green Card Received
ASHBURN LIVING TRUST	9/1/2010	7110 6605 9590 0011 9273	YES
ATKO PARTNERS LTD	9/1/2010	7110 6605 9590 0011 9280	YES
ATLANTIC PARTNERS	9/1/2010	7110 6605 9590 0011 9297	YES
B WYNNE WOOLLEY JR TR UWO L P WOOLLEY	9/1/2010	7110 6605 9590 0011 9303	YES
BALLARD E SPENCER TRUST INC	9/1/2010	7110 6605 9590 0011 9310	YES
BARBARA A BRYANT 2003 GRANTOR TRUST	9/1/2010	7110 6605 9590 0011 9327	YES
BARBARA ANN HAMILTON	9/1/2010	7110 6605 9590 0011 9334	YES
BARBARA EVANS	9/1/2010	7110 6605 9590 0011 9341	YES
BARBARA J CONN	9/1/2010	7110 6605 9590 0011 9358	YES
BARBARA JOHNSON	9/1/2010	7110 6605 9590 0011 9365	YES
BARBARA LEIGH FARAH	9/1/2010	7110 6605 9590 0011 9372	YES
BARBARA N KOONS TRUST	9/1/2010	7110 6605 9590 0011 9389	YES
BARBARA REESE DINGES	9/1/2010	7110 6605 9590 0011 9396	YES
BARD FAMILY TRUST U/A/D 7/25/49	9/1/2010	7110 6605 9590 0011 9402	YES
BARRON U KIDD	9/1/2010	7110 6605 9590 0011 9419	YES
BB ROYALTY	9/15/2010	7110 6605 9590 0013 3248	YES
BEATRICE G RODRIQUEZ FAMILY LLC	9/1/2010	7110 6605 9590 0011 9426	YES
BEERS FAMILY TR DTD AUGUST 21 2008	9/1/2010	7110 6605 9590 0011 9433	YES
BEN HOWELL LANGFORD	9/1/2010	7110 6605 9590 0011 9440	YES
BEN R HOWARD	9/1/2010	7110 6605 9590 0011 9457	YES
BEN R HOWELL TRUST	9/1/2010	7110 6605 9590 0011 9464	YES
BENJAMIN J & SUSAN BRACK	9/1/2010	7110 6605 9590 0011 9471	YES
BENJAMIN JAMES GARDNER TR NOV 28 2006	9/1/2010	7110 6605 9590 0011 9488	YES
BENJAMIN JOHN BRACK	9/1/2010	7110 6605 9590 0011 9495	YES
BENNETT FAMILY TRUST	9/1/2010	7110 6605 9590 0011 9501	YES
BERIN EARL RILEY	9/1/2010	7110 6605 9590 0011 9518	
BESSIE L WHELAN TR	9/1/2010	7110 6605 9590 0011 9525	YES
BETH DADDIO	9/1/2010	7110 6605 9590 0011 9532	Notification Returned
BETSY H BRYANT	9/1/2010	7110 6605 9590 0011 9549	YES
BETTY ADKINS	9/1/2010	7110 6605 9590 0011 9556	YES
BETTY L LONG LVG TRUST UAD SEPT 5 2002	9/1/2010	7110 6605 9590 0011 9563	YES
BETTY LANIER FANKHAUSER	9/15/2010	7110 6605 9590 0013 2746	YES
BETTY R DAVIS	9/1/2010	7110 6605 9590 0011 9570	Unclaimed
BETTY S PETTUS LIFE ESTATE	9/1/2010	7110 6605 9590 0011 9587	YES
BETTY T JOHNSTON MARITAL TRUST	9/1/2010	7110 6605 9590 0011 9594	YES
BETTY WEST STEDMAN	9/1/2010	7110 6605 9590 0011 9600	YES
BEVERLY A CORBETT BAKER	9/15/2010	7110 6605 9590 0013 3255	YES
BEVERLY KISER	9/15/2010	7110 6605 9590 0013 2753	
BHCH MINERAL LTD	9/1/2010	7110 6605 9590 0011 9617	YES
BIG LAKE FISHING LLC	9/1/2010	7110 6605 9590 0011 9624	
BIG SNOWY EXPLORATION LIMITED	9/1/2010	7110 6605 9590 0011 9631	YES
BILL LANE & JANICE LANE	9/1/2010	7110 6605 9590 0011 9648	
BILLIE W SCHAUMBERG REV LVG TR	9/1/2010	7110 6605 9590 0011 9655	YES
BLACK DAHLIA LLC	9/1/2010	7110 6605 9590 0011 9662	YES
BLACK RIVER ROYALTIES LLC	9/1/2010	7110 6605 9590 0011 9679	YES
BLANCETT LAND & CATTLE LLC	9/1/2010	7110 6605 9590 0011 9686	YES
BOBBY DALE SMITH	9/1/2010	7110 6605 9590 0011 9693	YES
BOBBYE JO IRBY SUPPL. NEEDS TR UTA 0/3/05	9/15/2010	7110 6605 9590 0013 3262	YES
BOFB LTD	9/1/2010	7110 6605 9590 0011 9709	YES

Mesaverde / Dakota Owners Notified / Green Card Receipts

R-10786, R-10694, R-10695, R-10696, R-10476-B, R-10770, R-11187, R-10697, R-10771, R-10692

Owner Name	Date Mailed	Certified Number	Certified Green Card Received
BOLDRICK FAMILY PROPERTIES LP	9/1/2010	7110 6605 9590 0011 9716	YES
BONANZA CREEK MINERALS LLC	9/1/2010	7110 6605 9590 0011 9723	YES
BONE SPRINGS LLC	9/15/2010	7110 6605 9590 0013 3279	YES
BOURQUIN FAMILY TRUST	9/1/2010	7110 6605 9590 0011 9730	YES
BP AMERICA PRODUCTION COMPANY	9/1/2010	7110 6605 9590 0011 9747	
BRADFORD TUCKER	9/1/2010	7110 6605 9590 0011 9754	
BRIAN DICKEY	9/1/2010	7110 6605 9590 0011 9761	YES
BRIAN DOWNING GIBSON	9/1/2010	7110 6605 9590 0011 9778	YES
BRIANNA CROWLEY	9/1/2010	7110 6605 9590 0011 9785	YES
BRUCE FRIDLEY	9/1/2010	7110 6605 9590 0011 9792	YES
BRUCE P SHAW TRUST UAD JUNE 8 1972	9/1/2010	7110 6605 9590 0011 9808	YES
BRYAN E JENKS	9/1/2010	7110 6605 9590 0011 9815	YES
BUDDIE GENE CHAPPELL / TRUST B	9/1/2010	7110 6605 9590 0011 9822	YES
BURDOCK LTD CO	9/1/2010	7110 6605 9590 0011 9839	YES
C A HANSON INDIV & NATURAL	9/1/2010	7110 6605 9590 0011 9846	YES
C L NORDSTROM FAMILY LLC	9/1/2010	7110 6605 9590 0011 9853	Unclaimed
C W BOLIN PROPERTIES LTD	9/1/2010	7110 6605 9590 0011 9860	YES
CANDI JO LIPOUSKI	9/15/2010	7110 6605 9590 0013 3286	YES
CARL W VOGT	9/1/2010	7110 6605 9590 0011 9877	YES
CARLA JEAN O'HORNETT	9/15/2010	7110 6605 9590 0013 3293	YES
CARLOS M SENA	9/1/2010	7110 6605 9590 0011 9884	YES
CARMEN J VIGIL V	9/1/2010	7110 6605 9590 0011 9891	YES
CAROL A MARTINEZ RAMERIZ	9/15/2010	7110 6605 9590 0013 3309	YES
CAROL L NELSON	9/1/2010	7110 6605 9590 0011 9907	YES
CAROLE MELINDA MYATT VAUGHT	9/15/2010	7110 6605 9590 0013 3316	YES
CAROLEE SIMMONS SMITH	9/1/2010	7110 6605 9590 0011 9914	YES
CAROLYN BEAMON TILLEY	9/1/2010	7110 6605 9590 0011 9921	
CAROLYN DAVANT FRICKE	9/1/2010	7110 6605 9590 0011 9938	YES
CAROLYN DEFFEBACH	9/1/2010	7110 6605 9590 0011 9945	YES
CAROLYN J ROSS DECLARATION	9/1/2010	7110 6605 9590 0011 9952	YES
CAROLYN JUDITH COMBS	9/1/2010	7110 6605 9590 0011 9969	YES
CAROLYN M FITZGERALD	9/1/2010	7110 6605 9590 0011 9976	YES
CAROLYN M HARRIS	9/1/2010	7110 6605 9590 0011 9983	YES
CAROLYN NIELSEN SEDBERRY	9/1/2010	7110 6605 9590 0011 9990	YES
CAROLYNN CLARK WIGGIN	9/1/2010	7110 6605 9590 0012 0002	YES
CARROLL D MYER	9/1/2010	7110 6605 9590 0012 0019	YES
CARROLL DEVERE MYER II	9/1/2010	7110 6605 9590 0012 0026	YES
CARTER FAMILY TRUST	9/1/2010	7110 6605 9590 0012 0033	YES
CARYN JEFFREY	9/1/2010	7110 6605 9590 0012 0040	YES
CASA GRANDE ROYALTY CO INC	9/1/2010	7110 6605 9590 0012 0057	YES
CASSANDRA KEYSER	9/1/2010	7110 6605 9590 0012 0064	
CASTLE INC.	9/1/2010	7110 6605 9590 0012 0071	YES
CATALIS LLC	9/1/2010	7110 6605 9590 0012 0088	YES
CATHARINE GRAY REMENICK	9/1/2010	7110 6605 9590 0012 0095	YES
CATHARINE J DICKEY LIVING TRUST	9/1/2010	7110 6605 9590 0012 0101	YES
CATHERINE FORTIN	9/15/2010	7110 6605 9590 0013 3323	YES
CATHERINE H RUMML REVOCABLE TRUST	9/1/2010	7110 6605 9590 0012 0118	YES
CATHERINE M VIOLA TR	9/15/2010	7110 6605 9590 0013 2760	YES
CATHERINE ROSS	9/1/2010	7110 6605 9590 0012 0125	YES

Mesaverde / Dakota Owners Notified / Green Card Receipts

R-10786, R-10694, R-10695, R-10696, R-10476-B, R-10770, R-11187, R-10697, R-10771, R-10692

Owner Name	Date Mailed	Certified Number	Certified Green Card Received
CATHY J POUND	9/1/2010	7110 6605 9590 0012 0132	YES
CB LIFELINE PARTNERSHIP	9/1/2010	7110 6605 9590 0012 0149	
CECELIA V OTTO	9/1/2010	7110 6605 9590 0012 0156	YES
CEEFAM LLC	9/1/2010	7110 6605 9590 0012 0163	YES
CELSO GOMEZ IRREV TR FOR GRANDCHILD	9/1/2010	7110 6605 9590 0012 0170	YES
CELSO GOMEZ JR	9/1/2010	7110 6605 9590 0012 0187	YES
CHAD A MACINTOSH	9/1/2010	7110 6605 9590 0012 0194	YES
CHAPPELL FAMILY TR UTA DTD JUNE 4 98	9/1/2010	7110 6605 9590 0012 0200	YES
CHARLENE R AUVIL	9/1/2010	7110 6605 9590 0012 0217	Notification Returned
CHARLES B EDMIASTON	9/1/2010	7110 6605 9590 0012 0224	YES
CHARLES COLEMAN JENKINS II	9/1/2010	7110 6605 9590 0012 0231	YES
CHARLES LONGCOPE JR	9/1/2010	7110 6605 9590 0012 0248	YES
CHARLES RUSSELL BELL	9/1/2010	7110 6605 9590 0012 0255	YES
CHARLES SIAU	9/1/2010	7110 6605 9590 0012 0262	YES
CHARLES W GAY	9/1/2010	7110 6605 9590 0012 0279	YES
CHARLES W MCCARTY TRUST	9/1/2010	7110 6605 9590 0012 0286	YES
CHARTER ROYALTY 96, LTD.	9/1/2010	7110 6605 9590 0012 0293	YES
CHASE OIL CORPORATION	9/1/2010	7110 6605 9590 0012 0309	YES
CHERYL WILSON HAIRSTON	9/1/2010	7110 6605 9590 0012 0316	YES
CHEVRON MIDCONTINENT LP	9/1/2010	7110 6605 9590 0012 0323	YES
CHILDRENS TRUST UW HARRY D PORTER	9/1/2010	7110 6605 9590 0012 0330	YES
CHRIS HIGNETT	9/1/2010	7110 6605 9590 0012 0347	Notification Returned- New Address-Remailed 10-4-10.
CHRIS W JERMAN	9/1/2010	7110 6605 9590 0012 0354	YES
CHRISTIE SMITH	9/1/2010	7110 6605 9590 0012 0361	YES
CHRISTINE CLAYTON	9/1/2010	7110 6605 9590 0012 0378	YES
CHRISTOPHER HOFFMANN	9/1/2010	7110 6605 9590 0012 0385	YES
CINDY L BROWN	9/15/2010	7110 6605 9590 0013 3330	YES
CINDY M HARTNER	9/1/2010	7110 6605 9590 0012 0392	YES
CLARICE LUHM	9/1/2010	7110 6605 9590 0012 0408	YES
CLAUD W RAYBOURN ESTATE	9/1/2010	7110 6605 9590 0012 0415	
CLAUDETTE PIPER	9/1/2010	7110 6605 9590 0012 0422	YES
CLAUDIA MARCIA LUNDELL GILMER	9/1/2010	7110 6605 9590 0012 0439	YES
CONNIE L HESS	9/1/2010	7110 6605 9590 0012 0446	YES
CONNIE MORRISON	9/1/2010	7110 6605 9590 0012 0453	YES
COOKSEY FAMILY TRUST	9/1/2010	7110 6605 9590 0012 0460	YES
CORA BACON	9/15/2010	7110 6605 9590 0013 2777	YES
CORAZON GOMEZ LLC	9/1/2010	7110 6605 9590 0012 0477	YES
CORNELIA DAVANT PERRY	9/1/2010	7110 6605 9590 0012 0484	YES
CRAIG B FRIDLEY	9/1/2010	7110 6605 9590 0012 0491	YES
CRAIG CORNELL	9/1/2010	7110 6605 9590 0012 0507	YES
CRAIG M HORN LIVING TRUST	9/15/2010	7110 6605 9590 0013 2784	YES
CROFF OIL CO INC	9/1/2010	7110 6605 9590 0012 0514	YES
CULVER MILITARY ACADEMY	9/1/2010	7110 6605 9590 0012 0521	YES
CURTIS PAUL JOHNSON PAM JOHNSON LIV TR	9/1/2010	7110 6605 9590 0012 0538	YES
CYNTHIA C BURR	9/1/2010	7110 6605 9590 0012 0545	YES
CYNTHIA CALVIN	9/1/2010	7110 6605 9590 0012 0552	YES
CYNTHIA GRAY MILANI ESTATE	9/1/2010	7110 6605 9590 0012 0569	YES
CYRENE L INMAN	9/1/2010	7110 6605 9590 0012 0576	YES

Mesaverde / Dakota Owners Notified / Green Card Receipts

R-10786, R-10694, R-10695, R-10696, R-10476-B, R-10770, R-11187, R-10697, R-10771, R-10692

Owner Name	Date Mailed	Certified Number	Certified Green Card Received
D A ABRAHAM LLC	9/1/2010	7110 6605 9590 0012 0583	YES
D E CORNELL IV	9/1/2010	7110 6605 9590 0012 0590	YES
D J SIMMONS CO LTD PARTNERSHIP	9/1/2010	7110 6605 9590 0012 0606	YES
D P BOLIN	9/1/2010	7110 6605 9590 0012 0613	YES
DALE EDWARD PERRYMAN TRUST	9/1/2010	7110 6605 9590 0012 0620	YES
DALE STANLEY SMITH	9/1/2010	7110 6605 9590 0012 0637	YES
DAN H BOLIN	9/1/2010	7110 6605 9590 0012 0644	YES
DANIEL D DOVE	9/1/2010	7110 6605 9590 0012 0651	YES
DANIEL PONDER BRENNAND	9/1/2010	7110 6605 9590 0012 0668	YES
DARBY WILSON MAIR	9/1/2010	7110 6605 9590 0012 0675	YES
DARLENE COLLINS	9/1/2010	7110 6605 9590 0012 0682	YES
DAVID A JENNINGS	9/15/2010	7110 6605 9590 0013 2791	YES
DAVID A PIERCE	9/1/2010	7110 6605 9590 0012 0699	YES
DAVID AHO TR	9/15/2010	7110 6605 9590 0013 2807	YES
DAVID B TALBOT III	9/1/2010	7110 6605 9590 0012 0705	YES
DAVID CHANCELLOR	9/15/2010	7110 6605 9590 0013 3347	YES
DAVID DEWAYNE WENDT LIV TR DTD 1/19/05	9/15/2010	7110 6605 9590 0013 3354	YES
DAVID ELBERT REESE	9/1/2010	7110 6605 9590 0012 0712	YES
DAVID GREER MORGAN	9/1/2010	7110 6605 9590 0012 0729	YES
DAVID H GRAY	9/1/2010	7110 6605 9590 0012 0736	YES
DAVID HENDERSON	9/1/2010	7110 6605 9590 0012 0743	YES
DAVID SCHMIDT	9/1/2010	7110 6605 9590 0012 0750	YES
DAVID V FREDERKING IRREVOC TRUST	9/1/2010	7110 6605 9590 0012 0767	YES
DAVID WALKER SMITH	9/1/2010	7110 6605 9590 0012 0774	
DAVID WILLIAM BRENNAND	9/1/2010	7110 6605 9590 0012 0781	YES
DAWSON FAMILY TRUST	9/1/2010	7110 6605 9590 0012 0798	YES
DEAH N FOLK LIVING TR DTD APRIL 14 1983	9/1/2010	7110 6605 9590 0012 0804	YES
DEAN & DARLA KENYON 2003 FAMILY TR	9/1/2010	7110 6605 9590 0012 0811	YES
DEANE W BURNETT	9/15/2010	7110 6605 9590 0013 3385	YES
DEBORAH HERRIG	9/1/2010	7110 6605 9590 0012 0828	YES
DEBRA LEE DUPRAY	9/1/2010	7110 6605 9590 0012 0835	YES
DELFINITA G CHAVEZ	9/1/2010	7110 6605 9590 0012 0842	YES
DELMA F KELLEY TESTAMENTARY TRUST	9/1/2010	7110 6605 9590 0012 0859	YES
DENISE TURNBULL J WILLIAMS	9/1/2010	7110 6605 9590 0012 0866	YES
DENNIS CROWLEY	9/1/2010	7110 6605 9590 0012 0873	YES
DENNIS G ESPINOSA	9/15/2010	7110 6605 9590 0013 3392	YES
DENNIS R & TERESA M REIMERS JT	9/1/2010	7110 6605 9590 0012 0880	YES
DENNIS R REIMERS	9/1/2010	7110 6605 9590 0012 0897	YES
DENNIS R STAAL	9/1/2010	7110 6605 9590 0012 0903	YES
DEREK PETER VENEZIA	9/1/2010	7110 6605 9590 0012 0927	YES
DERRICK J TURNBULL	9/1/2010	7110 6605 9590 0012 0934	YES
DEVIN W SMITH	9/15/2010	7110 6605 9590 0013 3408	YES
DEVON ENERGY PRODUCTION COMPANY LP	9/1/2010	7110 6605 9590 0012 0941	YES
DH MYATT	9/15/2010	7110 6605 9590 0013 3415	YES
DHP LIV TR	9/15/2010	7110 6605 9590 0013 2821	YES
DIANA S ROWLEY RESIDUARY TRUST	9/1/2010	7110 6605 9590 0012 0958	
DIANE DERRY	9/1/2010	7110 6605 9590 0012 0965	YES
DIANNA DICKEY	9/1/2010	7110 6605 9590 0012 0972	YES
DICK HOLLAND	9/1/2010	7110 6605 9590 0012 0989	YES

Mesaverde / Dakota Owners Notified / Green Card Receipts

R-10786, R-10694, R-10695, R-10696, R-10476-B, R-10770, R-11187, R-10697, R-10771, R-10692

Owner Name	Date Mailed	Certified Number	Certified Green Card Received
DIRK VANHORN REEMTSMA	9/1/2010	7110 6605 9590 0012 0996	YES
DIXIE LEE BOONE	9/1/2010	7110 6605 9590 0012 1009	YES
DOLLY CARSWELL	9/15/2010	7110 6605 9590 0013 3422	YES
DOLORAS E DOLLAR	9/1/2010	7110 6605 9590 0012 1016	YES
DON C. DENNIS, TRUSTEE OF J. M. DENNIS 3-18-81	9/1/2010	7110 6605 9590 0012 1023	YES
DON DENNIS	9/1/2010	7110 6605 9590 0012 1030	YES
DON K ILFELD	9/15/2010	7110 6605 9590 0013 2838	YES
DON REED	9/1/2010	7110 6605 9590 0012 1047	YES
DONALD CANDELARIA & FLORANCE CANDELARIA	9/1/2010	7110 6605 9590 0012 1054	YES
DONALD E FAGAN	9/1/2010	7110 6605 9590 0012 1061	YES
DONALD E FAGAN	9/15/2010	7110 6605 9590 0013 2845	YES
DONALD E PELOTTE	9/15/2010	7110 6605 9590 0013 2852	YES
DONALD J MERRION TRUST	9/1/2010	7110 6605 9590 0012 1078	YES
DONALD MANGUM	9/1/2010	7110 6605 9590 0012 1085	YES
DONALD S. IRONSIDE	9/1/2010	7110 6605 9590 0012 1092	
DONALD TURRIETTA	9/1/2010	7110 6605 9590 0012 1108	YES
DONNA DIANE BANZHOF	9/1/2010	7110 6605 9590 0012 1115	Unclaimed
DONNA KRILL	9/1/2010	7110 6605 9590 0012 1122	YES
DORA PARKER	9/1/2010	7110 6605 9590 0012 1139	YES
DORIAN L STOLWORTHY LIV TR DD APRL 4 99	9/1/2010	7110 6605 9590 0012 1146	Unclaimed
DOROTEA VALDEZ LOPEZ ESTATE	9/1/2010	7110 6605 9590 0012 1153	YES
DOROTHY A FARNHAM	9/1/2010	7110 6605 9590 0012 1160	YES
DOROTHY B HUGHES ESTATE	9/1/2010	7110 6605 9590 0012 1177	YES
DOROTHY E DENMAN	9/1/2010	7110 6605 9590 0012 1184	YES
DOROTHY M OLIVER	9/1/2010	7110 6605 9590 0012 1191	YES
DOUGLAS CAMERON MCLEOD	9/1/2010	7110 6605 9590 0012 1207	YES
DOUGLAS E ATWILL	9/1/2010	7110 6605 9590 0012 1214	YES
DOUGLAS E JOHNSTON	9/1/2010	7110 6605 9590 0012 1221	YES
DUFF-LEACH FAMILY TRUST	9/1/2010	7110 6605 9590 0012 1238	YES
DUGAN PRODUCTION CORP	9/1/2010	7110 6605 9590 0012 1245	YES
E HUNTER STONE II TR	9/1/2010	7110 6605 9590 0012 1252	YES
E TAIT MELDRAM REV TR DTD 12/01/04	9/15/2010	7110 6605 9590 0013 2869	
E TRAVERS MITCHELL	9/1/2010	7110 6605 9590 0012 1269	YES
E. HUNTER STONE II TRUST	9/1/2010	7110 6605 9590 0012 1276	YES
EDGAR CLAY GRIFFIN JR	9/1/2010	7110 6605 9590 0012 1283	YES
EDGAR JOHN LAYLAND	9/15/2010	7110 6605 9590 0013 3439	YES
EDMUND M. LONGCOPE	9/1/2010	7110 6605 9590 0012 1290	
EDNA MORRELL LIVING TRUST	9/1/2010	7110 6605 9590 0012 1306	YES
EDWARD C TATUM TRUST	9/1/2010	7110 6605 9590 0012 1313	Notification Returned
EDWARD CALVIN	9/1/2010	7110 6605 9590 0012 1320	YES
EDWARD CHARLES BAUMANN	9/1/2010	7110 6605 9590 0012 1337	YES
EDWARD ISERN JR	9/1/2010	7110 6605 9590 0012 1344	YES
EDWARD L RYERSON JR TRUST	9/1/2010	7110 6605 9590 0012 1351	YES
EDWARD LAYLAND MYATT JR	9/15/2010	7110 6605 9590 0013 3446	YES
EDWARD R ATWILL ESTATE	9/1/2010	7110 6605 9590 0012 1368	YES
EDWARD WINTERER &	9/1/2010	7110 6605 9590 0012 1375	YES
EILEEN MEDINA GARRIDO	9/1/2010	7110 6605 9590 0012 1382	Unclaimed
ELAINE LYONS	9/1/2010	7110 6605 9590 0012 1399	YES
ELEANOR G HAND	9/1/2010	7110 6605 9590 0012 1405	YES

Mesaverde / Dakota Owners Notified / Green Card Receipts

R-10786, R-10694, R-10695, R-10696, R-10476-B, R-10770, R-11187, R-10697, R-10771, R-10692

Owner Name	Date Mailed	Certified Number	Certified Green Card Received
ELEANOR G TRUJILLO	9/15/2010	7110 6605 9590 0013 2876	YES
ELEANOR I DUNNE FAMILY TR	9/1/2010	7110 6605 9590 0012 1412	YES
ELIZABETH BLACK MONTGOMERY	9/1/2010	7110 6605 9590 0012 1429	YES
ELIZABETH GOODWIN REESE	9/1/2010	7110 6605 9590 0012 1436	YES
ELIZABETH H LUND ROYALTY TRUST	9/1/2010	7110 6605 9590 0012 1443	YES
ELIZABETH H WHITE FAMILY TRUST	9/1/2010	7110 6605 9590 0012 1450	YES
ELIZABETH JO KEENOM	9/1/2010	7110 6605 9590 0012 1467	YES
ELIZABETH MARIE O'HORNETT GILTHVEDT	9/15/2010	7110 6605 9590 0013 3453	YES
ELIZABETH N MESSECA	9/1/2010	7110 6605 9590 0012 1474	YES
ELIZABETH P FLETCHER	9/1/2010	7110 6605 9590 0013 5013	REMAILED
ELIZABETH S BAYER	9/1/2010	7110 6605 9590 0012 1498	YES
ELIZABETH SIBOLE	9/15/2010	7110 6605 9590 0013 3460	YES
ELIZABETH T ISHAM TRUST	9/1/2010	7110 6605 9590 0012 1504	YES
ELIZABETH TURNER CALLOWAY	9/1/2010	7110 6605 9590 0012 1511	YES
ELLEN L MARBERRY	9/15/2010	7110 6605 9590 0013 2883	YES
ELLEN NICKSON BROWN TEST TRUST	9/1/2010	7110 6605 9590 0012 1528	YES
ELLIOT E & CHARLENE M HATHEWAY REV TR	9/15/2010	7110 6605 9590 0013 3477	YES
ELLIS RUDY LTD	9/1/2010	7110 6605 9590 0012 1535	YES
ELSR LP	9/1/2010	7110 6605 9590 0012 1542	YES
EMANUEL VARICAK	9/1/2010	7110 6605 9590 0012 1559	YES
EMILIE M HARDIE	9/1/2010	7110 6605 9590 0012 1566	YES
EMILIE SWINNEY	9/1/2010	7110 6605 9590 0012 1573	YES
EMILY GRAMBLING	9/1/2010	7110 6605 9590 0012 1580	YES
EMILY LOBATO	9/1/2010	7110 6605 9590 0012 1597	YES
EMOGENE L TREXEL	9/1/2010	7110 6605 9590 0012 1603	YES
ENERGEN RESOURCES CORPORATION	9/1/2010	7110 6605 9590 0012 1610	YES
ERIK WOLF	9/1/2010	7110 6605 9590 0012 1627	YES
ERNEST MARTINEZ	9/1/2010	7110 6605 9590 0012 1634	YES
EST GEORGE ANN BERGH	9/1/2010	7110 6605 9590 0012 1641	YES
EUGENIA DAVANT WILSON	9/1/2010	7110 6605 9590 0012 1658	YES
EULA MAY JOHNSTON TRUST 661	9/1/2010	7110 6605 9590 0012 1665	YES
EVELYN BLANCHE SIMMONS TR UTA JUL 28 87	9/1/2010	7110 6605 9590 0012 1672	YES
F F WEBSTER IV TRUST EST & TR	9/1/2010	7110 6605 9590 0012 1689	YES
F J ODENDAHL INVESTMENTS INC	9/1/2010	7110 6605 9590 0012 1696	YES
F LOUIS TUCKER JR	9/1/2010	7110 6605 9590 0012 1702	YES
FANNIE SINGLETON	9/1/2010	7110 6605 9590 0012 1719	YES
FASKEN FOUNDATION	9/1/2010	7110 6605 9590 0012 1726	YES
FHW OIL & GAS LTD	9/1/2010	7110 6605 9590 0012 1733	YES
FISHER MAYS INC	9/1/2010	7110 6605 9590 0012 1740	YES
FITTING FAMILY PARTNERSHIP LLC	9/1/2010	7110 6605 9590 0012 1757	YES
FITTING-CHESNUT	9/1/2010	7110 6605 9590 0012 1764	YES
FJJD LIMITED PARTNERSHIP	9/1/2010	7110 6605 9590 0012 1771	YES
FLORENCIA EXPLORATION INC	9/1/2010	7110 6605 9590 0012 1788	YES
FORCENERGY ONSHORE INC	9/1/2010	7110 6605 9590 0012 1795	YES
FOREST OIL CORP	9/1/2010	7110 6605 9590 0012 1801	YES
FOSTER MORRELL TRUST	9/1/2010	7110 6605 9590 0012 1818	YES
FOUR STAR OIL & GAS COMPANY	9/1/2010	7110 6605 9590 0012 1825	YES
FRANCES LAYLAND	9/15/2010	7110 6605 9590 0013 3484	YES
FRANCILLE TROIANI	9/1/2010	7110 6605 9590 0012 1832	YES

Mesaverde / Dakota Owners Notified / Green Card Receipts

R-10786, R-10694, R-10695, R-10696, R-10476-B, R-10770, R-11187, R-10697, R-10771, R-10692

Owner Name	Date Mailed	Certified Number	Certified Green Card Received
FRANCIS LEROY CANDELARIA	9/1/2010	7110 6605 9590 0012 1849	YES
FRANK A CRONICAN SR & HARRIETT BATES	9/1/2010	7110 6605 9590 0012 1856	YES
FRANK A POTENZIANI	9/1/2010	7110 6605 9590 0012 1863	YES
FRANK ANDREW FASKEN	9/1/2010	7110 6605 9590 0012 1870	YES
FRANK B GERSBACH & FRANK B GERSBACH AND MAE B GERSBACH	9/1/2010	7110 6605 9590 0012 1887	Notification Returned Unclaimed
FRANK CRONICAN SR	9/1/2010	7110 6605 9590 0012 1900	YES
FRANK J WILLIAMSEN	9/1/2010	7110 6605 9590 0012 1917	
FRANK M. ELAM	9/1/2010	7110 6605 9590 0012 1924	YES
FRED E TURNER	9/1/2010	7110 6605 9590 0012 1931	YES
FRED ELDON SPENCER	9/1/2010	7110 6605 9590 0012 1948	YES
FREDDA LOUISE BLACK	9/1/2010	7110 6605 9590 0012 1955	YES
FREDERIC L KIRGIS	9/15/2010	7110 6605 9590 0013 3491	YES
FREDERICK F WEBSTER JR SELF DECL REV TR	9/1/2010	7110 6605 9590 0012 1962	YES
FREDERICKSBURG ROYALTY LTD	9/1/2010	7110 6605 9590 0012 1979	YES
FREEMAN RODNEY FITTING	9/1/2010	7110 6605 9590 0012 1986	
FRIEDA M HOLT	9/1/2010	7110 6605 9590 0012 1993	YES
FRIEDA M HOLT	9/1/2010	7110 6605 9590 0012 2006	YES
G. ELEANOR TRUJILLO	9/1/2010	7110 6605 9590 0012 2013	YES
G. R. FASKEN	9/1/2010	7110 6605 9590 0012 2020	YES
GAIL A DURHAM	9/1/2010	7110 6605 9590 0012 2037	YES
GAIL F. MOULTON, JR.	9/1/2010	7110 6605 9590 0012 2044	YES
GARCIA FAMILY TRUST	9/1/2010	7110 6605 9590 0012 2051	YES
GARY C ANDERSON	9/1/2010	7110 6605 9590 0012 2068	YES
GARY L SMITH ESTATE	9/1/2010	7110 6605 9590 0012 2075	YES
GARY R JOHNSON	9/1/2010	7110 6605 9590 0012 2082	YES
GASCONADE OIL COMPANY	9/1/2010	7110 6605 9590 0012 2099	YES
GAYL ANN CARLBERG AS HER SEPARATE	9/1/2010	7110 6605 9590 0012 2105	YES
GEISLER FAMILY LIMITED PARTNERSHIP	9/1/2010	7110 6605 9590 0012 2112	YES
GEMOCO LTD	9/1/2010	7110 6605 9590 0012 2129	YES
GENEVA T JOHNSON	9/1/2010	7110 6605 9590 0012 2136	Notification Returned
GENEVIEVE A. RINERSON	9/1/2010	7110 6605 9590 0012 2143	YES
GENEVIEVE CANDELARIA	9/1/2010	7110 6605 9590 0012 2150	YES
GEOFFREY A VANDEWART	9/1/2010	7110 6605 9590 0012 2167	YES
GEORGANNE MENGEL QUIER	9/1/2010	7110 6605 9590 0012 2174	YES
GEORGE A RANNEY ESTATE	9/1/2010	7110 6605 9590 0012 2181	YES
GEORGE E ESPINOSA	9/15/2010	7110 6605 9590 0013 3507	YES
GEORGE H SMITH	9/1/2010	7110 6605 9590 0012 2198	YES
GEORGE L PALMER	9/1/2010	7110 6605 9590 0012 2204	YES
GEORGE MARTINEZ	9/15/2010	7110 6605 9590 0013 3514	YES
GEORGE REED BRAINARD	9/1/2010	7110 6605 9590 0012 2211	YES
GEORGE S ISHAM NONGST MARITAL TRST	9/1/2010	7110 6605 9590 0012 2228	YES
GEORGE W UMBACH	9/1/2010	7110 6605 9590 0012 2235	YES
GEORGEANNE NILSEN TTEE	9/15/2010	7110 6605 9590 0013 3521	YES
GERALD F. GAUSLIN	9/1/2010	7110 6605 9590 0012 2242	YES
GERALD G. WILLIAMS & ALTA JANE WILLIAMS	9/1/2010	7110 6605 9590 0012 2259	YES
GERALDINE H MCFADDEN	9/15/2010	7110 6605 9590 0013 3538	YES
GERALDINE KAREN STEWART	9/15/2010	7110 6605 9590 0013 2890	YES
GERTRUDE A GALLEGOS	9/15/2010	7110 6605 9590 0013 2906	YES

Mesaverde / Dakota Owners Notified / Green Card Receipts

R-10786, R-10694, R-10695, R-10696, R-10476-B, R-10770, R-11187, R-10697, R-10771, R-10692

Owner Name	Date Mailed	Certified Number	Certified Green Card Received
GIBSON FAMILY TRUST	9/1/2010	7110 6605 9590 0012 2266	YES
GLADYS M RIDDLE INTER-VIVOS TRUST	9/1/2010	7110 6605 9590 0012 2273	YES
GLADYS WATFORD TRUST	9/1/2010	7110 6605 9590 0012 2280	YES
GLENN HEINTSCHEL	9/1/2010	7110 6605 9590 0012 2297	YES
GLENN R GENTLE LVG TRUST DTD FEB 20 1997	9/1/2010	7110 6605 9590 0012 2303	YES
GLORIA M KUBIK	9/1/2010	7110 6605 9590 0012 2310	YES
GLORIA MILAN	9/1/2010	7110 6605 9590 0012 2327	YES
GLORIA WYNNE LANKFORD	9/1/2010	7110 6605 9590 0012 2334	YES
GMGF OIL ACCT	9/1/2010	7110 6605 9590 0012 2341	YES
GOMEZ TRUST DTD FEB 20 1997	9/1/2010	7110 6605 9590 0012 2358	YES
GORDON E DAVENPORT JR	9/1/2010	7110 6605 9590 0012 2365	YES
GORHAM PROPERTIES LLC	9/1/2010	7110 6605 9590 0012 2372	YES
GRAHAM L GOTTSSTEIN	9/1/2010	7110 6605 9590 0012 2389	YES
GRAY REVOC TR UTD MAY 19 1998	9/1/2010	7110 6605 9590 0012 2396	YES
GRAYFORE PARTNERS LP	9/1/2010	7110 6605 9590 0012 2402	YES
GREAT HERITAGE PROPERTIES LLC	9/1/2010	7110 6605 9590 0012 2419	YES
GREG IRETON AND JO ANN W IRETON	9/1/2010	7110 6605 9590 0012 2426	YES
GREGORY MYER	9/1/2010	7110 6605 9590 0012 2433	YES
GREGORY WALL	9/1/2010	7110 6605 9590 0012 2440	YES
GRETCHEN A HALL TRUST U/T/A	9/1/2010	7110 6605 9590 0012 2457	YES
GRETCHEN KALB MORAN	9/1/2010	7110 6605 9590 0012 2464	YES
GROVER BROTHERS LTD PARTNERSHIP	9/1/2010	7110 6605 9590 0012 2471	YES
GROVER FAMILY L P	9/1/2010	7110 6605 9590 0012 2488	
GROVER FAMILY L P	9/1/2010	7110 6605 9590 0012 2495	YES
GURDON RANSOM MILLER III	9/1/2010	7110 6605 9590 0012 2501	YES
GUY DAVID WARD	9/1/2010	7110 6605 9590 0012 2518	YES
GUY R BRAINARD JR TR DTD SEPT 9 1982	9/1/2010	7110 6605 9590 0012 2525	YES
GUY R CAMPBELL	9/1/2010	7110 6605 9590 0012 2532	YES
H H PHILLIPS JR ESTATE	9/1/2010	7110 6605 9590 0012 2549	YES
H K RIDDLE	9/1/2010	7110 6605 9590 0012 2556	Notification Returned
H LIMITED PARTNERSHIP	9/1/2010	7110 6605 9590 0012 2563	YES
HALLETT MENGEL LUSCOMBE	9/1/2010	7110 6605 9590 0012 2570	YES
HAMMEL SURVIVORS TRUST DTD 12/7/01	9/1/2010	7110 6605 9590 0012 2587	YES
HANNAH E NORDHAUS	9/1/2010	7110 6605 9590 0012 2594	YES
HANNIFIN FAMILY TRUST	9/1/2010	7110 6605 9590 0012 2600	YES
HANSON MCBRIDE PETROLEUM CO LLC	9/1/2010	7110 6605 9590 0012 2617	YES
HARCO LIMITED PARTNERSHIP	9/1/2010	7110 6605 9590 0012 2624	YES
HAROLD D CARTER TRUSTEE	9/1/2010	7110 6605 9590 0012 2631	Notification Returned
HAROLD E PALMER	9/1/2010	7110 6605 9590 0012 2648	YES
HAROLD K MORGAN	9/1/2010	7110 6605 9590 0012 2655	
HAROLD RICHARD COOPER	9/1/2010	7110 6605 9590 0012 2662	YES
HARRIET M BUCHENAU LIVING TRUST	9/1/2010	7110 6605 9590 0012 2679	YES
HARRINGTON ENERGY RESOURCES LP	9/1/2010	7110 6605 9590 0012 2686	YES
HARRINGTON SOUTHWEST ENERGY LP	9/1/2010	7110 6605 9590 0012 2693	YES
HARRY D PORTER TRUST U/W FBO ANNA CROSBY	9/15/2010	7110 6605 9590 0013 2913	YES
HARRY D PORTER TRUST U/W FBO JOHN PORTER	9/15/2010	7110 6605 9590 0013 2920	YES
HATHEWAY PARTNERS LLC OK LLC	9/15/2010	7110 6605 9590 0013 3545	YES
HEATHER M KALB	9/1/2010	7110 6605 9590 0012 2709	YES
HENRY C HESS	9/1/2010	7110 6605 9590 0012 2716	YES

Mesaverde / Dakota Owners Notified / Green Card Receipts

R-10786, R-10694, R-10695, R-10696, R-10476-B, R-10770, R-11187, R-10697, R-10771, R-10692

Owner Name	Date Mailed	Certified Number	Certified Green Card Received
HENRY P ISHAM III	9/1/2010	7110 6605 9590 0012 2730	YES
HENRY RICHARD BRACK	9/1/2010	7110 6605 9590 0012 2747	
HERBERT J NEWCOMB JR	9/15/2010	7110 6605 9590 0013 3552	YES
HILLS HYDROCARBONS LP	9/1/2010	7110 6605 9590 0012 2754	YES
HOLLY BISHOP	9/1/2010	7110 6605 9590 0012 2761	YES
HOME BURTIS TR DTD JUNE 7 2004	9/1/2010	7110 6605 9590 0012 2778	YES
HOMER F JOHNSON	9/1/2010	7110 6605 9590 0012 2785	YES
HONUA OLA MAU LLC	9/1/2010	7110 6605 9590 0012 2792	YES
HOPE G SIMPSON	9/1/2010	7110 6605 9590 0012 2808	YES
HOPE S KELLY LIVING TRUST	9/1/2010	7110 6605 9590 0012 2815	YES
HORIZON ROYALTIES LLC	9/1/2010	7110 6605 9590 0012 2822	YES
HOWARD B SIMPSON ET AL RESIDUARY	9/1/2010	7110 6605 9590 0012 2839	
HOWELL GRANDCHILDRENS TRUST ESTATE	9/1/2010	7110 6605 9590 0012 2846	YES
HUGH JAMES HALL JR	9/1/2010	7110 6605 9590 0012 2853	YES
HUGH MCMILLAN	9/1/2010	7110 6605 9590 0012 2860	YES
HUNTINGTON CANYON LARGO LLC	9/1/2010	7110 6605 9590 0012 2877	YES
ICON PETROLEUM INC	9/1/2010	7110 6605 9590 0012 2884	YES
IDA WALL HANCOCK	9/1/2010	7110 6605 9590 0012 2891	YES
INDIANA UNIVERSITY FOUNDATION	9/1/2010	7110 6605 9590 0012 2907	YES
INEZ TRUBY REVOCABLE TRUST	9/1/2010	7110 6605 9590 0012 2914	YES
IRIS ANN DAHARSH	9/1/2010	7110 6605 9590 0012 2921	YES
IRISH FAMILY PROPERTIES LLC	9/1/2010	7110 6605 9590 0012 2938	YES
ISABELL GARCIA	9/15/2010	7110 6605 9590 0013 2937	YES
J BRYAN STEPHENSON	9/1/2010	7110 6605 9590 0012 2945	YES
J BRYCE WYNNE LVG TRUST	9/1/2010	7110 6605 9590 0012 2952	
J FIDEL CANDELARIA & CORDELIA	9/1/2010	7110 6605 9590 0012 2969	YES
J GLENN TURNER JR	9/1/2010	7110 6605 9590 0012 2976	YES
J GREGORY MERRION & RITA V MERRION	9/1/2010	7110 6605 9590 0012 2983	YES
J ROBERT JONES CHARITABLE TRUST	9/1/2010	7110 6605 9590 0012 2990	YES
J&M RAYMOND LTD	9/1/2010	7110 6605 9590 0012 3003	YES
J. CHRIS CANDELARIA	9/1/2010	7110 6605 9590 0012 3010	YES
JABCO LLP	9/1/2010	7110 6605 9590 0012 3027	YES
JACK B WILKINSON JR	9/1/2010	7110 6605 9590 0012 3034	YES
JACQUEZ WIESER TRUST	9/1/2010	7110 6605 9590 0012 3041	YES
JAKIE L MOSS	9/1/2010	7110 6605 9590 0012 3058	YES
JAMES B MACINTOSH	9/1/2010	7110 6605 9590 0012 3065	YES
JAMES BEATTY NOLAND	9/1/2010	7110 6605 9590 0012 3072	YES
JAMES DUFFIN	9/1/2010	7110 6605 9590 0012 3089	Unclaimed
JAMES E DAVANT DVM	9/1/2010	7110 6605 9590 0012 3096	YES
JAMES E JACKS	9/1/2010	7110 6605 9590 0012 3102	YES
JAMES FITZGERALD III TRUST A	9/1/2010	7110 6605 9590 0012 3119	YES
JAMES G HOHENSTEIN	9/1/2010	7110 6605 9590 0012 3126	YES
JAMES H ATWILL	9/1/2010	7110 6605 9590 0012 3133	YES
JAMES H ESSMAN	9/1/2010	7110 6605 9590 0012 3140	YES
JAMES H HAMMONTREE	9/1/2010	7110 6605 9590 0012 3157	YES
JAMES J HILL III REVOCABLE TRUST	9/1/2010	7110 6605 9590 0012 3164	YES
JAMES J RUBOW & NICKOLA A RUBOW JOINT	9/1/2010	7110 6605 9590 0012 3171	YES
JAMES KESSLER	9/1/2010	7110 6605 9590 0012 3188	YES
JAMES L FASHING	9/1/2010	7110 6605 9590 0012 3195	

Mesaverde / Dakota Owners Notified / Green Card Receipts

R-10786, R-10694, R-10695, R-10696, R-10476-B, R-10770, R-11187, R-10697, R-10771, R-10692

Owner Name	Date Mailed	Certified Number	Certified Green Card Received
JAMES LOUIS HILL	9/15/2010	7110 6605 9590 0013 3569	YES
JAMES MICHAEL NOLAND	9/1/2010	7110 6605 9590 0012 3201	YES
JAMES P M ROACH	9/1/2010	7110 6605 9590 0012 3218	
JAMES R LEETON JR	9/1/2010	7110 6605 9590 0012 3225	YES
JAMES R PAYNE & JEAN PAYNE	9/1/2010	7110 6605 9590 0012 3232	YES
JAMES ROBERT BEAMON	9/1/2010	7110 6605 9590 0012 3249	YES
JAMES SIMPSON III ET AL RESIDUARY	9/1/2010	7110 6605 9590 0012 3256	
JAMES W CHILDRESS	9/1/2010	7110 6605 9590 0012 3263	YES
JAMES WENDELL WEST	9/1/2010	7110 6605 9590 0012 3270	YES
JANA RAE STEELE	9/1/2010	7110 6605 9590 0012 3287	YES
JANE ANN BOND WHEELER	9/1/2010	7110 6605 9590 0012 3294	YES
JANE C. GORDEN	9/1/2010	7110 6605 9590 0012 3300	YES
JANE CLAIRE ROBERSON	9/1/2010	7110 6605 9590 0012 3317	YES
JANE PHILLIPS LADOUCEUR	9/1/2010	7110 6605 9590 0012 3324	YES
JANET B SELBE	9/1/2010	7110 6605 9590 0012 3331	YES
JANET ELIZABETH VOGT	9/1/2010	7110 6605 9590 0012 3348	YES
JANET SCHWARTZ KRAFT	9/15/2010	7110 6605 9590 0013 3576	YES
JANICE P CAMPBELL	9/1/2010	7110 6605 9590 0012 3355	YES
JAY GOTTSTEIN TRUST NOV 11 1992	9/1/2010	7110 6605 9590 0012 3362	YES
JAYNE GRIFFITH	9/1/2010	7110 6605 9590 0012 3379	YES
JB RIVERS JR	9/15/2010	7110 6605 9590 0013 3583	YES
JEAN ASHLEY WARD CARTER	9/1/2010	7110 6605 9590 0012 3386	Unclaimed
JEAN F LOEPKEY	9/1/2010	7110 6605 9590 0012 3393	YES
JEAN J JAEGGI	9/1/2010	7110 6605 9590 0012 3409	YES
JEFF H. CALLOW	9/1/2010	7110 6605 9590 0012 3416	YES
JEFFREY CASWELL NEAL	9/1/2010	7110 6605 9590 0012 3423	YES
JENNIFER AHO TR	9/15/2010	7110 6605 9590 0013 2944	YES
JENNIFER ERIN LAMB	9/1/2010	7110 6605 9590 0012 3430	YES
JEREMY S DAVIS	9/1/2010	7110 6605 9590 0012 3447	Unclaimed
JERRY J ANDREW	9/1/2010	7110 6605 9590 0012 3454	YES
JESSE S RAYBOURN	9/1/2010	7110 6605 9590 0012 3461	YES
JESSICA DAVANT STANLEY	9/1/2010	7110 6605 9590 0012 3478	YES
JESSIE A. DENNIS	9/1/2010	7110 6605 9590 0012 3485	YES
JESSIE L JOHNSON	9/1/2010	7110 6605 9590 0012 3492	
JESSIE LEE JOHNSON	9/15/2010	7110 6605 9590 0013 2951	
JESSIE MAE WAKELAND	9/15/2010	7110 6605 9590 0013 3590	Notification Returned
JESSIE S HASLER ET AL RESIDUARY TR	9/1/2010	7110 6605 9590 0012 3508	
JILL E CORNELL	9/1/2010	7110 6605 9590 0012 3515	YES
JILL M SOENS	9/1/2010	7110 6605 9590 0012 3522	YES
JIMMY L MALONE	9/1/2010	7110 6605 9590 0012 3539	YES
JMH OIL INC	9/1/2010	7110 6605 9590 0012 3546	YES
JO ANN DENITO	9/1/2010	7110 6605 9590 0012 3553	YES
JO ELLEN SERRANO	9/1/2010	7110 6605 9590 0012 3560	YES
JOAN A CORNELL	9/1/2010	7110 6605 9590 0012 3577	YES
JOAN BEATTY COZBY	9/1/2010	7110 6605 9590 0012 3584	YES
JOAN DERRY	9/1/2010	7110 6605 9590 0012 3591	Forward Exp. 10-4-10
JOAN E. MYER	9/1/2010	7110 6605 9590 0012 3607	YES
JOAN MATTHEWS	9/1/2010	7110 6605 9590 0012 3614	YES
JOANN BRIGGS	9/1/2010	7110 6605 9590 0012 3621	YES

Mesaverde / Dakota Owners Notified / Green Card Receipts
R-10786, R-10694, R-10695, R-10696, R-10476-B, R-10770, R-11187, R-10697, R-10771, R-10692

Owner Name	Date Mailed	Certified Number	Certified Green Card Received
JOANN DENNIS DENITTO	9/1/2010	7110 6605 9590 0012 3638	YES
JOANNE C LORENCE	9/1/2010	7110 6605 9590 0012 3645	YES
JOANNE CALLAN	9/1/2010	7110 6605 9590 0012 3652	YES
JOE F ELLEDGE	9/1/2010	7110 6605 9590 0012 3669	YES
JOE G JAQUEZ & GREGORITA G JAQUEZ	9/1/2010	7110 6605 9590 0012 3676	YES
JOE LOPEZ ESTATE	9/1/2010	7110 6605 9590 0012 3683	YES
JOE MARTINEZ	9/1/2010	7110 6605 9590 0012 3690	Unclaimed
JOE P TRUJILLO	9/1/2010	7110 6605 9590 0012 3706	YES
JOE RENEE ABBOTT	9/1/2010	7110 6605 9590 0012 3713	YES
JOHN A. WALL	9/1/2010	7110 6605 9590 0012 3720	YES
JOHN B ALLINSON JR	9/1/2010	7110 6605 9590 0012 3737	YES
JOHN B PIERCE	9/1/2010	7110 6605 9590 0012 3744	YES
JOHN BERNARD MORGAN	9/1/2010	7110 6605 9590 0012 3751	Unclaimed
JOHN C HARRINGTON JR	9/15/2010	7110 6605 9590 0013 3606	YES
JOHN C WYNNE & DIANE R WYNNE TRUST	9/1/2010	7110 6605 9590 0012 3768	YES
JOHN DAVENPORT	9/1/2010	7110 6605 9590 0012 3775	YES
JOHN DAVID PRESTON	9/1/2010	7110 6605 9590 0012 3782	YES
JOHN DICKEY	9/1/2010	7110 6605 9590 0012 3799	YES
JOHN GRAMBLING	9/1/2010	7110 6605 9590 0012 3805	YES
JOHN HUNTER JONES	9/1/2010	7110 6605 9590 0012 3812	YES
JOHN I SHAW JR TRUST UAD JAN 2 1957	9/1/2010	7110 6605 9590 0012 3829	YES
JOHN J WAFER	9/1/2010	7110 6605 9590 0012 3836	Unclaimed
JOHN L GRAY	9/1/2010	7110 6605 9590 0012 3843	YES
JOHN L MOSS	9/1/2010	7110 6605 9590 0012 3850	YES
JOHN L TURNER	9/1/2010	7110 6605 9590 0012 3867	YES
JOHN L. LANCASTER, III	9/1/2010	7110 6605 9590 0012 3874	YES
JOHN LEE TURNER	9/1/2010	7110 6605 9590 0012 3881	YES
JOHN MEADE	9/1/2010	7110 6605 9590 0012 3898	YES
JOHN P CUNNINGHAM	9/1/2010	7110 6605 9590 0012 3904	YES
JOHN PATRICK WILLIAMS LIV TR DTD 8/26/03	9/1/2010	7110 6605 9590 0012 3911	YES
JOHN PETTUS	9/1/2010	7110 6605 9590 0012 3928	YES
JOHN R BRENNAND JR	9/1/2010	7110 6605 9590 0012 3935	YES
JOHN S BROWN JR	9/1/2010	7110 6605 9590 0012 3942	YES
JOHN S CATRON REVOCABLE TRUST	9/1/2010	7110 6605 9590 0012 3959	YES
JOHN S ROACH	9/1/2010	7110 6605 9590 0012 3966	Notification Returned
JOHN S WATSON	9/1/2010	7110 6605 9590 0012 3973	YES
JOHN SHEPHERD BRAINARD	9/1/2010	7110 6605 9590 0012 3980	YES
JOHN W BARRINGER	9/1/2010	7110 6605 9590 0012 3997	
JOHNNY MARTINEZ	9/1/2010	7110 6605 9590 0012 4000	YES
JON E KALB	9/1/2010	7110 6605 9590 0012 4017	YES
JON J ANDERSON	9/1/2010	7110 6605 9590 0012 4024	YES
JORGENSEN FAMILY TRUST JUNE 7 1996	9/1/2010	7110 6605 9590 0012 4031	YES
JOSE E & CLARA E GOMEZ LVG TR 4 18 86	9/1/2010	7110 6605 9590 0012 4048	YES
JOSE E GOMEZ TRUST DTD 9/8/2004	9/1/2010	7110 6605 9590 0012 4055	YES
JOSE M SANCHEZ	9/1/2010	7110 6605 9590 0012 4062	YES
JOSE MARIA ABEYTA	9/15/2010	7110 6605 9590 0013 2968	Deceased
JOSE N SENA	9/1/2010	7110 6605 9590 0012 4079	YES
JOSE R HERNANDEZ	9/15/2010	7110 6605 9590 0013 3613	YES
JOSEPH C JASTRZEMBSKI	9/1/2010	7110 6605 9590 0012 4086	YES

Mesaverde / Dakota Owners Notified / Green Card Receipts

R-10786, R-10694, R-10695, R-10696, R-10476-B, R-10770, R-11187, R-10697, R-10771, R-10692

Owner Name	Date Mailed	Certified Number	Certified Green Card Received
JOSEPH MARTINEZ	9/15/2010	7110 6605 9590 0013 3620	YES
JOSEPH RICHARD NICKSON TRUST	9/1/2010	7110 6605 9590 0012 4093	
JOSEPH W ESPINOSA	9/15/2010	7110 6605 9590 0013 3637	YES
JOSHUA HAUSER	9/1/2010	7110 6605 9590 0012 4109	YES
JOYCE K ATTEBURY	9/1/2010	7110 6605 9590 0012 4116	
JPT FAMILY JV 1	9/1/2010	7110 6605 9590 0012 4123	YES
JRB INVESTMENTS LLC	9/15/2010	7110 6605 9590 0013 2975	YES
JUAN C GOMEZ JR	9/1/2010	7110 6605 9590 0012 4130	YES
JUAN R MONTANO REVOCABLE TRUST	9/1/2010	7110 6605 9590 0012 4147	YES
JUANITA V PETERSON	9/1/2010	7110 6605 9590 0012 4154	YES
JUANITA WALTERS	9/15/2010	7110 6605 9590 0013 3644	YES
JUDITH GENE HANTTULA	9/1/2010	7110 6605 9590 0012 4161	YES
JUDITH SHAW TRUST	9/1/2010	7110 6605 9590 0012 4178	YES
JUDY A LAYLAND	9/15/2010	7110 6605 9590 0013 3651	YES
JULIE B WYCKOFF	9/1/2010	7110 6605 9590 0012 4185	Notification Returned
JULIE SCOTT MCBRIDE	9/1/2010	7110 6605 9590 0012 4192	YES
JUNE SIMMONS LIVELY	9/1/2010	7110 6605 9590 0012 4208	YES
KAREN LEE MCLARTY	9/1/2010	7110 6605 9590 0012 4215	YES
KAREN Y GRIFFITH PETERS	9/1/2010	7110 6605 9590 0012 4222	YES
KARLEEN E UPHOLD TR DTD 07/10/07	9/15/2010	7110 6605 9590 0013 2982	YES
KATHARINE B DICKSON	9/1/2010	7110 6605 9590 0012 4239	YES
KATHERINE BUCKLAND	9/1/2010	7110 6605 9590 0012 4246	YES
KATHERINE KOLLIKER MCINTYRE	9/1/2010	7110 6605 9590 0012 4253	
KATHERINE WEINSTEIN	9/15/2010	7110 6605 9590 0013 2999	YES
KATHLEEN COLWILL	9/1/2010	7110 6605 9590 0012 4260	YES
KATHLEEN F LIPPOLD	9/1/2010	7110 6605 9590 0012 4277	YES
KATHLEEN J BROWN REV TR DTD 7/20/05	9/15/2010	7110 6605 9590 0013 3668	YES
KATHLEEN M MCLANE TR DEC 1 1976	9/1/2010	7110 6605 9590 0012 4284	YES
KATHLEEN QUINN	9/1/2010	7110 6605 9590 0012 4291	YES
KATHLYN H GIBSON ESTATE	9/1/2010	7110 6605 9590 0012 4307	YES
KATHRIN BOND MALONE	9/1/2010	7110 6605 9590 0012 4314	YES
KATHRYN DAVANT DODSON	9/1/2010	7110 6605 9590 0012 4321	YES
KATHRYN DAVANT HIGGNS	9/1/2010	7110 6605 9590 0012 4338	
KATHRYN HANNIFIN MCCORMICK ESTATE	9/1/2010	7110 6605 9590 0012 4345	YES
KATHRYN L CAMPBELL	9/1/2010	7110 6605 9590 0012 4352	YES
KATHY DUFFIN MCKNAB	9/1/2010	7110 6605 9590 0012 4369	YES
KAY B GUNDLACH	9/1/2010	7110 6605 9590 0012 4376	YES
KAY BETH STAVLEY	9/1/2010	7110 6605 9590 0012 4383	YES
KAY CUNNINGHAM MAGRI	9/1/2010	7110 6605 9590 0012 4390	YES
KAY DIANE BOWLES TRUST NOV 29 2007	9/1/2010	7110 6605 9590 0012 4406	YES
KAY TORRANCE KENYON	9/15/2010	7110 6605 9590 0013 3002	
KELLEY A MURRELL	9/1/2010	7110 6605 9590 0012 4413	YES
KELLY CHRISTINE LAMB	9/1/2010	7110 6605 9590 0012 4420	YES
KELLY FITTING STEWART	9/1/2010	7110 6605 9590 0012 4437	YES
KENDALL SWINFORD	9/15/2010	7110 6605 9590 0013 3019	YES
KENN SCHMIDT	9/1/2010	7110 6605 9590 0012 4444	YES
KENNEDY MINERALS LTD	9/1/2010	7110 6605 9590 0012 4451	YES
KENNETH & ELSIE BLANCETT LVG TR	9/1/2010	7110 6605 9590 0012 4468	YES
KENNETH ROBERT SCHMIDT	9/1/2010	7110 6605 9590 0012 4475	YES

Mesaverde / Dakota Owners Notified / Green Card Receipts

R-10786, R-10694, R-10695, R-10696, R-10476-B, R-10770, R-11187, R-10697, R-10771, R-10692

Owner Name	Date Mailed	Certified Number	Certified Green Card Received
KEVIN K LEONARD	9/1/2010	7110 6605 9590 0012 4482	YES
KEVIN MICHAEL O'HORNETT	9/15/2010	7110 6605 9590 0013 3675	YES
KEYES BABER PROPERTIES	9/1/2010	7110 6605 9590 0012 4499	YES
KHRISTI ELAINE FITTING MORITZ	9/1/2010	7110 6605 9590 0012 4505	YES
KIM MCKIM DUNN	9/1/2010	7110 6605 9590 0012 4512	YES
KIMBELL OIL CO OF TEXAS	9/1/2010	7110 6605 9590 0012 4529	YES
KIMBERLEE J BENART	9/15/2010	7110 6605 9590 0013 3682	YES
KOCH INDUSTRIES INC	9/1/2010	7110 6605 9590 0012 4536	YES
KRIS ANN SHINE	9/1/2010	7110 6605 9590 0012 4543	YES
L DORIS WILLIAMS TRUST	9/1/2010	7110 6605 9590 0012 4550	
L GRADEN & BETTY WEINLAND FAMILY TRUST	9/1/2010	7110 6605 9590 0012 4567	YES
L J & R R MONEY 1990 TR	9/1/2010	7110 6605 9590 0012 4574	
L KEITH WAYT FAMILY TRUST	9/1/2010	7110 6605 9590 0012 4581	YES
LA FAMILIA DE LOS CANDELARIAS REV TRUST	9/1/2010	7110 6605 9590 0012 4598	YES
LAKEY IRREVOCABLE MINERAL TRUST	9/1/2010	7110 6605 9590 0012 4604	YES
LANCE REEMTSMA	9/1/2010	7110 6605 9590 0012 4611	YES
LANGDON C HARRISON	9/1/2010	7110 6605 9590 0012 4628	
LANGDON D HARRISON REVOC TRUST B	9/1/2010	7110 6605 9590 0012 4635	YES
LARRY SMITH	9/1/2010	7110 6605 9590 0012 4642	YES
LAS COLINAS MINERALS LP	9/1/2010	7110 6605 9590 0012 4659	YES
LASALLE ADAMS FUND	9/1/2010	7110 6605 9590 0012 4666	YES
LATTNER HOLDING LLC	9/1/2010	7110 6605 9590 0012 4673	YES
LAURA A GUNN	9/1/2010	7110 6605 9590 0012 4680	YES
LAURA DICHTER	9/1/2010	7110 6605 9590 0012 4697	YES
LAURENCE B KELLY LIVING TRUST	9/1/2010	7110 6605 9590 0012 4703	YES
LAVERNE MYATT	9/15/2010	7110 6605 9590 0013 3699	YES
LAWRENCE J GARCIA	9/1/2010	7110 6605 9590 0012 4710	YES
LEAH B DOWNEY EST	9/15/2010	7110 6605 9590 0013 3026	YES
LEE LOPEZ	9/15/2010	7110 6605 9590 0013 3736	Notification Returned
LELAND FIKES FOUNDATION	9/1/2010	7110 6605 9590 0012 4727	YES
LELAND STANFORD JUNIOR UNIVERSITY	9/1/2010	7110 6605 9590 0012 4734	YES
LEO J MOMSEN	9/1/2010	7110 6605 9590 0012 4741	YES
LEOLA S LUCHETTI	9/15/2010	7110 6605 9590 0013 3033	YES
LEOLA S. LUCHETTI	9/1/2010	7110 6605 9590 0012 4758	YES
LESA M FLOECK	9/1/2010	7110 6605 9590 0012 4765	YES
LESLIE OSHEA	9/1/2010	7110 6605 9590 0012 4772	YES
LEWIS T BARRINGER JR	9/1/2010	7110 6605 9590 0012 4789	YES
LILLY L NEWKIRK	9/1/2010	7110 6605 9590 0012 4796	YES
LINDA ANNE BELL	9/1/2010	7110 6605 9590 0012 4802	YES
LINDA CALVERT	9/1/2010	7110 6605 9590 0012 4819	YES
LINDA JANE WILLIAMS LIV TR DTD 8/26/2003	9/1/2010	7110 6605 9590 0012 4826	YES
LINDA JEANNE LUNDELL LINDSEY	9/1/2010	7110 6605 9590 0012 4833	Unclaimed
LINDA L WHITE	9/1/2010	7110 6605 9590 0012 4840	YES
LINDA LEE LAYLAND HADLEY	9/15/2010	7110 6605 9590 0013 3743	YES
LINDA M SMITH	9/1/2010	7110 6605 9590 0012 4857	YES
LINDA MARIE MCCARTNEY	9/1/2010	7110 6605 9590 0012 4864	YES
LINDA MARTINEZ	9/1/2010	7110 6605 9590 0012 4871	YES
LINDA STROBEL LIFE TENANT	9/1/2010	7110 6605 9590 0012 4888	YES
LINDALE RESOURCES LLC	9/1/2010	7110 6605 9590 0012 4895	YES

Mesaverde / Dakota Owners Notified / Green Card Receipts

R-10786, R-10694, R-10695, R-10696, R-10476-B, R-10770, R-11187, R-10697, R-10771, R-10692

Owner Name	Date Mailed	Certified Number	Certified Green Card Received
LINDSAY PRODUCTION & ROYALTIES LTD	9/1/2010	7110 6605 9590 0012 4901	YES
LISA BRIGHTBILL	9/1/2010	7110 6605 9590 0012 4918	Unclaimed
LORA ALVERSON BENTLEY	9/1/2010	7110 6605 9590 0012 4925	YES
LORIE GORDON	9/1/2010	7110 6605 9590 0012 4932	YES
LORNA R HARVEY	9/1/2010	7110 6605 9590 0012 4949	YES
LORRAYN GAY HACKER	9/1/2010	7110 6605 9590 0012 4956	YES
LORRINE G LUCERO	9/1/2010	7110 6605 9590 0012 4963	YES
LOU ANN PATTERSON	9/1/2010	7110 6605 9590 0012 4970	YES
LOUIS M CUMMINS	9/1/2010	7110 6605 9590 0012 4987	YES
LOWE ROYALTY PARTNERS LP	9/1/2010	7110 6605 9590 0012 4994	YES
LOWELL M PARRISH JR	9/1/2010	7110 6605 9590 0012 5007	YES
LUCIA ANN RAWSON BRANDT	9/1/2010	7110 6605 9590 0012 5014	YES
LUCILLE MILLER	9/1/2010	7110 6605 9590 0012 5021	YES
LUCINDA DAVENPORT	9/1/2010	7110 6605 9590 0012 5038	YES
LUCY W JAMES	9/1/2010	7110 6605 9590 0012 5045	YES
LUELLEN AGEE	9/1/2010	7110 6605 9590 0012 5052	YES
LUSELLA GONZALES	9/1/2010	7110 6605 9590 0012 5069	YES
LYNDA C BLANCETT IRREVOC MARITAL TRUST	9/1/2010	7110 6605 9590 0012 5076	YES
LYNDA WILSON	9/1/2010	7110 6605 9590 0012 5083	YES
LYNN E DESPER	9/1/2010	7110 6605 9590 0012 5090	YES
LYNN M SHAW	9/1/2010	7110 6605 9590 0012 5106	YES
M ROBERT THOMPSON	9/1/2010	7110 6605 9590 0012 5113	YES
M SEAN SMITH	9/1/2010	7110 6605 9590 0012 5120	YES
M THOMAS LAYLAND	9/15/2010	7110 6605 9590 0013 3750	YES
MABEL GLENN HAM REVOC TRUST	9/1/2010	7110 6605 9590 0012 5137	YES
MABEL OTSTOT & COMPANY	9/1/2010	7110 6605 9590 0012 5144	YES
MABELLE H SOWERS	9/1/2010	7110 6605 9590 0012 5151	YES
MACK H WOOLDRIDGE	9/1/2010	7110 6605 9590 0012 5168	YES
MACLONDON ENERGY LP	9/1/2010	7110 6605 9590 0012 5175	YES
MADALYN JOY JOHNSON	9/15/2010	7110 6605 9590 0013 3040	YES
MAE GERSBACH	9/15/2010	7110 6605 9590 0013 3057	
MAHONEY HOLDINGS LLC	9/15/2010	7110 6605 9590 0013 3064	YES
MALCOLM EDWARD SMITH JR	9/15/2010	7110 6605 9590 0013 3767	YES
MALONE FAMILY TRUST	9/1/2010	7110 6605 9590 0012 5182	YES
MANSFIELD FAMILY 2001 REV TR	9/1/2010	7110 6605 9590 0012 5199	YES
MANUEL A FERRAN	9/1/2010	7110 6605 9590 0012 5205	YES
MANUEL F MARTINEZ JR	9/15/2010	7110 6605 9590 0013 3774	
MANUEL S & BERNADETTE GOMEZ LIV TR DTD	9/1/2010	7110 6605 9590 0012 5212	YES
MAP 92 96 MGD	9/1/2010	7110 6605 9590 0012 5229	YES
MAP HOLDINGS	9/1/2010	7110 6605 9590 0012 5236	YES
MAP K&W OK	9/1/2010	7110 6605 9590 0012 5243	YES
MAP2001-NET	9/1/2010	7110 6605 9590 0012 5250	YES
MAP99A-NET	9/1/2010	7110 6605 9590 0012 5267	YES
MAR OIL & GAS CORPORATION	9/1/2010	7110 6605 9590 0012 5274	YES
MARALEX RESOURCES INC	9/1/2010	7110 6605 9590 0012 5281	YES
MARCIA BERGER ESTATE	9/1/2010	7110 6605 9590 0012 5298	YES
MARCIA L BERGER EDUCATIONAL FOUNDATION	9/15/2010	7110 6605 9590 0013 3071	YES
MARGARET A KEARNS TRUST	9/1/2010	7110 6605 9590 0012 5304	
MARGARET A MOMSEN	9/1/2010	7110 6605 9590 0012 5311	Notification Returned

Mesaverde / Dakota Owners Notified / Green Card Receipts

R-10786, R-10694, R-10695, R-10696, R-10476-B, R-10770, R-11187, R-10697, R-10771, R-10692

Owner Name	Date Mailed	Certified Number	Certified Green Card Received
MARGARET ALLINSON LAYCOCK	9/1/2010	7110 6605 9590 0012 5328	
MARGARET C BURGESS	9/1/2010	7110 6605 9590 0012 5335	YES
MARGARET C PARGIN	9/1/2010	7110 6605 9590 0012 5342	YES
MARGARET E HOUSER-SILVA	9/1/2010	7110 6605 9590 0012 5359	YES
MARGARET FREDERKING IRREV FAMILY TR	9/1/2010	7110 6605 9590 0012 5366	YES
MARGARET H. WYGOCKI	9/1/2010	7110 6605 9590 0012 5373	YES
MARGARET HUNT HILL AI G HILL TRUST	9/1/2010	7110 6605 9590 0012 5380	YES
MARGARET HUNT HILL CODY WIKERT TRUST	9/1/2010	7110 6605 9590 0012 5397	YES
MARGARET HUNT HILL ELISA HILL TRUST	9/1/2010	7110 6605 9590 0012 5403	YES
MARGARET HUNT HILL HEATHER HILL TRUST	9/1/2010	7110 6605 9590 0012 5410	YES
MARGARET HUNT HILL MARGRETTA WIKERT TR	9/1/2010	7110 6605 9590 0012 5427	YES
MARGARET HUNT HILL MICHAEL WISENBAKER JR	9/1/2010	7110 6605 9590 0012 5434	YES
MARGARET HUNT HILL, AL G HILL III TRST	9/1/2010	7110 6605 9590 0012 5441	YES
MARGARITA L ARCHULETA	9/1/2010	7110 6605 9590 0012 5458	YES
MARGARITA M. MAESTAS	9/1/2010	7110 6605 9590 0012 5465	YES
MARGUERITE M PLEMONS	9/15/2010	7110 6605 9590 0013 3781	YES
MARIA DELFINITA GOMEZ CHAVEZ	9/1/2010	7110 6605 9590 0012 5472	YES
MARIAN F EARP	9/15/2010	7110 6605 9590 0013 3088	YES
MARIAN F EARP 1990 IRREVOCABLE TRUST	9/1/2010	7110 6605 9590 0012 5489	YES
MARIAN ISERN REVOCABLE TRUST D	9/1/2010	7110 6605 9590 0012 5496	YES
MARIAN ISERN TR D	9/15/2010	7110 6605 9590 0013	
MARIAN ISERN TRUST C	9/1/2010	7110 6605 9590 0012 5502	YES
MARIAN N HARWELL	9/1/2010	7110 6605 9590 0012 5519	YES
MARIE A SCHAEFER	9/1/2010	7110 6605 9590 0012 5526	YES
MARIE ARNOLD	9/1/2010	7110 6605 9590 0012 5533	YES
MARIE C MORGAN	9/1/2010	7110 6605 9590 0012 5540	
MARIE R RABB TRUST	9/1/2010	7110 6605 9590 0012 5557	YES
MARILYN A MCGEE	9/1/2010	7110 6605 9590 0012 5564	YES
MARILYN BERG	9/1/2010	7110 6605 9590 0012 5571	YES
MARILYN DAVENPORT	9/1/2010	7110 6605 9590 0012 5588	YES
MARILYN F MENASCO REV TR DTD 10 25 1996	9/1/2010	7110 6605 9590 0012 5595	YES
MARILYN L HESS	9/1/2010	7110 6605 9590 0012 5601	YES
MARK A SCHAUER	9/15/2010	7110 6605 9590 0013 3811	YES
MARK HAYDEN MEADE	9/15/2010	7110 6605 9590 0013 3095	YES
MARK PATE	9/1/2010	7110 6605 9590 0012 5618	YES
MARK W ANDERSON	9/1/2010	7110 6605 9590 0012 5625	YES
MARK W BRENNAND	9/1/2010	7110 6605 9590 0012 5632	YES
MARK WOOD BRENNAND	9/15/2010	7110 6605 9590 0013 3828	YES
MARQUITA VAZQUEZ	9/1/2010	7110 6605 9590 0012 5649	YES
MARTHA A SIAU	9/1/2010	7110 6605 9590 0012 5656	YES
MARTHA DELL FREDERICK 2001 TR	9/15/2010	7110 6605 9590 0013 3835	YES
MARTHA DIXON	9/1/2010	7110 6605 9590 0012 5663	YES
MARTHA ELIZABETH DUGAN	9/1/2010	7110 6605 9590 0012 5670	
MARTHA J ATKINS	9/1/2010	7110 6605 9590 0012 5687	
MARTHA K WILLIAMSON	9/1/2010	7110 6605 9590 0012 5694	YES
MARTHA M TUCKER	9/1/2010	7110 6605 9590 0012 5700	YES
MARVIN LAYLAND	9/15/2010	7110 6605 9590 0013 3842	YES
MARY ANN ISERN DEEN	9/1/2010	7110 6605 9590 0012 5717	YES
MARY ANNE HOWARD	9/1/2010	7110 6605 9590 0012 5724	YES

Mesaverde / Dakota Owners Notified / Green Card Receipts
R-10786, R-10694, R-10695, R-10696, R-10476-B, R-10770, R-11187, R-10697, R-10771, R-10692

Owner Name	Date Mailed	Certified Number	Certified Green Card Received
MARY CAROLYN CUTLER CLIFFORD	9/1/2010	7110 6605 9590 0012 5731	
MARY DOLL INGRAM MANAGEMENT TRUST	9/1/2010	7110 6605 9590 0012 5748	YES
MARY E CAUBLE WALKER	9/1/2010	7110 6605 9590 0012 5755	
MARY E NEVITT	9/1/2010	7110 6605 9590 0012 5762	YES
MARY ELIZABETH HARDIE ROYALTY TRUST	9/1/2010	7110 6605 9590 0012 5779	YES
MARY F LOVE	9/1/2010	7110 6605 9590 0012 5786	YES
MARY FRANCES TURNER JR TR 6743	9/1/2010	7110 6605 9590 0012 5793	YES
MARY G TEESDALE TRUSTEE	9/1/2010	7110 6605 9590 0012 5809	YES
MARY GENE BLOOMQUIST	9/1/2010	7110 6605 9590 0012 5816	YES
MARY ISABEL HOFFMANN	9/1/2010	7110 6605 9590 0012 5823	YES
MARY J BANKS	7/2/2010	7110 6605 9590 0012 5830	YES
MARY J CHAPPELL TRUST B	7/2/2010	7110 6605 9590 0012 5847	YES
MARY J MILLER	7/2/2010	7110 6605 9590 0012 5854	YES
MARY JO WELLS	7/2/2010	7110 6605 9590 0012 5861	YES
MARY K CLEMENTS	7/2/2010	7110 6605 9590 0012 5878	YES
MARY KATHRYN DUNNAM LADEWIG	7/2/2010	7110 6605 9590 0012 5885	YES
MARY L ADKISSON	7/2/2010	7110 6605 9590 0012 5892	YES
MARY L HERROLD REVOC TR	7/2/2010	7110 6605 9590 0012 5908	YES
MARY LINDA LEY AMENT	7/2/2010	7110 6605 9590 0012 5915	YES
MARY LINDA LEY CUTLER CHILDRES TRST	7/2/2010	7110 6605 9590 0012 5922	YES
MARY LYNNE BRUNNER REV TR UA JULY '7 2000	7/2/2010	7110 6605 9590 0012 5939	YES
MARY MAUDE STEPHENSON TRUST	7/2/2010	7110 6605 9590 0012 5946	YES
MARY MENGEL TALSMA	7/2/2010	7110 6605 9590 0012 5953	YES
MARY PATRICIA O'HORNETT PETERSDORF	9/15/2010	7110 6605 9590 0013 3859	YES
MARY S ZICK	7/2/2010	7110 6605 9590 0012 5960	YES
MARY VIRGINIA THOMPSON	7/2/2010	7110 6605 9590 0012 5977	YES
MATIAS A ZAMORA	7/2/2010	7110 6605 9590 0012 5984	YES
MAURICIO E GOMEZ & MARY M GOMEZ REV TR	7/2/2010	7110 6605 9590 0012 5991	YES
MB ARMER TEST TR	9/15/2010	7110 6605 9590 0013 3866	YES
MCALLEN NATIONAL BANK, INDP EXC O/E/O	7/2/2010	7110 6605 9590 0012 6004	YES
MCELVAIN OIL COMPANY	7/2/2010	7110 6605 9590 0012 6011	YES
MCKAY OIL & GAS LLC	7/2/2010	7110 6605 9590 0012 6028	YES
MCLISH RESOURCES LLP	9/15/2010	7110 6605 9590 0013 3873	YES
MEADOWS FAMILY PARTNERSHIP	7/2/2010	7110 6605 9590 0012 6035	YES
MEDICINE BOW LAND COMPANY LLC	7/2/2010	7110 6605 9590 0012 6042	YES
MEGAN ELIZABETH CALLAN	7/2/2010	7110 6605 9590 0012 6059	YES
MELINDA MONTOYA	7/2/2010	7110 6605 9590 0012 6066	
MELODY GIGER TOOHEY	7/2/2010	7110 6605 9590 0012 6073	YES
MERCEDES M SKIDMORE	7/2/2010	7110 6605 9590 0012 6080	YES
MERLAND EUGENE BUTTOLPH	7/2/2010	7110 6605 9590 0012 6097	YES
MERLENE LAW MALONE FMLY TR DTD JAN 23 92	7/2/2010	7110 6605 9590 0012 6103	YES
MERRION INVESTMENT COMPANY	7/2/2010	7110 6605 9590 0012 6110	YES
MERRION OIL & GAS CORP	7/2/2010	7110 6605 9590 0012 6127	YES
MERRION TRUST PARTNERS LP	7/2/2010	7110 6605 9590 0012 6134	YES
MESA ROYALTY TR	7/2/2010	7110 6605 9590 0012 6141	YES
MHT PROPERTIES LTD	7/2/2010	7110 6605 9590 0012 6158	
MICHAEL A & GLORIA WILLIAMS LIV TR DTD	7/2/2010	7110 6605 9590 0012 6165	YES
MICHAEL ALLEN SMITH	7/2/2010	7110 6605 9590 0012 6172	YES
MICHAEL CHARLES MORGAN	7/2/2010	7110 6605 9590 0012 6189	YES

Mesaverde / Dakota Owners Notified / Green Card Receipts

R-10786, R-10694, R-10695, R-10696, R-10476-B, R-10770, R-11187, R-10697, R-10771, R-10692

Owner Name	Date Mailed	Certified Number	Certified Green Card Received
MICHAEL D BROWN	7/2/2010	7110 6605 9590 0012 6196	YES
MICHAEL FITZ GERALD ESTATE	7/2/2010	7110 6605 9590 0012 6202	YES
MICHAEL J FINNEY	7/2/2010	7110 6605 9590 0012 6219	YES
MICHAEL O VANDEWART	7/2/2010	7110 6605 9590 0012 6226	YES
MICHAEL ROBERT AHO	9/15/2010	7110 6605 9590 0013 3101	
MICHAEL S MCLANE TRUST DEC 1 1976	7/2/2010	7110 6605 9590 0012 6233	YES
MICHAEL SIMPSON TRUST	7/2/2010	7110 6605 9590 0012 6240	
MICHAEL VERNE PERRYMAN	7/2/2010	7110 6605 9590 0012 6257	YES
MICHAEL W HOUSTON	7/2/2010	7110 6605 9590 0012 6264	YES
MICHELLE D ALEXANDER	7/2/2010	7110 6605 9590 0012 6271	Unclaimed
MILDRED I BERTSCH	7/2/2010	7110 6605 9590 0012 6288	YES
MILLER EARLE HILL	9/15/2010	7110 6605 9590 0013 3880	YES
MILLER TRUST UWO HELEN MILLER	7/2/2010	7110 6605 9590 0012 6295	YES
MILO D SMITH	7/2/2010	7110 6605 9590 0012 6301	YES
MIMI ANN MORGAN QUINN	7/2/2010	7110 6605 9590 0012 6318	YES
MINA RUTH FITTING	7/2/2010	7110 6605 9590 0012 6325	YES
MINERALS MGT SERVICE	7/2/2010	7110 6605 9590 0012	
MIRIAM M CARROLL TRUST	7/2/2010	7110 6605 9590 0012 6349	YES
MIRIAM N WASHBURN TRUST	7/2/2010	7110 6605 9590 0012 6356	YES
MISTY E COLES	9/15/2010	7110 6605 9590 0013 3897	YES
MITZI H EASLEY	7/2/2010	7110 6605 9590 0012 6363	YES
MOLLY A JACQUES FAMILY LLC	7/2/2010	7110 6605 9590 0012 6370	YES
MOMSEN TRUST B	7/2/2010	7110 6605 9590 0012 6387	YES
MONICA SENA	7/2/2010	7110 6605 9590 0012 6394	YES
MONICA SORRELS	7/2/2010	7110 6605 9590 0012 6400	YES
MONSIGNOR LEO GOMEZ TR 4/10/03	9/15/2010	7110 6605 9590 0013 3118	
MONSIGNOR LEO GOMEZ TRUST DTD 4-10-03	7/2/2010	7110 6605 9590 0012 6417	YES
MOSES BICKFORD STEVENS	7/2/2010	7110 6605 9590 0012 6424	YES
MOULDS FAMILY TRUST	7/2/2010	7110 6605 9590 0012 6431	YES
MRS ABEL GARCIA	7/2/2010	7110 6605 9590 0012 6448	Unclaimed
MURIEL ANDREWS BOSSERT LIFE ESTATE	7/2/2010	7110 6605 9590 0012 6455	YES
NAN ALICE ELAM HAMBY	7/2/2010	7110 6605 9590 0012 6462	YES
NANCY A LEY WILSON	7/2/2010	7110 6605 9590 0012 6479	YES
NANCY C BARD LISA BARD FIELD	7/2/2010	7110 6605 9590 0012 6486	YES
NANCY H GERSON	7/2/2010	7110 6605 9590 0012 6493	YES
NANCY J SPENCER	7/2/2010	7110 6605 9590 0012 6509	YES
NANCY LEY WILSON CHILDRES TRUST	7/2/2010	7110 6605 9590 0012 6516	YES
NANCY O MABE TRUST DTD 9/21/1994	7/2/2010	7110 6605 9590 0012 6523	YES
NANCY T CONROW	7/2/2010	7110 6605 9590 0012 6530	YES
NATHAN D MYER	7/2/2010	7110 6605 9590 0012 6547	
NAVATEX ENERGY LP	7/2/2010	7110 6605 9590 0012 6554	YES
NEAL S WATERFALL	7/2/2010	7110 6605 9590 0012 6561	YES
NED NICKSON JR	7/2/2010	7110 6605 9590 0012 6578	YES
NEIL D SCHWED REV TR FBO KATHLEEN A DONEY	9/15/2010	7110 6605 9590 0013 3903	
NEIL D SCHWED REV TR FBO NEIL DAN SCHWED II	9/15/2010	7110 6605 9590 0013 3910	
NELLIE JOHNSON LIFE ESTATE	7/2/2010	7110 6605 9590 0012 6585	YES
NELLIE JUANITA RUTHERFORD	7/2/2010	7110 6605 9590 0012 6592	YES
NELSON MINERALS LLC	9/15/2010	7110 6605 9590 0013 3125	YES
NEVIL SHANE CISELL	9/15/2010	7110 6605 9590 0013 3927	YES

Mesaverde / Dakota Owners Notified / Green Card Receipts

R-10786, R-10694, R-10695, R-10696, R-10476-B, R-10770, R-11187, R-10697, R-10771, R-10692

Owner Name	Date Mailed	Certified Number	Certified Green Card Received
NFF LTD	7/2/2010	7110 6605 9590 0012 6608	YES
NICK CANDELARIA	7/2/2010	7110 6605 9590 0012 6615	YES
NICOLE HOFFMAN	7/2/2010	7110 6605 9590 0012 6622	YES
NIDA RAE LARSON	7/2/2010	7110 6605 9590 0012 6639	YES
NIGH REV TR AGREEMENT DTD 8 3 1989	7/2/2010	7110 6605 9590 0012 6646	
NINETY SIX CORPORATION	7/2/2010	7110 6605 9590 0012 6653	YES
NOBLE ONSHORE INC	7/2/2010	7110 6605 9590 0012 6660	YES
NORA HAMPTON SAMS RV 2000 TR DT MAR 3 00	7/2/2010	7110 6605 9590 0012 6677	YES
NORMA JEAN BRENNAND	7/2/2010	7110 6605 9590 0012 6684	YES
NORMAN L HAY JR GS TRUST	7/2/2010	7110 6605 9590 0012 6691	YES
NORTHERN TRUST BANK LAKE FOREST	7/2/2010	7110 6605 9590 0012 6707	YES
NORTHSTAR PRODUCTION & LAND LLC	7/2/2010	7110 6605 9590 0012 6714	YES
NUEVO SEIS LP	7/2/2010	7110 6605 9590 0012 6721	YES
ODYSSEY ROYALTIES LLC	7/2/2010	7110 6605 9590 0012 6738	
OIL & GAS DISTRIBUTION ACCT FASKEN	7/2/2010	7110 6605 9590 0012 6745	YES
OMIMEX PETROLEUM INC	7/2/2010	7110 6605 9590 0012 6752	YES
ONEIDA COBERLY	7/2/2010	7110 6605 9590 0012 6769	YES
ORALIA CASAS JARAMILLO	7/2/2010	7110 6605 9590 0012 6776	YES
OROCO LLC	7/2/2010	7110 6605 9590 0012 6783	YES
OTTERBELT LLL	7/2/2010	7110 6605 9590 0012 6790	YES
P ELENA SANCHEZ	7/2/2010	7110 6605 9590 0012 6806	YES
P. J. HANNIFIN FAMILY TRUST,	7/2/2010	7110 6605 9590 0012 6813	YES
PABLO LENNY CANDELARIA	7/2/2010	7110 6605 9590 0012 6820	YES
PAMELA GRAY BALDWIN	9/1/2010	7110 6605 9590 0012 6844	YES
PAMELA I CLUTE	9/1/2010	7110 6605 9590 0012 6851	YES
PAMELA JULIET DENNIS	9/1/2010	7110 6605 9590 0012 6868	YES
PAMELA POLLOCK BRUNS	7/2/2010	7110 6605 9590 0012 6837	YES
PAT D & CRUZELIA MONTOYA LIVING TRUST	9/1/2010	7110 6605 9590 0012 6875	YES
PAT S BOLIN	9/1/2010	7110 6605 9590 0012 6882	YES
PATRICIA ANN ASHBURN	9/1/2010	7110 6605 9590 0012 6899	YES
PATRICIA B MASI	9/1/2010	7110 6605 9590 0012 6905	YES
PATRICIA ELLEN ELLSWORTH	9/1/2010	7110 6605 9590 0012 6912	YES
PATRICIA G HARVEY	9/1/2010	7110 6605 9590 0012 6929	YES
PATRICIA LAURIE FRANCIL	9/1/2010	7110 6605 9590 0012 6936	YES
PATRICIA N RIGG	9/1/2010	7110 6605 9590 0012 6943	YES
PATRICIA SIMPSON TRUST	9/1/2010	7110 6605 9590 0012 6950	
PATRICIA STEELE	9/1/2010	7110 6605 9590 0012 6967	Unclaimed
PATRICIA VELARDE	9/1/2010	7110 6605 9590 0012 6974	YES
PATRICK A MACINTOSH	9/1/2010	7110 6605 9590 0012 6981	YES
PATRICK J HERBERT III SUCC TTEE UAD	9/1/2010	7110 6605 9590 0012 6998	YES
PATSY L WILLIAMSON	9/15/2010	7110 6605 9590 0013 3934	YES
PATSY R CUMMINS	9/1/2010	7110 6605 9590 0012 7001	YES
PATTERSON GROUP	9/1/2010	7110 6605 9590 0012 7018	YES
PATTI PECK WOOD	9/1/2010	7110 6605 9590 0012 7025	YES
PAUL A BRENNAND	9/1/2010	7110 6605 9590 0012 7032	YES
PAUL A TREXEL	9/1/2010	7110 6605 9590 0012 7049	YES
PAUL DAVIS LTD	9/1/2010	7110 6605 9590 0012 7056	YES
PAUL PATE	9/1/2010	7110 6605 9590 0012 7063	YES
PAUL R. MAYO, JR.	9/1/2010	7110 6605 9590 0012 7070	YES

Mesaverde / Dakota Owners Notified / Green Card Receipts

R-10786, R-10694, R-10695, R-10696, R-10476-B, R-10770, R-11187, R-10697, R-10771, R-10692

Owner Name	Date Mailed	Certified Number	Certified Green Card Received
PAUL SLAYTON	9/1/2010	7110 6605 9590 0012 7087	YES
PAULETTE SHARON CANDELARIA	9/1/2010	7110 6605 9590 0012 7094	YES
PAULINE GARCIA	9/1/2010	7110 6605 9590 0012 7100	
PAULINE P. JOHNSON	9/1/2010	7110 6605 9590 0012 7117	Notification Returned
PEARL R TAYLOR EST	9/15/2010	7110 6605 9590 0013 3941	YES
PENELOPE HESS BUTLER	9/1/2010	7110 6605 9590 0012 7124	YES
PENNIES FROM HEAVEN LLC	9/1/2010	7110 6605 9590 0012 7131	YES
PENROC OIL CORPORATION	9/1/2010	7110 6605 9590 0012 7148	
PERRY H. POLLOCK	9/1/2010	7110 6605 9590 0012 7155	YES
PETCO LIMITED	9/1/2010	7110 6605 9590 0012 7162	YES
PETER CLAUD JACOBSEN	9/1/2010	7110 6605 9590 0012 7179	YES
PETER MCKEE BRENNAND	9/1/2010	7110 6605 9590 0012 7186	YES
PETERSON FAMILY TRUST	9/1/2010	7110 6605 9590 0012 7193	YES
PETROGULF CORPORATION	9/1/2010	7110 6605 9590 0012 7209	YES
PGC GAS COMPANY	9/1/2010	7110 6605 9590 0012 7216	YES
PHILIP G DEMEREE	9/1/2010	7110 6605 9590 0012 7223	YES
PHILIP L HOMBURGER & DEBRA L	9/1/2010	7110 6605 9590 0012 7230	YES
PHILLIP F MARBERRY	9/15/2010	7110 6605 9590 0013 3132	YES
PHYLLIS F HOFFMAN	9/1/2010	7110 6605 9590 0012 7247	YES
PINE CONE PROPERTIES LLC	9/1/2010	7110 6605 9590 0012 7254	YES
PINON RESOURCES INC	9/1/2010	7110 6605 9590 0012 7261	YES
PINTAIL PRODUCTION CO INC	9/1/2010	7110 6605 9590 0012 7278	YES
PIONEER NATURAL RESOURCES USA INC	9/1/2010	7110 6605 9590 0012 7285	YES
PITCH ENERGY CORP	9/1/2010	7110 6605 9590 0012 7292	YES
POTENZIANI FAMILY PTSP	9/1/2010	7110 6605 9590 0012 7308	YES
PRESTON HOLLOW UNITED	9/1/2010	7110 6605 9590 0012 7315	YES
PRIMITIVE PETROLEUM INC	9/1/2010	7110 6605 9590 0012 7322	YES
PRINCETON UNIVERSITY GRADUATE COLLEGE	9/1/2010	7110 6605 9590 0012 7339	YES
PRISCILLA HESS WATSON	9/1/2010	7110 6605 9590 0012 7346	YES
PRITCHETT LIVING TRUST DTD 5 3 2001	9/1/2010	7110 6605 9590 0012 7353	YES
PRODUCTION GATHERING COMPANY LP	9/1/2010	7110 6605 9590 0012 7360	YES
PROVIDENCE MINERALS LLC	9/1/2010	7110 6605 9590 0012 7377	YES
PURE RESOURCES LP	9/1/2010	7110 6605 9590 0012 7384	YES
R D STUART TRUST	9/1/2010	7110 6605 9590 0012 7391	YES
R E BEAMON III	9/1/2010	7110 6605 9590 0012 7407	YES
R H FEUILLE	9/1/2010	7110 6605 9590 0012 7414	YES
R L BOLIN PROPERTIES LTD	9/1/2010	7110 6605 9590 0012 7421	YES
R. A. JENNINGS, AGENT	9/1/2010	7110 6605 9590 0012 7438	YES
R. R. HINKLE COMPANY, INC.	9/1/2010	7110 6605 9590 0012 7445	YES
RABSM LLC	9/15/2010	7110 6605 9590 0013 3958	YES
RALPH ALLEN VANDEWART III	9/1/2010	7110 6605 9590 0012 7452	YES
RALPH W GILMORE	9/1/2010	7110 6605 9590 0012 7469	YES
RANDOLPH BRIGGS	9/1/2010	7110 6605 9590 0012 7476	YES
RANDY SMYSER	9/1/2010	7110 6605 9590 0012 7483	YES
RAY HAMMOND REVOCABLE TRUST	9/1/2010	7110 6605 9590 0012 7490	YES
RAYMOND C HARRIS	9/1/2010	7110 6605 9590 0012 7506	YES
RAYMOND K PALMER	9/1/2010	7110 6605 9590 0012 7513	YES
RAYMOND L GALLEGOS	9/1/2010	7110 6605 9590 0012 7520	YES
RAYMOND SMYSER	9/1/2010	7110 6605 9590 0012 7537	YES

Mesaverde / Dakota Owners Notified / Green Card Receipts

R-10786, R-10694, R-10695, R-10696, R-10476-B, R-10770, R-11187, R-10697, R-10771, R-10692

Owner Name	Date Mailed	Certified Number	Certified Green Card Received
REBECCA MCCLAIN	9/1/2010	7110 6605 9590 0012 7544	YES
REECE B ANDERSON	9/1/2010	7110 6605 9590 0012 7551	YES
REESE ELLEN TAYLOR	9/1/2010	7110 6605 9590 0012 7568	YES
REGENT OIL & GAS CO LP	9/15/2010	7110 6605 9590 0013 3965	YES
RESOURCE DEVELOPMENT TECHNOLOGY LLC	9/1/2010	7110 6605 9590 0012 7575	YES
RHB ENTERPRISES LLC	9/15/2010	7110 6605 9590 0013 3972	YES
RHEA DAWN WILBORN	9/1/2010	7110 6605 9590 0012 7582	YES
RICHARD A GROENENDYKE JR	9/1/2010	7110 6605 9590 0012 7599	Unclaimed
RICHARD A JENNINGS TRUSTEE	9/1/2010	7110 6605 9590 0012 7605	YES
RICHARD A MACINTOSH	9/1/2010	7110 6605 9590 0012 7612	YES
RICHARD ARNOLD	9/1/2010	7110 6605 9590 0012 7629	YES
RICHARD D FREDERKING FAMILY TRUST	9/1/2010	7110 6605 9590 0012 7636	YES
RICHARD GODFREY	9/1/2010	7110 6605 9590 0012 7643	
RICHARD H GODFREY JR	9/1/2010	7110 6605 9590 0012 7650	
RICHARD H HUGHES	9/1/2010	7110 6605 9590 0012 7667	YES
RICHARD H LANDSHEFT JR	9/1/2010	7110 6605 9590 0012 7674	
RICHARD PARKER LANGFORD	9/1/2010	7110 6605 9590 0012 7681	YES
RICHARD S NORDHAUS	9/1/2010	7110 6605 9590 0012 7698	YES
RICHARD TULLY D/B/A	9/1/2010	7110 6605 9590 0012 7704	YES
RICHARD W TURNER III REVOCABLE TRUST	9/1/2010	7110 6605 9590 0012 7711	YES
RICK SMYSER	9/1/2010	7110 6605 9590 0012 7728	YES
RIO ARIBAGAS LTD	9/1/2010	7110 6605 9590 0012 7735	YES
RIPLEY LIVING TR	9/1/2010	7110 6605 9590 0012 7742	YES
RITA M ADKINS	9/1/2010	7110 6605 9590 0012 7759	YES
RITA ROACH	9/1/2010	7110 6605 9590 0012 7766	YES
RKC INC	9/1/2010	7110 6605 9590 0012 7773	YES
ROB SMYSER	9/1/2010	7110 6605 9590 0012 7780	YES
ROBERT & THELMA SMITH REV TRUST	9/1/2010	7110 6605 9590 0012 7797	YES
ROBERT B FARNHAM FAMILY TRUST	9/1/2010	7110 6605 9590 0012 7803	YES
ROBERT C GRIFFITH	9/1/2010	7110 6605 9590 0012 7810	YES
ROBERT D FITTING TRUST	9/1/2010	7110 6605 9590 0012 7827	YES
ROBERT DICKEY	9/1/2010	7110 6605 9590 0012 7834	YES
ROBERT DOUGLAS STUART TRUST	9/2/2010	7110 6605 9590 0012 7841	YES
ROBERT E BEAMON	9/2/2010	7110 6605 9590 0012 8947	YES
ROBERT H BENART JR	9/15/2010	7110 6605 9590 0013 3996	YES
ROBERT L BAYLESS	9/2/2010	7110 6605 9590 0012 8954	YES
ROBERT L SPENCER	9/2/2010	7110 6605 9590 0012 8961	YES
ROBERT NICK RAWSON	9/2/2010	7110 6605 9590 0012 8978	
ROBERT NORMAN DUMBLE JR ESTATE	9/2/2010	7110 6605 9590 0012 8985	YES
ROBERT P EARNEST & ANNA DOKUS EARNEST TR	9/2/2010	7110 6605 9590 0012 8992	YES
ROBERT P. SOENS	9/2/2010	7110 6605 9590 0012 9005	YES
ROBERT PAYNE LANCASTER	9/2/2010	7110 6605 9590 0012 9012	
ROBERT SEAN RILEY	9/2/2010	7110 6605 9590 0012 9029	Unclaimed
ROBERT T EGGLESTON	9/2/2010	7110 6605 9590 0012 9036	
ROBERT T ISHAM TRUST	9/2/2010	7110 6605 9590 0012 9043	YES
ROBERT T STOLWORTHY JR	9/2/2010	7110 6605 9590 0012 9050	Unclaimed
ROBERT UMBACH CANCER FOUNDATION	9/2/2010	7110 6605 9590 0012 9067	YES
ROBERT W SMITH & THELMA M SMITH REV TR	9/2/2010	7110 6605 9590 0012 9074	YES
ROBERT W WESTFALL	9/15/2010	7110 6605 9590 0013 3705	YES

Mesaverde / Dakota Owners Notified / Green Card Receipts

R-10786, R-10694, R-10695, R-10696, R-10476-B, R-10770, R-11187, R-10697, R-10771, R-10692

Owner Name	Date Mailed	Certified Number	Certified Green Card Received
ROBERT WALTER LUNDELL	9/2/2010	7110 6605 9590 0012 9081	YES
ROBERTA W BROWN	9/2/2010	7110 6605 9590 0012 9098	YES
ROBIN AND ROD TURNER, LLC	9/2/2010	7110 6605 9590 0012 9104	YES
RODERICK A IRONSIDE	9/2/2010	7110 6605 9590 0012 9111	YES
ROGER B NIELSEN	9/2/2010	7110 6605 9590 0012 9128	
ROGER D SHAW JR TRUST	9/2/2010	7110 6605 9590 0012 9135	YES
ROGER J LOWE	9/2/2010	7110 6605 9590 0012 9142	
ROGERS FAM TR	9/15/2010	7110 6605 9590 0013 3156	
ROGERS FAMILY LIMITED PARTNERSHIP	9/2/2010	7110 6605 9590 0012 9159	YES
ROGERS FAMILY TRUST	9/2/2010	7110 6605 9590 0012 9166	YES
ROGERS GIBBARD TRUST	9/2/2010	7110 6605 9590 0012 9173	YES
ROMAN CATHOLIC CHURCH DIOCESE OF GALLUP	9/2/2010	7110 6605 9590 0012 9180	YES
ROMERO FAMILY LIMITED PARTNERSHIP	9/2/2010	7110 6605 9590 0012 9197	YES
RONALD E NORDHAUS	9/2/2010	7110 6605 9590 0012 9203	
RONALD K GRIFFITH	9/2/2010	7110 6605 9590 0012 9210	YES
RONALD LEE JACKS	9/2/2010	7110 6605 9590 0012 9227	YES
ROSALIE ARNOLD	9/2/2010	7110 6605 9590 0012 9234	YES
ROSALIE MARTINEZ	9/15/2010	7110 6605 9590 0013 4009	YES
ROSEMARY WARNER HALL	9/2/2010	7110 6605 9590 0012 9241	YES
ROWENA DALE LAABS	9/2/2010	7110 6605 9590 0012 9258	YES
RUBY JAQUEZ COAL SEAM PROPERTIES LLC	9/2/2010	7110 6605 9590 0012 9265	YES
RUEBEN F MOMSEN ESTATE	9/2/2010	7110 6605 9590 0012 9272	YES
RUFIE LUJAN	9/2/2010	7110 6605 9590 0012 9289	YES
RUGELEY TRUST	9/2/2010	7110 6605 9590 0012 9296	YES
RUSSELL E STEELE	9/2/2010	7009 2820 0001 5954 6053	YES
RUTH B REID	9/2/2010	7110 6605 9590 0012 9319	YES
RUTH FITTING WESTER FAM LTD	9/2/2010	7110 6605 9590 0012 9326	YES
RUTH ZIMMERMAN TRUST	9/2/2010	7110 6605 9590 0012 9333	YES
RUTHE LYNN VANDEWART	9/2/2010	7110 6605 9590 0012 9340	YES
SABINE ROYALTY TRUST	9/2/2010	7110 6605 9590 0012 9357	YES
SABLE ENERGY, LTD.	9/2/2010	7110 6605 9590 0012 9364	YES
SAL LEE OZ ANDERSON	9/2/2010	7110 6605 9590 0012 9371	YES
SALLY ANN MAHAFFEY	9/2/2010	7110 6605 9590 0012 9388	YES
SALLY COVINGTON	9/2/2010	7110 6605 9590 0012 9395	YES
SAM G WALL III	9/2/2010	7110 6605 9590 0012 9401	YES
SAMI RAE CISSELL	9/15/2010	7110 6605 9590 0013 4016	YES
SAMUEL D HAAS	9/2/2010	7110 6605 9590 0012 9418	YES
SAMUEL HAUSER	9/2/2010	7110 6605 9590 0012 9425	YES
SAMUEL LIONEL DAZZO JR SOLE & SEPARATE	9/2/2010	7110 6605 9590 0012 9432	YES
SAN JUAN BASIN POOL LTD	9/2/2010	7110 6605 9590 0012 9449	YES
SAN JUAN ROYALTY PARTNERS LLC	9/2/2010	7110 6605 9590 0012 9456	YES
SANDRA C SANCHEZ	9/2/2010	7110 6605 9590 0012 9463	YES
SANDRA L GONZALES	9/2/2010	7110 6605 9590 0012 9470	YES
SANDRA SIMPSON ET AL RESIDUARY TRST	9/2/2010	7110 6605 9590 0012 9487	
SANDRA T CURRIE	9/2/2010	7110 6605 9590 0012 9494	YES
SANRIO GAS LLC	9/2/2010	7110 6605 9590 0012 9500	YES
SARAH S MIMS TRUST WILLIAM L MADSEN	9/2/2010	7110 6605 9590 0012 9517	YES
SARATOGA ROYALTY LP	9/2/2010	7110 6605 9590 0012 9524	YES
SCHRAM 2006 FAMILY TRUST	9/2/2010	7110 6605 9590 0012 9531	YES

Mesaverde / Dakota Owners Notified / Green Card Receipts

R-10786, R-10694, R-10695, R-10696, R-10476-B, R-10770, R-11187, R-10697, R-10771, R-10692

Owner Name	Date Mailed	Certified Number	Certified Green Card Received
SCOT A ANDERSON	9/2/2010	7110 6605 9590 0012 9548	YES
SCOTT ALAN PERRYMAN	9/2/2010	7110 6605 9590 0012 9555	YES
SCOTT ANTHONY VENEZIA	9/2/2010	7110 6605 9590 0012 9562	YES
SCOTT BRIGHTBILL	9/2/2010	7110 6605 9590 0012 9579	
SCOTT SMITH	9/2/2010	7110 6605 9590 0012 9586	YES
SDF LLC	9/2/2010	7110 6605 9590 0012 9593	YES
SEALY & COMPANY LP	9/2/2010	7110 6605 9590 0012 9609	YES
SHARBRO OIL LTD CO	9/2/2010	7110 6605 9590 0012 9616	YES
SHARON BEAMON BURNS	9/2/2010	7110 6605 9590 0012 9623	YES
SHAWN P HANNIFIN	9/2/2010	7110 6605 9590 0012 9630	YES
SHEILA S CASSATT RESIDUARY TRUST	9/2/2010	7110 6605 9590 0012 9647	
SHEILA WARD	9/2/2010	7110 6605 9590 0012 9654	YES
SHELLEY LYNN WILSON MELODY	9/2/2010	7110 6605 9590 0012 9661	YES
SHEROD L MENGEL JR	9/2/2010	7110 6605 9590 0012 9678	YES
SHERRI HULT HEINTSCHEL	9/2/2010	7110 6605 9590 0012 9685	YES
SHERRILL A BOARDMAN	9/2/2010	7110 6605 9590 0012 9692	
SHIRLEY ANN CHOUTEAU TR JUNE 10 1992	9/2/2010	7110 6605 9590 0012 9708	YES
SHIRLEY J MIHECOBY	9/2/2010	7110 6605 9590 0012 9715	YES
SHIRLEY M GAULDIN	9/2/2010	7110 6605 9590 0012 9722	YES
SILVERADO OIL & GAS LLP	9/2/2010	7110 6605 9590 0012 9739	YES
SPEEREX LIMITED PARTNERSHIP	9/2/2010	7110 6605 9590 0012 9746	YES
SPINDLETOP EXPLORATION COMPANY INC	9/2/2010	7110 6605 9590 0012 9753	YES
STANLEY R ARNOLD	9/2/2010	7110 6605 9590 0012 9760	YES
STELLA L MALONE	9/2/2010	7110 6605 9590 0012 9777	YES
STELLA MADGE GREEAR	9/2/2010	7110 6605 9590 0012 9784	YES
STEPHANIE ANN CANDELARIA MARTINEZ	9/2/2010	7110 6605 9590 0012 9791	Unclaimed
STEPHEN BRIGHTBILL	9/2/2010	7110 6605 9590 0012 9807	YES
STEVE JACOB HOUSTON	9/2/2010	7110 6605 9590 0012 9814	YES
STEVEN H BARD	9/2/2010	7110 6605 9590 0012 9821	YES
STEVEN PRICE FASKEN REVOCABLE TRUST	9/2/2010	7110 6605 9590 0012 9838	YES
STOREY-LINCOLN PRTRNSHP	9/2/2010	7110 6605 9590 0012 9845	YES
STUART ROBERT DOUGLAS TRUST	9/2/2010	7110 6605 9590 0012 9852	YES
STUBBEMAN FAMILY FOUNDATION	9/2/2010	7110 6605 9590 0012 9869	YES
SUE BOYD	9/2/2010	7110 6605 9590 0012 9876	YES
SUE HANSON MCBRIDE	9/2/2010	7110 6605 9590 0012 9883	YES
SUE K VANDEWART ROMERO	9/2/2010	7110 6605 9590 0012 9890	YES
SUE WARD HALL ESTATE	9/2/2010	7110 6605 9590 0012 9906	notification returned- New Address-Remailed 10-4-10.
SUSAN AHO LANG	9/15/2010	7110 6605 9590 0013 3163	YES
SUSAN BEAMON PORTER	9/2/2010	7110 6605 9590 0012 9913	
SUSAN FASKEN HARTIN TRUST #1	9/2/2010	7110 6605 9590 0012 9920	YES
SUSAN FRY BRACKEN	9/2/2010	7110 6605 9590 0012 9937	YES
SUSAN H RITTER	9/1/2010	7110 6605 9590 0013 0940	YES
SUSAN HESS BAUMANN	9/1/2010	7110 6605 9590 0013 0957	YES
SUSAN LEE BOND GREEN	9/1/2010	7110 6605 9590 0013 0964	YES
SUSAN LEIGH PIERCE NELSON	9/1/2010	7110 6605 9590 0013 0971	YES
SUSAN MARIE CUCKLER	9/1/2010	7110 6605 9590 0013 0988	YES
SUSAN R HESS BAUMANN	9/1/2010	7110 6605 9590 0013 0995	YES
SUSANNA P KELLY JR	9/1/2010	7110 6605 9590 0013 1008	YES

Mesaverde / Dakota Owners Notified / Green Card Receipts

R-10786, R-10694, R-10695, R-10696, R-10476-B, R-10770, R-11187, R-10697, R-10771, R-10692

Owner Name	Date Mailed	Certified Number	Certified Green Card Received
SUSANNA PHILLIPS KELLY	9/1/2010	7110 6605 9590 0010 7201	YES
SUSANNE SHAW TR UAD SEPTEMBER 11 1953	9/1/2010	7110 6605 9590 0013 1022	YES
SUVIAN RUTH DAVES	9/1/2010	7110 6605 9590 0013 1039	YES
SUZANNE PRESTON CAMFERDAM	9/1/2010	7110 6605 9590 0013 1046	YES
SYLVIA LITTLE	9/1/2010	7110 6605 9590 0013 1053	YES
SYNERGY OPERATING LLC	9/1/2010	7110 6605 9590 0013 1060	YES
T D CUNNINGHAM	9/1/2010	7110 6605 9590 0013 1077	YES
T H MCELVAIN OIL AND GAS PROP	9/1/2010	7110 6605 9590 0013 1084	YES
TAMACAM LLC	9/1/2010	7110 6605 9590 0013 1091	YES
TANE R POTTER	9/15/2010	7110 6605 9590 0013 4023	YES
TED E DUFF TRUST	9/1/2010	7110 6605 9590 0013 1107	YES
TEMPE LIMITED PARTNERSHIP	9/1/2010	7110 6605 9590 0013 1114	YES
TERA ELIZABETH SALTER	9/1/2010	7110 6605 9590 0013 1121	YES
TERESA SLOCUM	9/15/2010	7110 6605 9590 0013 4030	YES
TEX ZIA PROPERTIES LTD	9/1/2010	7110 6605 9590 0013 1138	YES
TEXAS ROYALTIES	9/1/2010	7110 6605 9590 0013 1145	YES
THE DOROTHY T RUTTER TRUST	9/1/2010	7110 6605 9590 0013 1152	YES
THE FASKEN FAMILY LIMITED PARTNERSHIP	9/1/2010	7110 6605 9590 0013 1169	YES
THE NORDAN TRUST	9/1/2010	7110 6605 9590 0013 1176	YES
THE ROBERT A SMITH & PATRICIA L SMITH	9/1/2010	7110 6605 9590 0013 1183	YES
THE VIOLA I STEWART TRUST	9/1/2010	7110 6605 9590 0013 1190	YES
THE WRIGHT BROS TRUST	9/1/2010	7110 6605 9590 0013 1206	YES
THELMA DEMOTT	9/1/2010	7110 6605 9590 0013 1213	YES
THELMA GRAHAM FAMILY LIMITED PARTNERSHIP	9/1/2010	7110 6605 9590 0013 1220	YES
THEODORE J BLECHAR TRUST	9/1/2010	7110 6605 9590 0013 1237	YES
THOMAS AHO TR	9/15/2010	7110 6605 9590 0013 3170	YES
THOMAS B. CATRON, III AND JUNE	9/1/2010	7110 6605 9590 0013 1244	YES
THOMAS D CITRANGOLA &	9/1/2010	7110 6605 9590 0013 1251	Notification Returned
THOMAS E DUNNAM III	9/1/2010	7110 6605 9590 0013 1268	YES
THOMAS F MCKENNA SR CREDIT SHELTER TR	9/1/2010	7110 6605 9590 0013 1275	YES
THOMAS KEVIN PRESTON	9/1/2010	7110 6605 9590 0013 1282	YES
THOMAS P TINNIN	9/1/2010	7110 6605 9590 0013 1299	
THOMAS POLLOCK	9/1/2010	7110 6605 9590 0013 1305	YES
THOMAS R DUFFIN	9/1/2010	7110 6605 9590 0013 1312	Unclaimed
THOMAS W ISHAM	9/1/2010	7110 6605 9590 0013 1329	YES
THOMAS W MANDRY	9/1/2010	7110 6605 9590 0013 1336	YES
THOMPSON FAMILY LLC	9/1/2010	7110 6605 9590 0013 1343	YES
TIERRA POBRE LLC	9/1/2010	7110 6605 9590 0013 1350	YES
TIM B. ALLISON	9/1/2010	7110 6605 9590 0013 1367	YES
TIMOTHY COBURN	9/1/2010	7110 6605 9590 0013 1374	
TIMOTHY WINSTON WARD	9/1/2010	7110 6605 9590 0013 1381	YES
TINA GILES	9/1/2010	7110 6605 9590 0013 1398	YES
TINA GOMEZ	9/15/2010	7110 6605 9590 0013 3712	YES
TINA HERBERT	9/15/2010	7110 6605 9590 0013 3187	
TINMIL A NM LLC	9/1/2010	7110 6605 9590 0013 1404	
TOM D PATTERSON TRUSTEE OF THE	9/1/2010	7110 6605 9590 0013 1411	YES
TOM K MARTELLA	9/1/2010	7110 6605 9590 0013 1428	YES
TOMMY BOLACK	9/1/2010	7110 6605 9590 0013 1435	YES
TONI THOMAS	9/1/2010	7110 6605 9590 0013 1442	YES

Mesaverde / Dakota Owners Notified / Green Card Receipts
R-10786, R-10694, R-10695, R-10696, R-10476-B, R-10770, R-11187, R-10697, R-10771, R-10692

Owner Name	Date Mailed	Certified Number	Certified Green Card Received
TRIGG OIL & GAS LIMITED PARTNERSHIP	9/1/2010	7110 6605 9590 0013 1459	YES
TRIGG OIL LLC	9/1/2010	7110 6605 9590 0013 1466	
TRISTAR GAS MARKETING COMPANY	9/1/2010	7110 6605 9590 0013 1473	
TROUT LIMITED PARTNERSHIP	9/1/2010	7110 6605 9590 0013 1480	YES
TRUST UW SUE C BERGERE	9/1/2010	7110 6605 9590 0013 1497	YES
TRUST UWO VIRGINIE ISHAM FBO HENRY P	9/1/2010	7110 6605 9590 0013 1503	YES
TTB PROPERTIES LP	9/1/2010	7110 6605 9590 0013 1510	YES
TUW MARY E BROWN WILL	9/1/2010	7110 6605 9590 0013 1527	YES
UNIVERSITY OF NEW MEXICO FOUNDATION INC	9/1/2010	7110 6605 9590 0013 1534	YES
UPLANDS RESOURCES INC	9/15/2010	7110 6605 9590 0013 4047	YES
V A JOHNSTON LTD	9/1/2010	7110 6605 9590 0013 1541	YES
V V LOBATO TRUST	9/1/2010	7110 6605 9590 0013 1558	YES
VALERIE HUNDLEY	9/1/2010	7110 6605 9590 0013 1565	YES
VAUGHAN-MCELVAIN ENERGY INC	9/1/2010	7110 6605 9590 0013 1572	YES
VERDIA L MCGUIRE	9/1/2010	7110 6605 9590 0013 1589	YES
VEVA GENE GIBBARD	9/1/2010	7110 6605 9590 0013 1596	YES
VICKIE CHRISTENSEN	9/15/2010	7110 6605 9590 0013 4054	Unclaimed
VIRGINIA F ZOBECK TRUST DTD 9 1 2008	9/1/2010	7110 6605 9590 0013 1602	YES
VIRGINIA GRIFFIN NEW	9/1/2010	7110 6605 9590 0013 1619	YES
VIRGINIA HUGGINS	9/1/2010	7110 6605 9590 0013 1626	YES
VIRGINIA K EGGLESTON TRUST	9/1/2010	7110 6605 9590 0013 1633	YES
VIRGINIA M MARTINEZ	9/1/2010	7110 6605 9590 0013 1640	YES
VIRGINIA M. GORET	9/1/2010	7110 6605 9590 0013 1657	YES
VIRGINIA MOMSEN GRADY	9/1/2010	7110 6605 9590 0013 1664	
VIRGINIA O HATFIELD NM 2005 LIVING TRUST	9/1/2010	7110 6605 9590 0013 1671	YES
VIRGINIA THOMPSON CREPS TRUST	9/1/2010	7110 6605 9590 0013 1688	YES
W D KENNEDY PROPERTIES LTD	9/1/2010	7110 6605 9590 0013 1695	YES
W G PEAVY OIL COMPANY	9/1/2010	7110 6605 9590 0013 1701	YES
W L JENNINGS	9/1/2010	7110 6605 9590 0013 1718	YES
W. A. KERNAGHAN	9/1/2010	7110 6605 9590 0013 1725	YES
W.W. LAFORCE, JR.	9/1/2010	7110 6605 9590 0013 1732	YES
WALTER K HOWARD ESTATE	9/1/2010	7110 6605 9590 0013 1749	YES
WALTER R & FLORENCE L GIBSON TRUST	9/1/2010	7110 6605 9590 0013 1756	YES
WANDA H APODACA TR DTD 07/10/07	9/15/2010	7110 6605 9590 0013 3194	YES
WASATCH ENERGY LLC	9/1/2010	7110 6605 9590 0013 1763	Notification Returned
WATERS S DAVIS III	9/1/2010	7110 6605 9590 0013 1770	YES
WAYNE & JO ANNE MOORE CHARITABLE FDN	9/1/2010	7110 6605 9590 0013 1787	YES
WCB INVESTMENTS LLC NM LLC	9/15/2010	7110 6605 9590 0013 4061	YES
WENDY DALE JOHNSON	9/1/2010	7110 6605 9590 0013 1794	YES
WESLEY E LECK	9/15/2010	7110 6605 9590 0013 4078	
WESLEY T HOUSE TESTAMENTARY TRUST:FBO	9/1/2010	7110 6605 9590 0013 1800	YES
WESLEY WEST MINERALS LTD	9/1/2010	7110 6605 9590 0013 1817	YES
WESTMEATH CORP	9/1/2010	7110 6605 9590 0013 1824	YES
WHITE CREDIT TRUST AUG 24 2006	9/1/2010	7110 6605 9590 0013 1831	YES
WHITE RIVER ROYALTIES LLC	9/1/2010	7110 6605 9590 0013 1848	YES
WHITE STAR ENERGY INC	9/1/2010	7110 6605 9590 0013 1855	YES
WHITNEY CLAIRE RILEY	9/1/2010	7110 6605 9590 0013 1862	
WILCO PROPERTIES INC	9/1/2010	7110 6605 9590 0013 1879	YES
WILFRED REEVES JOHNSON	9/15/2010	7110 6605 9590 0013 3729	

Mesaverde / Dakota Owners Notified / Green Card Receipts

R-10786, R-10694, R-10695, R-10696, R-10476-B, R-10770, R-11187, R-10697, R-10771, R-10692

Owner Name	Date Mailed	Certified Number	Certified Green Card Received
WILLADEAN HIRSCH	9/1/2010	7110 6605 9590 0013 1886	YES
WILLIAM B HARDIE SR	9/1/2010	7110 6605 9590 0013 1893	YES
WILLIAM B LANDSHEFT	9/1/2010	7110 6605 9590 0013 1909	YES
WILLIAM BRIGGS	9/1/2010	7110 6605 9590 0013 1916	YES
WILLIAM CHARLES BANZHOF	9/1/2010	7110 6605 9590 0013 1923	YES
WILLIAM CLAY MCCORD	9/1/2010	7110 6605 9590 0013 1930	YES
WILLIAM D NORDHAUS	9/2/2010	7110 6605 9590 0013 1954	0013 5112 Unclaimed - Resent 9-30-10
WILLIAM D RAWSON	9/2/2010	7110 6605 9590 0013 1961	
WILLIAM FIELDING DAVENPORT	9/2/2010	7110 6605 9590 0013 1978	YES
WILLIAM G WEBB ESTATE	9/2/2010	7110 6605 9590 0013 1985	YES
WILLIAM HAUSER	9/2/2010	7110 6605 9590 0013 1992	YES
WILLIAM HOFFMAN	9/2/2010	7110 6605 9590 0013 2005	YES
WILLIAM IRVIN LAYLAND	9/15/2010	7110 6605 9590 0013 4085	Postal Mistake- Remailed 10/4/10
WILLIAM J HINES III	9/2/2010	7110 6605 9590 0013 2012	YES
WILLIAM LOUIS DAVANT	9/2/2010	7110 6605 9590 0013 2029	
WILLIAM MICHAEL MYATT	9/15/2010	7110 6605 9590 0013 4092	YES
WILLIAM P RABB TESTAMENTARY TRUST	9/2/2010	7110 6605 9590 0013 2036	YES
WILLIAM P SUTTER REVOCABLE TRUST	9/2/2010	7110 6605 9590 0013 2043	YES
WILLIAM R ARCHER JR 2003 GRANTOR TRUST	9/2/2010	7110 6605 9590 0013 2050	Unclaimed
WILLIAM S RABB	9/2/2010	7110 6605 9590 0013 2067	
WILLIAM SIEGENTHALER JR	9/2/2010	7110 6605 9590 0013 2074	YES
WILLIAM SIMPSON TRUST DTD 12-17-79	9/2/2010	7110 6605 9590 0013 2081	YES
WILLIAM SWINFORD	9/15/2010	7110 6605 9590 0013 3224	YES
WILLIAM W BRAMLETT	9/2/2010	7110 6605 9590 0013 2098	
WILLIAM WARREN COOPER	9/2/2010	7110 6605 9590 0013 2104	YES
WILLIAMS PRODUCTION COMPANY	9/2/2010	7110 6605 9590 0013 2111	YES
WILLIS R. MOULTON	9/2/2010	7110 6605 9590 0013 2128	YES
WINDOM ROYALTIES LLC	9/2/2010	7110 6605 9590 0013 2135	YES
WINTERGREEN ENERGY CORP	9/2/2010	7110 6605 9590 0013 2142	YES
WOODBINE FINANCIAL CORP	9/2/2010	7110 6605 9590 0013 2159	YES
WOOLLEY FAMILY TRUST DTD 3/2/2005	9/2/2010	7110 6605 9590 0013 2166	YES
WORTH D WARE JR ESTATE	9/2/2010	7110 6605 9590 0013 2173	YES
WWR ENTERPRISES INC	9/2/2010	7110 6605 9590 0013 2180	YES
XTO ENERGY INC	9/2/2010	7110 6605 9590 0013 2197	YES
YELLOW QUEEN URANIUM COMPANY	9/2/2010	7110 6605 9590 0013 2203	YES

Before the Oil Conservation Division
Exhibit No. 4 B
Burlington Resources Oil & Gas Company LP
ORDER R-10692, OCD CASE 11601
Initial Hearing: September 30, 2010

SAN JUAN 32-9 UNIT - R-10692

Owners who distribute Production or Production Proceeds

Name	Tracts	Date Mailed	Date Requested Info. Rec.
BP AMERICA PRODUCTION COMPANY	28, 33, 35, 55, 59, 68, 68A, 68B	7/26/2010	Did not receive response
DEVON ENERGY PRODUCTION COMPANY LP	8A	7/26/2010	8/6/2010
ENERGEN RESOURCES CORPORATION	2, 68, 68A, 68B	7/26/2010	Did not receive response
FOUR STAR OIL & GAS COMPANY	49	7/26/2010	8/24/2010
J&M RAYMOND LTD	17, 18	7/26/2010	8/9/2010
JOHN S BROWN JR	17, 18	7/26/2010	Did not receive response
PRODUCTION GATHERING COMPANY LP	2, 68, 68A, 68B	7/26/2010	8/9/2010
ROBERT UMBACH CANCER FOUNDATION	2, 68, 68A, 68B	7/26/2010	Did not receive response
T H MCELVAIN OIL AND GAS PROP	17, 18	7/26/2010	8/23/2010
XTO ENERGY INC	36, 37, 44, 48, 50, 51, 53, 57, 60, 61, 63, 64, 65	7/26/2010	8/6/2010

Before the Oil Conservation Division
Exhibit No. 5
Burlington Resources Oil & Gas Company LP
ORDER R-10692, OCD CASE 11601
Initial Hearing: September 30, 2010



ConocoPhillips
San Juan Business Unit
P.O. Box 4289
Farmington, NM 87499-4289

September 1, 2010

CERTIFIED MAIL
RETURN RECEIPT REQUESTED



TO ALL AFFECTED INTEREST OWNERS

RE: Application of ConocoPhillips Company and Burlington Resources Oil & Gas Company LP, to reopen cases 11601, 11626, 11627, 11628, 11629, 11708, 11709, 11685, 12136 and 11815 to amend the Division orders entered therein to permit the allocation of production in commingled wells by Alternative method approved by the Division prior to commingling, Rio Arriba and San Juan Counties, New Mexico.

CASE NOS: 11601, 11626, 11627, 11628,
11629, 11708, 11709, 11685,
12136 and 11815
(REOPENED)

Ladies and Gentlemen:

This letter is to advise you that ConocoPhillips Company and Burlington Resources Oil & Gas Company, LP have filed the enclosed application with the New Mexico Oil Conservation Division seeking an order reopening Cases 11601, 11626, 11627, 11628, 11629, 11708, 11709, 11685, 12136 and 11815 to amend the Division orders entered therein to permit the allocation of production in commingled wells by any method approved by the Division prior to commingling, Rio Arriba and San Juan Counties, New Mexico. These Units are located in Townships 27, 28, 29, 30 and 32 North, Ranges 5, 6, 7, and 9 West, N.M.P.M., Rio Arriba and San Juan Counties, New Mexico.

This application has been set for hearing before a Division Examiner at 8:15 AM on September 30, 2010. The Hearing will be held in Porter Hall in the Oil Conservation Division's Santa Fe Offices located at 1220 South Saint Francis Drive, Santa Fe, New Mexico 87505. You are not required to attend this hearing, but as an owner of an interest that may be affected by this application, you may appear and present testimony. Failure to appear at that time and become a party of record will preclude you from challenging this matter at a later date.

Application Letter
September 1, 2010
Page 2

Parties appearing in cases are required by Division Rule 1208.B to file a Pre-Hearing Statement with the Oil Conservation Division's Santa Fe office, four days in advance of a scheduled hearing, but at least on the Thursday preceding the hearing. This statement must include:

- Names of the parties and their Attorneys
- A concise statement of the case
- Names of all witnesses the party will call to testify at the hearing
- The approximate time the party will need to present its case; and
- Identification of any procedural matters that are to be resolved prior to the hearing.

If you have any questions in this regard, please contact the undersigned at 505-324-6122 or email to Chuck.Creekmore@ConocoPhillips.com.

Very truly yours,



Chuck Creekmore
Staff Landman
for ConocoPhillips and
Burlington Resources Oil & Gas Company LP

HOLLAND & HART LLP



William F. Carr
wcarr@hollandhart.com

August 31, 2010

BY HAND DELIVERY

Mark E. Fesmire, P.E.
Director
Oil Conservation Division
New Mexico Department of Energy,
Minerals and Natural Resources
1220 South Saint Francis Drive
Santa Fe, New Mexico 87505

RECEIVED OOD
2010 AUG 31 PM 3:25

Re: Case Nos. 11601, 11626, 11627, 11628, 11629, 11708, 11709, 11685, 12136, and 11815
(Reopened): Application of ConocoPhillips Company and Burlington Resources Oil & Gas Company, LP to reopen Cases 11601, 11626, 11627, 11628, 11629, 11708, 11709, 11685, 12136 and 11815 to amend the Division orders entered therein to permit the allocation of production in commingled wells by Alternative methods approved by the Division prior to commingling, Rio Arriba and San Juan Counties, New Mexico.

Dear Mr. Fesmire:

Enclosed is the application of ConocoPhillips Company and Burlington Resources Oil & Gas Company, LP in the above-referenced matter and a copy of a legal advertisement. Applicants request that this application be included on the September 30, 2010 examiner hearing docket.

Your attention to this application is appreciated.

Very truly yours,

William F. Carr
Attorney for ConocoPhillips Company and
Burlington Resources Oil & Gas Company, LP

cc: Charles E. Creekmore

Holland & Hart LLP

Phone [505] 988-4421 Fax [505] 983-6043 www.hollandhart.com

110 North Guadalupe Suite 1 Santa Fe, NM 87501 Mailing Address P.O. Box 2208 Santa Fe, NM 87504-2208

Aspen Billings Boise Boulder Cheyenne Colorado Springs Denver Denver Tech Center Jackson Hole Salt Lake City Santa Fe Washington, D.C. ☺

STATE OF NEW MEXICO
DEPARTMENT OF ENERGY, MINERALS AND NATURAL RESOURCES
OIL CONSERVATION DIVISION

APPLICATION OF CONOCOPHILLIPS COMPANY AND BURLINGTON RESOURCES OIL & GAS COMPANY, LP TO REOPEN CASES 11601, 11626, 11627, 11628, 11629, 11708, 11709, 11685, 12136 AND 11815 TO AMEND THE DIVISION ORDERS ENTERED THEREIN TO PERMIT THE ALLOCATION OF PRODUCTION IN COMMINGLED WELLS BY ALTERNATIVE METHODS APPROVED BY THE DIVISION PRIOR TO COMMINGLING, RIO ARRIBA AND SAN JUAN COUNTIES, NEW MEXICO.

CASE NOS. 11601, 11626, 11627, 11628,
11629, 11708, 11709, 11685,
12136 AND 11815
(REOPENED)

APPLICATION

CONOCOPHILLIPS COMPANY and BURLINGTON RESOURCES OIL & GAS COMPANY, LP (hereinafter referred to as ConocoPhillips/ Burlington), through their undersigned attorneys, hereby make application for orders amending certain Oil Conservation Division orders that approved voluntary units which ConocoPhillips operates in Rio Arriba and San Juan Counties, New Mexico, to permit the allocation of downhole commingled production in wellbores by alternative methods approved by the Division prior to commingling and in support of its application states:

1. ConocoPhillips/Burlington operate certain voluntary units in Rio Arriba and San Juan Counties that were approved by the following Division orders:

- A. Order No. R-10692 (Case No. 11601) San Juan Unit 32-9 Unit;
- B. Order No. R-10694 (Case No. 11626) San Juan Unit 27-5 Unit;
- C. Order No. R-10695 (Case No. 11627) San Juan Unit 28-5 Unit;
- D. Order No. R-10696 (Case No. 11628) San Juan Unit 28-6 Unit;
- E. Order No. R-10697 (Case No. 11629) San Juan Unit 29-7 Unit;
- F. Order No. R-10707 (Case No. 11708) San Juan Unit 29-5 Unit;
- G. Order No. R-10771 (Case No. 11709) San Juan Unit 30-5 Unit
- H. Order No. R-10786 (Case No. 11685) Canyon Largo Unit;
- I. Order No. R-10476-B (Case No. 11815) San Juan 28-7 Unit; and
- J. Order No. R-11187 (Case No. 12136) San Juan Unit 29-6 Unit.

These units are hereinafter collectively referred to as the "Unit Approval Orders."

2. Each of the Unit Approval Orders authorizes the allocation of commingled production by either the subtraction or fixed allocation method.

3. The allocation of production in certain new commingled wells by the use of a gas composition analysis has been approved by the Division but the Unit Approval Orders that limit allocation to the subtraction and fixed allocation methods may prevent its use.

4. ConocoPhillips therefore seeks amendment of each of the Unit Approval Orders by the addition of a finding that provides: "Nothing in this order shall prevent the use of alternative methods for the allocation of commingled production where the method has been or subsequently is approved by the Division prior to commingling."

5. The proposed amendment of each of the Unit Approval Orders is in the interest of conservation, the prevention of waste and protection of correlative rights and should be approved.

WHEREFORE, ConocoPhillips Company and Burlington Resources Oil & Gas Company LP request that this application be set for hearing before an Examiner of the Oil Conservation Division on September 30, 2010, that notice be given as required by law and the rules of the Division, and that this application be granted.

Respectfully submitted,
HOLLAND & HART, LLP

By: 

William F. Carr
Ocean Munds-Dry
Post Office box 2208
Santa Fe, New Mexico 87504
Telephone: (505) 988-4421

ATTORNEYS FOR CONOCOPHILLIPS COMPANY AND
BURLINGTON RESOURCES OIL & GAS COMPANY, LP

Cases 11601, 11626, 11627, 11628, 11629, 11708, 11709, 11685, 12136 and 11815 (Reopened). Application of ConocoPhillips Company and Burlington Resources Oil & Gas Company, LP to reopen Cases 11601, 11626, 11627, 11628, 11629, 11708, 11709, 11685, 12136 and 11815 to amend the Division orders entered therein to permit the allocation of production in commingled wells by alternative methods approved by the Division prior to commingling, Rio Arriba and San Juan Counties, New Mexico. These units are contiguous and the center of the unit areas is approximately 9 miles southeast of Gobernador Camp, New Mexico, except for the San Juan 32-9 unit (Case No. 11601), the center of which is located approximately 5 miles southeast of Gobernador Camp, New Mexico.

GAS COMPOSITION ANALYSIS COMMINGLE PROJECT -- NOTICE FOLLOW-UP CORRESPONDENCE

9/7/2010:

Mary Gomez email response to inquiry
Pete Schram responded to inquiry on phone
John Bears responded to inquiry on phone
____ Gomez #505-2716-6887 -- phone number was incorrect and first name a blur.

9/8/10:

Darlene Wynn sent return email
Don Mangum #435-676-8386 -- returned phone call and discussed with him.
Bill Ritter responded to inquiry on phone
Gene Lakey responded to inquiry on phone
Chuck Wallace w/ Wells Fargo #432-685-5148 resent Certified mail for Unbach Cancer Foundation & Corazon Gomez LLC to him: PO Box 1959, Midland TX 79710.
Lela Bennett #425-453-1405 -- returned call and left message
Mike Ushler #214-378-1212 & 214-384-6072 returned call and discussed project.
Nick Candelaria #402-7635 & 325-4202 called back and discussed project.
____ Gomez #505-716-6887 -- he called back and we discussed project.
Dan Bates #9719 -- he call and we discussed sharing information with Four Star.
Clarise? & Fred Lunn #512-382-9707 -- called back and discussed project.
Matt Mayes #303-680-7670 -- discussed project and how to get his father's interest over to Fischer Mayes LLC (call owner relations).
Joni Clark responded to Fidel Candelaria et al inquiry

9/9/10:

Lela Bennett #425-453-1405 -- returned call and discussed project with her.

9/10/2010:

Marquita Vasquez #505-632-2422 -- returned call and discussed project.
Paul Candelaria #505-325-6596 or 330-0315 -- returned call and discussed project.

9/13/2010:

Paul Candelaria wrote letter of explanation at his request.
Fidel Candelaria wrote letter of explanation at his request.

9/15/2010

BP -- Craig Carley wrote letter of explanation at Bill Carr's request.
Margaret Helsasilva 505-828-0490 -- returned call and discussed project.

9/16/2010:

Broadway Bank Kenny Dorbandt 210-283-6725 -- returned call and discussed project and follow-up email.

9/20/2010

Linda Handley she called and explained our petition to the NMOCD.

9/22/2010:

BP, Pippa Zimmerman she called and explained our petition to the NMOCD.

GAS COMPOSITION ANALYSIS COMMINGLE PROJECT -- NOTICE FOLLOW-UP CORRESPONDENCE

9/28/10:

Ed Gordons

he called on behalf of mother and explained our petition to the NMOCD.

10/1/2010:

Angela Lujan

575-779-5266; personal representative, called, explained petition to her.

10/5/2010:

Charles _____, WGT Oil,

214-985-6783; called and explained our petition to the NMOCD.

10/6/2010:

Don Ilso

707-257-3456; called and explained our petition to the NMOCD.

10/8/2010:

Kathy Norberg, Maralo

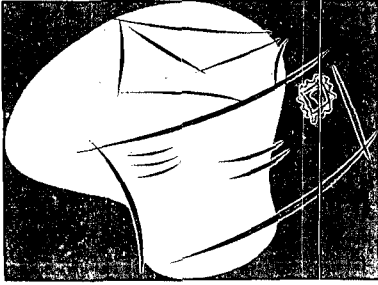
emailed explanation of our petition to the NMOCD.

10/11/2010:

Colena _____

602-670-4154; called and explained our petition to the NMOCD.

Before the Oil Conservation Division
Exhibit No. 6
Burlington Resources Oil & Gas Company LP
ORDER R-10692, OCD CASE 11601
Initial Hearing: September 30, 2010



COPIES OF THE
CERTIFIED GREEN
CARDS ARE LOCATED
IN SEPARATE BINDERS

Before the Oil Conservation Division
Exhibit No. 7
Burlington Resources Oil & Gas Company LP
ORDER R-10692, OCD CASE 11601
Initial Hearing: September 30, 2010

AFFIDAVIT OF PUBLICATION

Ad No. 65123

STATE OF NEW MEXICO County of San Juan:

CONNIE PRUITT, being duly sworn says:
That she is the ADVERTISING DIRECTOR of THE DAILY TIMES, a daily newspaper of general circulation published in English at Farmington, said county and state, and that the hereto attached Legal Notice was published in a regular and entire issue of the said DAILY TIMES, a daily newspaper duly qualified for the purpose within the meaning of Chapter 167 of the 1937 Session Laws of the State of New Mexico for publication and appeared in the Internet at The Daily Times web site on the following day(s):

Thursday, September 9, 2010

And the cost of the publication is \$139.26

Connie Pruitt

ON 9/15/10 CONNIE PRUITT appeared before me, whom I know personally to be the person who signed the above document.

Christine Sellers
My Commission Expires 11/05/11

COPY OF PUBLICATION

**STATE OF NEW MEXICO
ENERGY, MINERALS AND NATURAL RESOURCES DEPARTMENT
OIL CONSERVATION DIVISION
SANTA FE, NEW MEXICO**

The State of New Mexico through its Oil Conservation Division hereby gives notice pursuant to law and the Rules and Regulations of the Division of the following public hearing to be held at 8:15 A.M. on September 30, 2010, in the Oil Conservation Division Hearing Room at 1220 South St. Francis, Santa Fe, New Mexico, before an examiner, an individual with disability who is in need of a reader, amplifier, qualified sign language interpreter, or any other form of auxiliary aid or service to attend or participate in the hearing, please contact: Florene Davidson at 505-476-3458, or through the New Mexico Relay Network, 1-800-459-1779 by September 20, 2010. Public documents including the agenda and minutes can be provided in various accessible forms. Please contact Florene Davidson if a summary or other type of accessible form is needed.

STATE OF NEW MEXICO:
All parties and persons having any right, title, interest or claim in the following cases and notice to the public:

(NOTE: All land descriptions herein refer to the New Mexico Principal Meridian whether or not so stated.)

Cases 11501, 11626, 11627, 11628, 11629, 11708, 11709, 11685 and 12136 (REG ENED)

Application of ConocoPhillips Company and Burlington Resources Oil & Gas Company, Inc. to locate the oil and gas units 11501, 11626, 11627, 11628, 11629, 11708, 11709, 11685 and 12136 and to conduct the Division's rules and regulations for the allocation of production. Commenced under the rules and regulations of the Division for the purpose of conducting the Allocation of Production and San Juan Counties, New Mexico. These units are contiguous and the center of the unit areas is approximately 2.5 miles southeast of Gobernador Camp, New Mexico, 6.5 miles east of the San Juan County Courthouse, and approximately 2.5 miles southeast of Gobernador Camp, New Mexico.

Gives under the Seal of the State of New Mexico, Oil Conservation Division at Santa Fe, New Mexico on this 9th day of September 2010.

**STATE OF NEW MEXICO
OIL CONSERVATION DIVISION**
Mark E. Fennine, P.E., Director

Case No. 65123 published in The Daily Times on Thursday, September 9, 2010.

FROM :RioGrandeSun

FAX NO. :505 753 2140

Sep. 03 2010 11:16AM P3

STATE OF NEW MEXICO
ENERGY, MINERALS AND
NATURAL RESOURCES
DEPARTMENT
OIL CONSERVATION
DIVISION

SANTA FE, NEW MEXICO

The State of New Mexico through its Oil Conservation Division hereby gives notice pursuant to law and the Rules and Regulations of the Division of the following public hearing to be held at 8:15 A.M. on September 30, 2010, in the Oil Conservation Division Hearing Room at 1220 South St. Francis, Santa Fe, New Mexico, before an examiner duly appointed for the hearing. If you are an individual with a disability who is in need of a reader, amplifier, qualified sign language interpreter, or any other form of auxiliary aid or service to attend or participate in the hearing, please contact: Florene Davidson at 505-476-3458 or through the New Mexico Relay Network, 1-800-669-1779 by September 20, 2010. Public documents including the agenda and minutes, can be provided in various accessible forms. Please contact Florene Davidson if a summary or other type of accessible form is needed.

STATE OF NEW MEXICO

IQ:

All named parties and persons having any right, title, interest or claim in the following cases and notice to the public.

(NOTE: All land descriptions herein refer to the New Mexico Principal Meridian whether or not so stated.)

Cases 11601, 11626, 11627, 11628, 11629, 11708, 11709, 11685 and 12136 (REOPENED)

Application of ConocoPhillips Company and Burlington Resources Oil & Gas Company, LP to reopen Cases 11601, 11626, 11627, 11628, 11629, 11708, 11709, 11685, 12136 and 11813 to amend the Division orders entered therein to permit the allocation of production in commingled wells by alternative methods approved by the Division prior to commingling, Rio Arriba and San Juan Counties, New Mexico. These units are contiguous and the center of the unit areas is approximately 9 miles southeast of Gobernador Camp, New Mexico, except for the San Juan 32-0 unit (Case No. 11601), the center of which is located approximately 5 miles southeast of Gobernador Camp, New Mexico.

Given Under the Seal of the State of New Mexico Oil Con-

FROM :RioGrandeSun

FAX NO. :505 753 2140

Sep. 03 2010 11:16AM P4

ervation Division at Santa
Fe, New Mexico on this 3rd
day of September 2010.

STATE OF NEW MEXICO
OIL CONSERVATION
DIVISION

Mark E. Feamle, P.E.,
Director
(Published September 9,
2010)

Before the Oil Conservation Division
Exhibit No. 8
Burlington Resources Oil & Gas Company LP
ORDER R-10692, OCD CASE 11601
Initial Hearing: September 30, 2010

New Mexico Energy, Minerals and Natural Resources Department

Bill Richardson
Governor

Jim Noel
Cabinet Secretary

Karen W. Garcia
Deputy Cabinet Secretary

Mark Fesmire
Division Director
Oil Conservation Division



August 4, 2010

Mr. Chuck Creekmore
Staff Landman
ConocoPhillips
San Juan Business Unit
Post Office Box 4289
Farmington, New Mexico 87449-4289

 **COPY**

Re: Amended Letter addressing Alternative Allocation Method for certain new drill commingled wells in the Mesaverde and Dakota formations based on Gas Composition Analysis.
Supersedes Letter Dated July 20, 2010

Dear Mr. Creekmore:

The Oil Conservation Division has considered the information presented to it by ConocoPhillips in Santa Fe on May 13, 2010 concerning the use of Gas Composition Analysis based allocations as an alternative method for allocating production from certain new commingled wells completed in the Blanco Mesaverde Pool and Basin Dakota Pool in the San Juan Basin.

The Oil Conservation Division approves in principle the request of ConocoPhillips and wholly owned subsidiaries, ConocoPhillips Company and Burlington Resources Oil & Gas Company LP (hereinafter collectively "ConocoPhillips"), to use Gas Composition Analysis based allocations in newly commingled wells where appropriate information exists for it to accurately allocate production between the Mesaverde and Dakota formations. From your presentation, it appears that allocating gas production from the Mesaverde and Dakota formations in new commingled wells using Gas Composition Analysis is valid where endpoints are known and show sufficient contrast. This methodology requires the establishment of local endpoints from gas samples in pure Mesaverde and pure Dakota gas streams. The known endpoints for hydrocarbon members are then used in conjunction with the results of a gas sample analysis from the combined flow stream in a new commingled well to calculate an allocation of the gas contribution from each formation.

Relative contributions from the Mesaverde and Dakota formations in new commingled wells can vary in time particularly in the early life of a well. To address this, ConocoPhillips will first obtain an initial gas sample at the time of completion after flow back to calculate an initial formation allocation. An additional gas sample will be taken three months after the initial completion to update the allocation. Samples will continue to be obtained at approximately three



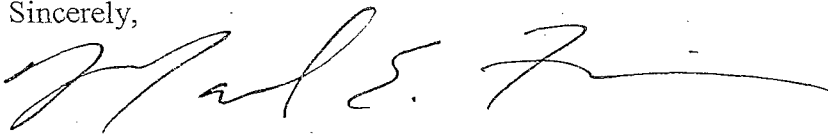
Letter to Chuck Creekmore

Page 2

month intervals until the allocation appears to reach stabilization. ConocoPhillips will provide the New Mexico Oil Conservation Division a report after the initial completion and a final report after allocation stabilization. The final report will contain supporting documentation justifying the allocation of production between these formations and will contain each of the allocation percentages determined by Gas Composition Analysis. Commingling applications shall be filed with the Division's District office in Aztec allocating production based on this alternative method of allocation.

When notice to owners in the mineral estate of a new commingled well is required by Oil Conservation Division Rule 19.15.4.12A.(6) NMAC, the method of allocation will be indicated on the Division Form C-103 or other appropriate New Mexico Oil Conservation Division form.

Sincerely,



Mark E. Fesmire, P.E.
Acting Director

cc: William F. Carr, Esq.
Holland & Hart, LLP
Post Office Box 2208
Santa Fe, New Mexico 87504
Daniel Sanchez, NMOCD, Santa Fe
Charlie Perrin, NMOCD, Aztec



ConocoPhillips
San Juan Business Unit
P.O. Box 4289
Farmington, NM 87499-4289

July 26, 2010

BP AMERICA PRODUCTION COMPANY
ATTN: CRAIG CARLEY
501 WESTLAKE PARK BLVD
HOUSTON, TX 77079-2699

RE: Request for Ownerships
Notice of Commingling
San Juan 32-9 Unit
San Juan County, NM

Dear Working Interest Owner:

Burlington Resources Oil & Gas Company LP (BROG), a subsidiary of ConocoPhillips Company, or ConocoPhillips Company as Unit Operator of the San Juan 32-9 Unit, is currently in the process of amending Order # R-10692 as it pertains to the Mesaverde and Dakota Reservoirs in the captioned Unit. We are required by State regulation to give Notice to all interest owners in the affected Reservoirs in a Hearing to Amend the Order.

Our records indicate that you are distributing proceeds or own in Tract(s) 2, 4, 6, 8, 9, 10, 11, 12, 19, 27, 28, 33, 35, 55, 59, 68, 68A, 68B and pursuant to the Unit Agreement we request that you share all the current owners and their addresses that you are responsible for so that we may accomplish our obligation to give them Notice. If we do not receive this information from you on or before *August 25, 2010*, we will assume that you will be providing notice to the interest owners you pay when the Application to Amend the Order is made.

San Juan 32-9 Unit

7/26/2010

Page 2

Thank you in advance for your time and consideration given to this matter. If you have any questions you can reach me at the email address or phone number below or you may contact Dawn Howell at 505-599-4030.

Respectfully yours,



Charles E. (Chuck) Creekmore

Staff Landman, RPL

505.324.6122 Office

505.320.9910 Cell

505.326.9781 Fax

CEC/dh



ConocoPhillips
San Juan Business Unit
P.O. Box 4289
Farmington, NM 87499-4289

July 26, 2010

DEVON ENERGY PRODUCTION COMPANY LP
ATTN: JAN WOOLDRIDGE
20 NORTH BROADWAY
OKLAHOMA CITY, OK 73102

RE: Request for Ownerships
Notice of Commingling
San Juan 32-9 Unit
San Juan County, NM

Dear Working Interest Owner:

Burlington Resources Oil & Gas Company LP (BROG), a subsidiary of ConocoPhillips Company, or ConocoPhillips Company as Unit Operator of the San Juan 32-9 Unit, is currently in the process of amending Order # R-10692 as it pertains to the Mesaverde and Dakota Reservoirs in the captioned Unit. We are required by State regulation to give Notice to all interest owners in the affected Reservoirs in a Hearing to Amend the Order.

Our records indicate that you are distributing proceeds or own in Tract(s) 8A and pursuant to the Unit Agreement we request that you share all the current owners and their addresses that you are responsible for so that we may accomplish our obligation to give them Notice. If we do not receive this information from you on or before *August 25, 2010*, we will assume that you will be providing notice to the interest owners you pay when the Application to Amend the Order is made.

Thank you in advance for your time and consideration given to this matter. If you have any questions you can reach me at the email address or phone number below or you may contact Dawn Howell at 505-599-4030.

Respectfully yours,



Charles E. (Chuck) Creekmore
Staff Landman, RPL
505.324.6122 Office
505.320.9910 Cell
505.326.9781 Fax

CEC/dh



ConocoPhillips
San Juan Business Unit
P.O. Box 4289
Farmington, NM 87499-4289

July 26, 2010

ENERGEN RESOURCES CORPORATION
ATTN: BILLIE E LOPEZ
605 RICHARD ARRINGTON JR BLVD
BIRMINGHAM, AL 35203-2707

RE: Request for Ownerships
Notice of Commingling
San Juan 32-9 Unit
San Juan County, NM

Dear Working Interest Owner:

Burlington Resources Oil & Gas Company LP (BROG), a subsidiary of ConocoPhillips Company, or ConocoPhillips Company as Unit Operator of the San Juan 32-9 Unit, is currently in the process of amending Order # R-10692 as it pertains to the Mesaverde and Dakota Reservoirs in the captioned Unit. We are required by State regulation to give Notice to all interest owners in the affected Reservoirs in a Hearing to Amend the Order.

Our records indicate that you are distributing proceeds or own in Tract(s) 2, 68, 68A, 68B and pursuant to the Unit Agreement we request that you share all the current owners and their addresses that you are responsible for so that we may accomplish our obligation to give them Notice. If we do not receive this information from you on or before *August 25, 2010*, we will assume that you will be providing notice to the interest owners you pay when the Application to Amend the Order is made.

Thank you in advance for your time and consideration given to this matter. If you have any questions you can reach me at the email address or phone number below or you may contact Dawn Howell at 505-599-4030.

Respectfully yours,



Charles E. (Chuck) Creekmore
Staff Landman, RPL
505.324.6122 Office
505.320.9910 Cell
505.326.9781 Fax

CEC/dh



ConocoPhillips
San Juan Business Unit
P.O. Box 4289
Farmington, NM 87499-4289

July 26, 2010

FOUR STAR OIL & GAS COMPANY
NOJV MANAGER
PO BOX 2100
HOUSTON, TX 77252

RE: Request for Ownerships
Notice of Commingling
San Juan 32-9 Unit
San Juan County, NM

Dear Working Interest Owner:

Burlington Resources Oil & Gas Company LP (BROG), a subsidiary of ConocoPhillips Company, or ConocoPhillips Company as Unit Operator of the San Juan 32-9 Unit, is currently in the process of amending Order # R-10692 as it pertains to the Mesaverde and Dakota Reservoirs in the captioned Unit. We are required by State regulation to give Notice to all interest owners in the affected Reservoirs in a Hearing to Amend the Order.

Our records indicate that you are distributing proceeds or own in Tract(s) 49 and pursuant to the Unit Agreement we request that you share all the current owners and their addresses that you are responsible for so that we may accomplish our obligation to give them Notice. If we do not receive this information from you on or before *August 25, 2010*, we will assume that you will be providing notice to the interest owners you pay when the Application to Amend the Order is made.

Thank you in advance for your time and consideration given to this matter. If you have any questions you can reach me at the email address or phone number below or you may contact Dawn Howell at 505-599-4030.

Respectfully yours,



Charles E. (Chuck) Creekmore
Staff Landman, RPL
505.324.6122 Office
505.320.9910 Cell
505.326.9781 Fax

CEC/dh



ConocoPhillips
San Juan Business Unit
P.O. Box 4289
Farmington, NM 87499-4289

July 26, 2010

J&M RAYMOND LTD
ATTN: RHONDA RAY
PO BOX 291445
KERRVILLE, TX 78029-1445

RE: Request for Ownerships
Notice of Commingling
San Juan 32-9 Unit
San Juan County, NM

Dear Working Interest Owner:

Burlington Resources Oil & Gas Company LP (BROG), a subsidiary of ConocoPhillips Company, or ConocoPhillips Company as Unit Operator of the San Juan 32-9 Unit, is currently in the process of amending Order # R-10692 as it pertains to the Mesaverde and Dakota Reservoirs in the captioned Unit. We are required by State regulation to give Notice to all interest owners in the affected Reservoirs in a Hearing to Amend the Order.

Our records indicate that you are distributing proceeds or own in Tract(s) 17, 18 and pursuant to the Unit Agreement we request that you share all the current owners and their addresses that you are responsible for so that we may accomplish our obligation to give them Notice. If we do not receive this information from you on or before *August 25, 2010*, we will assume that you will be providing notice to the interest owners you pay when the Application to Amend the Order is made.

San Juan 32-9 Unit

7/26/2010

Page 2

Thank you in advance for your time and consideration given to this matter. If you have any questions you can reach me at the email address or phone number below or you may contact Dawn Howell at 505-599-4030.

Respectfully yours,



Charles E. (Chuck) Creekmore

Staff Landman, RPL

505.324.6122 Office

505.320.9910 Cell

505.326.9781 Fax

CEC/dh



ConocoPhillips
San Juan Business Unit
P.O. Box 4289
Farmington, NM.87499-4289

July 26, 2010

JOHN S BROWN JR
c/o JACK WILHELM
1108 LAVACA ST. STE 110-429
AUSTIN, TX 78701

RE: Request for Ownerships
Notice of Commingling
San Juan 32-9 Unit
San Juan County, NM

Dear Working Interest Owner:

Burlington Resources Oil & Gas Company LP (BROG), a subsidiary of ConocoPhillips Company, or ConocoPhillips Company as Unit Operator of the San Juan 32-9 Unit, is currently in the process of amending Order # R-10692 as it pertains to the Mesaverde and Dakota Reservoirs in the captioned Unit. We are required by State regulation to give Notice to all interest owners in the affected Reservoirs in a Hearing to Amend the Order.

Our records indicate that you are distributing proceeds or own in Tract(s) 17, 18 and pursuant to the Unit Agreement we request that you share all the current owners and their addresses that you are responsible for so that we may accomplish our obligation to give them Notice. If we do not receive this information from you on or before *August 25, 2010*, we will assume that you will be providing notice to the interest owners you pay when the Application to Amend the Order is made.

San Juan 32-9 Unit

7/26/2010

Page 2

Thank you in advance for your time and consideration given to this matter. If you have any questions you can reach me at the email address or phone number below or you may contact Dawn Howell at 505-599-4030.

Respectfully yours,

A handwritten signature in cursive script that reads "Chuck Creekmore".

Charles E. (Chuck) Creekmore
Staff Landman, RPL
505.324.6122 Office
505.320.9910 Cell
505.326.9781 Fax

CEC/dh



ConocoPhillips
San Juan Business Unit
P.O. Box 4289
Farmington, NM 87499-4289

July 26, 2010

PRODUCTION GATHERING COMPANY LP
ATTN: GREG VANCE
8080 N CENTRAL EXPY, STE 1090
DALLAS, TX 75206

RE: Request for Ownerships
Notice of Commingling
San Juan 32-9 Unit
San Juan County, NM

Dear Working Interest Owner:

Burlington Resources Oil & Gas Company LP (BROG), a subsidiary of ConocoPhillips Company, or ConocoPhillips Company as Unit Operator of the San Juan 32-9 Unit, is currently in the process of amending Order # R-10692 as it pertains to the Mesaverde and Dakota Reservoirs in the captioned Unit. We are required by State regulation to give Notice to all interest owners in the affected Reservoirs in a Hearing to Amend the Order.

Our records indicate that you are distributing proceeds or own in Tract(s) 2, 68, 68A, 68B and pursuant to the Unit Agreement we request that you share all the current owners and their addresses that you are responsible for so that we may accomplish our obligation to give them Notice. If we do not receive this information from you on or before *August 25, 2010*, we will assume that you will be providing notice to the interest owners you pay when the Application to Amend the Order is made.

Thank you in advance for your time and consideration given to this matter. If you have any questions you can reach me at the email address or phone number below or you may contact Dawn Howell at 505-599-4030.

Respectfully yours,



Charles E. (Chuck) Creekmore
Staff Landman, RPL
505.324.6122 Office
505.320.9910 Cell
505.326.9781 Fax

CEC/dh



ConocoPhillips
San Juan Business Unit
P.O. Box 4289
Farmington, NM 87499-4289

July 26, 2010

ROBERT UMBACH CANCER FOUNDATION
c/o WELLS FARGO BANK- CHARLES WALLACE
PO BOX 1959
MIDLAND, TX 79702-1959

RE: Request for Ownerships
Notice of Commingling
San Juan 32-9 Unit
San Juan County, NM

Dear Working Interest Owner:

Burlington Resources Oil & Gas Company LP (BROG), a subsidiary of ConocoPhillips Company, or ConocoPhillips Company as Unit Operator of the San Juan 32-9 Unit, is currently in the process of amending Order # R-10692 as it pertains to the Mesaverde and Dakota Reservoirs in the captioned Unit. We are required by State regulation to give Notice to all interest owners in the affected Reservoirs in a Hearing to Amend the Order.

Our records indicate that you are distributing proceeds or own in Tract(s) 2, 68, 68A, 68B and pursuant to the Unit Agreement we request that you share all the current owners and their addresses that you are responsible for so that we may accomplish our obligation to give them Notice. If we do not receive this information from you on or before *August 25, 2010*, we will assume that you will be providing notice to the interest owners you pay when the Application to Amend the Order is made.

Thank you in advance for your time and consideration given to this matter. If you have any questions you can reach me at the email address or phone number below or you may contact Dawn Howell at 505-599-4030.

Respectfully yours,



Charles E. (Chuck) Creekmore
Staff Landman, RPL
505.324.6122 Office
505.320.9910 Cell
505.326.9781 Fax

CEC/dh



ConocoPhillips
San Juan Business Unit
P.O. Box 4289
Farmington, NM 87499-4289

July 26, 2010

T H MCELVAIN OIL AND GAS PROP
ATTN: MR. RICK HARRIS
1050 17TH ST., SUITE 1800
DENVER, CO 80265

RE: Request for Ownerships
Notice of Commingling
San Juan 32-9 Unit
San Juan County, NM

Dear Working Interest Owner:

Burlington Resources Oil & Gas Company LP (BROG), a subsidiary of ConocoPhillips Company, or ConocoPhillips Company as Unit Operator of the San Juan 32-9 Unit, is currently in the process of amending Order # R-10692 as it pertains to the Mesaverde and Dakota Reservoirs in the captioned Unit. We are required by State regulation to give Notice to all interest owners in the affected Reservoirs in a Hearing to Amend the Order.

Our records indicate that you are distributing proceeds or own in Tract(s) 17, 18 and pursuant to the Unit Agreement we request that you share all the current owners and their addresses that you are responsible for so that we may accomplish our obligation to give them Notice. If we do not receive this information from you on or before *August 25, 2010*, we will assume that you will be providing notice to the interest owners you pay when the Application to Amend the Order is made.

Thank you in advance for your time and consideration given to this matter. If you have any questions you can reach me at the email address or phone number below or you may contact Dawn Howell at 505-599-4030.

Respectfully yours,



Charles E. (Chuck) Creekmore
Staff Landman, RPL
505.324.6122 Office
505.320.9910 Cell
505.326.9781 Fax

CEC/dh



ConocoPhillips
San Juan Business Unit
P.O. Box 4289
Farmington, NM 87499-4289

July 26, 2010

XTO ENERGY INC
ATTN: MR. MIKE BLISSIT
810 HOUSTON ST
FORT WORTH, TX 76102-6298

RE: Request for Ownerships
Notice of Commingling
San Juan 32-9 Unit
San Juan County, NM

Dear Working Interest Owner:

Burlington Resources Oil & Gas Company LP (BROG), a subsidiary of ConocoPhillips Company, or ConocoPhillips Company as Unit Operator of the San Juan 32-9 Unit, is currently in the process of amending Order # R-10692 as it pertains to the Mesaverde and Dakota Reservoirs in the captioned Unit. We are required by State regulation to give Notice to all interest owners in the affected Reservoirs in a Hearing to Amend the Order.

Our records indicate that you are distributing proceeds or own in Tract(s) 13, 15, 16A, 21, 22, 24, 26, 31, 36, 37, 44, 48, 50, 51, 53, 57, 60, 61, 63, 64, 65 and pursuant to the Unit Agreement we request that you share all the current owners and their addresses that you are responsible for so that we may accomplish our obligation to give them Notice. If we do not receive this information from you on or before *August 25, 2010*, we will assume that you will be providing notice to the interest owners you pay when the Application to Amend the Order is made.

San Juan 32-9 Unit

7/26/2010

Page 2

Thank you in advance for your time and consideration given to this matter. If you have any questions you can reach me at the email address or phone number below or you may contact Dawn Howell at 505-599-4030.

Respectfully yours,



Charles E. (Chuck) Creekmore

Staff Landman, RPL

505.324.6122 Office

505.320.9910 Cell

505.326.9781 Fax

CEC/dh