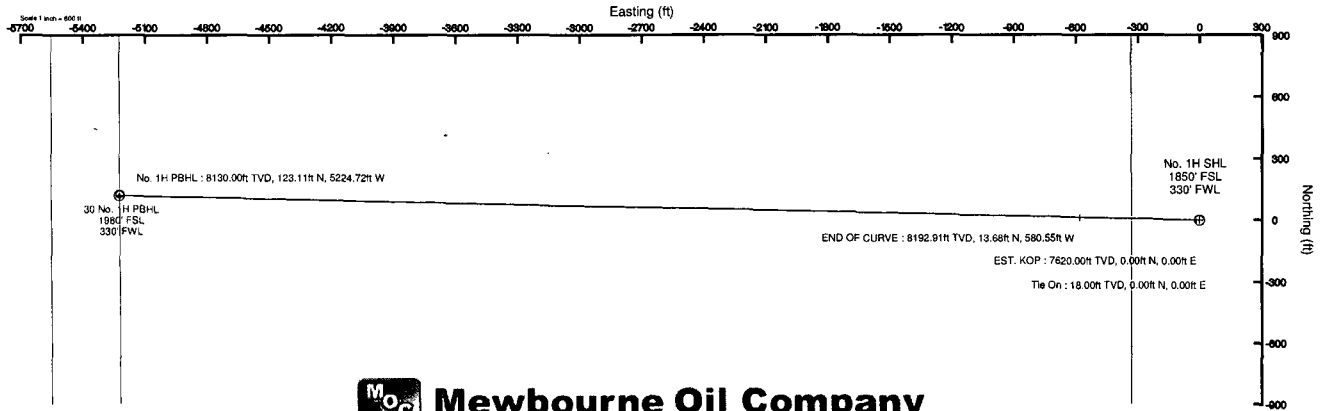


Mewbourne Oil Company

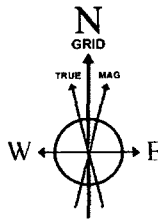
Location: Eddy County, NM Slot: No. 1H SHL
 Field: (Bradley) Sec 29, T18S, R30E Well: No. 1H
 Facility: Bradley 30 Fed Com No. 1H Wellbore: No. 1H PWB

Well Profile Data

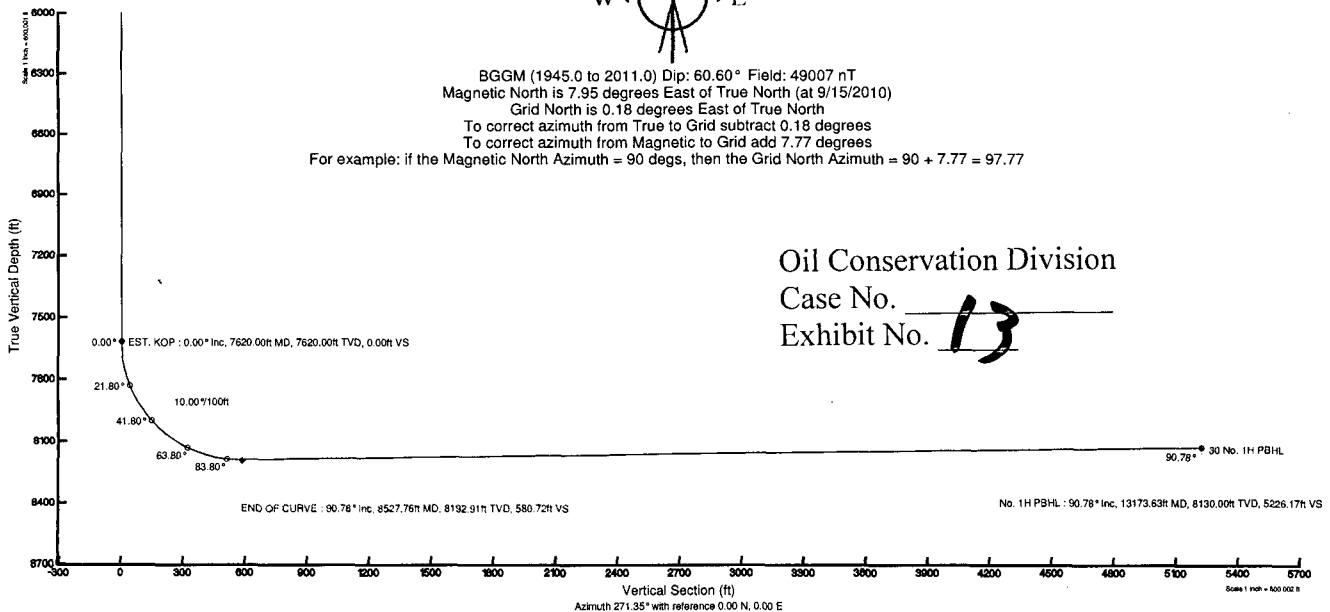
Design Comment	MD (ft)	Inc (°)	Az (°)	TVD (ft)	Local N (ft)	Local E (ft)	DLS (°/100ft)	VS (ft)
Tie On	18.00	0.000	271.350	18.00	0.00	0.00	0.00	0.00
EST. KOP	7620.00	0.000	271.350	7620.00	0.00	0.00	0.00	0.00
END OF CURVE	8527.76	90.776	271.350	8192.91	13.68	-580.55	10.00	580.72
No. 1H PBHL	13173.63	90.776	271.350	8192.00	123.11	-5224.72	0.00	5226.17



Plot reference wellpath is Prelim_1	
True vertical depths are referenced to Rig on No. 1H SHL (KB)	Grid System: NAD27 / TM New Mexico State Planes, Eastern Zone (3001), US feet
Measured depths are referenced to Rig on No. 1H SHL (KB)	North Reference: Grid north
Rig on No. 1H SHL (KB) to Mean Sea Level: 3442 feet	Scale: True distance
Mean Sea Level to Mud line (Facility: Bradley 30 Fed Com No. 1H): -3424 feet	Depths are in feet
Coordinates are in feet referenced to Slot	Created by: Victor Hernandez on 9/16/2010



BGGM (1945.0 to 2011.0) Dip: 60.60° Field: 49007 nT
 Magnetic North is 7.95 degrees East of True North (at 9/15/2010)
 Grid North is 0.18 degrees East of True North
 To correct azimuth from True to Grid subtract 0.18 degrees
 To correct azimuth from Magnetic to Grid add 7.77 degrees
 For example: if the Magnetic North Azimuth = 90 degs, then the Grid North Azimuth = 90 + 7.77 = 97.77



Oil Conservation Division
 Case No. _____
 Exhibit No. **13**

Planned Wellpath Report

 Mewbourne Oil Company

Prelim_1
Page 1 of 4



REFERENCE WELLPATH IDENTIFICATION

Operator	Mewbourne Oil Company	Slot	No. 1H SHL
Area	Eddy County, NM	Well	No. 1H
Field	(Bradley) Sec 29, T18S, R30E	Wellbore	No. 1H PWB
Facility	Bradley 30 Fed Com No. 1H		

REPORT SETUP INFORMATION

Projection System	NAD27 / TM New Mexico State Planes, Eastern Zone (3001), US feet	Software System	WellArchitect® 2.0
North Reference	Grid	User	Victor Hernandez
Scale	0.999921	Report Generated	9/16/2010 at 10:52:38 AM
Convergence at slot	0.18° East	Database/Source file	WA_Midland/No._1H_PWB.xml

WELLPATH LOCATION

	Local coordinates		Grid coordinates		Geographic coordinates	
	North[ft]	East[ft]	Easting[USft]	Northing[USft]	Latitude	Longitude
Slot Location	0.00	0.00	602177.02	624437.02	32°42'58.443"N	104°00'04.021"W
Facility Reference Pt			602177.02	624437.02	32°42'58.443"N	104°00'04.021"W
Field Reference Pt			605219.71	623628.40	32°42'50.345"N	103°59'28.437"W

WELLPATH DATUM

Calculation method	Minimum curvature	Rig on No. 1H SHL (KB) to Facility Vertical Datum	18.00ft
Horizontal Reference Pt	Slot	Rig on No. 1H SHL (KB) to Mean Sea Level	3442.00ft
Vertical Reference Pt	Rig on No. 1H SHL (KB)	Facility Vertical Datum to Mud Line (Facility)	0.00ft
MD Reference Pt	Rig on No. 1H SHL (KB)	Section Origin	N 0.00, E 0.00 ft
Field Vertical Reference	Mean Sea Level	Section Azimuth	271.35°

Planned Wellpath Report

Mewbourne Oil Company

Prelim_1
Page 2 of 4



REFERENCE WELLPATH IDENTIFICATION			
Operator	Mewbourne Oil Company	Slot	No. 1H SHL
Area	Eddy County, NM	Well	No. 1H
Field	(Bradley) Sec 29, T18S, R30E	Wellbore	No. 1H PWB
Facility	Bradley 30 Fed Com No. 1H		

WELLPATH DATA (60 stations) † = interpolated/extrapolated station												
MD [ft]	Inclination [°]	Azimuth [°]	TVD [ft]	Vert Sect [ft]	North [ft]	East [ft]	Grid East [srv ft]	Grid North [srv ft]	Latitude	Longitude	DLS [°/100ft]	Comments
0.00†	0.000	271.350	0.00	0.00	0.00	0.00	602177.02	624437.02	32°42'58.443"N	104°00'04.021"W	0.00	
18.00	0.000	271.350	18.00	0.00	0.00	0.00	602177.02	624437.02	32°42'58.443"N	104°00'04.021"W	0.00	Tie On
7620.00	0.000	271.350	7620.00	0.00	0.00	0.00	602177.02	624437.02	32°42'58.443"N	104°00'04.021"W	0.00	EST. KOP
7720.00†	10.000	271.350	7719.49	8.70	0.21	-8.70	602168.32	624437.23	32°42'58.445"N	104°00'04.123"W	10.00	
7820.00†	20.000	271.350	7815.96	34.55	0.81	-34.54	602142.48	624437.83	32°42'58.452"N	104°00'04.425"W	10.00	
7920.00†	30.000	271.350	7906.48	76.76	1.81	-76.74	602100.29	624438.83	32°42'58.463"N	104°00'04.919"W	10.00	
8020.00†	40.000	271.350	7988.29	134.05	3.16	-134.01	602043.02	624440.18	32°42'58.478"N	104°00'05.589"W	10.00	
8120.00†	50.000	271.350	8058.91	204.67	4.82	-204.61	601972.43	624441.84	32°42'58.497"N	104°00'06.415"W	10.00	
8220.00†	60.000	271.350	8116.20	286.48	6.75	-286.40	601890.65	624443.77	32°42'58.518"N	104°00'07.372"W	10.00	
8320.00†	70.000	271.350	8158.40	376.99	8.88	-376.89	601800.16	624445.90	32°42'58.542"N	104°00'08.431"W	10.00	
8420.00†	80.000	271.350	8184.25	473.46	11.15	-473.33	601703.73	624448.17	32°42'58.568"N	104°00'09.560"W	10.00	
8520.00†	90.000	271.350	8192.96	572.96	13.50	-572.80	601604.27	624450.52	32°42'58.594"N	104°00'10.724"W	10.00	
8527.76	90.776	271.350	8192.91	580.72	13.68	-580.55	601596.51	624450.70	32°42'58.596"N	104°00'10.815"W	10.00	END OF CURVE
8620.00†	90.776	271.350	8191.66	672.95	15.85	-672.76	601504.31	624452.87	32°42'58.620"N	104°00'11.894"W	0.00	
8720.00†	90.776	271.350	8190.30	772.94	18.21	-772.73	601404.36	624455.23	32°42'58.647"N	104°00'13.064"W	0.00	
8820.00†	90.776	271.350	8188.95	872.93	20.56	-872.69	601304.40	624457.58	32°42'58.673"N	104°00'14.234"W	0.00	
8920.00†	90.776	271.350	8187.59	972.92	22.92	-972.65	601204.45	624459.94	32°42'58.699"N	104°00'15.404"W	0.00	
9020.00†	90.776	271.350	8186.24	1072.91	25.27	-1072.61	601104.49	624462.29	32°42'58.726"N	104°00'16.574"W	0.00	
9120.00†	90.776	271.350	8184.89	1172.90	27.63	-1172.58	601004.54	624464.65	32°42'58.752"N	104°00'17.743"W	0.00	
9220.00†	90.776	271.350	8183.53	1272.89	29.98	-1272.54	600904.58	624467.00	32°42'58.778"N	104°00'18.913"W	0.00	
9320.00†	90.776	271.350	8182.18	1372.88	32.34	-1372.50	600804.63	624469.36	32°42'58.805"N	104°00'20.083"W	0.00	
9420.00†	90.776	271.350	8180.82	1472.88	34.70	-1472.47	600704.67	624471.71	32°42'58.831"N	104°00'21.253"W	0.00	
9520.00†	90.776	271.350	8179.47	1572.87	37.05	-1572.43	600604.72	624474.07	32°42'58.858"N	104°00'22.423"W	0.00	
9620.00†	90.776	271.350	8178.12	1672.86	39.41	-1672.39	600504.76	624476.42	32°42'58.884"N	104°00'23.593"W	0.00	
9720.00†	90.776	271.350	8176.76	1772.85	41.76	-1772.36	600404.81	624478.78	32°42'58.910"N	104°00'24.763"W	0.00	
9820.00†	90.776	271.350	8175.41	1872.84	44.12	-1872.32	600304.85	624481.13	32°42'58.937"N	104°00'25.932"W	0.00	
9920.00†	90.776	271.350	8174.05	1972.83	46.47	-1972.28	600204.90	624483.49	32°42'58.963"N	104°00'27.102"W	0.00	
10020.00†	90.776	271.350	8172.70	2072.82	48.83	-2072.25	600104.94	624485.84	32°42'58.989"N	104°00'28.272"W	0.00	
10120.00†	90.776	271.350	8171.35	2172.81	51.18	-2172.21	600004.99	624488.20	32°42'59.016"N	104°00'29.442"W	0.00	
10220.00†	90.776	271.350	8169.99	2272.80	53.54	-2272.17	599905.03	624490.56	32°42'59.042"N	104°00'30.612"W	0.00	

Planned Wellpath Report

Mewbourne Oil Company

Prelim_1
Page 3 of 4



REFERENCE WELLPATH IDENTIFICATION			
Operator	Mewbourne Oil Company	Slot	No. 1H SHL
Area	Eddy County, NM	Well	No. 1H
Field	(Bradley) Sec 29, T18S, R30E	Wellbore	No. 1H PWB
Facility	Bradley 30 Fed Com No. 1H		

WELLPATH DATA (60 stations) † = interpolated/extrapolated station

MD [ft]	Inclination [°]	Azimuth [°]	TVD [ft]	Vert Sect [ft]	North [ft]	East [ft]	Grid East [srv ft]	Grid North [srv ft]	Latitude	Longitude	DLS [°/100ft]	Comments
10320.00†	90.776	271.350	8168.64	2372.79	55.89	-2372.13	599805.08	624492.91	32°42'59.068"N	104°00'31.782"W	0.00	
10420.00†	90.776	271.350	8167.28	2472.78	58.25	-2472.10	599705.12	624495.27	32°42'59.095"N	104°00'32.952"W	0.00	
10520.00†	90.776	271.350	8165.93	2572.77	60.60	-2572.06	599605.17	624497.62	32°42'59.121"N	104°00'34.122"W	0.00	
10620.00†	90.776	271.350	8164.58	2672.77	62.96	-2672.02	599505.21	624499.98	32°42'59.147"N	104°00'35.291"W	0.00	
10720.00†	90.776	271.350	8163.22	2772.76	65.32	-2771.99	599405.26	624502.33	32°42'59.174"N	104°00'36.461"W	0.00	
10820.00†	90.776	271.350	8161.87	2872.75	67.67	-2871.95	599305.30	624504.69	32°42'59.200"N	104°00'37.631"W	0.00	
10920.00†	90.776	271.350	8160.51	2972.74	70.03	-2971.91	599205.35	624507.04	32°42'59.226"N	104°00'38.801"W	0.00	
11020.00†	90.776	271.350	8159.16	3072.73	72.38	-3071.88	599105.39	624509.40	32°42'59.253"N	104°00'39.971"W	0.00	
11120.00†	90.776	271.350	8157.81	3172.72	74.74	-3171.84	599005.44	624511.75	32°42'59.279"N	104°00'41.141"W	0.00	
11220.00†	90.776	271.350	8156.45	3272.71	77.09	-3271.80	598905.48	624514.11	32°42'59.305"N	104°00'42.311"W	0.00	
11320.00†	90.776	271.350	8155.10	3372.70	79.45	-3371.77	598805.53	624516.46	32°42'59.332"N	104°00'43.481"W	0.00	
11420.00†	90.776	271.350	8153.74	3472.69	81.80	-3471.73	598705.57	624518.82	32°42'59.358"N	104°00'44.650"W	0.00	
11520.00†	90.776	271.350	8152.39	3572.68	84.16	-3571.69	598605.62	624521.17	32°42'59.384"N	104°00'45.820"W	0.00	
11620.00†	90.776	271.350	8151.04	3672.67	86.51	-3671.65	598505.66	624523.53	32°42'59.410"N	104°00'46.990"W	0.00	
11720.00†	90.776	271.350	8149.68	3772.66	88.87	-3771.62	598405.71	624525.88	32°42'59.437"N	104°00'48.160"W	0.00	
11820.00†	90.776	271.350	8148.33	3872.66	91.23	-3871.58	598305.75	624528.24	32°42'59.463"N	104°00'49.330"W	0.00	
11920.00†	90.776	271.350	8146.97	3972.65	93.58	-3971.54	598205.80	624530.59	32°42'59.489"N	104°00'50.500"W	0.00	
12020.00†	90.776	271.350	8145.62	4072.64	95.94	-4071.51	598105.84	624532.95	32°42'59.516"N	104°00'51.670"W	0.00	
12120.00†	90.776	271.350	8144.27	4172.63	98.29	-4171.47	598005.89	624535.30	32°42'59.542"N	104°00'52.840"W	0.00	
12220.00†	90.776	271.350	8142.91	4272.62	100.65	-4271.43	597905.93	624537.66	32°42'59.568"N	104°00'54.009"W	0.00	
12320.00†	90.776	271.350	8141.56	4372.61	103.00	-4371.40	597805.98	624540.02	32°42'59.594"N	104°00'55.179"W	0.00	
12420.00†	90.776	271.350	8140.20	4472.60	105.36	-4471.36	597706.02	624542.37	32°42'59.621"N	104°00'56.349"W	0.00	
12520.00†	90.776	271.350	8138.85	4572.59	107.71	-4571.32	597606.07	624544.73	32°42'59.647"N	104°00'57.519"W	0.00	
12620.00†	90.776	271.350	8137.50	4672.58	110.07	-4671.29	597506.11	624547.08	32°42'59.673"N	104°00'58.689"W	0.00	
12720.00†	90.776	271.350	8136.14	4772.57	112.42	-4771.25	597406.16	624549.44	32°42'59.699"N	104°00'59.859"W	0.00	
12820.00†	90.776	271.350	8134.79	4872.56	114.78	-4871.21	597306.20	624551.79	32°42'59.726"N	104°01'01.029"W	0.00	
12920.00†	90.776	271.350	8133.43	4972.55	117.13	-4971.18	597206.25	624554.15	32°42'59.752"N	104°01'02.199"W	0.00	
13020.00†	90.776	271.350	8132.08	5072.55	119.49	-5071.14	597106.29	624556.50	32°42'59.778"N	104°01'03.368"W	0.00	
13120.00†	90.776	271.350	8130.73	5172.54	121.85	-5171.10	597006.34	624558.86	32°42'59.804"N	104°01'04.538"W	0.00	
13173.63	90.776	271.350	8130.00 ¹	5226.17	123.11	-5224.72	596952.73	624560.12	32°42'59.819"N	104°01'05.166"W	0.00	No. 1H PBHL

Planned Wellpath Report

 Mewbourne Oil Company

Prelim_1
Page 4 of 4



REFERENCE WELLPATH IDENTIFICATION

Operator	Mewbourne Oil Company	Slot	No. 1H SHL
Area	Eddy County, NM	Well	No. 1H
Field	(Bradley) Sec 29, T18S, R30E	Wellbore	No. 1H PWB
Facility	Bradley 30 Fed Com No. 1H		

TARGETS

Name	MD [ft]	TVD [ft]	North [ft]	East [ft]	Grid East [srv ft]	Grid North [srv ft]	Latitude	Longitude	Shape
1) 30 No. 1H PBHL	13173.63	8130.00	123.11	-5224.72	596952.73	624560.12	32°42'59.819"N	104°01'05.166"W	point

SURVEY PROGRAM Ref Wellbore: No. 1H PWB Ref Wellpath: Prelim_1

Start MD [ft]	End MD [ft]	Positional Uncertainty Model	Log Name/Comment	Wellbore
18.00	13173.63	NaviTrak (Standard)		No. 1H PWB