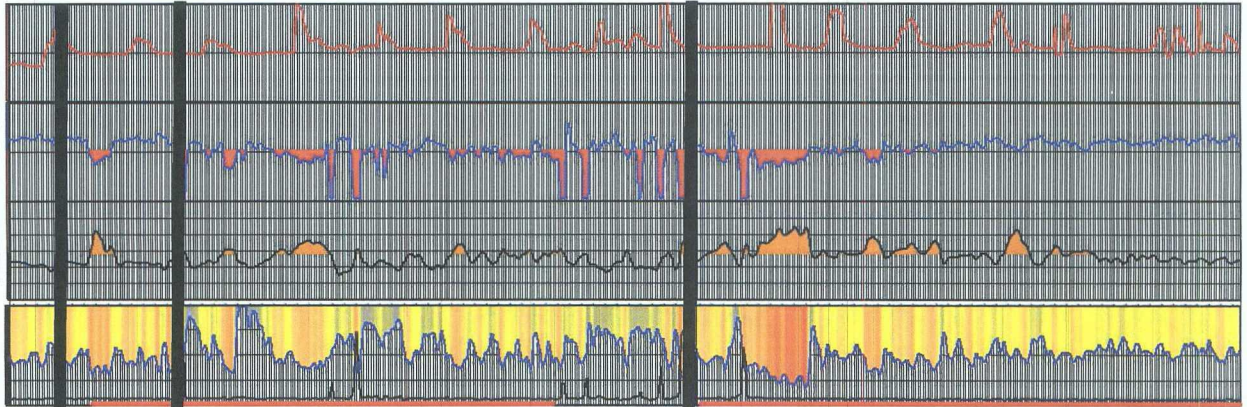


LOG CURVE AND COLOR SCHEME FOR ALL STRATIGRAPHIC CROSS SECTIONS



Top Cliff House

Top Menefee

Top Upper Point

Lookout

TRACK 1 – Shaded Gamma Ray curve (scaled 0 to 180 API units)
Hotter colors = better developed sands (or coals)

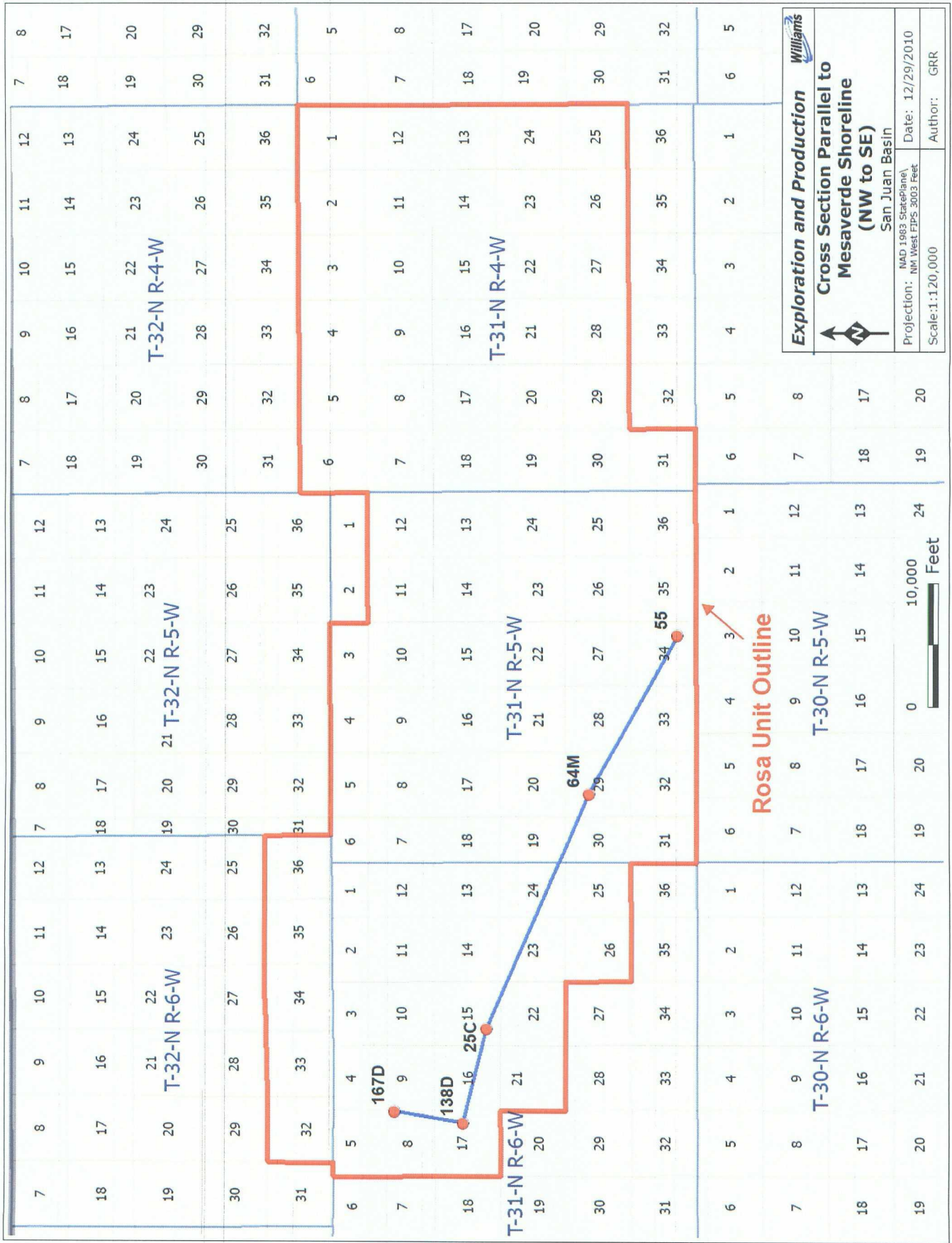
TRACK 1 – Caliper curve (6 to 16”)

TRACK 1 - Perforations

TRACK 2 – Deep resistivity curve (logarithmic scale in ohm-m)
Shaded orange for greater than 18 ohm-m

TRACK 3 – Bulk density curve (scaled 2 to 3 g/cc)
Shaded red for porosity ~ 7%

TRACK 4 – Mud log total gas curve (variable scales)



Map Document: (\\wmstufp01\gis\Project\Employee\Ken_McQueen\Rosa_Unit_NW_to_SE_Cross_Section.mxd) 12/29/2010 -- 1:07:17 PM

HUERFANITO BENTONITE IS USED AS AN EXCELLENT TIME MARKER FOR CORRELATIONS

NW

SE

ROSA UNIT 167D
T31N R6W S8
30045349850000

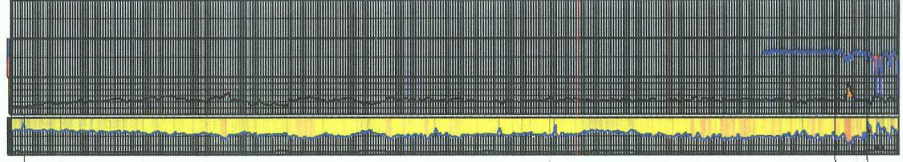
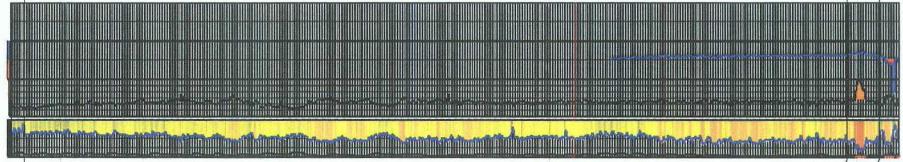
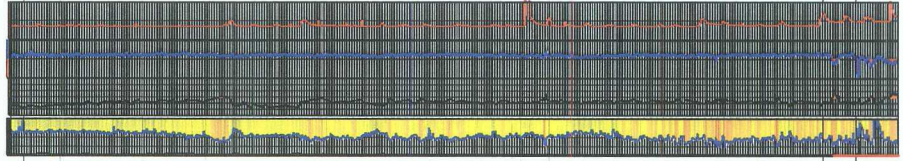
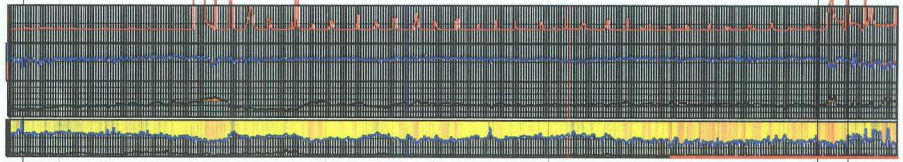
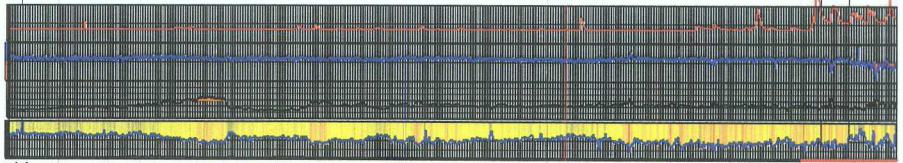
ROSA UNIT 138D
T31N R6W S17
30045349590000

ROSA UNIT 025C
T31N R6W S15
30039304790000

ROSA UNIT 064M
T31N R5W S29
30039255630000

ROSA UNIT 055
T31N R5W S34
30039209230000

HUERFANITO_BENTONITE



HUERFANITO_BENTONITE

CLIFF_HOUSE_SAND
MENEFEES_FORMATION

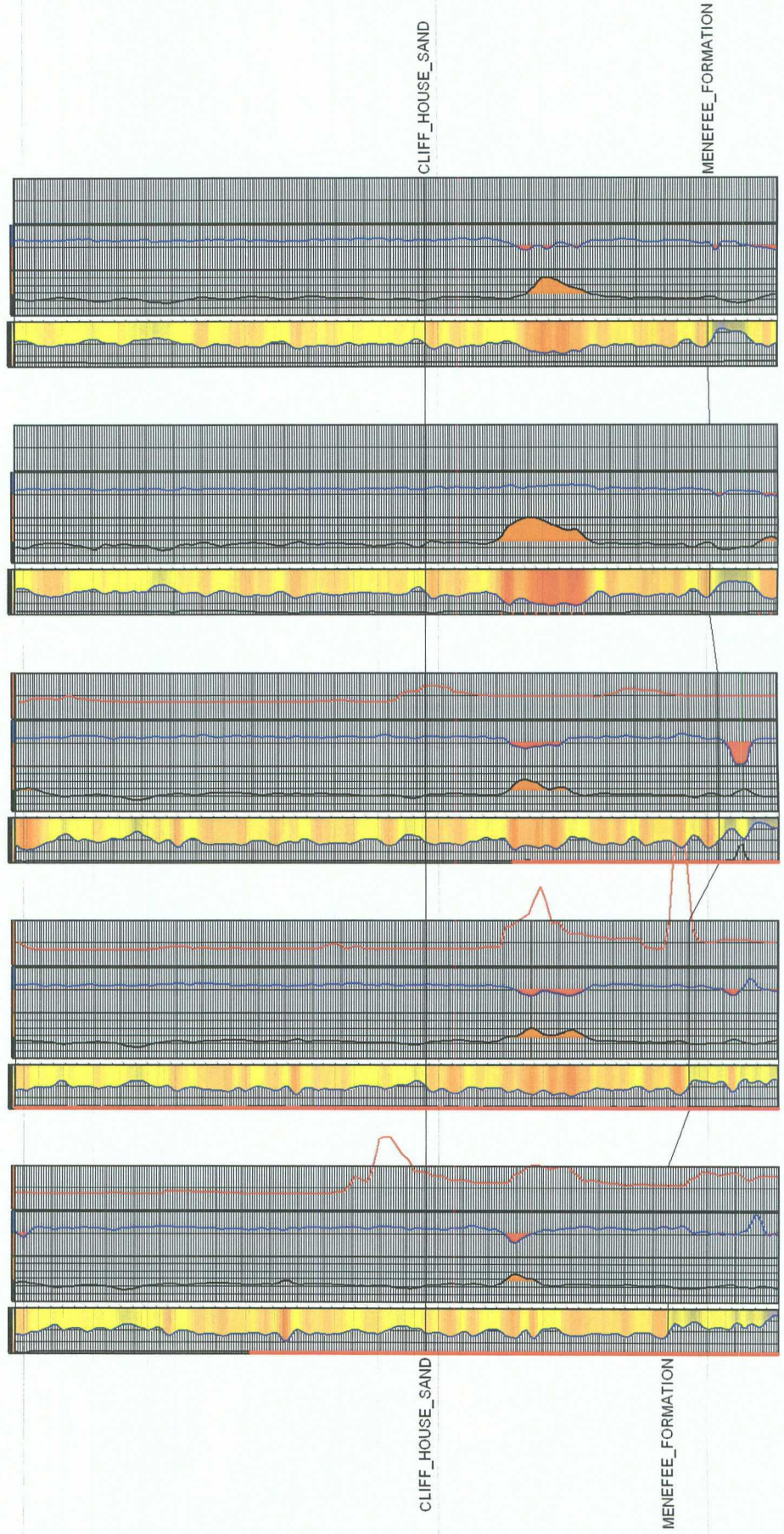
CLIFF_HOUSE_SAND
MENEFEES_FORMATION

NW-SE STRATIGRAPHIC SECTION, CLIFF HOUSE FM., WEST ROSA

NW

SE

	ROSA UNIT 167D T31N R6W S8 30045349850000
	ROSA UNIT 138D T31N R6W S17 30045349590000
	ROSA UNIT 025C T31N R6W S15 30039304790000
	ROSA UNIT 064M T31N R5W S29 30039255630000
	ROSA UNIT 055 T31N R5W S34 30039209230000



NW-SE STRATIGRAPHIC SECTION, MENEFEЕ FM., WEST ROSA

NW

Rosa 167D

8-31N-6W

Rosa 138D

17-31N-6W

Rosa 25C

15-31N-6W

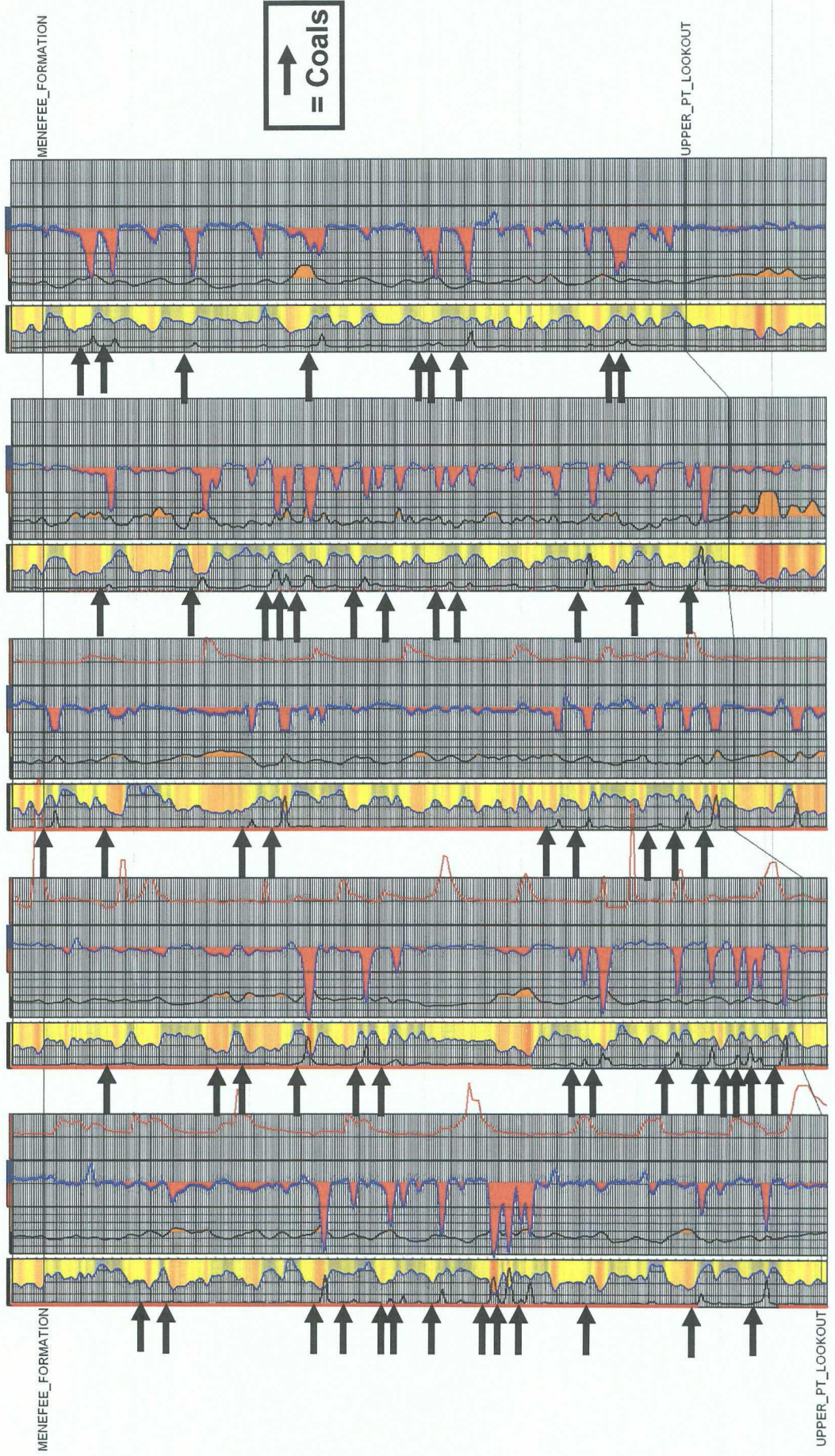
Rosa 64M

29-31N-5W

Rosa 55

34-31N-5W

SE

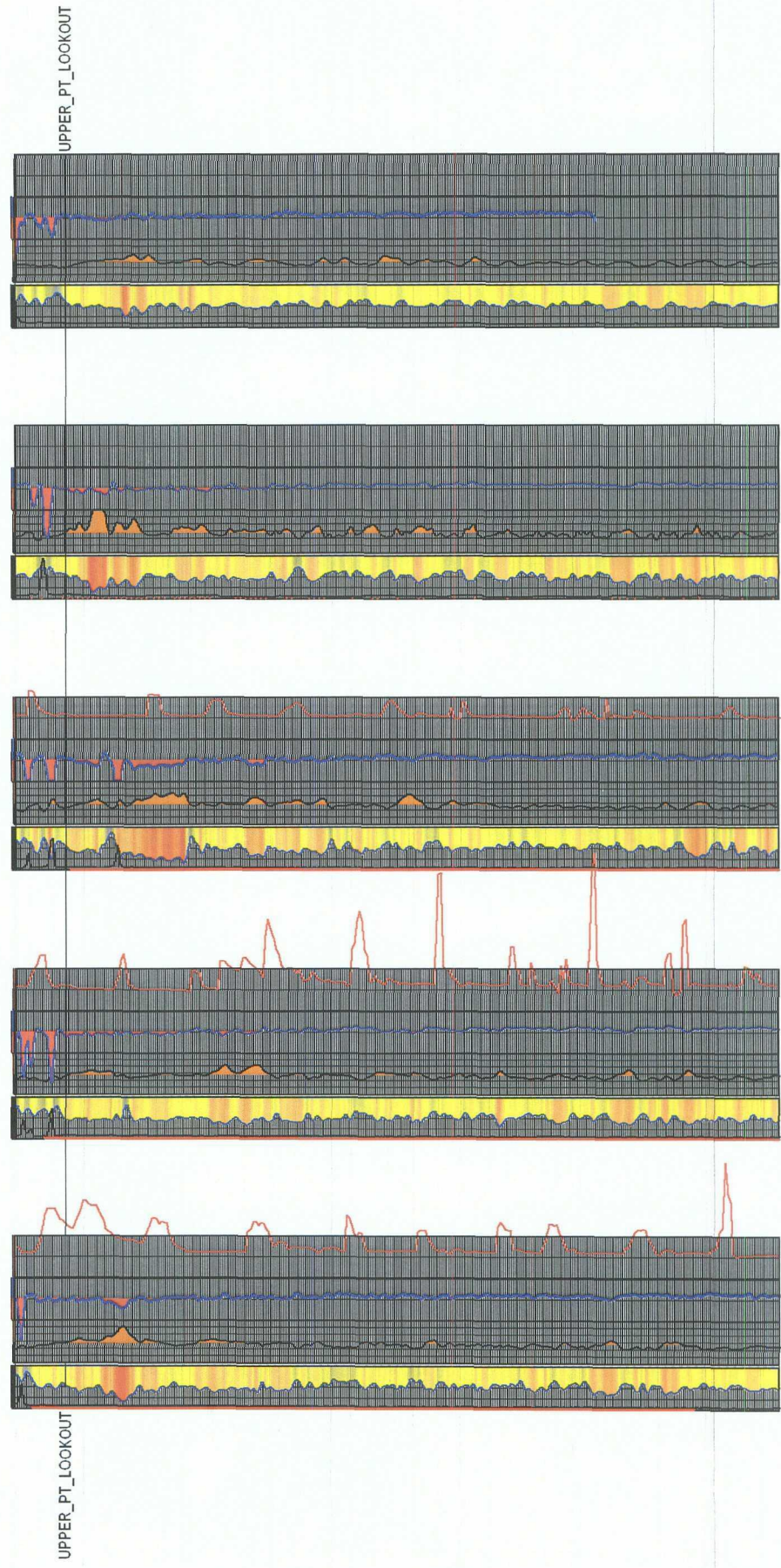


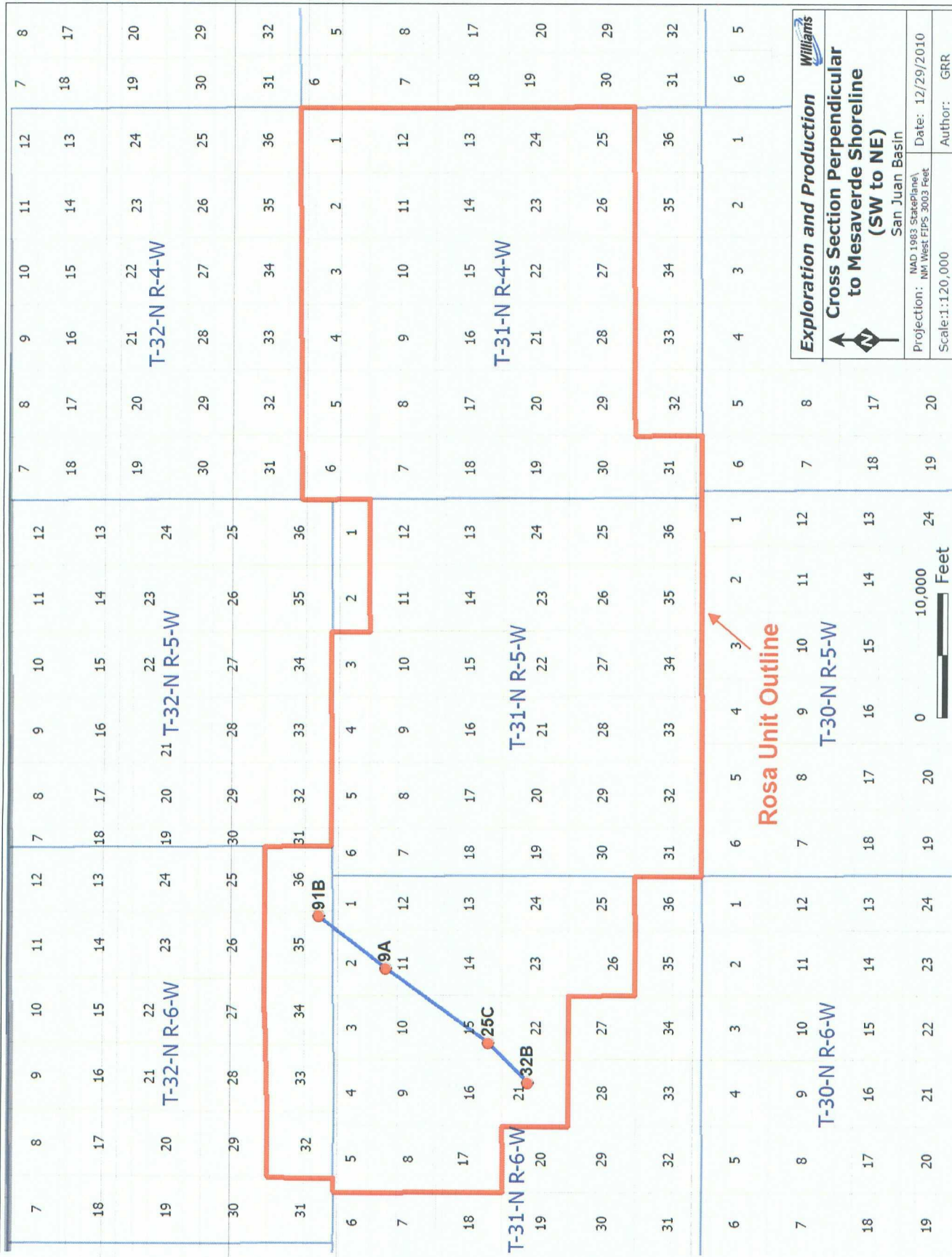
NW-SE STRATIGRAPHIC SECTION, UPPER POINT LOOKOUT FM., WEST ROSA

NW

SE

- ☀ ROSA UNIT 167D
T31N R6W S8
30045349850000
- ☀ ROSA UNIT 138D
T31N R6W S17
30045349590000
- ☀ ROSA UNIT 025C
T31N R6W S15
30039304790000
- ☀ ROSA UNIT 064M
T31N R5W S29
30039255630000
- ☀ ROSA UNIT 055
T31N R5W S34
30039209230000





NE-SW STRATIGRAPHIC SECTION, MESAVERDE FORMATIONS, WEST ROSA

SW

NE



ROSA UNIT 032B
T31N R6W S21
30039267710000



ROSA UNIT 025C
T31N R6W S15
30039304790000



ROSA UNIT 009A
T31N R6W S11
30039255840000



ROSA UNIT 091B
T32N R6W S35
30039266840000

