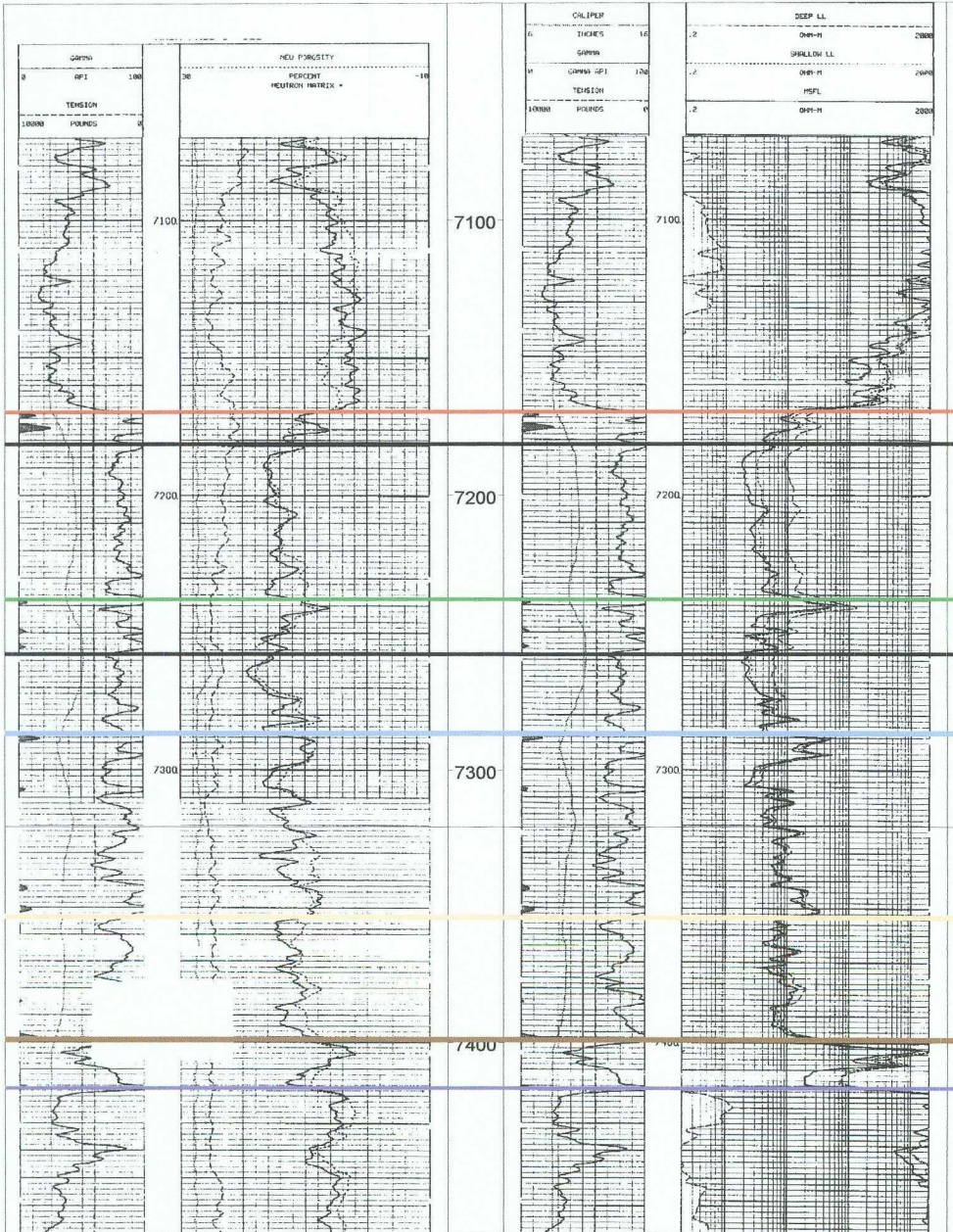


300152813900

MEWBOURNE OIL COMPANY  
SANTO NINO 29 FEDERAL 1  
SW NW  
TWP: 18 S - Range: 30 E - Sec. 29

TYPE LOG



1ST BONE SPRING SAND

2ND BONE SPRING CARBONATE

TD=8406

Oil Conservation Division  
Case No. \_\_\_\_\_  
Exhibit No. 5