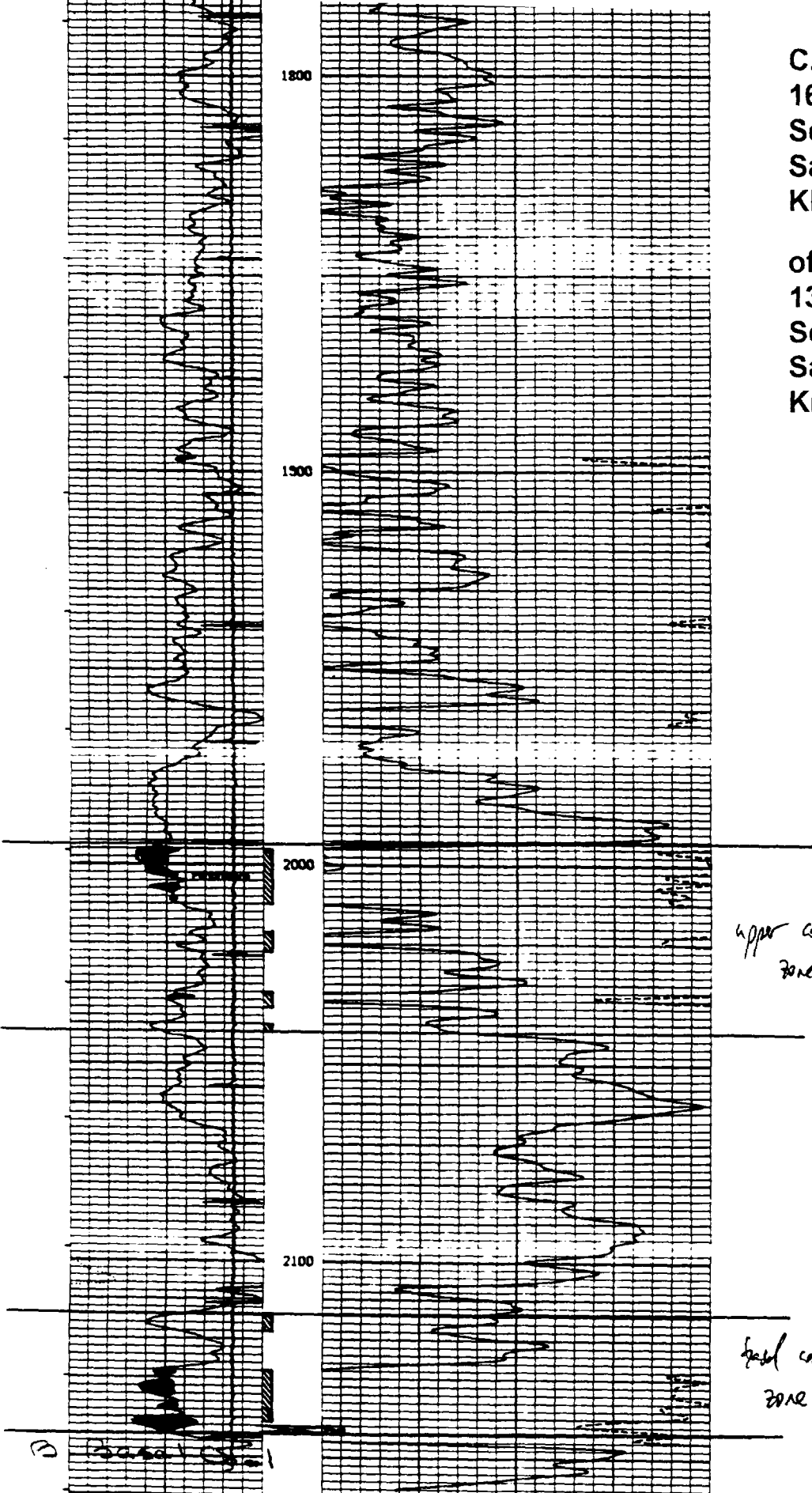


C. M. Morris #1
1650 FNL 1650 FEL
Sec. 10, T27N, R10W
San Juan Co., NM
KB 6250 ft

offset to C. M. Morris #100
1340 FNL 1405 FEL
Sec. 10, T27N, R10W
San Juan Co., NM
KB 6252 ft (est.)

Fruited Formation



START: 2158 FT	DATE: 08/20/90 TIME: 07:25
N. POROSITY (SAND.)	
GAMMA RAY	
APC UNITS	
COLLAR LOCATOR	N. POROSITY (SAND)

C. M. Morris COM #1E
1190 FNL 1580 FEL
Sec. 10, T27N, R10W
San Juan Co., NM
KB 6239 ft

offset to C. M. Morris #100
1340 FNL 1405 FEL
Sec. 10, T27N, R10W
San Juan Co., NM
KB 6252 ft (est.)

