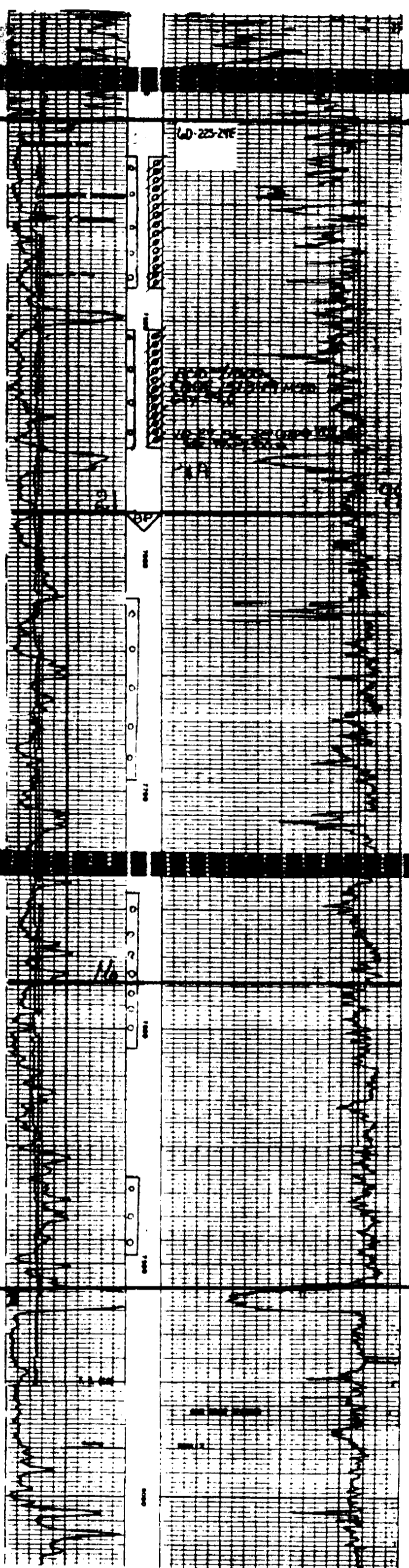


PRESENT GAS/WATER CONTACT -3450SS



TOP UPPER PENN.(CISCO FORMATION)

-3468SS



**BRANNIGAN ANF FED # 1
RE-ENTRY**

**YATES PETROLEUM CORP
SEC 2. T22S R24E
EDDY COUNTY , NEW MEXICO
TD 7981**

**PERFED 7863-7896, 7743-7808
AND 7617-7695**

ABOVE PERFS TESTED WET

**PERFED OLD INTERVAL 7430-7486
AND 7504-7554**

**IPP(SUB) 1740MCFPD 10BOPD
4633BWPD 3/4 CHK**

ORIGINAL GAS/WATER CONTACT -3778SS



BASE UPPER PENN.(CISCO)



ORYX ENERGY COMPANY



**JOHN TRIGG FEDERAL IB 6-1
SEC.2 T22S R24E
EDDY COUNTY, NEW MEXICO
TD 9476
PERFS 7430-7486 7504-7554
ACDZ W/1000 GAL
IPF 15.13 MMCFPD 39BOPD
CUM 28.3BCF 193,546BC**