



GARY JOHNSON
GOVERNOR

STATE OF NEW MEXICO

ENERGY, MINERALS AND NATURAL RESOURCES DEPARTMENT

OIL CONSERVATION DIVISION
ARTESIA DISTRICT OFFICE

JENNIFER SALIS
CABINET SECRETARY

January 26, 1995

Rand Carroll
Oil Conservation Division
2040 South Pacheco Street
Santa Fe, NM 87505

Re: Charles W. Harle, Christopher #1 Ut B-32-6S-26E Bond # AE 71344-11 / 85100
" Zimmerman #2 Ut F-35-10S-25E - Bond # 9SE-064-533 / 85
" Zimmerman #3 Ut C-35-10S-25E - Bond # 9SE-064-534

Dear Rand,

We recommend plugging the above captioned wells to protect fresh waters of the state of New Mexico.

We do not see any major problems in plugging these wells but it looks as though we will need to play these by ear because the records are incomplete.

According to our records we still have plugging bonds in place.

If we may be of service to you please let me know.

Yours Truly,

Ray Smith
Deputy Oil & Gas Inspector

RS:br

BEFORE EXAMINER STOGNER	
OIL CONSERVATION DIVISION	
	EXHIBIT NO. <u>1</u>
	CASE NO. <u>11253</u>

Charles W. Harle
Christopher #1
Ut B-32-6S-26E

Well was drilled to 450' and the hole went crooked at 330'. Set 8 5/8" casing at 330' and cemented with 200 Sx of cement but did not circulate cement to the surface. Pumped 225 Sx of cement down backside and I believe this would have been done by pumping down through 1 inch pipe. Circulated cement to surface but did not shut off surface water. 200 ft. of cement was left inside of 8 5/8" casing.

Charles W. Harle
Zimmerman #2
Ut F-35-10S-25E

5 1/2" casing at 1295'
Top perf at 1197'

Spot 25 Sx at 1197' and tag
RIH to 500' and fill to surface with cement.

Charles W. Harle
Zimmerman #3
Ut C-35-10S-25E

8 5/8 set at 320'
I find no record of cementing.

We may possibly can pull this 8 5/8" and ready mix, or we may need to pack off on surface and circulate cement.

WELL PLUGGING COMPANIES

LB Oilfield Services Inc.
P.O. Box 122
Midland, TX 79701
Ph: 915-520-4103

Pride Petroleum Service
P.O. Box 909
Lovington, NM 88260
Ph: 505-396-2851

Royalty Well Service
P.O. Box 394
Grandfalls, TX 79742
Ph: 915-547-2926

Mayo Marrs Casing Pullers
P.O. Box 863
Kermit, TX 79745
Ph: 915-586-3076

D A & S Oilfield Services
P.O. Box 2545
Hobbs, NM 88240
Ph: 505-392-6591



BRUCE KING
GOVERNOR

STATE OF NEW MEXICO

ENERGY, MINERALS AND NATURAL RESOURCES DEPARTMENT

OIL CONSERVATION DIVISION
ARTESIA DISTRICT OFFICE

ANITA LOCKWOOD
CABINET SECRETARY

December 15, 1994

Charles W. Harle
P.O. Box 1101
Sonora, TX 76950

Re: Zimmerman #3 Ut. C-35-10S-25E, Chaves County, New Mex.

Dear Mr. Harle:

According to our records your Zimmerman #3 well was spudded 9/1/80 with a water string set at 320 feet on 9/15/80. We have nothing to document cementing of this string.

On 9/30/80 the rig was moved to Sonora for overhaul and to this date our records show nothing else has been done.

We ask that you submit plans, in accordance with rule 202, to plug and abandon this well by February 1, 1995.

Your Truly,

Ray Smith
Oil & Gas Inspector

RS:br

App. 1-10-80 1650/N 1980/W 35-10S-25E 9SE 064-533
Am.Mfg.Mutual Ins.Co., Surety 5,000'

App. 1-28-80 *Rider changing description of the well: ✓
1980/S 660/E 9-11-25 Bond No. 9SE-064-531

App. 8-1-80 ? Bond No. OSE 585-657 2145/W 660/N sec. 35,
T-10S, R-25E 1220' Chaves Co.

App. 12-1-80 * Bond No. 9SE-064-531 REINSTATEMENT ✓

Charles W. Harle
P. O. Box 1101

Sonora, Texas 76950

\$5,000 One-Well Plugging

American Employers' Insurance
Company, Surety

Approved: 10-25-79 AE-71344-11 330/N 2310/E Sec. 32,
T-6-S, R-26-E, Chaves Co.
Depth: 5,000'

Approved: 12-19-79: *#9SE-064-531 NE/SE/4 9-11S-25E

see back 5000' Chaves Co.

side of card American Manufacturers' Mutual

Reinstated
Cancelled: 12-1-80 Ins., Surety

App. 1-10-80 660/N 1980/W 35-10-25 9SE-064-534
Am.Mfg.Mutual Ins.Co., Surety, 5,000'

(over)



STATE OF NEW MEXICO
ENERGY AND MINERALS DEPARTMENT
OIL CONSERVATION DIVISION

BRUCE KING
GOVERNOR

December 13, 1982

POST OFFICE BOX 2082
STATE LAND OFFICE BUILDING
SANTA FE, NEW MEXICO 87
(505) 827-2434

RECEIVED

DEC 20 1982

O. C. D.
ARTESIA, OFFICE

American Manufacturers Mutual
Insurance Co.
Chicago, Illinois

Re: \$5,000 One-Well Plugging Bond
Charles W. Harle, Principal
American Manufacturers Mutual
Insurance Co., Surety
1650' FNL and 1980' FWL of
Sec. 35, T-10-S, R-25-E,
Chaves County, Depth: 5,000 ft.
Bond No. 9SE 064 533

Gentlemen:

The Oil Conservation Division hereby approves
release of the above-referenced plugging bond
effective this date.

Sincerely,

JOE D. RAMEY,
Director

JDR/DV/dr

cc: Oil Conservation Division
Artesia, New Mexico

Charles W. Harle
Sonora, Texas

Zimmerman 4/2



STATE OF NEW MEXICO
ENERGY AND MINERALS DEPARTMENT
OIL CONSERVATION DIVISION

BRUCE KING
GOVERNOR

December 13, 1982

POST OFFICE BOX 2088
STATE LAND OFFICE BUILD
SANTA FE, NEW MEXICO 87
(505) 827-2434

RECEIVED

DEC 20 1982

O. C. D.
ARTESIA, OFFICE

American Manufacturers Mutual
Insurance Co.
Chicago, Illinois

Re: \$5,000 One-Well Plugging Bond
Charles W. Harle, Principal
American Manufacturers Mutual
Insurance Co., Surety
660' FNL and 1980' FWL of
Sec. 35, T-10-S, R-25-E,
Chaves County, Depth: 5,000 ft.
Bond No. 9SE-064-543

Gentlemen:

The Oil Conservation Division hereby approves
release of the above-referenced plugging bond
effective this date.

Sincerely,

JOE D. RAMEY,
Director

JDR/DV/dr

cc: Oil Conservation Division
Artesia, New Mexico

Mr. Charles W. Harle

Sumnerman #1



BRUCE KING
GOVERNOR

STATE OF NEW MEXICO
ENERGY AND MINERALS DEPARTMENT
OIL CONSERVATION DIVISION

December 13, 1982

POST OFFICE BOX 208
STATE LAND OFFICE BUILDING
SANTA FE, NEW MEXICO 87501
(505) 827-2434

RECEIVED

DEC 20 1982

O. C. D.
ARTESIA, OFFICE

Kemper Group Insurance
10950 Grandview
Overland Park, Kansas 66210

Attention: Mr. Dave Britton

Re: \$5,000 One-Well Plugging Bond
Charles W. Harle, Principal
American Manufacturers Mutual
Insurance, Surety
1980' FSL and 660' FEL of
Sec. 9, T-11-S, R-25-E,
Chaves County, Depth: 5,000 ft
Bond No. 9SE-064-531

Gentlemen:

The Oil Conservation Division hereby approves
release of the above-referenced plugging bond
effective this date.

Sincerely,

JOE D. RAMEY,
Director

JDR/DV/dr

cc: Oil Conservation Division
Artesia, New Mexico

Mr. Charles W. Harle
500 W. Crockett, Box 1101
Sonora, Texas 76950

OIL CONSERVATION RECEIVED

P O BOX 2088

SANTA FE, NEW MEXICO
DEC 3 1980

Form C-103
Revised 12-1-79

NO. OF COPIES RECEIVED	
DISTRIBUTION	
SANTA FE	1
FILE	1
U.S.G.S.	
LAND OFFICE	
OPERATOR	1

O. C. D.
ARTESIA OFFICE

3a. Indicate Type of Lease
State ☐ Fee ☒
3. State Oil & Gas Lease No.

SUNDRY NOTICES AND REPORTS ON WELLS

DO NOT USE THIS FORM FOR PROPOSALS TO DRILL OR TO REFINISH OR PLUG A WELL TO A DIFFERENT RESERVOIR.
USE APPLICATION FOR PERMIT TO DRILL FORM C-101 FOR SUCH PROPOSALS.

OIL WELL ☒ GAS WELL ☐ OTHER ☐
Name of Operator
Charles W. Harle
Address of Operator
Box 1101 Sonora, TX 76950
Location of well
UNIT LETTER C 2310 FEET FROM THE NW LINE AND 2145 FEET FROM THE HW LINE, SECTION 35 TOWNSHIP 10-S RANGE 25-E NMPM.

7. Unit Agreement Name
8. Name of Lease Name
Zimmerman
9. Well No.
3
10. Field and Pool or Other
SAN ANDRES
South Bitter Lake
11. Elevation (Show whether DF, RT, GK, etc.)
12. County
Chaves

Check Appropriate Box To Indicate Nature of Notice, Report or Other Data
NOTICE OF INTENTION TO: SUBSEQUENT REPORT OF:

PERFORM REMEDIAL WORK <input type="checkbox"/>	PLUG AND ABANDON <input type="checkbox"/>	REMEDIAL WORK <input type="checkbox"/>	ALTERING CASING <input type="checkbox"/>
TEMPORARILY ABANDON <input checked="" type="checkbox"/>	CHANGE PLANS <input type="checkbox"/>	COMMENCE DRILLING OPNS. <input type="checkbox"/>	PLUG AND ABANDONMENT <input type="checkbox"/>
PULL OR ALTER CASING <input type="checkbox"/>	OTHER <input type="checkbox"/>	CASING TEST AND CEMENT JOBS <input type="checkbox"/>	

Describe Proposed or Completed Operations (Clearly state all pertinent details, and give pertinent dates, including estimated date of starting any proposed work) SEE RULE 1103.

Spud Date 9-1-80
Raw Water String Set @ 320' 9-15-80
Rigged Down For Major Rig Repairs 9-18-80
Moved Rig To Sonora TX For Major Overhaul 9-30-80
Had To Temporarily Abandon Loc. 9-30-80
Tacked Plate on Top of 8 5/8 Water String.
Will Pull Water String When Set Surface Pip
GS Drilling Resumes.
Hope this is info. needed!

I hereby certify that the information above is true and complete to the best of my knowledge and belief.

W. A. Gessett TITLE Agent DATE 11-28-80

W. A. Gessett TITLE SUPERVISOR, DISTRICT II DATE FEB 25 1981

CONDITIONS OF APPROVAL, IF ANY:

Memo

From

M.C. STUBBLEFIELD
DEPUTY OIL & GAS INSPECTOR

To 12/2/80

N-35-10-25 Charles H Harle
Zimmerman #3

7" casing in hole. With swedge
in top collar.

There was no Cabletool
or drilling rig on loc.

OIL CONSERVATION DIVISION-ARTESIA



STATE OF NEW MEXICO
ENERGY AND MINERALS DEPARTMENT
OIL CONSERVATION DIVISION
ARTESIA DISTRICT OFFICE

BRUCE KING
GOVERNOR

LARRY KEHOE
SECRETARY

November 26, 1980

P.O. DRAWER DD
ARTESIA, NEW MEXICO 88
(505) 746-4881

748-1283

Mr. Charles W. Harle
Post Office Box 1101
Sonora, Texas 76950

Re: Zimmerman
#3-C-35-10-25
Chaves County, NM

Dear Mr. Harle:

It has come to our attention that drilling operations had commenced on the subject well prior to the letter of cancellation. Therefore, our letter of November 13, 1980, cancelling Form C-101, Notice of Intention To Drill the well, is hereby rescinded, and the permit remains in full force and effect.

Please submit Form C-103, reporting the spud date and any other pertinent information immediately.

Failure to comply will result in this matter being referred to our attorney for legal action.

Sincerely,

A handwritten signature in cursive script, reading "W. A. Gressett".

W. A. Gressett
Supervisor, District II

WAG:ar

Xc: Mr. Ernest L. Padilla
Post Office Box 2088
Santa Fe, New Mexico 87501



BRUCE KING
GOVERNOR
LARRY KEHOE
SECRETARY

STATE OF NEW MEXICO
ENERGY AND MINERALS DEPARTMENT
OIL CONSERVATION DIVISION
ARTESIA DISTRICT OFFICE

November 13, 1980

P.O. DRAWER 00
ARTESIA, NEW MEXICO 8
(505) 748-4864
748-1283

Charles W. Harle
P. O. Box 1101
Sonora, TX 76950

Re: Zimmerman
3-C-35-10S-25E
Chaves County, NM

Gentlemen:

Ninety days have elapsed since approval of Commission Form C-101, Application For Permit To Drill, for the subject well and to date no progress reports, Forms C-103, have been received.

Therefore, Commission approval of Form C-101 has now expired and no drilling operations are to be initiated or continued without further notice to and approval by the Commission. Pending such approval, this will be considered an abandoned location.

Sincerely,

A handwritten signature in cursive script, reading "W. A. Gressett".

W. A. Gressett
Supervisor, District II

WAG:br
Xc: Santa Fe OCD

Memo

From

M.C. STUBBLEFIELD
DEPUTY OIL & GAS INSPECTOR

To 11/13/81

C-35-10-25

Charles W. Hark Zimmerman #3

Inspected abandon drilling loc.

Found 8 $\frac{5}{8}$ " casing with cap
which is also open on backside
of casing. There is a drilling pit
on location.

OIL CONSERVATION DIVISION-ARTESIA

Signature _____

Other 7 1/2

D - Drilling
P - Production
I - Injection
C - Combined
S - SWD
U - Underground
G - General
F - Facility

NO. OF COPIES RECEIVED	
DISTRIBUTION	
ANTA FE	1
FILE	1
U.S.G.S.	2
LAND OFFICE	
OPERATOR	

NEW MEXICO OIL CONSERVATION COMMISSION

JUL 14 1980

O. C. D.
ARTESIA, OFFICE

30-005-607
Form C-101
Revised 1-1-65

5A. Indicate Type of Lease	STATE <input type="checkbox"/>	FEE <input type="checkbox"/>
5. State Oil & Gas Lease No.		

APPLICATION FOR PERMIT TO DRILL, DEEPEN, OR PLUG BACK

1a. Type of Work DRILL <input checked="" type="checkbox"/> DEEPEN <input type="checkbox"/> PLUG BACK <input type="checkbox"/>		7. Unit Agreement Name
b. Type of Well OIL WELL <input checked="" type="checkbox"/> GAS WELL <input type="checkbox"/> OTHER <input type="checkbox"/>		8. Farm or Lease Name ZIMMERMAN
2. Name of Operator CHARLES W. HARLE		9. Well No. #3
3. Address of Operator P.O. BOX 1101 SONORA, TEXAS 76950		10. Land and Wildcat SAN ANDRES S. BITTERLAKE
4. Location of Well UNIT LETTER C LOCATED 2145 FEET FROM THE WEST LINE AND 660 FEET FROM THE NORTH LINE OF SEC. 35 TWP. 10-S RSE. 25-E NMPM		12. County CHAVES
19. Proposed Depth 1220'		19A. Formation SAN ANDRES
20. Rotary or C. C.T.		
21. Elevations (Show whether DF, RT, etc.) 3712.00 G.I.	21A. Kind & Status Plug. Bond SINGLE WELL	21B. Drilling Contractor DEVILS RIVER DRILLING
22. Approx. Date Work will WHEN APPROV.		

PROPOSED CASING AND CEMENT PROGRAM

SIZE OF HOLE	SIZE OF CASING	WEIGHT PER FOOT	SETTING DEPTH	SACKS OF CEMENT	EST. T.
10 "	7 "	23 lb.	700'	300	SURFACE
6 "	4 1/2 "	9.5 lb.	1220'	175	

THIS WELL IS AN OFFSET TO THE OLD ZIMMERMAN #1. THE ZIMMERMAN #1 WAS PLUG AFTER HOLE WAS LOST DUE TO COLLAPSED CASING. WE PLAN TO DRILL NEW WELL TO A DEPTH OF APPROXIMATELY 1220'. WE WILL TREAT WELL AS NEEDED.

APPROVAL VALID
FOR 90 DAYS UNLESS
DRILLING COMMENCED,
EXPIRES 11-11-80

IN ABOVE SPACE DESCRIBE PROPOSED PROGRAM; IF PROPOSAL IS TO DEEPEN OR PLUG BACK, GIVE DATA ON PRESENT PRODUCTIVE ZONE AND PROPOSED PRODUCTIVE ZONE. GIVE FLOUT PREVENTER PROGRAM, IF ANY.

I hereby certify that the information above is true and complete to the best of my knowledge and belief.

Signed [Signature] Title AGENT Date JULY 1, 1980

(This space for State Use)

APPROVED BY [Signature] TITLE SUPERVISOR, DISTRICT II DATE AUG 11 1980

CONDITIONS OF APPROVAL, IF ANY:

Notify N.M.O.C.C. in sufficient time to witness cement surface behind 7" casing

NEW MEXICO OIL CONSERVATION COMMISSION
WELL LOCATION AND ACREAGE DEDICATION PLAT

JUL 14 1980

Form 1-1-72
Superseded by
Effective 1-1-72

O. C. D.

All distances must be from the outer boundaries of the Section

ARTESIA, OFFICE

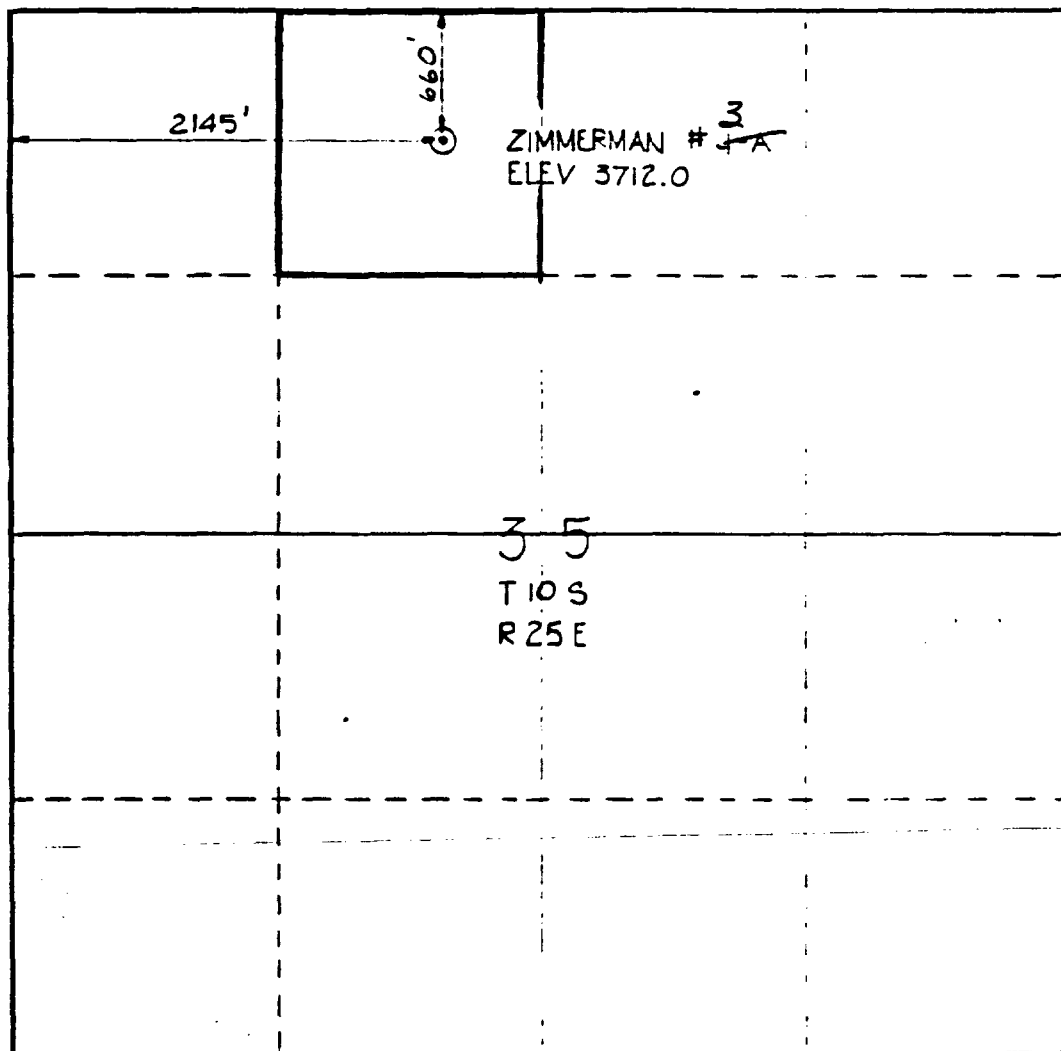
Operator CHARLES W. HARLE		Company Zimmerman Reef Production Company		Well No. 3
Unit Letter C	Section 35	Township 10 South	Range 25 East	County Chaves County
Actual Footage Location of Well:				
2145.0 feet from the west		660.0 feet from the north		Line
Ground Level Elev. 3712.00	Producing Formation SAN ANDRES	Dedicated Acreage 40		A

- Outline the acreage dedicated to the subject well by colored pencil or hatchure marks on the plat below.
- If more than one lease is dedicated to the well, outline each and identify the ownership thereof (both as to work interest and royalty).
- If more than one lease of different ownership is dedicated to the well, have the interests of all owners been consolidated by communitization, unitization, force-pooling, etc?

☐ Yes ☐ No If answer is "yes," type of consolidation _____

If answer is "no," list the owners and tract descriptions which have actually been consolidated. (Use reverse side this form if necessary.) _____

No allowable will be assigned to the well until all interests have been consolidated (by communitization, unitization, forced-pooling, or otherwise) or until a non-standard unit, eliminating such interests, has been approved by the Commission.



CERTIFICATION

I hereby certify that the information obtained herein is true and complete to the best of my knowledge and belief.

Charles W. Harle

CHARLES W. HARLE

President

Reef Production Company

July 8, 1980

I hereby certify that the well location shown on this plat was plotted from the notes of actual survey conducted under my supervision and that the same is true and correct to the best of my knowledge and belief.

RAYMOND LEE DENNIS

July 8, 1980

Raymond Lee Dennis



4115